

04 - 0233

*Your quick,
easy guide to*

Minnesota Workforce Facts

Labor Market Information HelpLine:

651.282.2714 • 1.888.234.1114

Or visit our website at:

www.mnwfc.org/lmi

MINNESOTA DEPARTMENT OF EMPLOYMENT
AND ECONOMIC DEVELOPMENT

March 2004

Minnesota Workforce Facts

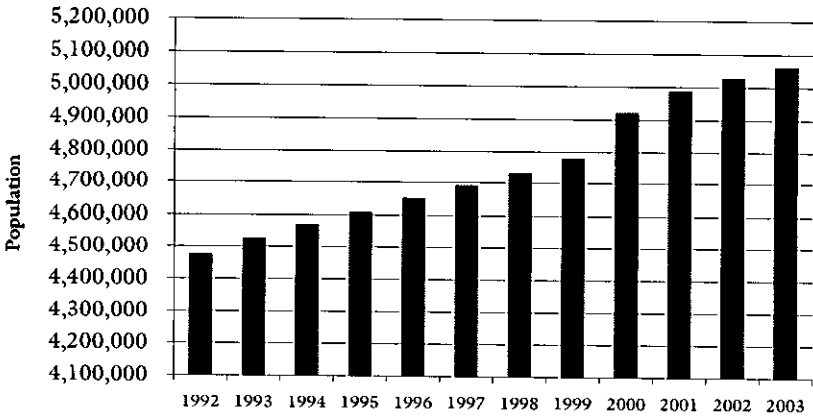
Table of Contents

Population Estimates, Minnesota	1
Number of Employed and Unemployed, Minnesota and United States	2
Average Unemployment Rates, Minnesota and United States	3
Workforce Participation Rates, Minnesota	4
Workforce Participation Rates, United States	5
Annual Average Employment by Industry, Minnesota	6
Nonagricultural Employment, Minnesota and United States	7
Employment Projections by Industry, Minnesota and United States	8
Employment Projections by Occupation, Minnesota and United States	9
10 Fastest-Growing Occupations and Hourly Wages, Minnesota and U.S.	10
Initial Claims for Unemployment Insurance, Minnesota and United States	11
Average Weeks Claimed, Insured Unemployed, Minnesota and U.S.	12
Maximum Weekly Benefit Amount, Minnesota	13
Per Capita Personal Income, Minnesota and United States	14
Current Poverty Guidelines and Lower Living Standard Income Levels	15
Poverty Rates, Minnesota and United States	16
Consumer Price Index for All Urban Consumers	17
Reference:	
Useful Websites	18
Definitions of Labor Market Terms	19

Labor Market Information HelpLine: 651.282.2714 or 1.888.234.1114 (Toll Free)

Population Estimates

Minnesota, 1992-2003



Year	Population
1992	4,471,503
1993	4,521,709
1994	4,566,028
1995	4,605,445
1996	4,647,723
1997	4,687,726
1998	4,726,411
1999	4,775,508
2000	4,919,479
2001	4,985,202
2002	5,024,791
2003	5,059,375

Source: U.S. Census Bureau

Labor Market Information HelpLine: 651.282.2714 or 1.888.234.1114 (Toll Free)

Number of Employed and Number of Unemployed

Minnesota and United States, 1993-2003

MINNESOTA	Workforce	Employed	Unemployed
1993	2,498,664	2,370,302	128,362
1994	2,600,765	2,496,699	104,066
1995	2,627,330	2,530,047	97,283
1996	2,644,082	2,538,625	105,457
1997	2,670,885	2,583,837	87,048
1998	2,734,896	2,665,254	69,642
1999	2,762,139	2,684,914	77,225
2000	2,793,852	2,702,922	90,930
2001	2,885,921	2,779,881	106,040
2002	2,915,014	2,786,921	128,093
2003	2,923,083	2,777,684	145,399

UNITED STATES	Workforce (in thousands)	Employed (in thousands)	Unemployed (in thousands)
1993	129,200	120,259	8,940
1994	131,056	123,060	7,996
1995	132,304	124,900	7,404
1996	133,943	126,708	7,236
1997	136,297	129,558	6,739
1998	137,673	131,463	6,210
1999	139,368	133,488	5,880
2000	142,583	136,891	5,692
2001	143,734	136,933	6,801
2002	144,863	136,485	8,378
2003	146,510	137,736	8,774

Source: Local Area Unemployment Statistics, Minnesota Department of Employment and Economic Development, Bureau of Labor Statistics, U.S. Department of Labor

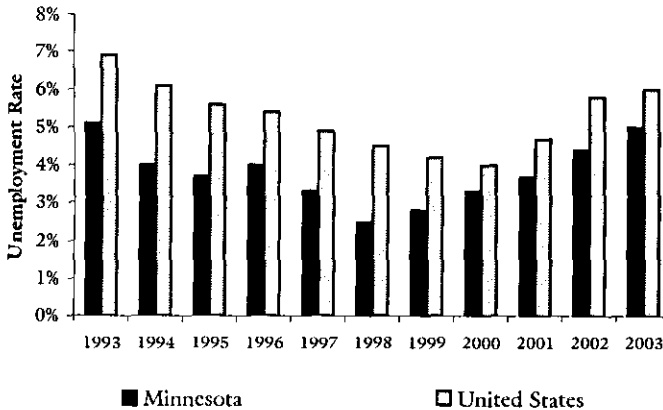
Labor Market Information HelpLine: 651.282.2714 or 1.888.234.1114 (Toll Free)

Average Unemployment Rate

Minnesota and United States, 1993-2003

	Minnesota	United States
1993	5.1 %	6.9 %
1994	4.0	6.1
1995	3.7	5.6
1996	4.0	5.4
1997	3.3	4.9
1998	2.5	4.5
1999	2.8	4.2
2000	3.3	4.0
2001	3.7	4.7
2002	4.4	5.8
2003	5.0	6.0

Source: Local Area Unemployment Statistics (LAUS), Minnesota Department of Employment and Economic Development, Bureau of Labor Statistics, U.S. Department of Labor



Labor Market Information HelpLine: 651.282.2714 or 1.888.234.1114 (Toll Free)

MINNESOTA DEPARTMENT OF EMPLOYMENT
AND ECONOMIC DEVELOPMENT

Labor Market Information Office

Minnesota Workforce **Facts**

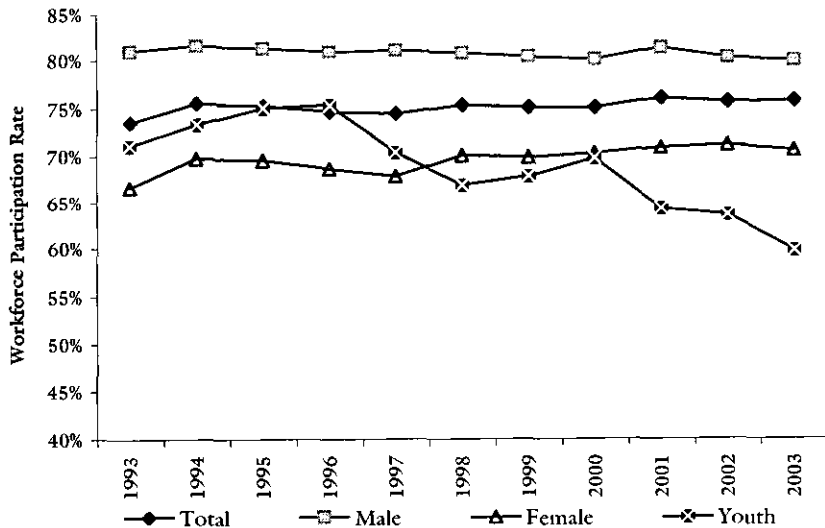
page 3

Workforce Participation Rates

Minnesota, 1993-2003

	Total	Male	Female	Youth (Age 16-19)
1993	73.6 %	81.0 %	66.7 %	71.1 %
1994	75.6	81.6	69.8	73.4
1995	75.3	81.3	69.6	75.1
1996	74.7	80.9	68.7	75.4
1997	74.5	81.1	67.9	70.4
1998	75.4	80.8	70.1	67.0
1999	75.1	80.4	69.9	67.9
2000	75.1	80.1	70.3	69.8
2001	76.1	81.4	70.9	64.4
2002	75.7	80.3	71.2	63.7
2003	75.8	80.0	70.6	59.8

Source: Current Population Survey, Bureau of Labor Statistics, U.S. Department of Labor



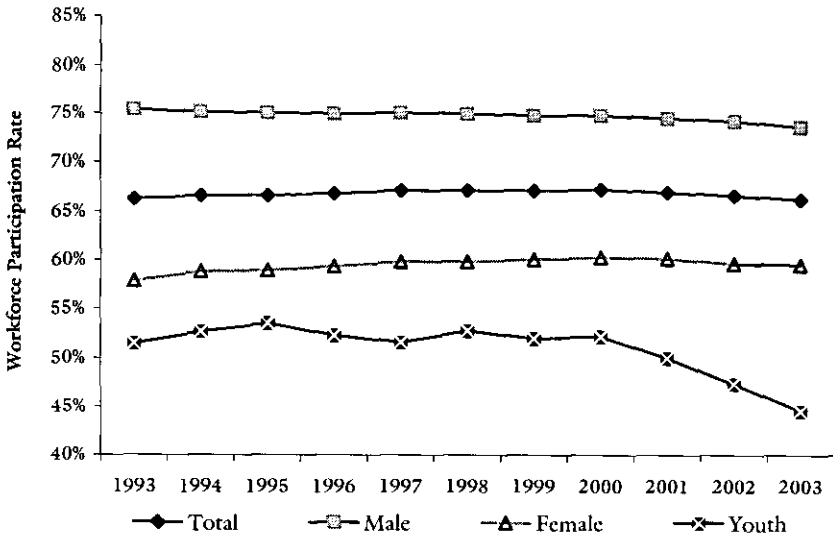
Labor Market Information HelpLine: 651.282.2714 or 1.888.234.1114 (Toll Free)

Workforce Participation Rates

United States, 1993-2003

	Total	Male	Female	Youth (Age 16-19)
1993	66.3 %	75.4 %	57.9 %	51.5 %
1994	66.6	75.1	58.8	52.7
1995	66.6	75.0	58.9	53.5
1996	66.8	74.9	59.3	52.3
1997	67.1	75.0	59.8	51.6
1998	67.1	74.9	59.8	52.8
1999	67.1	74.7	60.0	52.0
2000	67.2	74.7	60.2	52.2
2001	66.9	74.4	60.1	50.0
2002	66.6	74.1	59.6	47.4
2003	66.2	73.5	59.5	44.5

Source: Current Population Survey, Bureau of Labor Statistics, U.S. Department of Labor



Labor Market Information HelpLine: 651.282.2714 or 1.888.234.1114 (Toll Free)

MINNESOTA DEPARTMENT OF EMPLOYMENT
AND ECONOMIC DEVELOPMENT

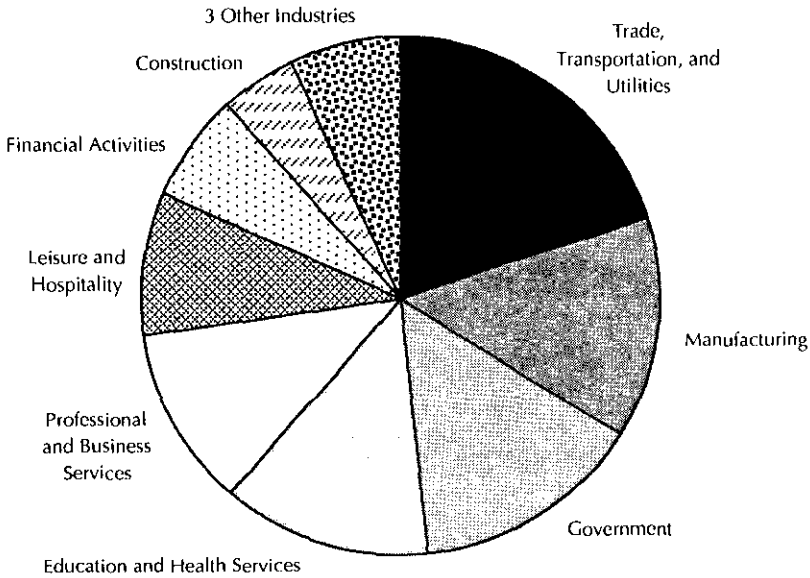
Minnesota Workforce **Facts**

Labor Market Information Office

page 5

Employment by Industry

Minnesota, 2002



Industry	Employment
Trade, Transportation, and Utilities	519,666
Manufacturing	356,808
Government	371,562
Education and Health Services	339,254
Professional and Business Services	296,787
Leisure and Hospitality	229,520
Financial Activities	169,842
Construction	124,046
Other Services	89,442
Information	66,932
Natural Resources and Mining	21,345

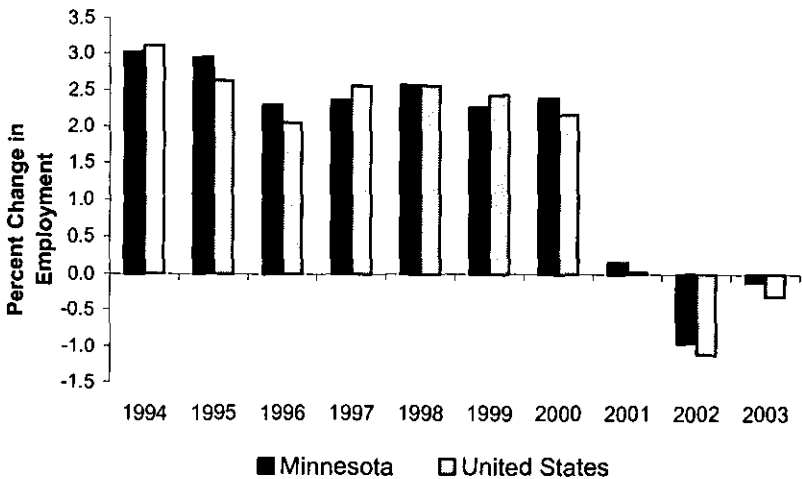
Source: Covered Employment and Wages (CEW), Minnesota Department of Employment and Economic Development

Labor Market Information HelpLine: 651.282.2714 or 1.888.234.1114 (Toll Free)

Nonagricultural Employment

Minnesota and United States, 1993-2003

	Minnesota	United States
1993	2,242,700	110,844,000
1994	2,310,400	114,291,000
1995	2,378,500	117,298,000
1996	2,433,200	119,708,000
1997	2,490,800	122,776,000
1998	2,555,000	125,930,000
1999	2,613,000	128,993,000
2000	2,675,700	131,785,000
2001	2,680,172	131,826,000
2002	2,654,374	130,341,000
2003	2,651,253	129,931,000



Source: Current Employment Statistics (CES), Minnesota Department of Employment and Economic Development, Bureau of Labor Statistics, U.S. Department of Labor

Labor Market Information HelpLine: 651.282.2714 or 1.888.234.1114 (Toll Free)

Employment Projections by Industry

Minnesota and United States, 2000-2010

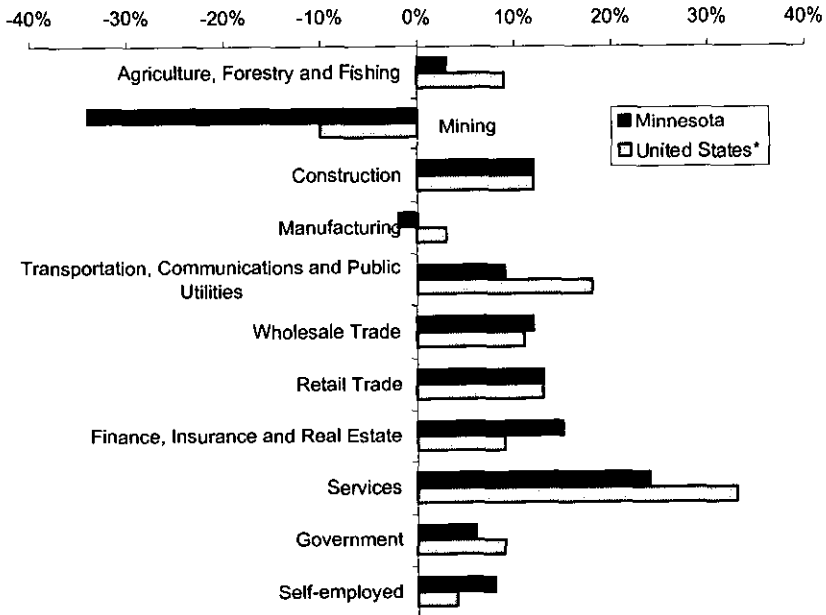
Percent Change in
Employment, 2000-2010
Minnesota United States*

	Minnesota	United States*
Agriculture, Forestry and Fishing	3 %	9 %
Mining	-34	-10
Construction	12	12
Manufacturing	-2	3
Transportation, Communications and Public Utilities	9	18
Wholesale Trade	12	11
Retail Trade	13	13
Finance, Insurance and Real Estate	15	9
Services	24	33
Government	6	9
Self-employed	8	4

Source: Employment Projections, Minnesota Department of Employment and Economic Development, Bureau of Labor Statistics, U.S. Department of Labor

*U.S. employment projections for 2000-2010 were used for this comparison. The latest figures, 2002-2012 U.S. projections, are available at www.bls.gov/emp/home.htm

Percent Change in Number of Jobs, 2000-2010



Labor Market Information HelpLine: 651.282.2714 or 1.888.234.1114 (Toll Free)

Employment Projections by Occupation Group

Minnesota and United States, 2000-2010

Percent Change in Employment, 2000-2010

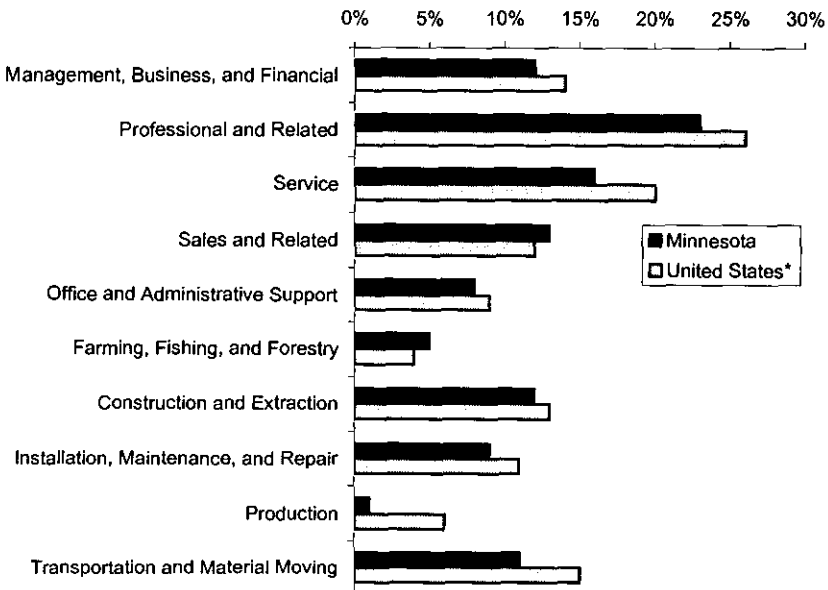
	Minnesota	United States*
--	-----------	----------------

	Minnesota	United States*
Management, Business, and Financial	12 %	14 %
Professional and Related	23	26
Service	16	20
Sales and Related	13	12
Office and Administrative Support	8	9
Farming, Fishing, and Forestry	5	4
Construction and Extraction	12	13
Installation, Maintenance, and Repair	9	11
Production	1	6
Transportation and Material Moving	11	15

Source: Employment Projections, Minnesota Department of Employment and Economic Development, Bureau of Labor Statistics, U.S. Department of Labor

*U.S. employment projections for 2000-2010 were used for this comparison. The latest figures, 2002-2012 U.S. projections, are available at www.bls.gov/emp/home.htm

Percent Change in Number of Jobs, 2000-2010



Labor Market Information HelpLine: 651.282.2714 or 1.888.234.1114 (Toll Free)

Top 10 Fastest-Growing Occupations & Hourly Wages

Minnesota and United States*

Minnesota		Projected Job Growth 2000-2010	2003 4th Qtr. Median Hourly Wage
Rank	Occupation		
1	Computer Support Specialists	91 %	\$19.37
2	Computer Software Engineers, Applications	78	\$34.77
3	Network and Computer Systems Administrators	75	\$26.89
4	Network Systems and Data Communications Analysts	67	\$28.39
5	Desktop Publishers	62	\$16.87
6	Computer Software Engineers, Systems Software	58	\$36.54
7	Computer Specialists, All Other	54	\$30.54
8	Database Administrators	53	\$28.12
9	Medical Records and Health Information Technicians	51	\$12.62
10	Personal and Home Care Aides	51	\$9.79

United States		Projected Job Growth 2000-2010	2003 4th Qtr. Median Hourly Wage
Rank	Occupation		
1	Computer Software Engineers, Applications	100 %	\$35.13
2	Computer Support Specialists	97	\$19.37
3	Computer Software Engineers, Systems Software	90	\$36.68
4	Network and Computer Systems Administrators	82	\$27.15
5	Network Systems and Data Communications Analysts	77	\$28.95
6	Desktop Publishers	67	\$15.66
7	Database Administrators	66	\$27.49
8	Personal and Home Health Aides	62	\$8.05
9	Computer Systems Analysts	60	\$31.16
10	Medical Assistants	57	\$11.86

Source: Employment Projections, Minnesota Department of Employment and Economic Development, Bureau of Labor Statistics, U.S. Department of Labor

*U.S. employment projections for 2000-2010 were used for this comparison. The latest figures, 2002-2012 U.S. projections, are available at www.bls.gov/emp/home.htm

Labor Market Information HelpLine: 651.282.2714 or 1.888.234.1114 (Toll Free)

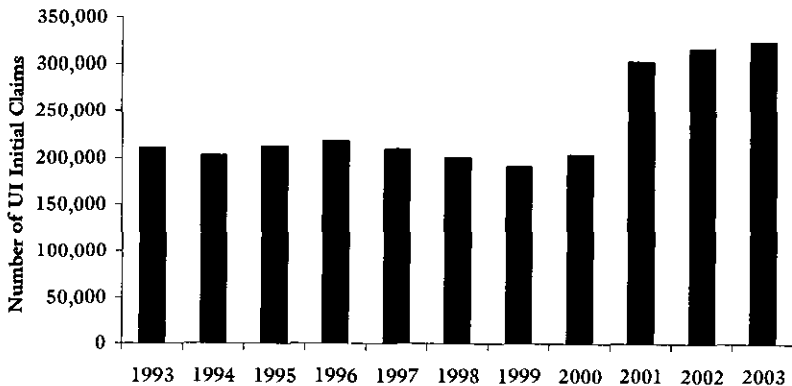
Initial Claims for Unemployment Insurance

Minnesota and United States, 1993-2003

	Minnesota	United States
1993	210,446	17,708,421
1994	202,875	17,664,995
1995	212,265	18,552,774
1996	217,979	18,519,102
1997	209,226	16,797,746
1998	200,334	16,689,609
1999	190,003	15,478,810
2000	203,480	15,646,774
2001	302,676	21,012,173
2002	316,572	21,163,464
2003	323,050	NA

Source: Minnesota Unemployment Benefits Program, Minnesota Department of Employment and Economic Development, Bureau of Labor Statistics, U.S. Department of Labor

Minnesota Claims



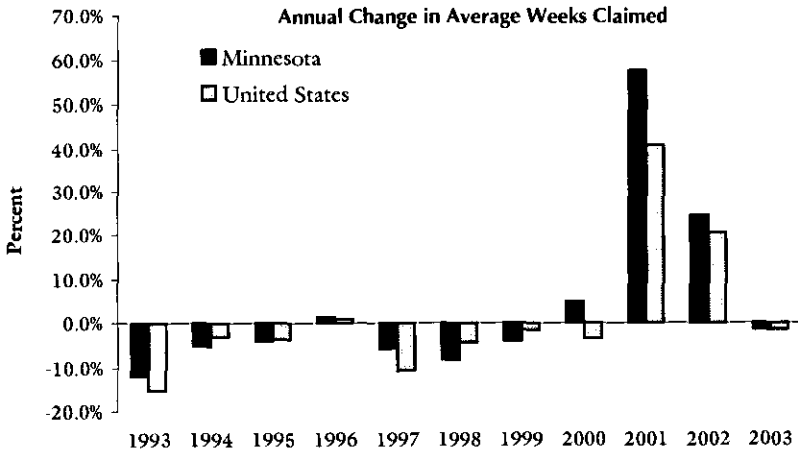
Labor Market Information HelpLine: 651.282.2714 or 1.888.234.1114 (Toll Free)

Average Weeks Claimed*

Insured Unemployed

			Annual Change	
	Minnesota	United States	Minnesota	United States
1993	39,061	2,751,441	-11.7 %	-15.2 %
1994	37,086	2,669,872	-5.1	-3.0
1995	35,551	2,571,951	-4.1	-3.7
1996	36,056	2,595,585	1.4	0.9
1997	33,997	2,322,573	-5.7	-10.5
1998	31,194	2,221,662	-8.2	-4.3
1999	29,944	2,186,901	-4.0	-1.6
2000	31,385	2,110,279	4.8	-3.5
2001	49,469	2,973,783	57.6	40.9
2002	61,646	3,585,437	24.6	20.6
2003	60,655	3,532,703	-1.6	-1.5

* Average weeks claimed is used as a proxy for average number of people claiming unemployment insurance during an average week in the calendar year.



Source: Employment and Training Administration and Bureau of Labor Statistics, U.S. Department of Labor, Calculations done by Minnesota Department of Employment and Economic Development

Labor Market Information HelpLine: 651.282.2714 or 1.888.234.1114 (Toll Free)

Maximum Weekly Benefit Amount

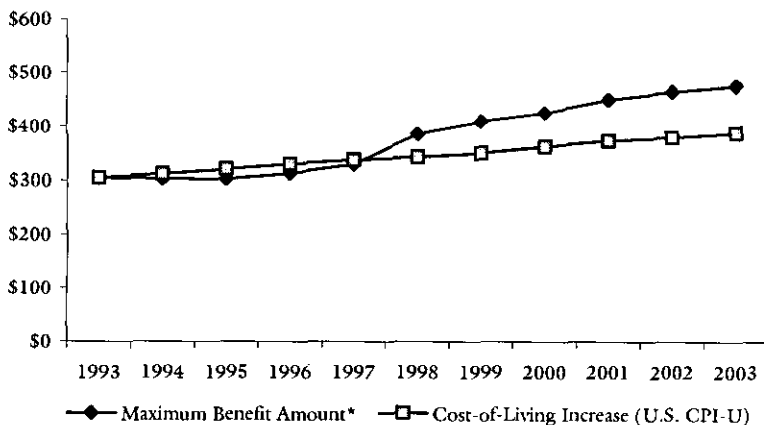
Minnesota, 1993-2003

	Maximum Benefit Amount*
1993	\$305.00
1994	\$304.00
1995	\$303.00
1996	\$314.00
1997	\$331.00
1998	\$386.00
1999	\$410.00
2000	\$427.00
2001	\$452.00
2002	\$467.00
2003	\$478.00

*Effective August 1 of every year.

Source: Minnesota Unemployment Benefits Program, Minnesota Department of Employment and Economic Development

Maximum Benefit Amount Compared to Cost-of-Living Increase



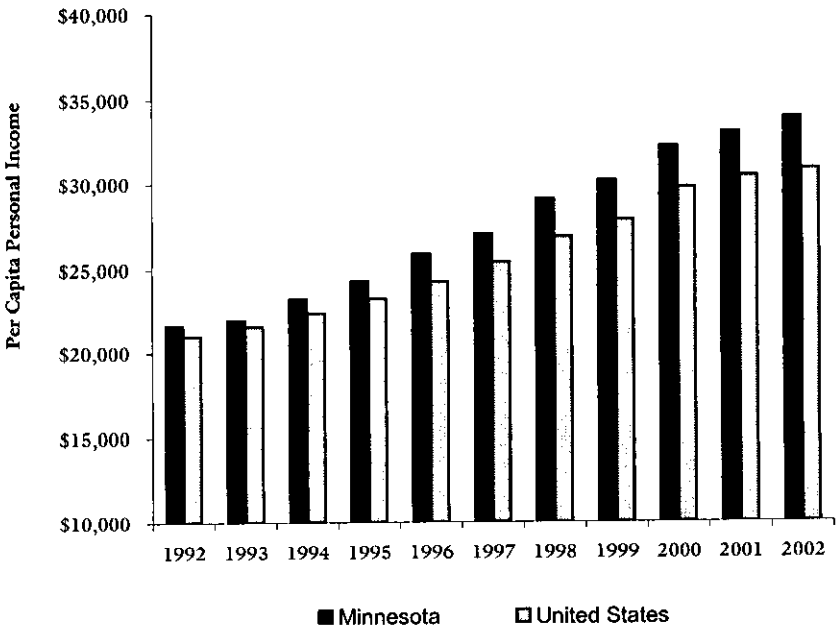
Labor Market Information HelpLine: 651.282.2714 or 1.888.234.1114 (Toll Free)

Per Capita Personal Income, *not adjusted for inflation*

Minnesota and United States, 1992-2002

	Minnesota	United States
1992	\$21,582	\$20,960
1993	\$21,903	\$21,539
1994	\$23,241	\$22,340
1995	\$24,295	\$23,255
1996	\$25,904	\$24,270
1997	\$27,086	\$25,412
1998	\$29,092	\$26,893
1999	\$30,194	\$27,880
2000	\$32,231	\$29,760
2001	\$33,059	\$30,413
2002	\$33,895	\$30,832

Source: Bureau of Economic Analysis, U.S. Department of Commerce



Labor Market Information HelpLine: 651.282.2714 or 1.888.234.1114 (Toll Free)

Current Poverty Guidelines and Lower Living Standard Income Levels (LLSIL)

Family Size	Poverty Guidelines for all States ¹	70% LLSIL CUTOFF FOR MIDWEST REGION	
	Effective February 13, 2004	Metro Counties*	Non-Metro Counties
1	\$9,310	\$7,370	\$6,940
2	\$12,490	\$12,070	\$11,370
3	\$15,670	\$16,570	\$15,610
4	\$18,850	\$20,450	\$19,270
5	\$22,030	\$24,140	\$22,740
6	\$25,210	\$28,230	\$26,600
7	\$28,390	\$32,320	\$30,460
8	\$31,570	\$36,410	\$34,320
add'l	\$3,180	\$4,090	\$3,860

¹ except Alaska and Hawaii

**Total hourly wage needed at 40 hours per week,
52 weeks per year to meet:**

Family Size	Poverty Guidelines	70% LLSIL CUTOFF FOR MIDWEST REGION	
		Metro Counties*	Non-metro Counties
1	\$4.48	\$3.54	\$3.34
2	\$6.00	\$5.80	\$5.47
3	\$7.53	\$7.97	\$7.50
4	\$9.06	\$9.83	\$9.26
5	\$10.59	\$11.61	\$10.93
6	\$12.12	\$13.57	\$12.79
7	\$13.65	\$15.54	\$14.64
8	\$15.18	\$17.50	\$16.50
add'l	\$1.53	\$1.97	\$1.86

* Metro counties include Anoka, Benton, Carver, Chisago, Clay, Dakota, Hennepin, Houston, Isanti, Olmsted, Polk, Ramsey, Scott, Sherburne, St. Louis, Stearns, Washington and Wright.

Source: Federal Register, U.S. Department of Health and Human Services, U.S. Department of Labor

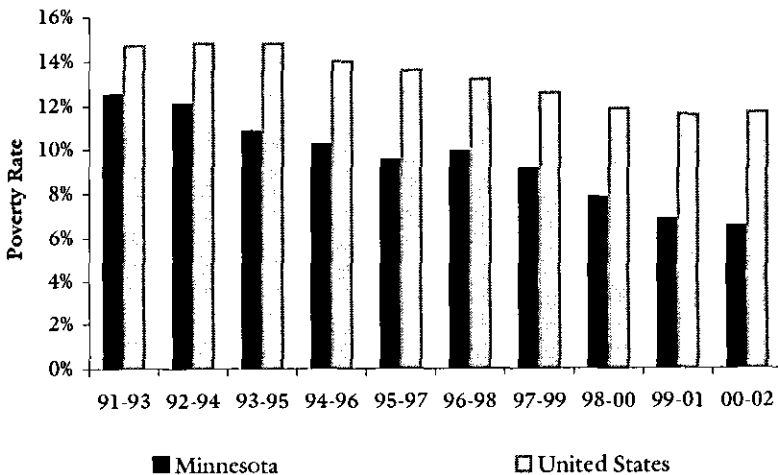
Labor Market Information HelpLine: 651.282.2714 or 1.888.234.1114 (Toll Free)

Poverty Rates

Three-year averages, Minnesota and United States

	Minnesota	United States
1991-1993	12.5 %	14.7 %
1992-1994	12.1	14.8
1993-1995	10.8	14.8
1994-1996	10.2	14.0
1995-1997	9.5	13.6
1996-1998	9.9	13.2
1997-1999	9.1	12.6
1998-2000	7.8	11.9
1999-2001	6.8	11.6
2000-2002	6.5	11.7

Source: U.S. Census Bureau



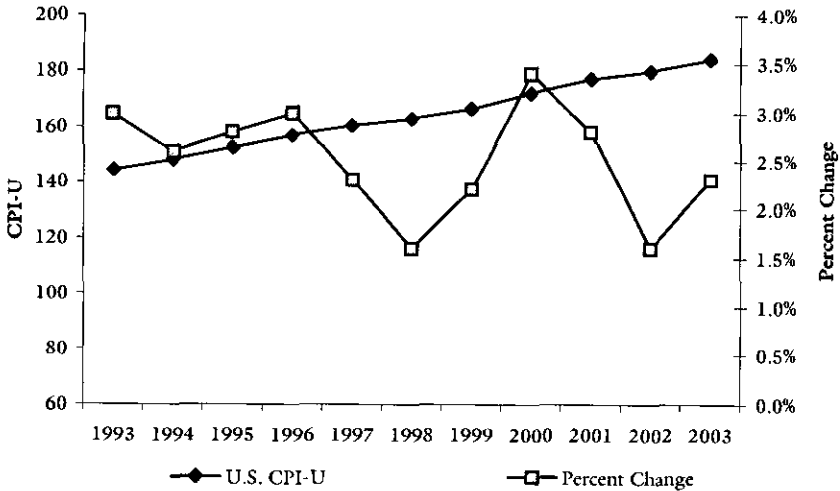
Labor Market Information HelpLine: 651.282.2714 or 1.888.234.1114 (Toll Free)

Consumer Price Index for All Urban Consumers

CPI-U, 1993-2003

	U.S. CPI-U 1982-1984=100	Percent Change
1993	144.5	3.0 %
1994	148.2	2.6
1995	152.4	2.8
1996	156.9	3.0
1997	160.5	2.3
1998	163.0	1.6
1999	166.6	2.2
2000	172.2	3.4
2001	177.1	2.8
2002	179.9	1.6
2003	184.0	2.3

Source: Bureau of Labor Statistics, U.S. Department of Labor



Labor Market Information HelpLine: 651.282.2714 or 1.888.234.1114 (Toll Free)

Useful Websites

Minnesota Department of Employment and Economic Development

<http://www.deed.state.mn.us>

Minnesota Labor Market Information

<http://www.mnwfc.org/lmi>

Internet System for Education and Employment Knowledge (ISEEK)

<http://www.iseek.org>

Links to Minnesota data sources

<http://www.minnstats.state.mn.us>

Minnesota Planning

<http://www.mnplan.state.mn.us>

Bureau of Labor Statistics, U.S. Department of Labor

<http://www.bls.gov>

Bureau of Economic Analysis, U.S. Department of Commerce

<http://www.bea.gov>

Federal Reserve Bank of Minneapolis

<http://www.minneapolisfed.org>

U.S. Census Bureau, U.S. Department of Commerce

<http://www.census.gov>

Poverty Statistics, U.S. Census Bureau

<http://www.census.gov/hhes/www/poverty.html>

Unemployment Insurance

<http://www.uimn.org>

Labor Market Information HelpLine: 651.282.2714 or 1.888.234.1114 (Toll Free)

Definitions of Labor Market Terms

Bureau of Labor Statistics (BLS):

The BLS is part of the U.S. Department of Labor and functions as the principal data-gathering agency of the Federal government in the field of labor economics. The BLS collects, processes, analyzes and disseminates data relating to employment, unemployment, the labor force, productivity, prices, family expenditures, wages, industrial relations, and occupational safety and health.

Civilian Workforce:

The sum of all employed and unemployed noninstitutionalized persons 16 years of age or older. Members of the armed forces are excluded.

Consumer Price Index (CPI):

The CPI is a measure of the average change in the prices paid by urban consumers for a fixed-market basket of goods and services. There is a separate index for the Minneapolis-St. Paul Metropolitan Statistical Area (MSA) but not for the state of Minnesota.

Covered Employment and Wages (CEW):

A Federal/state cooperative program that collects and compiles employment and wage data for workers covered by state unemployment insurance laws and Federal civilian workers covered by Unemployment Compensation for Federal Employees (UCFE).

Initial Claims:

Federal term for initial applications for unemployment benefits; used as an economic indicator to measure emerging unemployment.

Local Area Unemployment Statistics (LAUS) Program:

A Federal/state cooperative program that produces employment, labor force, unemployment and unemployment rate estimates for states and local areas.

Metropolitan Statistical Area (MSA):

A term applied by the U.S. Office of Management and Budget to counties that have one or more central cities and that meet specified criteria for population density, commuting patterns and social and economic integration.

Unemployment:

An estimate of the number of persons who did not have a job but were available for work and actively seeking work during the calendar week that includes the 12th day of the month.

Unemployment Insurance (UI):

A Federal government program in Minnesota that collects taxes (premiums) from employers in order to pay benefits to persons who are unemployed through no fault of their own. Unemployment insurance benefits help provide economic stability to individuals and communities during times of economic downturn.

Unemployment Rate:

The number of unemployed persons as a percentage of the civilian labor force. Derived from LAUS (see above).

Labor Market Information HelpLine: 651.282.2714 or 1.888.234.1114 (Toll Free)

positively
Minnesota

Department of Employment
and Economic Development

Minnesota
Workforce
Facts

MINNESOTA DEPARTMENT OF EMPLOYMENT AND ECONOMIC DEVELOPMENT
Labor Market Information Office

March 2004

www.mnwfcd.org/lmi

Labor Market Information HelpLine: 651.282.2714 or 1.888.234.1114 (Toll Free)

Stock Number: DEED-03972-04
3/04-2,000