

06 - 0486



# FY 2006 Annual Report

## Rural Minnesota Energy Board and SRDC host Metropolitan Counties Energy Task Force

### Inside this issue:

<b>Transit Coordination</b>	<b>2</b>
<b>CERTs</b>	<b>3</b>
<b>Call Center</b>	<b>3</b>
<b>Revolving Loan Fund</b>	<b>4</b>
<b>JOBZ</b>	<b>4</b>
<b>Financials</b>	<b>5</b>
<b>Commissioners</b>	<b>7</b>

As part of a joint project between the Rural Minnesota Energy Board (RMEB) and the Metropolitan Counties Energy Task Force (MCETF), the SRDC and the RMEB hosted the Southwest Minnesota Renewable Energy Tour on June 22nd and 23rd.

Highlights of the tour included: a stop in Redwood Falls at the FUMPA bio-diesel refining facility; lunch at the Midwest Center for Wind Energy sponsored by the Southwest Initiative Foundation; a tour of wind towers led by former Lincoln County Commissioner Jim Nichols; a stop at Dan Juhl's wind farm in Woodstock; an

evening panel discussion in Pipestone and a tour of the Agri-Energy Ethanol facility in Luverne.

The RMEB and the MCETF

are in the beginning stages of a collaborative effort to utilize the wind resources in southwest and south central

Minnesota to provide cost

effective renewable energy to County facilities in the Twin Cities Metro area.



*Tour participants enter the base of a wind tower on the Nichols' farm near Lake Benton.*

## Call Center is designated statewide Client Service Center for Medicare Part D Case Problems

Continuing our efforts to provide the best possible service to the elderly, the Minnesota River Area Agency on Aging's Slayton Call Center was awarded a grant to provide Client Service Center services to

Medicare Part D enrollees throughout the State of Minnesota.

Beginning July 1, 2006 the MN SHIP Client Services Center will streamline and create a centralized access point for all work related to

Part D client needs with a particular focus on the needs of dual eligibles.

Access to the Client Service Center will be through the Senior LinkAge Line™ at:

**1-800-333-2433**



## Be Prepared

Residents like to see results from local government. At the end of the day people want to know how we are prepared to uphold the constitutional pledge to protect "life, liberty and the pursuit of happiness."

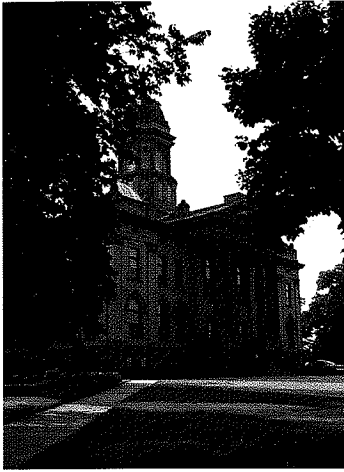
Community planning is one way we work to balance these protections. Last year, Cottonwood County completed a multi-year comprehensive land use plan that gave elected officials a set of tasks to take the county forward. Already, they have used the plan to revise the zoning ordinance, balancing the rights of property owners to mine gravel while assuring

other property owners have clean water in their wells.

SRDC is working with Cottonwood County, along with Rock, Murray and Jackson counties, to develop new local water management plans. These water plans, following guidelines and approval of the Minnesota Board of Water and Soil Resources (BWSR), take a much closer look at surface water quality and groundwater protection, to assure that we will continue to enjoy the water necessary to maintain our rural quality of life.

More generally, events of

recent years have reminded us of the importance of being prepared for any type of emergency. We are used to responding to floods, tornadoes and blizzards, but what about wildfire? a chemical spill? or terrorist threats to our nation's food supply? All-Hazard Mitigation Plans are one tool to accurately assess your community's readiness to respond to natural or man-made disasters. These plans are also required to be eligible for certain federal funding programs. Today is the day to be prepared to show the result of our hard work. "Yes, we are prepared."



Cottonwood County Courthouse

## Transit Coordination Project

Last year, the SRDC in cooperation with Region 9 Development Commission began working on a transit coordination project that focused on transit for the elderly. We held a Regional Transit Forum in December and individual County Transit meetings in February and March 2006.

The results of these meetings varied, several coordination issues were identified that were forwarded to the State Agency Transit Coordinating Committee. Some issues were county specific and follow up meetings were held as needed. Some of the results were: the opening of communication between transit and potential users; the modification of health care facility discharge procedures; changes in transit system route service. Some

issues will require more work on the regional level, such as meeting with health care providers to improve the understanding of the relationship of transit / access to services and their facility. Differences in how rules and regulations are interpreted also create inconsistencies between human service agencies and transit. A regional summary as well as individual summaries are available upon request.

For 2007, we will be working on a continuation of the DHS CS/SD Grant by coordinating Elderly Transit Project work activities in Regions 8 and 9 with Western Community Action and the Region 9 Project Coordinator. The focus will be on working with the health care community to increase awareness of the

need for travel coordination and the impacts making travel arrangements has on patients, and increasing communication beyond public transit system boundaries.

Also in 2007, the SRDC will be working on the development of a Public Transit and Human Service Transportation Plan. The plan is to address the SAFETEA-LU (the Federal Transportation Act) provisions which require locally developed public transit-human service coordination plans and must be in place to access federal funds. The plan needs to address the following target populations: low income, disabled, elderly, and transportation disadvantaged individuals.

**"Differences in how rules and regulations are interpreted...create inconsistencies between human service agencies and transit."**



## CERTs Teams Win Minnesota Environmental Initiative's Partnership of the Year Award

The Clean Energy Resource Teams (CERTs) Project was awarded the Partnership of the Year Award by the Minnesota Environmental Initiative at their annual awards dinner May 3, 2006.

The Clean Energy Resource Teams projects consist of six regional teams around Minnesota. Each has tailored a plan for a clean energy future that will make the most of their region's renewable resources and other technologies. They explore

problems associated with conventional energies and their uses, and identify alternative and preferred forms of energy, which will help sustain a clean and affordable future for Minnesota and its regions.

SRDC staff member Annette Bair is the Coordinator for the Southwest CERTs. Congratulations to Annette and all of the CERTs partners on this award.



*CERTs Project members accept the MEI Partnership Award*

## FY 2006 Call Center Statistics

If you or a family member needs information about the availability of services in your community, contact Senior LinkAge Line™. Information is just a phone call away. The Senior LinkAge Line™ is where you will find trained specialists who will assist you in finding the information you need. The Senior LinkAge

Line™ is an information and assistance service which makes it easy for older adults and their families to find community-based services and help with Medicare and insurance issues.

In the past year, the Slayton Call Center had 36,824 contacts and served 22,474 people. There are 106,195

seniors 60+ in the 27 counties served by the call center, so in the last year 21% of the seniors in the Minnesota River Area Agency on Aging service area received assistance from the Slayton MNRAAA staff. 8,587 of these people were within the nine counties served by the SRDC.



**1-800-333-2433**

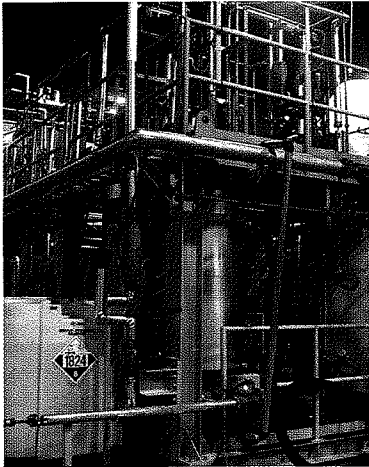
## Joint Pipestone Project wins 2006 Project of the Year Award

This award is given to a project in the region that has major benefit to the Region. The SRDC assisted the City of Pipestone with a project to build a pre-treatment plant to reduce effluent levels caused primarily by the discharge from Ellison Meats. The federal Economic Development Administration

awarded the project \$741,000 as part of a \$1.2 million project. This project alleviated the discharge problems and allowed Ellison Meats to not only continue its Pipestone operations but also to expand its employment. This project demonstrates the benefits of the public and private sector coming together

to come up with a solution to a problem that benefits all. Accepting the award on behalf of the City of Pipestone was Councilmember Harry Hansen, and from Ellison Meats, Chief Financial Officer Tom Finke and Dave Trygstad.





**Bio-diesel refining equipment at FUMPA Bio-fuels in Redwood Falls**

## **Regional Integration for the Future: Renewable Energy and Land Use Planning**

On February 22nd and 23rd 2006, the SRDC, in association with the National Association of Development Organizations (NADO) Research Foundation, the Environmental Protection Agency (EPA), the National Association of Counties (NACo), Association of MN Counties (AMC) and the Redwood Area Development Corporation hosted a Conference on Renewal Energy

and Land Use Planning at Jackpot Junction in Morton.

Beginning with a tour of renewable energy facilities in and around Redwood County, participants learned about current renewable energy projects and how they related to land use and other environmental regulations.

The conference brought together a broad range of interests from developers to policy makers to regulatory

agencies to discuss the impacts of renewable energy projects and to highlight some of the areas where barriers may exist to development.

Mike Bull, Assistant Commissioner from the Minnesota Department of Commerce, was the keynote speaker during Thursday's events, and presented information on the active role that the State of Minnesota has taken in the development of renewable energy policy.

## **Revolving Loan Fund Update**

**"In FY 2006, the RLF approved 8 new loans totaling \$389,700. These investments leveraged \$3,446,300 in private investment..."**

As part of its economic development efforts in the region, the SRDC administers an Economic Development Administration (EDA) Revolving Loan Fund (RLF). The purpose of the RLF is to directly loan funds to assist start-up or existing retail, service, manufacturing and

distribution businesses with fixed asset, working capital and real estate financing. Loans may range in size from \$5,000 to \$100,000

In FY 2006, the RLF approved 8 new loans totaling \$389,700. These investments leveraged \$3,446,300 in private investment and helped

to create 15 jobs and retain 34 jobs. The SRDC RLF currently has 41 active loans totaling \$1,984,623.

If you are interested in obtaining an RLF loan please contact Deputy Director Nan Larson.

## **JOBZone Update**



JOBZones are a tool designed to stimulate business activity in Greater Minnesota. Originally passed in 2003, the program was amended in 2005. An eligible business in the zone will operate in an environment nearly free of taxes. These tax incentives

are intended to assist new and expanding businesses by lowering their overall costs, thus facilitating growth.

The SRDC acts as the JOB-Zone Administrator for the Southwest Regional JOBZone which includes 13 counties, 48 cities, 21 townships and

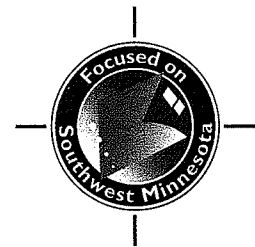
more than 4,000 acres. Since the program's inception in 2004, there have been 38 completed deals in 15 cities in 11 counties adding 823 new jobs, retaining 579 jobs and spurring over \$100 million in capital investments.



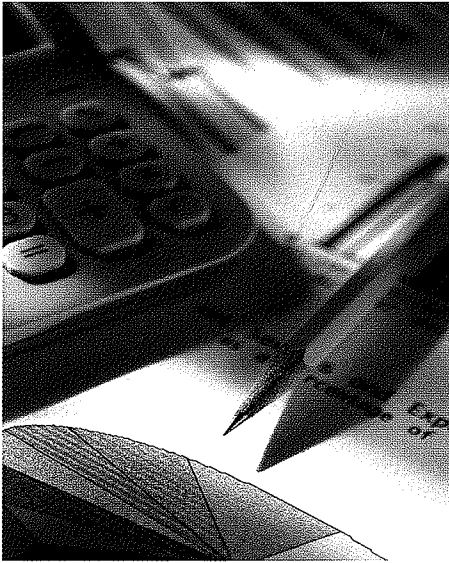
	FY2006 FINAL BUDGET	FY2006 YEAREND PROJECTIONS
<b>Revenues</b>		
Tax Levy	252,000	258,610
MNRAAA Federal Adm-Pdc	66,098	59,430
MNRAAA Federal - I & A	275,710	252,840
MNRAAA State - I & A	98,060	98,060
Eldercare Development Partnership	28,281	28,281
Economic Dev. Adm.	62,891	62,891
MN/DOT	50,000	48,600
Contracts for Services	213,357	214,417
Dept. Public Safety-Hazard Mitigation	15,500	14,000
CERTS Funds	20,688	13,257
Interest Earned & Miscellaneous	23,378	30,619
Vehicle Receipts	24,000	25,904
SW MN Foundation	0	1,000
Designated for Human Service Projects	5,300	5,300
Reserves used for Equipment Purchases	35,000	33,474
<b>Total Revenues</b>	<b>1,170,263</b>	<b>1,146,683</b>
<b>Expenditures</b>		
Committee Expense	42,000	40,378
Salaries & Fringe	825,418	831,894
Staff Travel	75,000	72,685
Office Space	32,500	31,137
Postage	16,395	12,391
Communications	15,620	12,706
Print/Publication	15,100	2,324
Supplies	18,020	17,178
Insurance	4,450	4,417
Depreciation (Non-building)	18,500	16,099
Computer	15,658	13,282
Equipment	35,000	33,473
Other	18,153	16,208
Professional Services	15,350	16,026
Debt Service-Principal & Interest	11,800	11,800
Office Building Principal Payment	20,507	20,507
<b>Total Expenditures</b>	<b>1,179,471</b>	<b>1,152,506</b>
<b>Balance</b>	<b>-9,208</b>	<b>-5,823</b>
Incr/(Decr) in Equipment Reserve	-16,500	-17,375
Incr/(Decr) in Building Reserve	12,265	12,465
Incr/(Decr) in Human Service Project Reserve		-5,300
<b>Incr/(Decr) in Unrestricted Reserve</b>	<b>-4,973</b>	<b>4,387</b>
Tax Revenue (Bond)	232,080	232,080
Allowance for delinquencies (5%)-2.5%PY	-5,624	-5,802
Present reserve for FY07 bond payments	9,412	32,998
Bond Payment -August, 2005	-25,445	-23,035
Bond Payment-February, 2006	-195,445	-198,035
Reserve for Future Bond Payments	14,978	38,206

**Southwest**  
**Regional**  
**Development**  
**Commission**  
**July 1, 2005-**  
**June 30, 2006**

**Budget v. Actual**



**Southwest Regional Development Commission FY 2007 Budget**



**Audited Governmental Activities  
for the Year Ended June 30, 2005**

Revenues

Program Revenues	
Charges for Services and Other	388,113
Operating Grants	580,998
General Revenues	
Property Taxes—General	253,486
Property Taxes—Debt Service	232,080
Interest Revenues	17,855
<b>Total Revenues</b>	<b>1,472,532</b>

Expenses

Government Activities	1,256,201
<b>Total Expenses</b>	<b>1,256,201</b>
<b>Change in Net Assets</b>	<b>216,331</b>
<b>Beginning Net Assets</b>	<b>874,043</b>
<b>Ending Net Assets</b>	<b>1,090,374</b>

The FY 2005 Audit was conducted by Minehart, McKee & Associates, Certified Public Accountants, Marshall, Minnesota. The auditor's report expresses an unqualified opinion on the general purpose financial statements of the Southwest Regional Development Commission.

**FY2007  
BUDGET**

**Revenues**

Tax Levy	258,000
MNRAAA-Adm/Pdc Funds	71,402
MNRAAA-Information & Assistance Funds	318,574
MNRAAA-Eldercare Development Partnership	28,281
Economic Development Administration	54,628
MN Department of Transportation	50,000
Current Contracts	147,845
Dept. Public Safety-Hazard Mitigation	20,000
CERTS Funds-LCMR & MN Project-Blandin	19,043
Interest Earned & Miscellaneous	42,220
In-kind Match for Programs	35,094
Reserves used for Equipment Purchases	25,400
<b>Total Revenues</b>	<b>1,070,487</b>

**Expenditures**

Committee Expense	40,000
Salaries & Fringe	790,033
Staff Travel	68,000
Office Space	44,000
Postage	10,150
Communications	13,966
Print/Publication	9,010
Supplies-Mtg/Wkshp Expenses	10,872
Insurance	3,500
Depreciation (Non-building)	18,500
Audits	6,000
Computer	13,400
Equipment	25,400
Other	14,268
Consultant/Contracted Services/Legal	2,900
MNRAAA Consortium Match	14,115
Program In-kind Match	35,094
Debt Service-Principal & Interest	11,800
Office Building Principal Payment	9,646
<b>Total Expenditures</b>	<b>1,140,654</b>
<b>Balance</b>	<b>-70,167</b>

Incr/(Decr) in Equipment Reserve	-6,900
Incr/(Decr) in Building Reserve	14,302
Incr/(Decr) in Unrestricted Reserve	-77,569

Tax Revenue (Bond)	232,080
Allowance for delinquencies (2.5%)	-5,802
Present reserve for FY07 bond payments	36,690
Bond Payment -August, 2006	-20,629
Bond Payment-February, 2007	-200,629
Reserve for Future Bond Payments	41,710

## FY 2006 Southwest Regional Development Commission Members

Connie Knorr ----- Cottonwood County Municipalities  
 Darrell Holmberg ----- Cottonwood County Town Boards  
 Gary Sorenson\*\* ----- Cottonwood Co Commissioners  
 Jim Schneider ----- Jackson County Municipalities  
 Richard Peterson\* ----- Jackson County Town Boards  
 Craig Rubis\*\* ----- Jackson County Commissioners  
 Vacant ----- Lincoln County Municipalities  
 Eloise Hauschild ----- Lincoln County Town Boards  
 Larry Hansen\*\* ----- Lincoln County Commissioners  
 Joanne Myrvik ----- Lyon County Municipalities  
 Lori Grant ----- Lyon County Town Boards  
 Bob Fenske\* ----- Lyon Co Commissioners  
 Miron Carney ----- Murray County Municipalities  
 Charles V. Swan ----- Murray County Town Boards  
 Bill Sauer\*\* ----- Murray County Commissioners  
 Patricia Jansen ----- Nobles County Municipalities  
 Paul Langseth ----- Nobles County Town Boards  
 David Benson\* ----- Nobles County Commissioners  
 Harry L. Hansen ----- Pipestone County Municipalities  
 Wally Bucher ----- Pipestone County Town Boards  
 Jack Keers\* ----- Pipestone County Commissioners  
 Marlo Sander ----- Redwood County Municipalities  
 Werner Fischer\* ----- Redwood County Town Boards  
 Gene Short\*\* ----- Redwood Co Commissioners  
 Fabian Deutsh ----- Rock County Municipalities  
 Vern Vander Pol ----- Rock County Town Boards  
 Robert Jarchow\*\* ----- Rock County Commissioners  
 Bob Byrnes\* ----- City of Marshall  
 Lyle TenHaken\* ----- City of Worthington  
 Dan Zimansky\* ----- Region Eight School Boards  
 Dick Gewerth ----- Region Eight School Boards  
 Abdullahi Noor ----- Region Eight Cultural Diversity  
 Steve Thovson ----- SW Center for Independent Living  
 Mary Mulder ----- SW MN Private Industry Council  
 Liz Struve ----- Southwest MN State University  
 Vacant ----- Health & Human Services

\*\* Indicates Current & FY2006-Executive Comm. Members

\*Indicates Current SRDC Board Members



*SRDC Chair and Redwood County Commissioner Gene Short on the ladder inside a wind tower during the Renewable Energy Tour*

**Thank You to the  
 following SRDC  
 Commissioners whose  
 terms expired in FY2006:  
 Kert Reedstrom, Gerald  
 Willert, and Brad Hoekstra.**

### FY2006 PROJECT REVIEWS

During Fiscal Year 2006 the Southwest Regional Development Commission reviewed 18 projects from within the Region to avoid duplication and insure wise use of public funds. If you are interested in receiving a complete listing of the project reviews for FY06, please contact the SRDC office.

**SOUTHWEST REGIONAL  
DEVELOPMENT COMMISSION**

2401 Broadway Avenue  
Slayton, MN 56172

Phone: 507-836-8547  
Fax: 507-836-8866  
Email: [srdc@swrdc.org](mailto:srdc@swrdc.org)

**[www.swrdc.org](http://www.swrdc.org)**



"It is the mission of the Southwest Regional Development Commission to address the economic, social, physical, and governmental needs and opportunities of Southwestern Minnesota; while transcending traditional jurisdictional configurations. Further, to apply a regional perspective to problems, allowing for a coordinated effort by local units of government to address the needs of the region's citizenry and the activities of area agencies resulting in the sharing of regional private and public resources while increasing the efficiency of government in general.

In addition, the Commission shall serve as the mechanism for initiating change in local, regional, State, and Federal policy, programs and regulations translating the region's concerns into a blueprint of action."

**CURRENT SRDC STAFF MEMBERS**

<u>Name</u>	<u>Title</u>	<u>Email</u>	<u>Extension</u>
Jay Trusty -----	Executive Director	<a href="mailto:execdir@swrdc.org">execdir@swrdc.org</a>	106
Nan Larson -----	Deputy Director	<a href="mailto:nanlarson@swrdc.org">nanlarson@swrdc.org</a>	108
Maddy Forsberg -----	Aging Program Director	<a href="mailto:swaaa@swrdc.org">swaaa@swrdc.org</a>	201
Annette Bair -----	Physical Development Director	<a href="mailto:phydev@swrdc.org">phydev@swrdc.org</a>	101
Dianne Crowley -----	Finance Director	<a href="mailto:dcrowley@swrdc.org">dcrowley@swrdc.org</a>	104
Robin Weis -----	Program Development Specialist	<a href="mailto:srlinkage@swrdc.org">srlinkage@swrdc.org</a>	112
John C. Shepard, AICP -----	Development Planner	<a href="mailto:jshepard@swrdc.org">jshepard@swrdc.org</a>	103
Rhonda Wynia -----	Administrative Specialist	<a href="mailto:rwynia@swrdc.org">rwynia@swrdc.org</a>	114
Helen Brinks -----	Account Specialist	<a href="mailto:hbrinks@swrdc.org">hbrinks@swrdc.org</a>	116
Linda Tobias -----	Information & Referral Specialist III	<a href="mailto:lindat@swrdc.org">lindat@swrdc.org</a>	109
Gail Radke -----	Information & Referral Specialist III	<a href="mailto:gailr@swrdc.org">gailr@swrdc.org</a>	202
Kathy Schreiber -----	Administrative Assistant II	<a href="mailto:srdc@swrdc.org">srdc@swrdc.org</a>	110
Donna Clarke -----	Information & Referral Specialist I	<a href="mailto:donnac@swrdc.org">donnac@swrdc.org</a>	113
Julie Stewart -----	Information & Referral Specialist I	<a href="mailto:julies@swrdc.org">julies@swrdc.org</a>	203
Rose Bleyenbergh -----	Information & Referral Specialist I	<a href="mailto:roseb@swrdc.org">roseb@swrdc.org</a>	204