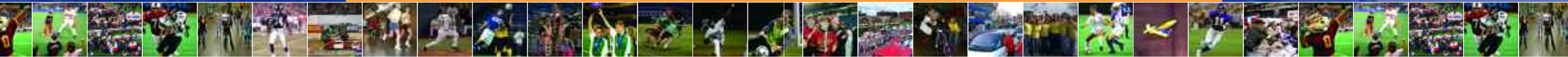


2004 Report to the Community





Hiawatha Line LRT station, new FieldTurf among 2004 Metrodome enhancements

To the community: This past year was another exciting chapter in the story of the nation's most versatile and utilized stadium.

In 2004, more than 3 million people entered the Metrodome to witness or participate in events large and small — everything from watching the Twins roll to their third consecutive American League Central title, to having their fitness level tested in preparation for serving in the United States armed forces.

These 3 million Metrodome guests and patrons were greeted by major stadium improvements designed to make the games better, accessibility greater and the fan experience richer. Constantly improving and updating the stadium is central to our mission of protecting the public's investment in the Metrodome.

Metrodome Improvements

In 2004, two major enhancements were completed, one outside the stadium and one inside.

The most significant development outside the stadium was the reopening of the Metrodome Plaza, which underwent extensive renovation and improvement in conjunction with completion of the Hiawatha light-rail line's Metrodome/Downtown East station. The improved Plaza and the integrated Hiawatha Line station were significant additions to the Metrodome community's infrastructure, and immediately made the stadium the most easily accessible sports facility in the region.

Hiawatha Line ridership levels to and from Metrodome events have significantly exceeded initial projections. Ridership is also expected to increase now that the line has been completed to Bloomington, and as more people become comfortable with this exciting new mode of transport.

Another significant addition outside the stadium was the construction of new fan-friendly, state-of-the-art ticket booths outside gates F and H. This \$300,000 addition gives fans instant access to the best available tickets through a direct electronic link to ticketing operations.

Inside the Metrodome, players and fans alike responded very favorably to the installation of FieldTurf, the most naturally playing indoor turf available. FieldTurf replaced the AstroTurf 8 which was installed in 1995. FieldTurf features individual "blades" just like real grass, and replicates natural soil with an infill that consists of sand and NIKE grind (ground-up bits of recycled NIKE sneakers). Such systems are in use in facilities throughout the country and are overwhelmingly preferred by players.

This year also marked the first full year of operation for the Metrodome's LED "ribbon boards" — more than 800 feet of fascia digital displays that bring full digital video, graphics and animation to the lower ring of the Metrodome's upper concourse. Installation of the digital displays began in late 2003. They feature the same Daktronics technology as the Metrodome's two 20-foot by 36-foot Daktronics ProStar VideoPlus displays, which were installed in 2001.

Also completed at the end of 2003 was the multi-year project to upgrade every permanent concessions stand in the Metrodome. The last five stands, located in the stadium's upper deck, were completed in late 2003.

Ensuring opportunities in "Minnesota's Rec Room"

Continuously updating the Metrodome and maximizing the fan experience is central to the mission of the MSFC. The statutory mandate that created the MSFC also directs the organization to lead the effort to retain Minnesota's professional sports teams. The MSFC has initiated several major studies on sports facilities in Minnesota to provide information and perspective on the massive changes occurring nationally in the professional sports industry and to assist the citizenry in determining how Minnesota can or should respond. As part of this ongoing effort, MSFC Chair Roy Terwilliger and Executive Director Bill Lester presented "Stadium Funding and Referenda: A Historical Perspective" to the Minnesota House of Representatives Taxes Committee.

The legislative charter that established the MSFC also ensures that the stadium is a community facility, not the sole province of professional athletes. Out of more than 300 event days per year at the Metrodome, fewer than 100 feature professional or major college sports. The rest of the event days are used by high schools and colleges, and for community and cultural events, a listing of which is included in this report. The MSFC will continue to work tirelessly to ensure that these constituencies are fully represented in all future sports facilities discussions, and to make sure that tremendous statewide events such as the Prep Bowl are not left out in the cold.

Roy Terwilliger
Chair, MSFC

William J. Lester
Executive Director

January 2005



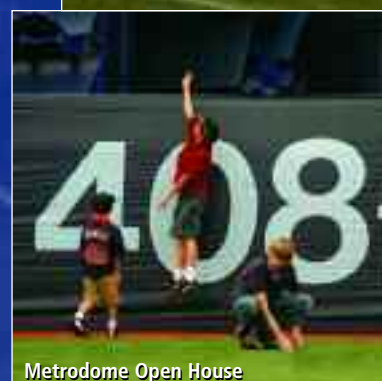
Boys High School Soccer Tournament



LRT/Plaza Reopening



Metrodome Touch Football



Metrodome Open House



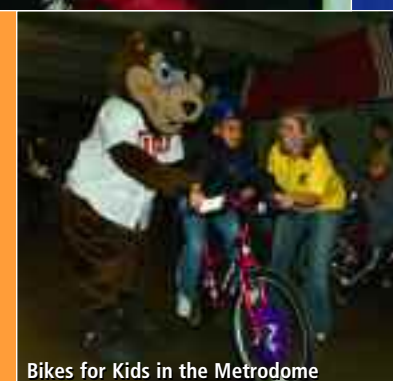
Model Airplane Flying



Breakfast on the Plaza



Metrodome Classic Softball Tournament



Bikes for Kids in the Metrodome

Constantly updating the stadium is central to our mission of protecting the public's investment in the Metrodome.

The MSFC will work to ensure that tremendous statewide events such as the Prep Bowl are not left out in the cold.



Bats, tackles, songs, and trucks all

part of the Metrodome mix in 2004



MDRA Running

Being the most versatile stadium in the world means there are very few days off in the Metrodome. On Jan. 1 2004, nearly 1,000 RollerDome inline skaters greeted the new year by skating through the Metrodome concourses — just the start of a robust, year-long, varied schedule of big games and exciting community events and activities.

The next day marked the opening of the **Home and Landscape Expo's** six-day run in the Metrodome. January also featured two exciting motor sports events, the **U.S. Grand Slam of Motorsports** and the **Super Snow Cross**, for which tons of snow were brought into the stadium.



Hmong American New Year Celebration

Bats and balls returned to the Metrodome in February with dozens of amateur and collegiate baseball games, the annual University of Minnesota Pro-Alumni baseball game and the annual **Metrodome Classic Softball Tournament**, hosted by the University's women's softball program. Other major events included the **THQ World Supercross** motor sport event, the three-day **Grain Belt Premium Golf Show**, and a party in conjunction with the National Hockey League All-Star game drawing more than 3,000 guests.



America's Walk for Diabetes

Amateur and collegiate baseball continued in March, highlighted by the Gophers' **Dairy Queen Classic** tournament, featuring some of the nation's highest ranked collegiate baseball teams. Motor sports — the **U.S. Hot Rod Monster Jam** — also filled the stadium once again. March also included an important event that didn't draw a crowd, when the Metrodome's aging turf was replaced by the most natural playing indoor turf, FieldTurf.

The turf was in place when the **Minnesota Twins** arrived to start the season in early April. The season opened with the annual **Breakfast on the Plaza**, and ended with the Twins winning their third consecutive American League Central title, and drawing nearly 2 million people along the way. Minnesota baseball fans witnessed the Cy Young Award-winning performances of Twins pitcher Johan Santana, and were once again treated to post-season baseball action as the Twins hosted the Yankees in the American League Division Series.



Girls High School Soccer Tournament

The **University of Minnesota Golden Gophers** football team also recorded another successful season in the Metrodome, winning five games while losing only once, mostly on the legs of record-setting running backs Marion Barber III and Laurence Maroney. The wins included a 45-0 drubbing of Illinois to celebrate Homecoming.

The **Minnesota Vikings** also started out hot, winning five of their first six games in the Metrodome. Daunte Culpepper continued to light up the stadium with epic performances, while Randy Moss made thrilling touchdown catches.

The Twins, Vikings and Gophers weren't the only teams to have great performances in the Metrodome in 2004. In November, high school football teams from Stephen-Argyle Central, Totino-Grace, Pierz, East Grand Forks, Minnetonka and Rushford-Peterson were all crowned 2004 state champions in the annual **Prep Bowl**, one of the Metrodome's best-loved events.

Soccer also took center stage at the Metrodome in 2004. In June, the A-League's **Minnesota Thunder** played two important matches in the Metrodome, including a thrilling victory over defending Major League Soccer champion L.A. Galaxy in the USA Cup. And in November, Mahtomedi and Woodbury won the girls divisions in the **2004 State Soccer Tournament**. Totino-Grace and Bloomington Jefferson took honors in the boys divisions.

The football and soccer tournaments were just part of a typically frantic Metrodome autumn. In the period from October 1, through December 31, the Metrodome hosted:

- Two Twins ALDS games
- America's Walk for Diabetes
- The Hmong American New Year celebration
- Six Minnesota Vikings NFL games
- Three Golden Gophers Big Ten football games
- Eighteen high school football state tournament games
- Eight high school boys soccer state tournament games
- Eight high school girls soccer state tournament games
- Four NCAA Division II football games featuring teams from the Northern Sun Intercollegiate Conference
- Six NCAA Division III football games featuring teams from the Upper Midwest Athletic Conference and the Minnesota Intercollegiate Athletic Conference
- Tzedakah Jewish Federation Bowl
- A full schedule of amateur football, running and inline skating
- Several sessions of model airplane flying, Metrodome Touch Football, marching band practices and paramilitary physical fitness training

In addition to all of this, in 2004, the Metrodome also hosted an open house in June to celebrate the opening of the Metrodome/Downtown East station of the new Hiawatha light-rail line; welcomed the **Vans Warped Tour**, an exciting music festival; and was the site of the opening ceremony for the **National Kidney Foundation 2004 Transplant Games**.

While it seems like an incredibly full and hectic schedule, 2004 was just another typical year at the Metrodome.



U.S. Grand Slam of Motorsports



TwinsFest



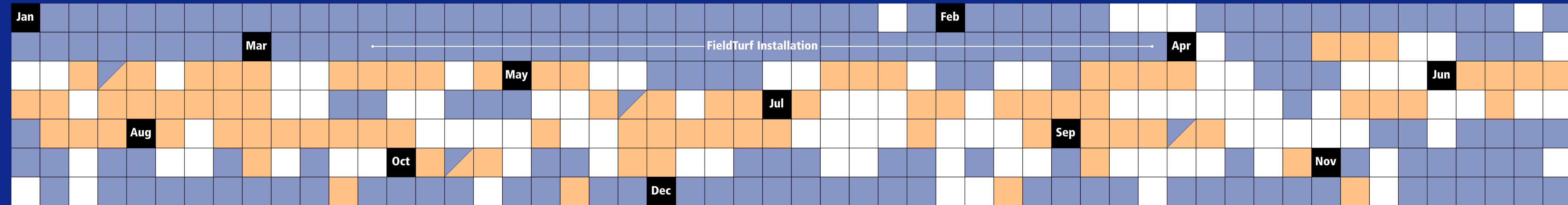
Boys High School Football



RollerDome



Out of more than 300 event days per year at the Metrodome, fewer than 100 feature professional or major college sports.



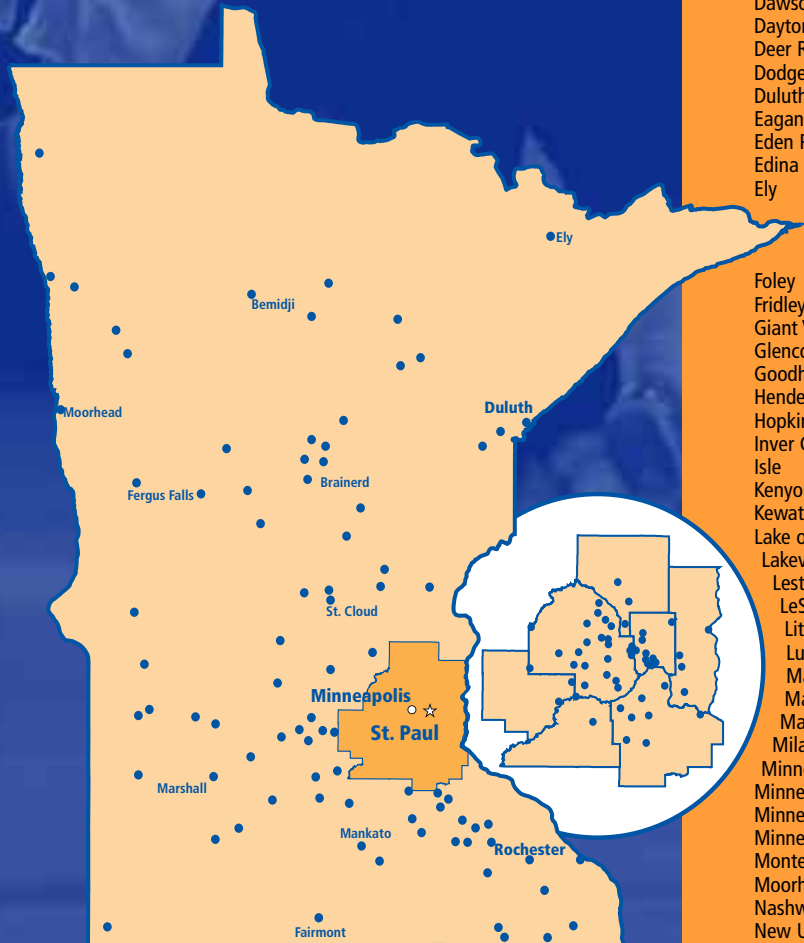
January	February	March	April	May	June	July	August	September	October	November	December
<ul style="list-style-type: none"> Rollerdome inline skating (17 sessions) Home and Landscape Expo (6 sessions) MDRA Running (8 sessions) U.S. Grand Slam of Motorsports TwinsFest (3 days) Super Snow Cross Stadium Tour 	<ul style="list-style-type: none"> Rollerdome inline skating (15 sessions) MDRA Running (8 sessions) Gopher Baseball Pro-Alumni Game Metrodome Classic Softball Tournament (4 days) THQ World Supercross The Grain Belt Premium Golf Show (3 days) 	<ul style="list-style-type: none"> Rollerdome inline skating (25 sessions) MDRA Running (4 sessions) Metrodome college baseball (6 days) University of Minnesota Dairy Queen Baseball Classic (3 days) Minnesota Gopher Baseball vs Mankato State FieldTurf installation The U.S. Hot Rod Monster Jam 	<ul style="list-style-type: none"> Twins vs Cleveland (3 games) Twins vs Kansas City (3 games) U of M Spring Football Game Twins vs Detroit (3 games) Minnesota Thunder vs Calgary Mustangs soccer Twins vs Toronto (3 games) 	<ul style="list-style-type: none"> Twins vs Anaheim (3 games) Twins vs Seattle (3 games) Twin Cities High School Baseball Championship Twins vs Chicago White Sox (4 games) Twins vs Tampa Bay (1 game) 	<ul style="list-style-type: none"> Twins vs Tampa Bay (3 games) Twins vs Detroit (3 games) Twins vs New York Mets (3 games) Twins vs Philadelphia (3 games) Twins vs Milwaukee (3 games) Twins vs Chicago White Sox (2 games) 	<ul style="list-style-type: none"> Twins vs Chicago White Sox (1 game) Twins vs Detroit (5 games) Minnesota Thunder vs L.A. Galaxy USA Cup Soccer Twins vs Tampa Bay (2 games) Vans Warped Tour 2004 Natl. Kidney Foundation 2004 Transplant Games Ceremony Opening of Metrodome Plaza and Metrodome/Downtown East LRT station Twins vs Boston (2 games) 	<ul style="list-style-type: none"> Twins vs Boston (1 game) Twins vs Anaheim (3 games) Twins vs Oakland (4 games) Preseason Vikings vs Arizona Twins vs New York Yankees (3 games) Twins vs Cleveland (3 games) Preseason Vikings vs San Francisco Twins vs Texas (1 game) 	<ul style="list-style-type: none"> Twins vs Texas (2 games) Twins vs Kansas City (3 games) Gopher Football vs Toledo Gopher Football vs Illinois State Vikings vs Dallas Twins vs Chicago White Sox (3 games) Twins vs Baltimore (3 games) Gopher Football vs Northwestern Vikings vs Chicago 	<ul style="list-style-type: none"> Twins vs Cleveland (3 games) Gopher Football vs Penn State American League Division Series Twins vs New York Yankees (2 games) Gopher Football Homecoming vs Illinois Vikings vs Tennessee Vikings vs New York Giants 	<ul style="list-style-type: none"> Minnesota State High School League Soccer (16 games) Rollerdome inline skating (7 sessions) NSIC College Football (4 games) MSHSSCA Soccer Games MIAC Football (1 game) UMAC College Football (5 games) America's Walk for Diabetes MDRA Running (4 sessions) Minnesota State High School League Football Semi-Finals and Prep Bowl (18 games) Vikings vs Detroit Vikings vs Jacksonville 	<ul style="list-style-type: none"> Rollerdome inline skating (13 sessions) MDRA Running (8 sessions) USHRA Monster Jam Vikings vs Seattle Hmong American New Year (2 days) Vikings vs Green Bay

- Pro sports events (Twins, Vikings, Thunder)
- Amateur and community events (including college sports)
- Days with both types of events
- Days with no events



Communities throughout Minnesota send their teams to the Metrodome

Minnesotans come from every corner of the state to watch games, concerts and other events at the Metrodome. But what's truly unique about Minnesota's stadium is that amateur teams also come from throughout Minnesota to compete on the Metrodome turf. This includes small college football, town-team baseball, recreational touch football and high school baseball and softball. And every high school football team and every boys and girls soccer team starts its season with the same goal — to make it to the Metrodome for the state tournaments.



These schools, communities and organizations sent athletic teams to the Metrodome in 2003-04 (partial list):

- | | | |
|-----------------|-------------------------------|---|
| Alden | Oakdale | Orono HS |
| Apple Valley | Olivia | Otter Tail Central HS |
| Appleton | Osseo | Park Center HS |
| Arden Hills | Owatonna | Park HS |
| Becker | Pierz | Pierz HS |
| Bird Island | Pine Island | Robbinsdale Armstrong HS |
| Blackduck | Plymouth | Rochester Lourdes HS |
| Bloomington | Prior Lake | Rochester Mayo HS |
| Boyd | Redwood Falls | Rushford-Peterson HS |
| Braham | Robbinsdale | Saint Cloud Cathedral HS |
| Brooklyn Center | Rosemount | Saint Paul Central HS |
| Brooklyn Park | Roseville | Sartell-Saint Stephen HS |
| Brownton | Sauk Rapids | Sauk Rapids-Rice HS |
| Buffalo | Shakopee | Shakopee HS |
| Burnsville | Sibley | Spring Grove HS |
| Cannon Falls | Silver Lake | St. Cloud Apollo HS |
| Carlton | Sleepy Eye | St. Paul Academy and Summit Schools |
| Cass Lake | St. Bonifacius | Stephen-Argyle Central HS |
| Champlin | St. Charles | Totino-Grace HS |
| Chanhasen | St. Paul | Verndale HS |
| Chaska | Stewartville | Wabasso HS |
| Cloquet | Stillwater | Waterville-Elysian-Morristown HS |
| Collegeville | Twin Valley | Wayzata HS |
| Conger | Wadena | White Bear Lake Area HS |
| Cottage Grove | Walker | Woodbury HS |
| Dawson | Wanamingo | Augsburg College |
| Dayton | Waseca | Bemidji State University |
| Deer River | Winona | Bethel University |
| Dodge Center | Woodbury | Carleton College |
| Duluth | Zumbrota | Concordia College |
| Eagan | Academy of Holy Angels | Concordia University |
| Eden Prairie | B O L D HS | Crown College |
| Edina | Becker HS | Dakota County Technical College |
| Ely | Benilde-St. Margaret's School | Fergus Falls Community College |
| | Bertha-Hewitt HS | Gustavus Adolphus College |
| | Bethlehem Academy | Hamline University |
| | Bloomington Jefferson HS | Inver Hills Community College |
| | Breck School | Macalester College |
| | Caledonia HS | Martin Luther College |
| | Champlin Park HS | Minnesota State University, Mankato |
| | Cooper HS | Minnesota State University Moorhead |
| | Cretin-Derham Hall HS | Northwestern College |
| | Crookston HS | Southwest Minnesota State University (Marshall) |
| | De La Salle HS | St. John's University |
| | Delano HS | St. Mary's University |
| | East Grand Forks HS | St. Olaf College |
| | Eden Prairie HS | University of Minnesota, Morris |
| | Eden Valley-Watkins HS | University of Minnesota, Duluth |
| | Isle | University of Minnesota, Crookston |
| | Kenyon | University of Minnesota (Twin Cities) |
| | Kewatin | University of St. Scholastica |
| | Lake of the Woods | University of St. Thomas |
| | Lakeville | WESAC (Minneapolis Park Board) |
| | Lester Prairie | Winona State University |
| | LeSueur | |
| | Litchfield | |
| | Luverne | |
| | Maple Grove | |
| | Marshall | |
| | Mazeppa | |
| | Milaca | |
| | Minneapolis | |
| | Minneapolis | |
| | Minneota | |
| | Minnetonka | |
| | Minnewaska | |
| | Montevideo | |
| | Moorhead | |
| | Nashwauk | |
| | New Ulm | |
| | Northfield | |
| | Norwood-Young America HS | |

MSFC members operated concessions stand during June 29 Twins game



MSFC Commissioners Dick Johnson, Jeff Seidel, Peggy Lucas and Loanne Thrane served food and beverages at a Twins - White Sox game in June.

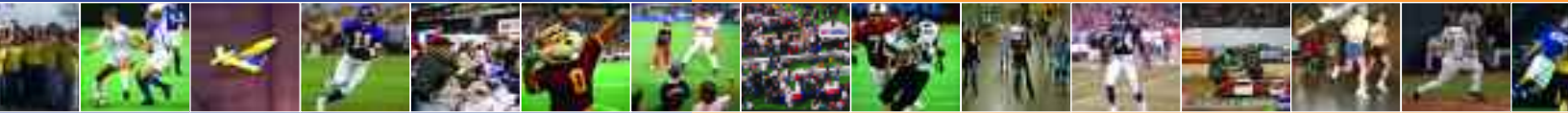
MSFC members exchanged the boardroom for the concessions stand for a Twins game in June. The Commissioners donned aprons and served the full range of Metrodome food and beverage as part of a tribute to the many volunteers from non-profit organizations that staffed the Metrodome concessions stands over the years. Volunteers provide outstanding service to Metrodome patrons over the years and have raised more than \$20 million for the organizations they represent. Some non-profit groups have earned as much as \$1 million over several years.

"This is one of the great untold stories of the Metrodome," said MSFC member Peggy Lucas. "Few people know that Metrodome events have been a vital source of revenue for church groups, senior organizations, and youth groups — just a wide range of important non-profit community organizations. These groups also provide tremendous customer service to Twins, Vikings and Gophers fans. It's truly one of those rare 'win-win' situations." Profits from the MSFC booth benefited the Carolyn Anderson Scholarship at the University of Minnesota. The scholarship is named for the former MSFC commissioner who passed away last year. Ms. Anderson was a long-time supporter of women's athletics in Minnesota.

Tour the Metrodome

Public walk-up and reserved group tours are available at the Metrodome. Reserved tours are by reservation only. The tour can be scheduled between 9:00 a.m. and 3:00 p.m., Monday through Saturday, all year. The cost is \$2 for each participant or a minimum of \$45 per group. Walk-up tours are scheduled on Wednesday, Thursday and Friday at 11:00 a.m. starting from Gate F. The cost is \$3 for each participant. Tours are not given when the Metrodome is in use for "day events". The tours are appropriate for all ages and last approximately 1 hour. For information or reservations call (612) 335-3309.





Metropolitan Sports Facilities Commission

Roy Terwilliger, Chair

William J. Lester, Executive Director

Richard Jefferson

Dan Kenney

Peggy Lucas

Loanne Thrane

Jeff Seidel

Ray Waldron

Metropolitan Sports Facilities Commission

900 South Fifth Street
Minneapolis, Minnesota 55415

General Information: 612-332-0386

TTY Relay Service: 1-800-627-3529

Email: matowin@msfc.com

Web site: www.msfc.com

About the Metrodome

Since 1982, the combined attendance at Metrodome events exceeds 60 million people. It is the only public stadium in the country that does not rely on a continuous tax subsidy. It is also the only stadium in the world to have hosted the NFL Super Bowl (1992), Major League Baseball's All-Star Game (1985) and two World Series (1987, 1991), and the Final Four of the NCAA Division I Men's Basketball Championship (1992, 2001).

The legislative charter that established the Metropolitan Sports Facilities Commission ensures that the Metrodome is a community facility, not the sole province of professional athletes. Out of more than 300 event days per year at the Metrodome, less than 100 feature professional or major college sports. The rest of the event days are used by high schools and colleges, and for community and cultural events.

About the Metropolitan Sports Facilities Commission

The Metropolitan Sports Facilities Commission (MSFC) is the owner and operator of the Hubert H. Humphrey Metrodome. The MSFC was established by legislative charter in 1977 and was responsible for the construction of the Metrodome. The very existence of the MSFC attests to the desire of various interests — urban and suburban and statewide, business, labor and the general public to find common ground and work together on issues related to stadium infrastructure in Minnesota.

The MSFC consists of seven members. Six are appointed by the Minneapolis City Council, and the chair is appointed by the Governor and must reside outside of Minneapolis. MSFC members have always represented a broad cross-section of the community.

Photos courtesy of Rick Orndorf, Paul DeMarchi, Minnesota Twins, Minnesota Vikings, University of Minnesota.