

The Minnesota Utility Data Book

**A Reference guide to Minnesota
electric and natural-gas utilities
1965-2002**



MINNESOTA
DEPARTMENT OF
COMMERCE

TABLE OF CONTENTS

	PAGE
INTRODUCTION	1
 SECTION I: ELECTRIC UTILITIES	
Overview	3
Introduction to Electric Tables	4
Table 1: Minnesota Historical Electric Consumption	6
Table 1A Electric Consumption for Investor-Owned Utilities	7
Table 1B Electric Consumption for Cooperative Utilities	8
Table 1C Electric Consumption for Municipal Utilities	9
Table 2: Number of Minnesota Electric Customers	10
Table 2A Number of Electric Customers for Investor-Owned Utilities.....	11
Table 2B Number of Electric Customers for Cooperative Utilities.....	12
Table 2C Number of Electric Customers for Municipal Utilities.....	13
Table 3: Minnesota Electric Sales Revenue	14
Table 3A Electric Sales Revenue for Investor-Owned Utilities	15
Table 3B Electric Sales Revenue for Cooperative Utilities	16
Table 3C Electric Sales Revenue for Municipal Utilities	17
Table 4: Minnesota Electric Consumption in 2002.....	18
Table 5: Number of Minnesota Electric Customers in 2002.....	26
Table 6: Minnesota Electric Sales Revenue in 2002.....	34
Table 7: Minnesota Residential Space Heating Customers in 2002	43
Table 8: Minnesota Electric Consumption by County in 2002	50
Table 9: Electric Generating Plants Serving Minnesota During Calendar Year 2002	52
Table 10: Net Generation and Fuel Consumption for Electric Generating Plants Producing Power for Minnesota During 2002	79
 SECTION II: NATURAL-GAS UTILITIES	
Overview	113
Introduction to Natural-Gas Tables	115
Table 11: Total Minnesota Historical Natural-Gas Consumption	116
Table 12: Number of Minnesota Natural-Gas Customers	118
Table 13: Minnesota Natural-Gas Consumption by Company in 2002	119
Table 14: Minnesota Natural-Gas Customers by Company in 2002	121
Table 15: Minnesota Natural-Gas Revenue in 2002	122

SECTION III: ATTACHMENTS

General Notes on Data125
Glossary of Terms and Abbreviations126

LIST OF CHARTS

PAGE

SECTION I: ELECTRIC UTILITIES

Figure 1: Minnesota Electricity Consumption Reported by Type of Utility3
Figure 2: Weather-Normalized Electric Use Per Residential Customer4

SECTION II: NATURAL-GAS UTILITIES

Figure 3: Natural-Gas Throughput Reported by Type of Utility.....113
Figure 4: Natural-Gas Throughput Reported by Investor-Owned Utilities.....114
Figure 5: Weather-Normalized Natural-Gas Use Per Residential Customer.....115

INTRODUCTION

The Minnesota Department of Commerce regulates the financial services industries and promotes and implements policies regarding energy and telecommunications. We work with other state agencies to provide education, information and programs to the public and work to enhance Minnesota's environment and quality of life. This report is one tool in that process.

The Minnesota Utility Data Book compiles information reported by electric and natural-gas utilities serving Minnesota. Most of Minnesota's energy use occurs through service provided by various investor-owned, cooperative and municipal and private utilities. To track energy trends, the Minnesota Department of Commerce uses data in its Regional Energy Information System (REIS), which contains information collected through Minnesota Rules parts 7610.0100 to 7610.1130.

The 2002 Minnesota Utility Data Book provides aggregate information reported by Minnesota utilities through 2002. It also provides data reported by individual companies for the year 2002.

The tables in this report may use certain assumptions that are not obvious to the reader. Where feasible, this report lists assumptions either at the bottom of relevant pages or in the General Notes on Data section.

Staff who prepared this report include Steve Loomis, Susan Medhaug, Judy Lewandowski and Jeanette Anani. If you have any questions about the report, please contact Susan Medhaug at 651/297-2103.

We hope *The 2002 Minnesota Utility Data Book* will promote discussion, inquiries and interest about energy consumed through Minnesota's natural-gas and electric utilities. To obtain additional copies or alternative formats (i.e., large print, Braille, cassette tape, CD-ROM) of this report, please see our website at <http://www.commerce.state.mn.us> or call our Energy Information Center at 651/296-5175. If you are outside the Twin Cities area, please dial 1-800-657-3710. Our TTY number is 651-297-3067. The Information Center may also be contacted through e-mail at: energy.info@state.mn.us.

SECTION I

ELECTRIC UTILITIES

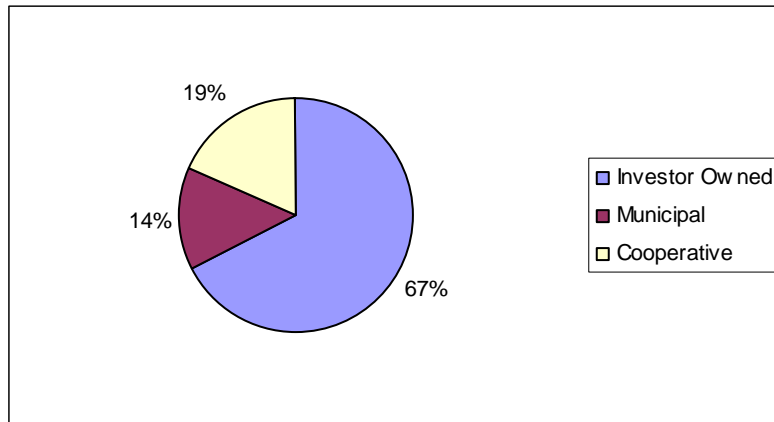
SECTION I: ELECTRIC UTILITIES

Overview

Minnesota's electric utilities are classified as investor-owned utilities (IOUs), cooperative utilities (co-ops), or municipal utilities (munis). The Minnesota Public Utilities Commission regulates the rates of all IOUs. Co-ops' and munis' rates are not regulated unless they choose such regulation. (Dakota Electric Association is the only utility that has chosen such regulation.)

As shown below, of the electricity sold to retail customers by electric utilities, most of Minnesota's electric consumers buy their electricity from IOUs. The remaining customers buy almost equally from co-ops and munis.

Figure 1: Minnesota Electric Consumption by Type of Utility



There are five investor-owned electric utilities serving customers in Minnesota. In 2002 there were five generation and transmission cooperatives, 46 distribution cooperatives and 126 municipal electric utilities serving customers in Minnesota.

Introduction to Electric Tables

The tables in this section provide both aggregate and individual company information reported by electric utilities serving Minnesota. Tables 1 through 3 provide overall electric consumption, numbers of electric customers and electric revenues in Minnesota. These tables also show this information for the general types of companies: investor-owned utilities, cooperative utilities, and municipal utilities.

According to Table 1, 2002 electric consumption in the residential sector was higher than 2001 consumption. As Figure 2 indicates, when adjusted for weather, electric consumption per residential customer, though fairly steady in recent years, is showing a distinct upward trend.

Figure 2: Weather-Normalized Electric Use Per Residential Customer

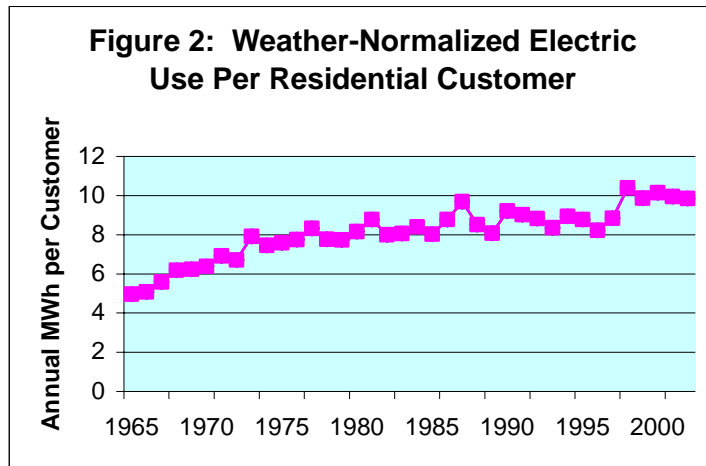


Table 4 through Table 7 provide 2002 electric consumption, numbers of electric customers, electric revenues, and data on residential space heating reported by each electric utility serving Minnesota. For companies that did not report data in 2002, the most recent data available was used.

Table 8 lists utility megawatt-hours sold at retail to Minnesota customers by county and provides each county's consumption and population rank (1 represents the highest total consumption/population and 87 represents the lowest).

Table 9 contains general descriptions of utility generation plants serving Minnesota during the 2002 calendar year;

Table 10 provides net generation and fuel consumption for plants producing energy during calendar year 2002 for the following utilities:

Aitkin Public Utilities	Madelia Municipal Light & Power
Alexandria Light & Power	Marshall Municipal Utilities
Alliant Energy-Interstate Power Co.	Melrose Public Utilities
Austin Utilities	Minnesota Power
Baudette, City of	Minnkota Power Cooperative
Benson Municipal Utilities	Moorhead Public Service
Blue Earth Light & Water	Moose Lake Water and Light
Dairyland Power Cooperative	New Ulm Public Utilities
Delano Municipal Utilities	Otter Tail Power Company
Detroit Lakes Public Utilities	Preston Public Utilities
Elk River Municipal Utilities	Princeton Public Utilities
Fairfax Public Utilities	Redwood Falls Public Utilities
Fairmont Public Utilities	Rochester Public Utilities
Glencoe Municipal Utilities	Roseau Municipal Water and Light
Grand Marais Utilities	Sleepy Eye Public Utilities
Granite Falls Municipal Utilities	Southern MN Municipal Power Agency
Great River Energy	Springfield Public Utilities
Halstad Municipal Utilities	Steele Waseca Cooperative Electric
Hastings, City of	Thief River Falls Municipal Utility
Hawley Public Utilities	Truman Municipal Utility
Hibbing Public Utilities	Two Harbors Water and Light
Hutchinson Utilities	Virginia Public Utilities
Janesville Municipal Utilities	Warren, City of
Kenyon Municipal Utilities	Wells Public Utilities
Lake Crystal Municipal Utilities	Willmar Municipal Utilities
Lakefield Public Utilities	Windom Municipal Utilities
Lanesboro Public Utilities	Xcel Energy
Litchfield Public Utilities	

TABLE 1

MINNESOTA HISTORICAL ELECTRIC CONSUMPTION (GIGAWATT-HOURS)

Total Electric Consumption for Minnesota

Year	Farm	Non-Farm Residential	Commercial	Industrial	Total
1965	1,526	4,036	2,552	4,804	12,917
1967	1,710	4,632	3,005	6,157	15,503
1969	1,949	5,588	3,603	8,027	19,166
1970	2,126	6,105	3,918	8,654	20,803
1971	2,250	6,381	4,185	9,201	22,017
1972	2,434	6,903	4,543	10,086	23,966
1973	2,472	7,029	4,781	11,309	25,591
1974	2,691	7,121	4,770	11,176	25,758
1975	2,891	7,651	5,028	11,281	26,852
1976	3,107	7,997	5,473	12,236	28,813
1977	3,452	7,855	5,524	12,562	29,393
1978	3,375	8,538	5,767	14,916	32,596
1979	3,527	8,777	6,004	16,217	34,524
1980	3,351	8,988	6,056	15,704	34,098
1981	3,294	8,910	6,094	16,142	34,439
1982	3,509	9,320	6,408	14,684	33,921
1983	3,447	9,676	6,599	16,046	35,769
1984	3,517	9,682	7,067	17,960	38,226
1985	3,502	9,908	7,290	17,886	38,586
1986	3,517	10,169	7,488	17,442	38,616
1987	3,397	10,490	7,863	18,919	40,669
1988	3,609	11,657	8,397	22,090	45,753
1989	3,689	11,265	9,293	22,619	46,866
1990	3,560	11,475	9,626	23,436	48,097
1991	3,380	12,436	9,048	23,951	48,815
1992	2,910	11,761	9,189	23,429	47,289
1993	2,962	12,583	9,270	24,288	49,104
1994	2,753	13,296	9,667	25,335	51,051
1995^	2,979	14,101	10,163	26,701	53,964
1996	3,148	14,152	10,883	27,046	55,229
1997	3,033	14,169	10,832	27,825	55,859
1998	2,911	14,584	11,098	28,382	56,975
1999	2,930	15,170	11,717	27,866	57,683
2000	2,956	15,738	12,224	29,043	59,962
2001**	2,995	16,446	20,675	20,396	60,511
2002	2,969	17,478	19,969	21,948	62,364

^ Note: For 1995, Barnesville Municipal Electric reported only total consumption, not consumption by class.

** Xcel redefined its commercial and industrial customer classifications in 2001. Commercial = Small Commercial and Industrial requiring less than 1000 kW, Industrial = Large Commercial and Industrial requiring at least 1000 kW.

TABLE 1A

MINNESOTA HISTORICAL ELECTRIC CONSUMPTION (GIGAWATT-HOURS)

Electric Consumption for Investor-Owned Utilities

Year	Farm	Non-Farm Residential	Commercial	Industrial	Total
1965	207	3,076	1,734	4,360	9,378
1967	224	3,521	2,049	5,660	11,455
1969	238	4,236	2,469	7,392	14,335
1970	248	4,606	2,679	7,896	15,429
1971	257	4,760	2,842	8,378	16,237
1972	272	5,123	3,041	9,184	17,620
1973	267	5,156	3,178	10,318	18,920
1974	276	5,176	3,168	10,170	18,789
1975	286	5,527	3,280	10,199	19,291
1976	294	5,709	3,548	11,046	20,597
1977	301	5,662	3,570	11,227	20,760
1978	298	5,881	3,726	13,487	23,391
1979	314	5,985	3,867	14,697	24,862
1980	317	6,085	3,961	14,120	24,482
1981	345	5,960	3,980	14,473	24,758
1982	361	6,208	4,244	12,915	23,728
1983	354	6,497	4,298	14,198	25,347
1984	358	6,464	4,550	16,053	27,425
1985	352	6,593	4,697	15,909	27,551
1986	350	6,777	4,804	15,298	27,229
1987	334	6,989	5,025	16,710	29,058
1988	347	7,786	5,365	19,664	33,162
1989	339	7,401	6,117	20,067	33,925
1990	344	7,445	6,257	20,818	34,864
1991	359	7,842	5,592	21,089	34,882
1992	116	7,442	5,712	20,425	33,695
1993	119	7,817	5,687	21,061	34,684
1994	77	8,065	5,952	21,886	35,981
1995	78	8,615	6,218	23,099	38,009
1996	78	8,520	6,811	23,231	38,640
1997	76	8,511	6,634	23,768	38,989
1998	74	8,764	6,699	23,993	39,531
1999	75	9,038	6,852	23,494	39,459
2000	74	9,372	7,279	24,270	40,995
2001*	76	9,654	15,516	15,598	40,843
2002	73	10,185	14,650	17,005	41,912

* Xcel Energy redefined its commercial and industrial customer classifications in 2001. Commercial = Small Commercial and Industrial requiring less than 1000 kW, Industrial = Large Commercial and Industrial requiring at least 1000 kW.

TABLE 1B

MINNESOTA HISTORICAL ELECTRIC CONSUMPTION (GIGAWATT-HOURS)

Electric Consumption for Cooperative Utilities

Year	Farm	Non-Farm Residential	Commercial	Industrial	Total
1965	1,306	201	150	57	1,714
1967	1,473	259	177	74	1,983
1969	1,696	363	210	149	2,417
1970	1,862	418	237	171	2,688
1971	1,976	490	264	200	2,930
1972	2,148	568	301	232	3,250
1973	2,191	635	325	293	3,443
1974	2,400	670	331	287	3,689
1975	2,590	759	363	338	4,049
1976	2,796	851	395	378	4,421
1977	3,134	722	402	437	4,694
1978	3,059	1,101	389	500	5,049
1979	3,193	1,203	400	563	5,359
1980	3,013	1,317	376	586	5,292
1981	2,927	1,384	392	629	5,332
1982	3,125	1,455	410	657	5,647
1983	3,070	1,474	498	625	5,667
1984	3,136	1,514	672	546	5,868
1985	3,129	1,588	713	556	5,986
1986	3,143	1,672	777	551	6,144
1987	3,040	1,723	844	588	6,196
1988	3,237	1,951	1,091	557	6,836
1989	3,326	1,951	1,173	587	7,036
1990	3,193	2,124	1,226	633	7,177
1991	3,002	2,577	1,298	712	7,590
1992	2,773	2,469	1,328	761	7,331
1993	2,807	2,810	1,419	823	7,859
1994	2,656	3,218	1,460	843	8,178
1995	2,879	3,350	1,609	898	8,736
1996	3,047	3,466	1,740	981	9,235
1997	2,936	3,502	1,821	1,062	9,320
1998	2,814	3,654	2,049	1,125	9,642
1999	2,832	3,896	2,280	1,119	10,127
2000	2,861	4,076	2,301	1,318	10,556
2001	2,900	4,391	2,432	1,346	11,069
2002	2,877	4,781	2,572	1,433	11,662

TABLE 1C

MINNESOTA HISTORICAL ELECTRIC CONSUMPTION (GIGAWATT-HOURS)

Electric Consumption for Municipal Utilities

Year	Farm	Non-Farm Residential	Commercial	Industrial	Total
1965	13	759	668	386	1,825
1967	13	852	778	423	2,065
1969	14	989	925	486	2,414
1970	15	1,081	1,003	586	2,685
1971	17	1,130	1,080	623	2,849
1972	14	1,212	1,201	670	3,097
1973	14	1,238	1,278	699	3,228
1974	15	1,275	1,271	719	3,280
1975	16	1,366	1,386	745	3,512
1976	17	1,437	1,530	812	3,796
1977	17	1,471	1,552	898	3,938
1978	19	1,556	1,652	930	4,157
1979	20	1,589	1,737	957	4,303
1980	21	1,586	1,719	998	4,324
1981	22	1,566	1,722	1,040	4,350
1982	23	1,658	1,754	1,113	4,547
1983	23	1,705	1,803	1,224	4,755
1984	23	1,704	1,845	1,361	4,932
1985	22	1,727	1,880	1,421	5,049
1986	23	1,719	1,907	1,593	5,243
1987	23	1,778	1,993	1,621	5,415
1988	24	1,920	1,941	1,869	5,755
1989	23	1,914	2,003	1,965	5,905
1990	23	1,906	2,143	1,984	6,056
1991	20	2,016	2,158	2,150	6,344
1992	21	1,850	2,148	2,244	6,263
1993	37	1,956	2,164	2,404	6,561
1994	20	2,013	2,254	2,606	6,893
1995	23	2,136	2,336	2,705	7,219 [^]
1996	22	2,166	2,331	2,834	7,353
1997	22	2,157	2,376	2,995	7,550
1998	22	2,165	2,349	3,265	7,802
1999	23	2,237	2,585	3,253	8,097
2000	21	2,291	2,644	3,455	8,410
2001	20	2,401	2,727	3,451	8,599
2002	20	2,513	2,747	3,509	8,789

[^] Note: For 1995, Barnesville Municipal Electric reported only total consumption, not consumption by class.

TABLE 2

NUMBER OF MINNESOTA ELECTRIC CUSTOMERS

Total Number of Electric Customers for All Minnesota Utilities

Year	Farm	Non-Farm Residential	Commercial	Industrial	Total
1965	182,634	907,946	126,583	6,296	1,223,459
1967	183,968	945,521	128,114	6,295	1,263,898
1969	188,194	994,230	128,791	6,390	1,317,605
1970	190,269	1,017,938	130,185	6,593	1,344,985
1971	193,405	1,041,982	132,487	6,592	1,374,466
1972	195,623	1,068,694	135,636	6,811	1,406,763
1973	199,334	1,100,014	137,467	6,711	1,443,526
1974	206,248	1,119,078	138,906	6,825	1,471,057
1975	210,508	1,143,377	140,298	7,050	1,501,234
1976	214,495	1,168,812	143,221	7,153	1,533,769
1977	245,769	1,165,178	152,962	7,286	1,571,195
1978	227,972	1,223,595	154,089	7,720	1,613,365
1979	223,361	1,265,978	157,247	7,630	1,654,216
1980	213,669	1,300,534	159,499	7,938	1,681,640
1981	214,173	1,323,682	162,882	8,280	1,709,017
1982	216,228	1,336,314	164,789	8,509	1,725,840
1983	217,479	1,361,892	168,586	8,316	1,756,273
1984	218,519	1,385,883	173,001	8,171	1,785,574
1985	217,688	1,402,671	175,653	8,243	1,804,255
1986	219,261	1,429,570	182,959	9,773	1,841,563
1987	220,058	1,469,279	183,175	8,778	1,881,290
1988	221,326	1,505,857	185,693	8,956	1,921,832
1989	227,254	1,520,556	186,773	9,337	1,943,922
1990	226,962	1,546,818	190,508	9,973	1,974,261
1991	192,976	1,591,515	197,845	9,400	1,991,736
1992	177,054	1,616,882	196,290	14,235	2,004,462
1993	170,848	1,650,291	198,256	14,073	2,033,464
1994	154,529	1,701,134	203,786	13,680	2,073,129
1995	165,961	1,732,544	210,695	10,016	2,119,216
1996	174,090	1,747,628	217,803	10,125	2,149,646
1997	173,001	1,788,247	217,731	10,949	2,189,927
1998	173,891	1,814,547	221,844	11,875	2,222,159
1999	169,327	1,853,118	230,521	12,479	2,265,444
2000	171,664	1,877,092	230,334	11,524	2,290,611
2001*	163,043	1,921,332	244,987	5,208	2,334,570
2002	160,310	1,966,536	250,730	5,311	2,382,887

* Xcel Energy redefined its commercial and industrial customer classifications in 2001. Commercial = Small Commercial and Industrial requiring less than 1000 kW, Industrial = Large Commercial and Industrial requiring at least 1000 kW.

TABLE 2A

NUMBER OF MINNESOTA ELECTRIC CUSTOMERS

Number of Electric Customers for Investor-Owned Utilities

Year	Farm	Non-Farm Residential	Commercial	Industrial	Total
1965	20,362	673,394	85,140	3,492	782,388
1967	19,682	699,106	84,826	3,650	807,264
1968	19,234	715,238	86,150	3,780	824,402
1970	17,976	746,802	87,137	3,953	855,868
1971	17,678	759,814	88,277	3,921	869,690
1972	17,432	774,108	89,236	3,999	884,775
1973	17,055	792,467	90,449	4,147	904,118
1974	16,814	806,962	91,462	4,112	919,350
1975	16,532	818,759	92,216	4,301	931,808
1976	16,226	832,472	93,619	4,213	946,530
1977	17,108	840,143	102,756	4,475	964,482
1978	16,287	860,957	104,535	4,619	986,398
1979	16,240	882,200	106,274	4,899	1,009,613
1980	16,283	897,461	108,124	5,074	1,026,942
1981	17,388	908,504	110,114	5,123	1,041,129
1982	17,318	915,153	111,468	5,219	1,049,158
1983	17,431	930,135	114,321	5,213	1,067,100
1984	17,223	946,476	116,833	5,347	1,085,879
1985	16,204	953,019	118,113	5,427	1,092,763
1986	16,169	972,878	120,116	5,799	1,114,962
1987	15,867	993,950	123,638	5,970	1,139,425
1988	15,928	1,018,232	125,431	6,239	1,165,830
1989	15,844	1,024,483	125,126	6,496	1,171,949
1990	15,793	1,037,478	128,479	6,911	1,188,661
1991	7,466	1,049,354	131,660	6,776	1,195,256
1992	5,749	1,068,031	128,506	10,701	1,212,987
1993	5,699	1,074,498	129,250	10,928	1,220,375
1994	5,943	1,089,167	132,515	11,034	1,238,659
1995	6,047	1,104,346	137,574	7,322	1,255,289
1996	6,021	1,112,703	141,579	7,353	1,267,656
1997	5,992	1,139,620	140,953	8,073	1,294,638
1998	6,058	1,151,585	143,660	8,529	1,309,832
1999	6,113	1,165,707	152,742	9,036	1,333,598
2000	5,758	1,178,863	145,286	8,122	1,338,029
2001*	6,018	1,195,910	157,203	1,780	1,360,911
2002	2,981	1,222,164	162,223	1,789	1,389,157

* Xcel Energy redefined its commercial and industrial customer classifications in 2001. Commercial = Small Commercial and Industrial requiring less than 1000 kW, Industrial = Large Commercial and Industrial requiring at least 1000 kW.

TABLE 2B

NUMBER OF MINNESOTA ELECTRIC CUSTOMERS

Number of Electric Customers for Cooperative Utilities

Year	Farm	Non-Farm Residential	Commercial	Industrial	Total
1965	159,424	73,667	14,403	497	247,991
1967	161,400	80,886	15,138	594	258,018
1969	166,741	91,890	14,218	704	273,553
1970	169,477	98,638	14,760	804	283,679
1971	172,487	106,291	15,319	861	294,958
1972	175,512	115,250	15,985	946	307,693
1973	179,475	123,780	16,516	1,011	320,782
1974	186,683	126,086	16,323	1,132	330,224
1975	191,235	132,547	17,274	1,239	342,295
1976	197,093	138,870	17,616	1,725	355,304
1977	227,390	122,558	17,846	1,427	369,221
1978	210,382	155,397	15,684	1,808	383,270
1979	205,797	170,926	16,793	1,566	395,082
1980	196,289	189,164	17,628	1,747	404,828
1981	195,677	198,501	18,147	1,988	414,313
1982	197,569	203,107	18,549	1,982	421,207
1983	198,731	210,087	19,367	1,690	429,875
1984	199,924	215,399	20,463	1,272	437,058
1985	200,170	223,644	21,607	1,256	446,677
1986	201,664	233,389	22,282	1,435	458,770
1987	202,725	244,405	23,306	1,219	471,655
1988	203,806	253,648	23,591	996	482,041
1989	209,822	259,124	24,233	1,046	494,225
1990	209,533	270,282	24,590	1,105	505,510
1991	184,694	299,541	28,816	951	514,002
1992	169,765	308,760	29,613	1,390	509,528
1993	161,521	335,390	30,426	1,247	528,584
1994	147,083	358,789	31,204	699	537,775
1995	158,373	371,121	33,094	723	563,311
1996	166,538	374,086	34,234	724	575,582
1997	165,478	385,524	36,117	774	587,893
1998	166,291	397,550	37,329	771	601,943
1999	161,526	418,559	36,443	805	617,333
2000	164,465	425,666	42,115	825	633,071
2001	155,624	446,451	44,393	732	647,200
2002	155,974	461,986	45,386	728	664,074

TABLE 2C

NUMBER OF MINNESOTA ELECTRIC CUSTOMERS

Number of Electric Customers for Municipal Utilities

Year	Farm	Non-Farm Residential	Commercial	Industrial	Total
1965	2,848	160,885	27,040	2,300	193,073
1967	2,886	165,529	28,149	2,044	198,608
1969	2,861	171,191	28,285	1,875	204,212
1970	2,816	172,498	28,287	1,829	205,430
1971	3,240	175,877	28,890	1,803	209,810
1972	2,679	179,336	30,414	1,859	214,287
1973	2,804	183,767	30,501	1,546	218,618
1974	2,751	186,030	31,120	1,574	221,475
1975	2,741	192,071	30,807	1,503	227,123
1976	1,176	197,470	31,985	1,208	231,927
1977	1,271	202,477	32,359	1,377	237,484
1978	1,303	207,241	33,869	1,286	243,689
1979	1,324	212,852	34,179	1,158	249,513
1980	1,097	213,909	33,746	1,111	249,863
1981	1,108	216,677	34,620	1,163	253,568
1982	1,341	218,054	34,771	1,301	255,467
1983	1,317	221,670	34,897	1,404	259,288
1984	1,372	224,008	35,704	1,543	262,627
1985	1,314	226,008	35,932	1,551	264,805
1986	1,428	223,303	40,560	2,530	267,821
1987	1,466	230,924	36,230	1,580	270,200
1988	1,592	233,977	36,670	1,712	273,951
1989	1,588	236,949	37,413	1,786	277,738
1990	1,636	239,058	37,438	1,948	280,080
1991	816	242,620	37,368	1,664	282,468
1992	1,540	240,091	38,168	2,137	281,937
1993	3,628	240,403	38,578	1,894	284,499
1994	1,503	253,178	40,067	1,943	296,691
1995	1,541	257,077	40,026	1,968	300,612
1996	1,531	260,839	41,990	2,048	306,408
1997	1,531	263,103	40,657	2,093	307,383
1998	1,542	265,412	40,853	2,567	310,374
1999	1,688	268,852	41,331	2,630	314,500
2000	1,441	272,563	42,933	2,577	319,511
2001	1,401	278,971	43,391	2,696	326,459
2002	1,355	282,386	43,121	2,794	329,656

TABLE 3

MINNESOTA ELECTRIC SALES REVENUE (\$1,000)

Total Electric Sales Revenue for Minnesota Utilities

Year	Farm	Non-Farm Residential	Commercial	Industrial	Total
1984	232,027	611,797	390,742	786,113	2,020,679
1985	236,127	631,401	409,851	791,767	2,069,146
1986	237,084	650,794	460,137	779,793	2,127,808
1987	235,338	683,285	454,258	846,161	2,219,041
1988	244,458	785,261	500,716	924,932	2,455,367
1989	246,765	754,543	533,586	926,797	2,461,692
1990	243,489	805,504	572,487	1,005,617	2,627,096
1991	229,340	860,661	548,827	1,019,014	2,657,842
1992	196,865	791,726	536,962	994,308	2,519,861
1993	190,991	892,646	566,233	1,069,229	2,719,098
1994	185,170	955,753	601,097	1,105,409	2,848,923
1995	197,573	1,030,079	634,946	1,153,268	3,015,867
1996	204,889	1,031,011	668,436	1,156,750	3,061,085
1997	199,101	1,046,107	676,971	1,207,639	3,129,818
1998	195,014	1,083,805	698,625	1,266,957	3,244,402
1999	195,866	1,141,166	737,432	1,275,500	3,349,963
2000	203,207	1,197,915	778,742	1,322,920	3,502,784
2001*	206,953	1,268,771	1,250,166	933,914	3,659,804
2002	215,701	1,315,785	1,186,304	922,033	3,639,822

* Xcel redefined its commercial and industrial customer classifications in 2001. Commercial = Small Commercial and Industrial requiring less than 1000 kW, Industrial = Large Commercial and Industrial requiring at least 1000 kW.

TABLE 3A

MINNESOTA ELECTRIC SALES REVENUE (\$1,000)

Electric Sales Revenue for Investor-Owned Utilities

Year	Farm	Non-Farm Residential	Commercial	Industrial	Total
1984	20,009	398,105	250,782	687,480	1,356,377
1985	20,727	407,556	257,782	690,248	1,376,313
1986	20,825	423,028	304,285	673,289	1,421,426
1987	19,660	442,578	286,873	740,501	1,489,613
1988	20,878	514,687	315,582	808,983	1,660,130
1989	19,912	480,220	337,250	801,167	1,638,549
1990	22,370	518,143	367,859	874,366	1,782,738
1991	23,072	533,082	337,806	874,923	1,768,884
1992	7,082	504,114	340,177	855,644	1,707,017
1993	7,311	558,342	353,902	915,252	1,834,806
1994	5,073	583,344	371,386	938,232	1,898,036
1995	5,200	641,934	393,842	982,290	2,023,264
1996	5,489	638,779	422,022	977,195	2,043,486
1997	5,645	653,611	423,229	1,022,192	2,104,678
1998	5,600	677,718	431,912	1,064,415	2,179,645
1999	5,528	707,299	445,387	1,074,562	2,232,775
2000	5,630	729,660	471,002	1,098,337	2,304,628
2001*	5,951	763,300	923,252	703,791	2,396,294
2002	5,995	770,046	846,702	687,852	2,310,596

* Xcel redefined its commercial and industrial customer classifications in 2001. Commercial = Small Commercial and Industrial requiring less than 1000 kW, Industrial = Large Commercial and Industrial requiring at least 1000 kW.

TABLE 3B

MINNESOTA ELECTRIC SALES REVENUE (\$1,000)

Electric Sales Revenue for Cooperative Utilities

Year	Farm	Non-Farm Residential	Commercial	Industrial	Total
1984	210,781	128,567	48,928	35,715	423,991
1985	213,724	131,323	52,551	34,480	432,078
1986	214,988	137,223	56,345	33,589	442,145
1987	214,416	144,954	62,458	33,937	455,765
1988	222,219	162,697	77,217	32,587	494,720
1989	225,500	164,166	81,842	33,791	505,299
1990	219,750	174,661	83,194	35,912	513,518
1991	205,144	208,957	88,184	40,079	542,364
1992	188,393	187,884	86,127	41,610	504,014
1993	181,233	221,491	90,721	44,875	538,320
1994	178,644	245,366	93,880	42,452	560,342
1995	190,740	253,351	100,634	43,430	588,154
1996	197,823	256,263	106,434	44,613	605,133
1997	191,918	255,834	110,557	46,797	605,106
1998	187,887	266,397	122,436	50,759	627,479
1999	188,579	288,666	137,147	48,039	662,432
2000	196,099	313,456	143,050	58,110	710,714
2001	199,569	340,202	154,074	59,160	753,006
2002	208,224	371,741	166,143	63,052	809,160

TABLE 3C

MINNESOTA ELECTRIC SALES REVENUE (\$1,000)

Electric Sales Revenue for Municipal Utilities

Year	Farm	Non-Farm Residential	Commercial	Industrial	Total
1984	1,236	85,125	91,032	62,918	240,311
1985	1,676	92,521	99,519	67,039	260,755
1986	1,271	90,542	99,508	72,915	264,236
1987	1,262	95,752	104,928	71,722	273,664
1988	1,360	107,877	107,917	83,363	300,518
1989	1,353	110,158	114,493	91,839	317,843
1990	1,369	112,699	121,433	95,338	330,840
1991	1,123	118,622	122,838	104,012	346,594
1992	1,390	99,728	110,658	97,054	308,830
1993	2,448	112,813	121,610	109,101	345,972
1994	1,453	127,043	135,832	124,726	390,545
1995	1,633	134,795	140,471	127,549	404,448
1996	1,577	135,969	139,980	134,942	412,467
1997	1,538	136,662	143,185	138,650	420,035
1998	1,527	139,690	144,278	151,783	437,277
1999	1,597	145,363	154,897	152,899	454,756
2000	1,479	154,799	164,690	166,473	487,441
2001	1,433	165,269	172,839	170,963	510,505
2002	1,482	173,997	173,459	171,128	520,066

TABLE 4

MINNESOTA ELECTRIC CONSUMPTION IN 2002 (MEGAWATT-HOURS)

Minnesota Electric Consumption for Investor-Owned Utilities

	Farm	Non-Farm Residential	Commercial	Industrial	Total
Investor-Owned Utilities					
Alliant Energy-Interstate Power Co	39,741	269,439	170,656	315,280	795,116
Minnesota Power	32,600	927,507	1,202,865	6,616,799	8,779,771
Northwestern Wisconsin Elec Co	172	148	185	0	505
Otter Tail Power Co	0	500,486	710,176	703,846	1,914,508
Xcel Energy	0	8,487,491	12,565,711	9,369,199	30,422,401
Total: Investor-Owned Utilities	72,513	10,185,071	14,649,593	17,005,124	41,912,301

TABLE 4 (Continued)

MINNESOTA ELECTRIC CONSUMPTION IN 2002 (MEGAWATT-HOURS)

Minnesota Electric Consumption for Cooperative Utilities

	Farm	Non-Farm Residential	Commercial	Industrial	Total
Dairyland Power Cooperative					
Heartland Power Cooperative	964	0	0	0	964
Freeborn Mower Coop Svcs	102,856	0	13,634	50,696	167,186
Peoples Coop Power Assoc., Inc.	48,769	142,386	24,846	0	216,001
Tri-Co Elec Coop	171,077	1,605	28,817	21,128	222,627
Total: Dairyland Power Coop	323,666	143,991	67,297	71,824	606,778
East River Electric Cooperative					
H-D Electric Coop, Inc.	153	0	6	0	159
Lyon-Lincoln Elec Coop	52,665	8,610	*	*	77,080
Renville Sibley Coop Power Assn	44,272	3,493	2,376	98,601	148,742
Traverse Elec Coop	27,920	0	*	*	39,370
Total: East River Electric Coop	125,010	12,103	23,210	105,028	265,351

* Withheld to avoid disclosure of individual company data. Data included in totals.

TABLE 4 (Continued)

MINNESOTA ELECTRIC CONSUMPTION IN 2002 (MEGAWATT-HOURS)

Minnesota Electric Consumption for Cooperative Utilities

	Farm	Non-Farm Residential	Commercial	Industrial	Total
Great River Energy					
Agralite Cooperative	76,584	0	15,366	44,357	136,307
Anoka Electric Coop	6,454	1,019,614	594,863	72,640	1,693,571
Arrowhead Electric Coop	0	34,186	23,076	0	57,262
BENCO Electric Coop	0	160,069	83,531	0	243,600
Brown Co Rural Elec Assn	65,109	1,493	15,264	32,302	114,168
Coop Lt&Pwr Assoc of Lake Co	0	40,981	*	*	79,547
Crow Wing Coop Pwr&Light	48,800	278,655	98,282	0	425,737
Dakota Electric Assn	5,061	834,273	309,077	478,464	1,626,875
East Central Energy	1,673	450,573	209,364	92,834	754,444
Federated Rural Elec Assn	83,205	4,669	32,853	2,624	123,351
Goodhue Co Coop Elec Assn	51,159	23,230	2,760	741	77,890
Head Of The Lakes Elec Coop	0	6,009	378	0	6,387
Itasca-Mantrap Coop Elec	15,861	65,095	*	*	174,652
Kandiyohi Power Coop	91,917	3,300	*	*	134,905
Lake Country Power	0	386,135	126,560	69,001	581,696
Lake Region Coop Elec Assc	122,703	136,766	*	*	313,436
McLeod Coop Power Assn	98,445	0	10,366	42,296	151,107
Meeker Coop Light&Power Assn	60,300	53,260	22,987	0	136,547
Mille Lacs Elec Coop	329	98,282	44,551	18,742	161,904
Minnesota Valley Elec Coop	0	297,565	193,386	0	490,951
Nobles Coop Electric	84,958	961	*	*	104,154
North Itasca Elec Coop	0	30,135	*	*	39,408
Redwood Elec Coop	44,032	3,652	5,614	0	53,298
Runestone Elec Assn	68,512	77,737	19,197	9,570	175,016
South Central Elec Assn	68,748	0	9,782	54,185	132,715
Stearns Coop Elec Assn	128,500	160,088	49,075	14,839	352,502
Steele Waseca Coop Elec	103,450	1,849	32,355	54,104	191,758
Todd Wadena Elec Coop	112,095	1,143	22,316	5,013	140,567
Wright Hennepin Coop Elec Assn	50,056	351,434	207,546	66,091	675,127
Total: Great River Energy	1,387,951	4,521,154	2,272,795	1,166,982	9,348,882

* Withheld to avoid disclosure of individual company data. Data included in totals.

TABLE 4 (Continued)

MINNESOTA ELECTRIC CONSUMPTION IN 2002 (MEGAWATT-HOURS)
--

Minnesota Electric Consumption for Cooperative Utilities

	Farm	Non-Farm Residential	Commercial	Industrial	Total
Minnkota Power Cooperative - Cooperative					
Beltrami Elec Coop	270,087	4,325	63,160	0	337,572
Clearwater-Polk Elec Coop	0	61,485	8,237	0	69,722
North Star Elec Coop	78,204	2,415	32,350	0	112,969
PKM Electric Cooperative, Inc	70,450	0	17,340	0	87,790
Red Lake Elec Coop	95,202	0	*	*	117,404
Red River Valley Coop Power	94,185	0	23,066	0	117,251
Roseau Electric Coop	114,509	4,158	14,961	28,787	162,415
Wild Rice Elec Coop	164,140	11,660	*	*	206,100
Total: MPC - Cooperative	886,777	84,043	192,943	47,460	1,211,223
Other Cooperatives					
Iowa Lakes Electric Cooperative	292	0	62	0	354
Minnesota Valley Coop Lt&Pwr	99,543	10,642	10,389	20,356	140,930
Sioux Valley Southwestern	53,411	8,695	5,054	21,739	88,899
Total: Other Cooperatives	153,246	19,337	15,505	42,095	230,183
Total: Cooperatives	2,876,650	4,780,628	2,571,750	1,433,389	11,662,417

* Withheld to avoid disclosure of individual company data. Data included in totals.

TABLE 4 (Continued)

MINNESOTA ELECTRIC CONSUMPTION IN 2002 (MEGAWATT-HOURS)

Minnesota Electric Consumption for Municipal Utilities

	Farm	Non-Farm Residential	Commercial	Industrial	Total
Minnkota Power Cooperative - Municipality					
Bagley Pub Utility	0	7,000	5,792	13,374	26,166
Baudette City Of	0	5,188	*	*	23,227
Fosston Municipal Utility	0	10,663	*	*	32,511
Halstad Mun Utilities	0	4,754	4,484	0	9,238
Hawley Pub Utilities	0	9,473	8,652	0	18,125
Roseau Mun Water&Light	0	18,139	23,532	0	41,671
Stephen Electric Dept	0	4,238	5,665	0	9,903
Thief River Falls Mun Util	0	43,208	51,284	36,441	130,933
Warren City Of	0	8,178	9,792	0	17,970
Warroad Mun Light & Power	0	8,587	13,993	32,549	55,129
Total: MPC-Municipal	0	119,428	149,869	95,576	364,873
Other Municipals (Non-SMMPA)					
Ada Water & Light Dept	0	11,670	9,744	185	21,599
Adrian Public Utilities	*	6,648	*	838	12,797
Aitkin Pub Utilities	0	13,294	8,167	15,456	36,917
Alexandria Light & Power	0	64,253	59,958	114,493	238,704
Alpha City of	*	773	*	0	1,440
Alvarado Electric Dept	0	2,203	1,161	0	3,364
Anoka City Of	0	76,131	81,420	104,955	262,506
Arlington City Of	0	7,758	9,228	0	16,986
Barnesville Mun Elec	0	12,554	5,230	0	17,784
Benson Municipal Utilities	*	13,863	*	11,950	32,379
Bigelow City of**	102	740	511	0	1,353
Biwabik Water Light&Power	0	3,772	3,891	0	7,663
Blue Earth Light&Water	0	13,978	6,726	33,989	54,693
Brainerd Public Utilities	0	45,661	71,250	57,184	174,095
Breckenridge Pub Utilities	0	17,111	10,027	10,910	38,048
Brewster Elec Light&Power	36	2,089	719	899	3,743
Brownnton Mun Light&Power	0	3,476	1,266	250	4,992
Buffalo City Of	28	31,797	49,141	15,148	96,114
Buhl Pub Utilities	0	3,693	2,624	0	6,317
Caledonia Mun Light&Power	87	9,924	4,456	9,462	23,929
Ceylon Public Utilities	0	1,749	823	0	2,572
City of Chaska-Utility Dept.	0	61,046	15,491	172,154	248,691
Darwin Electric Dept	0	1,455	532	0	1,987
Delano Mun Utilities	0	13,963	4,872	25,418	44,253
Detroit Lakes Pub Utilities	0	52,496	28,337	72,591	153,424

* Withheld to avoid disclosure of individual company data. Data included in totals.

** Data is from 1997. Utility has not provided updated information.

TABLE 4 (Continued)

MINNESOTA ELECTRIC CONSUMPTION IN 2002 (MEGAWATT-HOURS)

Minnesota Electric Consumption for Municipal Utilities

	Farm	Non-Farm Residential	Commercial	Industrial	Total
Other Municipals (Non-SMMPA, continued)					
Dundee Electric Utility	*	485	*	0	840
Dunnell Electric Department	0	672	856	0	1,528
East Grand Forks Water&Light	0	33,975	33,345	59,630	126,950
Eitzen Public Utilities	0	1,181	507	341	2,029
Elbow Lake Mun Elec	0	5,846	9,509	0	15,355
Elk River Mun Utilities	0	56,857	18,224	63,392	138,473
Ely Water & Light Dept	0	10,000	16,000	0	26,000
Fairfax Public Utilities	65	6,401	3,806	2,112	12,384
Gilbert Water&Light	0	5,575	4,569	0	10,144
Glencoe Mun Utilities	0	22,210	29,429	25,647	77,286
Grand Rapids Pub Utilities	0	43,022	87,191	20,466	150,679
Granite Falls Municipal Utilities	40	12,601	15,113	540	28,294
Grove City Electric Dept	547	3,606	3,880	0	8,033
Harmony Electric Dept	0	4,613	4,685	52	9,350
Henning Electric Dept	0	3,822	4,865	0	8,687
Hibbing Public Utilities	0	49,345	70,481	5,847	125,673
Hutchinson Utilities	0	49,819	96,482	150,706	297,007
Jackson Elec Light&Power	0	13,720	5,902	23,114	42,736
Janesville Mun Utilities	0	7,199	4,009	0	11,208
Kandiyohi Municipal Utilities**	0	2,546	1,254	0	3,800
Kasota Elec Light	0	3,700	0	0	3,700
Kasson City Of	0	15,890	11,846	0	27,736
Keewatin Public Utilities	0	5,476	520	0	5,996
Kenyon Mun Utilities	0	6,385	5,713	3,563	15,661
Lake Crystal Mun	171	8,214	7,246	0	15,631
Lake Park Pub Utilities	0	3,563	3,217	0	6,780
Lakefield Pub Utilities	0	7,000	5,700	0	12,700
Lanesboro Pub Utilities	0	2,793	3,242	0	6,035
Le Sueur Mun Utilities	2,375	12,608	11,151	78,344	104,478
Luverne Public Utilities	0	22,834	9,343	39,287	71,464
Mabel City of	0	2,389	2,702	0	5,091
Madelia Municipal Light & Power	0	7,820	9,859	9,463	27,142
Madison Mun Utilities	0	8,746	8,003	1,994	18,743
Marshall Municipal Utilities	0	55,700	31,519	465,039	552,258
Melrose Public Utilities	2,441	17,392	21,108	66,454	107,395
Moorhead Pub Service	0	139,556	38,785	180,729	359,070
Moose Lake Water&Light	0	5,024	12,004	10,050	27,078
Mountain Iron Water&Light	0	6,571	6,150	1,255	13,976
Mountain Lake Mun Utilities	0	8,166	3,886	8,513	20,565

* Withheld to avoid disclosure of individual company data. Data included in totals.

** Data is from 1997. Utility has not provided more recent information.

TABLE 4 (Continued)

MINNESOTA ELECTRIC CONSUMPTION IN 2002 (MEGAWATT-HOURS)

Minnesota Electric Consumption for Municipal Utilities

	Farm	Non-Farm Residential	Commercial	Industrial	Total
Other Municipals (Non-SMMPA, Continued)					
Nashwauk Pub Utilities	0	3,275	3,967	0	7,242
New Ulm Pub Utilities	0	46,662	71,935	77,620	196,217
Newfolden Electric	0	2,002	2,187	0	4,189
Nielsville Vlg Light System	0	579	86	0	665
North St Paul City Of	0	43,559	35,628	0	79,187
Olivia City Of	0	12,057	6,722	9,720	28,499
Ortonville City Of	89	11,866	13,785	0	25,740
Peterson Public Utilities	0	1,320	0	0	1,320
Pierz Utilities	0	3,646	5,606	109	9,361
Proctor Pub Utilities	0	12,103	*	*	23,252
Randall City of	0	2,774	*	*	4,754
Round Lake Electric Dept	0	1,826	941	4,954	7,721
Rushford City of	0	6,780	3,373	5,302	15,455
Rushmore City of	0	1,810	345	0	2,155
Sauk Centre Public Utilities	0	17,600	11,780	23,886	53,266
Shakopee Public Utilities	1,105	93,336	7,055	195,413	296,909
Shelly Municipal Light Dept.	0	1,637	676	0	2,313
Sleepy Eye Pub Utilities	0	13,411	12,020	16,894	42,325
Spring Grove Municipal Electric	248	4,256	3,890	6,207	14,601
Springfield Pub Utilities	0	9,176	6,151	11,889	27,216
St Charles Light&Water	0	11,326	4,816	9,779	25,921
St. James City of	65	18,351	*	*	66,690
Staples City of	0	9,760	5,899	5,559	21,218
Truman Municipal Utility	765	5,832	6,964	0	13,561
Two Harbors Water&Light	0	10,051	18,230	231	28,512
Tyler Mun Light&Power	580	5,942	4,140	0	10,662
Virginia Pub Utilities	0	34,595	67,511	0	102,106
Wadena Light & Water	0	21,341	7,716	35,928	64,985
Westbrook Mun Light&Power	253	4,168	3,012	320	7,753
Whalan City of**	0	203	173	0	376
Willmar Mun Utilities	0	65,122	82,498	113,647	261,267
Windom Municipal Utilities	0	20,614	16,636	27,270	64,520
Winthrop City Of	307	5,221	*	*	14,716
Worthington Mun Power	0	34,499	65,716	75,210	175,425
Total: Non-SMMPA Mun.	9,379	1,682,119	1,501,349	2,511,558	5,704,404

* Withheld to avoid disclosure of individual company data. Data included in totals.

** Data is from 1998. Utility has not provided updated information.

TABLE 4 (Continued)

MINNESOTA ELECTRIC CONSUMPTION IN 2002 (MEGAWATT-HOURS)
--

Minnesota Electric Consumption for Municipal Utilities

	Farm	Non-Farm Residential	Commercial	Industrial	Total
Southern Minnesota Municipal Power Agency					
Austin Utilities	6,123	72,516	*	*	310,059
Blooming Prairie Utilities	0	6,607	14,883	0	21,490
Fairmont Pub Utilities	3,737	38,355	50,475	70,612	163,179
Grand Marais Utilities	0	7,275	13,444	0	20,719
Lake City Utility Board	49	18,913	16,859	82,534	118,355
Litchfield Pub Utilities	290	33,403	32,767	51,514	117,974
Mora Mun Elec Utility	465	10,947	19,995	17,962	49,369
New Prague Mun Utilities	0	15,511	26,282	14,946	56,739
North Branch Mun Water&Light	0	10,233	12,250	4,139	26,622
Owatonna Public Utilities	0	72,395	63,333	208,520	344,248
Preston Public Utilities	105	5,238	*	*	12,533
Princeton Pub Utilities	0	15,047	8,418	22,256	45,721
Redwood Falls Pub Utilities	0	31,000	18,000	25,000	74,000
Rochester Pub Utilities	0	302,755	627,873	243,121	1,173,749
Spring Valley Pub Utility	0	8,692	9,294	0	17,986
St Peter Mun Utilities	0	24,686	32,420	20,666	77,772
Waseca Utility	0	29,175	11,699	23,930	64,804
Wells Public Utilities	0	8,490	16,376	0	24,866
Total: SMMPA	10,769	711,238	1,096,171	902,007	2,720,185
Total: Municipal Utilities	20,148	2,512,785	2,747,389	3,509,141	8,789,463
Total: Minnesota	2,969,311	17,478,484	19,968,732	21,947,654	62,364,181

* Withheld to avoid disclosure of individual company data. Data included in totals.

TABLE 5

NUMBER OF MINNESOTA ELECTRIC CUSTOMERS IN 2002

Number of Minnesota Electric Customers for Investor-Owned Utilities

	Farm	Non-Farm Residential	Commercial	Industrial	Total
Investor-Owned Utilities					
Alliant Energy-Interstate Power Co	1,802	34,096	6,918	246	43,062
Minnesota Power	1,153	111,558	19,951	480	133,142
Northwestern Wisconsin Elec Co	26	44	28	0	98
Otter Tail Power Co	0	46,832	11,524	461	58,817
Xcel Energy	0	1,029,634	123,802	602	1,154,038
Total: Investor-Owned Utilities	2,981	1,222,164	162,223	1,789	1,389,157

TABLE 5 (Continued)

NUMBER OF MINNESOTA ELECTRIC CUSTOMERS IN 2002

Number of Minnesota Electric Customers for Cooperative Utilities

	Farm	Non-Farm Residential	Commercial	Industrial	Total
Dairyland Power Cooperative					
Heartland Power Cooperative	38	0	0	0	38
Freeborn Mower Coop Svcs	5,700	0	54	9	5,763
Peoples Coop Power Assoc., Inc.	3,609	10,543	238	0	14,390
Tri-Co Elec Coop	10,044	1,757	349	2	12,152
Total: DPC	19,391	12,300	641	11	32,343
East River Electric Cooperative					
H-D Electric Coop, Inc.	9	0	3	0	12
Lyon-Lincoln Elec Coop	3,083	526	250	1	3,860
Renville Sibley Coop Power Assn	1,690	191	54	6	1,941
Traverse Elec Coop	1,307	0	388	1	1,696
Total: East River Electric Coop	6,089	717	695	8	7,509

TABLE 5 (Continued)

NUMBER OF MINNESOTA ELECTRIC CUSTOMERS IN 2002

Number of Minnesota Electric Customers for Cooperative Utilities

	Farm	Non-Farm Residential	Commercial	Industrial	Total
Great River Energy					
Agralite Cooperative	4,342	0	551	39	4,932
Anoka Electric Coop	296	98,330	6,891	11	105,528
Arrowhead Electric Coop	0	3,258	406	0	3,664
BENCO Electric Coop	5,746	5,518	581	0	11,845
Brown Co Rural Elec Assn	3,071	114	417	53	3,655
Coop Lt & Pwr Assoc of Lake Co	0	4,689	520	1	5,210
Crow Wing Coop Pwr & Light	1,220	33,677	1,355	0	36,252
Dakota Electric Assn	320	84,325	5,301	321	90,267
East Central Energy	95	42,931	2,970	18	46,014
Federated Rural Elec Assn	3,836	665	347	2	4,850
Goodhue Co Coop Elec Assn	2,289	1,928	145	6	4,368
Head Of The Lakes Elec Coop	0	779	22	0	801
Itasca-Mantrap Coop Elec	958	4,119	4,719	1	9,797
Kandiyohi Power Coop	5,392	1,171	860	1	7,424
Lake Country Power	0	42,711	2,554	2	45,267
Lake Region Coop Elec Assc*	6,833	14,850	1,796	1	23,480
McLeod Coop Power Assn	5,784	0	262	5	6,051
Meeker Coop Light&Power Assn	2,828	4,527	437	0	7,792
Mille Lacs Elec Coop	20	12,608	947	48	13,623
Minnesota Valley Elec Coop	0	24,493	2,500	0	26,993
Nobles Coop Electric	4,226	460	235	1	4,922
North Itasca Elec Coop	0	4,610	287	1	4,898
Redwood Elec Coop	2,040	255	152	0	2,447
Runestone Elec Assn	4,110	7,474	569	4	12,157
South Central Elec Assn	3,498	0	222	71	3,791
Stearns Coop Elec Assn	4,570	14,318	1,149	2	20,039
Steele Waseca Coop Elec	7,018	593	434	5	8,050
Todd Wadena Elec Coop	6,886	444	244	2	7,576
Wright Hennepin Coop Elec Assn	2,956	28,881	3,116	8	34,961
Total: Great River Energy	78,334	437,728	39,989	603	556,654

*2002 Data not provided. Data is from 2001.

TABLE 5 (Continued)

NUMBER OF MINNESOTA ELECTRIC CUSTOMERS IN 2002

Number of Minnesota Electric Customers for Cooperative Utilities

	Farm	Non-Farm Residential	Commercial	Industrial	Total
Minnkota Power Cooperative - Cooperative					
Beltrami Elec Coop	14,953	1,698	1,065	0	17,716
Clearwater-Polk Elec Coop	0	3,805	254	0	4,059
North Star Elec Coop	4,152	1,486	524	0	6,162
PKM Electric Cooperative, Inc	3,367	0	240	0	3,607
Red Lake Elec Coop	4,564	0	282	50	4,896
Red River Valley Coop Power	4,140	0	451	0	4,591
Roseau Electric Coop	5,412	313	268	2	5,995
Wild Rice Elec Coop*	8,999	2,832	651	1	12,483
Total: MPC - Cooperative	45,587	10,134	3,735	53	59,509
Other Cooperatives					
Iowa Lakes Electric Cooperative	17	0	2	0	19
Minnesota Valley Coop Lt&Pwr	4,234	757	232	2	5,225
Sioux Valley Southwestern	2,322	350	92	51	2,815
Total: Other Cooperatives	6,573	1,107	326	53	8,059
Total: Cooperatives	155,974	461,986	45,386	728	664,074

*2002 Data not provided. Data is from 2001.

TABLE 5 (Continued)

NUMBER OF MINNESOTA ELECTRIC CUSTOMERS IN 2002

Number of Minnesota Electric Customers for Municipal Utilities

	Farm	Non-Farm Residential	Commercial	Industrial	Total
Minnkota Power Cooperative - Municipality					
Bagley Pub Utility	0	529	146	59	734
Baudette City Of	0	516	156	1	673
Fosston Municipal Utility	0	655	211	7	873
Halstad Mun Utilities	0	271	67	0	338
Hawley Pub Utilities	0	794	167	0	961
Roseau Mun Water&Light	0	1,134	266	0	1,400
Stephen Electric Dept	0	300	98	0	398
Thief River Falls Mun Util	0	3,640	617	28	4,285
Warren City Of	0	668	145	0	813
Warroad Mun Light & Power	0	735	127	15	877
Total: MPC-Municipal	0	9,242	2,000	110	11,352
Other Municipals (Non-SMMPA)					
Ada Water & Light Dept	0	889	198	3	1,090
Adrian Public Utilities	1	518	89	2	610
Aitkin Pub Utilities*	0	1,408	295	51	1,754
Alexandria Light & Power	0	6,921	1,508	72	8,501
Alpha City of	1	65	14	0	80
Alvarado Electric Dept	0	190	33	0	223
Anoka City Of	0	9,969	1,220	18	11,207
Arlington City Of	0	882	133	0	1,015
Barnesville Mun Elec	0	997	127	0	1,124
Benson Municipal Utilities	1	1,507	231	47	1,786
Bigelow City of**	6	105	30	0	141
Biwabik Water Light&Power	0	693	93	0	786
Blue Earth Light&Water	0	1,669	335	59	2,063
Brainerd Public Utilities	0	5,658	1,451	26	7,135
Breckenridge Pub Utilities	0	1,540	274	21	1,835
Brewster Elec Light&Power	4	218	34	2	258
Brownnton Mun Light&Power	0	343	50	5	398
Buffalo City Of	3	3,920	506	12	4,441
Buhl Pub Utilities	0	447	39	0	486
Caledonia Mun Light&Power	8	1,314	185	70	1,577
Ceylon Public Utilities	0	199	50	0	249
City of Chaska-Utility Dept.	0	6,590	533	226	7,349
Darwin Electric Dept*	0	150	21	0	171
Delano Mun Utilities	0	1,528	245	63	1,836
Detroit Lakes Pub Utilities	0	4,731	988	106	5,825

* 2002 Data not provided. Data is from 2001.

** Data is from 1997. Utility has not provided updated information.

TABLE 5 (Continued)

NUMBER OF MINNESOTA ELECTRIC CUSTOMERS IN 2002

Number of Minnesota Electric Customers for Municipal Utilities

	Farm	Non-Farm Residential	Commercial	Industrial	Total
Other Municipals (Non-SMMPA, continued)					
Dundee Electric Utility	1	50	17	0	68
Dunnell Electric Department	0	93	28	0	121
East Grand Forks Water&Light	0	3,236	496	11	3,743
Eitzen Public Utilities	0	122	24	4	150
Elbow Lake Mun Elec	0	670	108	0	778
Elk River Mun Utilities*	0	6,036	772	216	7,024
Ely Water & Light Dept	0	1,940	311	0	2,251
Fairfax Public Utilities	6	581	122	7	716
Gilbert Water&Light	0	886	77	0	963
Glencoe Mun Utilities	0	2,352	371	2	2,725
Grand Rapids Pub Utilities	0	5,083	1,236	5	6,324
Granite Falls Municipal Utilities	2	1,404	307	5	1,718
Grove City Electric Dept	19	328	55	0	402
Harmony Electric Dept	0	584	169	9	762
Henning Electric Dept	0	404	107	0	511
Hibbing Public Utilities	0	6,165	855	10	7,030
Hutchinson Utilities	0	5,683	915	2	6,600
Jackson Elec Light&Power	0	1,372	270	43	1,685
Janesville Mun Utilities	0	925	132	0	1,057
Kandiyohi Municipal Utilities	0	220	40	0	260
Kasota Elec Light	0	370	0	0	370
Kasson City Of	0	1,931	250	0	2,181
Keewatin Public Utilities	0	542	12	0	554
Kenyon Mun Utilities	0	756	104	22	882
Lake Crystal Mun	18	995	175	0	1,188
Lake Park Pub Utilities	0	335	71	0	406
Lakefield Pub Utilities	0	794	142	0	936
Lanesboro Pub Utilities	0	475	82	0	557
Le Sueur Mun Utilities	178	1,591	229	54	2,052
Luverne Public Utilities	0	2,084	457	69	2,610
Mabel City of	0	386	92	0	478
Madelia Municipal Light & Power	0	982	204	9	1,195
Madison Mun Utilities	0	853	178	16	1,047
Marshall Municipal Utilities	0	5,236	860	89	6,185
Melrose Public Utilities	53	1,209	239	2	1,503
Moorhead Pub Service	0	12,073	1,563	184	13,820
Moose Lake Water&Light	0	701	223	2	926
Mountain Iron Water&Light	0	713	81	5	799
Mountain Lake Mun Utilities	0	884	152	11	1,047

* 2002 Data not provided. Data is from 2001.

TABLE 5 (Continued)

NUMBER OF MINNESOTA ELECTRIC CUSTOMERS IN 2002

Number of Minnesota Electric Customers for Municipal Utilities

	Farm	Non-Farm Residential	Commercial	Industrial	Total
Other Municipals (Non-SMMPA, Continued)					
Nashwauk Pub Utilities	0	452	57	0	509
New Ulm Pub Utilities	0	5,910	1,026	7	6,943
Newfolden Electric	0	156	30	0	186
Nielsville Vlg Light System	0	57	4	0	61
North St Paul City Of	0	5,588	520	0	6,108
Olivia City Of	0	1,090	180	60	1,330
Ortonville City Of	5	1,064	248	0	1,317
Peterson Public Utilities	0	115	0	0	115
Pierz Utilities	0	536	105	2	643
Proctor Pub Utilities	0	1,172	59	1	1,232
Randall City of	0	242	51	1	294
Round Lake Electric Dept	0	217	34	2	253
Rushford City Of	0	772	76	18	866
Rushmore City of	0	183	34	0	217
Sauk Centre Public Utilities	0	1,825	338	67	2,230
Shakopee Public Utilities	37	10,822	762	395	12,016
Shelly Municipal Light Dept.*	0	120	33	0	153
Sleepy Eye Pub Utilities	0	1,478	336	18	1,832
Spring Grove Municipal Electric	6	610	139	6	761
Springfield Pub Utilities	0	1,001	189	40	1,230
St Charles Light&Water	0	1,417	185	12	1,614
St. James City of	3	1,879	426	1	2,309
Staples City of	0	1,143	174	7	1,324
Truman Municipal Utility	6	506	103	0	615
Two Harbors Water&Light	0	1,600	241	2	1,843
Tyler Mun Light&Power	11	511	119	0	641
Virginia Pub Utilities	0	4,759	981	0	5,740
Wadena Light & Water	0	1,817	358	98	2,273
Westbrook Mun Light&Power	19	338	82	2	441
Whalan City of**	0	50	6	0	56
Willmar Mun Utilities	0	7,600	1,137	31	8,768
Windom Municipal Utilities	0	2,055	345	24	2,424
Winthrop City Of	12	661	133	1	807
Worthington Mun Power	0	4,357	798	5	5,160
Total: Non-SMMPA Municipals	400	185,598	29,517	2,360	217,875

*2002 data not received. Data is from 2001.

** Data is from 1998. Utility has not provided updated information.

TABLE 5 (Continued)

NUMBER OF MINNESOTA ELECTRIC CUSTOMERS IN 2002

Number of Minnesota Electric Customers for Municipal Utilities

	Farm	Non-Farm Residential	Commercial	Industrial	Total
Southern Minnesota Municipal Power Agency					
Austin Utilities	664	9,834	1,715	1	12,214
Blooming Prairie Utilities	0	810	187	0	997
Fairmont Pub Utilities	226	4,899	808	15	5,948
Grand Marais Utilities	0	858	286	0	1,144
Lake City Utility Board	2	2,535	348	6	2,891
Litchfield Pub Utilities	16	2,654	367	15	3,052
Mora Mun Elec Utility	42	1,500	404	4	1,950
New Prague Mun Utilities*	0	1,754	253	31	2,038
North Branch Mun Water&Light	0	1,480	219	7	1,706
Owatonna Public Utilities	0	9,419	891	63	10,373
Preston Public Utilities	5	657	150	13	825
Princeton Pub Utilities	0	1,937	309	31	2,277
Redwood Falls Pub Utilities	0	2,271	497	57	2,825
Rochester Pub Utilities	0	37,773	3,991	2	41,766
Spring Valley Pub Utility	0	1,261	188	0	1,449
St Peter Mun Utilities	0	3,260	396	2	3,658
Waseca Utility	0	3,504	398	77	3,979
Wells Public Utilities	0	1,140	197	0	1,337
Total: SMMPA	955	87,546	11,604	324	100,429
Total: Municipal Utilities	1,355	282,386	43,121	2,794	329,656
Total: Minnesota	160,310	1,966,536	250,730	5,311	2,382,887

*2002 data not received. Data is from 2001.

TABLE 6

MINNESOTA ELECTRIC SALES REVENUE IN 2002 (\$1,000)

Minnesota Electric Sales Revenue for Investor-Owned Utilities

	Farm	Non-Farm Residential	Commercial	Industrial	Total
Investor-Owned Utilities					
Alliant Energy-Interstate Power Co	3,501	24,623	12,664	18,681	59,469
Minnesota Power	2,478	61,304	70,167	236,430	370,378
Northwestern Wisconsin Elec Co	16	15	18	0	49
Otter Tail Power Co	0	32,582	40,773	31,025	104,381
Xcel Energy	0	651,522	723,080	401,717	1,776,319
Total: Investor-Owned Utilities	5,995	770,046	846,702	687,852	2,310,596

TABLE 6 (Continued)

MINNESOTA ELECTRIC SALES REVENUE IN 2002 (\$1,000)

Minnesota Electric Sales Revenue for Cooperative Utilities

	Farm	Non-Farm Residential	Commercial	Industrial	Total
Dairyland Power Cooperative					
Heartland Power Cooperative	75	0	0	0	75
Freeborn Mower Coop Svcs	8,485	0	917	1,824	11,226
Peoples Coop Power Assoc., Inc.	3,831	11,163	1,799	0	16,794
Tri-Co Elec Coop	14,597	262	2,016	751	17,626
Total: Dairyland Power Coop	26,988	11,425	4,732	2,576	45,720
East River Electric Cooperative					
H-D Electric Coop, Inc	14	0	1	0	15
Lyon-Lincoln Elec Coop	3,944	650	*	*	5,558
Renville Sibley Coop Power Assn	2,994	252	175	3,511	6,931
Traverse Elec Coop	2,105	0	*	*	2,798
Total: East River Electric Coop	9,056	901	1,539	3,807	15,302

* Withheld to avoid disclosure of individual company data. Data included in totals.

TABLE 6 (Continued)

MINNESOTA ELECTRIC SALES REVENUE IN 2002 (\$1,000)

Minnesota Electric Sales Revenue for Cooperative Utilities

	Farm	Non-Farm Residential	Commercial	Industrial	Total
Great River Energy					
Agralite Cooperative	5,948	0	1,309	2,074	9,330
Anoka Electric Coop	584	84,307	38,989	3,451	127,332
Arrowhead Electric Coop	0	2,761	1,604	0	4,365
BENCO Electric Coop	6,670	6,087	5,017	0	17,774
Brown Co Rural Elec Assn	4,255	103	902	1,640	6,900
Coop Lt&Pwr Assoc of Lake Co	0	3,216	*	*	5,322
Crow Wing Coop Pwr&Light	3,294	21,079	6,117	0	30,490
Dakota Electric Assn	394	63,727	21,821	20,445	106,386
East Central Energy	161	36,630	13,751	3,844	54,386
Federated Rural Elec Assn	5,009	314	1,766	172	7,262
Goodhue Co Coop Elec Assn	4,214	2,026	234	66	6,541
Head Of The Lakes Elec Coop	0	601	32	0	633
Itasca-Mantrap Coop Elec	1,195	4,436	*	*	11,051
Kandiyohi Power Coop	7,220	552	*	*	10,512
Lake Country Power	0	31,939	7,949	3,448	43,337
Lake Region Coop Elec Assc	9,121	10,865	*	*	23,757
McLeod Coop Power Assn	7,893	0	687	1,792	10,372
Meeker Coop Light&Power Assn	4,107	3,837	1,473	0	9,418
Mille Lacs Elec Coop	27	8,284	2,822	1,168	12,301
Minnesota Valley Elec Coop	0	23,920	10,634	0	34,554
Nobles Coop Electric	5,789	119	*	*	6,973
North Itasca Elec Coop	0	3,218	*	*	3,923
Redwood Elec Coop	3,574	230	456	0	4,261
Runestone Elec Assn	5,238	6,113	1,340	458	13,148
South Central Elec Assn	5,208	0	615	2,437	8,260
Stearns Coop Elec Assn	9,183	11,532	3,351	732	24,798
Steele Waseca Coop Elec	9,511	247	2,496	2,384	14,638
Todd Wadena Elec Coop	7,590	162	1,291	212	9,255
Wright Hennepin Coop Elec Assn	3,347	25,439	12,437	3,159	44,382
Total: Great River Energy	109,533	351,744	147,637	52,744	661,658

* Withheld to avoid disclosure of individual company data. Data included in totals.

TABLE 6 (Continued)

MINNESOTA ELECTRIC SALES REVENUE IN 2002 (\$1,000)

Minnesota Electric Sales Revenue for Cooperative Utilities

	Farm	Non-Farm Residential	Commercial	Industrial	Total
Minnkota Power Cooperative - Cooperative					
Beltrami Elec Coop	15,179	520	3,573	0	19,272
Clearwater-Polk Elec Coop	0	3,967	472	0	4,438
North Star Elec Coop	4,965	468	1,934	0	7,367
PKM Electric Cooperative, Inc	4,631	0	1,073	0	5,705
Red Lake Elec Coop	5,532	0	*	*	6,712
Red River Valley Coop Power	5,950	0	1,381	0	7,331
Roseau Electric Coop	6,348	280	841	1,083	8,552
Wild Rice Elec Coop**	9,470	1,098	*	*	12,155
Total: MPC - Cooperative	52,075	6,332	11,143	1,981	71,531
Other Cooperatives					
Iowa Lakes Electric Coop	24	0	4	0	28
Minnesota Valley Coop Lt&Pwr	6,789	726	741	813	9,069
Sioux Valley Southwestern	3,760	612	346	1,131	5,850
Total: Other Cooperatives	10,573	1,338	1,092	1,945	14,948
Total: Cooperatives	208,224	371,741	166,143	63,052	809,160

* Withheld to avoid disclosure of individual company data. Data included in totals.

** 2002 data not submitted. Data is from 2001.

TABLE 6 (Continued)

MINNESOTA ELECTRIC SALES REVENUE IN 2002 (\$1,000)

Minnesota Electric Sales Revenue for Municipal Utilities

	<u>Farm</u>	<u>Non-Farm Residential</u>	<u>Commercial</u>	<u>Industrial</u>	<u>Total</u>
Minnkota Power Cooperative - Municipality					
Bagley Pub Utility	0	342	*	*	1,297
Baudette City Of	0	366	*	*	1,446
Fosston Municipal Utility	0	639	849	361	1,849
Halstad Mun Utilities	0	257	254	0	511
Hawley Pub Utilities	0	593	477	0	1,070
Roseau Mun Water&Light	0	927	1,209	0	2,136
Stephen Electric Dept	0	284	273	0	557
Thief River Falls Mun Util	0	2,245	2,293	1,876	6,415
Warren City Of	0	549	578	0	1,127
Warroad Mun Light & Power	0	523	752	921	2,196
Total: MPC-Municipal	0	6,725	7,828	4,051	18,604

TABLE 6 (Continued)

MINNESOTA ELECTRIC SALES REVENUE IN 2002 (\$1,000)

Minnesota Electric Sales Revenue for Municipal Utilities

	Farm	Non-Farm Residential	Commercial	Industrial	Total
Other Municipals (Non-SMMPA)					
Ada Water & Light Dept	0	666	700	7	1,373
Adrian Public Utilities	*	411	*	44	801
Aitkin Pub Utilities	0	735	463	1,062	2,261
Alexandria Light & Power	0	4,160	3,212	5,183	12,555
Alpha City of	*	55	*	0	101
Alvarado Electric Dept	0	150	77	0	227
Anoka City Of	0	5,923	5,364	5,346	16,634
Arlington City Of	0	574	679	0	1,253
Barnesville Mun Elec	0	788	287	0	1,075
Benson Municipal Utilities	*	753	*	565	1,701
Bigelow City of^	6	53	46	0	106
Biwabik Water Light&Power	0	209	259	0	468
Blue Earth Light&Water	0	997	498	1,938	3,433
Brainerd Public Utilities	0	2,829	4,163	3,059	10,051
Breckenridge Pub Utilities	0	829	502	594	1,926
Brewster Elec Light&Power	3	132	46	96	277
Brownton Mun Light&Power	0	230	93	21	344
Buffalo City Of	2	2,296	3,749	664	6,711
Buhl Pub Utilities	0	216	163	0	379
Caledonia Mun Light&Power	6	712	159	556	1,433
Ceylon Public Utilities	0	137	64	0	201
City of Chaska-Utility Dept.	0	3,955	866	9,380	14,202
Darwin Electric Dept**	0	100	32	0	132
Delano Mun Utilities	0	1,092	364	1,550	3,005

* Withheld to avoid disclosure of individual company data. Data included in totals.

^ Data is from 1997. Utility has not provided updated information.

** 2002 data not submitted. Data is from 2001.

TABLE 6 (Continued)

MINNESOTA ELECTRIC SALES REVENUE IN 2002 (\$1,000)

Minnesota Electric Sales Revenue for Municipal Utilities

	Farm	Non-Farm Residential	Commercial	Industrial	Total
Other Municipals (Non-SMMPA, continued)					
Detroit Lakes Pub Utilities	0	2,942	1,873	3,160	7,975
Dundee Electric Utility	*	33	*	0	52
Dunnell Electric Department	0	48	45	0	93
East Grand Forks Water&Light	0	2,383	2,238	3,423	8,045
Eitzen Public Utilities	0	91	38	26	155
Elbow Lake Mun Elec	0	395	477	0	872
Elk River Mun Utilities**	0	3,910	1,476	4,216	9,602
Ely Water & Light Dept	0	800	1,065	0	1,865
Fairfax Public Utilities	4	350	225	110	689
Gilbert Water&Light	0	347	298	0	645
Glencoe Mun Utilities	0	1,550	1,998	1,492	5,040
Grand Rapids Pub Utilities	0	2,825	5,137	982	8,943
Granite Falls Municipal Utilities	2	778	964	24	1,768
Grove City Electric Dept	42	283	262	0	587
Harmony Electric Dept	0	279	279	3	561
Henning Electric Dept	0	204	260	0	464
Hibbing Public Utilities	0	3,668	4,854	411	8,933
Hutchinson Utilities	0	2,880	5,407	6,795	15,083
Jackson Elec Light&Power	0	860	378	1,236	2,474
Janesville Mun Utilities**	0	503	333	0	837
Kandiyohi Municipal Utilities	0	165	26	0	191
Kasota Elec Light	0	244	0	0	244
Kasson City Of	0	1,204	725	0	1,928
Keewatin Public Utilities	0	338	32	0	370
Kenyon Mun Utilities	0	511	425	266	1,202
Lake Crystal Mun	15	716	517	0	1,248
Lake Park Pub Utilities	0	218	168	0	386
Lakefield Pub Utilities	0	396	327	0	722
Lanesboro Pub Utilities	0	146	207	0	353
Le Sueur Mun Utilities	196	1,007	680	3,799	5,681
Luverne Public Utilities	0	1,434	686	1,728	3,848
Mabel City of**	0	158	175	0	334
Madelia Municipal Light & Power	0	619	705	539	1,863
Madison Mun Utilities	0	444	428	152	1,024
Marshall Municipal Utilities	0	2,797	1,769	16,708	21,274
Melrose Public Utilities	94	669	770	2,312	3,845

* Withheld to avoid disclosure of individual company data. Data included in totals.

** 2002 data not submitted. Data is from 2001.

TABLE 6 (Continued)

MINNESOTA ELECTRIC SALES REVENUE IN 2002 (\$1,000)

Minnesota Electric Sales Revenue for Municipal Utilities

	Farm	Non-Farm Residential	Commercial	Industrial	Total
Other Municipals (Non-SMMPA, Continued)					
Moorhead Pub Service	0	6,973	2,102	7,560	16,635
Moose Lake Water&Light	0	340	787	592	1,719
Mountain Iron Water&Light	0	409	460	86	956
Mountain Lake Mun Utilities	0	637	276	449	1,362
Nashwauk Pub Utilities	0	212	246	0	458
New Ulm Pub Utilities	0	4,204	4,972	4,802	13,978
Newfolden Electric	0	117	103	0	220
Nielsville Vlg Light System	0	40	6	0	46
North St Paul City Of	0	3,590	2,552	0	6,142
Olivia City Of	0	697	200	698	1,595
Ortonville City Of	5	616	632	0	1,253
Peterson Public Utilities	0	105	0	0	105
Pierz Utilities	0	272	363	8	643
Proctor Pub Utilities	0	673	*	*	1,369
Randall City of	0	165	*	*	316
Round Lake Electric Dept	0	118	70	383	571
Rushford City of**	0	431	231	301	963
Rushmore City of	0	130	34	0	164
Sauk Centre Public Utilities	0	938	587	1,153	2,678
Shakopee Public Utilities	81	7,238	528	9,959	17,806
Shelly Municipal Light Dept.	0	96	48	0	143
Sleepy Eye Pub Utilities	0	852	757	998	2,607
Spring Grove Municipal Electric	18	317	274	238	847
Springfield Pub Utilities	0	572	388	622	1,582
St Charles Light&Water	0	840	327	562	1,729
St. James City of	3	964	*	*	3,203
Staples City of	0	661	417	294	1,371
Truman Municipal Utility	73	500	620	0	1,193
Two Harbors Water&Light	0	1,697	256	2	1,955
Tyler Mun Light&Power	34	328	240	0	602
Virginia Pub Utilities	0	2,573	4,349	0	6,921
Wadena Light & Water	0	1,148	361	1,660	3,170
Westbrook Mun Light&Power	16	251	171	21	459

* Withheld to avoid disclosure of individual company data. Data included in totals.

** 2002 data not submitted. Data is from 2001.

TABLE 6 (Continued)

MINNESOTA ELECTRIC SALES REVENUE IN 2002 (\$1,000)

Minnesota Electric Sales Revenue for Municipal Utilities

	Farm	Non-Farm Residential	Commercial	Industrial	Total
Whalan City of**	0	16	13	0	29
Willmar Mun Utilities	0	4,765	5,455	6,455	16,675
Windom Municipal Utilities	0	998	816	1,241	3,055
Winthrop City Of	18	377	*	*	936
Worthington Mun Power	0	2,227	4,141	3,456	9,824
Total: Non-SMMPA Mun.	623	111,288	92,954	120,260	325,126
Southern Minnesota Municipal Power Agency					
Austin Utilities	523	5,992	*	*	19,965
Blooming Prairie Utilities	0	459	912	0	1,371
Fairmont Pub Utilities	272	2,789	3,108	3,477	9,645
Grand Marais Utilities	0	511	854	0	1,365
Lake City Utility Board	4	1,652	1,387	3,882	6,924
Litchfield Pub Utilities	18	1,542	1,499	1,871	4,931
Mora Mun Elec Utility	33	736	1,249	1,104	3,122
New Prague Mun Utilities	0	1,077	1,687	814	3,579
North Branch Mun Water&Light	0	892	*	*	2,145
Owatonna Public Utilities	0	5,772	4,168	11,279	21,219
Preston Public Utilities	8	398	297	241	944
Princeton Pub Utilities	0	1,184	680	1,529	3,393
Redwood Falls Pub Utilities	0	1,383	769	1,186	3,338
Rochester Pub Utilities	0	25,569	41,804	13,093	80,466
Spring Valley Pub Utility	0	709	682	0	1,391
St Peter Mun Utilities	0	2,099	2,203	1,256	5,558
Waseca Utility	0	2,509	975	1,609	5,093
Wells Public Utilities	0	712	1,177	0	1,889
Total: SMMPA	858	55,985	72,677	46,817	176,336
Total: Municipal Utilities	1,482	173,997	173,459	171,128	520,066
Total: Minnesota	215,701	1,315,785	1,186,304	922,033	3,639,822

* Withheld to avoid disclosure of individual company data. Data included in totals.

** Data is from 1998. Utility has not provided updated information.

TABLE 7

MINNESOTA RESIDENTIAL SPACE HEATING CUSTOMERS IN 2002
--

Minnesota Space Heating Customers for Investor-Owned Utilities

	<u>Customers</u>	<u>Megawatt-Hours</u>
Investor-Owned Utilities		
Alliant Energy-Interstate Power Co*	1,475	18,955
Minnesota Power Company	10,980	150,990
Otter Tail Power Co	7,245	130,702
Xcel Energy	28,115	376,171
Total: Investor-Owned Utilities	47,815	676,818

*2002 data not provided. Data is from 2001.

TABLE 7 (Continued)

MINNESOTA RESIDENTIAL SPACE HEATING CUSTOMERS IN 2002
--

Minnesota Space Heating Customers for Cooperative Utilities

	<u>Customers</u>	<u>Megawatt-Hours</u>
Dairyland Power Cooperative		
Freeborn Mower Elec Coop	848	6,481
Heartland Power Coop	2	30
Peoples Coop Power Assoc., Inc.	1,295	17,500
Tri-Co Elec Coop	1,460	43,432
Total: Dairyland Power	3,605	67,443
East River Electric Cooperative		
Lyon-Lincoln Elec Coop	817	23,129
Renville Sibley Coop Power	278	4,249
Traverse Elec Coop	538	3,701
Total: East River Electric	1,633	31,079

TABLE 7 (Continued)

MINNESOTA RESIDENTIAL SPACE HEATING CUSTOMERS IN 2002
--

Minnesota Space Heating Customers for Cooperative Utilities

	<u>Customers</u>	<u>Megawatt-Hours</u>
Great River Energy		
Agralite Cooperative	1,526	11,990
Anoka Electric Coop	594	7,574
Arrowhead Electric Coop	450	5,350
BENCO Electric Coop	370	5,118
Brown Co Rural Elec Assn	296	3,511
Coop Light & Power Assoc of Lake Co	894	11,740
Crow Wing Coop Pwr&Light	5,300	65,508
Dakota Electric Assn	1,412	23,629
East Central Elec Assn	3,643	1,428
Federated Rural Elec Assn	733	12,021
Goodhue Co Coop Elec Assn	202	3,647
Head Of The Lakes Elec Coop	45	360
Itasca-Mantrap Coop Elec	2,200	31,677
Kandiyohi Coop Elec Power	1,333	9,281
Lake Country Power	9,920	96,900
Lake Region Coop Elec Assc	1,770	20,637
McLeod Coop Power Assn	525	5,950
Meeker Coop Light&Power Assn	1,675	24,064
Mille Lacs Elec Coop	1,680	16,300
Minnesota Valley Elec Coop	2,936	19,000
Nobles Coop Electric	451	11,786
North Itasca Elec Coop	331	6,176
Redwood Elec Coop	415	4,665
Runestone Elec Assn	2,484	44,277
South Central Elec Assn	275	4,800
Stearns Coop Elec Assn	2,599	66,008
Steele Waseca Coop Elec	624	7,496
Todd Wadena Coop	980	21,560
Wright Hennepin Coop Elec	3,418	79,004
Total: Great River Energy	49,081	621,457

TABLE 7 (Continued)

MINNESOTA RESIDENTIAL SPACE HEATING CUSTOMERS IN 2002

Minnesota Space Heating Customers for Cooperative Utilities

	<u>Customers</u>	<u>Megawatt-Hours</u>
Minnkota Power Cooperative - Cooperative		
Beltrami Elec Coop	6,425	129,637
Clearwater-Polk Elec Coop	1,606	22,434
North Star Elec Coop	1,740	24,000
PKM Electric Cooperative	1,537	22,024
Red Lake Elec Coop	1,762	33,724
Red River Valley Coop Power	2,123	31,919
Roseau Electric Coop	2,807	96,244
Wild Rice Elec Coop*	3,387	97,480
Total: MPC - Cooperative	21,387	457,462
Other Cooperatives		
Iowa Lakes Electric Cooperative	1	27
Minnesota Valley Coop Lt&Pwr	1,248	17,948
Sioux Valley Southwestern Electric	652	23,260
Total: Other Cooperatives	1,901	41,235
Total: Cooperatives	77,607	1,218,676

*2002 data not provided. Data is from 2001.

TABLE 7 (Continued)

MINNESOTA RESIDENTIAL SPACE HEATING CUSTOMERS IN 2002
--

Minnesota Space Heating Customers for Municipal Utilities

	<u>Customers</u>	<u>Megawatt-Hours</u>
Minnkota Power Cooperative - Municipality		
Bagley Pub Utility	193	3,166
Baudette City Of	110	1,791
Fosston Municipal Utility	302	4,894
Halstad Mun Utilities	102	1,698
Hawley Pub Utilities	160	2,100
Roseau Mun Water&Light	405	11,534
Stephen Electric Dept	89	2,198
Thief River Falls Mun Util	621	9,077
Warren City Of	115	2,140
Warroad Mun Light & Power	142	1,876
Total: MPC-Municipal	2,239	40,474
Other Municipals (Non-SMMPA)		
Ada Water & Light Dept	183	3,005
Adrian Public Utilities	74	2,846
Aitkin Pub Utilities	157	2,485
Alexandria Pub Works	1,077	17,033
Alpha City of	2	34
Alvarado Electric Dept	38	630
Anoka City Of	104	1,642
Arlington City Of	11	306
Barnesville Mun Elec	260	4,282
Benson Municipal Utilities	14	240
Biwabik Water Light&Power	18	3,475
Blue Earth Light&Water	67	633
Brainerd Public Utilities	195	2,038
Breckenridge Pub Utilities	303	6,703
Brewster Elec Light&Power	7	217
Brownton Mun Light&Power	31	298
Buffalo City Of	264	2,722
Buhl Pub Utilities	30	340
Caledonia Mun Light&Power	7	356
Chaska City of	26	4,100
Darwin Electric Dept*	130	1,180
Delano Mun Utilities	84	950
Detroit Lakes Pub Utilities	891	19,673
Dundee City of	2	23
East Grand Forks Water&Light	513	8,414
Eitzen Public Utilities	14	119
Elbow Lake Mun Elec	123	2,050

*2002 data not provided. Data is from 2001.

TABLE 7 (Continued)

MINNESOTA RESIDENTIAL SPACE HEATING CUSTOMERS IN 2002
--

Minnesota Space Heating Customers for Municipal Utilities

	<u>Customers</u>		<u>Megawatt-Hours</u>
Other Municipals (Non-SMMPA, continued)			
Elk River Mun Utilities*	168		2,938
Ely Water & Light Dept	49		400
Fairfax Public Utilities	115		1,782
Gilbert Water&Light	5		77
Glencoe Mun Utilities	96		1,569
Grand Rapids Pub Utilities	516		7,238
Granite Falls Municipal Utilities	120		2,000
Harmony Electric Dept	7		60
Henning Electric Dept	78		1,357
Hibbing Public Utilities	600		6,478
Hutchinson Utilities	246		2,666
Jackson Elec Light&Power	203		1,986
Kandiyohi Municipal Utilities	20	**	
Kasson City Of	34		428
Keewatin Public Utilities	4		946
Kenyon Mun Utilities	16		125
Lake Crystal Mun	60		812
Lake Park Pub Utilities	28		199
Lakefield Pub Utilities	40		532
Lanesboro Pub Utilities	31		99
Le Sueur Mun Utilities	7		108
Luverne Mun Utilities	202		3,565
Mabel City of	4		17
Madelia Municipal Light & Power	7		517
Madison Mun Utilities	117		1,874
Marshall Municipal Utilities	1,309		19,684
Melrose Mun Utilities	359		6,519
Moorhead Pub Service	4,098		**
Moose Lake Water&Light	91		1,022
Mountain Iron Water&Light	262		2,920
Nashwauk Pub Utilities	3		63
New Ulm Pub Utilities	5		347
Newfolden Electric	30		519
North St Paul City Of	6		237
Olivia City Of	157		2,275
Ortonville City Of	162		2,320
Peterson Public Utilities	15		130
Pierz Utilities	5		46
Proctor Pub Utilities	160		2,204
Randall Electric	6		162
Round Lake Electric Dept	3		2,725

*2002 data not provided. Data is from 2001.

** Not known.

TABLE 7 (Continued)

MINNESOTA RESIDENTIAL SPACE HEATING CUSTOMERS IN 2002
--

Minnesota Space Heating Customers for Municipal Utilities

	Customers	Megawatt-Hours
Other Municipals (Non-SMMPA, continued)		
Rushford City of	46	1,307
Rushmore City of	9	100
Sauk Centre Water Light&Power	230	3,070
Shakopee Public Util	400	4,500
Shelly Municipal Light Dept.	33	397
Sleepy Eye Pub Utilities	31	200
Springfield Pub Utilities	62	865
St Charles Light&Water	132	1,145
St. James-City of	195	2,480
Staples City of	38	226
Truman Municipal Utility	36	264
Two Harbors Water&Light	7	133
Tyler Mun Light&Power	100	3,400
Virginia Pub Utilities	254	4,606
Wadena Light & Water	295	5,394
Willmar Mun Utilities	266	8,184
Windom Municipal Utilities	35	960
Winthrop City Of	3	134
Worthington Mun Power	199	1,707
Total: Non-SMMPA Municipalities	16,440	203,811
Southern Minnesota Municipal Power Agency		
Austin Utilities	187	1,070
Blooming Prairie Utilities	10	219
Fairmont Pub Utilities	116	2,361
Grand Marais Utilities	112	2,199
Lake City Utility Board	59	521
Litchfield Pub Utilities	429	5,285
Mora Mun Elec Utility	89	880
New Prague Mun Utilities	61	399
North Branch Mun Water&Light	11	69
Owatonna Public Utilities	82	719
Preston Public Utilities	54	573
Princeton Pub Utilities	47	1,401
Redwood Falls Pub Utilities	612	8,600
Rochester Pub Utilities	1,541	15,507
Spring Valley Pub Utility	5	285
St Peter Mun Utilities	82	600
Waseca Water & Light Dept	98	847
Wells Public Utilities	82	441
Total: SMMPA	3,677	41,976
Total: Municipal Utilities	22,356	286,261
Total: Minnesota	147,778	2,181,755

TABLE 8

MINNESOTA ELECTRIC CONSUMPTION IN 2002 BY COUNTY

County	MWH	Consumption Rank*	Population Rank*
Aitkin	184,746	59	57
Anoka	2,344,746	5	4
Becker	352,503	35	34
Beltrami	530,679	21	23
Benton	806,410	10	26
Big Stone	66,747	85	81
Blue Earth	753,733	13	15
Brown	334,696	36	37
Carlton	491,753	25	31
Carver	769,589	11	11
Cass	457,496	27	36
Chippewa	140,775	67	62
Chisago	331,052	37	22
Clay	548,051	19	17
Clearwater	236,445	49	75
Cook	79,736	81	84
Cottonwood	186,952	57	63
Crow Wing	768,941	12	16
Dakota	4,421,902	4	3
Dodge	160,888	61	51
Douglas	399,651	34	28
Faribault	232,548	51	55
Fillmore	156,723	63	46
Freeborn	431,557	31	29
Goodhue	506,766	23	19
Grant	68,702	84	80
Hennepin	12,679,175	1	1
Houston	154,475	64	48
Hubbard	275,366	43	50
Isanti	255,394	47	33
Itasca	528,993	22	20
Jackson	123,337	71	66
Kanabec	118,214	73	59
Kandiyohi	483,867	26	21
Kittson	118,756	72	82
Koochiching	436,979	30	58
Lac Qui Parle	126,448	70	76
Lake	144,024	65	69
Lake of the Woods	72,560	83	85
Le Sueur	301,130	39	39
Lincoln	64,628	86	79
Lyon	664,055	17	40
McLeod	504,432	24	25
Mahnomen	72,829	82	83
Marshall	177,798	60	70

*Ranking is highest to lowest (1 is highest, 87 is lowest).

TABLE 8 (Continued)

MINNESOTA ELECTRIC CONSUMPTION IN 2002 BY COUNTY

County	MWH	Consumption Rank*	Population Rank*
Martin	282,213	41	44
Meeker	268,058	45	42
Mille Lacs	207,566	55	43
Morrison	425,797	32	30
Mower	409,647	33	24
Murray	91,269	79	74
Nicollet	305,068	38	35
Nobles	270,431	44	47
Norman	92,221	78	77
Olmstead	1,452,794	8	8
Otter Tail	680,595	16	13
Pennington	190,331	56	61
Pine	213,684	54	38
Pipestone	111,835	76	72
Polk	445,048	28	32
Pope	113,561	74	67
Ramsey	5,616,836	3	2
Red Lake	99,548	77	86
Redwood	213,917	53	53
Renville	280,868	42	52
Rice	631,542	18	14
Rock	130,636	68	73
Roseau	258,780	46	54
St. Louis	7,194,272	2	6
Scott	1,055,791	9	10
Sherburne	741,859	15	12
Sibley	185,093	58	56
Stearns	1,608,979	7	7
Steele	438,200	29	27
Stevens	129,391	69	71
Swift	157,119	62	64
Todd	283,420	40	41
Traverse	53,049	87	87
Wabasha	234,284	50	45
Wadena	218,531	52	60
Waseca	237,062	48	49
Washington	2,072,677	6	5
Watonwan	141,458	66	65
Wilkin	81,332	80	78
Winona	546,797	20	18
Wright	744,335	14	9
Yellow Medicine	112,574	75	68

*Ranking is highest to lowest (1 is highest, 87 is lowest).

TABLE 9

ELECTRIC GENERATING PLANTS SERVING MINNESOTA DURING CALENDAR YEAR 2002

Plant Profile					
Unit Type	Energy Source	Capacity		Year Installed	
		Summer (MW)	Winter (MW)		
Aitkin Public Utilities Commission					
Aitkin Power Plant Aitkin County, MN					
Unit 1	Int Comb	Oil #2	0.104	0.104	1936
Unit 5	Int Comb	Oil #2	0.808	0.808	1947
Unit 6	Int Comb	Oil #2	1.192	1.192	1953
Alexandria Board of Public Works					
Alexandria Power Plant Douglas County, MN					
Unit 1	Int Comb	Oil #2	1.000	1.000	1952
Unit 2	Int Comb	Gas/Oil #2	4.000	4.000	1968
Unit 3	Int Comb	Gas/Oil #2	4.000	4.000	1968
Alliant Energy-Interstate Power Company					
Agency Street Gas Turbine Des Moines County, IA					
Unit 1	Gas Turbine	Gas/Oil #2	17.700	16.400	1989
Unit 2	Gas Turbine	Gas/Oil #2	17.600	17.900	1989
Unit 3	Gas Turbine	Gas/Oil #2	17.100	17.400	1989
Unit 4	Gas Turbine	Gas/Oil #2	17.600	16.900	1989
Ames Diesel Story County, IA					
Unit 1	Int Comb	Oil #2	1.000	1.000	1960
Unit 2	Int Comb	Oil #2	1.000	1.000	1960
Anamosa Hydro Jones County, IA					
Unit 1	Hydro	Water	0.200	0.200	1924
Burlington Gas Turbine Des Moines County, IA					
Unit 1	Gas Turbine	Gas	16.900	0.000	1995
Unit 2	Gas Turbine	Gas	17.800	0.000	1995
Unit 3	Gas Turbine	Gas	18.000	0.000	1995
Unit 4	Gas Turbine	Gas	18.000	0.000	1996
Burlington Generating Station Des Moines County, IA					
Unit 1	Steam	Coal/Gas	214.100	219.300	1968

TABLE 9

ELECTRIC GENERATING PLANTS SERVING MINNESOTA DURING CALENDAR YEAR 2002

Plant Profile					
Unit Type	Energy Source	Capacity		Year Installed	
		Summer (MW)	Winter (MW)		
Centerville Diesel Apanoose County, IA					
Unit 1	Int Comb	Oil #2	2.100	2.100	1963
Unit 2	Int Comb	Oil #2	1.900	1.900	1963
Unit 3	Int Comb	Oil #2	1.900	1.900	1963
Centerville Gas Turbine Appanoose County, IA					
Unit 1	Gas Turbine	Oil #2	24.900	30.000	1990
Unit 2	Gas Turbine	Oil #2	26.400	31.500	1990
Duane Arnold Energy Center (70% share) Benton County, IA					
Unit 1	Nuclear	Uranium	393.100	412.800	1974
Dubuque Internal Combustion Dubuque County, IA					
Unit 1	Int Comb	Oil #2	2.300	2.300	1966
Unit 2	Int Comb	Oil #2	2.400	2.400	1966
Dubuque Steam Dubuque County, IA					
Unit 2	Steam	Coal/Gas	13.100	14.200	1929
Unit 3	Steam	Coal/Gas	30.000	30.900	1952
Unit 4	Steam	Coal/Gas	34.900	36.200	1959
Fox Lake Gas Turbine Martin County, MN					
Unit 4	Gas Turbine	Oil #2	19.500	24.100	1974
Fox Lake Steam Martin County, MN					
Unit 1	Steam	Gas/Oil #6	12.500	0.000	1950
Unit 2	Steam	Gas/Oil #6	12.000	0.000	1951
Unit 3	Steam	Coal/Gas/Oil #6	85.000	82.500	1962
Grinnell Gas Turbine Poweshiek County, IA					
Unit 1	Gas Turbine	Gas	25.600	0.000	1990
Unit 2	Gas Turbine	Gas	22.700	0.000	1990
Hills Internal Combustion Rock County, MN					
Unit 1	Int Comb	Oil #2	1.900	0.000	1996
Unit 2	Int Comb	Oil #2	1.800	1.800	1960
Iowa Falls Hydro Hardin County, IA					
Unit 1	Hydro	Water	0.700	0.700	1926

TABLE 9

ELECTRIC GENERATING PLANTS SERVING MINNESOTA DURING CALENDAR YEAR 2002

Plant Profile					
Unit Type	Energy Source	Capacity		Year Installed	
		Summer (MW)	Winter (MW)		
Lansing Internal Combustion Allamakee County, IA					
Unit 1	Int Comb	Oil #2	1.000	1.000	1970
Unit 2	Int Comb	Oil #2	1.000	1.000	1971
Lansing Steam Allamakee County, IA					
Unit 1	Steam	Coal/Oil #2	16.300	17.500	1948
Unit 2	Steam	Coal/Oil #2	11.200	12.000	1949
Unit 3	Steam	Coal/Oil #2	31.600	32.800	1957
Unit 4	Steam	Coal/Oil #2	258.000	262.400	1977
Lime Creek Cerro Gordo County, IA					
Unit 1	Gas Turbine	Oil #2	36.500	43.200	1991
Unit 2	Gas Turbine	Oil #2	36.700	43.400	1991
Louisa Station No. 1 (4% share) Louisa County, IA					
Unit 1	Steam	Coal/Gas	28.000	28.000	1983
M.L. Kapp Steam Clinton County, IA					
Unit 1	Steam	Gas	17.700	0.000	1947
Unit 2	Steam	Coal/Gas	218.000	221.500	1967
Maquokate Hydro Jackson County, IA					
Unit 1	Hydro	Water	0.600	0.600	1924
Unit 2	Hydro	Water	0.600	0.600	1924
Marshalltown Gas Turbine Marshall County, IA					
Unit 1	Gas Turbine	Oil #2	56.200	66.200	1977
Unit 2	Gas Turbine	Oil #2	57.100	67.400	1977
Unit 3	Gas Turbine	Oil #2	57.000	66.700	1977
Montgomery Gas Turbine LeSueur County, MN					
Unit 1	Gas Turbine	Oil #2	19.900	25.000	1974
Neal No. 3 (28% share) Woodbury County, IA					
Unit 1	Steam	Coal/Gas	144.200	144.200	1975
Neal No. 4 (22% share) Woodbury County, IA					
Unit 4	Steam	Coal/Oil #2	138.600	138.600	1979
Ottumwa Generating Station Wappello County, IA					
Unit 1	Steam	Coal/Oil #2	345.700	345.700	1981

TABLE 9

ELECTRIC GENERATING PLANTS SERVING MINNESOTA DURING CALENDAR YEAR 2002

Plant Profile

	Unit Type	Energy Source	Capacity		Year Installed
			Summer (MW)	Winter (MW)	
Prairie Creek Linn County, IA					
Unit 1A	Steam	Coal/Oil #2	1.600	1.600	1997
Unit 2	Steam	Coal/Oil #2/Gas	20.300	21.400	1950
Unit 3	Steam	Coal/Oil #2	44.700	47.300	1958
Unit 4	Steam	Coal/Oil #2/Landfill Gas	128.600	130.100	1968
Red Cedar Linn County, IA					
Unit 1	Gas Turbine	Gas	18.000	20.500	1996
Sixth Street Station Linn County, IA					
Unit 1	Steam	Coal	0.000	0.000	1921
Unit 2	Steam	Coal/Gas/REF	2.400	2.600	1930
Unit 4	Steam	Coal/Gas/REF	6.500	6.400	1941
Unit 6	Steam	Coal	0.000	0.000	1925
Unit 7	Steam	Coal/Gas/REF	20.100	11.700	1944
Unit 8	Steam	Coal/Gas/REF	30.200	30.700	1950
Sutherland Station Marshall County, IA					
Unit 1	Steam	Coal/Gas	33.6	33.6	1955
Unit 2	Steam	Coal/Gas	32.6	32.6	1955
Unit 3	Steam	Coal/Gas	80.9	82.1	1961
Austin Utilities					
DT Plant Mower County, MN					
Unit 1	Steam	Gas	5.000	5.000	1940
Unit 2	Steam	Gas	3.500	3.500	1935
Unit 3	Steam	Gas	7.500	7.500	1946
Unit 4	Steam	Gas	10.000	10.000	1955
Unit 5	Gas Turbine	Gas	5.000	5.000	1961
Northeast Plant Mower County, MN					
Unit 1	Steam	Coal/Gas	31.500	31.500	1971

TABLE 9

ELECTRIC GENERATING PLANTS SERVING MINNESOTA DURING CALENDAR YEAR 2002

Plant Profile					
	Unit Type	Energy Source	Capacity		Year Installed
			Summer (MW)	Winter (MW)	
Benson Municipal Utilities					
Benson Municipal Utilities Swift County, MN					
Unit 5	Int Comb	Oil #2	0.925	0.925	1947
Unit 6	Int Comb	Oil #2	1.275	1.275	1954
Unit 7	Int Comb	Oil #2	1.800	1.800	2002
Unit 8	Int Comb	Oil #2	1.800	1.800	2002
Unit 9	Int Comb	Oil #2	1.800	1.800	2002
Unit 10	Int Comb	Oil #2	1.800	1.800	2002
Unit 11	Int Comb	Oil #2	1.800	1.800	2002
Blue Earth Light & Water					
Blue Earth City Plant Faribault County, MN					
Unit 1	Int Comb	Oil #2/Gas	1.500	1.500	1960
Unit 3	Int Comb	Oil #2	1.600	1.600	1993
Unit 4	Int Comb	Oil #2	1.600	1.600	1993
Unit 5	Int Comb	Oil #2	1.600	1.600	1993
Unit 6	Int Comb	Oil #2	1.800	1.800	1995
Dairyland Power Cooperative					
Alma Station Buffalo County, WI					
Unit 1	Steam	Coal/Oil #2	15.000	15.000	1947
Unit 2	Steam	Coal/Oil #2	15.000	15.000	1947
Unit 3	Steam	Coal/Oil #2	15.000	15.000	1950
Unit 4	Steam	Coal/Oil #2	54.000	54.000	1957
Unit 5	Steam	Coal/Oil #2	82.000	82.000	1960
Elk Mound Combustion Turbine Rusk County, WI					
Unit 1	Gas Turbine	Gas	36.000	48.000	2001
Unit 2	Gas Turbine	Gas	36.000	47.000	2001
Flambeau Hydroelectric Rusk County, WI					
Unit 1	Hydro	Water	6.000	6.000	1951
Unit 2	Hydro	Water	6.000	6.000	1951
Unit 3	Hydro	Water	6.000	6.000	1951
Genoa 3 Vernon County, WI					
Unit 1	Steam	Coal/Oil #2	320.000	350.000	1969

TABLE 9

ELECTRIC GENERATING PLANTS SERVING MINNESOTA DURING CALENDAR YEAR 2002

Plant Profile					
Unit Type	Energy Source	Capacity		Year Installed	
		Summer (MW)	Winter (MW)		
JP Madgett Buffalo County, WI					
Unit 1	Steam	Coal/Oil #2	358.000	358.000	1979
Delano Municipal Utilities					
Delano Municipal Plant Wright County, MN					
Unit 1	Int Comb	Oil #2	0.840	0.840	1946
Unit 3	Int Comb	Oil #2	1.136	1.136	1951
Unit 4	Int Comb	Gas/Oil #2	1.140	1.140	1972
Unit 5	Int Comb	Gas/Oil #2	1.365	1.365	1973
Unit 6	Int Comb	Oil #2	1.250	1.250	1989
Unit 7	Int Comb	Oil #2	3.000	3.000	1994
Unit 8	Int Comb	Oil #2	3.125	3.125	1998
Unit 9	Int Comb	Oil #2	12.000	12.000	2002
Detroit Lakes Public Utilities					
Jet Plant Becker County, MN					
Unit 1	Gas Turbine	Diesel	9.620	9.620	1968
Elk River Municipal Utilities					
Elk River Municipal Utilities Diesel Plant Sherburne County, MN					
Unit 1	Int Comb	Diesel	0.610	0.610	1948
Unit 2	Int Comb	Diesel	0.640	0.640	1948
Unit 3	Int Comb	Diesel/Gas	3.400	3.400	1962
Unit 4	Int Comb	Diesel/Gas	5.700	5.700	1972
Fairfax, City of					
Fairfax Municipal Power Plant Renville County, MN					
Unit 1	Int Comb	Oil #2	0.900	0.900	1948
Unit 2A	Int Comb	Oil #2	1.820	1.820	2001
Unit 4	Int Comb	Oil #2	0.600	0.600	1940

TABLE 9

ELECTRIC GENERATING PLANTS SERVING MINNESOTA DURING CALENDAR YEAR 2002

Plant Profile					
Unit Type	Energy Source	Capacity		Year Installed	
		Summer (MW)	Winter (MW)		
Fairmont Public Utilities					
Fairmont Power Plant Martin County, MN					
Unit 3	Steam	Gas	4.800	0.000	1945
Unit 4	Steam	Gas	4.900	0.000	1949
Unit 5	Steam	Gas	12.200	0.000	1959
Unit 6	Int Comb	Gas/Oil #2	6.500	6.500	1975
Unit 7	Int Comb	Gas/Oil #2	6.700	6.700	1975
Glencoe Light and Power Commission					
Glencoe Municipal Electric Plant McLeod County, MN					
Unit 5	Int Comb	Oil #2/Gas	1.100	1.100	1957
Unit 6	Int Comb	Oil #2/Gas	1.100	1.100	1961
Unit 7	Int Comb	Oil #2/Gas	3.900	3.900	1966
Unit 8	Int Comb	Oil #2/Gas	5.600	5.600	1969
Unit 9	Int Comb	Oil #2/Gas	6.800	6.800	1973
Unit 10	Int Comb	Diesel	6.700	6.700	1985
Unit 11	Int Comb	Diesel	4.600	4.600	1998
Unit 12	Int Comb	Diesel	4.600	4.600	1998
Grand Marais Public Utilities					
Grand Marais Power Plant Cook County, MN					
Unit 2	Int Comb	Oil #2	0.600	0.600	1956
Unit 5	Int Comb	Oil #2	1.200	1.200	1961
Unit 6	Int Comb	Oil #2	1.000	1.000	1968
Granite Falls Municipal Utilities					
Granite Falls Municipal Hydroelectric Yellow Medicine County, MN					
Unit 1	Hydro	Water	0.300	0.300	1940
Unit 2	Hydro	Water	0.250	0.250	1932
Unit 3	Hydro	Water	0.867	0.867	1986
Great River Energy					
Cambridge Gas Turbine Plant Isanti County, MN					
Unit 1	Gas Turbine	Oil #2	22.000	29.000	1978

TABLE 9

ELECTRIC GENERATING PLANTS SERVING MINNESOTA DURING CALENDAR YEAR 2002

Plant Profile					
Unit Type	Energy Source	Capacity		Year Installed	
		Summer (MW)	Winter (MW)		
Coal Creek Diesel McLean County, ND					
Unit 1	Int Comb	Diesel	2.100	2.100	1979
Coal Creek Station McLean County, ND					
Unit 1	Steam	Coal	546.000	546.000	1979
Unit 2	Steam	Coal	546.000	546.000	1980
Elk River Station Sherburne County, MN					
Unit 1	Steam	RDF/Gas/Oil #2	11.400	11.400	1951
Unit 2	Steam	RDF/Gas/Oil #2	11.400	11.400	1951
Unit 3	Steam	RDF/Gas/Oil #2	20.400	20.400	1959
Lakefield Junction Martin County, MN					
Unit 1	Gas Turbine	Gas/Oil #2	81.000	92.000	2001
Unit 2	Gas Turbine	Gas/Oil #2	81.000	92.000	2001
Unit 3	Gas Turbine	Gas/Oil #2	81.000	92.000	2001
Unit 4	Gas Turbine	Gas/Oil #2	81.000	92.000	2001
Unit 5	Gas Turbine	Gas/Oil #2	81.000	92.000	2001
Unit 6	Gas Turbine	Gas/Oil #2	81.000	92.000	2001
Maple Lake Wright County, MN					
Unit 1	Gas Turbine	Oil #2	22.000	29.000	1978
Pleasant Valley Station Mower County, MN					
Unit 11	Gas Turbine	Gas/Oil #2	152.000	182.000	2001
Unit 12	Gas Turbine	Gas/Oil #2	152.000	182.000	2001
Rock Lake Pine County, MN					
Unit 1	Gas Turbine	Oil #2	22.000	29.000	1978
St. Bonifacious Power Plant Carver County, MN					
Unit 1	Gas Turbine	Oil #2	50.000	50.000	1978
Stanton Station Steam Plant Mercer County, ND					
Unit 1	Steam	Coal/Oil #2	184.500	184.500	1966

TABLE 9

ELECTRIC GENERATING PLANTS SERVING MINNESOTA DURING CALENDAR YEAR 2002

Plant Profile					
Unit Type	Energy Source	Capacity		Year Installed	
		Summer (MW)	Winter (MW)		
Halstad Municipal Utilities					
Halstad Diesel Plant Norman County, MN					
Unit 1	Int Comb	Oil #2	0.550	0.550	1954
Unit 2	Int Comb	Oil #2	0.200	0.200	1946
Unit 3	Int Comb	Oil #2	0.300	0.300	1939
Hastings Public Utilities Commission					
Hastings Hydroelectric Facility Dakota County, MN					
Unit 2	Hydro	Water	2.000	2.000	1987
Hawley Public Utilities					
Hawley Plant Clay County, MN					
Unit 1	Int Comb	Oil #2	0.089	0.089	1932
Unit 2	Int Comb	Oil #2	0.675	0.675	1957
Unit 3	Int Comb	Oil #2	0.097	0.097	1938
Unit 4	Int Comb	Oil #2	0.300	0.300	1947
Unit 5	Int Comb	Oil #2	0.300	0.300	1947
Hibbing Public Utilities					
Hibbing Public Utilities Plant St. Louis County, MN					
Unit 3	Steam	Coal/Gas	10.500	10.500	1965
Unit 5	Steam	Coal/Gas	19.500	19.500	1984
Unit 6	Steam	Coal/Gas	1.500	6.000	1996
Hutchinson Utilities Commission					
Hutchinson Municipal Plant No. 1 McLeod County, MN					
Unit 2	Int Comb	Gas/Oil #2	1.970	1.970	1958
Unit 3	Int Comb	Gas/Oil #2	3.900	3.900	1968
Unit 4	Int Comb	Gas/Oil #2	3.900	3.900	1968
Unit 5	Int Comb	Oil #2	1.740	1.740	1941
Unit 6	Int Comb	Oil #2	1.740	1.740	1942
Unit 7	Int Comb	Gas/Oil #2	4.500	4.500	1965
Unit 8	Comb Cycle	Gas/Oil #2	11.000	13.300	1971

TABLE 9

ELECTRIC GENERATING PLANTS SERVING MINNESOTA DURING CALENDAR YEAR 2002

Plant Profile					
	Unit Type	Energy Source	Capacity		Year Installed
			Summer (MW)	Winter (MW)	
Hutchinson Municipal Plant No. 2					
McLeod County, MN					
Unit 1	Comb Cycle	Gas	41.000	41.000	1994
Unit 2	Comb Cycle	Steam	10.000	10.000	1994
Unit 9	Gas Turbine	Gas/Oil #2	22.000	24.000	1977
Janesville Municipal Utilities					
Janesville Municipal Plant					
Waseca County, MN					
Unit 1	Int Comb	Oil #2/Gas	1.300	1.300	1972
Unit 2	Int Comb	Oil #2/Gas	1.000	1.000	1964
Unit 3	Int Comb	Oil #2/Gas	0.600	0.600	1955
Unit 4	Int Comb	Oil #2	1.800	1.800	1998
Kenyon Municipal Utility					
Kenyon Municipal Plant					
Goodhue, MN					
Unit 5	Int Comb	Oil #2	1.825	1.825	1997
Unit 6	Int Comb	Oil #2	1.825	1.825	1997
Unit 7	Int Comb	Oil #2	1.825	1.825	1997
Lake Crystal Municipal Utilities					
Lake Crystal Plant					
Blue Earth County, MN					
Unit 1	Int Comb	Gas/Oil #2	0.700	0.700	1952
Unit 3	Int Comb	Gas/Oil #2	2.100	2.100	1971
Unit 4	Int Comb	Gas/Oil #2	1.300	1.300	1955
Unit 5	Int Comb	Oil #2	1.800	1.800	1999
Lakefield Public Utilities					
Lakefield Power Plant					
Jackson County, MN					
Unit 1	Int Comb	Fuel Oil #2	0.144	0.144	1936
Unit 2	Int Comb	Fuel Oil #2	0.240	0.240	1936
Unit 3	Int Comb	Fuel Oil #2	0.480	0.480	1938
Unit 4	Int Comb	Fuel Oil #2	0.800	0.800	1948
Unit 5	Int Comb	Fuel Oil #2	1.000	1.000	1986
Lanesboro Public Utilities					
Lanesboro Power Plant - Diesel					
Fillmore County, MN					
Unit 2	Int Comb	Diesel	1.000	1.000	1968

TABLE 9

ELECTRIC GENERATING PLANTS SERVING MINNESOTA DURING CALENDAR YEAR 2002

Plant Profile					
	Unit Type	Energy Source	Capacity		Year Installed
			Summer (MW)	Winter (MW)	
Lanesboro Power Plant - Hydroelectric Fillmore County, MN					
Unit 1	Hydro	Water	0.230	0.230	1923
Litchfield Public Utilities					
Litchfield Power Plant Meeker County, MN					
Unit 1	Int Comb	Diesel/Gas	2.000	2.000	1962
Unit 2	Int Comb	Diesel/Gas	2.000	2.000	1962
Madelia Municipal Light & Power					
Madelia Municipal Plant Watsonwan County, MN					
Unit 1	Int Comb	Oil #2/Gas	2.800	3.160	2001
Unit 2	Int Comb	Oil #2/Gas	1.700	2.000	1966
Unit 3	Int Comb	Oil #2/Gas	0.800	0.800	1959
Unit 4	Int Comb	Oil #2/Gas	3.750	4.000	1973
Unit 5	Int Comb	Oil #2/Gas	1.200	1.200	1954
Marshall Municipal Utilities					
Marshall Power Plant Lyon County, MN					
Unit 6	Gas Turbine	Oil #2	15.000	19.000	1969
Melrose Public Utilities					
Melrose Power Plant Stearns County, MN					
Unit 1	Int Comb	Oil #2	0.750	0.750	1945
Unit 2	Int Comb	Oil #2	0.825	0.825	1948
Unit 3	Int Comb	Oil #2/Gas	3.000	3.000	1969
Unit 4	Int Comb	Oil #2/Gas	3.000	3.000	1969
Minnesota Power Company					
Blanchard Hydroelectric Station Morrison County, MN					
Unit 1	Hydro	Water	6.000	6.000	1925
Unit 2	Hydro	Water	6.000	6.000	1925
Unit 3	Hydro	Water	6.000	6.000	1988

TABLE 9

ELECTRIC GENERATING PLANTS SERVING MINNESOTA DURING CALENDAR YEAR 2002

Plant Profile					
	Unit Type	Energy Source	Capacity		Year Installed
			Summer (MW)	Winter (MW)	
Boswell EC (79% share of Unit 4)					
Itasca County, MN					
Unit 1	Steam	Coal/Oil #2	69.000	69.000	1958
Unit 2	Steam	Coal/Oil #2	69.000	69.000	1960
Unit 3	Steam	Coal/Oil #2	350.000	350.000	1973
Unit 4	Steam	Coal/Oil #2	425.000	425.000	1980
Cloquet Turbine Generator 5					
Carlton County, MN					
Unit 5	Steam	Wood/Gas	23.000	23.000	2001
Fond Du Lac Hydroelectric Station					
St. Louis County, MN					
Unit 1	Hydro	Water	12.000	12.000	1924
Knife Falls Hydroelectric Station					
Carlton County, MN					
Unit 1	Hydro	Water	0.800	0.800	1922
Unit 2	Hydro	Water	0.800	0.800	1922
Unit 3	Hydro	Water	0.800	0.800	1922
Laskin EC					
St. Louis County, MN					
Unit 1	Steam	Coal/Oil #2	55.000	55.000	1953
Unit 2	Steam	Coal/Oil #2	55.000	55.000	1953
Little Falls Hydroelectric Station					
Morrison County, MN					
Unit 1	Hydro	Water	0.800	0.800	1919
Unit 2	Hydro	Water	0.800	0.800	1919
Unit 3	Hydro	Water	1.100	1.100	1920
Unit 4	Hydro	Water	1.200	1.200	1979
Unit 5	Hydro	Water	0.400	0.400	1906
Unit 6	Hydro	Water	0.400	0.400	1906
M.L. Hibbard Steam Station					
St. Louis County, MN					
Unit 3	Steam	Coal/Wood	36.400	36.400	1949
Unit 4	Steam	Coal/Wood	24.300	24.300	1951
Pillager Hydroelectric Station					
Cass County, MN					
Unit 1	Hydro	Water	0.800	0.800	1917
Unit 2	Hydro	Water	0.800	0.800	1917
Prairie River Hydroelectric Station					
Itasca County, MN					
Unit 1	Hydro	Water	0.700	0.700	1921
Unit 2	Hydro	Water	0.400	0.400	1921

TABLE 9

ELECTRIC GENERATING PLANTS SERVING MINNESOTA DURING CALENDAR YEAR 2002

Plant Profile					
	Unit Type	Energy Source	Capacity		Year Installed
			Summer (MW)	Winter (MW)	
Rapids Energy Center Itasca County, MN					
Unit 4	Hydro	Water	0.500	0.500	1917
Unit 5	Hydro	Water	0.500	0.500	1948
Unit 6	Steam	Gas/Wood/Coal	14.000	14.000	1969
Unit 7	Steam	Gas/Wood/Coal	15.000	15.000	1980
Scanlon Hydroelectric Station Carlton County, MN					
Unit 1	Hydro	Water	0.400	0.400	1923
Unit 2	Hydro	Water	0.400	0.400	1923
Unit 3	Hydro	Water	0.400	0.400	1923
Unit 4	Hydro	Water	0.400	0.400	1923
Sylvan Hydroelectric Station Cass County, MN					
Unit 1	Hydro	Water	0.600	0.600	1913
Unit 2	Hydro	Water	0.600	0.600	1913
Unit 3	Hydro	Water	0.600	0.600	1931
Taconite Harbor Cook County, MN					
Unit 1	Steam	Coal/Oil #2	75.000	75.000	1953
Unit 2	Steam	Coal/Oil #2	75.000	75.000	1953
Unit 3	Steam	Coal/Oil #2	75.000	75.000	1954
Thomson Hydroelectric Station Carlton County, MN					
Unit 1	Hydro	Water	13.000	13.000	1907
Unit 2	Hydro	Water	13.000	13.000	1907
Unit 3	Hydro	Water	13.000	13.000	1907
Unit 4	Hydro	Water	10.800	10.800	1914
Unit 5	Hydro	Water	10.800	10.800	1918
Unit 6	Hydro	Water	12.000	12.000	1949
Winton Hydroelectric Station Lake County, MN					
Unit 2	Hydro	Water	2.000	2.000	1923
Unit 3	Hydro	Water	2.000	2.000	1923
Minnkota Power Cooperative, Inc. Coyote Station (30% share) Mercer County, ND					
Unit 1	Steam	Coal/Oil #2	128.100	128.10 0	1981

TABLE 9

ELECTRIC GENERATING PLANTS SERVING MINNESOTA DURING CALENDAR YEAR 2002

Plant Profile					
	Unit Type	Energy Source	Capacity		Year Installed
			Summer (MW)	Winter (MW)	
Grand Forks Diesel Plant Grand Forks County, ND					
Unit 1	Int Comb	Oil #2	0.679	0.679	1941
Unit 2	Int Comb	Oil #2	0.679	0.679	1941
Unit 3	Int Comb	Oil #2	0.679	0.679	1941
Unit 4	Int Comb	Oil #2	0.970	0.970	1946
Unit 5	Int Comb	Oil #2	0.970	0.970	1946
Unit 6	Int Comb	Oil #2	0.970	0.970	1946
Unit 7	Int Comb	Oil #2	1.067	1.067	1949
Unit 8	Int Comb	Oil #2	1.067	1.067	1949
Unit 9	Int Comb	Oil #2	1.067	1.067	1949
Unit 10	Int Comb	Oil #2	1.067	1.067	1949
Unit 11	Int Comb	Oil #2	1.067	1.067	1949
Harwood Diesel Plant Cass County, ND					
Unit 1	Int Comb	Oil #2	1.455	1.455	1957
Unit 2	Int Comb	Oil #2	1.552	1.552	1947
Unit 3	Int Comb	Oil #2	1.552	1.552	1947
Milton R. Young (29% share of Unit 2) Oliver County, ND					
Unit 1	Steam	Coal/Oil #2	250.000	250.000	1970
Unit 2	Steam	Coal/Oil #2	130.600	132.700	1977
Moorhead, City of					
Moorhead Power Plant Clay County, MN					
Unit 6	Gas Turbine	Oil #2	10.000	10.000	1960
Unit 8	Wind Turbine	Wind	0.750	0.750	1999
Unit 9	Wind Turbine	Wind	0.750	0.750	2001
Moose Lake Water & Light Commission					
Moose Lake Municipal Plant Carlton County, MN					
Unit 1	Int Comb	Oil #2	1.360	1.360	1973
Unit 2	Int Comb	Oil #2	1.136	1.136	1953
Unit 4	Int Comb	Oil #2	1.360	1.360	1962

TABLE 9

ELECTRIC GENERATING PLANTS SERVING MINNESOTA DURING CALENDAR YEAR 2002

Plant Profile					
Unit Type	Energy Source	Capacity		Year Installed	
		Summer (MW)	Winter (MW)		
New Ulm Public Utilities					
New Ulm Gas Turbine Plant Brown County, MN					
Unit 5	Gas Turbine	Oil #2	23.000	28.000	1975
Unit 7	Gas Turbine	Oil #2	25.000	29.000	2001
New Ulm Steam Plant Brown County, MN					
Unit 3	Steam	Coal/Gas	4.700	4.700	1957
Unit 4	Steam	Coal/Gas	13.200	13.200	1963
Unit 6	Steam	Coal/Gas	4.700	4.300	1947
Otter Tail Power Company					
Bemidji Hydroelectric Beltrami County, MN					
Unit 1	Hydro	Water	0.180	0.185	1907
Unit 2	Hydro	Water	0.620	0.600	1907
Big Stone Plant (54% share) Grant County, SD					
Unit 1	Steam	Coal/RDF	246.000	253.508	1975
Unit 2	Int Comb	Oil #2	0.635	0.636	1975
Coyote Station (35% share) Mercer County, ND					
Unit 1	Steam	Coal/Oil #2	149.450	149.450	1981
Dayton Hollow Hydroelectric Otter Tail County, MN					
Unit 1	Hydro	Water	0.540	0.532	1909
Unit 2	Hydro	Water	0.483	0.473	1919
Fergus Control Center Otter Tail County, MN					
Unit 1	Int Comb	Oil #2	2.041	2.037	1995
Hoot Lake Hydroelectric Otter Tail County, MN					
Unit 1	Hydro	Water	0.768	0.775	1914
Hoot Lake Steam Plant Otter Tail County, MN					
Unit 1	Steam	Coal/Oil #2	7.925	7.950	1948
Unit 2	Steam	Coal/Oil #2	63.450	62.400	1959
Unit 2A	Int Comb	Oil #2	0.265	0.259	1959
Unit 3	Steam	Coal/Oil #2	84.000	84.000	1964
Unit 3A	Int Comb	Oil #2	0.165	0.162	1964

TABLE 9

ELECTRIC GENERATING PLANTS SERVING MINNESOTA DURING CALENDAR YEAR 2002

Plant Profile					
	Unit Type	Energy Source	Capacity		Year Installed
			Summer (MW)	Winter (MW)	
Jamestown Turbine Plant					
Stutsman County, ND					
Unit 1	Int Comb	Oil #2	22.414	28.400	1976
Unit 2	Int Comb	Oil #2	21.938	26.791	1978
Lake Preston Turbine Plant					
Kingsbury County, SK					
Unit 1	Int Comb	Oil #2	21.259	26.791	1978
Pisgah Hydroelectric					
Otter Tail County, MN					
Unit 1	Hydro	Water	0.731	0.736	1918
Potlatch Cogeneration					
Beltrami County, MN					
Unit 1	Steam	Wood Waste/REF	5.800	5.950	1992
Taplin Gorge Hydroelectric					
Otter Tail County, MN					
Unit 1	Hydro	Water	0.555	0.540	1925
Wright Hydroelectric					
Otter Tail County, MN					
Unit 1	Hydro	Water	0.476	0.488	1922
Preston Public Utilities					
Preston Power Plant					
Fillmore County, MN					
Unit 4	Int Comb	Diesel	0.675	0.675	1949
Unit 5	Int Comb	Diesel	1.000	1.000	1956
Unit 6	Int Comb	Diesel/Gas	2.000	2.000	1973
Princeton Public Utilities					
Princeton Power Plant					
Mille Lacs County, MN					
Unit 3	Int Comb	Oil #2	2.400	2.400	1977
Unit 4	Int Comb	Oil #2	1.200	1.200	1967
Unit 5	Int Comb	Oil #2	1.000	1.000	1953
Unit 6	Int Comb	Oil #2	2.750	2.750	1963

TABLE 9

ELECTRIC GENERATING PLANTS SERVING MINNESOTA DURING CALENDAR YEAR 2002

Plant Profile					
Unit Type	Energy Source	<u>Capacity</u>		Year Installed	
		Summer (MW)	Winter (MW)		
Redwood Falls Public Utilities Commission					
Redwood Falls Power Plant Redwood County, MN					
Unit 1A	Hydro	Water	3.000	3.000	1930
Unit 2	Int Comb	Diesel	5.800	5.800	1973
Southside Substation Plant Redwood County, MN					
Unit 1	Int Comb	Diesel	2.200	2.200	1968
Unit 3	Int Comb	Diesel	2.000	2.000	2002
Unit 4	Int Comb	Diesel	2.000	2.000	2002
Unit 5	Int Comb	Diesel	2.000	2.000	2002
Rochester Public Utilities					
Cascade Creek Olmsted County, MN					
Unit 1	Gas Turbine	Gas/Oil #6	30.000	40.000	1974
Unit 2	Gas Turbine	Gas/Oil #6	49.900	49.900	2002
Lake Zumbro Hydroelectric Wabasha County, MN					
Units 1 and 2	Hydro	Water	1.300	1.000	1984
Silver Lake Steam Plant Olmsted County, MN					
Unit 1	Steam	Coal/Gas	9.000	9.000	1949
Unit 2	Steam	Coal/Gas	14.000	14.000	1953
Unit 3	Steam	Coal/Gas	24.000	24.000	1962
Unit 4	Steam	Coal/Gas	61.000	61.000	1969
Roseau Municipal Water & Light					
Roseau Municipal Power Plant Roseau County, MN					
Unit 1	Int Comb	Oil #2	1.400	1.400	1956
Unit 2	Int Comb	Oil #2	1.136	1.136	1949
Unit 3	Int Comb	Oil #2	0.550	0.550	1946
Sleepy Eye Public Utilities					
Sleepy Eye Power Plant Brown County, MN					
Unit 1	Int Comb	Oil #2	1.800	1.800	1999
Unit 2	Int Comb	Oil #2	1.800	1.800	2001
Unit 3	Int Comb	Oil #2	1.500	1.500	1961
Unit 4	Int Comb	Oil #2	1.800	1.800	1995
Unit 5	Int Comb	Oil #2	1.800	1.800	1996

TABLE 9

ELECTRIC GENERATING PLANTS SERVING MINNESOTA DURING CALENDAR YEAR 2002

Plant Profile					
Unit Type	Energy Source	Capacity		Year Installed	
		Summer (MW)	Winter (MW)		
Southern Minnesota Municipal Power Agency					
Blooming Prairie Plant					
Steele County, MN					
Unit 1	Int Comb	Oil #2/Gas	1.300	1.300	1957
Unit 2	Int Comb	Oil #2/Gas	1.300	1.300	1975
Unit 3	Int Comb	Oil #2/Gas	0.400	0.400	1975
Mora Municipal Plant					
Kanabec County, MN					
Unit 2	Int Comb	Oil #2/Gas	1.300	1.300	1960
Unit 5	Int Comb	Oil #2/Gas	5.600	5.600	1972
Unit 6	Int Comb	Oil #2/Gas	6.100	6.100	1975
New Prague Power Plant					
LeSueur County, MN					
Unit 2	Int Comb	Gas/Oil #2	5.000	5.000	1975
Unit 3	Int Comb	Gas/Oil #2	2.700	2.700	1963
Unit 4	Int Comb	Gas/Oil #2	3.800	3.800	1967
Unit 6	Int Comb	Gas/Oil #2	6.500	6.500	1981
North Branch Power Plant					
Chisago County, MN					
Unit 1	Int Comb	Gas/Oil #2	0.800	0.800	1960
Unit 2	Int Comb	Gas/Oil #2	1.200	1.200	1970
Owatonna Downtown					
Steele County, MN					
Unit 5	Steam	Gas			1957
Unit 6	Steam	Gas	21.400	21.400	1969
Owatonna West Sub.					
Steele County, MN					
Unit 7	Gas Turbine	Gas	15.700	20.700	1982
Preston Municipal Plant					
Fillmore County, MN					
Unit 4	Int Comb	Oil #2/Gas	0.800	0.800	1949
Unit 5	Int Comb	Oil #2/Gas	1.100	1.100	1954
Unit 6	Int Comb	Oil #2/Gas	2.300	2.300	1974
Redwood Falls Diesel Plant					
Redwood County, MN					
Unit 1	Int Comb	Oil #2/Gas	2.300	2.300	1970
Unit 2	Int Comb	Oil #2/Gas	6.100	6.100	1974
Sherburne Steam Plant (41% share)					
Sherburne County, MN					
Unit 3	Steam	Coal/Oil #2	362.400	364.600	1988

TABLE 9

ELECTRIC GENERATING PLANTS SERVING MINNESOTA DURING CALENDAR YEAR 2002

Plant Profile					
	Unit Type	Energy Source	Capacity		Year Installed
			Summer (MW)	Winter (MW)	
Spring Valley Plant Fillmore County, MN					
Unit 1	Int Comb	Gas/Oil #2	0.900	0.900	1952
Unit 2	Int Comb	Gas/Oil #2	1.200	1.200	1952
Unit 3	Int Comb	Gas/Oil #2	2.100	2.100	1960
Springfield Public Utilities Commission					
Springfield Municipal Plant Brown County, MN					
Unit 5	Int Comb	Diesel	1.825	1.825	1994
Unit 6	Int Comb	Diesel	1.825	1.825	1996
Unit 7	Int Comb	Diesel	1.825	1.825	1998
Unit 8	Int Comb	Diesel	1.825	1.825	1998
Unit 9	Int Comb	Diesel	1.825	1.825	2001
Steele Waseca Cooperative Electric					
Windmills Co-Generators Steele County, MN					
Unit 1	Wind	Wind	0.004	0.004	1984
Unit 2	Wind	Wind	0.018	0.018	1984
Unit 3	Wind	Wind	0.025	0.025	1996
Unit 4	Wind	Wind	0.035	0.035	1997
Unit 5	Wind	Wind	0.039	0.039	2002
Unit 6	Wind	Wind	0.039	0.039	2002
Unit 7	Wind	Wind	0.039	0.039	2002
Unit 8	Wind	Wind	0.020	0.020	2002
Unit 9	Wind	Wind	0.039	0.039	2002
Unit 10	Wind	Wind	0.039	0.039	2002
Thief River Falls Municipal Utility					
Thief River Falls Municipal Power Plant (HC) Pennington County, MN					
Unit 1	Hydro	Water	0.250	0.250	1927
Unit 2	Hydro	Water	0.300	0.300	1927
Thief River Falls Municipal Power Plant (IC) Pennington County, MN					
Unit 1	Int Comb	Oil #2	1.300	1.300	1956
Unit 2	Int Comb	Oil #2	1.100	1.100	1953
Unit 3	Int Comb	Oil #2	1.270	1.270	2000
Unit 4	Int Comb	Oil #2	2.000	2.000	1946

TABLE 9

ELECTRIC GENERATING PLANTS SERVING MINNESOTA DURING CALENDAR YEAR 2002

Plant Profile					
Unit Type	Energy Source	Capacity		Year Installed	
		Summer (MW)	Winter (MW)		
Truman Public Utilities					
Truman Municipal Plant Martin County, MN					
Unit 1	Int Comb	Gas/Diesel	0.200	0.200	1938
Unit 2	Int Comb	Gas/Diesel	0.200	0.200	1938
Unit 3	Int Comb	Gas/Diesel	2.300	2.300	1975
Unit 4	Int Comb	Gas/Diesel	0.700	0.700	1954
Unit 5	Int Comb	Gas/Diesel	0.700	0.700	1960
Unit 6	Int Comb	Gas/Diesel	1.850	1.850	1998
Two Harbors Water & Light					
Two Harbors Plant Lake County, MN					
Unit 1	Int Comb	Diesel	2.000	2.000	1971
Virginia Public Utilities					
Virginia Power Plant St. Louis County, MN					
Unit 1	Steam	Coal/Gas	4.000	4.000	1947
Unit 5	Steam	Coal/Gas	8.300	8.300	1953
Unit 6	Steam	Coal/Gas	18.500	18.500	1971
Warren, City of					
Warren Plant Marshall County, MN					
Unit 1	Int Comb	Diesel	0.500	0.575	1953
Unit 2	Int Comb	Diesel	1.000	1.150	1943
Unit 3	Int Comb	Diesel	0.200	0.300	1941
Unit 4	Int Comb	Diesel	0.100	0.200	1935
Wells Public Utilities					
Wells Plant Fairbault County, MN					
Unit 1	Int Comb	Oil #2/Gas	1.200	1.200	1953
Unit 2	Int Comb	Oil #2/Gas	1.200	1.200	1957
Unit 3	Int Comb	Oil #2/Gas	1.000	1.000	1950
Unit 4	Int Comb	Oil #2/Gas	1.800	1.800	1966
Unit 5	Int Comb	Oil #2/Gas	2.000	2.000	1975

TABLE 9

ELECTRIC GENERATING PLANTS SERVING MINNESOTA DURING CALENDAR YEAR 2002

Plant Profile					
Unit Type	Energy Source	Capacity		Year Installed	
		Summer (MW)	Winter (MW)		
Willmar Municipal Utilities					
Willmar Plant Kandiyohi County, MN					
Unit 1	Steam	Coal/Gas	4.000	4.000	1947
Unit 2	Steam	Coal/Gas	7.000	7.000	1952
Unit 3	Steam	Coal/Gas	15.000	8.000	1959
Unit 4	Int Comb	Oil #2	12.000	12.000	2000
Windom Municipal Utilities					
Windom Gas Turbine Cottonwood County, MN					
Unit 1	Gas Turbine	Oil #2	2.500	3.000	1980
Unit 2	Int Comb	Oil #2	1.700	1.800	2001
Unit 3	Int Comb	Oil #2	1.700	1.800	2001
Unit 4	Int Comb	Oil #2	1.700	1.800	2001
Xcel Energy					
Allen S. King Washington County, MN					
Unit 1	Steam	Coal/Wood/Gas	571.000	585.00 0	1968
Alliant Tech Systems Hennepin County, MN					
Unit 1 & 2	Gas Turbine	Oil #2	1.600	1.600	1993
Angus Anson Minnehaha County, SD					
Unit 2	Gas Turbine	Gas/Oil #2	112.500	128.50 0	1994
Unit 3	Gas Turbine	Gas/Oil #2	116.000	128.50 0	1994
Apple River Hydroelectric St. Croix County, WI					
Unit 1	Hydro	Water	0.800	0.800	1900
Unit 2	Hydro	Water	1.100	1.100	1900
Unit 3	Hydro	Water	1.100	1.100	1900
Bayfront Steam Ashland County, WI					
Unit 3	Steam	Wood/Coal/Gas	23.800	23.800	1949
Unit 4	Steam	Wood/Coal/Gas	21.600	23.100	1952
Unit 5	Steam	Wood/Coal/Gas	29.300	29.800	1957

TABLE 9

ELECTRIC GENERATING PLANTS SERVING MINNESOTA DURING CALENDAR YEAR 2002

Plant Profile					
	Unit Type	Energy Source	Capacity		Year Installed
			Summer (MW)	Winter (MW)	
Big Falls Hydroelectric Rusk County, WI					
Unit 1	Hydro	Water	2.391	2.391	1922
Unit 2	Hydro	Water	2.391	2.391	1922
Unit 3	Hydro	Water	2.591	2.591	1925
Black Dog Steam Dakota County, MN					
Units 2 and 5	Steam	Coal/Gas	75.700	77.500	1954 and 2002
Unit 3	Steam	Coal/Gas	115.100	96.100	1955
Unit 4	Steam	Coal/Gas	174.700	175.100	1960
Blue Lake Gas Turbine Scott County, MN					
Unit 1	Gas Turbine	Oil #2	43.300	57.400	1974
Unit 2	Gas Turbine	Oil #2	42.000	56.100	1974
Unit 3	Gas Turbine	Oil #2	41.400	55.600	1974
Unit 4	Gas Turbine	Oil #2	49.000	63.500	1974
Cedar Falls Hydroelectric Dunn County, WI					
Unit 1	Hydro	Water	2.300	2.300	1910
Unit 2	Hydro	Water	2.200	2.200	1911
Unit 3	Hydro	Water	2.300	2.300	1915
Chippewa Falls Hydroelectric Chippewa County, WI					
Unit 1	Hydro	Water	3.600	3.600	1928
Unit 2	Hydro	Water	4.010	4.010	1928
Unit 3	Hydro	Water	3.870	3.870	1928
Unit 4	Hydro	Water	3.870	3.870	1928
Unit 5	Hydro	Water	3.880	3.880	1928
Unit 6	Hydro	Water	4.010	4.010	1928
Cornell Hydroelectric Chippewa County, WI					
Unit 1	Hydro	Water	10.110	10.110	1976
Unit 2	Hydro	Water	10.110	10.110	1976
Unit 3	Hydro	Water	10.110	10.110	1976
Unit 4	Hydro	Water	0.730	0.730	1976

TABLE 9

ELECTRIC GENERATING PLANTS SERVING MINNESOTA DURING CALENDAR YEAR 2002

Plant Profile					
Unit Type	Energy Source	Capacity		Year Installed	
		Summer (MW)	Winter (MW)		
Dells Hydroelectric Eau Claire County, WI					
Unit 1	Hydro	Water	2.500	2.500	1923
Unit 2	Hydro	Water	1.300	1.300	1924
Unit 3	Hydro	Water	1.300	1.300	1930
Unit 4	Hydro	Water	1.300	1.300	1930
Unit 5	Hydro	Water	1.300	1.300	1930
Unit 6	Hydro	Water	0.700	0.700	1916
Unit 7	Hydro	Water	0.700	0.700	1907
Flambeau Price County, WI					
Unit 1	Gas Turbine	Gas/Oil #2	14.280	19.500	1969
French Island Gas Turbine La Crosse County, WI					
Unit 3	Gas Turbine	Oil #2	74.710	91.620	1974
Unit 4	Gas Turbine	Oil #2	73.640	91.160	1974
French Island Steam Plant La Crosse County, WI					
Unit 1	Steam	Wood/Gas/RDF	15.000	15.000	1969
Unit 2	Steam	Wood/Gas/RDF	14.000	15.000	1969
Granite City Gas Turbine Sherburne County, MN					
Unit 1	Gas Turbine	Gas/Oil #2	14.760	19.770	1969
Unit 2	Gas Turbine	Gas/Oil #2	15.800	19.800	1969
Unit 3	Gas Turbine	Gas/Oil #2	15.740	19.800	1969
Unit 4	Gas Turbine	Gas/Oil #2	15.830	19.800	1969
Hayward Hydroelectric Sawyer County, WI					
Unit 1	Hydro	Water	0.200	0.200	1925
Hennepin Island Hydroelectric Hennepin County, MN					
Unit 1	Hydro	Water	2.400	2.400	1954
Unit 2	Hydro	Water	2.350	2.350	1954
Unit 3	Hydro	Water	2.300	2.300	1954
Unit 4	Hydro	Water	2.300	2.300	1954
Unit 5	Hydro	Water	2.700	2.700	1955
High Bridge Steam Ramsey County, MN					
Unit 5	Steam	Coal/Gas	99.000	99.000	1956
Unit 6	Steam	Coal/Gas	172.000	172.80	1959
				0	

TABLE 9

ELECTRIC GENERATING PLANTS SERVING MINNESOTA DURING CALENDAR YEAR 2002

Plant Profile					
Unit Type	Energy Source	Capacity		Year Installed	
		Summer (MW)	Winter (MW)		
Holcombe Hydroelectric Chippewa County, WI					
Unit 1	Hydro	Water	11.700	11.700	1950
Unit 2	Hydro	Water	11.700	11.700	1950
Unit 3	Hydro	Water	11.700	11.700	1950
Inver Hills Gas Turbine Dakota County, MN					
Unit 1	Gas Turbine	Gas/Oil #2	59.500	71.400	1972
Unit 2	Gas Turbine	Gas/Oil #2	56.400	71.400	1972
Unit 3	Gas Turbine	Gas/Oil #2	57.400	71.400	1972
Unit 4	Gas Turbine	Gas/Oil #2	58.500	71.400	1972
Unit 5	Gas Turbine	Gas/Oil #2	59.500	71.400	1972
Unit 6	Gas Turbine	Gas/Oil #2	59.200	71.400	1972
Unit 7	Int Comb	Oil #1	1.800	1.800	1994
Unit 8	Int Comb	Oil #1	1.800	1.800	1994
Jim Falls Hydroelectric Chippewa County, WI					
Unit 1	Hydro	Water	28.000	28.000	1988
Unit 2	Hydro	Water	28.300	28.300	1988
Unit 3	Hydro	Water	0.500	0.000	1986
Key City Gas Turbine Blue Earth County, MN					
Unit 1	Gas Turbine	Gas/Oil #2	16.000	19.300	1969
Unit 2	Gas Turbine	Gas/Oil #2	15.800	19.100	1969
Unit 3	Gas Turbine	Gas/Oil #2	16.600	19.500	1969
Unit 4	Gas Turbine	Gas/Oil #2	17.300	19.500	1969
Ladysmith Hydroelectric Rusk County, WI					
Unit 1	Hydro	Water	0.900	0.900	1940
Unit 2	Hydro	Water	0.806	0.806	1940
Unit 3	Hydro	Water	1.100	1.100	1983
Menomonie Hydroelectric Dunn County, WI					
Unit 1	Hydro	Water	2.600	2.600	1958
Unit 2	Hydro	Water	2.500	2.500	1958
Minnesota Valley Steam Chippewa County, MN					
Unit 3	Steam	Coal/Gas/Oil #2	44.500	46.400	1953
Monticello Nuclear Wright County, MN					
Unit 1	Nuclear	Uranium	571.700	597.200	1971

TABLE 9

ELECTRIC GENERATING PLANTS SERVING MINNESOTA DURING CALENDAR YEAR 2002

Plant Profile					
Unit Type	Energy Source	Capacity		Year Installed	
		Summer (MW)	Winter (MW)		
Pathfinder Minnehaha County, SD					
Unit 1	Steam	Gas	61.000	0.000	1969
Prairie Island Nuclear Goodhue County, MN					
Unit 1	Nuclear	Uranium	524.000	547.000	1973
Unit 2	Nuclear	Uranium	523.000	545.000	1974
Red Wing Steam Goodhue County, MN					
Unit 1	Steam	RDF/Gas	11.100	11.900	1949
Unit 2	Steam	RDF/Gas	9.900	10.700	1949
Riverdale Hydroelectric St. Croix County, WI					
Unit 1	Hydro	Water	0.316	0.316	1905
Unit 2	Hydro	Water	0.276	0.276	1905
Riverside Steam Hennepin County, MN					
Unit 7	Steam	Coal/Gas/Oil #2	153.800	154.500	1987
Unit 8	Steam	Coal/Oil #2	239.600	239.900	1964
Saxon Falls Hydroelectric Jackson County, WI					
Unit 1	Hydro	Water	0.700	0.500	1913
Unit 2	Hydro	Water	0.799	0.649	1913
Sherburne County Steam (59% share of Unit 3) Sherburne County, MN					
Unit 1	Steam	Coal/Oil #2	715.000	720.000	1976
Unit 2	Steam	Coal/Oil #2	706.000	710.100	1977
Unit 3	Steam	Coal/Oil #2	884.000	890.000	1987
St. Croix Falls Hydroelectric Polk County, WI					
Unit 1	Hydro	Water	3.300	3.300	1905
Unit 2	Hydro	Water	3.000	3.000	1905
Unit 3	Hydro	Water	3.000	3.000	1905
Unit 4	Hydro	Water	3.000	3.000	1905
Unit 5	Hydro	Water	3.000	3.000	1910
Unit 6	Hydro	Water	3.100	3.100	1910
Unit 7	Hydro	Water	3.200	3.200	1923
Unit 8	Hydro	Water	3.000	3.000	1923

TABLE 9

ELECTRIC GENERATING PLANTS SERVING MINNESOTA DURING CALENDAR YEAR 2002

Plant Profile					
	Unit Type	Energy Source	Capacity		Year Installed
			Summer (MW)	Winter (MW)	
Superior Falls Hydroelectric Gogebic County, MI					
Unit 1	Hydro	Water	0.900	0.700	1917
Unit 2	Hydro	Water	0.898	0.698	1917
Thornapple Hydroelectric Rusk County, WI					
Unit 1	Hydro	Water	0.780	0.780	1929
Unit 2	Hydro	Water	0.792	0.792	1929
Trego Hydroelectric Washburn County, WI					
Unit 1	Hydro	Water	0.900	0.900	1927
Unit 2	Hydro	Water	0.517	0.517	1927
United Health Care Hennepin County, MN					
Unit 1&2	Gas Turbine	Oil #2	3.700	3.700	1993
United Hospital Ramsey County, MN					
Unit 1	Gas Turbine	Oil #2	4.770	4.770	1992
West Faribault Jet Engine Rice County, MN					
Unit 2	Gas Turbine	Gas	16.600	0.000	1965
Unit 3	Gas Turbine	Gas	14.600	0.000	1965
Wheaton Chippewa County, WI					
Unit 1	Gas Turbine	Oil #2/Gas	57.490	71.400	1973
Unit 2	Gas Turbine	Oil #2/Gas	66.090	81.130	1973
Unit 3	Gas Turbine	Oil #2/Gas	57.230	71.400	1973
Unit 4	Gas Turbine	Oil #2/Gas	56.910	71.400	1973
Unit 5	Gas Turbine	Oil #2/Gas	60.730	78.780	1973
Unit 6	Gas Turbine	Oil #2/Gas	61.350	81.210	1973
White River Hydroelectric Ashland County, WI					
Unit 1	Hydro	Water	0.400	0.300	1907
Unit 2	Hydro	Water	0.400	0.300	1907
Wilmarth Steam Blue Earth County, MN					
Unit 1	Steam	RDF/Gas	10.900	11.500	1948
Unit 2	Steam	RDF/Gas	11.200	11.800	1951

TABLE 9

**ELECTRIC GENERATING PLANTS SERVING MINNESOTA
DURING CALENDAR YEAR 2002**

Plant Profile					
Unit Type	Energy Source	Capacity		Year Installed	
		Summer (MW)	Winter (MW)		
Wissota Hydroelectric Chippewa County, WI					
Unit 1	Hydro	Water	6.000	6.000	1917
Unit 2	Hydro	Water	6.200	6.200	1917
Unit 3	Hydro	Water	6.100	6.100	1917
Unit 4	Hydro	Water	6.100	6.100	1917
Unit 5	Hydro	Water	5.900	5.900	1917
Unit 6	Hydro	Water	5.900	5.900	1917

TABLE 10

NET GENERATION AND FUEL CONSUMPTION FOR ELECTRIC GENERATING PLANTS PRODUCING POWER FOR MINNESOTA DURING 2002

	Net MWh Generation*	Fuel Used					Other*** (Tons)
		Coal (Tons)	Nat Gas (MCF)	Fuel Oil #2** (Gallons)	Fuel Oil #6 (Gallons)	Nuclear (Mbtu)	
Aitkin Public Utilities Commission							
Aitkin Power Plant Aitkin County, MN							
Unit 5	8			560			
Unit 6	13			1,062			
Alexandria Light & Power							
Alexandria Power Plant Douglas County, MN							
Unit 1	5			320			
Unit 2	54		291	2,217			
Unit 3	41		300	2,688			
Alliant Energy-Interstate Power Company							
Agency Street Gas Turbine Des Moines County, IA							
Unit 1	624		13,018	2,856			
Unit 2	553		11,537	2,520			
Unit 3	853		17,796	3,906			
Unit 4	1,083		22,595	4,956			
Ames Diesel Story County, IA							
Units 1 and 2	17			84			
Anamosa Hydro Jones County, IA							
Unit 1	1,014						
Burlington Gas Turbine Des Moines County, IA							
Unit 1	950		18,109				
Unit 2	1,330		25,352				
Unit 3	1,360		25,924				
Unit 4	1,250		23,827				

TABLE 10

NET GENERATION AND FUEL CONSUMPTION FOR ELECTRIC GENERATING PLANTS PRODUCING
POWER FOR MINNESOTA DURING 2002

	Fuel Used						
	Net MWh	Coal	Nat Gas	Fuel Oil #2**	Fuel Oil #6	Nuclear	Other***
	Generation*	(Tons)	(MCF)	(Gallons)	(Gallons)	(Mbtu)	(Tons)
Burlington Steam Des Moines County, IA Unit 1	1,221,100	778,170	30,346				
Centerville Diesel Appanoose County, IA Units 1 - 3	-49			378			
Centerville Gas Turbine Appanoose County, IA Units 1 and 2	740			158,004			
Duane Arnold Energy Center (70% share) Benton County, IA Unit 1^^	3,201,770					34,000,000	
Dubuque Internal Combustion Dubuque County, IA Unit 1	-36			1,890			
Unit 2	-37			1,890			
Dubuque Steam Dubuque County, IA Unit 2	190		8,629				
Unit 3	166,270	98,268	24,467	7,308			
Unit 4	171,022	101,076	25,166	7,476			
Fox Lake Gas Turbine Martin County, MN Unit 1	412			62,874			

^^Nuclear Mbtu is estimated.

TABLE 10

NET GENERATION AND FUEL CONSUMPTION FOR ELECTRIC GENERATING PLANTS PRODUCING
POWER FOR MINNESOTA DURING 2002

	Fuel Used						
	Net MWh	Coal	Nat Gas	Fuel Oil #2**	Fuel Oil #6	Nuclear	Other***
	Generation*	(Tons)	(MCF)	(Gallons)	(Gallons)	(Mbtu)	(Tons)
Fox Lake Steam Martin County, MN							
Unit 1	3,637		43,400				
Unit 2	3,413		40,727				
Unit 3	88,082		1,051,068		201,516		
Grinnell Gas Turbine Poweshiek County, IA							
Unit 1	419		18,989				
Hills Internal Combustion Rock County, MN							
Unit 1	-95			294			
Unit 2	-91			294			
Iowa Falls Hydro Hardin County, IA							
Unit 1	127						
Lansing Internal Combustion Allamakee County, IA							
Unit 1	4			336			
Unit 2	5			420			
Lansing Steam Allamakee County, IA							
Unit 1	-339	759			24,192		
Unit 2	848	145			19,488		
Unit 3	147,285	65,149			140,868		
Unit 4	1,110,015	824,734			514,584		
Lime Creek Cerro Gordo County, IA							
Unit 1	2,260			271,740			
Unit 2	2,881			346,416			

TABLE 10

NET GENERATION AND FUEL CONSUMPTION FOR ELECTRIC GENERATING PLANTS PRODUCING POWER FOR MINNESOTA DURING 2002

	Fuel Used						
	Net MWh	Coal	Nat Gas	Fuel Oil #2**	Fuel Oil #6	Nuclear	Other***
	Generation*	(Tons)	(MCF)	(Gallons)	(Gallons)	(Mbtu)	(Tons)
Louisa Station No. 1 (4% share)							
Louisa County, IA							
Unit 1	191,676	115,518	3,361	42			
M.L. Kapp Steam							
Clinton County, IA							
Unit 1	1,287		27,820				
Unit 2	1,145,000	690,415	27,755				
Maquoketa Hydro							
Jackson County, IA							
Units 1 and 2	5,643						
Marshalltown Gas Turbine							
Marshall County, IA							
Unit 1	2,055			212,184			
Unit 2	3,765			388,752			
Unit 3	6,030			622,692			
Montgomery Gas Turbine							
LeSueur County, MN							
Unit 1	153			33,432			
Neal No. 3							
Woodbury County, IA							
Unit 1	803,731	499,683	21,484				
Neal No. 4 (22% share)							
Woodbury County, IA							
Unit 4	1,005,376	617,082		51,282			
Ottumwa Generating Station							
Wappello County, IA							
Unit 1	2,141,726	1,313,529		189,882			

TABLE 10

NET GENERATION AND FUEL CONSUMPTION FOR ELECTRIC GENERATING PLANTS PRODUCING POWER FOR MINNESOTA DURING 2002

	Fuel Used						
	Net MWh	Coal	Nat Gas	Fuel Oil #2**	Fuel Oil #6	Nuclear	Other***
	Generation*	(Tons)	(MCF)	(Gallons)	(Gallons)	(Mbtu)	(Tons)
Prairie Creek Linn County, IA							
Unit 1A	66,966	67,585		1,134			
Unit 2	3,030		143,923	42			
Unit 3	123,221	111,439		2,100			
Unit 4	799,272	397,784		13,566			246,983
Red Cedar Linn County, IA							
Unit 1	93,888		608,795				
Sixth Street Station Linn County, IA							
Unit 2	17,840	14,141	86,254				929
Unit 4	51,674	40,960	249,836				2,692
Unit 7	60,959	48,320	294,728				3,176
Unit 8	71,861	56,962	347,438				3,744
Sutherland Station Marshall County, IA							
Unit 1	191,895	136,205	157,230				
Unit 2	188,174	138,923	154,181				
Unit 3	560,434	304,456	459,194				
Austin Utilities							
Downtown Plant Mower County, MN							
Units 1 - 4	2,438		34,974				
Unit 5	2,968		10,584				
Northeast Plant Mower County, MN							
Unit 1	126,721	62,545	112,939				

TABLE 10

NET GENERATION AND FUEL CONSUMPTION FOR ELECTRIC GENERATING PLANTS PRODUCING POWER FOR MINNESOTA DURING 2002

	Net MWh Generation*	Fuel Used					Other*** (Tons)
		Coal (Tons)	Nat Gas (MCF)	Fuel Oil #2** (Gallons)	Fuel Oil #6 (Gallons)	Nuclear (Mbtu)	
Baudette, City of							
Baudette Power Plant							
Lake of the Woods County, MN							
Unit 2	0			0			
Unit 3	0			0			
Unit 4	0			0			
Unit 5	0			0			
Benson Municipal Utilities							
Benson Municipal Utilities							
Swift County, MN							
Unit 5	26			2,080			
Unit 6	28			2,404			
Unit 7	8			512			
Unit 8	8			511			
Unit 9	10			634			
Unit 10	10			654			
Unit 11	9			653			
Blue Earth Light & Water							
Blue Earth City Plant							
Faribault County, MN							
Unit 1	10		11	720			
Unit 3	5			305			
Unit 4	5			297			
Unit 5	4			249			
Unit 6	6			409			

TABLE 10

NET GENERATION AND FUEL CONSUMPTION FOR ELECTRIC GENERATING PLANTS PRODUCING POWER FOR MINNESOTA DURING 2002

	Fuel Used						
	Net MWh	Coal	Nat Gas	Fuel Oil #2**	Fuel Oil #6	Nuclear	Other***
	Generation*	(Tons)	(MCF)	(Gallons)	(Gallons)	(Mbtu)	(Tons)
Dairyland Power Cooperative							
Alma Station							
Buffalo County, WI							
Unit 1	37,964	27,762		17,570			
Unit 2	39,925	24,893		15,750			
Unit 3	50,575	23,677		14,980			
Unit 4	166,898	140,698		10,100			
Unit 5	348,407	185,548		4,930			
Elk Mound Combustion Turbine							
Rusk County, WI							
Unit 1	10,126		112,503				
Unit 2	9,963		84,483				
Flambeau Hydroelectric							
Rusk County, WI							
Unit 1	23,544						
Unit 2	22,159						
Unit 3	14,807						
Genoa 3							
Vernon County, WI							
Unit 1	2,100,862	918,083		297,000			
JP Madgett							
Buffalo County, WI							
Unit 1	2,492,260	1,425,492		251,000			

TABLE 10

NET GENERATION AND FUEL CONSUMPTION FOR ELECTRIC GENERATING PLANTS PRODUCING POWER FOR MINNESOTA DURING 2002

	Fuel Used						
	Net MWh	Coal	Nat Gas	Fuel Oil #2**	Fuel Oil #6	Nuclear	Other***
	Generation*	(Tons)	(MCF)	(Gallons)	(Gallons)	(Mbtu)	(Tons)
Delano Municipal Utilities							
Delano Municipal Plant							
Wright County, MN							
Unit 1	3			189			
Unit 3	6			415			
Unit 4	7			300			
Unit 5	6			440			
Unit 6	4			211			
Unit 7	14			1,105			
Unit 8	2			193			
Unit 9	87			12,563			
Detroit Lakes Public Utilities							
Jet Plant							
Becker County, MN							
Unit 1	0			2,757			
Elk River Municipal Utilities							
Elk River Mun. Utilities Diesel Plant							
Sherburne County, MN							
Units 1 - 4	0						
Fairfax, City of							
Fairfax Municipal Power Plant							
Renville County, MN							
Units 1, 2 & 4	2			170			

TABLE 10

NET GENERATION AND FUEL CONSUMPTION FOR ELECTRIC GENERATING PLANTS PRODUCING POWER FOR MINNESOTA DURING 2002

	Net MWh Generation*	Fuel Used					Other*** (Tons)
		Coal (Tons)	Nat Gas (MCF)	Fuel Oil #2** (Gallons)	Fuel Oil #6 (Gallons)	Nuclear (Mbtu)	
Fairmont Public Utilities							
Fairmont Power Plant Martin County, MN							
Unit 3	203		4,150				
Unit 4	211		4,286				
Unit 5	615		12,510				
Unit 6	844		999	1,279			
Unit 7	1,330		877	1,410			
Glencoe Light and Power Commission							
Glencoe Municipal Electric Plant McLeod County, MN							
Units 5 - 12	1,637		4,131	86,584			
Grand Marais Utilities							
Grand Marais Power Plant Cook County, MN							
Unit 2	0			180			
Unit 5	0			130			
Unit 6	0			140			
Granite Falls Municipal Utilities							
Granite Falls Municipal Hydroelectric Yellow Medicine County, MN							
Unit 1	383						
Unit 2	945						
Unit 3	2,693						

TABLE 10

NET GENERATION AND FUEL CONSUMPTION FOR ELECTRIC GENERATING PLANTS PRODUCING POWER FOR MINNESOTA DURING 2002

	Net MWh Generation*	Fuel Used					Other*** (Tons)
		Coal (Tons)	Nat Gas (MCF)	Fuel Oil #2** (Gallons)	Fuel Oil #6 (Gallons)	Nuclear (Mbtu)	
Great River Energy							
Cambridge Gas Turbine Plant Isanti County, MN Unit 1	384			40,370			
Coal Creek Diesel McLean County, ND Unit 1	0						
Coal Creek Station McLean County, ND Units 1 and 2	8,559,096	7,627,209			334,000		
Elk River Station Sherburne County, MN Units 1 - 3	172,115		75,709	7,600			285,483
Lakefield Junction Martin County, MN Units 1 - 6	188,901		1,702,777	130,130			
Maple Lake Wright County, MN Unit 1	419			47,260			
Pleasant Valley Station Mower County, MN Units 11 - 13	117,680		1,336,400	565,090			
Rock Lake Pine County, MN Unit 1	398			40,570			
St. Bonifacious Power Plant Carver County, MN Unit 1	1,706			152,970			

TABLE 10

NET GENERATION AND FUEL CONSUMPTION FOR ELECTRIC GENERATING PLANTS PRODUCING POWER FOR MINNESOTA DURING 2002

	Fuel Used						
	Net MWh	Coal	Nat Gas	Fuel Oil #2**	Fuel Oil #6	Nuclear	Other***
	Generation*	(Tons)	(MCF)	(Gallons)	(Gallons)	(Mbtu)	(Tons)
Stanton Station Steam Plant Mercer County, ND Unit 1	1,399,737	1,147,121		63,580			
Halstad Municipal Utilities							
Halstad Diesel Plant Norman County, MN Unit 1	0			0			
Unit 2	0			0			
Unit 3	0			0			
Hastings Public Utilities Commission							
Hastings Hydroelectric Facility Dakota County, MN Unit 1	3,535						
Unit 2	0						
Hawley Public Utilities							
Hawley Plant Clay County, MN Unit 1	0			37			
Unit 2	1			260			
Unit 3	0			37			
Unit 4	1			104			
Unit 5	1			105			

TABLE 10

NET GENERATION AND FUEL CONSUMPTION FOR ELECTRIC GENERATING PLANTS PRODUCING POWER FOR MINNESOTA DURING 2002

	Net MWh Generation*	Fuel Used					Other*** (Tons)
		Coal (Tons)	Nat Gas (MCF)	Fuel Oil #2** (Gallons)	Fuel Oil #6 (Gallons)	Nuclear (Mbtu)	
Hibbing Public Utilities							
Hibbing Public Utilities Plant							
St. Louis County, MN							
Unit 3	2,586	6,590					
Unit 5	6,091	6,178					
Unit 6	11,982	36,972					
Hutchinson Utilities Commission							
Hutchinson Municipal Plant No. 1							
McLeod County, MN							
Unit 2	0			87			
Unit 3	483		4,003	9,452			
Unit 4	1,078		10,491	13,049			
Unit 5	0			83			
Unit 6	0			18			
Unit 7	544		4,496	9,605			
Unit 8	130		2,137				
Hutchinson Municipal Plant No. 2							
McLeod County, MN							
Unit 1G	28,180		303,033				
Unit 1S	5,850						
Unit 9	2,644		43,066	271			

TABLE 10

NET GENERATION AND FUEL CONSUMPTION FOR ELECTRIC GENERATING PLANTS PRODUCING POWER FOR MINNESOTA DURING 2002

	Net MWh Generation*	Fuel Used					Other*** (Tons)
		Coal (Tons)	Nat Gas (MCF)	Fuel Oil #2** (Gallons)	Fuel Oil #6 (Gallons)	Nuclear (Mbtu)	
Janesville Municipal Utilities							
Janesville Municipal Plant Waseca County, MN							
Unit 1	1		0	0			
Unit 2	1		0	0			
Unit 3	1		0	0			
Unit 4	2			0			
Kenyon Municipal Utilities							
Kenyon Municipal Plant Goodhue County, MN							
Unit 5	6			1,101			
Unit 6	4			902			
Unit 7	4			575			
Lake Crystal Municipal Utilities							
Lake Crystal Plant Blue Earth County, MN							
Unit 1	5		0	520			
Unit 3	17		0	1,395			
Unit 4	20		0	1,570			
Unit 5	31		0	2,200			

TABLE 10

NET GENERATION AND FUEL CONSUMPTION FOR ELECTRIC GENERATING PLANTS PRODUCING POWER FOR MINNESOTA DURING 2002

	Net MWh Generation*	Fuel Used					Other*** (Tons)
		Coal (Tons)	Nat Gas (MCF)	Fuel Oil #2** (Gallons)	Fuel Oil #6 (Gallons)	Nuclear (Mbtu)	
Lakefield Public Utilities							
Lakefield Power Plant Jackson County, MN							
Unit 1	0			0			
Unit 2	0			0			
Unit 3	0			0			
Unit 4	0			0			
Unit 5	0			0			
Lanesboro Public Utilities							
Lanesboro Power Plant - Diesel Fillmore County, MN							
Units 1 & 2	23			2,686			
Lanesboro Power Plant - Hydro Fillmore County, MN							
Unit 1	23						
Litchfield Public Utilities							
Litchfield Power Plant Meeker County, MN							
Unit 1	2		186	2,303			
Unit 2	2		73	1,005			

TABLE 10

NET GENERATION AND FUEL CONSUMPTION FOR ELECTRIC GENERATING PLANTS PRODUCING POWER FOR MINNESOTA DURING 2002

	Net MWh Generation*	Fuel Used					Other*** (Tons)
		Coal (Tons)	Nat Gas (MCF)	Fuel Oil #2** (Gallons)	Fuel Oil #6 (Gallons)	Nuclear (Mbtu)	
Madelia Municipal Light & Power							
Madelia Municipal Plant Watonwan County, MN							
Unit 1	77		616	1,704			
Unit 2	2		0	320			
Unit 3	1		0	84			
Unit 4	58		471	1,671			
Unit 5	32		289	1,389			
Marshall Municipal Utilities							
Marshal Power Plant Lyon County, MN							
Unit 6	90			10,244			
Melrose Public Utilities							
Melrose Power Plant Stearns County, MN							
Unit 1	80			890			
Unit 2	109			1,220			
Unit 3	306			3,417			
Unit 4	312			3,460			
Minnesota Power							
Blanchard Hydroelectric Station Morrison County, MN							
Unit 1	43,271						
Unit 2	43,858						
Unit 3	5,146						

TABLE 10

NET GENERATION AND FUEL CONSUMPTION FOR ELECTRIC GENERATING PLANTS PRODUCING
POWER FOR MINNESOTA DURING 2002

	Net MWh Generation*	Fuel Used					Other*** (Tons)
		Coal (Tons)	Nat Gas (MCF)	Fuel Oil #2** (Gallons)	Fuel Oil #6 (Gallons)	Nuclear (Mbtu)	
Boswell EC (79% share Unit 4) Itasca County, MN							
Unit 1	387,811	229,928		15,887			
Unit 2	443,459	258,848		24,587			
Unit 3	2,585,540	1,508,106		144,183			
Unit 4	3,850,131	2,334,115		314,203			
Cloquet Turbine Generator 5 Carlton County, MN							
Unit 5	112,387		230,393				25,599
Fond Du Lac Hydroelectric Station St. Louis County, MN							
Unit 1	59,746						
Knife Falls Hydroelectric Station Carlton County, MN							
Unit 1	4,423						
Unit 2	4,084						
Unit 3	2,125						
Laskin EC St. Louis County, MN							
Unit 1	312,010	210,254		34,400			
Unit 2	310,525	209,279		34,700			

TABLE 10

NET GENERATION AND FUEL CONSUMPTION FOR ELECTRIC GENERATING PLANTS PRODUCING POWER FOR MINNESOTA DURING 2002

	Net MWh Generation*	Fuel Used					Other*** (Tons)
		Coal (Tons)	Nat Gas (MCF)	Fuel Oil #2** (Gallons)	Fuel Oil #6 (Gallons)	Nuclear (Mbtu)	
Little Falls Hydroelectric Station Morrison County, MN							
Unit 1	7,429						
Unit 2	7,674						
Unit 3	8,085						
Unit 4	12,271						
Unit 5	1,083						
Unit 6	531						
M.L. Hibbard Steam Station St. Louis County, MN							
Unit 3	13,268	7,725					2,282
Unit 4	4,990	2,857					844
Pillager Hydroelectric Station Cass County, MN							
Unit 1	5,639						
Unit 2	5,098						
Prairie River Hydroelectric Station Itasca County, MN							
Unit 1	895						
Unit 2	1,283						
Rapids Energy Center Itasca County, MN							
Unit 4	4,400						
Unit 5	3,700						
Unit 6	33,313	28,684	939,120				
Unit 7	89,010						336,238

TABLE 10

NET GENERATION AND FUEL CONSUMPTION FOR ELECTRIC GENERATING PLANTS PRODUCING POWER FOR MINNESOTA DURING 2002

	Fuel Used						
	Net MWh	Coal	Nat Gas	Fuel Oil #2**	Fuel Oil #6	Nuclear	Other***
	Generation*	(Tons)	(MCF)	(Gallons)	(Gallons)	(Mbtu)	(Tons)
Scanlon Hydroelectric Station							
Carlton County, MN							
Unit 1	1,524						
Unit 2	2,676						
Unit 3	2,744						
Unit 4	2,184						
Sylvan Hydroelectric Station							
Cass County, MN							
Unit 1	3,378						
Unit 2	4,016						
Unit 3	3,487						
Taconite Harbor							
Cook County, MN							
Unit 1	180,487	140,016		57,537			
Unit 2	292,668	219,846		262,663			
Unit 3	276,434	182,042		120,241			
Thomson Hydroelectric Station							
Carlton County, MN							
Unit 1	65,671						
Unit 2	43,989						
Unit 3	48,133						
Unit 4	43,724						
Unit 5	43,493						
Unit 6	61,933						
Winton Hydroelectric Station							
Lake County, MN							
Unit 2	11,641						
Unit 3	8,253						

TABLE 10

NET GENERATION AND FUEL CONSUMPTION FOR ELECTRIC GENERATING PLANTS PRODUCING POWER FOR MINNESOTA DURING 2002

	Net MWh Generation*	Fuel Used					Other*** (Tons)
		Coal (Tons)	Nat Gas (MCF)	Fuel Oil #2** (Gallons)	Fuel Oil #6 (Gallons)	Nuclear (Mbtu)	
Minnkota Power Cooperative, Inc.							
Coyote Station (30% share) Mercer County, ND							
Unit 1	892,573	734,405		97,727			
Grand Forks Diesel Plant Grand Forks County, ND							
Unit 1	2			143			
Unit 2	2			198			
Unit 3	2			182			
Unit 4	4			305			
Unit 5	4			326			
Unit 6	2			191			
Unit 7	4			331			
Unit 8	5			406			
Unit 9	4			351			
Unit 10	4			349			
Unit 11	5			355			
Harwood Diesel Plant Cass County, ND							
Unit 1	4			342			
Unit 2	4			388			
Unit 3	4			373			
Milton R. Young (29% share Unit 2) Oliver County, ND							
Unit 1	1,820,963	1,550,552		782,662			
Unit 2	957,579	832,911		78,272			

TABLE 10

NET GENERATION AND FUEL CONSUMPTION FOR ELECTRIC GENERATING PLANTS PRODUCING POWER FOR MINNESOTA DURING 2002

	Net MWh Generation*	Fuel Used					Other*** (Tons)
		Coal (Tons)	Nat Gas (MCF)	Fuel Oil #2** (Gallons)	Fuel Oil #6 (Gallons)	Nuclear (Mbtu)	
Moorhead Public Service							
Moorhead Power Plant Clay County, MN							
Unit 6	47			5,268			
Unit 8 - wind	1,536						
Unit 9 - wind	1,632						
Moose Lake Water & Light							
Moose Lake Municipal Plant Carlton County, MN							
Unit 1	1			825			
Unit 2	1			400			
Unit 4	1			680			
New Ulm Public Utilities							
New Ulm Gas Turbine Plant Brown County, MN							
Unit 5	172			18,391			
Unit 7	289			37,825			
New Ulm Steam Plant Brown County, MN							
Unit 3	6,623		61,455				
Unit 4	4,230		39,250				
Unit 6	1,554		14,420				

TABLE 10

NET GENERATION AND FUEL CONSUMPTION FOR ELECTRIC GENERATING PLANTS PRODUCING POWER FOR MINNESOTA DURING 2002

	Net MWh Generation*	Fuel Used					Other*** (Tons)
		Coal (Tons)	Nat Gas (MCF)	Fuel Oil #2** (Gallons)	Fuel Oil #6 (Gallons)	Nuclear (Mbtu)	
Otter Tail Power Company							
Bemidji Hydroelectric Beltrami County, MN Units 1 & 2	585						
Big Stone Plant (54% share) Grant County, SD Unit 1	1,628,841	1,004,747		113,009		18,594	
Coyote Station (35% share) Mercer County, ND Unit 1	1,063,942	876,006		117,258			
Dayton Hollow Hydroelectric Otter Tail County, MN Units 1 & 2	7,666						
Fergus Control Center Otter Tail County, MN Unit 1	21			1,520			
Hoot Lake Hydroelectric Otter Tail County, MN Unit 1	4,009						

TABLE 10

NET GENERATION AND FUEL CONSUMPTION FOR ELECTRIC GENERATING PLANTS PRODUCING POWER FOR MINNESOTA DURING 2002

	Fuel Used						
	Net MWh	Coal	Nat Gas	Fuel Oil #2**	Fuel Oil #6	Nuclear	Other***
	Generation*	(Tons)	(MCF)	(Gallons)	(Gallons)	(Mbtu)	(Tons)
Hoot Lake Steam Plant Otter Tail County, MN							
Unit 1	-616	196					
Unit 2	370,377	222,106		10,917			
Unit 2A	0						
Unit 3	460,444	284,123		29,045			
Unit 3A	0						
Jamestown Turbine Plant Stutsman County, ND							
Unit 1	620			79,186			
Unit 2	391			61,335			
Lake Preston Turbine Plant Kingsbury County, SK							
Unit 1	173			32,158			
Pisgah Hydroelectric Otter Tail County, MN							
Unit 1	5,009						
Potlatch Cogeneration Beltrami County, MN							
Unit 1	36,211						141,296
Taplin Gorge Hydroelectric Otter Tail County, MN							
Unit 1	4,357						
Wright Hydroelectric Otter Tail County, MN							
Unit 1	2,595						

TABLE 10

NET GENERATION AND FUEL CONSUMPTION FOR ELECTRIC GENERATING PLANTS PRODUCING POWER FOR MINNESOTA DURING 2002

	Net MWh Generation*	Fuel Used					Other*** (Tons)
		Coal (Tons)	Nat Gas (MCF)	Fuel Oil #2** (Gallons)	Fuel Oil #6 (Gallons)	Nuclear (Mbtu)	
Preston Public Utilities							
Preston Power Plant Fillmore County, MN Unit 4, 5 & 6	13,910		2,426	22,015			
Princeton Public Utilities							
Princeton Power Plant Mille Lacs County, MN Unit 3	178			11,467			
Unit 4	54			3,623			
Unit 5	55			3,692			
Unit 6	153			11,410			
Redwood Falls Public Utilities							
Redwood Falls Hydroelectric Plant Redwood County, MN Unit 1A	1,542						
Redwood Falls Main Plant Unit 2	828		7,959	52,392			
Southside Substation Unit 1	213			13,915			
Unit 3	16			1,300			
Unit 4	16			1,347			
Unit 5	15			1,297			

TABLE 10

NET GENERATION AND FUEL CONSUMPTION FOR ELECTRIC GENERATING PLANTS PRODUCING POWER FOR MINNESOTA DURING 2002

	Net MWh Generation*	Fuel Used					Other*** (Tons)
		Coal (Tons)	Nat Gas (MCF)	Fuel Oil #2** (Gallons)	Fuel Oil #6 (Gallons)	Nuclear (Mbtu)	
Rochester Public Utilities							
Cascade Creek Olmsted County, MN							
Unit 1	2,918		9,871		106,636		
Unit 2	10,786		110,871		63,423		
Lake Zumbro Hydroelectric Wabasha County, MN							
Units 1 & 2	13,566						
Silver Lake Steam Plant Olmsted County, MN							
Unit 1	757	813	6,177				
Unit 2	6,048	3,323	11,445				
Unit 3	20,663	10,936	30,414				
Unit 4	89,642	43,673	30,519				
Roseau Municipal Water & Light							
Roseau Municipal Power Plant Roseau County, MN							
Units 1 - 3	0						
Sleepy Eye Public Utilities							
Sleepy Eye Power Plant Brown County, MN							
Unit 1	0			1,286			
Unit 2	0			1,188			
Unit 3	0			2,689			
Unit 4	0			1,372			
Unit 5	0			1,279			

TABLE 10

NET GENERATION AND FUEL CONSUMPTION FOR ELECTRIC GENERATING PLANTS PRODUCING POWER FOR MINNESOTA DURING 2002

	Net MWh Generation*	Fuel Used					Other*** (Tons)
		Coal (Tons)	Nat Gas (MCF)	Fuel Oil #2** (Gallons)	Fuel Oil #6 (Gallons)	Nuclear (Mbtu)	
Southern Minnesota Municipal Power Agency							
Blooming Prairie Plant Steele County, MN Units 1-3	40			2,982			
Mora Municipal Plant Kanabec County, MN Units 2, 5 & 6	888		6,675	14,910			
New Prague Power Plant LeSueur County, MN Units 2, 3, 4 & 6	3,866		34,191	37,548			
North Branch Power Plant Chisago County, MN Units 1 & 2	28			2,394			
Owatonna Downtown Steele County, MN Units 5 - 7	9,702		148,696				
Preston Municipal Plant Fillmore County, MN Units 4 - 6	508		1,790	22,260			
Redwood Falls Diesel Plant Redwood County, MN Units 1 & 2	1,031		941	59,304			
Sherburne Steam Plant (41% share) Sherburne County, MN Unit 3	2,367,402	1,480,348					
Spring Valley Plant Fillmore County, MN Units 1-3	562		941	28,560			

TABLE 10

NET GENERATION AND FUEL CONSUMPTION FOR ELECTRIC GENERATING PLANTS PRODUCING POWER FOR MINNESOTA DURING 2002

	Net MWh Generation*	Fuel Used					Other*** (Tons)
		Coal (Tons)	Nat Gas (MCF)	Fuel Oil #2** (Gallons)	Fuel Oil #6 (Gallons)	Nuclear (Mbtu)	
Springfield Public Utilities							
Springfield Municipal Plant Brown County, MN Units 5-9	86			5,791			
Steele Waseca Cooperative Electric							
Windmills Steele County, MN							
Unit 1	0						
Unit 2	0						
Unit 3	3,168						
Unit 4	30,920						
Unit 5	6,480						
Unit 6	6,168						
Unit 7	2,920						
Unit 8	81						
Unit 9	3,240						
Unit 10	2,560						
Thief River Falls Municipal Utility							
Thief River Falls Municipal Power Plant (HC) Pennington County, MN							
Unit 1	1,567						
Unit 2	0						
Thief River Falls Municipal Power Plant (IC) Pennington County, MN							
Unit 1	7			558			
Unit 2	6			495			
Unit 3	8			680			
Unit 4	11			1,090			

TABLE 10

NET GENERATION AND FUEL CONSUMPTION FOR ELECTRIC GENERATING PLANTS PRODUCING POWER FOR MINNESOTA DURING 2002

	Fuel Used						
	Net MWh	Coal	Nat Gas	Fuel Oil #2**	Fuel Oil #6	Nuclear	Other***
	Generation*	(Tons)	(MCF)	(Gallons)	(Gallons)	(Mbtu)	(Tons)
Truman Municipal Utility							
Truman Municipal Plant							
Martin County, MN							
Unit 1 & 2	0			0			
Unit 3	2		0	0			
Unit 4	1			0			
Unit 5	1		0	0			
Unit 6	2			0			
Two Harbors Water & Light							
Two Harbors Plant							
Lake County, MN							
Unit 1	40		156	2,005			
Virginia Public Utilities							
Virginia Power Plant							
St. Louis County, MN							
Unit 1	0	0	0				
Unit 5	0	0	0				
Unit 6	0	0	0				
Warren, City of							
Warren Plant							
Marshall County, MN							
Unit 1	2			170			
Unit 2	5			352			
Unit 3	0			18			
Unit 4	1			100			

TABLE 10

NET GENERATION AND FUEL CONSUMPTION FOR ELECTRIC GENERATING PLANTS PRODUCING POWER FOR MINNESOTA DURING 2002

	Fuel Used						
	Net MWh	Coal	Nat Gas	Fuel Oil #2**	Fuel Oil #6	Nuclear	Other***
	Generation*	(Tons)	(MCF)	(Gallons)	(Gallons)	(Mbtu)	(Tons)
Wells Public Utilities							
Wells Plant							
Fairbault County, MN							
Unit 1	150		1,835	1,260			
Unit 2	227		1,970	1,100			
Unit 3	2		25	490			
Unit 4	271		2,143	2,210			
Unit 5	226		308	7,860			
Willmar Municipal Utilities							
Willmar Plant							
Kandiyohi County, MN							
Unit 2	29		710				
Unit 3	45,518	50,485	11,129				
Unit 4	155			10,980			
Windom Municipal Utilities							
Windom Gas Turbine							
Cottonwood County, MN							
Unit 1	7			850			
Unit 2	11			770			
Unit 3	9			626			
Unit 4	7			499			
Xcel Energy							
Allen S. King							
Washington County, MN							
Unit 1	3,312,425	1,786,486	22,865				
Alliant Tech Systems							
Hennepin County, MN							
Units 1 & 2	-50			2,199			

TABLE 10

NET GENERATION AND FUEL CONSUMPTION FOR ELECTRIC GENERATING PLANTS PRODUCING POWER FOR MINNESOTA DURING 2002

	Fuel Used						
	Net MWh	Coal	Nat Gas	Fuel Oil #2**	Fuel Oil #6	Nuclear	Other***
	Generation*	(Tons)	(MCF)	(Gallons)	(Gallons)	(Mbtu)	(Tons)
Angus Anson Minnehaha County, SD Units 2 & 3	69,874		988,300	1,796			
Apple River Hydroelectric St. Croix County, WI Units 1 - 3	18,899						
Bayfront Steam Ashland County, WI Units 3 - 5	260,222	82,047	1,004				5,628
Big Falls Hydroelectric Rusk County, WI Units 1 - 3	42,616						
Black Dog Steam Dakota County, MN Units 2 and 5	272,977		2,153,398				
Unit 3	503,445	342,801	156,639				
Unit 4	905,635	548,760	186,104				
Blue Lake Gas Turbine Scott County, MN Units 1 - 4	2,846			645,147			
Cedar Falls Hydroelectric Dunn County, WI Units 1 - 3	46,721						
Chippewa Falls Hydroelectric Chippewa County, WI Units 1 - 6	89,842						
Cornell Hydroelectric Chippewa County, WI Units 1 - 4	103,866						

TABLE 10

NET GENERATION AND FUEL CONSUMPTION FOR ELECTRIC GENERATING PLANTS PRODUCING POWER FOR MINNESOTA DURING 2002

	Fuel Used						
	Net MWh	Coal	Nat Gas	Fuel Oil #2**	Fuel Oil #6	Nuclear	Other***
	Generation*	(Tons)	(MCF)	(Gallons)	(Gallons)	(Mbtu)	(Tons)
Dells Hydroelectric Eau Claire County, WI Units 1 - 7	52,914						
Flambeau Price County, WI Unit 1	1,210		25,791	0			
French Island Gas Turbine La Crosse County, WI Units 3 & 4	3,819			542,001			
French Island Steam Plant La Crosse County, WI Units 1 & 2	53,983		2,658				81,361
Granite City Gas Turbine Sherburne County, MN Units 1 - 4	1,426		36,752	6,392			
Hayward Hydroelectric Sawyer County, WI Unit 1	1,549						
Hennepin Island Hydroelectric Hennepin County, MN Units 1 - 5	80,894						
High Bridge Steam Ramsey County, MN Unit 4	-14,119						
Unit 5	491,580	300,980	23,512				
Unit 6	822,676	483,035	64,439				
Holcombe Hydroelectric Chippewa County, WI Units 1 - 3	128,945						

TABLE 10

NET GENERATION AND FUEL CONSUMPTION FOR ELECTRIC GENERATING PLANTS PRODUCING POWER FOR MINNESOTA DURING 2002

	Fuel Used						
	Net MWh	Coal	Nat Gas	Fuel Oil #2**	Fuel Oil #6	Nuclear	Other***
	Generation*	(Tons)	(MCF)	(Gallons)	(Gallons)	(Mbtu)	(Tons)
Inver Hills Gas Turbine Dakota County, MN Units 1 - 8	73,100		1,047,978	69,416			
Jim Falls Hydroelectric Chippewa County, WI Units 1 - 3	181,614						
Key City Gas Turbine Blue Earth County, MN Units 1 - 4	4,340		91,997				
Ladysmith Hydroelectric Rusk County, WI Units 1 - 3	13,265						
Menomonie Hydroelectric Dunn County, WI Units 1 & 2	31,373						
Minnesota Valley Steam Chippewa County, MN Unit 3	-185	157	1,484	400			
Monticello Nuclear Wright County, MN Unit 1	5,015,557					51,963,592	
Pathfinder Minnehaha County, SD Unit 1	-1,384			0			
Prairie Island Nuclear Goodhue County, MN Unit 1	4,373,139					46,119,502	
Unit 2	4,296,128					45,088,248	

TABLE 10

NET GENERATION AND FUEL CONSUMPTION FOR ELECTRIC GENERATING PLANTS PRODUCING POWER FOR MINNESOTA DURING 2002

	Fuel Used						
	Net MWh	Coal	Nat Gas	Fuel Oil #2**	Fuel Oil #6	Nuclear	Other***
	Generation*	(Tons)	(MCF)	(Gallons)	(Gallons)	(Mbtu)	(Tons)
Red Wing Steam Goodhue County, MN Units 1 & 2	116,877		33,278				197,868
Riverdale Hydroelectric St. Croix County, WI Units 1 & 2	3,942						
Riverside Steam Hennepin County, MN Unit 7	933,879	575,957	25,650	15,586			
Unit 8	1,505,106	825,475		47,392			
Saxon Falls Hydroelectric Jackson County, WI Units 1 & 2	12,447						
Sherburne Cnty Steam (59% share Unit 3) Sherburne County, MN Unit 1	4,895,847	2,914,864		129,495			
Unit 2	4,633,354	2,721,721		197,302			
Unit 3	5,815,447	1,983,340		329,075			
St. Croix Falls Hydroelectric Polk County, WI Units 1 - 8	135,926						
Superior Falls Hydroelectric Gogebic County, MI Units 1 & 2	13,940						
Thornapple Hydroelectric Rusk County, WI Units 1 & 2	7,850						

TABLE 10

NET GENERATION AND FUEL CONSUMPTION FOR ELECTRIC GENERATING PLANTS PRODUCING POWER FOR MINNESOTA DURING 2002

	Net MWh Generation*	Fuel Used					Other*** (Tons)
		Coal (Tons)	Nat Gas (MCF)	Fuel Oil #2** (Gallons)	Fuel Oil #6 (Gallons)	Nuclear (Mbtu)	
Trego Hydroelectric Washburn County, WI Units 1 & 2	5,853						
United Health Care Hennepin County, MN Units 1 & 2	-71			530			
United Hospital Ramsey County, MN Units 1 - 3	-181			3,579			
West Faribault Jet Engine Rice County, MN Units 2 & 3	384		8,723				
Wheaton Chippewa County, WI Units 1 - 6	34,935		497,930	353,031			
White River Hydroelectric Ashland County, WI Units 1 & 2	4,585						
Wilmarth Steam Blue Earth County, MN Units 1 & 2	131,155		40,787				209,072

TABLE 10

**NET GENERATION AND FUEL CONSUMPTION FOR ELECTRIC GENERATING PLANTS PRODUCING
POWER FOR MINNESOTA DURING 2002**

	Net MWh Generation*	Fuel Used					Other*** (Tons)
		Coal (Tons)	Nat Gas (MCF)	Fuel Oil #2** (Gallons)	Fuel Oil #6 (Gallons)	Nuclear (Mbtu)	
Wisota Hydroelectric Chippewa County, WI Units 1 - 6	182,675						
PUBLIC UTILITY TOTALS	88,683,997	43,046,018	14,964,851	9,402,349	1,404,707	177,171,342	1,561,789
QUALIFYING FACILITIES^	1,984,068						

* Net generation values of zero indicate less than one MWh of production; however, values are included in the Public Utility Total. Negative net generation values indicate that the station electric consumption exceeded the gross generation of the plant. However, these plants did produce positive amounts of energy during the year.

** Fuel Oil #2 includes Diesel Fuel.

*** "Other" fuels include wood, wood by-products, tire- and refuse-derived fuel.

^ Qualifying facilities are addressed under Minn. Rules, Chapter 7835. Reported information for qualifying facilities is required annually in Minn. Rules 7835.1300, 1400 & 1800. 802,132 MWh (40%) of the net generation from qualifying facilities was produced using wind.

SECTION II

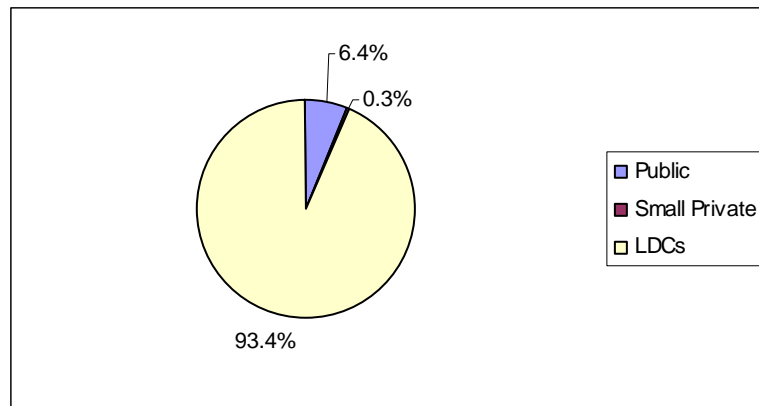
NATURAL-GAS UTILITIES

SECTION II: NATURAL-GAS UTILITIES

Overview

Natural-gas companies in Minnesota are owned both privately and publicly. These distribution companies deliver gas to customers, regardless of whether the utility or a third party¹ purchases the gas for the customer. The Minnesota Public Utilities Commission regulates the rates of large privately-owned local distribution companies (LDCs). The Commission generally does not regulate rates of publicly-owned utilities. The Commission also does not regulate rates of privately-owned companies that are smaller than legislatively set limits. As Figure 3 below shows, LDCs distribute most of Minnesota's natural gas.

Figure 3: Natural-Gas Throughput Reported by Type of Utility²



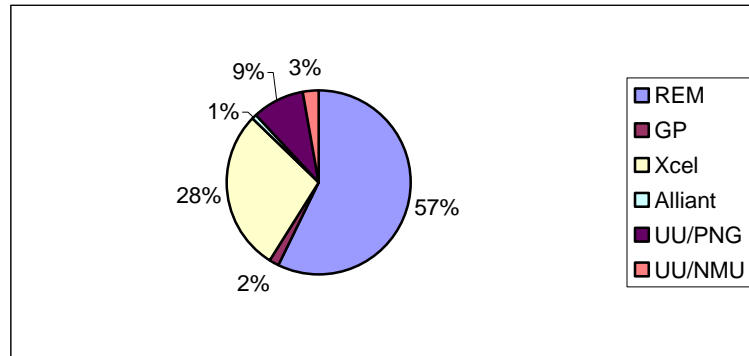
In 2002 there were six investor-owned local distribution companies serving customers in Minnesota. There were five small privately-owned and 29 municipal gas utilities serving Minnesota customers.

¹ Certain customers can purchase natural-gas supplies from companies that are not regulated by state authorities. However, these customers must still transport the gas through their state-regulated local natural-gas companies.

² See Table 13 for consumption by company.

As Figure 4 shows, Reliant Energy Minnegasco is the largest investor-owned utility, followed by Xcel Energy and UtiliCorp United/Peoples Natural Gas Company. The investor-owned company with the smallest Minnesota consumption in 2002 was Alliant Energy.

Figure 4: Natural-Gas Consumption Reported by Investor-Owned Utilities



Investor-Owned Natural-Gas Companies³

Alliant: Alliant Energy

GP: Great Plains Natural Gas Co.

XCEL: Xcel Energy

REM: Reliant Energy Minnegasco

UU/NMU: UtiliCorp United/Northern Minnesota Utilities

UU/PNG: UtiliCorp United/Peoples Natural Gas Co.

³ See Table 13 for consumption by company.

Introduction to Natural-Gas Tables

The tables in this section provide both aggregate and individual company information reported by natural-gas companies serving Minnesota. Tables 11 and 12 provide overall natural-gas consumption and numbers of natural-gas customers in Minnesota.

Tables 13 and 14 provide natural-gas consumption and numbers of natural-gas customers reported by each natural-gas company serving Minnesota in 2002. Table 15 provides revenues reported by the natural-gas companies.

Table 11 indicates that 2002 consumption of natural gas in the residential sector was 7 percent higher than 2001 consumption. As Figure 5 below indicates, residential consumption of natural gas on a weather-normalized basis has declined since 1973 but has remained relatively steady in recent years.

Figure 5: Weather-Normalized Natural-Gas Use Per Residential Customer

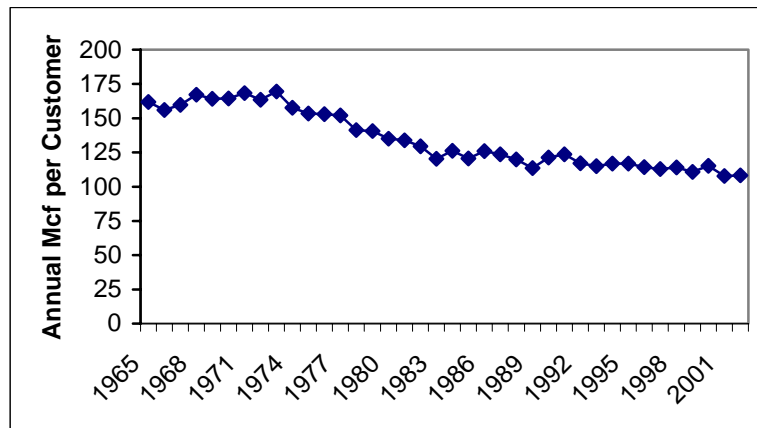


TABLE 11

TOTAL MINNESOTA HISTORICAL NATURAL-GAS CONSUMPTION (1,000 MCF)

Year	Residential	Commercial	Industrial	Company Use	Unaccounted For	Deliveries to Transportation*	Total
1965	87,309	52,121	107,914	952	524	0	248,821
1966	87,586	51,739	124,548	1,027	898	0	265,798
1967	89,671	61,014	130,519	1,076	1,002	0	283,282
1968	91,597	63,783	149,646	1,228	845	0	307,098
1969	97,181	69,359	147,976	1,218	726	0	316,460
1970	102,625	74,096	149,782	1,099	1,040	0	328,642
1971	103,291	74,081	155,428	1,195	1,009	0	335,004
1972	112,303	79,578	140,631	1,247	1,007	0	334,765
1973	98,547	80,111	159,942	1,396	256	0	340,253
1974	102,861	79,637	143,553	1,333	625	0	328,009
1975	104,377	78,752	121,772	1,158	122	0	306,181
1976	106,415	74,651	103,545	2,657	765	0	288,033
1977	101,361	72,167	84,873	225	158	0	258,784
1978	106,238	77,378	86,263	335	1,488	0	271,701
1979	111,917	79,599	95,839	570	(1,227)	0	286,699
1980	103,208	80,845	90,551	342	1,650	0	276,596
1981	95,969	77,263	84,288	304	58	0	257,882
1982	107,478	83,208	64,473	463	(1,957)	0	253,664
1983	97,359	79,025	59,101	231	3,746	0	239,470
1984	101,868	82,770	64,584	258	(587)	0	248,893
1985	106,870	85,273	63,096	213	1,515	0	256,967
1986	103,139	80,382	52,364	238	(3,278)	0	232,846
1987	89,919	70,581	51,064	275	19	11,736	223,594
1988	108,423	85,462	41,344	284	1,060	32,916	269,489
1989	112,496	84,155	41,804	275	965	40,567	280,262
1990	106,894	85,978	44,635	217	(2,790)	48,843	283,777
1991	117,229	86,312	39,586	223	2,098	59,221	304,668

(Contd. on next page)

TABLE 11 – contd.

TOTAL MINNESOTA HISTORICAL NATURAL-GAS CONSUMPTION (1,000 MCF)

Year	Residential	Commercial	Industrial	Company Use	Unaccounted For	Deliveries to Transportation*	Total
1992	113,160	83,255	36,977	430	3,260	57,086	294,169
1993	124,114	85,505	43,331	225	2,288	51,129	306,592
1994	121,450	80,888	42,452	335	1,014	59,177	305,317
1995	128,458	86,473	37,945	257	1,860	76,072	331,065
1996	142,268	94,824	44,429	333	1,938	61,007	344,799
1997	129,182	96,089	42,294	305	1,054	64,380	333,304
1998	110,934	84,596	43,837	194	1,673	63,934	305,168
1999	118,941	90,294	42,454	344	2,001	64,457	318,490
2000	128,327	95,888	41,314	142	2,441	64,273	332,385
2001	125,984	95,662	37,915	159	2,691	51,024	313,435
2002	134,665	98,443	36,122	148	356	65,162	334,896

* Some natural gas customers can purchase gas supplies from unregulated natural gas suppliers and transport this gas through regulated utilities' systems.

Note: Industrial data includes natural gas sold to produce electricity.

TABLE 12

NUMBER OF MINNESOTA NATURAL-GAS CUSTOMERS*

Year	Residential Firm	Commercial Firm	Commercial Interruptible	Industrial Firm	Industrial Interruptible	Total
1965	513,568	40,432	3,324	709	725	558,758
1966	529,405	42,649	3,540	728	797	577,119
1967	546,115	45,352	3,799	758	932	596,956
1968	563,641	47,825	4,047	795	1,022	617,330
1969	577,380	49,670	4,179	818	1,044	633,091
1970	591,584	51,649	4,300	825	1,085	649,443
1971	603,357	53,230	4,418	838	1,137	662,980
1972	615,681	55,198	4,487	849	1,167	677,382
1973	631,314	56,701	4,670	861	1,210	694,756
1974	653,376	59,660	4,796	882	1,262	719,976
1975	666,996	60,972	4,789	967	1,270	734,994
1976	678,811	61,993	4,895	953	1,231	747,883
1977	691,089	62,778	4,910	929	1,249	760,955
1978	710,498	64,665	4,874	867	1,160	782,064
1979	732,503	66,974	4,556	855	1,224	806,112
1980	767,457	70,997	4,283	881	1,209	844,827
1981	785,008	73,204	4,168	972	1,136	864,488
1982	792,088	75,016	3,529	1,012	1,011	872,656
1983	803,542	76,605	3,374	979	881	885,381
1984	822,509	79,032	3,371	1,098	950	906,960
1985	841,760	82,256	3,417	1,072	983	929,488
1986	860,695	85,063	3,581	1,023	800	951,162
1987	884,476	86,887	3,523	1,036	823	976,745
1988	904,515	88,675	3,452	1,067	783	998,492
1989	935,252	91,628	3,371	1,085	788	1,032,124
1990	962,006	94,214	3,264	1,088	797	1,061,369
1991	979,426	95,641	3,263	1,072	702	1,080,104
1992	1,008,912	97,810	3,272	1,118	749	1,111,861
1993	1,034,433	98,917	3,174	1,074	526	1,138,124
1994	1,060,692	100,952	3,359	987	667	1,166,657
1995	1,091,477	102,097	3,343	814	672	1,198,403
1996	1,124,739	105,158	3,471	842	773	1,234,983
1997	1,151,421	107,223	3,422	772	753	1,263,591
1998	1,176,228	109,220	3,718	610	832	1,290,612
1999	1,201,349	115,901	3,875	473	986	1,340,315
2000	1,238,679	114,271	3,917	659	898	1,358,424
2001	1,263,214	116,640	3,951	693	853	1,385,351
2002	1,293,734	119,032	3,974	697	785	1,418,222

* Sales and transportation customers are combined.

TABLE 13

MINNESOTA NATURAL-GAS CONSUMPTION (MCF) BY COMPANY IN 2002

Name	Residential	Commercial	Industrial	Company Use	Unaccounted For	Deliveries to Transportation Customers	Electric Generation	Total
Alliant Energy	941,635	613,613	389,655	0	0	178,729	0	2,123,632
Argyle, City of	28,516	8,518	0	0	0	0	0	37,034
Austin Utilities-Gas Dept	1,253,871	322,499	*	17,965	0	0	*	2,269,136
Bagley PUC	19,939	41,391	0	0	0	0	0	61,330
Circle Pines Utilities	239,218	148,541	0	4,579	9,577	0	0	401,915
Cohasset, City of	58,180	11,793	18,883	0	0	0	0	88,856
Community Utilities Co. Inc.	72,834	26,073	27,651	0	0	0	0	126,558
Duluth Dept of Public Wrks & Util	2,697,114	2,098,858	270,699	0	(158,466)	0	0	4,908,205
Eagle Bend/Clarissa Gas Util	35,045	69,003	0	0	0	0	0	104,048
Fairfax Municipal Gas	3,438	2,639	0	128	0	0	0	6,205
Fosston Municipal Util	19,388	14,813	111,223	0	3,238	0	0	148,662
Goodhue PUC	27,426	44,396	0	0	0	0	0	71,822
Gorham's Inc dba Northwest Gas	14,233	23,421	26,227	0	0	0	0	63,881
Great Plains Nat Gas Co	1,663,478	1,894,421	*	8,351	0	1,067,274	*	5,454,880
Greater Minnesota Gas, Inc.	178,216	17,441	0	0	0	0	0	195,657
Hallock, City of	52,311	17,986	0	1,310	0	0	0	71,607
Hawley Pub Util-Nat Gas	39,371	37,348	0	0	1,929	0	0	78,648
Henning Municipal Gas	25,491	13,831	0	0	0	0	0	39,322
Hibbing PUC	381,590	*	0	0	0	0	*	678,251
Hutchinson Utilities Commission	475,703	422,202	498,800	8,751	476	0	368,592	1,774,524
Lake Park Pub Utilities	23,664	14,196	0	1,404	0	0	0	39,264
Morgan Natural Gas Services	15,192	*	*	0	0	0	0	50,478
New Ulm PUC	476,802	215,513	*	0	0	0	*	1,498,185
New York Mills Mun Gas	43,363	77,561	0	0	2,281	0	0	123,205
NW Natural Gas LLC	109,607	44,468	47,733	0	0	0	0	201,808
NW Nat Gas of Murray Cnty., Inc.	49,288	32,280	36,210	0	0	0	0	117,778
Owatonna Pub Utilities	874,444	466,294	978,858	0	(38,609)	0	5,953	2,286,940
Perham, City of	215,511	99,536	660,054	0	0	0	0	975,101
Randall Municipal Gas	18,929	*	*	0	0	0	0	36,221
Reliant Energy-Minnegasco	70,957,056	57,597,600	13,610,695	79,552	197,421	11,343,041	1,587,392	155,372,757

(Contd. on next page)

TABLE 13 – contd.

MINNESOTA NATURAL-GAS CONSUMPTION (MCF) BY COMPANY IN 2002

Name	Residential	Commercial	Industrial	Company Use	Unaccounted For	Deliveries to Transportation Customers	Electric Generation	Total
Round Lake, City of	12,521	7,788	14,017	0	645	0	0	34,971
Stephen Mun Gas	19,549	8,900	0	0	744	0	0	29,193
Two Harbors Mun Gas	183,598	123,088	206,780	0	0	0	0	513,466
Tyler, City of	26,485	7,921	0	0	0	0	0	34,406
Utilicorp United/NMU	3,322,010	3,250,390	622,467	4,190	0	9,205,722	0	16,404,779
Utilicorp United, Inc.	13,409,060	8,245,093	1,214,188	7,945	0	36,263,984	0	59,140,270
Virginia Public Utilities	119,537	*	0	0	(3,460)	0	*	456,805
Warren, City of	52,229	53,011	0	0	0	0	0	105,240
Westbrook Public Utilities	23,172	16,009	0	0	0	0	0	39,181
Xcel Energy	36,485,998	21,818,591	11,686,891	13,697	340,124	7,103,537	1,283,413	78,732,251
TOTAL	134,665,012	98,443,046	32,062,818	147,872	355,900	65,162,287	4,059,537	334,896,472

*Withheld to avoid disclosure of individual company information. Data included in totals.

TABLE 14

MINNESOTA NATURAL-GAS CUSTOMERS BY COMPANY IN 2002*

Name	Residential Firm	Commercial Firm	Commercial Interruptible	Industrial Firm	Industrial Interruptible	Electric Generation	Total
Alliant Energy	9,214	1,139	49	12	11	-	10,425
Argyle, City of	211	36	-	-	-	-	247
Austin Utilities-Gas Dept	10,179	44	39	1	3	1	10,267
Bagley PUC	330	93	-	-	-	-	423
Circle Pines Utilities	2,541	133	3	-	-	-	2,677
Cohasset, City of	616	35	-	7	-	-	658
Community Utilities Co. Inc.	645	74	-	6	-	-	725
Duluth Dept of Public Works & Util	22,701	1,792	90	19	11	-	24,613
Eagle Bend/Clarissa Gas Util	407	81	-	-	-	-	488
Fairfax Municipal Gas	420	67	-	-	-	-	487
Fosston Municipal Util	321	72	-	3	-	-	396
Goodhue PUC	340	67	-	-	-	-	407
Gorham's Inc dba Northwest Gas	206	78	-	4	3	-	291
Great Plains Nat Gas Co	17,962	2,706	150	-	10	1	20,829
Greater Minnesota Gas, Inc.	2,169	26	14	-	-	-	2,209
Hallock, City of	415	10	-	-	-	-	425
Hawley Pub Util-Nat Gas	453	80	-	-	-	-	533
Henning Municipal Gas	320	45	-	-	-	-	365
Hibbing PUC	3,215	358	13	-	-	1	3,587
Hutchinson Utilities Commission	4,382	498	5	2	1	2	4,890
Lake Park Pub Utilities	254	51	-	-	-	-	305

(Contd. on next page)

TABLE 14 – contd.

MINNESOTA NATURAL-GAS CUSTOMERS BY COMPANY IN 2002*

Name	Residential Firm	Commercial Firm	Commercial Interruptible	Industrial Firm	Industrial Interruptible	Electric Generation	Total
Morgan Natural Gas Services	228	40	-	1	-	-	269
New Ulm PUC	5,299	530	31	-	21	1	5,882
New York Mills Mun Gas	423	73	-	-	-	-	496
NW Natural Gas LLC	1,284	205	-	-	17	-	1,506
NW Natural Gas of Murray Cnty., Inc.	623	129	-	-	9	-	761
Owatonna Pub Utilities	8,357	670	-	-	70	8	9,105
Perham, City of	2,143	78	-	-	28	-	2,249
Randall Municipal Gas	209	36	1	1	-	-	247
Reliant Energy-Minnegasco	666,903	58,345	2,642	228	370	18	728,506
Round Lake, City of	146	30	1	4	1	-	182
Stephen Mun Gas	208	53	-	-	-	-	261
Two Harbors Mun Gas	1,378	197	6	27	-	-	1,608
Tyler, City of	290	65	-	-	-	-	355
Utilicorp United/NMU	31,487	5,120	145	54	15	-	36,821
Utilicorp United, Inc.	135,176	14,779	324	174	96	-	150,549
Virginia Public Utilities	1,212	277	1	-	-	1	1,491
Warren, City of	485	109	-	-	-	-	594
Westbrook Public Utilities	258	22	-	-	-	-	280
Xcel Energy	360,324	30,789	460	115	119	6	391,813
TOTAL	1,293,734	119,032	3,974	658	785	39	1,418,222

*Sales and transportation customers are combined.

TABLE 15

MINNESOTA NATURAL-GAS REVENUE BY COMPANY IN 2002^

Name	Commercial		Commercial	Industrial	Industrial	TOTAL
	Residential	Firm	Interruptible	Firm^^	Interruptible	
Alliant Energy	\$7,812,165	\$3,255,948	\$1,052,180	\$307,738	\$1,840,118	\$14,268,149
Argyle, City of	\$202,867	\$60,597	\$0	\$0	\$0	\$263,464
Austin Utilities-Gas Dept	\$8,780,928	\$424,508	\$1,547,977	\$146,684	\$295,674	\$11,195,771
Bagley PUC	\$145,376	\$247,978	\$0	\$0	\$0	\$393,354
Circle Pines Utilities	\$1,696,327	\$524,151	\$293,145	\$0	\$0	\$2,513,623
Cohasset, City of	\$387,385	\$68,353	\$0	\$77,011	\$0	\$532,749
Community Utilities Co. Inc.	\$484,485	\$171,876	\$0	\$160,369	\$0	\$816,730
Duluth Dept of Public Works & Util	\$22,069,862	\$8,274,959	\$4,949,967	\$342,878	\$1,058,080	\$36,695,746
Eagle Bend/Clarissa Gas Util	\$259,157	\$141,380	\$0	\$0	\$0	\$400,537
Fairfax Municipal Gas	\$270,767	\$91,661	\$0	\$69,462	\$0	\$431,890
Fosston Municipal Util	\$139,414	\$104,726	\$0	\$507,640	\$0	\$751,780
Goodhue PUC	\$235,662	\$217,795	\$0	\$0	\$0	\$453,457
Gorham's Inc dba Northwest Gas	\$127,674	\$189,094	\$0	\$120,121	\$31,588	\$468,477
Great Plains Nat Gas Co	\$10,390,969	\$5,869,030	\$3,938,677	*	*	\$23,264,856
Greater Minnesota Gas, Inc.	\$1,453,309	\$83,143	\$67,399	\$0	\$0	\$1,603,851
Hallock, City of	\$388,288	\$113,376	\$0	\$0	\$0	\$501,664
Hawley Pub Util-Nat Gas	\$322,265	\$286,153	\$0	\$0	\$0	\$608,418
Henning Municipal Gas	\$216,851	\$170,383	\$0	\$0	\$0	\$387,234
Hibbing PUC	\$4,053,400	\$444,643	\$17,914	\$0	\$0	\$4,515,957
Hutchinson Utilities Commission	\$3,180,526	\$1,999,456	\$625,005	*	*	\$8,062,199
Lake Park Pub Utilities	\$168,726	\$98,331	\$0	\$0	\$0	\$267,057
Morgan Natural Gas Services	\$112,830	*	\$0	*	\$0	\$322,352
New Ulm PUC	\$3,706,522	\$1,465,047	\$138,415	\$0	\$1,567,176	\$6,877,160
New York Mills Mun Gas	\$371,036	\$632,037	\$0	\$0	\$0	\$1,003,073
NW Natural Gas LLC	\$1,065,196	\$388,895	\$0	\$0	\$345,326	\$1,799,417
NW Nat Gas of Murray Cnty., Inc.	\$493,011	\$297,064	\$0	\$0	\$268,872	\$1,058,947
Owatonna Pub Utilities	\$6,810,310	\$2,931,997	\$0	\$0	\$4,562,956	\$14,305,263
Perham, City of	\$1,473,208	\$1,766,267	\$0	\$0	\$1,656,775	\$4,896,250
Randall Municipal Gas	\$134,548	\$63,622	*	*	\$0	\$227,880
Reliant Energy-Minnegasco	\$451,401,350	\$189,735,219	\$107,197,067	\$3,885,796	\$58,527,295	\$810,746,727

(Contd. on next page)

TABLE 15 – contd.

MINNESOTA NATURAL-GAS REVENUE BY COMPANY IN 2002^

Name	Residential	Commercial Firm	Commercial Interruptible	Industrial Firm^^	Industrial Interruptible	TOTAL
Round Lake, City of	\$84,709	\$32,695	*	\$45,675	*	\$219,452
Stephen Mun Gas	\$159,598	\$66,248	\$0	\$0	\$0	\$225,846
Two Harbors Mun Gas	\$1,122,943	\$583,380	\$173,261	\$937,758	\$0	\$2,817,342
Tyler, City of	\$214,491	\$65,745	\$0	\$0	\$0	\$280,236
Utilicorp United/NMU	\$20,907,596	\$13,127,781	\$3,756,781	\$533,868	\$2,861,632	\$41,187,658
Utilicorp United, Inc.	\$83,332,677	\$38,135,129	\$8,078,870	\$1,829,199	\$6,764,032	\$138,139,907
Virginia Public Utilities	\$1,031,572	*	*	\$0	\$0	\$2,606,398
Warren, City of	\$430,695	\$363,699	\$0	\$0	\$0	\$794,394
Westbrook Public Utilities	\$380,559	\$0	\$0	\$0	\$0	\$380,559
Xcel Energy	\$246,433,718	\$107,902,989	\$16,569,840	\$9,130,418	\$49,626,205	\$429,663,170
TOTAL	\$882,452,972	\$382,151,778	\$148,445,534	\$19,966,877	\$132,931,833	\$1,565,948,994

^ Includes natural gas sales and transportation.

^^ May include electric generation.

* Withheld to avoid disclosure of individual company information. Data included in totals.

SECTION III

ATTACHMENTS

GENERAL NOTES ON DATA

1) Consumption. In general, electric companies report retail electric consumption as follows:

Farm. Electricity supplied to farm households and for agricultural purposes.

Residential. Electricity supplied to non-farm private households.

Commercial. Electricity supplied to small commercial and industrial power accounts. May include use by some apartment dwellers.

Industrial. Electricity supplied to large commercial and industrial power accounts, including mining accounts.

2) Missing Data. Although all utilities are required to report data used in this report annually, some utilities have provided either partial information or no information. In some places, this report notes where these utilities have not reported information. In other places, for the general purpose of comparing 2002 data to previous years' data, this report shows the most recent comparable data for non-reporting companies.

3) Accuracy of Data. While the Department does not audit the records supporting the data companies provide, we do check the reasonableness of the data. We also correct errors in reported data where feasible. However, some data reported by smaller companies may contain a few errors or inconsistencies. These errors should not significantly affect the totals.

GLOSSARY OF TERMS AND ABBREVIATIONS

Btu: British thermal unit; the amount of heat required to raise the temperature of one pound of water one degree Fahrenheit under stated conditions of pressure and temperature (equal to 252 calories, 778 foot-pounds, 1,005 joules and 0.293 watt-hours). It is the U.S. customary unit of measuring the quality of heat, such as the heat content of fuel.

cf: cubic foot; the U.S. customary unit of measurement of gas volume. It is the amount of gas required to fill a volume of one cubic foot under stated conditions of temperature, pressure and water vapor. One cubic foot of natural gas equals 1,000 British thermal units under standard conditions of atmosphere (one) and temperature (60 degrees Fahrenheit).

Ccf: one hundred cubic feet.

Cooperative utility: a utility owned and operated by its members.

Department of DOC: the Minnesota Department of Commerce.

Gas turbine: a type of electric generation plant that relies on turbines driven by the combustion of natural gas or diesel fuel to produce electricity.

GWh: gigawat-hour; the unit of energy equal to that expended in one hour at a rate of one billion watts. One GWh equals 1,000 megawatt-hours.

Hydro: a type of electric generation plant that relies on a water wheel to convert falling water into electricity.

Int. comb. (Internal Combustion): a type of electric generation unit that relies on an internal combustion engine to convert burned diesel, fuel oil, gasoline, or natural gas into electricity.

Investor-owned utility (IOU): Common term for an electric privately-owned utility regulated by the Minnesota Public Utilities Commission.

kW: one kilowatt or one thousand watts.

Local Distribution Company (LDC): Common term for a gas privately-owned utility regulated by the MPUC.

Mcf: one thousand cubic feet; a unit of measure of gas volume.

Minnesota Public Utilities Commission (Commission): the state agency with regulatory jurisdiction over certain Minnesota utilities.

MWh: megawatt-hour; the unit of energy equal to that expended in one hour at a rate of one million watts. One MWh equals 3,414,000 Btus.

Natural Gas (gas): a mixture of hydrocarbon compounds and small quantities of various non-hydrocarbons existing in the gaseous phase or in solution with crude oil in natural underground reservoirs. It comes from the ground with or without crude oil and is generally much higher in heat content than manufactured gas.

Net generation: the total amount of electric energy produced by a generating unit less the electricity consumed by the generating station.

Nuclear: a type of electric generation plant that uses energy obtained by fission, fusion or by radioactive decay to drive the turbines.

Number 2 fuel oil: a distillate fuel oil used for domestic heating and in moderate capacity commercial or industrial burners as well as for generating electricity.

Number 6 fuel oil: a residual fuel oil that is heavier than distillate fuel oil and is used to generate electricity as well as in industrial burners.

Plant capacity: the amount of electric load, measured in megawatts or kilowatts, for which a generating unit is rated either by the user or the manufacturer.

Privately-owned utilities: utility corporations owned by shareholders. Large privately-owned utilities are regulated by the Minnesota Public Utilities Commission.

Publicly-owned utilities: utilities owned, operated and regulated by the city or legal entity in which it resides.

REIS: Regional Energy Information System; the Minnesota Department of Commerce's computerized state energy data collection and information system. It includes energy data the DOC collects directly from energy suppliers as well as data collected by other state departments such as the Minnesota Department of Revenue, Petroleum Tax Division.

RDF: refuse-derived fuel, composed of garbage, that is used in some electric generation plants.

Steam: a type of electric generation plant that relies on steam-driven turbines to generate electricity. Steam is produced in a boiler heated by several combinations of fossil, refuse-derived, or wood-waste fuels.

Transportation (of natural gas): the action taken by a retail customer who purchases natural gas supplies directly from a supplier or marketer and then moves or transports the gas through a utility's distribution system to the customer's destination.

Watt: the unit of measure for electric power or rate of doing work. The rate of energy transfer equivalent to one ampere flowing under pressure of one volt.

Weather-normalized information: information adjusted to remove fluctuation due to changes in weather.

Wind: a type of electric generation plant that uses turbines powered by wind to generate electricity.