



Calendar Year Addendum to the

Annual Report

of the

Gambling Control Board

Calendar Year 2006

January 1 - December 31, 2006

Highlights

- Gross receipts were \$1.3 billion.
- State gambling taxes paid \$51 million (net after refund).
- Lawful purpose expenditures totaled \$63 million.

Minnesota Gambling Control Board

Suite 300 South
1711 West County Road B
Roseville, MN 55113
651-639-4000

www.gcb.state.mn.us

Statistics for this report were provided by the Minnesota Department of Revenue.
CY05 means calendar year 2005 (January 1 - December 31, 2005).
CY06 means calendar year 2006 (January 1 - December 31, 2006).

**CY2006
Gross Receipts, Prizes Paid,
and Gross Profit (net receipts)**

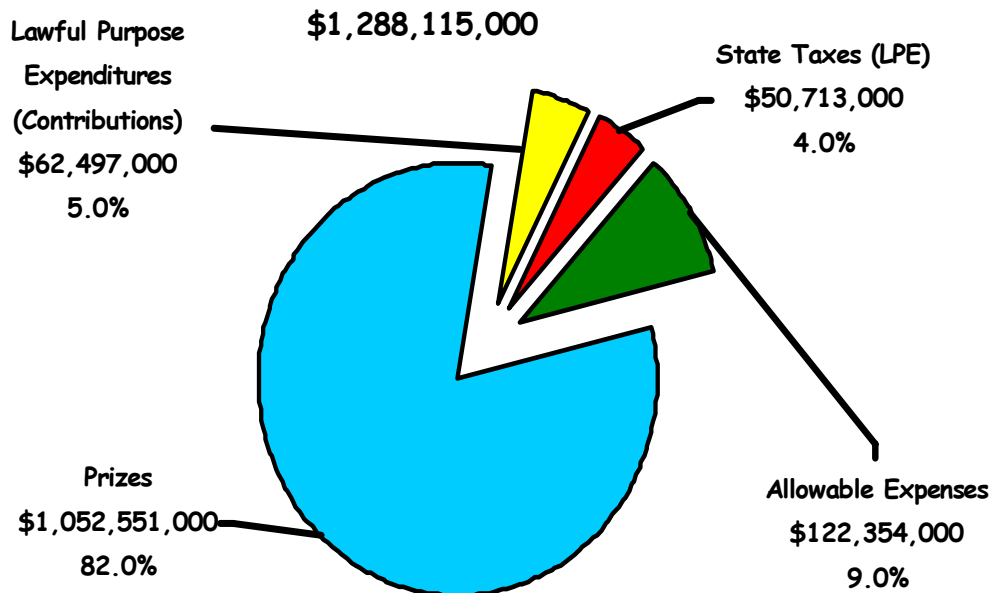
**CY2005
Gross
Receipts**

**% Change
in
Gross
Receipts**

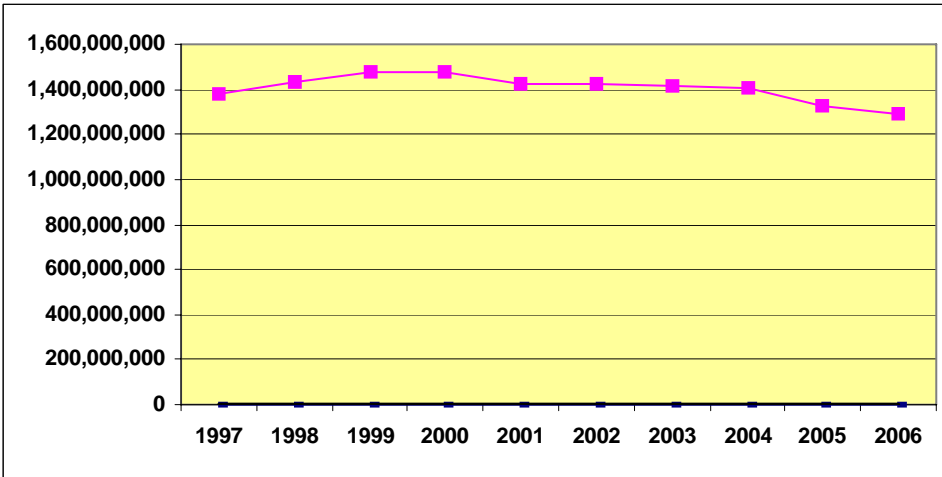
Activity	Gross Receipts	% GR	Prizes Paid	Gross Profit	Gross Receipts	% Change in Gross Receipts
Pull-Tabs	\$1,194,116,000	92.7	\$982,861,000	\$211,255,000	\$1,232,447,000	-3.1
Bingo	64,493,000	5.0	49,258,000	15,235,000	65,347,000	-1.3
Paddlewheels	16,631,000	1.3	12,734,000	3,897,000	16,899,000	-1.6
Raffles	6,331,000	0.5	3,306,000	3,025,000	5,963,000	6.2
Tipboards	6,224,000	0.5	4,392,000	1,832,000	7,808,000	-20.3
Interest Income	320,000	0.0		320,000	208,000	53.8
TOTALS	\$1,288,115,000	100.0	\$1,052,551,000	\$235,564,000	\$1,328,672,000	-3.1

Prize payout 81.7% 19% of gross receipts

How Organizations Spent Their Gross Receipts

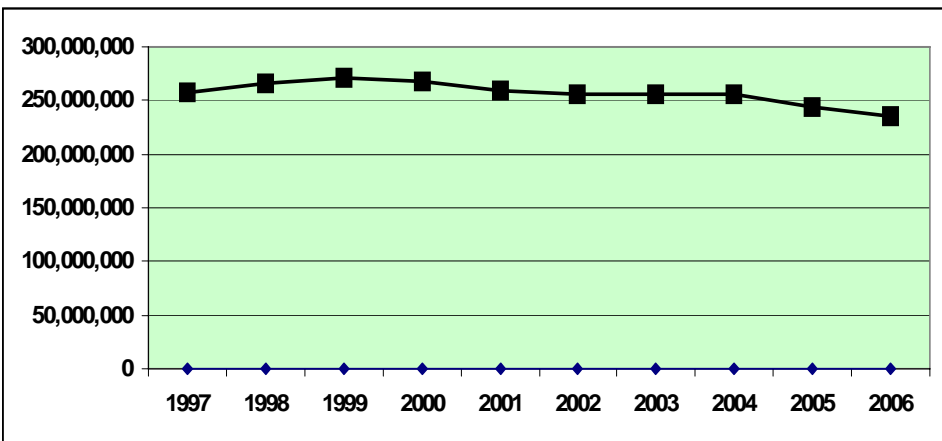


10 Year History - Gross Receipts (amount wagered)



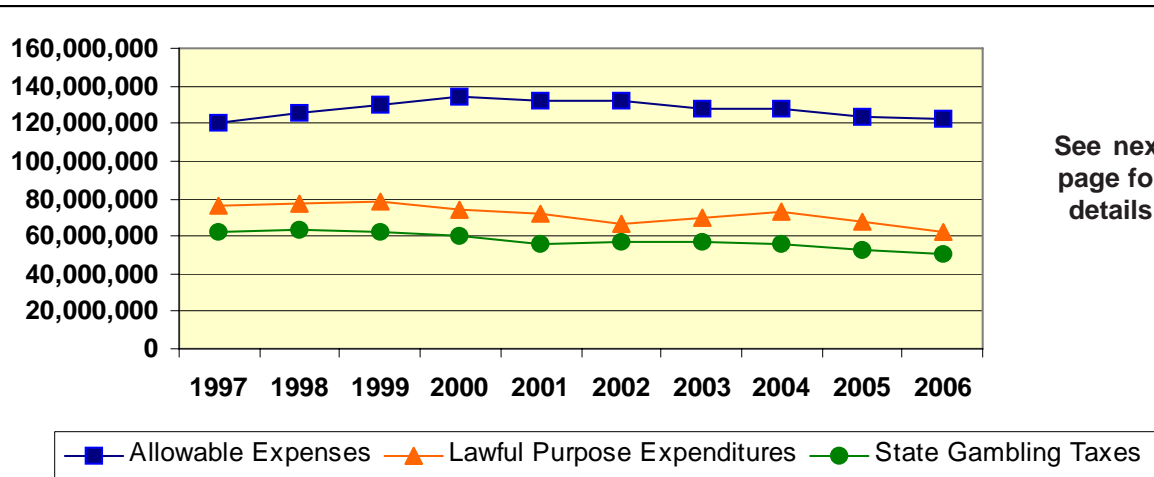
2006 - \$1,288,115,000
 2005 - \$1,328,672,000
 2004 - \$1,402,373,000
 2003 - \$1,418,250,000
 2002 - \$1,427,550,000
 2001 - \$1,425,527,000
 2000 - \$1,477,919,000
 1999 - \$1,471,840,000
 1998 - \$1,433,349,000
 1997 - \$1,377,164,000

10 Year History - Gross Profits (net receipts)



2006 - \$235,564,000
 2005 - \$242,900,000
 2004 - \$256,113,000
 2003 - \$254,962,000
 2002 - \$255,473,000
 2001 - \$259,556,000
 2000 - \$268,197,000
 1999 - \$270,840,000
 1998 - \$266,154,000
 1997 - \$258,005,000

10 Year History - Use of Gross Profits



Ten Year History

CY	Gross Receipts	Prizes Paid	Gross Profits	Allowable Expenses	Lawful Purpose State Taxes	Lawful Purpose
2006	\$1,288,115,000	\$1,052,551,000	\$235,564,000	\$122,354,000	\$50,713,000	\$62,497,000
2005	1,328,672,000	1,085,772,000	242,900,000	123,196,000	52,322,000	67,382,000
2004	1,402,373,000	1,146,260,000	256,113,000	127,293,000	56,146,000	72,674,000
2003	1,418,250,000	1,163,288,000	254,962,000	128,237,000	56,773,000	69,952,000
2002	1,427,550,000	1,172,077,000	255,473,000	131,860,000	56,562,000	67,051,000
2001	1,425,527,000	1,165,971,000	259,556,000	132,117,000	55,438,000	72,001,000
2000	1,477,919,000	1,209,722,000	268,197,000	134,002,000	60,550,000	73,645,000
1999	1,471,840,000	1,201,000,000	270,840,000	130,034,000	62,655,000	78,151,000
1998	1,433,349,000	1,167,195,000	266,154,000	125,338,000	63,192,000	77,624,000
1997	1,377,164,000	1,119,159,000	258,005,000	120,414,000	61,765,000	75,826,000

Monthly Gross Receipts

State Gambling Taxes Collected (deposited - general fund)

Month	2006	2005	% Change	2006	2005	% Change
January	\$ 112,336,000	\$ 108,577,000	3.5	\$5,518,000	\$5,314,000	3.8
February	107,320,000	111,988,000	-4.2	5,608,000	5,784,000	-3.0
March	120,284,000	122,758,000	-2.0	6,630,000	6,822,000	-2.8
April	109,357,000	117,661,000	-7.1	6,184,000	6,679,000	-7.4
May	106,651,000	113,108,000	-5.7	6,242,000	6,576,000	-5.1
June	101,912,000	104,128,000	-2.1	6,204,000	6,362,000	-2.5
July	102,311,000	107,114,000	-4.5	2,244,000	2,407,000	-6.8
August	103,696,000	107,795,000	-3.8	2,846,000	2,879,000	-1.1
September	105,188,000	106,652,000	-1.4	3,353,000	3,374,000	-0.6
October	106,785,000	111,933,000	-4.6	3,939,000	3,981,000	-1.1
November	105,224,000	106,585,000	- 1.3	4,461,000	4,440,000	0.5
December	107,051,000	110,373,000	- 3.0	4,870,000	5,059,000	-3.7
Total	\$1,288,115,000	\$1,328,672,000	- 3.1	\$58,099,000	\$59,677,000	-2.6
				Refunded 7,386,000	7,355,000	0.4
				Net tax \$50,713,000	\$52,322,000	-3.1

1.7% Gross receipts tax on pull-tab and tipboard games (after tax refund)

CY06 \$20,447,000

CY05 \$21,036,000

Percent change -2.8%

8.5% Net receipts tax on bingo, raffles, and paddlewheels

CY06 \$1,904,000

CY05 \$1,832,000

Percent change 3.9%

Combined receipts tax, a progressive tax on pull-tab and tipboard gross receipts and interest income that is calculated on a fiscal year basis

CY06 \$28,362,000

CY05 \$29,454,000

Percent change -3.7%