

09 - 0899

FY 2009 Annual Report



SOUTHWEST REGIONAL DEVELOPMENT COMMISSION

September 1, 2009

County Wind Work Group Looks at Impacts



A semi hauling a tower section struggles on the I-90 ramp in Worthington. Photo courtesy Brian Korthals/Worthington Daily Globe.

The SRDC Transportation and Energy staff has been providing assistance to the County Wind Work Group, a subcommittee of County Engineers from Southern Minnesota (MN/DOT Districts 6, 7, 8) and District 7 Permit and planning staff. This subcommittee has been examining infrastructure impacts (over-dimension vehicles, spring weight restrictions, ditches and drainage issues, road and bridge wear) and sharing experiences with past development and how issues were dealt with (best practices). District 7 staff shared the state perspective as well as understanding of

state requirements.

Initially, the project was to develop a uniform template of standards specifically related to wind farm development, it became apparent that an increased awareness of what the existing processes, communication, requirements and activities are involved with wind farm development, the timing, development schedules, and related activities such as transmission lines and power substations, etc was required. Several avenues are being worked

on including a checklist for engineers to use with developers, identification of best practices; a matrix of county contacts with permits needed for southern Minnesota counties is posted on the RMEB website, as well as an examination of roadway consumption as it relates to development.

SRDC staff facilitates communication by notifying the County Engineers and Zoning Administrators in the Region and the Rural Minnesota Energy Board Counties as well as MN Regional Development Commission area contacts when state permitted wind projects are in their areas so they can notify their respective County officials; so they can work with the developers to identify preferred haul routes, local permits, processes and requirements.

For more information:
<http://www.rmeb.org/Southern%20Minnesota%20PZwebsites.pdf>

Special points of interest:

- SRDC ELECTS OFFICERS
- PROJECTS OF THE YEAR ANNOUNCED
- FY2010 BUDGET
- LOAN FUNDS AVAILABLE.

Inside this issue:

SLAYTON MNRAAA OFFICE CONTINUES TO ASSIST SENIORS	2
VOLUNTEERS FUEL RSVP OF SW MN	2
ECONOMIC DEVELOPMENT APPLICATIONS TAKE CENTER STAGE	3
PROJECTS OF THE YEAR AWARDED	4
FY09 YEAR END PROJECTIONS	5
COMMISSION MEMBERS	7
STAFF DIRECTORY	8

FY 2009 Annual Report



1-800-333-2433

www.MinnesotaHelp.info

Slayton MNRAAA Office Continues to Assist Seniors

The Slayton office of the Minnesota River Area Agency on Aging®, Inc. provides services to seniors and their caregivers via the Senior LinkAge Line®. In 2008, there were a total of 23,713 contacts to the Senior LinkAge Line® serving 13,505 unduplicated callers.

The Senior LinkAge Line® continued to be instrumental with Medicare Part D comparisons and enrollments in 2008. Medicare beneficiaries were able to call the Senior LinkAge Line®

for telephone assistance or could meet individually with staff or trained counselors.

Volunteers continue to be a vital part of the Senior LinkAge Line®. Each volunteer completes an initial 18 hour Core Body of Knowledge course and receives a minimum of 12 hours/year thereafter. With the support of the call center staff and volunteers we have had another successful year in providing assistance. Volunteers from the Slayton office contributed 916.5

hours in the 2009 fiscal year. Contact staff if you or someone you know is interested in becoming a volunteer.

In January 2009 a Live Chat option was added to www.MinnesotaHelp.info (aka MinnesotaHelp NOW!). Client Service Center staff in the Slayton office is responsible for statewide requests via live chat and email. Between 1/14/2009 and 6/30/2009 the Slayton office staff answered 595 chats and 356 emails.

"IN 2008,

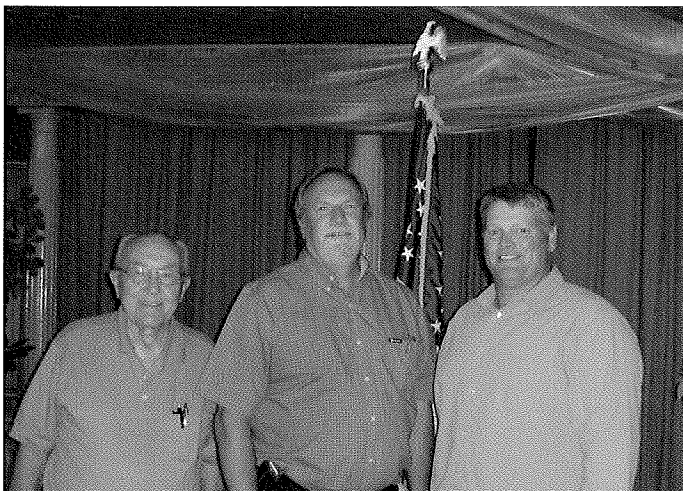
APPROXIMATELY
2000
VOLUNTEERS
PROVIDED OVER
215,000 HOURS
OF SERVICE"

Volunteers Fuel RSVP of SW MN

The Southwest Regional Development Commission provides administrative, finance and support services to RSVP of SW MN as a member of the Joint Powers Board. RSVP of SW MN covers the counties of: Cottonwood, Lincoln, Murray, Nobles, Redwood and Rock. In 2008, approximately 2,000 volunteers provided

over 215,000 hours of service. RSVP provides more than just volunteer recruitment and placement for eligible stations. RSVP of SW MN also offers caregiver education and support (including Powerful Tools for Caregivers and respite), osteoporosis reversal/prevention exercise programs (known as Bone Builders), early memory loss consultation and has been

instrumental in getting the Second Harvest food trucks to SW MN. Many of the programs that RSVP of SW MN focuses on fit nicely with the aging program's focus areas of chronic disease management, communities for a lifetime and caregiver support. For more information please contact Robin Weis at 507-836-, ext. 112 or e-mail at srlinkage@swrdc.org



SRDC Elects Officers

The SRDC elected officers at its annual meeting in July. Elected as Chair for a second two year term was Cottonwood County Commissioner Gary Sorenson (right); elected as Secretary for a one year term was Worthington Alderman Lyle Ten Haken, (middle); and elected Treasurer for a one

year term was Lincoln County Commissioner Larry Hansen, (left). Also elected was Nobles County Commissioner David Benson as Vice-Chair, (not pictured).

Economic Development Applications take Center Stage

It has been a very active year for the SRDC's economic development staff Nan Larson writing grant applications related to economic growth. SRDC is a Designated Development District from the U.S. Department of Commerce—Economic Development Administration (EDA). As a result, we not only apply for and receive annual planning grant funds to do work in economic development, but also prepare grant applications to meet EDA's strict standards.

An application was prepared on behalf of the City of Pipestone for water and sewer projects with a total project cost estimated of \$9 million. EDA funds are being

sought for \$2.2 million. Staff also prepared an application on behalf of the City of Worthington and its partners to obtain funds to complete a regional Testing and Training Center for bioscience and renewable energy as well as a small business incubator for small or start-up companies to grow in the bioscience field. The total project cost is estimated at \$2.9 million at this time, and approximately \$780,000 is being sought from EDA. The application is in the review process currently. The third application that was submitted to EDA this past year was on behalf of the Agricultural Utilization Research Institute (AURI). The AURI application was

submitted for a National EDA grant program called Regional Innovation Systems Research Project. The effort is entitled the Upper Midwest Rural Prosperity project, which would focus its research on issues facing rural economies. The total estimated project cost is \$514,690 with funds of \$300,000 being sought from EDA. This project has not yet been awarded due to changes in Department of Commerce EDA Administration.

Units of government or non-profit groups related to economic development that are interested in applying for EDA funds should contact Nan Larson for further eligibility information.



The incubator shell building now partially occupied by Wind Energy Systems

Joint Effort Delivers Unique Local Results

In 2007, Nobles County approached SRDC to revise their groundbreaking comprehensive water resources management plan to serve the County, Nobles Soil & Water Conservation District (SWCD), Kanaranzi-Little Rock Watershed District and Okabena-Ocheda Watershed District to meet new Minnesota Board of Water and Soil Resources (BWSR) requirements, which had been significantly changed.

Nobles SWCD and Nobles County Environmental Services brought together a Local Water Management Task Force that included participants from cities and

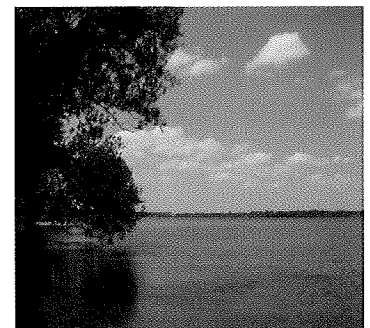
the County, watershed district staff and supervisors, rural water, the Farm Bureau and Farmers Union, private employers and a lake association. BWSR, MPCA, and other state agencies also offered assistance throughout the project. This group met six times over the course of about a year to consider concerns raised by local citizens, as well as local and state government. Priority concerns included; Surface Water Quality, Drainage Management and Public Water Supplies.

The Task Force prioritized potential action items to address these concerns, such

as education about water resources and agricultural best management practices, financial incentives for conservation practices, and flood mitigation projects.

The end result of the joint planning effort is a new Nobles Local Water Management Plan 2009-2018, which preserves the hard work of the original water plan while meeting new state requirements. The plan will serve as the local water plan for BWSR funding, the comprehensive plan for the SWCD, and the watershed management plan for both watershed districts.

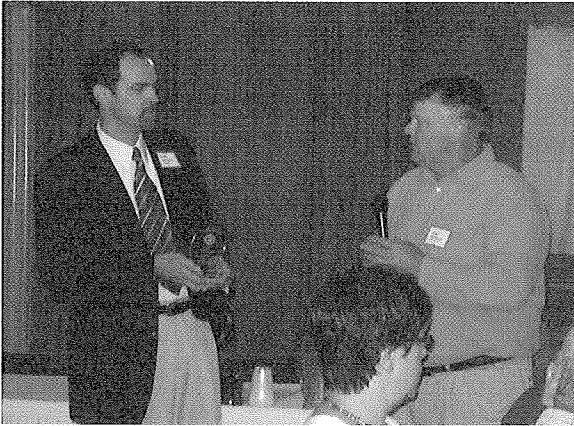
“AN APPLICATION WAS PREPARED ON BEHALF OF THE CITY OF PIPESTONE FOR WATER AND SEWER PROJECTS WITH A TOTAL PROJECT COST ESTIMATED OF \$9 MILLION.”



The south shore of Lake Okabena in Nobles County. John Shepard, AICP.

FY 2009 Annual Report

Projects of the Year Awarded



Chair Sorenson presents a Project of the Year Award to Scott Johnson from SW Mental Health

At its Annual Meeting in July, the SRDC gave two project of the year awards. The first was presented to Scott Johnson, Executive Director of the Southwestern Mental

Health Center for their work in developing the Unity House, a residential treatment facility in Worthington.

This project demonstrated how the SRDC works in collaboration with other local and regional entities to bring much needed services to the region. Funding for the Unity House was partially provided through the efforts of SRDC Chair Gary Sorenson, Executive Director Jay Trusty

and Deputy Director Nan Larson in working with former Senator Norm Coleman's office to receive federal funding.

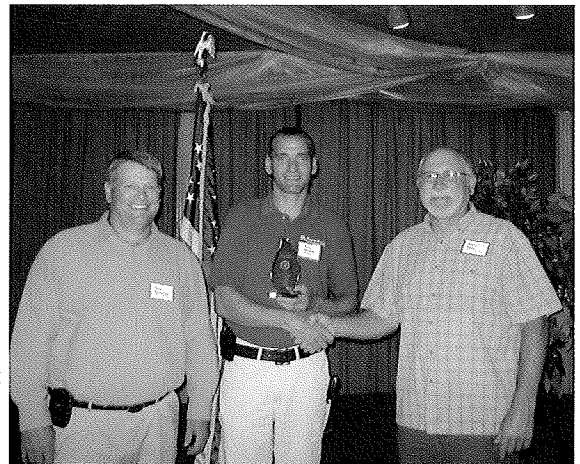
Construction on Unity House is scheduled to begin in September of 2009 according to Johnson and when completed will house up to ten patients as they transition from inpatient treatment.

“MAYNARDS SAW TO THE NEEDS OF ITS CUSTOMERS BY OFFERING FREE TRIPS TO OTHER MAYNARDS STORES”

The second award went to Maynards Foods of Westbrook in recognition of their extraordinary commitment to southwest Minnesota.

During reconstruction of their Westbrook store following a devastating fire, Maynards saw to the needs of its customers by offering free trips to other Maynards stores in other communities, thus allowing residents to

have access to a grocery store without having to travel long distances. Accepting for Maynards was Westbrook Store Manager Tony Staples.



Chair Sorenson and Commissioner Kolar present a Project of the Year Award to Tony Staples from Maynards

Revolving Loan Funds Available



The SRDC currently has loan funds available for businesses from its EDA Revolving Loan Fund. The purpose of the loan fund is to provide gap financing to assist start-up or existing retail, service, manufacturing, and distribution businesses with fixed asset, working capital, and real estate

financing.

Since its inception in 1995 the SRDC's Revolving Loan Fund has written 107 loans totaling \$5,715,797, leveraging \$23,878,123 in private funding, creating 576 jobs and retaining 871 jobs.

Whether you are a business owner looking to expand or

an entrepreneur looking to start a new business, the SRDC Revolving Loan Fund may be able to assist you. For further information please contact Deputy Director Nan Larson at 507-836-8547 or email her at nanlarson@swrdc.org

FY 2009 Annual Report

	FY09 Final Budget	Year End Projections
Revenues		
Taxes	275,000.00	283,297.33
Contract for Services	206,921.00	208,970.55
MN/DOT	50,000.00	50,000.00
Economic Development Administration	54,628.00	54,628.00
MNRAAA-Federal-Admin/Pdc	58,920.00	60,478.37
MNRAAA-Federal-I&A	230,782.00	198,284.59
MNRAAA-State-I&A	137,276.00	146,964.18
Eldercare Dev. Partnership	37,965.00	39,031.00
CERTS Funds	80,199.00	94,889.70
Department of Public Safety-Hazard	44,560.00	39,950.62
Commission Vehicle Receipts	21,000.00	22,392.33
Interest & Miscellaneous	18,685.00	18,425.49
Reserves-Capital Equipment	13,875.00	15,778.69
Total Revenues	1,229,811.00	1,233,090.85
Expenditures		
Committee Expenses	48,100.00	43,943.65
Salaries & Fringe	911,598.00	891,993.19
Travel	85,550.00	73,937.62
Office Space Costs	48,200.00	43,222.31
Postage	10,900.00	10,003.15
Communications	10,978.00	8,439.61
Printing/Publication	10,862.00	9,838.07
Supplies	17,265.00	18,155.31
Insurance	2,500.00	3,220.54
Depreciation-Equipment	15,432.00	14,798.51
Computer Expenses	9,528.00	8,982.08
Professional Services	11,550.00	12,428.05
Program Match	12,905.00	10,525.50
Other	9,310.00	9,496.42
CERTS Mini-grants	40,000.00	47,787.95
Equipment	12,875.00	15,778.69
Debt Service-Principle & Interest	11,800.00	11,800.00
Building Lease Payment	9,628.00	9,627.90
Total Expenditures	1,278,981.00	1,243,978.55
Revenues Over (Under) Expenditures	(49,170.00)	(10,887.70)

FY 2009 Annual Report

SOUTHWEST REGIONAL DEVELOPMENT COMMISSION FY10 Budget

July 1, 2009 - June 30, 2010

Revenues

Tax Levy	281,000
MNRAAA-Adm/Pdc Funds	77,337
MNRAAA-Information & Assistance Funds	225,284
Client Service Center Funds	141,194
MNRAAA-Eldercare Development Partnership-EDP	39,031
Economic Development Administration	63,628
MN Department of Transportation	50,000
MN Department of Transportation-Transit Office	16,231
Current Contracts	178,454
Dept. Public Safety-Hazard Mitigation	63,188
CERTS Funds-MN Project-Blandin, DOC-Xcel & MPCA	0
Interest Earned & Miscellaneous	10,100
Reserves used for Equipment/Building Purchases	16,000
Total Revenues	<u>1,161,447</u>

POTENTIAL
CONTRACTS OR
GRANTS
CURRENTLY IN
PROCESS EQUAL
\$86,869-
\$104,869 AND
ARE NOT
INCLUDED IN THIS
BUDGET

Expenditures

Committee Expense	43,600
Salaries & Fringe	951,731
Staff Travel	67,251
Office Space	48,000
Postage	11,610
Communications	11,900
Print/Publication	15,760
Supplies-Mtg/Wkshp Expenses	14,870
Insurance	3,200
Depreciation (Non-building)	18,791
Audits	5,400
Computer	8,828
Equipment	16,000
Other	8,854
Consultant/Contracted Services/Legal	3,550
MNRAAA, Inc. match	12,905
Certs minigrants	0
Debt Service-Principal & Interest	11,800
Office Building Principal Payment	10,167
Total Expenditures	<u>1,264,217</u>
Overall Balance	<u>-102,770</u>

Reserve for FY10 bond payments 6/30/09 est	199,000
Tax Revenue (Bond) - 1 year	232,080
Allowance for delinquencies (5%)-2.5%PY	-5,802
Bond Payment -August, 2009	-11,598
Bond Payment-February, 2010	-206,597
Reserve for Future Bond Payments 6/30/10	<u>207,083</u>

FY 2009 Annual Report

FY2009 PROJECT REVIEWS

During Fiscal Year 2009 the Southwest Regional Development Commission reviewed 31 projects from within the Region to avoid duplication and insure wise use of public funds. If you are interested in receiving a complete listing of the project reviews for FY09, please contact the SRDC office.

Audited Governmental Activities for the Year Ended June 30, 2008

Revenues

Program Revenues	
Charges for Services & Other	255,859
Operating Grants	608,408
General Revenues	
Property Taxes—General	275,796
Property Taxes—Debt Service	234,135
Interest Revenues	123,984
Total Revenues	1,498,182
Expenses	
Government Activities	1,286,789
Total Expenses	1,286,789
Change in Net Assets	211,393
Beginning Net Assets	1,566,829
Ending Net Assets	1,778,222

FISCAL YEAR 2009 SOUTHWEST REGIONAL DEVELOPMENT COMMISSION MEMBERS

Rocky Kolar*	Cottonwood County Municipalities
Darrell Holmberg	Cottonwood County Town Boards
Gary Sorenson**	Cottonwood Co Commissioners
Darrel Hage*	Jackson County Municipalities
Richard Peterson	Jackson County Town Boards
Dave Henkels	Jackson County Commissioners
Mary Meneely	Lincoln County Municipalities
Eloise Hauschild	Lincoln County Town Boards
Larry Hansen**	Lincoln County Commissioners
Cynde Livingston	Lyon County Municipalities
Lori Grant	Lyon County Town Boards
Bob Fenske*	Lyon Co Commissioners
Miron Carney	Murray County Municipalities
Charles V. Swan	Murray County Town Boards
Bill Sauer*	Murray County Commissioners
Chad Cummings	Nobles County Municipalities
Paul Langseth	Nobles County Town Boards
David Benson**	Nobles County Commissioners
Harry L. Hansen	Pipestone County Municipalities
Wally Bucher	Pipestone County Town Boards
Marv Tinklenberg*	Pipestone County Commissioners
Marlo Sander	Redwood County Municipalities
Werner Fischer*	Redwood County Town Boards
Gary Dahms	Redwood Co Commissioners
Fabian Deutsch	Rock County Municipalities
Steve Top	Rock County Town Boards
Robert Jarchow*	Rock County Commissioners
Bob Byrnes**	City of Marshall
Lyle TenHaken**	City of Worthington
Dan Zimansky*	Region Eight School Boards
Vacant	Region Eight School Boards
Adolfo Avila	Region Eight Cultural Diversity
Dan Snobl	SW Center for Independent Living
Sandy Demuth	SW MN Private Industry Council
Richard Shrubbs	Southwest MN Higher Education
Craig Myers	Health & Human Services

** Indicates Current & FY2009 Executive Comm. Members

*Indicates Current SRDC Board Members

Thank You to the following SRDC Commissioners whose terms expired in FY2009: Joanne Myrvik, Craig Rubis, Eugene Short, Liz Struve, Vern VanderPol, Steve Thovson, John Faber and Tim Blume

The FY 2008 Audit was conducted by Richard W. Holmberg, LTD, Certified Public Accountant, Marshall, Minnesota. The auditor's report expresses an unqualified opinion on the General Purpose Financial Statements of the Southwest Regional Development Commission.



Providing professional expertise and leadership to enhance regional opportunities

SOUTHWEST REGIONAL DEVELOPMENT COMMISSION

2401 Broadway
 Avenue
 Slayton,
 MN 56172

Phone:
 507-836-8547
 Fax:
 507-836-8866
 E-mail:
 srdc@swrdc.org



Rear from left: Jay Trusty, Doreen Veenhuis, Linda Tobias, Rhonda Wynia, Julie Stewart, Dianne Crowley, John Shepard. Front from left: Robin Weis, Helen Brinks, Gail Radke, Mandy Mesman. Not pictured, Nan Larson, Annette Bair, Kathy Schreiber.

CURRENT SRDC STAFF MEMBERS

<u>Name</u>	<u>Title</u>	<u>Email</u>	<u>Extension</u>
Jay Trusty -----	Executive Director	execdir@swrdc.org	106
Nan Larson -----	Deputy Director	nanlarson@swrdc.org	108
Robin Weis -----	Aging Program Director	srlinkage@swrdc.org	112
Annette Bair -----	Physical Development Director	phydev@swrdc.org	101
Dianne Crowley -----	Finance Director	dcrowley@swrdc.org	104
John Shepard, AICP -----	Development Planner	jshepard@swrdc.org	103
Gail Radke -----	Senior Outreach Specialist	gailr@swrdc.org	202
Rhonda Wynia -----	Administrative Specialist	rwynia@swrdc.org	114
Helen Brinks -----	Account Specialist	hbrinks@swrdc.org	116
Linda Tobias --	Information & Referral Specialist III	lindat@swrdc.org	109
Julie Stewart --	Information & Referral Specialist II	julies@swrdc.org	203
Kathy Schreiber -----	Administrative Assistant II	srdc@swrdc.org	110
Doreen Veenhuis -----	Administrative Assistant I	doreenv@swrdc.org	115
Mandy Mesman -----	MNRAAA Contract Staff	MandyM@swrdc.org	204