

# The Minnesota Utility Data Book

## A Reference guide to Minnesota electric and natural-gas utilities 1965-2007



MINNESOTA  
DEPARTMENT OF  
COMMERCE

<b>Introduction.....</b>	<b>3</b>
<b>Section I: Electric Utilities.....</b>	<b>4</b>
Overview.....	4
Introduction to Electric Tables.....	5
Table 1: Minnesota Historical Electric Consumption.....	7
Table 1A: Electric Consumption for Investor-Owned Utilities.....	8
Table 1B: Electric Consumption for Cooperative Utilities.....	9
Table 1C: Electric Consumption for Municipal Utilities.....	10
Table 2: Number of Minnesota Electric Customers.....	12
Table 2A: Number of Electric Customers for Investor-Owned Utilities.....	14
Table 2B: Number of Electric Customers for Cooperative Utilities.....	15
Table 2C: Number of Electric Customers for Municipal Utilities.....	16
Table 3: Minnesota Electric Sales Revenue.....	17
Table 3A: Electric Sales Revenue for Investor-Owned Utilities.....	18
Table 3B: Electric Sales Revenue for Cooperative Utilities.....	19
Table 3C: Electric Sales Revenue for Municipal Utilities.....	20
Table 4: Minnesota Electric Consumption by Utility.....	21
2006 Electric Consumption for Investor-Owned Utilities (Megawatt-Hours).....	21
2006 Electric Consumption for Cooperative Utilities (Megawatt-Hours).....	21
2006 Minnesota Electric Consumption for Municipal Utilities.....	24
Table 5: Number of Minnesota Electric Customers by Utility.....	28
2006 Number of Minnesota Electric Customers for Investor-Owned Utilities.....	28
2006 Number of Minnesota Electric Customers for Cooperative Utilities.....	28
2006 Number of Minnesota Electric Customers for Municipal Utilities.....	31
Table 6: Minnesota Electric Sales Revenue by Utility.....	35
2006 Minnesota Electric Sales Revenue for Investor-Owned Utilities.....	35
2006 Minnesota Electric Sales Revenue for Cooperative Utilities.....	35
2006 Minnesota Electric Sales Revenue for Municipal Utilities.....	38
Table 7: Minnesota Residential Electric Space Heating Customers.....	42
2006 Minnesota Electric Space Heating Customers for Investor-Owned Utilities.....	42
2006 Minnesota Electric Space Heating Customers for Cooperative Utilities.....	42
2006 Minnesota Electric Space Heating Customers for Municipal Utilities.....	45
Table 8: Minnesota Electric Consumption by County.....	49
Table 9: Utility-Owned Electric Generating Plants Serving Minnesota.....	51
Table 10: Net Generation and Fuel Consumption for Utility-Owned Electric Generating Plants Serving Minnesota.....	85
<b>Section II: Natural Gas Utilities.....</b>	<b>124</b>
Overview.....	124
Introduction to Natural Gas Tables.....	126
Table 11: Total Minnesota Historical Natural Gas Consumption.....	127
Table 12: Number of Minnesota Natural Gas Customers.....	129
Table 13: Minnesota Natural Gas Consumption by Company.....	130
Table 14: Minnesota Natural Gas Customers by Company.....	132

Table 15: Minnesota Natural Gas Revenue by Company .....	134
<b>Section III: Attachments .....</b>	<b>137</b>
General Notes on Data .....	137
Glossary of Terms and Abbreviations .....	138

## Introduction

The Minnesota Department of Commerce regulates the financial services industries and promotes and implements policies regarding energy and telecommunications. We work with other state agencies to provide education, information and programs to the public and work to enhance Minnesota's environment and quality of life. This report is one tool in that process.

The *Minnesota Utility Data Book* compiles information reported by electric and natural-gas utilities serving Minnesota. Most of Minnesota's energy use occurs through service provided by various investor-owned, cooperative and municipal and private utilities. To track energy trends, the Minnesota Department of Commerce's Office of Energy Security uses data in its Regional Energy Information System (REIS), which contains information collected through Minnesota Rules parts 7610.0100 to 7610.1130.

The 2007 *Minnesota Utility Data Book* provides aggregate information reported by Minnesota utilities through 2007. It also provides data reported by individual companies for the year 2007.

The tables in this report may use certain assumptions that are not obvious to the reader. Where feasible, this report lists assumptions either at the bottom of relevant pages or in the General Notes on Data section.

Staff contributing to the preparation of this report include Steve Loomis, Theresa Staples, Susan Medhaug, and Rochelle Barnhart. If you have any questions about the report, please contact Susan Medhaug at 651-297-2103.

We hope that the 2007 *Minnesota Utility Data Book* will promote discussion, inquiries and interest about energy consumed through Minnesota's natural-gas and electric utilities. To obtain this report in an alternative format (i.e., large print, Braille, CD-ROM), please see our website at <http://www.commerce.state.mn.us> or call our Energy Information Center at 651-296-5175. If you are outside the Twin Cities area, please dial 1-800-657-3710. Our TAM toll free number is 1-800-657-3599. The Information Center may also be contacted through e-mail at: [energy.info@state.mn.us](mailto:energy.info@state.mn.us).

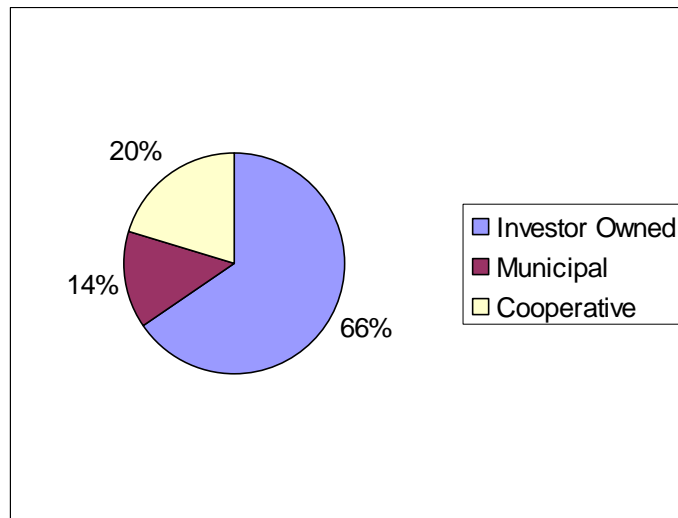
## Section I: Electric Utilities

### Overview

Minnesota's electric utilities are classified as investor-owned utilities (IOUs), cooperative utilities (co-ops), or municipal utilities (munis). The Minnesota Public Utilities Commission regulates the rates of all IOUs. Co-ops' and munis' rates are not regulated unless they choose such regulation. (Dakota Electric Association is the only utility that has chosen such regulation.)

As shown below, of the electricity sold to retail customers by electric utilities, most of Minnesota's electric consumers buy their electricity from IOUs. The remaining customers buy almost equally from co-ops and munis.

Figure 1: Minnesota Electric Consumption by Type of Utility



There are five investor-owned electric utilities serving customers in Minnesota. In 2007 there were 47 distribution cooperatives and 126 municipal electric utilities serving customers in Minnesota.

## Introduction to Electric Tables

The tables in this section provide both aggregate and individual company information reported by electric utilities serving Minnesota. Tables 1 through 3 provide overall electric consumption, numbers of electric customers and electric revenues in Minnesota. These tables also show this information for the general types of companies: investor-owned utilities, cooperative utilities, and municipal utilities.

According to Table 1, 2007 electric consumption in the residential sector was slightly lower than 2006 consumption. As Figure 2 indicates, when adjusted for weather, electric consumption per residential customer is showing a distinct upward trend.

Figure 2: Weather-Normalized Electric Use Per Residential Customer

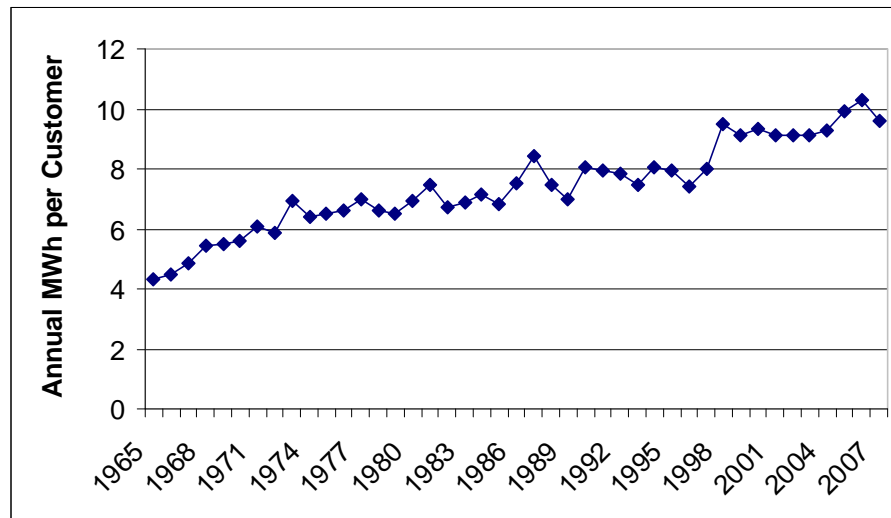


Table 4 through Table 7 provide 2007 electric consumption, numbers of electric customers, electric revenues, and data on residential space heating reported by each electric utility serving Minnesota. Table 8 lists utility megawatt-hours sold at retail to Minnesota customers by county and provides each county's consumption and population rank (1 represents the highest total consumption/population and 87 represents the lowest).

Table 9 contains general descriptions of utility-owned generation plants serving Minnesota during the 2007 calendar year;

Table 10 provides net generation and fuel consumption for utility-owned generation plants producing energy during calendar year 2007 for the following utilities:

Adrian Public Utilities	Marshall Municipal Utilities
Alexandria Light & Power	Melrose Public Utilities
Alliant Energy-Interstate Power Co.	Minnesota Power
Austin Utilities	Minnkota Power Cooperative
Benson Municipal Utilities	Moorhead Public Service
Blooming Prairie Public Utilities	Moose Lake Water and Light Comm.
Blue Earth Light & Water Dept.	Mora Municipal Utilities
Dairyland Power Cooperative	New Prague Utilities Commission
Delano Municipal Utilities	New Ulm Public Utilities
Detroit Lakes Public Utility	North Branch Water & Light
East Grand Forks Water & Light Dept.	Otter Tail Power Company
Elk River Municipal Utilities	Princeton Public Utilities
Fairfax Municipal	Redwood Falls Public Utilities
Fairmont Public Utilities	Rochester Public Utilities
Glencoe Light & Power Commission	St. James Municipal Light & Power
Grand Marais Public Utilities	Sleepy Eye Public Utility
Granite Falls, City of	Southern MN Municipal Power Agency
Great River Energy	Spring Valley Public Utilities Comm.
Hastings, City of	Springfield Public Utilities
Hawley Public Utilities	Steele Waseca Cooperative Electric
Hibbing Public Utilities Commission	Thief River Falls Municipal Utilities
Hutchinson Utilities Commission	Two Harbors, City of
Janesville Municipal Utility	Virginia Dept. of Public Utilities
Kenyon Municipal Utilities	Warren, City of
Lake Crystal Municipal Utilities	Wells Public Utilities
Lakefield, City of	Willmar Municipal Utilities
Lanesboro Public Utilities	Windom Municipal Utility
Litchfield Public Utilities	Worthington Public Utilities
Madelia Municipal Light & Power	Xcel Energy

**Table 1: Minnesota Historical Electric Consumption**

Total Electric Consumption for Minnesota (Gigawatt-Hours)

Year	Farm	Non-Farm Residential	Commercial	Industrial	Total
1965	1,526	4,036	2,552	4,804	12,917
1967	1,710	4,632	3,005	6,157	15,503
1969	1,949	5,588	3,603	8,027	19,166
1971	2,250	6,381	4,185	9,201	22,017
1973	2,472	7,029	4,781	11,309	25,591
1975	2,891	7,651	5,028	11,281	26,852
1976	3,107	7,997	5,473	12,236	28,813
1977	3,452	7,855	5,524	12,562	29,393
1978	3,375	8,538	5,767	14,916	32,596
1979	3,527	8,777	6,004	16,217	34,524
1980	3,351	8,988	6,056	15,704	34,098
1981	3,294	8,910	6,094	16,142	34,439
1982	3,509	9,320	6,408	14,684	33,921
1983	3,447	9,676	6,599	16,046	35,769
1984	3,517	9,682	7,067	17,960	38,226
1985	3,502	9,908	7,290	17,886	38,586
1986	3,517	10,169	7,488	17,442	38,616
1987	3,397	10,490	7,863	18,919	40,669
1988	3,609	11,657	8,397	22,090	45,753
1989	3,689	11,265	9,293	22,619	46,866
1990	3,560	11,475	9,626	23,436	48,097
1991	3,380	12,436	9,048	23,951	48,815
1992	2,910	11,761	9,189	23,429	47,289
1993	2,962	12,583	9,270	24,288	49,104
1994	2,753	13,296	9,667	25,335	51,051
1995^	2,979	14,101	10,163	26,701	53,964
1996	3,148	14,152	10,883	27,046	55,229
1997	3,033	14,169	10,832	27,825	55,859
1998	2,911	14,584	11,098	28,382	56,975
1999	2,930	15,170	11,717	27,866	57,683
2000	2,956	15,738	12,224	29,043	59,962
2001*	2,995	16,446	20,675	20,396	60,511
2002	2,969	17,478	19,969	21,948	62,364
2003	2,868	17,777	19,849	22,146	62,641
2004	3,251	17,316	20,107	23,187	63,867
2005	3,025	18,744	21,638	23,161	66,567
2006	3,006	19,096	22,261	23,667	68,029
2007	3,067	19,673	22,450	23,967	69,159



**Table 1A: Electric Consumption for Investor-Owned Utilities**

## Electric Consumption (Gigawatt-Hours)

Year	Farm	Non-Farm Residential	Commercial	Industrial	Total
1965	207	3,076	1,734	4,360	9,378
1967	224	3,521	2,049	5,660	11,455
1969	238	4,236	2,469	7,392	14,335
1971	257	4,760	2,842	8,378	16,237
1973	267	5,156	3,178	10,318	18,920
1975	286	5,527	3,280	10,199	19,291
1976	294	5,709	3,548	11,046	20,597
1977	301	5,662	3,570	11,227	20,760
1978	298	5,881	3,726	13,487	23,391
1979	314	5,985	3,867	14,697	24,862
1980	317	6,085	3,961	14,120	24,482
1981	345	5,960	3,980	14,473	24,758
1982	361	6,208	4,244	12,915	23,728
1983	354	6,497	4,298	14,198	25,347
1984	358	6,464	4,550	16,053	27,425
1985	352	6,593	4,697	15,909	27,551
1986	350	6,777	4,804	15,298	27,229
1987	334	6,989	5,025	16,710	29,058
1988	347	7,786	5,365	19,664	33,162
1989	339	7,401	6,117	20,067	33,925
1990	344	7,445	6,257	20,818	34,864
1991	359	7,842	5,592	21,089	34,882
1992	116	7,442	5,712	20,425	33,695
1993	119	7,817	5,687	21,061	34,684
1994	77	8,065	5,952	21,886	35,981
1995	78	8,615	6,218	23,099	38,009
1996	78	8,520	6,811	23,231	38,640
1997	76	8,511	6,634	23,768	38,989
1998	74	8,764	6,699	23,993	39,531
1999	75	9,038	6,852	23,494	39,459
2000	74	9,372	7,279	24,270	40,995
2001*	76	9,654	15,516	15,598	40,843
2002	73	10,185	14,650	17,005	41,912
2003	108	10,210	14,479	16,978	41,774
2004	118	9,977	14,791	17,643	42,530
2005	121	10,615	16,228	17,259	44,223
2006	119	10,654	16,624	17,487	44,884
2007	119	10,969	16,733	17,593	45,415

**Table 1B: Electric Consumption for Cooperative Utilities**

## Electric Consumption (Gigawatt-Hours)

Year	Farm	Non-Farm Residential	Commercial	Industrial	Total
1965	1,306	201	150	57	1,714
1967	1,473	259	177	74	1,983
1969	1,696	363	210	149	2,417
1971	1,976	490	264	200	2,930
1973	2,191	635	325	293	3,443
1975	2,590	759	363	338	4,049
1976	2,796	851	395	378	4,421
1977	3,134	722	402	437	4,694
1978	3,059	1,101	389	500	5,049
1979	3,193	1,203	400	563	5,359
1980	3,013	1,317	376	586	5,292
1981	2,927	1,384	392	629	5,332
1982	3,125	1,455	410	657	5,647
1983	3,070	1,474	498	625	5,667
1984	3,136	1,514	672	546	5,868
1985	3,129	1,588	713	556	5,986
1986	3,143	1,672	777	551	6,144
1987	3,040	1,723	844	588	6,196
1988	3,237	1,951	1,091	557	6,836
1989	3,326	1,951	1,173	587	7,036
1990	3,193	2,124	1,226	633	7,177
1991	3,002	2,577	1,298	712	7,590
1992	2,773	2,469	1,328	761	7,331
1993	2,807	2,810	1,419	823	7,859
1994	2,656	3,218	1,460	843	8,178
1995	2,879	3,350	1,609	898	8,736
1996	3,047	3,466	1,740	981	9,235
1997	2,936	3,502	1,821	1,062	9,320
1998	2,814	3,654	2,049	1,125	9,642
1999	2,832	3,896	2,280	1,119	10,127
2000	2,861	4,076	2,301	1,318	10,556
2001	2,900	4,391	2,432	1,346	11,069
2002	2,877	4,781	2,572	1,433	11,662
2003	2,909	4,878	2,614	1,587	11,988
2004	3,110	4,813	2,643	1,776	12,342
2005	2,883	5,429	2,667	1,957	12,937
2006	2,867	5,629	2,784	2,027	13,306
2007	2,923	5,913	2,968	2,154	13,957

**Table 1C: Electric Consumption for Municipal Utilities**

## Electric Consumption (Gigawatt-Hours)

Year	Farm	Non-Farm Residential	Commercial	Industrial	Total
1965	13	759	668	386	1,825
1967	13	852	778	423	2,065
1969	14	989	925	486	2,414
1971	17	1,130	1,080	623	2,849
1973	14	1,238	1,278	699	3,228
1975	16	1,366	1,386	745	3,512
1976	17	1,437	1,530	812	3,796
1977	17	1,471	1,552	898	3,938
1978	19	1,556	1,652	930	4,157
1979	20	1,589	1,737	957	4,303
1980	21	1,586	1,719	998	4,324
1981	22	1,566	1,722	1,040	4,350
1982	23	1,658	1,754	1,113	4,547
1983	23	1,705	1,803	1,224	4,755
1984	23	1,704	1,845	1,361	4,932
1985	22	1,727	1,880	1,421	5,049
1986	23	1,719	1,907	1,593	5,243
1987	23	1,778	1,993	1,621	5,415
1988	24	1,920	1,941	1,869	5,755
1989	23	1,914	2,003	1,965	5,905
1990	23	1,906	2,143	1,984	6,056
1991	20	2,016	2,158	2,150	6,344
1992	21	1,850	2,148	2,244	6,263
1993	37	1,956	2,164	2,404	6,561
1994	20	2,013	2,254	2,606	6,893
1995^	23	2,136	2,336	2,705	7,219
1996	22	2,166	2,331	2,834	7,353
1997	22	2,157	2,376	2,995	7,550
1998	22	2,165	2,349	3,265	7,802
1999	23	2,237	2,585	3,253	8,097
2000	21	2,291	2,644	3,455	8,410
2001	20	2,401	2,727	3,451	8,599
2002	20	2,513	2,747	3,509	8,789
2003	21	2,536	2,778	3,582	8,915
2004	23	2,526	2,674	3,768	8,995
2005	21	2,700	2,743	3,944	9,408
2006	19	2,814	2,853	4,154	9,839
2007	19	2,788	2,759	4,220	9,787

Notes for Table 1 through 1C

^For 1995, Barnesville Municipal Electric reported total consumption, not consumption by customer class.

\*Xcel Energy redefined its commercial and industrial customer classifications in 2001. Commercial = Small Commercial and Industrial requiring less than 1000 kW. Industrial = Large Commercial and Industrial requiring at least 1000 kW.

**Table 2: Number of Minnesota Electric Customers**

## Total Number of Electric Customers for All Minnesota Utilities

Year	Farm	Non-Farm Residential	Commercial	Industrial	Total
1965	182,634	907,946	126,583	6,296	1,223,459
1967	183,968	945,521	128,114	6,295	1,263,898
1969	188,194	994,230	128,791	6,390	1,317,605
1971	193,405	1,041,982	132,487	6,592	1,374,466
1973	199,334	1,100,014	137,467	6,711	1,443,526
1975	210,508	1,143,377	140,298	7,050	1,501,234
1976	214,495	1,168,812	143,221	7,153	1,533,769
1977	245,769	1,165,178	152,962	7,286	1,571,195
1978	227,972	1,223,595	154,089	7,720	1,613,365
1979	223,361	1,265,978	157,247	7,630	1,654,216
1980	213,669	1,300,534	159,499	7,938	1,681,640
1981	214,173	1,323,682	162,882	8,280	1,709,017
1982	216,228	1,336,314	164,789	8,509	1,725,840
1983	217,479	1,361,892	168,586	8,316	1,756,273
1984	218,519	1,385,883	173,001	8,171	1,785,574
1985	217,688	1,402,671	175,653	8,243	1,804,255
1986	219,261	1,429,570	182,959	9,773	1,841,563
1987	220,058	1,469,279	183,175	8,778	1,881,290
1988	221,326	1,505,857	185,693	8,956	1,921,832
1989	227,254	1,520,556	186,773	9,337	1,943,922
1990	226,962	1,546,818	190,508	9,973	1,974,261
1991	192,976	1,591,515	197,845	9,400	1,991,736
1992	177,054	1,616,882	196,290	14,235	2,004,462
1993	170,848	1,650,291	198,256	14,073	2,033,464
1994	154,529	1,701,134	203,786	13,680	2,073,129
1995	165,961	1,732,544	210,695	10,016	2,119,216
1996	174,090	1,747,628	217,803	10,125	2,149,646
1997	173,001	1,788,247	217,731	10,949	2,189,927
1998	173,891	1,814,547	221,844	11,875	2,222,159
1999	169,327	1,853,118	230,521	12,479	2,265,444
2000	171,664	1,877,092	230,334	11,524	2,290,611
2001*	163,043	1,921,332	244,987	5,208	2,334,570
2002	160,310	1,966,536	250,730	5,311	2,382,887
2003	165,383	1,997,741	253,769	6,026	2,422,938
2004	202,926	2,006,585	257,462	7,800	2,474,769
2005	159,956	2,060,519	253,807	7,634	2,481,916
2006	159,874	2,096,224	260,530	7,813	2,524,441
2007	159,926	2,111,580	269,294	8,084	2,548,882



**Table 2A: Number of Electric Customers for Investor-Owned Utilities**

Year	Farm	Non-Farm Residential	Commercial	Industrial	Total
1965	20,362	673,394	85,140	3,492	782,388
1967	19,682	699,106	84,826	3,650	807,264
1969	18,592	731,149	86,287	3,804	839,832
1971	17,678	759,814	88,277	3,921	869,690
1973	17,055	792,467	90,449	4,147	904,118
1975	16,532	818,759	92,216	4,301	931,808
1976	16,226	832,472	93,619	4,213	946,530
1977	17,108	840,143	102,756	4,475	964,482
1978	16,287	860,957	104,535	4,619	986,398
1979	16,240	882,200	106,274	4,899	1,009,613
1980	16,283	897,461	108,124	5,074	1,026,942
1981	17,388	908,504	110,114	5,123	1,041,129
1982	17,318	915,153	111,468	5,219	1,049,158
1983	17,431	930,135	114,321	5,213	1,067,100
1984	17,223	946,476	116,833	5,347	1,085,879
1985	16,204	953,019	118,113	5,427	1,092,763
1986	16,169	972,878	120,116	5,799	1,114,962
1987	15,867	993,950	123,638	5,970	1,139,425
1988	15,928	1,018,232	125,431	6,239	1,165,830
1989	15,844	1,024,483	125,126	6,496	1,171,949
1990	15,793	1,037,478	128,479	6,911	1,188,661
1991	7,466	1,049,354	131,660	6,776	1,195,256
1992	5,749	1,068,031	128,506	10,701	1,212,987
1993	5,699	1,074,498	129,250	10,928	1,220,375
1994	5,943	1,089,167	132,515	11,034	1,238,659
1995	6,047	1,104,346	137,574	7,322	1,255,289
1996	6,021	1,112,703	141,579	7,353	1,267,656
1997	5,992	1,139,620	140,953	8,073	1,294,638
1998	6,058	1,151,585	143,660	8,529	1,309,832
1999	6,113	1,165,707	152,742	9,036	1,333,598
2000	5,758	1,178,863	145,286	8,122	1,338,029
2001*	6,018	1,195,910	157,203	1,780	1,360,911
2002	2,981	1,222,164	162,223	1,789	1,389,157
2003	4,376	1,235,558	161,518	2,036	1,403,488
2004	5,098	1,255,489	165,030	2,036	1,427,653
2005	5,043	1,243,196	162,502	1,948	1,412,689
2006	4,951	1,262,933	165,581	1,924	1,435,389
2007	4,874	1,273,949	167,747	1,965	1,448,535

**Table 2B: Number of Electric Customers for Cooperative Utilities**

Year	Farm	Non-Farm Residential	Commercial	Industrial	Total
1965	159,424	73,667	14,403	497	247,991
1967	161,400	80,886	15,138	594	258,018
1969	166,741	91,890	14,218	704	273,553
1971	172,487	106,291	15,319	861	294,958
1973	179,475	123,780	16,516	1,011	320,782
1975	191,235	132,547	17,274	1,239	342,295
1976	197,093	138,870	17,616	1,725	355,304
1977	227,390	122,558	17,846	1,427	369,221
1978	210,382	155,397	15,684	1,808	383,270
1979	205,797	170,926	16,793	1,566	395,082
1980	196,289	189,164	17,628	1,747	404,828
1981	195,677	198,501	18,147	1,988	414,313
1982	197,569	203,107	18,549	1,982	421,207
1983	198,731	210,087	19,367	1,690	429,875
1984	199,924	215,399	20,463	1,272	437,058
1985	200,170	223,644	21,607	1,256	446,677
1986	201,664	233,389	22,282	1,435	458,770
1987	202,725	244,405	23,306	1,219	471,655
1988	203,806	253,648	23,591	996	482,041
1989	209,822	259,124	24,233	1,046	494,225
1990	209,533	270,282	24,590	1,105	505,510
1991	184,694	299,541	28,816	951	514,002
1992	169,765	308,760	29,613	1,390	509,528
1993	161,521	335,390	30,426	1,247	528,584
1994	147,083	358,789	31,204	699	537,775
1995	158,373	371,121	33,094	723	563,311
1996	166,538	374,086	34,234	724	575,582
1997	165,478	385,524	36,117	774	587,893
1998	166,291	397,550	37,329	771	601,943
1999	161,526	418,559	36,443	805	617,333
2000	164,465	425,666	42,115	825	633,071
2001	155,624	446,451	44,393	732	647,200
2002	155,974	461,986	45,386	728	664,074
2003	159,609	474,179	47,404	1,151	682,343
2004	196,423	458,655	46,751	2,621	704,450
2005	153,483	517,433	44,877	2,672	718,465
2006	153,564	529,646	47,899	2,674	733,784
2007	153,195	532,749	55,059	2,778	743,781



**Table 2C: Number of Electric Customers for Municipal Utilities**

Year	Farm	Non-Farm Residential	Commercial	Industrial	Total
1965	2,848	160,885	27,040	2,300	193,073
1967	2,886	165,529	28,149	2,044	198,608
1969	2,861	171,191	28,285	1,875	204,212
1971	3,240	175,877	28,890	1,803	209,810
1973	2,804	183,767	30,501	1,546	218,618
1975	2,741	192,071	30,807	1,503	227,123
1976	1,176	197,470	31,985	1,208	231,927
1977	1,271	202,477	32,359	1,377	237,484
1978	1,303	207,241	33,869	1,286	243,689
1979	1,324	212,852	34,179	1,158	249,513
1980	1,097	213,909	33,746	1,111	249,863
1981	1,108	216,677	34,620	1,163	253,568
1982	1,341	218,054	34,771	1,301	255,467
1983	1,317	221,670	34,897	1,404	259,288
1984	1,372	224,008	35,704	1,543	262,627
1985	1,314	226,008	35,932	1,551	264,805
1986	1,428	223,303	40,560	2,530	267,821
1987	1,466	230,924	36,230	1,580	270,200
1988	1,592	233,977	36,670	1,712	273,951
1989	1,588	236,949	37,413	1,786	277,738
1990	1,636	239,058	37,438	1,948	280,080
1991	816	242,620	37,368	1,664	282,468
1992	1,540	240,091	38,168	2,137	281,937
1993	3,628	240,403	38,578	1,894	284,499
1994	1,503	253,178	40,067	1,943	296,691
1995	1,541	257,077	40,026	1,968	300,612
1996	1,531	260,839	41,990	2,048	306,408
1997	1,531	263,103	40,657	2,093	307,383
1998	1,542	265,412	40,853	2,567	310,374
1999	1,688	268,852	41,331	2,630	314,500
2000	1,441	272,563	42,933	2,577	319,511
2001	1,401	278,971	43,391	2,696	326,459
2002	1,355	282,386	43,121	2,794	329,656
2003	1,398	288,004	44,847	2,839	337,107
2004	1,405	292,441	45,681	3,143	342,666
2005	1,430	299,890	46,428	3,014	350,762
2006	1,359	303,645	47,050	3,215	355,257
2007	1,184	305,468	46,575	3,341	356,566

Note for Table 2 through 2C

\*Xcel Energy redefined its commercial and industrial customer classifications in 2001.

Commercial = Small Commercial and Industrial requiring less than 1000 kW.

Industrial = Large Commercial and Industrial requiring at least 1000 kW.

**Table 3: Minnesota Electric Sales Revenue**

Total Electric Sales Revenue for Minnesota (\$1,000)

<b>Year</b>	<b>Farm</b>	<b>Non-Farm Residential</b>	<b>Commercial</b>	<b>Industrial</b>	<b>Total</b>
1984	232,027	611,797	390,742	786,113	2,020,679
1985	236,127	631,401	409,851	791,767	2,069,146
1986	237,084	650,794	460,137	779,793	2,127,808
1987	235,338	683,285	454,258	846,161	2,219,041
1988	244,458	785,261	500,716	924,932	2,455,367
1989	246,765	754,543	533,586	926,797	2,461,692
1990	243,489	805,504	572,487	1,005,617	2,627,096
1991	229,340	860,661	548,827	1,019,014	2,657,842
1992	196,865	791,726	536,962	994,308	2,519,861
1993	190,991	892,646	566,233	1,069,229	2,719,098
1994	185,170	955,753	601,097	1,105,409	2,848,923
1995	197,573	1,030,079	634,946	1,153,268	3,015,867
1996	204,889	1,031,011	668,436	1,156,750	3,061,085
1997	199,101	1,046,107	676,971	1,207,639	3,129,818
1998	195,014	1,083,805	698,625	1,266,957	3,244,402
1999	195,866	1,141,166	737,432	1,275,500	3,349,963
2000	203,207	1,197,915	778,742	1,322,920	3,502,784
2001*	206,953	1,268,771	1,250,166	933,914	3,659,804
2002	215,701	1,315,785	1,186,304	922,033	3,639,822
2003	220,125	1,363,179	1,223,555	974,907	3,781,163
2004	231,918	1,394,390	1,264,713	1,076,959	3,970,234
2005	233,169	1,564,770	1,461,450	1,130,853	4,392,460
2006	238,616	1,670,059	1,539,034	1,246,306	4,696,269
2007	251,207	1,844,176	1,697,282	1,371,014	5,165,909

**Table 3A: Electric Sales Revenue for Investor-Owned Utilities**

Electric Sales Revenue (\$1,000)

<b>Year</b>	<b>Farm</b>	<b>Non-Farm Residential</b>	<b>Commercial</b>	<b>Industrial</b>	<b>Total</b>
1984	20,009	398,105	250,782	687,480	1,356,377
1985	20,727	407,556	257,782	690,248	1,376,313
1986	20,825	423,028	304,285	673,289	1,421,426
1987	19,660	442,578	286,873	740,501	1,489,613
1988	20,878	514,687	315,582	808,983	1,660,130
1989	19,912	480,220	337,250	801,167	1,638,549
1990	22,370	518,143	367,859	874,366	1,782,738
1991	23,072	533,082	337,806	874,923	1,768,884
1992	7,082	504,114	340,177	855,644	1,707,017
1993	7,311	558,342	353,902	915,252	1,834,806
1994	5,073	583,344	371,386	938,232	1,898,036
1995	5,200	641,934	393,842	982,290	2,023,264
1996	5,489	638,779	422,022	977,195	2,043,486
1997	5,645	653,611	423,229	1,022,192	2,104,678
1998	5,600	677,718	431,912	1,064,415	2,179,645
1999	5,528	707,299	445,387	1,074,562	2,232,775
2000	5,630	729,660	471,002	1,098,337	2,304,628
2001*	5,951	763,300	923,252	703,791	2,396,294
2002	5,995	770,046	846,702	687,852	2,310,596
2003	8,019	788,096	869,130	724,342	2,389,588
2004	9,107	792,583	910,181	790,697	2,502,569
2005	6,929	854,294	1,064,233	748,199	2,673,655
2006	9,636	949,265	1,143,180	902,899	3,004,980
2007	9,589	1,056,061	1,258,527	991,607	3,315,784

**Table 3B: Electric Sales Revenue for Cooperative Utilities**

Electric Sales Revenue (\$1,000)

<b>Year</b>	<b>Farm</b>	<b>Non-Farm Residential</b>	<b>Commercial</b>	<b>Industrial</b>	<b>Total</b>
1984	210,781	128,567	48,928	35,715	423,991
1985	213,724	131,323	52,551	34,480	432,078
1986	214,988	137,223	56,345	33,589	442,145
1987	214,416	144,954	62,458	33,937	455,765
1988	222,219	162,697	77,217	32,587	494,720
1989	225,500	164,166	81,842	33,791	505,299
1990	219,750	174,661	83,194	35,912	513,518
1991	205,144	208,957	88,184	40,079	542,364
1992	188,393	187,884	86,127	41,610	504,014
1993	181,233	221,491	90,721	44,875	538,320
1994	178,644	245,366	93,880	42,452	560,342
1995	190,740	253,351	100,634	43,430	588,154
1996	197,823	256,263	106,434	44,613	605,133
1997	191,918	255,834	110,557	46,797	605,106
1998	187,887	266,397	122,436	50,759	627,479
1999	188,579	288,666	137,147	48,039	662,432
2000	196,099	313,456	143,050	58,110	710,714
2001	199,569	340,202	154,074	59,160	753,006
2002	208,224	371,741	166,143	63,052	809,160
2003	210,509	393,194	171,787	71,928	847,414
2004	221,083	418,354	176,218	89,270	904,926
2005	221,536	467,141	180,506	101,451	970,633
2006	227,169	498,239	193,056	103,290	1,021,754
2007	236,808	544,095	214,812	116,727	1,112,443

**Table 3C: Electric Sales Revenue for Municipal Utilities**

Electric Sales Revenue (\$1,000)

Year	Farm	Non-Farm Residential	Commercial	Industrial	Total
1984	1,236	85,125	91,032	62,918	240,311
1985	1,676	92,521	99,519	67,039	260,755
1986	1,271	90,542	99,508	72,915	264,236
1987	1,262	95,752	104,928	71,722	273,664
1988	1,360	107,877	107,917	83,363	300,518
1989	1,353	110,158	114,493	91,839	317,843
1990	1,369	112,699	121,433	95,338	330,840
1991	1,123	118,622	122,838	104,012	346,594
1992	1,390	99,728	110,658	97,054	308,830
1993	2,448	112,813	121,610	109,101	345,972
1994	1,453	127,043	135,832	124,726	390,545
1995	1,633	134,795	140,471	127,549	404,448
1996	1,577	135,969	139,980	134,942	412,467
1997	1,538	136,662	143,185	138,650	420,035
1998	1,527	139,690	144,278	151,783	437,277
1999	1,597	145,363	154,897	152,899	454,756
2000	1,479	154,799	164,690	166,473	487,441
2001	1,433	165,269	172,839	170,963	510,505
2002	1,482	173,997	173,459	171,128	520,066
2003	1,598	181,888	182,638	178,638	544,161
2004	1,728	183,452	178,313	196,992	562,739
2005	2,245	204,845	192,531	218,771	620,611
2006	1,812	222,556	202,798	240,117	669,535
2007	1,662	246,358	224,752	262,680	737,682

Note for Table 3 through 3C

\*Xcel Energy redefined its commercial and industrial customer classifications in 2001.

Commercial = Small Commercial and Industrial requiring less than 1000 kW.

Industrial = Large Commercial and Industrial requiring at least 1000 kW.

**Table 4: Minnesota Electric Consumption by Utility**

## 2007 Electric Consumption for Investor-Owned Utilities (Megawatt-Hours)

2007	Farm	Non-Farm Residential	Commercial	Industrial	Total
Alliant Energy-Interstate Power & Light Co	33,838	289,610	185,102	331,319	839,869
Minnesota Power	43,446	1,008,007	1,327,738	6,622,051	9,001,242
Northwestern Wisconsin Elec Co	174	192	183	0	549
Otter Tail Power Company	41,663	548,167	296,792	1,244,553	2,131,175
Xcel Energy	0	9,123,085	14,923,503	9,395,486	33,442,073
<b>Total: Investor-Owned Utilities</b>	<b>119,121</b>	<b>10,969,061</b>	<b>16,733,318</b>	<b>17,593,409</b>	<b>45,414,908</b>

## 2007 Electric Consumption for Cooperative Utilities (Megawatt-Hours)

2007	Farm	Non-Farm Residential	Commercial	Industrial	Total
<b>Dairyland Power Cooperative</b>					
Heartland Power Cooperative	808	81	0	0	889
Freeborn Mower Coop Services	0	106,143	32,397	67,037	205,577
Peoples Coop Power Assoc., Inc.	43,480	150,481	41,298	1,987	237,246
Tri-Co Electric Cooperative	174,839	1,938	36,960	53,442	267,179
<b>Total: Dairyland Power Cooperative</b>	<b>219,127</b>	<b>258,643</b>	<b>110,655</b>	<b>122,466</b>	<b>710,891</b>
<b>East River Electric Cooperative</b>					
H-D Electric Cooperative, Inc.	109	95	0	0	204
Lyon-Lincoln Electric Cooperative	60,216	8,706	*	*	87,089
Renville Sibley Coop Power Assn	45,298	3,737	2,324	111,208	162,567
Traverse Electric Cooperative	29,000	2,000	*	*	39,000
<b>Total: East River Electric Cooperative</b>	<b>134,623</b>	<b>14,538</b>	<b>26,490</b>	<b>113,209</b>	<b>288,860</b>

2007 Electric Consumption for Cooperative Utilities, Continued

2007	Farm	Non-Farm Residential	Commercial	Industrial	Total
<b>Great River Energy</b>					
Agralite Cooperative	91,374	3,550	41,267	55,528	191,719
Arrowhead Electric Cooperative	0	40,906	24,661	0	65,567
BENCO Electric Cooperative	89,419	83,127	92,465	0	265,011
Connexus Energy	10,105	1,221,588	730,997	109,969	2,072,659
Brown Co Rural Electric Assn	64,010	1,439	16,848	53,932	136,229
Coop Lt & Pwr Assoc of Lake Co	0	50,162	*	*	88,376
Crow Wing Coop Power & Light	59,125	343,522	140,652	0	543,299
Dakota Electric Association	13,268	963,393	63,296	857,697	1,897,654
East Central Energy	4,330	506,278	271,177	106,750	888,535
Federated Rural Electric Assn	75,872	4,866	47,683	48,179	176,600
Goodhue Co Coop Electric Assn	51,654	30,453	4,144	942	87,193
Itasca-Mantrap Coop Electric	17,732	76,370	*	*	205,239
Kandiyohi Power Cooperative	17,517	88,844	37,887	5,289	149,537
Lake Country Power	0	484,768	114,361	53,089	652,218
Lake Region Coop Electric Assc	121,105	177,200	*	*	362,025
McLeod Coop Power Association	108,217	0	12,895	64,379	185,491
Meeker Coop Light & Power Assn	54,806	78,531	24,219	4,468	162,024
Mille Lacs Electric Cooperative	376	116,152	28,053	47,823	192,404
Minnesota Valley Electric Coop	0	402,032	263,331	0	665,363
Nobles Coop Electric	89,734	966	20,475	44,531	155,706
North Itasca Electric Cooperative	0	39,120	*	*	49,616
Redwood Electric Cooperative	45,695	0	8,231	0	53,926
Runestone Electric Association	75,951	104,797	22,131	9,027	211,906
South Central Electric Assn	66,165	0	31,648	82,577	180,390
Stearns Coop Electric Assn	135,905	213,411	72,487	20,416	442,219
Steele Waseca Coop Electric	114,739	1,719	38,194	81,779	236,431
Todd Wadena Electric Coop	127,187	3,530	23,007	5,033	158,760
Wright Hennepin Coop Elec Assn	40,880	479,675	303,159	67,393	891,107
<b>Total: Great River Energy</b>	<b>1,475,166</b>	<b>5,516,399</b>	<b>2,584,473</b>	<b>1,791,163</b>	<b>11,367,204</b>

2007 Electric Consumption for Cooperative Utilities, Continued

2007	Farm	Non-Farm Residential	Commercial	Industrial	Total
<b>Minnkota Power Cooperative</b>					
Beltrami Electric Cooperative	293,391	1,963	70,670	0	366,024
Clearwater-Polk Electric Coop	0	63,145	10,417	0	73,562
North Star Electric Cooperative	75,891	2,183	35,182	0	113,256
PKM Electric Cooperative, Inc	76,821	0	23,800	0	100,621
Red Lake Electric Cooperative	97,785	0	*	*	122,045
Red River Valley Coop Power	94,763	0	28,636	0	123,399
Roseau Electric Cooperative	110,749	4,671	15,775	28,428	159,623
Wild Rice Electric Cooperative	172,000	37,000	*	*	245,000
<b>Total: MPC - Cooperative</b>	<b>921,400</b>	<b>108,962</b>	<b>225,858</b>	<b>47,810</b>	<b>1,304,030</b>
<b>Other Cooperatives</b>					
Iowa Lakes Electric Cooperative	0	246	85	0	331
Minnesota Valley Coop Lt & Pwr	109,214	11,182	17,244	48,483	186,123
Sioux Valley Southwestern	63,214	2,798	3,031	30,646	99,689
<b>Total: Other Cooperatives</b>	<b>172,428</b>	<b>14,226</b>	<b>20,360</b>	<b>79,129</b>	<b>286,143</b>
<b>Total: Cooperatives</b>	<b>2,922,744</b>	<b>5,912,768</b>	<b>2,967,836</b>	<b>2,153,777</b>	<b>13,957,128</b>



2007 Minnesota Electric Consumption for Municipal Utilities

2007	Farm	Non-Farm Residential	Commercial	Industrial	Total
<b>Central Minnesota Municipal Power Agency</b>					
Blue Earth Light & Water Dept	0	14,007	6,446	35,348	55,801
Delano Municipal Utilities	0	17,505	5,333	28,191	51,028
Fairfax Municipal	76	6,403	3,115	1,375	10,969
Glencoe Light & Power Comm	0	21,609	29,021	23,388	74,018
Granite Falls, City of	0	12,395	15,392	2,287	30,074
Janesville Municipal Utility	0	7,559	3,957	0	11,516
Kasson City Of	0	18,860	11,479	0	30,339
Kenyon Municipal Utilities	0	6,454	3,406	6,906	16,766
Lake Crystal Municipal	182	8,382	8,228	0	16,792
Madelia Municipal Light & Power	0	7,649	11,241	8,937	27,827
Mountain Lake Municipal Utilities	1,504	7,511	4,775	7,482	21,272
New Ulm Public Utilities	0	45,087	74,964	85,276	205,327
Sleepy Eye Public Utility	0	13,790	14,343	19,307	47,440
Springfield Public Utilities	0	8,744	5,408	14,431	28,583
Truman Municipal Utility	144	3,990	1,630	7,769	13,532
Windom Municipal Utility	0	21,100	16,596	33,512	71,208
<b>Total: C MMPA</b>	<b>1,906</b>	<b>221,045</b>	<b>215,334</b>	<b>274,208</b>	<b>712,492</b>
<b>Heartland Consumers Power District</b>					
Marshall Municipal Utilities	0	63,513	35,059	518,207	616,779
Tyler Municipal Light & Power	498	9,995	4,009	0	14,502
<b>Total: Heartland</b>	<b>498</b>	<b>73,508</b>	<b>39,068</b>	<b>518,207</b>	<b>631,281</b>
<b>Minnesota Municipal Power Agency</b>					
Anoka City Of	0	79,634	88,105	107,865	275,604
Arlington City Of	0	8,261	*	*	18,177
Brownton Municipal Light & Power	0	3,688	692	456	4,836
City of Chaska-Utility Dept	0	77,983	19,870	202,085	299,938
Le Sueur Municipal Utilities	505	15,166	7,049	82,008	104,728
North St Paul City Of	0	42,891	31,441	0	74,332
Olivia City Of	0	12,142	4,855	11,619	28,616
Shakopee Public Utilities	687	127,383	12,525	256,816	397,411
Winthrop City Of	173	5,531	*	*	16,062
<b>Total: MMPA</b>	<b>1,365</b>	<b>372,679</b>	<b>177,706</b>	<b>667,854</b>	<b>1,219,604</b>

2007 Minnesota Electric Consumption for Municipal Utilities, Continued

2007	Farm	Non-Farm Residential	Commercial	Industrial	Total
<b>Missouri River Energy Services</b>					
Adrian Public Utilities	0	6,790	6,881	837	14,508
Alexandria Light & Power	0	72,518	40,179	161,367	274,064
Barnesville Municipal Electric	100	14,590	3,521	2,587	20,798
Benson Municipal Utilities	*	15,473	7,247	*	36,700
Breckenridge Public Utilities	0	20,238	10,649	12,113	43,000
Detroit Lakes Public Utility	0	64,307	30,994	82,676	177,977
Elbow Lake Municipal Electric	0	6,684	10,335	0	17,019
Henning Electric Department	0	9,212	604	0	9,816
Jackson Electric Light & Power	0	14,230	6,033	25,858	46,121
Lake Park Public Utilities	0	4,062	3,277	0	7,339
Lakefield City of	18	7,933	6,696	0	14,647
Luverne Public Utilities	112	22,242	10,996	46,338	79,688
Madison Municipal Utilities	0	8,851	4,619	4,915	18,385
Moorhead Public Service	0	159,681	39,952	212,404	412,037
Ortonville City Of	0	13,967	15,323	0	29,290
St. James City of	*	19,172	28,813	*	65,847
Sauk Centre Public Utilities	0	19,426	11,908	30,746	62,080
Staples City of	0	9,263	7,091	6,177	23,094
Wadena Light & Water	0	22,877	7,768	40,956	71,601
Westbrook Mun Light & Power	236	4,108	1,542	1,622	7,508
Worthington Municipal Power	0	36,343	64,340	92,991	193,674
<b>Total: MRES</b>	<b>527</b>	<b>551,967</b>	<b>318,768</b>	<b>753,368</b>	<b>1,625,193</b>
<b>Northern Municipal Power Agency</b>					
Bagley Public Utility	0	7,752	4,786	14,796	27,334
Baudette City Of	0	4,846	*	*	22,412
Fosston Municipal Utility	0	10,624	*	*	34,568
Halstad Municipal Utilities	0	4,748	3,987	0	8,734
Hawley Public Utilities	0	10,539	9,018	0	19,557
Roseau Municipal Water & Light	0	15,276	8,739	19,206	43,221
Stephen Electric Dept	0	4,074	4,214	0	8,288
Thief River Falls Mun Utilities	0	45,454	55,661	39,730	140,845
Warren City Of	0	8,338	11,650	0	19,988
Warroad Municipal Light & Power	0	8,697	15,572	34,861	59,130
<b>Total: NMPA</b>	<b>0</b>	<b>120,348</b>	<b>139,677</b>	<b>124,053</b>	<b>384,077</b>

2007 Minnesota Electric Consumption for Municipal Utilities, Continued

2007	Farm	Non-Farm Residential	Commercial	Industrial	Total
<b>Other Municipals</b>					
Ada Water & Light Dept	0	11,661	6,697	3,231	21,589
Aitkin Public Utilities	0	13,110	6,819	16,111	36,040
Alpha City of	45	700	433	0	1,178
Alvarado Electric Dept	610	2,300	555	0	3,465
Bigelow City of	570	810	270	1,170	2,820
Biwabik Water Light & Power	0	3,875	3,542	0	7,417
Brainerd Public Utilities	0	49,127	78,566	119,892	247,585
Brewster Electric Light & Power	64	2,153	741	650	3,608
Buffalo City Of	11	38,720	55,626	9,489	103,846
Buhl Pub Utilities	0	3,762	3,672	0	7,434
Caledonia Mun Light & Power	97	10,159	7,984	8,063	26,303
Ceylon Public Utilities	0	1,899	893	0	2,792
Darwin Electric Dept	0	2,006	477	0	2,483
Dundee Electric Utility	0	430	341	0	771
Dunnell Electric Department	0	583	696	0	1,279
East Grand Forks Water & Light	0	36,935	35,264	74,253	146,452
Eitzen Public Utilities	0	1,512	416	325	2,253
Elk River Municipal Utilities	203	77,601	21,849	111,645	211,298
Ely Water & Light Dept	0	15,000	20,000	0	35,000
Gilbert Water & Light	0	5,893	4,501	0	10,394
Grand Rapids Public Utilities	0	46,952	96,052	18,407	161,411
Grove City Electric Dept	0	3,957	3,928	0	7,885
Harmony Electric Dept	0	4,487	4,862	454	9,803
Hibbing Public Utilities Comm	0	51,093	67,176	19,838	138,107
Hutchinson Utilities Commission	0	52,558	18,790	235,075	306,423
Kandiyohi Municipal Utilities	0	2,520	930	0	3,450
Kasota Electric Light	0	3,390	310	0	3,700
Keewatin Public Utilities	0	5,665	608	0	6,273
Lanesboro Public Utilities	0	2,948	3,894	0	6,842
Mabel City of	0	2,564	2,760	0	5,324
Melrose Public Utilities	2,472	18,846	5,598	81,025	107,941
Moose Lake Water & Light Comm	0	5,808	12,635	10,935	29,378
Mountain Iron Water & Light	0	10,004	8,163	1,718	19,885
Nashwauk Public Utilities	0	4,111	4,364	0	8,475
Newfolden Electric	0	2,249	2,369	0	4,618
Nielsville Village Light System	0	382	197	0	579
Peterson Public Utilities	0	1,513	0	0	1,513
Pierz Utilities	0	3,750	4,900	850	9,500

2007 Minnesota Electric Consumption for Municipal Utilities, Continued

2007	Farm	Non-Farm Residential	Commercial	Industrial	Total
<b>Other Municipals (continued)</b>					
Proctor Public Utilities	0	12,623	*	*	24,452
Randall City of	*	3,196	1,940	*	5,206
Round Lake Electric Dept	0	2,458	753	4,757	7,968
Rushford City of	0	6,811	*	*	13,589
Rushmore City of	0	1,659	426	0	2,103
Shelly Municipal Light Dept.	0	1,709	723	0	2,432
Spring Grove Municipal Electric	49	4,761	4,386	5,918	15,114
St Charles Light & Water	*	12,877	11,297	*	33,915
Two Harbors City of	0	11,259	4,545	13,540	29,344
Virginia Dept of Public Utilities	0	35,836	64,802	0	100,638
Whalan City of	0	350	0	0	350
Willmar Municipal Utilities	0	69,551	98,370	118,926	286,847
<b>Total: Other Municipals</b>	<b>4,230</b>	<b>664,123</b>	<b>688,725</b>	<b>869,994</b>	<b>2,227,072</b>
<b>Southern Minnesota Municipal Power Agency</b>					
Austin Utilities	6,096	75,606	*	*	336,336
Bloomington Prairie Utilities	0	6,909	17,021	0	23,930
Fairmont Public Utilities	3,607	39,992	56,353	54,845	154,797
Grand Marais Public Utilities	0	7,736	14,180	0	21,916
Lake City Utility Board	58	20,145	18,969	109,260	148,432
Litchfield Public Utilities	502	35,269	41,260	40,493	117,524
Mora Municipal Electric Utility	0	12,390	8,986	36,081	57,457
New Prague Municipal Utilities	0	19,130	*	*	67,807
North Branch Mun Water & Light	0	12,296	13,060	5,229	30,585
Owatonna Public Utilities	0	86,981	97,281	200,981	385,243
Preston Public Utilities	125	5,186	4,191	3,838	13,340
Princeton Public Utilities	0	16,565	15,579	20,188	52,332
Redwood Falls Public Utilities	0	30,140	19,264	21,432	70,836
Rochester Public Utilities	0	342,691	658,039	308,478	1,309,208
Spring Valley Pub Utilities Comm	0	8,854	11,554	0	20,408
St Peter Municipal Utilities	0	28,152	38,935	24,935	92,022
Waseca Utility	0	27,590	10,980	27,362	65,932
Wells Public Utilities	0	8,663	10,376	0	19,039
<b>Total: SMMPA</b>	<b>10,388</b>	<b>784,295</b>	<b>1,179,966</b>	<b>1,012,495</b>	<b>2,987,144</b>
<b>Total: Municipal Utilities</b>	<b>18,914</b>	<b>2,787,965</b>	<b>2,759,244</b>	<b>4,220,179</b>	<b>9,786,863</b>
<b>Total: Minnesota</b>	<b>3,060,779</b>	<b>19,669,793</b>	<b>22,460,397</b>	<b>23,967,365</b>	<b>69,158,900</b>

Note for Table 4

\* Withheld to avoid disclosure of individual company data. Data included in totals.

**Table 5: Number of Minnesota Electric Customers by Utility**

2007 Number of Minnesota Electric Customers for Investor-Owned Utilities

2007	Farm	Non-Farm Residential	Commercial	Industrial	Total
<b>Investor-Owned Utilities</b>					
Alliant Energy-Interstate Power & Light Co	1,603	34,617	7,090	278	43,588
Minnesota Power	1,788	117,082	21,419	435	140,724
Northwestern Wisconsin Elec Co	31	41	22	0	94
Otter Tail Power Company	1,452	47,315	9,655	749	59,171
Xcel Energy	0	1,074,894	129,561	503	1,204,958
<b>Total: Investor-Owned Utilities</b>	<b>4,874</b>	<b>1,273,949</b>	<b>167,747</b>	<b>1,965</b>	<b>1,448,535</b>

2007 Number of Minnesota Electric Customers for Cooperative Utilities

2007	Farm	Non-Farm Residential	Commercial	Industrial	Total
<b>Dairyland Power Cooperative</b>					
Heartland Power Cooperative	37	5	0	0	42
Freeborn Mower Coop Services	0	5,905	87	8	6,000
Peoples Coop Power Assoc., Inc.	2,494	12,563	453	0	15,512
Tri-Co Electric Cooperative	10,806	1,608	383	2	12,799
<b>Total: Dairyland Power Coop</b>	<b>13,337</b>	<b>20,081</b>	<b>923</b>	<b>12</b>	<b>34,353</b>
<b>East River Electric Cooperative</b>					
H-D Electric Cooperative, Inc.	6	5	0	0	11
Lyon-Lincoln Electric Cooperative	3,171	525	291	1	3,988
Renville Sibley Coop Power Assn	1,719	190	55	6	1,970
Traverse Electric Cooperative	1,309	352	69	1	1,731
<b>Total: East River Electric Cooperative</b>	<b>6,205</b>	<b>1,072</b>	<b>415</b>	<b>8</b>	<b>7,700</b>

Number of Minnesota Electric Customers for Cooperative Utilities in 2007, Continued

2007	Farm	Non-Farm Residential	Commercial	Industrial	Total
<b>Great River Energy</b>					
Agralite Cooperative	3,759	651	212	3	4,625
Arrowhead Electric Cooperative	0	3,596	414	0	4,010
BENCO Electric Cooperative	6,712	6,056	607	0	13,375
Connexus Energy	313	112,597	8,920	13	121,843
Brown County Rural Electric Assn	3,212	117	474	66	3,869
Coop Lt & Power Assoc of Lake Co	0	5,197	598	1	5,796
Crow Wing Coop Power & Light	1,075	38,019	2,100	0	41,194
Dakota Electric Association	291	92,787	4,452	2,429	99,959
East Central Energy	106	47,423	4,742	9	52,280
Federated Rural Electric Assn	3,832	699	457	4	4,992
Goodhue Co Coop Electric Assn	2,286	2,293	229	8	4,816
Itasca-Mantrap Coop Electric	949	4,675	5,561	1	11,186
Kandiyohi Power Cooperative	2,543	4,609	956	3	8,111
Lake Country Power	0	45,065	3,095	3	48,163
Lake Region Coop Electric Assc	6,663	17,031	2,102	1	25,979
McLeod Coop Power Association	6,237	0	285	5	6,527
Meeker Coop Light & Power Assn	2,794	5,038	538	2	8,372
Mille Lacs Electric Cooperative	20	13,472	1,090	76	14,658
Minnesota Valley Electric Coop	0	30,142	3,060	0	33,202
Nobles Cooperative Electric	4,337	455	266	2	5,060
North Itasca Electric Cooperative	0	5,233	339	1	5,573
Redwood Electric Cooperative	2,316	0	161	0	2,477
Runestone Electric Association	4,439	8,244	677	3	13,363
South Central Electric Assn	3,517	0	373	3	3,893
Stearns Cooperative Electric Assn	4,616	17,726	1,420	3	23,765
Steele Waseca Coop Electric	8,053	550	468	9	9,080
Todd Wadena Electric Cooperative	6,848	970	391	2	8,211
Wright Hennepin Coop Elec Assn	3,043	37,400	4,976	9	45,428
<b>Total: Great River Energy</b>	<b>77,961</b>	<b>500,045</b>	<b>48,963</b>	<b>2,656</b>	<b>629,625</b>

Number of Minnesota Electric Customers for Cooperative Utilities in 2007, Continued

2007	Farm	Non-Farm Residential	Commercial	Industrial	Total
<b>Minnkota Power Cooperative</b>					
Beltrami Electric Cooperative	17,493	946	1,366	0	19,805
Clearwater-Polk Electric Coop	0	4,072	309	0	4,381
North Star Electric Cooperative	4,527	1,236	580	0	6,343
PKM Electric Cooperative, Inc	3,360	0	250	0	3,610
Red Lake Electric Cooperative	4,728	0	319	50	5,097
Red River Valley Coop Power	4,222	0	519	0	4,741
Roseau Electric Cooperative	5,677	364	295	2	6,338
Wild Rice Electric Cooperative	8,951	3,962	681	1	13,595
<b>Total: MPC - Cooperative</b>	<b>48,958</b>	<b>10,580</b>	<b>4,319</b>	<b>53</b>	<b>63,910</b>
<b>Other Cooperatives</b>					
Iowa Lakes Electric Cooperative	0	16	5	0	21
Minnesota Valley Coop Lt & Power	4,223	779	260	2	5,264
Sioux Valley Southwestern	2,511	176	174	47	2,908
<b>Total: Other Cooperatives</b>	<b>6,734</b>	<b>971</b>	<b>439</b>	<b>49</b>	<b>8,193</b>
<b>Total: Cooperatives</b>	<b>153,195</b>	<b>532,749</b>	<b>55,059</b>	<b>2,778</b>	<b>743,781</b>

2007 Number of Minnesota Electric Customers for Municipal Utilities

2007	Farm	Non-Farm Residential	Commercial	Industrial	Total
<b>Central Minnesota Municipal Power Agency</b>					
Blue Earth Light & Water Dept	0	1,674	315	64	2,053
Delano Municipal Utilities	0	1,966	308	84	2,358
Fairfax Municipal	4	564	105	7	680
Glencoe Light & Power Comm	0	2,443	390	2	2,835
Granite Falls City of	0	1,363	250	7	1,620
Janesville Municipal Utility	0	1,104	418	0	1,522
Kasson City Of	0	2,248	246	0	2,494
Kenyon Municipal Utilities	0	831	116	26	973
Lake Crystal Municipal	18	1,032	183	0	1,233
Madelia Municipal Light & Power	0	1,025	209	11	1,245
Mountain Lake Municipal Utilities	38	852	177	12	1,079
New Ulm Public Utilities	0	5,929	1,073	8	7,010
Sleepy Eye Public Utility	0	1,489	393	14	1,896
Springfield Public Utilities	0	1,015	203	12	1,230
Truman Municipal Utility	12	486	111	27	636
Windom Municipal Utility	0	2,053	358	21	2,432
<b>Total: CMMPA</b>	<b>72</b>	<b>26,074</b>	<b>4,855</b>	<b>295</b>	<b>31,296</b>
<b>Heartland Consumers Power District</b>					
Marshall Municipal Utilities	0	5,463	898	86	6,447
Tyler Municipal Light & Power	15	515	122	0	652
<b>Total: Heartland</b>	<b>15</b>	<b>5,978</b>	<b>1,020</b>	<b>86</b>	<b>7,099</b>
<b>Minnesota Municipal Power Agency</b>					
Anoka City Of	0	10,434	1,292	17	11,743
Arlington City Of	0	972	159	1	1,132
Brownton Municipal Light & Power	0	343	43	7	393
City of Chaska-Utility Dept.	0	7,995	771	245	9,011
Le Sueur Municipal Utilities	17	1,818	301	57	2,193
North St Paul City Of	0	5,675	635	0	6,310
Olivia City Of	0	1,066	193	65	1,324
Shakopee Public Utilities	19	13,974	978	465	15,436
Winthrop City Of	12	669	118	2	801
<b>Total: MMPA</b>	<b>48</b>	<b>42,946</b>	<b>4,490</b>	<b>859</b>	<b>48,343</b>



Number of Minnesota Electric Customers for Municipal Utilities, Continued

2007	Farm	Non-Farm Residential	Commercial	Industrial	Total
<b>Missouri River Energy Services</b>					
Adrian Public Utilities	0	535	106	2	643
Alexandria Light & Power	0	7,473	1,592	172	9,237
Barnesville Municipal Electric	3	1,052	108	13	1,176
Benson Municipal Utilities	3	1,528	259	49	1,839
Breckenridge Public Utilities	0	1,547	279	20	1,846
Detroit Lakes Public Utility	0	5,412	1,075	110	6,597
Elbow Lake Municipal Electric	0	673	107	0	780
Henning Electric Dept	0	464	119	0	583
Jackson Electric Light & Power	0	1,574	267	46	1,887
Lake Park Public Utilities	0	389	68	0	457
Lakefield City of	2	874	152	0	1,028
Luverne Public Utilities	4	2,089	315	120	2,528
Madison Municipal Utilities	0	825	158	29	1,012
Moorhead Public Service	0	14,043	1,677	185	15,905
Ortonville City Of	0	1,072	247	0	1,319
St. James City of	3	1,883	382	1	2,269
Sauk Centre Public Utilities	0	1,934	366	75	2,375
Staples City of	0	1,047	206	7	1,260
Wadena Light & Water	0	2,055	448	98	2,601
Westbrook Mun Light & Power	19	325	92	2	438
Worthington Municipal Power	0	4,515	798	7	5,320
<b>Total: MRES</b>	<b>34</b>	<b>51,309</b>	<b>8,821</b>	<b>936</b>	<b>61,100</b>
<b>Northern Municipal Power Agency</b>					
Bagley Public Utility	0	555	143	64	762
Baudette City Of	0	572	180	1	753
Fosston Municipal Utility	0	719	218	8	945
Halstad Municipal Utilities	0	279	64	0	343
Hawley Public Utilities	0	885	189	0	1,074
Roseau Municipal Water & Light	0	1,109	217	51	1,377
Stephen Electric Dept	0	299	95	0	394
Thief River Falls Municipal Utilities	0	3,747	686	30	4,463
Warren City Of	0	598	12	0	610
Warroad Municipal Light & Power	0	749	139	4	892
<b>Total: NMPA</b>	<b>0</b>	<b>9,512</b>	<b>1,943</b>	<b>158</b>	<b>11,613</b>

Number of Minnesota Electric Customers for Municipal Utilities, Continued

2007	Farm	Non-Farm Residential	Commercial	Industrial	Total
<b>Other Municipals</b>					
Ada Water & Light Dept	0	857	132	32	1,021
Aitkin Public Utilities	0	1,494	323	75	1,892
Alpha City of	2	60	14	0	76
Alvarado Electric Dept	5	184	40	0	229
Bigelow City of	25	95	25	7	152
Biwabik Water Light & Power	0	593	88	0	681
Brainerd Public Utilities	0	6,399	1,291	33	7,723
Brewster Electric Light & Power	4	220	31	2	257
Buffalo City Of	2	4,580	734	15	5,331
Buhl Public Utilities	0	521	58	0	579
Caledonia Municipal Light & Power	8	1,332	249	19	1,608
Ceylon Public Utilities	0	161	76	0	237
Darwin Electric Dept	0	187	45	0	232
Dundee Electric Utility	0	50	17	0	67
Dunnell Electric Department	0	92	28	0	120
East Grand Forks Water & Light Dept	0	3,561	512	10	4,083
Eitzen Public Utilities	0	133	20	3	156
Elk River Municipal Utilities	19	7,900	860	166	8,945
Ely Water & Light Dept	0	1,761	359	0	2,120
Gilbert Water & Light	0	913	79	0	992
Grand Rapids Public Utilities	0	5,304	1,419	5	6,728
Grove City Electric Dept	0	357	73	0	430
Harmony Electric Dept	0	515	151	8	674
Hibbing Public Utilities Commission	0	6,142	899	18	7,059
Hutchinson Utilities Commission	0	6,004	817	122	6,943
Kandiyohi Municipal Utilities	0	265	35	0	300
Kasota Electric Light	0	330	5	0	335
Keewatin Public Utilities***	0	547	11	0	558
Lanesboro Public Utilities	0	453	150	0	603
Mabel City of	0	390	93	0	483
Melrose Public Utilities	54	1,289	202	51	1,596
Moose Lake Water & Light Comm	0	765	279	2	1,046
Mountain Iron Water & Light	0	1,108	123	6	1,237
Nashwauk Public Utilities	0	474	59	0	533
Newfolden Electric	0	188	52	0	240
Nielsville Village Light System	0	50	7	0	57
Peterson Public Utilities	0	115	0	0	115
Pierz Utilities	0	565	103	2	670

Number of Minnesota Electric Customers for Municipal Utilities, Continued

2007	Farm	Non-Farm Residential	Commercial	Industrial	Total
<b>Other Municipals (continued)</b>					
Proctor Public Utilities	0	1,279	88	1	1,368
Randall City of	1	258	48	2	309
Round Lake Electric Dept	0	223	34	2	259
Rushford City Of	0	798	122	1	921
Rushmore City of	0	200	16	2	218
Shelly Municipal Light Dept.	0	127	11	0	138
Spring Grove Municipal Electric	3	631	142	3	779
St Charles Light & Water	1	1,429	228	1	1,659
Two Harbors City of	0	1,636	227	42	1,905
Virginia Dept of Public Utilities	0	4,291	943	0	5,234
Whalan City of	0	36	3	0	39
Willmar Municipal Utilities	0	7,860	1,260	32	9,152
<b>Total: Other Municipals</b>	<b>124</b>	<b>74,722</b>	<b>12,581</b>	<b>662</b>	<b>88,089</b>
<b>Southern Minnesota Municipal Power Agency</b>					
Austin Utilities	646	9,982	1,931	1	12,560
Blooming Prairie Utilities	0	840	195	0	1,035
Fairmont Public Utilities	223	4,726	839	13	5,801
Grand Marais Public Utilities	0	892	327	0	1,219
Lake City Utility Board	2	2,725	444	6	3,177
Litchfield Public Utilities	16	2,774	458	6	3,254
Mora Municipal Electric Utility	0	1,623	236	32	1,891
New Prague Municipal Utilities	0	2,137	310	39	2,486
North Branch Mun Water & Light	0	1,659	244	8	1,911
Owatonna Public Utilities	0	10,245	1,004	57	11,306
Preston Public Utilities	4	674	196	13	887
Princeton Public Utilities	0	2,182	359	27	2,568
Redwood Falls Public Utilities	0	2,290	527	56	2,873
Rochester Public Utilities	0	42,429	4,523	2	46,954
Spring Valley Public Utility	0	1,284	203	0	1,487
St Peter Municipal Utilities	0	3,671	428	3	4,102
Waseca Utility	0	3,657	452	82	4,191
Wells Public Utilities	0	1,137	189	0	1,326
<b>Total: SMMPA</b>	<b>891</b>	<b>94,927</b>	<b>12,865</b>	<b>345</b>	<b>109,028</b>
<b>Total: Municipal Utilities</b>	<b>1,184</b>	<b>305,468</b>	<b>46,575</b>	<b>3,341</b>	<b>356,568</b>
<b>Total: Minnesota</b>	<b>159,253</b>	<b>2,112,166</b>	<b>269,381</b>	<b>8,084</b>	<b>2,548,884</b>

Note for Table 5

\*\*\* Data is from 2003.

**Table 6: Minnesota Electric Sales Revenue by Utility**

## 2007 Minnesota Electric Sales Revenue for Investor-Owned Utilities

<b>2007 (In \$1,000's)</b>	<b>Farm</b>	<b>Non-Farm Residential</b>	<b>Commercial</b>	<b>Industrial</b>	<b>Total</b>
<b>Investor-Owned Utilities</b>					
Alliant Energy-Interstate Power & Light Co	3,181	27,920	18,933	22,700	72,734
Minnesota Power	3,708	77,271	91,566	318,808	491,352
Northwestern Wisconsin Elec Co	22	24	24	0	70
Otter Tail Power Company	2,678	41,260	24,996	68,746	137,680
Xcel Energy	0	909,585	1,123,008	581,354	2,613,947
<b>Total: Investor-Owned Utilities</b>	<b>9,589</b>	<b>1,056,061</b>	<b>1,258,527</b>	<b>991,607</b>	<b>3,315,784</b>

## 2007 Minnesota Electric Sales Revenue for Cooperative Utilities

<b>2007 (In \$1,000's)</b>	<b>Farm</b>	<b>Non-Farm Residential</b>	<b>Commercial</b>	<b>Industrial</b>	<b>Total</b>
<b>Dairyland Power Cooperative</b>					
Heartland Power Cooperative	71	4	0	0	75
Freeborn Mower Coop Services	0	10,322	2,092	2,719	15,134
Peoples Coop Power Assoc., Inc.	4,265	17,061	3,447	176	24,949
Tri-Co Electric Cooperative	18,888	332	3,253	1,998	24,471
<b>Total: Dairyland Power Coop</b>	<b>23,224</b>	<b>27,720</b>	<b>8,792</b>	<b>4,893</b>	<b>64,629</b>
<b>East River Electric Cooperative</b>					
H-D Electric Cooperative, Inc	9	8	0	0	17
Lyon-Lincoln Electric Cooperative	4,538	658	*	*	6,322
Renville Sibley Coop Power Assn	3,418	297	189	4,276	8,180
Traverse Electric Cooperative	2,410	207	*	*	3,200
<b>Total: East River Electric Coop</b>	<b>10,375</b>	<b>1,170</b>	<b>1,770</b>	<b>4,404</b>	<b>17,719</b>

Minnesota Electric Sales Revenue for Cooperative Utilities, Continued

2007 (In \$1,000's)	Farm	Non-Farm Residential	Commercial	Industrial	Total
<b>Great River Energy</b>					
Agralite Cooperative	8,186	505	2,457	2,712	13,861
Arrowhead Electric Cooperative	0	4,190	2,256	0	6,446
BENCO Electric Cooperative	8,275	7,704	6,574	0	22,553
Brown Co Rural Electric Assn	4,952	118	1,160	2,992	9,222
Connexus Energy	912	111,130	49,665	5,779	167,486
Coop Lt & Power Assc of Lake Co	0	4,424	*	*	7,115
Crow Wing Coop Power & Light	4,819	29,431	10,919	0	45,169
Dakota Electric Association	909	86,949	5,997	51,850	145,705
East Central Energy	406	52,405	20,795	5,446	79,052
Federated Rural Electric Assn	5,211	371	2,808	2,508	10,898
Goodhue Co Coop Electric Assn	4,694	2,913	389	80	8,075
Itasca-Mantrap Coop Electric	1,399	5,435	*	*	14,262
Kandiyohi Power Cooperative	1,351	7,843	2,985	296	12,476
Lake Country Power	0	46,889	9,626	3,051	59,566
Lake Region Coop Electric Assc	11,327	16,780	*	*	33,542
McLeod Coop Power Association	9,718	0	977	3,327	14,022
Meeker Coop Light & Power Assn	392	10,657	1,982	246	13,277
Mille Lacs Electric Cooperative	36	11,815	2,590	2,832	17,273
Minnesota Valley Electric Coop	0	34,449	15,629	0	50,078
Nobles Cooperative Electric	6,740	126	1,345	2,267	10,477
North Itasca Electric Cooperative	0	4,241	*	*	5,115
Redwood Electric Cooperative	4,178	0	730	0	4,908
Runestone Electric Association	6,560	9,251	1,791	527	18,129
South Central Electric Assn	6,023	0	2,336	3,614	11,974
Stearns Coop Electric Assn	10,356	16,236	5,234	1,199	33,024
Steele Waseca Coop Electric	12,070	271	3,280	4,232	19,853
Todd Wadena Electric Cooperative	10,771	453	1,650	291	13,164
Wright Hennepin Coop Elec Assn	3,497	41,103	21,770	4,288	70,659
<b>Total: Great River Energy</b>	<b>122,783</b>	<b>505,690</b>	<b>187,458</b>	<b>101,452</b>	<b>917,383</b>

Minnesota Electric Sales Revenue for Cooperative Utilities, Continued

2007 (In \$1,000's)	Farm	Non-Farm Residential	Commercial	Industrial	Total
<b>Minnkota Power Cooperative</b>					
Beltrami Electric Cooperative	21,504	394	4,921	0	26,818
Clearwater-Polk Electric Coop	0	4,976	462	0	5,438
North Star Electric Cooperative	5,983	598	2,522	0	9,103
PKM Electric Cooperative, Inc	5,980	0	1,541	0	7,521
Red Lake Electric Cooperative	6,657	0	*	*	8,082
Red River Valley Coop Power	7,025	0	1,943	0	8,968
Roseau Electric Cooperative	7,806	438	1,274	1,275	10,794
Wild Rice Electric Cooperative	12,740	2,487	*	*	17,643
<b>Total: MPC - Cooperative</b>	<b>67,695</b>	<b>8,892</b>	<b>15,449</b>	<b>2,331</b>	<b>94,366</b>
<b>Other Cooperatives</b>					
Iowa Lakes Electric Cooperative	0	28	9	0	37
Minnesota Valley Coop Lt & Power	7,940	402	1,075	1,833	11,250
Sioux Valley Southwestern	4,791	194	260	1,814	7,059
<b>Total: Other Cooperatives</b>	<b>12,731</b>	<b>624</b>	<b>1,343</b>	<b>3,647</b>	<b>18,346</b>
<b>Total: Cooperatives</b>	<b>236,808</b>	<b>544,095</b>	<b>214,812</b>	<b>116,727</b>	<b>1,112,443</b>

2007 Minnesota Electric Sales Revenue for Municipal Utilities

2007 (In \$1,000's)	Farm	Non-Farm Residential	Commercial	Industrial	Total
<b>Central Minnesota Municipal Power Agency</b>					
Blue Earth Light & Water Dept	0	1,345	621	2,833	4,799
Delano Municipal Utilities	0	2,222	593	2,771	5,586
Fairfax Municipal	5	444	337	128	914
Glencoe Light & Power Commission	0	2,546	3,250	2,317	8,113
Granite Falls City of	0	1,276	1,629	167	3,072
Janesville Municipal Utility	0	1,005	510	0	1,515
Kasson City Of	0	1,788	924	0	2,712
Kenyon Municipal Utilities	0	883	442	810	2,136
Lake Crystal Municipal	16	776	615	0	1,407
Madelia Municipal Light & Power	0	811	1,090	698	2,599
Mountain Lake Municipal Utilities	129	793	378	621	1,920
New Ulm Public Utilities	0	5,551	7,523	7,760	20,834
Sleepy Eye Public Utility	0	1,173	1,162	1,463	3,798
Springfield Public Utilities	0	927	544	1,215	2,686
Truman Municipal Utility	17	417	174	405	1,012
Windom Municipal Utility	0	1,644	1,306	2,458	5,408
<b>Total: C MMPA</b>	<b>167</b>	<b>23,601</b>	<b>21,098</b>	<b>23,646</b>	<b>68,512</b>
<b>Heartland Consumers Power District</b>					
Marshall Municipal Utilities	0	3,879	2,405	23,985	30,270
Tyler Municipal Light & Power	26	530	213	0	770
<b>Total: Heartland</b>	<b>26</b>	<b>4,410</b>	<b>2,618</b>	<b>23,985</b>	<b>31,039</b>
<b>Minnesota Municipal Power Agency</b>					
Anoka City Of	0	8,166	7,500	7,353	23,020
Arlington City Of	0	653	*	*	1,421
Brownton Municipal Light & Power	0	260	59	36	355
City of Chaska-Utility Dept.	0	7,244	1,666	16,372	25,282
Le Sueur Municipal Utilities	60	1,915	714	6,452	9,141
North St Paul City Of	0	4,909	3,302	0	8,211
Olivia City Of	0	779	*	*	1,812
Shakopee Public Utilities	70	13,513	1,208	18,178	32,969
Winthrop City Of	16	540	419	376	1,351
<b>Total: MMPA</b>	<b>146</b>	<b>37,979</b>	<b>15,728</b>	<b>49,709</b>	<b>103,562</b>

Minnesota Electric Sales Revenue for Municipal Utilities, Continued

2007 (In \$1,000's)	Farm	Non-Farm Residential	Commercial	Industrial	Total
<b>Missouri River Energy Services</b>					
Adrian Public Utilities	0	552	511	71	1,134
Alexandria Light & Power	0	5,316	2,740	8,595	16,651
Barnesville Municipal Electric	8	1,121	187	129	1,444
Benson Municipal Utilities	1	1,117	567	874	2,559
Breckenridge Public Utilities	0	1,246	660	743	2,649
Detroit Lakes Public Utility	0	4,418	2,098	4,603	11,119
Elbow Lake Municipal Electric	0	519	863	0	1,382
Henning Electric Dept	0	625	62	0	687
Jackson Electric Light & Power	0	1,045	424	910	2,379
Lake Park Public Utilities	0	326	237	0	563
Lakefield City of	1	514	388	0	904
Luverne Public Utilities	10	1,853	878	2,658	5,399
Madison Municipal Utilities	0	437	251	200	887
Moorhead Public Service	0	10,706	2,993	11,115	24,813
Ortonville City Of	0	856	737	0	1,593
St. James City of	3	1,138	*	*	3,729
Sauk Centre Public Utilities	0	1,207	*	*	3,601
Staples City of	0	812	595	358	1,766
Wadena Light & Water	0	1,660	506	2,505	4,671
Westbrook Mun Light & Power	19	310	124	115	568
Worthington Municipal Power	0	2,629	4,459	4,791	11,878
<b>Total: MRES</b>	<b>42</b>	<b>38,405</b>	<b>21,775</b>	<b>40,155</b>	<b>100,377</b>
<b>Northern Municipal Power Agency</b>					
Bagley Public Utility	0	486	307	935	1,727
Baudette City Of	0	400	*	*	1,609
Fosston Municipal Utility	0	745	906	636	2,287
Halstad Municipal Utilities	0	334	268	0	603
Hawley Public Utilities	0	836	637	0	1,473
Roseau Municipal Water & Light	0	1,055	763	983	2,802
Stephen Electric Dept	0	325	261	0	586
Thief River Falls Municipal Utilities	0	2,680	2,950	2,177	7,807
Warren City Of	0	647	655	0	1,302
Warroad Municipal Light & Power	0	638	*	*	2,991
<b>Total: NMPA</b>	<b>0</b>	<b>8,146</b>	<b>8,550</b>	<b>6,490</b>	<b>23,186</b>



Minnesota Electric Sales Revenue for Municipal Utilities, Continued

2007 (In \$1,000's)	Farm	Non-Farm Residential	Commercial	Industrial	Total
<b>Other Municipals</b>					
Ada Water & Light Dept	0	596	238	219	1,054
Aitkin Public Utilities	0	918	893	1,132	2,943
Alpha City of	3	50	58	0	111
Alvarado Electric Dept	41	188	42	0	271
Bigelow City of	32	54	26	0	213
Biwabik Water Light & Power	0	272	241	0	513
Brainerd Public Utilities	0	3,477	5,295	6,279	15,051
Brewster Electric Light & Power	5	161	53	83	303
Buffalo City Of	1	4,406	5,859	994	11,261
Buhl Public Utilities	0	226	217	0	443
Caledonia Mun Light & Power	9	1,030	714	413	2,166
Ceylon Public Utilities	0	113	53	0	166
Darwin Electric Dept	0	161	119	0	280
Dundee Electric Utility	0	41	14	0	66
Dunnell Electric Department	0	54	44	0	98
East Grand Forks Water & Light Dept	0	3,159	2,716	5,176	11,051
Eitzen Public Utilities	0	118	34	25	177
Elk River Municipal Utilities	21	7,285	1,855	8,543	17,704
Ely Water & Light Dept	0	1,129	1,728	0	2,858
Gilbert Water & Light	0	382	293	0	675
Grand Rapids Public Utilities	0	3,532	6,752	1,088	11,372
Grove City Electric Dept	0	331	304	0	635
Harmony Electric Dept	0	358	369	87	814
Hibbing Public Utilities Commission	0	4,180	5,453	756	10,389
Hutchinson Utilities Commission	0	5,144	1,790	16,700	23,634
Kandiyohi Municipal Utilities	0	165	60	0	225
Kasota Electric Light	0	218	36	0	254
Keewatin Public Utilities	0	420	34	0	454
Lanesboro Public Utilities	0	239	305	0	544
Mabel City of	0	256	237	0	493
Melrose Public Utilities	135	1,011	439	3,668	5,251
Moose Lake Water & Light Comm	0	450	1,066	818	2,334
Mountain Iron Water & Light	0	789	757	172	1,718
Nashwauk Public Utilities	0	222	249	0	471
Newfolden Electric	0	178	162	0	341
Nielsville Village Light System	0	37	17	0	54
Peterson Public Utilities	0	114	0	0	114
Pierz Utilities	0	266	348	60	674

Minnesota Electric Sales Revenue for Municipal Utilities, Continued

2007 (In \$1,000's)	Farm	Non-Farm Residential	Commercial	Industrial	Total
<b>Other Municipals (continued)</b>					
Proctor Public Utilities	0	930	*	*	1,749
Randall City of	*	182	149	*	335
Round Lake Electric Dept	0	135	54	418	607
Rushford City of	0	680	*	*	1,282
Rushmore City of	0	126	32	1	159
Shelly Municipal Light Dept.	0	110	61	0	171
Spring Grove Municipal Electric	5	497	433	277	1,212
St Charles Light & Water	*	1,234	845	*	2,770
Two Harbors City of^	-	-	-	-	2,218
Virginia Dept of Public Utilities	0	3,040	6,250	0	9,291
Whalan City of	0	26	0	0	26
Willmar Municipal Utilities	0	5,784	6,967	7,251	20,002
<b>Total: Other Municipals</b>	<b>261</b>	<b>54,474</b>	<b>54,486</b>	<b>55,547</b>	<b>166,997</b>
<b>Southern Minnesota Municipal Power Agency</b>					
Austin Utilities	650	7,832	*	*	25,176
Blooming Prairie Utilities	0	624	1,331	0	1,955
Fairmont Public Utilities	308	3,330	4,002	3,355	10,996
Grand Marais Public Utilities	0	791	1,271	0	2,062
Lake City Utility Board	6	2,014	1,686	6,328	10,035
Litchfield Public Utilities	44	2,243	2,690	1,857	6,835
Mora Municipal Electric Utility	0	1,172	758	2,710	4,640
New Prague Municipal Utilities	0	1,735	748	2,863	5,346
North Branch Mun Water & Light	0	1,327	1,233	436	2,996
Owatonna Public Utilities	0	8,256	*	*	28,756
Preston Public Utilities	11	472	303	313	1,099
Princeton Public Utilities	0	2,149	1,332	2,000	5,481
Redwood Falls Public Utilities	0	1,759	1,353	1,211	4,323
Rochester Public Utilities	0	37,759	58,285	20,277	116,320
Spring Valley Public Utilities Comm	0	881	1,006	0	1,887
St Peter Municipal Utilities	0	3,215	3,542	1,957	8,714
Waseca Utility	0	2,882	1,127	1,441	5,451
Wells Public Utilities	0	902	1,035	0	1,937
<b>Total: SMMPA</b>	<b>1,020</b>	<b>79,344</b>	<b>100,498</b>	<b>63,148</b>	<b>244,009</b>
<b>Total: Municipal Utilities</b>	<b>1,662</b>	<b>246,358</b>	<b>224,752</b>	<b>262,680</b>	<b>737,682</b>
<b>Total: Minnesota</b>	<b>248,59</b>	<b>1,846,514</b>	<b>1,698,092</b>	<b>1,371,014</b>	<b>5,165,909</b>

Notes for Table 6

\* Withheld to avoid disclosure of individual company data. Data included in totals.

^ Data not provided by customer class.

**Table 7: Minnesota Residential Electric Space Heating Customers**

## 2007 Minnesota Electric Space Heating Customers for Investor-Owned Utilities

2007	Customers	Megawatt-Hours
<b>Investor-Owned Utilities</b>		
Alliant Energy-Interstate Power & Lt Co	1,501	14,826
Minnesota Power	12,813	170,721
Otter Tail Power Company	7,359	129,825
Xcel Energy	28,296	375,278
<b>Total: Investor-Owned Utilities</b>	<b>49,969</b>	<b>690,650</b>

## 2007 Minnesota Electric Space Heating Customers for Cooperative Utilities

2007	Customers	Megawatt-Hours
<b>Dairyland Power Cooperative</b>		
Freeborn Mower Electric Cooperative	510	5,387
Heartland Power Cooperative	5	81
Peoples Coop Power Assoc., Inc.	1,115	19,661
Tri-Co Electric Cooperative	1,707	49,920
<b>Total: Dairyland Power</b>	<b>3,337</b>	<b>75,049</b>
<b>East River Electric Cooperative</b>		
H-D Electric Cooperative, Inc	2	12
Lyon-Lincoln Electric Cooperative	855	11,388
Renville Sibley Cooperative Power	297	4,113
Traverse Electric Cooperative	774	19,000
<b>Total: East River Electric</b>	<b>1,928</b>	<b>34,513</b>

Minnesota Electric Space Heating Customers for Cooperative Utilities in 2007, Cont.

<b>2007</b>	<b>Customers</b>	<b>Megawatt-Hours</b>
<b>Great River Energy</b>		
Agralite Cooperative	1,273	11,900
Arrowhead Electric Cooperative	1,299	18,289
BENCO Electric Cooperative	417	6,998
Brown County Rural Electric Assn	404	4,325
Connexus Energy	596	7,112
Coop Light & Power Assoc of Lake Co	964	16,120
Crow Wing Cooperative Power & Light	7,763	86,763
Dakota Electric Association	1,403	22,579
East Central Electric Association	5,852	4,176
Federated Rural Electric Association	658	10,488
Goodhue County Coop Electric Assn	109	1,702
Itasca-Mantrap Cooperative Electric	2,111	38,657
Kandiyohi Cooperative Electric Power	1,548	10,413
Lake Country Power	9,154	125,240
Lake Region Cooperative Electric Assc	4,136	45,867
McLeod Cooperative Power Association	1,420	10,528
Meeker Cooperative Light & Power Assn	2,675	47,908
Mille Lacs Electric Cooperative	2,300	23,200
Minnesota Valley Electric Cooperative	4,835	*
Nobles Cooperative Electric	474	12,544
North Itasca Electric Cooperative	601	10,160
Redwood Electric Cooperative	523	14,556
Runestone Electric Association	3,609	72,613
South Central Electric Association	275	4,800
Stearns Cooperative Electric Assn	2,802	70,726
Steele Waseca Cooperative Electric	778	8,392
Todd Wadena Cooperative	2,430	29,160
Wright Hennepin Cooperative Electric	4,207	29,724
<b>Total: Great River Energy*</b>	<b>64,616</b>	<b>744,940</b>

Minnesota Electric Space Heating Customers for Cooperative Utilities in 2007, Cont.

<b>2007</b>	<b>Customers</b>	<b>Megawatt-Hours</b>
<b>Minnkota Power Cooperative</b>		
Beltrami Electric Cooperative	7,302	1,567
Clearwater-Polk Electric Cooperative	1,658	40,397
North Star Electric Cooperative	2,456	35,515
PKM Electric Cooperative	1,663	24
Red Lake Electric Cooperative	2,170	26,349
Red River Valley Cooperative Power	2,043	30,645
Roseau Electric Cooperative	2,947	45,266
Wild Rice Electric Cooperative	4,047	61,880
<b>Total: MPC – Cooperative</b>	<b>24,286</b>	<b>241,643</b>
<b>Other Cooperatives</b>		
Iowa Lakes Electric Cooperative	5	97
Minnesota Valley Coop Light & Power	265	3,071
Sioux Valley Southwestern Electric	620	21,955
<b>Total: Other Cooperatives</b>	<b>890</b>	<b>25,123</b>
<b>Total: Cooperatives</b>	<b>95,057</b>	<b>1,121,268</b>

2007 Minnesota Electric Space Heating Customers for Municipal Utilities

2007	Customers	Megawatt-Hours
<b>Central Minnesota Municipal Power Agency</b>		
Blue Earth Light & Water Department	64	643
Delano Municipal Utilities	90	996
Fairfax Municipal	108	1,668
Glencoe Light & Power Commission	106	1,415
Granite Falls City of	120	200
Kasson City Of	34	401
Kenyon Municipal Utilities	20	236
Lake Crystal Municipal	67	618
Madelia Municipal Light & Power	54	363
New Ulm Public Utilities	6	308
Sleepy Eye Public Utility	6	134
Truman Municipal Utility	32	4,478
Windom Municipal Utility	35	493
<b>Total: CMMPA</b>	<b>811</b>	<b>12,791</b>
<b>Heartland Consumers Power District</b>		
Marshall Municipal Utilities	1,584	24,560
Tyler Municipal Light & Power	100	3,400
<b>Total: Heartland</b>	<b>1,684</b>	<b>27,960</b>
<b>Minnesota Municipal Power Agency</b>		
Anoka City Of	78	1,269
Arlington City Of	11	286
Brownton Municipal Light & Power	30	291
Chaska City of	31	3,949
Le Sueur Municipal Utilities	6	76
North St Paul City Of	23	181
Olivia City Of	89	2,342
Shakopee Public Utilities	373	4,288
Winthrop City Of	3	116
<b>Total: MPPA</b>	<b>644</b>	<b>12,798</b>

Minnesota Electric Space Heating Customers for Municipal Utilities in 2007, Cont.

2007	Customers	Megawatt-Hours
<b>Missouri River Energy Services</b>		
Adrian Public Utilities	64	1,918
Alexandria Public Works	1,074	15,518
Barnesville Municipal Electric	331	5,927
Benson Municipal Utilities	157	1,087
Breckenridge Public Utilities	419	7,620
Detroit Lakes Public Utility	1,108	20,121
Elbow Lake Municipal Electric	110	1,980
Henning Electric Dept	84	1,293
Jackson Electric Light & Power	202	1,851
Lake Park Public Utilities	35	230
Lakefield City of	44	562
Luverne Municipal Utilities	265	4,023
Madison Municipal Utilities	110	1,684
Moorhead Public Service	761	11,319
Ortonville City Of	171	2,267
St. James City of	215	2,812
Sauk Centre Water Light & Power	246	3,253
Staples City of	50	563
Wadena Light & Water	355	6,602
Worthington Municipal Power	219	1,762
<b>Total: MRES</b>	<b>6,020</b>	<b>92,392</b>
<b>Northern Municipal Power Agency</b>		
Bagley Public Utility	223	3,276
Baudette City Of	110	1,363
Fosston Municipal Utility	324	3,867
Halstad Municipal Utilities	635	9,912
Hawley Public Utilities	163	1,527
Roseau Municipal Water & Light	356	8,486
Stephen Electric Dept	92	1,418
Thief River Falls Municipal Utilities	449	5,637
Warren City Of*	115	2,140
Warroad Municipal Light & Power	157	1,714
<b>Total: NMPA</b>	<b>2,624</b>	<b>39,340</b>

Minnesota Electric Space Heating Customers for Municipal Utilities in 2007, Cont.

2007	Customers	Megawatt-Hours
<b>Other Municipals</b>		
Ada Water & Light Dept	72	1,699
Aitkin Public Utilities	190	2,368
Alpha City of	2	39
Alvarado Electric Dept	34	467
Biwabik Water Light & Power	20	658
Brainerd Public Utilities	493	5,668
Buffalo City Of	285	2,992
Buhl Public Utilities**	2	340
Caledonia Municipal Light & Power	7	360
Darwin City of	22	301
Dundee City of	2	25
East Grand Forks Water & Light Dept	552	7,166
Eitzen Public Utilities	18	212
Elk River Municipal Utilities	313	4,248
Ely Water & Light Dept	64	8,000
Gilbert Water & Light	2	41
Grand Rapids Public Utilities	115	2,232
Hibbing Public Utilities Commission	581	6,001
Hutchinson Utilities Commission	263	2,629
Keewatin Public Utilities	4	1,012
Lanesboro Public Utilities	18	58
Mabel City of	5	97
Melrose Municipal Utilities	430	7,282
Moose Lake Water & Light Commission	104	784
Mountain Iron Water & Light	292	3,423
Nashwauk Public Utilities	8	90
Newfolden Electric	34	522
Peterson Public Utilities	15	131
Pierz Utilities	5	50
Proctor Public Utilities	181	2,296



Minnesota Electric Space Heating Customers for Municipal Utilities in 2007, Cont.

2007	Customers	Megawatt-Hours
<b>Other Municipals, continued</b>		
Randall Electric	6	162
Round Lake Electric Dept	3	275
Rushford City of	52	1,221
Rushmore City of	8	1
Shelly Municipal Light Dept.	30	429
St Charles Light & Water	135	1,085
Two Harbors City of	8	147
Virginia Dept of Public Utilities	358	7,301
Willmar Municipal Utilities	271	6,372
<b>Total: Other Municipals</b>	<b>5,005</b>	<b>78,183</b>
<b>Southern Minnesota Municipal Power Agency</b>		
Austin Utilities	200	1,129
Blooming Prairie Utilities	10	212
Fairmont Public Utilities	136	2,570
Grand Marais Utilities	131	2,710
Lake City Utility Board	56	488
Litchfield Public Utilities	439	9,140
Mora Municipal Electric Utility	88	881
New Prague Municipal Utilities	414	510
North Branch Municipal Water & Light	11	115
Owatonna Public Utilities***	106	1,060
Preston Public Utilities	17	648
Princeton Public Utilities	48	1,163
Redwood Falls Pub Utilities	628	11,281
Rochester Public Utilities	1,544	13,715
Spring Valley Public Utilities Comm***	5	298
St Peter Municipal Utilities	73	566
Waseca Water & Light Dept	112	777
Wells Public Utilities	72	405
<b>Total: SMMPA</b>	<b>4,090</b>	<b>47,668</b>
<b>Total: Municipal Utilities</b>	<b>20,878</b>	<b>311,132</b>
<b>Total: Minnesota</b>	<b>165,904</b>	<b>2,123,050</b>

Notes for Table 7

\* MVEC did not report MWH.

\*\* MWH data is from 2003.

\*\*\* 2007 data not submitted. Data is from 2006.

**Table 8: Minnesota Electric Consumption by County**

Minnesota Electric Consumption in 2007

<b>County</b>	<b>MWH</b>	<b>Consumption Rank*</b>	<b>Population Rank*</b>
Aitkin	230,608	55	54
Anoka	2,641,584	5	4
Becker	438,850	33	32
Beltrami	569,789	23	22
Benton	876,695	14	24
Big Stone	72,121	86	81
Blue Earth	840,523	15	15
Brown	364,655	37	40
Carlton	416,645	34	30
Carver	879,273	13	11
Cass	507,141	29	36
Chippewa	180,533	65	62
Chisago	376,399	36	18
Clay	625,676	19	17
Clearwater	249,182	51	75
Cook	87,012	81	82
Cottonwood	186,282	64	65
Crow Wing	972,378	10	14
Dakota	4,891,168	4	3
Dodge	198,810	61	48
Douglas	465,630	31	29
Faribault	227,903	56	58
Fillmore	192,382	63	45
Freeborn	413,086	35	34
Goodhue	582,304	22	20
Grant	76,431	84	79
Hennepin	13,767,136	1	1
Houston	174,387	66	49
Hubbard	316,216	42	51
Isanti	298,744	45	25
Itasca	611,109	21	21
Jackson	145,843	71	68
Kanabec	135,448	72	52
Kandiyohi	530,129	24	23
Kittson	149,425	68	84
Koochiching	518,478	27	61
Lac Qui Parle	131,843	74	76
Lake	204,334	60	67
Lake of the Woods	79,827	82	86
Le Sueur	335,414	40	38
Lincoln	74,471	85	80
Lyon	737,879	17	41
McLeod	522,284	25	27
Mahnomen	79,182	83	83
Marshall	220,684	58	71

## Minnesota Electric Consumption in 2007, Continued

County	MWH	Consumption Rank*	Population Rank*
Martin	329,242	41	46
Meeker	289,195	46	43
Mille Lacs	239,220	53	39
Morrison	469,551	30	31
Mower	454,547	32	26
Murray	99,399	78	74
Nicollet	343,738	38	33
Nobles	342,292	39	47
Norman	93,648	79	77
Olmstead	1,575,504	8	8
Otter Tail	742,663	16	16
Pennington	208,979	59	59
Pine	254,345	49	37
Pipestone	124,181	76	73
Polk	508,941	28	35
Pope	134,646	73	66
Ramsey	6,035,005	3	2
Red Lake	125,729	75	85
Redwood	221,529	57	56
Renville	301,106	44	53
Rice	673,912	18	13
Rock	146,198	70	72
Roseau	261,829	48	55
St. Louis	7,210,829	2	6
Scott	1,320,768	9	9
Sherburne	945,991	11	12
Sibley	236,774	54	57
Stearns	1,792,313	7	7
Steele	521,483	26	28
Stevens	150,765	67	70
Swift	197,537	62	63
Todd	305,794	43	42
Traverse	51,035	87	87
Wabasha	281,725	47	44
Wadena	242,213	52	60
Waseca	251,176	50	50
Washington	2,242,386	6	5
Watonwan	148,790	68	64
Wilkin	92,581	80	78
Winona	612,194	20	19
Wright	879,513	12	10
Yellow Medicine	122,494	77	69

Note for Table 8

\* Ranking is highest to lowest (1 is highest, 87 is lowest).

**Table 9: Utility-Owned Electric Generating Plants Serving Minnesota**

2007	Plant Profile				
	Unit Type	Fuel Type	Capacity		Year Installed
			Summer (MW)	Winter (MW)	
<b>Adrian Public Utilities</b>					
Adrian Power Plant Nobles County, MN					
Unit 5	Int Comb	Oil #2	2.000	2.000	2005
<b>Alliant Energy-Interstate Power and Light Company</b>					
Agency Street Gas Turbine Des Moines County, IA					
Unit 1	Gas Turbine	Gas/Oil #2	16.000	14.900	1989
Unit 2	Gas Turbine	Gas/Oil #2	15.500	14.000	1989
Unit 3	Gas Turbine	Gas/Oil #2	15.600	16.700	1989
Unit 4	Gas Turbine	Gas/Oil #2	15.900	17.400	1989
Ames Diesel Story County, IA					
Unit 1	Int Comb	Oil #2	0.000	0.000	1960
Unit 2	Int Comb	Oil #2	0.000	0.000	1960
Burlington Gas Turbine Des Moines County, IA					
Unit 1	Gas Turbine	Gas	16.800	0.000	1995
Unit 2	Gas Turbine	Gas	15.800	0.000	1995
Unit 3	Gas Turbine	Gas	19.000	0.000	1995
Unit 4	Gas Turbine	Gas	16.500	0.000	1996
Burlington Generating Station Des Moines County, IA					
Unit 1	Steam	Coal/Gas	191.900	194.500	1968
Centerville Diesel Apanoose County, IA					
Unit 1	Int Comb	Oil #2	2.200	2.200	1963
Unit 2	Int Comb	Oil #2	2.000	2.000	1963
Unit 3	Int Comb	Oil #2	2.000	2.000	1963

2007	Plant Profile				
	Unit Type	Fuel Type	Capacity		Year Installed
			Summer (MW)	Winter (MW)	
<b>Alliant Energy-Interstate Power and Light Company, continued</b>					
Centerville Gas Turbine Appanoose County, IA					
Unit 1	Gas Turbine	Oil #2	24.900	29.200	1990
Unit 2	Gas Turbine	Oil #2	24.100	28.300	1990
Dubuque Internal Combustion Dubuque County, IA					
Unit 1	Int Comb	Oil #2	2.200	2.200	1966
Unit 2	Int Comb	Oil #2	2.200	2.200	1966
Dubuque Steam Dubuque County, IA					
Unit 2	Steam	Coal/Gas	13.100	14.000	1929
Unit 3	Steam	Coal/Gas	28.600	28.900	1952
Unit 4	Steam	Coal/Gas	36.800	37.300	1959
Emery Cerro Gordo County, IA					
Unit 1	Gas Turbine	Gas	159.600	168.500	2004
Unit 2	Gas Turbine	Gas	156.700	165.400	2004
Unit 3	Steam	Gas	235.500	248.600	2004
Fox Lake Gas Turbine Martin County, MN					
Unit 4	Gas Turbine	Oil #2	0.000	0.000	1974
Fox Lake Steam Martin County, MN					
Unit 1	Steam	Gas/Oil #6	12.300	0.000	1950
Unit 2	Steam	Gas/Oil #6	0.000	0.000	1951
Unit 3	Steam	Coal/Gas/Oil #6	84.400	86.800	1962
Grinnell Gas Turbine Poweshiek County, IA					
Unit 1	Gas Turbine	Gas	23.800	0.000	1990
Unit 2	Gas Turbine	Gas	20.100	0.000	1990

2007	Plant Profile				
	Unit Type	Fuel Type	Capacity		Year Installed
			Summer (MW)	Winter (MW)	
<b>Alliant Energy-Interstate Power and Light Company, continued</b>					
Hills Internal Combustion Rock County, MN					
Unit 1	Int Comb	Oil #2	1.900	1.900	1996
Unit 2	Int Comb	Oil #2	1.900	1.900	1960
Lansing Internal Combustion Allamakee County, IA					
Unit 1	Int Comb	Oil #2	1.000	1.000	1970
Unit 2	Int Comb	Oil #2	1.000	1.000	1971
Lansing Steam Allamakee County, IA					
Unit 1	Steam	Coal/Oil #2	0.000	0.000	1948
Unit 2	Steam	Coal/Oil #2	0.000	0.000	1949
Unit 3	Steam	Coal/Oil #2	32.600	33.900	1957
Unit 4	Steam	Coal/Oil #2	262.100	262.600	1977
Lime Creek Cerro Gordo County, IA					
Unit 1	Gas Turbine	Oil #2	33.700	39.100	1991
Unit 2	Gas Turbine	Oil #2	34.500	39.900	1991
Louisa Station No. 1 (jointly owned) Louisa County, IA					
Unit 1	Steam	Coal/Gas	28.000	28.000	1983
M.L. Kapp Steam Clinton County, IA					
Unit 1	Steam	Gas	0.000	0.000	1947
Unit 2	Steam	Coal/Gas	212.000	215.000	1967

2007	Plant Profile				
	Unit Type	Fuel Type	Capacity		Year Installed
			Summer (MW)	Winter (MW)	
<b>Alliant Energy-Interstate Power and Light Company, continued</b>					
Marshalltown Gas Turbine Marshall County, IA					
Unit 1	Gas Turbine	Oil #2	55.400	63.400	1977
Unit 2	Gas Turbine	Oil #2	57.300	65.700	1977
Unit 3	Gas Turbine	Oil #2	54.400	62.100	1977
Montgomery Gas Turbine LeSueur County, MN					
Unit 1	Gas Turbine	Oil #2	19.500	23.400	1974
Neal No. 3 Woodbury County, IA					
Unit 3	Steam	Coal	144.200	144.200	1975
Neal No. 4 (jointly owned) Woodbury County, IA					
Unit 4	Steam	Coal/Oil #2	165.500	165.500	1979
Ottumwa Generating Station Wappello County, IA					
Unit 1	Steam	Coal/Oil #2	341.000	341.000	1981
Prairie Creek Linn County, IA					
Unit 1	Steam	Coal/Gas/Oil #2	0.300	0.300	1997
Unit 2	Steam	Coal/Gas	18.400	20.700	1950
Unit 3	Steam	Coal/Gas/Oil #2	45.500	46.600	1958
Unit 4	Steam	Coal/Gas/Oil #2/Landfill Gas	143.700	147.200	1968
Red Cedar Linn County, IA					
Unit 1	Gas Turbine	Gas	14.700	16.600	1996
Sixth Street Station Linn County, IA					
Unit 1	Steam	Coal	0.000	0.000	1921
Unit 2	Steam	Coal/Gas/REF	2.800	3.900	1930
Unit 4	Steam	Coal/Gas/REF	12.700	12.500	1941
Unit 6	Steam	Coal	0.000	0.000	1925
Unit 7	Steam	Coal/Gas/REF	14.700	7.800	1944
Unit 8	Steam	Coal/Gas/REF	29.200	26.800	1950

2006	Plant Profile				
	Unit Type	Fuel Type	Capacity		Installed
			Summer (MW)	Winter (MW)	
<b>Alliant Energy-Interstate Power and Light Company, continued</b>					
Sutherland Station Marshall County, IA					
Unit 1	Steam	Coal/Gas	31.100	31.100	1955
Unit 2	Steam	Coal/Gas	30.300	30.300	1955
Unit 3	Steam	Coal/Gas	79.400	80.500	1961
<b>Austin Utilities</b>					
DT Plant Mower County, MN					
Unit 1	Steam	Gas	5.000	5.000	1940
Unit 2	Steam	Gas	3.500	3.500	1935
Unit 3	Steam	Gas	7.500	7.500	1946
Unit 4	Steam	Gas	10.000	10.000	1955
Unit 5	Gas Turbine	Gas	5.000	5.000	1961
Northeast Plant Mower County, MN					
Unit 1	Steam	Coal/Gas	31.500	31.500	1971
<b>Benson Municipal Utilities</b>					
Benson Municipal Utilities Swift County, MN					
Unit 5	Int Comb	Oil #2	0.900	0.900	1947
Unit 6	Int Comb	Oil #2	1.300	1.300	1954
Unit 7	Int Comb	Oil #2	1.800	1.800	2002
Unit 8	Int Comb	Oil #2	1.800	1.800	2002
Unit 9	Int Comb	Oil #2	1.800	1.800	2002
Unit 10	Int Comb	Oil #2	1.800	1.800	2002
Unit 11	Int Comb	Oil #2	1.800	1.800	2002
<b>Blooming Prairie Public Utilities</b>					
Blooming Prairie Plant Steele County, MN					
Unit 2	Int Comb	Diesel	1.300	1.300	1975
Unit 3	Int Comb	Diesel	0.600	0.600	1947
Unit 4	Int Comb	Diesel	0.300	0.300	1937
Unit 5	Int Comb	Diesel	2.000	2.000	2003



2007	Plant Profile				
	Unit Type	Fuel Type	Capacity		Year Installed
			Summer (MW)	Winter (MW)	
<b>Blue Earth Light &amp; Water Dept</b>					
Blue Earth City Plant Faribault County, MN					
Unit 1	Int Comb	Oil #2/Gas	1.500	1.500	1960
Unit 3	Int Comb	Oil #2	1.600	1.650	1993
Unit 4	Int Comb	Oil #2	1.600	1.650	1993
Unit 5	Int Comb	Oil #2	1.600	1.650	1993
Unit 6	Int Comb	Oil #2	1.825	1.825	1995
<b>Dairyland Power Cooperative</b>					
Alma Station Buffalo County, WI					
Unit 1	Steam	Coal/Oil #2	18.300	19.980	1947
Unit 2	Steam	Coal/Oil #2	18.090	19.750	1947
Unit 3	Steam	Coal/Oil #2	17.900	19.550	1950
Unit 4	Steam	Coal/Oil #2	54.300	59.290	1957
Unit 5	Steam	Coal/Oil #2	77.240	84.470	1960
Elk Mound Combustion Turbine Rusk County, WI					
Unit 1	Gas Turbine	Gas	35.966	46.993	2001
Unit 2	Gas Turbine	Gas	35.035	45.782	2001
Five Star Dairy Dunn County, WI					
Unit 1	Int Comb	Biogas	0.775	0.775	2005
Flambeau Hydroelectric Rusk County, WI					
Unit 1	Hydro	Water	7.190	7.190	1951
Unit 2	Hydro	Water	8.280	8.280	1951
Unit 3	Hydro	Water	6.000	6.000	1951
Genoa 3 (half sold to GRE) Vernon County, WI					
Unit 3	Steam	Coal/Oil #2	349.870	375.750	1969
JP Madgett Buffalo County, WI					
Unit 6	Steam	Coal/Oil #2	396.070	398.750	1979

2007	Plant Profile				
	Unit Type	Fuel Type	Capacity		Year Installed
			Summer (MW)	Winter (MW)	
<b>Dairyland Power, cont.</b>					
Norswiss Dairy Barron County, WI					
Unit 1	Int Comb	Biogas	0.848	0.848	2006
Onyx Seven Mile Landfill Eau Claire County, WI					
Unit 1	Int Comb	Landfill Gas	1.025	1.025	2004
Unit 2	Int Comb	Landfill Gas	1.025	1.025	2004
Unit 3	Int Comb	Landfill Gas	1.025	1.025	2004
Wild Rose Dairy Vernon County, WI					
Unit 1	Int Comb	Biogas	0.775	0.775	2005
<b>Delano Municipal Utilities</b>					
Delano Municipal Plant Wright County, MN					
Unit 1	Int Comb	Oil #2	0.840	0.840	1946
Unit 3	Int Comb	Oil #2	1.136	1.136	1951
Unit 4	Int Comb	Gas/Oil #2	1.140	1.140	1972
Unit 5	Int Comb	Gas/Oil #2	1.365	1.365	1973
Unit 6	Int Comb	Oil #2	1.250	1.250	1989
Unit 7	Int Comb	Oil #2	3.000	3.000	1994
Unit 8	Int Comb	Oil #2	3.125	3.125	1998
Unit 9	Int Comb	Oil #2	12.000	12.000	2002
<b>East Grand Forks Water and Light Dept</b>					
Distribution Service Center Polk County, MN					
Unit 1	Int Comb	Diesel	0.800	0.800	2002
Water Treatment Plant Polk County, MN					
Unit 1	Int Comb	Diesel	0.750	0.750	2002
<b>Elk River Municipal Utilities</b>					
Elk River Municipal Utilities Diesel Plant Sherburne County, MN					
Unit 1	Int Comb	Diesel	0.500	0.500	1948
Unit 2	Int Comb	Diesel	0.500	0.500	1948

Unit 3	Int Comb	Diesel/Gas	3.000	3.000	1962
Unit 4	Int Comb	Diesel	5.000	5.000	1972
<b>Fairfax Municipal</b>					
Fairfax Municipal Power Plant Renville County, MN					
Unit 2A	Int Comb	Oil #2	1.820	1.820	2001

2007	Plant Profile				
	Unit Type	Fuel Type	Capacity		Year Installed
			Summer (MW)	Winter (MW)	
<b>Fairmont Public Utilities</b>					
Fairmont Power Plant Martin County, MN					
Unit 3	Steam	Gas	5.000	5.000	1945
Unit 4	Steam	Gas	5.000	5.000	1949
Unit 5	Steam	Gas	12.500	12.500	1959
Unit 6	Int Comb	Gas/Oil #2	6.000	6.000	1975
Unit 7	Int Comb	Gas/Oil #2	6.000	6.000	1975
<b>Glencoe Light and Power Commission</b>					
Glencoe Municipal Electric Plant McLeod County, MN					
Unit 5	Int Comb	Oil #2/Gas	1.100	1.100	1957
Unit 6	Int Comb	Oil #2/Gas	1.100	1.100	1961
Unit 7	Int Comb	Oil #2/Gas	3.900	3.900	1966
Unit 8	Int Comb	Oil #2/Gas	5.600	5.600	1969
Unit 9	Int Comb	Oil #2/Gas	7.100	7.100	1973
Unit 10	Int Comb	Diesel	6.700	6.700	1985
Unit 11	Int Comb	Diesel	4.600	4.600	1998
Unit 12	Int Comb	Diesel	4.600	4.600	1998
Unit 14	Int Comb	Diesel	4.600	4.600	2006
<b>Grand Marais Public Utilities</b>					
Grand Marais Power Plant Cook County, MN					
Unit 1	Int Comb	Oil #2	2.250	2.250	2004
Unit 2	Int Comb	Oil #2	1.800	1.800	2004
Unit 3	Int Comb	Oil #2	1.800	1.800	2004
<b>Granite Falls, City of</b>					
Granite Falls Municipal Hydroelectric Yellow Medicine County, MN					
Unit 1	Hydro	Water	0.300	0.300	1940
Unit 2	Hydro	Water	0.250	0.250	1932
Unit 3	Hydro	Water	0.867	0.867	1986

2007	Plant Profile				
	Unit Type	Fuel Type	Capacity		Year Installed
			Summer (MW)	Winter (MW)	
<b>Granite Falls Municipal Utilities, continued</b>					
Granite Falls Diesel Yellow Medicine County, MN					
Unit 1	Int Comb	Diesel	2.200	2.200	2002
Unit 2	Int Comb	Diesel	2.200	2.200	2002
Unit 3	Int Comb	Diesel	2.200	2.200	2002
<b>Great River Energy</b>					
Cambridge Gas Turbine Plant Isanti County, MN					
Unit 1	Gas Turbine	Oil #2	21.000	28.000	1978
Unit 2	Gas Turbine	Gas	155.000	N/A	2007
Coal Creek Diesel McLean County, ND					
Unit 1	Int Comb	Diesel	2.100	2.100	1979
Coal Creek Station McLean County, ND					
Unit 1	Steam	Coal	549.000	550.000	1979
Unit 2	Steam	Coal	573.000	574.000	1980
Elk River Station Sherburne County, MN					
Unit 1	Steam	RDF/Gas/Oil #2	10.100	10.100	1951
Unit 2	Steam	RDF/Gas/Oil #2	10.500	10.500	1951
Unit 3	Steam	RDF/Gas/Oil #2	16.200	16.200	1959
Lakefield Junction Martin County, MN					
Unit 1	Gas Turbine	Gas/Oil #2	83.000	96.000	2001
Unit 2	Gas Turbine	Gas/Oil #2	83.000	95.000	2001
Unit 3	Gas Turbine	Gas/Oil #2	84.000	96.000	2001
Unit 4	Gas Turbine	Gas/Oil #2	82.000	95.000	2001
Unit 5	Gas Turbine	Gas/Oil #2	84.000	97.000	2001
Unit 6	Gas Turbine	Gas/Oil #2	84.000	95.000	2001
Maple Lake Wright County, MN					
Unit 1	Gas Turbine	Oil #2	20.000	26.000	1978

2007	Plant Profile				
	Unit Type	Fuel Type	Capacity		Year Installed
			Summer (MW)	Winter (MW)	
<b>Great River Energy, continued</b>					
Pleasant Valley Station Mower County, MN					
Unit 11	Gas Turbine	Gas/Oil #2	151.000	165.000	2001
Unit 12	Gas Turbine	Gas/Oil #2	148.000	175.000	2001
Unit 13	Gas Turbine	Gas/Oil #2	120.000	126.000	2002
Rock Lake Pine County, MN					
Unit 1	Gas Turbine	Oil #2	20.000	26.000	1978
St. Bonifacious Power Plant Carver County, MN					
Unit 1	Gas Turbine	Oil #2	57.000	69.000	1978
Stanton Station Steam Plant Mercer County, ND					
Unit 1	Steam	Coal/Oil #2	188.300	188.300	1966
<b>Halstad Municipal Utilities</b>					
Halstad Diesel Plant Norman County, MN					
Unit 1	Int Comb	Diesel	2.000	2.000	2007
Unit 2	Int Comb	Diesel	2.000	2.000	2007
<b>Hastings Public Utilities Commission</b>					
Hastings Hydroelectric Facility Dakota County, MN					
Unit 1	Hydro	Water	2.200	2.200	1987
Unit 2	Hydro	Water	2.200	2.200	1987

2006	Plant Profile				
	Unit Type	Fuel Type	Capacity		Year Installed
			Summer (MW)	Winter (MW)	
<b>Hawley Public Utilities</b>					
Hawley Plant Clay County, MN					
Unit 1	Int Comb	Oil #2	0.100	0.100	1932
Unit 2	Int Comb	Oil #2	0.700	0.700	1957
Unit 3	Int Comb	Oil #2	0.100	0.100	1938
Unit 4	Int Comb	Oil #2	0.300	0.300	1947
Unit 5	Int Comb	Oil #2	0.300	0.300	1947
<b>Hibbing Public Utilities Commission</b>					
Hibbing Public Utilities Plant St. Louis County, MN					
Unit 3	Steam	Coal/Gas	11.500	11.500	1965
Unit 5	Steam	Coal/Gas	20.500	20.500	1984
Unit 6	Steam	Coal/Gas	1.500	6.000	1996
<b>Hutchinson Utilities Commission</b>					
Hutchinson Municipal Plant No. 1 McLeod County, MN					
Unit 2	Int Comb	Gas/Oil #2	1.970	1.970	1958
Unit 3	Int Comb	Gas/Oil #2	3.900	3.900	1968
Unit 4	Int Comb	Gas/Oil #2	3.900	3.900	1968
Unit 5	Int Comb	Oil #2	1.740	1.700	1941
Unit 6	Int Comb	Oil #2	1.740	1.740	1942
Unit 7	Int Comb	Gas/Oil #2	4.500	4.500	1965
Unit 8	Comb Cycle	Gas/Oil #2	11.000	13.300	1971
Hutchinson Municipal Plant No. 2 McLeod County, MN					
Unit 1	Comb Cycle	Gas	41.000	41.000	1994
Unit 2	Comb Cycle	Steam	10.000	10.000	1994
Unit 9	Gas Turbine	Gas/Oil #2	22.000	24.000	1997

2007	Plant Profile				
	Unit Type	Fuel Type	Capacity		Year Installed
			Summer (MW)	Winter (MW)	
<b>Janesville Municipal Utility</b>					
Janesville Municipal Plant Waseca County, MN					
Unit 1	Int Comb	Oil #2/Gas	1.300	1.300	1972
Unit 2	Int Comb	Oil #2/Gas	1.100	1.100	1964
Unit 3	Int Comb	Oil #2/Gas	0.600	0.600	1955
Unit 4	Int Comb	Oil #2	1.800	1.800	1998
<b>Kenyon Municipal Utility</b>					
Kenyon Municipal Plant Goodhue, MN					
Unit 5	Int Comb	Oil #2	1.825	1.825	1997
Unit 6	Int Comb	Oil #2	1.825	1.825	1997
Unit 7	Int Comb	Oil #2	1.825	1.825	1997
<b>Lake Crystal Municipal Utilities</b>					
Lake Crystal Plant Blue Earth County, MN					
Unit 1	Int Comb	Gas/Oil #2	0.700	0.700	1952
Unit 3	Int Comb	Gas/Oil #2	2.100	2.100	1971
Unit 4	Int Comb	Gas/Oil #2	1.300	1.300	1955
Unit 5	Int Comb	Oil #2	1.800	1.800	1999
<b>Lakefield, City of</b>					
Lakefield Power Plant Jackson County, MN					
Unit 5	Int Comb	Fuel Oil #2	1.000	1.000	1986
Unit 6	Int Comb	Fuel Oil #2	2.000	2.200	2003
<b>Lanesboro Public Utilities</b>					
Lanesboro Power Plant Fillmore County, MN					
Nordberg	Int Comb	Diesel	0.800	0.800	1968
Fairbanks	Int Comb	Diesel	2.200	2.300	2004
Lanesboro Power Plant - Hydroelectric Fillmore County, MN					
Unit 1	Hydro	Water	0.200	0.200	1923



2006	Plant Profile				
	Unit Type	Fuel Type	Capacity		Year Installed
			Summer (MW)	Winter (MW)	
<b>Litchfield Public Utilities</b>					
Litchfield Power Plant Meeker County, MN					
Unit 1	Int Comb	Diesel/Gas	2.100	2.100	1962
Unit 2	Int Comb	Diesel/Gas	2.100	2.100	1962
<b>Luverne, City of</b>					
Luverne Power Plant Rock County, MN					
Unit 1	Int Comb	Diesel	3.500	3.500	1967
<b>Madelia Municipal Light &amp; Power</b>					
Madelia Municipal Plant Watonswan County, MN					
Unit 1	Int Comb	Oil #2/Gas	2.800	3.160	2001
Unit 2	Int Comb	Oil #2/Gas	1.700	2.000	1966
Unit 3	Int Comb	Oil #2/Gas	0.800	0.800	1959
Unit 4	Int Comb	Oil #2/Gas	3.750	4.000	1973
Unit 5	Int Comb	Oil #2/Gas	1.200	1.200	1954
<b>Marshall Municipal Utilities</b>					
Marshall Power Plant Lyon County, MN					
Unit 6	Gas Turbine	Oil #2	15.000	19.000	1969
<b>Melrose Public Utilities</b>					
Melrose Power Plant Stearns County, MN					
Unit 1	Int Comb	Oil #2	0.750	0.750	1945
Unit 2	Int Comb	Oil #2	0.825	0.825	1948
Unit 3	Int Comb	Oil #2/Gas	3.000	3.000	1969
Unit 4	Int Comb	Oil #2/Gas	3.000	3.000	1969
<b>Minnesota Power Company</b>					
Blanchard Hydroelectric Station Morrison County, MN					
Unit 1	Hydro	Water	5.500	5.500	1925
Unit 2	Hydro	Water	5.500	5.500	1925
Unit 3	Hydro	Water	5.500	5.500	1988

2007	Plant Profile				
	Unit Type	Fuel Type	Capacity		Year Installed
			Summer (MW)	Winter (MW)	
<b>Minnesota Power Company, continued</b>					
Boswell EC Itasca County, MN					
Unit 1	Steam	Coal/Oil #2	69.000	69.000	1958
Unit 2	Steam	Coal/Oil #2	69.000	69.000	1960
Unit 3	Steam	Coal/Oil #2	350.500	350.500	1973
Unit 4	Steam	Coal/Oil #2	428.000	428.000	1980
Fond Du Lac Hydroelectric Station St. Louis County, MN					
Unit 1	Hydro	Water	11.000	11.000	1924
Knife Falls Hydro Station Carlton County, MN					
Unit 1	Hydro	Water	0.640	0.640	1922
Unit 2	Hydro	Water	0.630	0.630	1922
Unit 3	Hydro	Water	0.630	0.630	1922
Laskin EC St. Louis County, MN					
Unit 1	Steam	Coal/Oil #2	55.000	55.000	1953
Unit 2	Steam	Coal/Oil #2	53.580	53.580	1953
Little Falls Hydro Station Morrison County, MN					
Unit 1	Hydro	Water	0.900	0.900	1919
Unit 2	Hydro	Water	0.900	0.900	1919
Unit 3	Hydro	Water	0.900	0.900	1920
Unit 4	Hydro	Water	1.500	1.500	1979
Unit 5	Hydro	Water	0.000	0.000	1906
Unit 6	Hydro	Water	0.200	0.200	1906
M.L. Hibbard Steam Station St. Louis County, MN					
Unit 3	Steam	Coal/Wood	32.175	32.175	1949
Unit 4	Steam	Coal/Wood	17.699	13.389	1951
Pillager Hydro Station Cass County, MN					
Unit 1	Hydro	Water	0.850	0.850	1917
Unit 2	Hydro	Water	0.850	0.850	1917

2007	Plant Profile				
	Unit Type	Fuel Type	Capacity		Year Installed
			Summer (MW)	Winter (MW)	
<b>Minnesota Power Company, continued</b>					
Prairie River Hydroelectric Station Itasca County, MN					
Unit 1	Hydro	Water	0.300	0.300	1921
Unit 2	Hydro	Water	0.000	0.000	1921
Rapids Energy Center Itasca County, MN					
Unit 4	Hydro	Water	0.086	0.140	1917
Unit 5	Hydro	Water	0.010	1.000	1948
Unit 6	Steam	Gas/Wood/Coal	14.290	13.600	1969
Unit 7	Steam	Gas/Wood/Coal	14.220	14.420	1980
Sappi Cloquet Turbine Generator 5 Carlton County, MN					
Unit 5	Steam	Wood/Gas	22.302	22.302	2001
Scanlon Hydroelectric Station Carlton County, MN					
Unit 1	Hydro	Water	0.350	0.350	1923
Unit 2	Hydro	Water	0.350	0.350	1923
Unit 3	Hydro	Water	0.350	0.350	1923
Unit 4	Hydro	Water	0.350	0.350	1923
Sylvan Hydroelectric Station Cass County, MN					
Unit 1	Hydro	Water	0.800	0.800	1913
Unit 2	Hydro	Water	0.600	0.600	1913
Unit 3	Hydro	Water	0.500	0.500	1915
Taconite Harbor Cook County, MN					
Unit 1	Steam	Coal/Oil #2	66.230	72.860	1953
Unit 2	Steam	Coal/Oil #2	67.750	74.530	1953
Unit 3	Steam	Coal/Oil #2	66.010	72.620	1954

2007	Plant Profile				
	Unit Type	Fuel Type	Capacity		Year Installed
			Summer (MW)	Winter (MW)	
<b>Minnesota Power Company, continued</b>					
Thomson Hydro Station Carlton County, MN					
Unit 1	Hydro	Water	11.900	11.900	1907
Unit 2	Hydro	Water	10.900	10.900	1907
Unit 3	Hydro	Water	11.700	11.700	1907
Unit 4	Hydro	Water	11.900	11.900	1914
Unit 5	Hydro	Water	10.900	10.900	1918
Unit 6	Hydro	Water	14.000	14.000	1949
Winton Hydro Station Lake County, MN					
Unit 2	Hydro	Water	2.100	2.100	1923
Unit 3	Hydro	Water	2.200	2.200	1923
<b>Minnkota Power Cooperative, Inc.</b>					
Coyote Station Mercer County, ND					
Unit 1	Steam	Coal/Oil #2	427.000	427.000	1981
Grand Forks Diesel Plant Grand Forks County, ND					
Unit 1	Int Comb	Oil #2	0.679	0.679	1941
Unit 2	Int Comb	Oil #2	0.679	0.679	1941
Unit 3	Int Comb	Oil #2	0.679	0.679	1941
Unit 4	Int Comb	Oil #2	0.970	0.970	1946
Unit 5	Int Comb	Oil #2	0.970	0.970	1946
Unit 6	Int Comb	Oil #2	0.970	0.970	1946
Unit 7	Int Comb	Oil #2	1.067	1.067	1949
Unit 8	Int Comb	Oil #2	1.067	1.067	1949
Unit 9	Int Comb	Oil #2	1.067	1.067	1949
Unit 10	Int Comb	Oil #2	1.067	1.067	1949
Unit 11	Int Comb	Oil #2	1.067	1.067	1949
Harwood Diesel Plant Cass County, ND					
Unit 2	Int Comb	Oil #2	1.600	1.600	1947
Unit 3	Int Comb	Oil #2	1.552	1.552	1947

2007	Plant Profile				
	Unit Type	Fuel Type	Capacity		Year Installed
			Summer (MW)	Winter (MW)	
<b>Minnkota Power Coop, Inc., continued</b>					
Infinity Wind Valley City Grand Forks County, ND					
Unit 1	Wind Turbine	Wind	0.900	0.900	2002
Infinity Wind Petersburg Grand Forks County, ND					
Unit 1	Wind Turbine	Wind	0.900	0.900	2002
Milton R. Young (29% share of Unit 2) Oliver County, ND					
Unit 1	Steam	Coal/Oil #2	250.000	250.000	1970
Unit 2	Steam	Coal/Oil #2	448.000	455.000	1977
<b>Moorhead, City of</b>					
Moorhead Power Plant Clay County, MN					
Unit 6	Gas Turbine	Oil #2	10.000	10.000	1960
Unit 8	Wind Turbine	Wind	0.750	0.750	1999
Unit 9	Wind Turbine	Wind	0.750	0.750	2001
<b>Moose Lake Water &amp; Light Commission</b>					
Moose Lake Municipal Plant Carlton County, MN					
Unit 1	Int Comb	Oil #2	1.360	1.360	1973
Unit 2	Int Comb	Oil #2	1.136	1.136	1953
Unit 4	Int Comb	Oil #2	1.360	1.360	1962
Unit 1 South	Int Comb	Oil #2	2.000	2.000	2005
Unit 2 South	Int Comb	Oil #2	2.000	2.000	2005
Unit 3	Int Comb	Oil #2	2.000	2.000	2005
<b>Mora Municipal Utilities</b>					
Mora Power Plant Kanabec County, MN					
Unit 2	Int Comb	Diesel/Gas	1.200	1.200	1947
Unit 5	Int Comb	Diesel/Gas	5.800	5.800	1971
Unit 6	Int Comb	Diesel/Gas	6.400	6.400	1974

2006	Plant Profile				
	Unit Type	Fuel Type	Capacity		Year Installed
			Summer (MW)	Winter (MW)	
<b>New Prague Utilities Commission</b>					
New Prague Power Plant LeSueur County, MN					
Unit 1	Int Comb	Diesel	0.900	0.900	1949
Unit 2	Int Comb	Diesel/Gas	4.400	4.400	1974
Unit 3	Int Comb	Diesel/Gas	2.400	2.400	1963
Unit 4	Int Comb	Diesel/Gas	3.500	3.500	1968
Unit 5	Int Comb	Gas	0.400	0.400	1943
Unit 6	Int Comb	Diesel/Gas	6.000	6.000	1981
<b>New Ulm Public Utilities</b>					
New Ulm Gas Turbine Plant Brown County, MN					
Unit 5	Gas Turbine	Oil #2	23.000	25.400	1975
Unit 7	Gas Turbine	Oil #2	25.000	27.000	2001
New Ulm Steam Plant Brown County, MN					
Unit 4	Steam	Coal/Gas	13.200	13.200	1963
Unit 6	Steam	Coal/Gas	4.700	4.300	1947
<b>North Branch Water &amp; Light</b>					
North Branch Plant Chisago County, MN					
Unit 1	Int Comb	Diesel/Gas	0.900	0.900	1960
Unit 2	Int Comb	Diesel/Gas	1.300	1.300	1971
Unit 3	Int Comb	Diesel	2.000	2.000	2003
Unit 4	Int Comb	Diesel	2.000	2.000	2003

2007	Plant Profile				
	Unit Type	Fuel Type	Capacity		Year Installed
			Summer (MW)	Winter (MW)	
<b>Otter Tail Power Company</b>					
Bemidji Hydroelectric Beltrami County, MN					
Unit 1	Hydro	Water	0.170	0.180	1907
Unit 2	Hydro	Water	0.550	0.575	1907
Big Stone Plant Grant County, SD					
Unit 1	Steam	Coal/RDF	250.958	256.025	1975
Unit 2	Int Comb	Oil #2	0.619	0.000	1975
Coyote Station (35% share) Mercer County, ND					
Unit 1	Steam	Coal/Oil #2	149.450	149.450	1981
Dayton Hollow Hydro Otter Tail County, MN					
Unit 1	Hydro	Water	0.562	0.556	1909
Unit 2	Hydro	Water	0.478	0.466	1919
Fergus Control Center Otter Tail County, MN					
Unit 1	Int Comb	Oil #2	2.091	2.066	1995
Hoot Lake Hydroelectric Otter Tail County, MN					
Unit 1	Hydro	Water	0.753	0.788	1914
Hoot Lake Steam Plant Otter Tail County, MN					
Unit 2	Steam	Coal/Oil #2	58.875	60.325	1959
Unit 2A	Int Comb	Oil #2	0.255	0.252	1959
Unit 3	Steam	Coal/Oil #2	84.000	84.000	1964
Unit 3A	Int Comb	Oil #2	0.168	0.182	1964
Jamestown Turbine Stutsman County, ND					
Unit 1	Int Comb	Oil #2	23.270	27.890	1976
Unit 2	Int Comb	Oil #2	24.103	28.147	1978
Lake Preston Turbine Kingsbury County, SK					
Unit 1	Int Comb	Oil #2	21.523	27.114	1978

2007	Plant Profile				
	Unit Type	Fuel Type	Capacity		Year Installed
			Summer (MW)	Winter (MW)	
<b>Otter Tail Power Company, continued</b>					
Pisgah Hydroelectric Otter Tail County, MN					
Unit 1	Hydro	Water	0.750	0.720	1918
Potlatch Cogeneration Beltrami County, MN					
Unit 1	Steam	Wood Waste/REF	5.862	5.862	1992
Solway Beltrami County, MN					
Unit 1	Gas Turbine	Gas/Oil #2	41.947	45.847	2003
Taplin Gorge Hydroelectric Otter Tail County, MN					
Unit 1	Hydro	Water	0.529	0.565	1925
Wright Hydroelectric Otter Tail County, MN					
Unit 1	Hydro	Water	0.502	0.488	1922
<b>Preston Public Utilities</b>					
Preston Power Plant Fillmore County, MN					
Unit 4	Int Comb	Diesel	0.600	0.600	1949
Unit 5	Int Comb	Diesel	1.000	1.000	1957
Unit 6	Int Comb	Diesel/Gas	2.000	2.000	1973
<b>Princeton Public Utilities</b>					
Princeton Power Plant Mille Lacs County, MN					
Unit 3	Int Comb	Oil #2	2.400	2.400	1977
Unit 4	Int Comb	Oil #2	1.200	1.200	1967
Unit 5	Int Comb	Oil #2	1.000	1.000	1953
Unit 6	Int Comb	Oil #2	2.700	2.700	1963
Unit 7	Int Comb	Oil #2/Gas	5.000	5.000	2002



2007	Plant Profile				
	Unit Type	Fuel Type	Capacity		Year Installed
			Summer (MW)	Winter (MW)	
<b>Redwood Falls Public Utilities Commission</b>					
Redwood Falls Power Plant Redwood County, MN					
Unit 1A	Hydro	Water	0.500	0.500	1930
Unit 7	Int Comb	Diesel/Gas	5.800	5.800	1974
Southside Substation Plant Redwood County, MN					
Unit 2	Int Comb	Diesel	2.250	2.250	1968
Unit 3	Int Comb	Diesel	2.000	2.000	2002
Unit 4	Int Comb	Diesel	2.000	2.000	2002
Unit 5	Int Comb	Diesel	2.000	2.000	2002
<b>Rochester Public Utilities</b>					
Cascade Creek Olmsted County, MN					
Unit 1	Gas Turbine	Gas/Oil #6	31.000	31.000	1974
Unit 2	Gas Turbine	Gas/Oil #6	49.500	49.500	2002
Lake Zumbro Hydro Wabasha County, MN					
Unit 1	Hydro	Water	1.300	1.000	1984
Unit 2	Hydro	Water	1.300	1.000	1984
Silver Lake Steam Plant Olmsted County, MN					
Unit 1	Steam	Coal/Gas	9.000	9.000	1949
Unit 2	Steam	Coal/Gas	14.000	14.000	1953
Unit 3	Steam	Coal/Gas	24.000	24.000	1962
Unit 4	Steam	Coal/Gas	59.000	59.000	1969
<b>St. Charles Light &amp; Water</b>					
St. Charles Power Plant Winona County, MN					
Unit 1	Int Comb	Diesel	70.600	39.300	2004
Unit 2	Int Comb	Diesel	69.700	38.500	2004
Unit 3	Int Comb	Diesel	69.200	38.700	2004
Unit 4	Int Comb	Diesel	70.700	39.300	2004

2007	Plant Profile				
			Capacity		
	Unit Type	Fuel Type	Summer (MW)	Winter (MW)	Year Installed
<b>St. James Municipal Light &amp; Power</b>					
Diesel Generation Plant Watowan County, MN					
Unit 1	Int Comb	Diesel	2.000	2.000	2002
Unit 2	Int Comb	Diesel	2.000	2.000	2002
Unit 3	Int Comb	Diesel	2.000	2.000	2002
Unit 4	Int Comb	Diesel	2.000	2.000	2002
Unit 5	Int Comb	Diesel	2.000	2.000	2002
Unit 6	Int Comb	Diesel	2.000	2.000	2002
<b>Sleepy Eye Public Utility</b>					
Sleepy Eye Power Plant Brown County, MN					
Unit 1	Int Comb	Oil #2	1.800	1.800	1999
Unit 2	Int Comb	Oil #2	1.800	1.800	2001
Unit 3	Int Comb	Oil #2	1.500	1.500	1961
Unit 4	Int Comb	Oil #2	1.800	1.800	1995
Unit 5	Int Comb	Oil #2	1.800	1.800	1996
<b>Southern Minnesota Municipal Power Agency</b>					
Blooming Prairie Plant Steele County, MN					
Unit 2	Int Comb	Oil #2/Gas	1.390	1.390	1975
Unit 5	Int Comb	Oil #2/Gas	2.000	2.000	2003
Fairmont Wind Farm Martin County, MN					
Unit 1	Wind Turbine	Wind	1.000	1.000	2003
Unit 2	Wind Turbine	Wind	1.000	1.000	2003
Unit 3	Wind Turbine	Wind	1.650	1.650	2004
Unit 4	Wind Turbine	Wind	1.650	1.650	2005
Owatonna Downtown Steele County, MN					
Unit 6	Steam	Gas	21.910	21.910	1969

2006	Plant Profile				
			Capacity		
	Unit Type	Fuel Type	Summer (MW)	Winter (MW)	Year Installed
<b>Southern Minnesota Municipal Power Agency, continued</b>					
Owatonna West Sub. Steele County, MN					
Unit 7	Gas Turbine	Gas	17.020	20.700	1982
Redwood Falls Wind Farm Redwood County, MN					
Unit 1	Wind Turbine	Wind	1.650	1.650	2004
Unit 2	Wind Turbine	Wind	1.650	1.650	2005
St. Peter Nicollet County, MN					
Units 1 - 6	Int Comb	Oil #2	12.000	12.000	2003
Sherburne Steam Plant (41% share) Sherburne County, MN					
Unit 3	Steam	Coal/Oil #2	362.000	365.000	1988
<b>Spring Valley Public Utilities Commission</b>					
Spring Valley Plant Fillmore County, MN					
Unit 2	Int Comb	Gas/Oil #2	1.136	1.136	1952
Unit 3	Int Comb	Gas/Oil #2	2.000	2.000	1960

2007	Plant Profile				
	Unit Type	Fuel Type	Capacity		Year Installed
			Summer (MW)	Winter (MW)	
<b>Steele Waseca Cooperative Electric*</b>					
Windmills Co-Generators Steele County, MN					
Unit 1	Wind	Wind	0.004	0.004	1984
Unit 2	Wind	Wind	0.018	0.018	1984
Unit 4	Wind	Wind	0.035	0.035	1997
Unit 5	Wind	Wind	0.039	0.039	2002
Unit 6	Wind	Wind	0.039	0.039	2002
Unit 7	Wind	Wind	0.039	0.039	2002
Unit 8	Wind	Wind	0.020	0.020	2002
Unit 9	Wind	Wind	0.039	0.039	2002
Unit 10	Wind	Wind	0.039	0.039	2002
Unit 11	Wind	Wind	0.039	0.039	2003
Unit 12	Wind	Wind	0.039	0.039	2003
<b>Thief River Falls Municipal Utilities</b>					
Thief River Falls Municipal Power Plant Pennington County, MN					
Unit 1	Hydro	Water	0.250	0.250	1927
Unit 2	Hydro	Water	0.300	0.300	1927
Thief River Falls Municipal Power Plant Pennington County, MN					
Unit 1	Int Comb	Oil #2	1.300	1.300	1956
Unit 2	Int Comb	Oil #2	1.100	1.100	1953
Unit 3	Int Comb	Oil #2	1.270	1.270	2000
Unit 4	Int Comb	Oil #2	2.000	2.000	1946

2007	Plant Profile				
	Unit Type	Fuel Type	Capacity		Year Installed
			Summer (MW)	Winter (MW)	
<b>Two Harbors, City of</b>					
Two Harbors Plant Lake County, MN					
Unit 1	Int Comb	Diesel	2.000	2.000	1971
<b>Virginia Dept of Public Utilities</b>					
Virginia Power Plant St. Louis County, MN					
Unit 5	Steam	Coal/Gas	8.300	8.300	1953
Unit 6	Steam	Coal/Gas	18.500	18.500	1971
<b>Wells Public Utilities</b>					
Wells Plant Fairbault County, MN					
Unit 1	Int Comb	Oil #2/Gas	1.400	1.400	1953
Unit 2	Int Comb	Oil #2/Gas	1.500	1.500	1957
Unit 3	Int Comb	Oil #2/Gas	1.000	1.000	1950
Unit 4	Int Comb	Oil #2/Gas	2.300	2.300	1966
Unit 5	Int Comb	Oil #2/Gas	2.200	2.200	1975

2007	Plant Profile				
			Capacity		
	Unit Type	Fuel Type	Summer (MW)	Winter (MW)	Year Installed
<b>Westbrook Public Utilities</b>					
Westbrook Plant Cottonwood County, MN					
Unit 4	Int Comb	Oil #2	0.700	0.700	1955
Unit 5	Int Comb	Oil #2	2.200	2.200	2001
<b>Willmar Municipal Utilities</b>					
Willmar Plant Kandiyohi County, MN					
Unit 2	Steam	Coal/Gas	7.000	7.000	1952
Unit 3	Steam	Coal/Gas	16.000	8.000	1959
Unit 4	Int Comb	Oil #2	12.000	12.000	2000
<b>Windom Municipal Utility</b>					
Windom Gas Turbine Cottonwood County, MN					
Unit 1	Gas Turbine	Oil #2	2.500	3.000	1980
Unit 2	Int Comb	Oil #2	1.700	1.800	2001
Unit 3	Int Comb	Oil #2	1.700	1.800	2001
Unit 4	Int Comb	Oil #2	1.700	1.800	2001
<b>Worthington Public Utilities</b>					
Worthington Diesel Generating Plant Nobles County, MN					
Unit 1	Int Comb	Diesel	14.000	14.000	2002
<b>Xcel Energy</b>					
Allen S. King Minnesota					
Unit 1	Steam	Coal/Wood/Gas	528.000	528.000	1968
Alliant Tech Systems Minnesota					
Unit 1 & 2	Int Comb	Oil #2	1.670	1.670	1993
Angus Anson South Dakota					
Unit 2	Gas Turbine	Gas/Oil #2	111.600	128.000	1994
Unit 3	Gas Turbine	Gas/Oil #2	114.500	128.000	1994
Unit 4	Gas Turbine	Gas/Oil #2	158.400	180.000	2005

2007	Plant Profile				
	Unit Type	Fuel Type	Capacity		Year Installed
			Summer (MW)	Winter (MW)	
<b>Xcel Energy, continued</b>					
Apple River Hydro Wisconsin					
Unit 1	Hydro	Water	0.970	0.970	1900
Unit 3	Hydro	Water	1.110	1.110	1900
Unit 4	Hydro	Water	1.110	1.110	1900
Bayfront Steam Wisconsin					
Unit 4	Steam	Wood/Coal/Gas	22.000	22.000	1948
Unit 5	Steam	Wood/Coal/Gas	22.000	22.000	1950
Unit 6	Steam	Wood/Coal/Gas	29.000	29.000	1956
Big Falls Hydroelectric Wisconsin					
Unit 1	Hydro	Water	2.500	2.500	1922
Unit 2	Hydro	Water	2.400	2.500	1922
Unit 3	Hydro	Water	2.490	2.490	1925
Black Dog Steam Minnesota					
Unit 2	Steam	Coal/Gas	102.800	105.800	1954
Unit 3	Steam	Coal/Gas	107.060	107.030	1955
Unit 4	Steam	Coal/Gas	175.000	175.000	1960
Unit 5	Gas Turbine	Gas	195.000	205.000	2002
Blue Lake Gas Turbine Minnesota					
Unit 1	Gas Turbine	Oil #2	41.470	55.570	1974
Unit 2	Gas Turbine	Oil #2	41.400	55.000	1974
Unit 3	Gas Turbine	Oil #2	39.400	55.000	1974
Unit 4	Gas Turbine	Oil #2	52.000	67.000	1974
Unit 7	Gas Turbine	Oil #2	158.830	163.770	2005
Unit 8	Gas Turbine	Oil #2	156.970	161.660	2005
Cedar Falls Hydro Wisconsin					
Unit 1	Hydro	Water	2.640	2.640	1910
Unit 2	Hydro	Water	2.280	2.280	1911
Unit 3	Hydro	Water	2.330	2.330	1915

2007	Plant Profile				
			Capacity		
	Unit Type	Fuel Type	Summer (MW)	Winter (MW)	Year Installed
<b>Xcel Energy, continued</b>					
Chippewa Falls Hydro Wisconsin					
Unit 1	Hydro	Water	3.790	3.790	1928
Unit 2	Hydro	Water	4.010	4.010	1928
Unit 3	Hydro	Water	3.890	3.890	1928
Unit 4	Hydro	Water	3.890	3.890	1928
Unit 5	Hydro	Water	3.880	3.880	1928
Unit 6	Hydro	Water	4.010	4.010	1928
Cornell Hydroelectric Wisconsin					
Unit 1	Hydro	Water	10.330	10.330	1976
Unit 2	Hydro	Water	10.690	10.690	1976
Unit 3	Hydro	Water	11.430	11.430	1976
Unit 4	Hydro	Water	0.730	0.730	1976
Dells Hydroelectric Wisconsin					
Unit 1	Hydro	Water	2.490	2.490	1923
Unit 2	Hydro	Water	1.340	1.340	1924
Unit 3	Hydro	Water	1.340	1.340	1930
Unit 4	Hydro	Water	1.340	1.340	1930
Unit 5	Hydro	Water	1.340	1.340	1930
Unit 6	Hydro	Water	0.740	0.740	1916
Unit 7	Hydro	Water	0.740	0.740	1907
Flambeau Wisconsin					
Unit 1	Gas Turbine	Gas/Oil #2	13.000	19.000	1969
French Island Gas Turbine Wisconsin					
Unit 3	Gas Turbine	Oil #2	73.530	94.830	1974
Unit 4	Gas Turbine	Oil #2	73.170	94.830	1974
French Island Steam Plant Wisconsin					
Unit 1	Steam	Wood/Gas/RDF	15.000	15.000	1969
Unit 2	Steam	Wood/Gas/RDF	14.000	15.000	1969



2007	Plant Profile				
	Unit Type	Fuel Type	Capacity		Year Installed
			Summer (MW)	Winter (MW)	
<b>Xcel Energy, continued</b>					
Granite City Gas Turbine Minnesota					
Unit 1	Gas Turbine	Gas/Oil #2	14.000	19.000	1969
Unit 2	Gas Turbine	Gas/Oil #2	15.000	19.000	1969
Unit 3	Gas Turbine	Gas/Oil #2	15.000	19.000	1969
Unit 4	Gas Turbine	Gas/Oil #2	15.000	19.000	1969
Hayward Hydroelectric Wisconsin					
Unit 1	Hydro	Water	0.200	0.200	1925
Hennepin Island Hydro Minnesota					
Unit 1	Hydro	Water	2.400	2.400	1954
Unit 2	Hydro	Water	2.340	2.340	1954
Unit 3	Hydro	Water	2.300	2.300	1954
Unit 4	Hydro	Water	2.300	2.300	1954
Unit 5	Hydro	Water	2.700	2.700	1955
High Bridge Steam Minnesota					
Unit 5	Steam	Coal/Gas	99.000	99.000	1956
Unit 6	Steam	Coal/Gas	172.100	172.100	1959
Holcombe Hydroelectric Wisconsin					
Unit 1	Hydro	Water	11.760	11.760	1950
Unit 2	Hydro	Water	11.750	11.750	1950
Unit 3	Hydro	Water	11.760	11.760	1950
Inver Hills Gas Turbine Minnesota					
Unit 1	Gas Turbine	Gas/Oil #2	58.500	71.000	1972
Unit 2	Gas Turbine	Gas/Oil #2	56.000	70.450	1972
Unit 3	Gas Turbine	Gas/Oil #2	58.000	70.400	1972
Unit 4	Gas Turbine	Gas/Oil #2	58.000	70.450	1972
Unit 5	Gas Turbine	Gas/Oil #2	58.530	70.430	1972
Unit 6	Gas Turbine	Gas/Oil #2	61.000	70.400	1972
Unit 7	Int Comb	Oil #1	1.830	1.830	1994
Unit 8	Int Comb	Oil #1	1.830	1.830	1994

2007	Plant Profile				
			Capacity		
	Unit Type	Fuel Type	Summer (MW)	Winter (MW)	Year Installed
<b>Xcel Energy, continued</b>					
Jim Falls Hydroelectric Wisconsin					
Unit 1	Hydro	Water	27.960	27.960	1988
Unit 2	Hydro	Water	28.260	28.260	1988
Unit 3	Hydro	Water	0.500	0.500	1986
Key City Gas Turbine Minnesota					
Unit 1	Gas Turbine	Gas/Oil #2	15.000	19.000	1969
Unit 3	Gas Turbine	Gas/Oil #2	15.000	19.000	1969
Unit 4	Gas Turbine	Gas/Oil #2	16.000	19.000	1969
Ladysmith Hydroelectric Wisconsin					
Unit 1	Hydro	Water	0.890	0.890	1940
Unit 2	Hydro	Water	0.860	0.860	1940
Unit 3	Hydro	Water	1.110	1.110	1983
Menomonie Hydro Wisconsin					
Unit 1	Hydro	Water	2.660	2.660	1958
Unit 2	Hydro	Water	2.720	2.720	1958
Monticello Nuclear Minnesota					
Unit 1	Nuclear	Uranium	572.000	595.350	1971
Prairie Island Nuclear Minnesota					
Unit 1	Nuclear	Uranium	551.000	551.000	1973
Unit 2	Nuclear	Uranium	545.000	547.000	1974
Red Wing Steam Minnesota					
Unit 1	Steam	RDF/Gas	10.000	10.000	1949
Unit 2	Steam	RDF/Gas	10.000	10.000	1949

2007	Plant Profile				
			Capacity		
	Unit Type	Fuel Type	Summer (MW)	Winter (MW)	Year Installed
<b>Xcel Energy, continued</b>					
Riverdale Hydroelectric Wisconsin					
Unit 1	Hydro	Water	0.330	0.330	1905
Unit 2	Hydro	Water	0.300	0.300	1905
Riverside Steam Minnesota					
Unit 7	Steam	Coal/Gas/Oil #2	144.250	144.250	1987
Unit 8	Steam	Coal/Oil #2	237.000	237.000	1964
Saxon Falls Hydro Wisconsin					
Unit 1	Hydro	Water	0.700	0.550	1913
Unit 2	Hydro	Water	0.800	0.650	1913
Sherburne County Steam (59% share of Unit 3) Minnesota					
Unit 1	Steam	Coal/Oil #2	697.000	697.000	1976
Unit 2	Steam	Coal/Oil #2	682.000	682.000	1977
Unit 3	Steam	Coal/Oil #2	503.860	503.860	1987
St. Croix Falls Hydro Wisconsin					
Unit 1	Hydro	Water	3.290	3.290	1905
Unit 2	Hydro	Water	2.990	2.990	1905
Unit 3	Hydro	Water	2.990	2.990	1905
Unit 4	Hydro	Water	2.990	2.990	1905
Unit 5	Hydro	Water	3.390	3.390	1910
Unit 6	Hydro	Water	3.290	3.290	1910
Unit 7	Hydro	Water	3.390	3.390	1923
Unit 8	Hydro	Water	3.190	3.190	1923
Superior Falls Hydro Michigan					
Unit 1	Hydro	Water	0.950	0.750	1917
Unit 2	Hydro	Water	0.900	0.700	1917
Thornapple Hydro Wisconsin					
Unit 1	Hydro	Water	0.810	0.810	1929
Unit 2	Hydro	Water	0.860	0.860	1929

2007	Plant Profile				
	Unit Type	Fuel Type	Capacity		Year Installed
			Summer (MW)	Winter (MW)	
<b>Xcel Energy, continued</b>					
Trego Hydroelectric Wisconsin					
Unit 1	Hydro	Water	0.880	0.880	1927
Unit 2	Hydro	Water	0.610	0.610	1927
United Health Care Minnesota					
Unit 1&2	Gas Turbine	Oil #2	3.660	3.660	1993
United Hospital Minnesota					
Unit 1	Gas Turbine	Oil #2	4.800	4.800	1992
West Faribault Jet Engine Minnesota					
Unit 2	Gas Turbine	Gas	15.930	19.930	1965
Unit 3	Gas Turbine	Gas	13.530	17.930	1965
Wheaton Wisconsin					
Unit 1	Gas Turbine	Oil #2/Gas	56.390	71.000	1973
Unit 2	Gas Turbine	Oil #2/Gas	64.990	71.400	1973
Unit 3	Gas Turbine	Oil #2/Gas	56.130	70.300	1973
Unit 4	Gas Turbine	Oil #2/Gas	55.810	70.300	1973
Unit 5	Gas Turbine	Oil #2/Gas	59.650	79.800	1973
Unit 6	Gas Turbine	Oil #2/Gas	60.270	79.800	1973
White River Hydroelectric Wisconsin					
Unit 1	Hydro	Water	0.420	0.300	1907
Unit 2	Hydro	Water	0.420	0.300	1907
Wilmarth Steam Minnesota					
Unit 1	Steam	RDF/Gas	9.000	9.000	1948
Unit 2	Steam	RDF/Gas	9.490	9.490	1951

2007	Plant Profile				
			Capacity		
	Unit Type	Fuel Type	Summer (MW)	Winter (MW)	Year Installed
<b>Xcel Energy, continued</b>					
Wissota Hydroelectric					
Wisconsin					
Unit 1	Hydro	Water	6.090	6.090	1917
Unit 2	Hydro	Water	6.220	6.220	1917
Unit 3	Hydro	Water	6.090	6.090	1917
Unit 4	Hydro	Water	6.090	6.090	1917
Unit 5	Hydro	Water	5.990	5.990	1917
Unit 6	Hydro	Water	6.090	6.090	1917

**Table 10: Net Generation and Fuel Consumption for Utility-Owned Electric Generating Plants Serving Minnesota**

2007	Fuel Used						
	Net MWh	Coal	Natural Gas^^	Fuel Oil #2**	Fuel Oil #6	Nuclear	Other***
	Generation*	(Tons)	(MCF)	(Gallons)	(Gallons)	(Mbtu)	(Tons)
<b>Adrian Public Utilities</b>							
Adrian Power Plant Nobles County, MN							
Unit 5	34			2,226			
<b>Alliant Energy-Interstate Power Company</b>							
Agency Street Gas Turbine Des Moines County, IA							
Unit 1	219		9,008	94			
Unit 2	350		14,396	151			
Unit 3	145		5,963	62			
Unit 4	186		7,651	80			
Ames Diesel Story County, IA							
Units 1 and 2	0			0			
Burlington Gas Turbine Des Moines County, IA							
Unit 1	770		17,873				
Unit 2	670		15,552				
Unit 3	850		19,730				
Unit 4	420		9,750				

2007	Fuel Used						
	Net MWh	Coal	Natural Gas^^	Fuel Oil #2**	Fuel Oil #6	Nuclear	Other***
	Generation*	(Tons)	(MCF)	(Gallons)	(Gallons)	(Mbtu)	(Tons)
<b>Alliant Energy-Interstate Power Company, continued</b>							
Burlington Steam Des Moines County, IA							
Unit 1	1,227,849	797,542	14,244				
Centerville Diesel Appanoose County, IA							
Units 1 - 3	-103			9,576			
Centerville Gas Turbine Appanoose County, IA							
Units 1 and 2	18,117			3,257,940			
Dubuque Internal Combustion Dubuque County, IA							
Unit 1	-38			2,520			
Unit 2	-38			1,596			
Dubuque Steam Dubuque County, IA							
Unit 2	327	7,123	14,441	546			
Unit 3	145,152	100,408	24,339	630			
Unit 4	167,206	116,068	19,519	1,092			
Emery Cerro Gordo County, IA							
Unit 1	512,078		5,854,378		40,824		
Unit 2	508,148		5,810,054		40,530		
Unit 3	626,095						

2007	Fuel Used						
	Net MWh	Coal	Natural Gas^^	Fuel Oil #2**	Fuel Oil #6	Nuclear	Other***
	Generation*	(Tons)	(MCF)	(Gallons)	(Gallons)	(Mbtu)	(Tons)
<b>Alliant Energy-Interstate Power Company, continued</b>							
Fox Lake Gas Turbine Martin County, MN							
Unit 1	-136						
Fox Lake Steam Martin County, MN							
Unit 1	3,234		15,765				
Unit 2	-423						
Unit 3	68,475		331,732		2,928,240		
Grinnell Gas Turbine Poweshiek County, IA							
Units 1 & 2	527		16,744				
Hills Internal Combustion Rock County, MN							
Unit 1	-87			840			
Unit 2	-97			378			
Lansing Internal Combustion Allamakee County, IA							
Unit 1	10			756			
Unit 2	10			840			



2007	Fuel Used						
	Net MWh	Coal	Natural Gas^^	Fuel Oil #2**	Fuel Oil #6	Nuclear	Other***
	Generation*	(Tons)	(MCF)	(Gallons)	(Gallons)	(Mbtu)	(Tons)
<b>Alliant Energy-Interstate Power Company, continued</b>							
Lansing Steam Allamakee County, IA							
Unit 1	-1,025						
Unit 2	477	244		1,932			
Unit 3	153,580	98,961		81,648			
Unit 4	1,468,411	965,578		181,104			
Lime Creek Cerro Gordo County, IA							
Unit 1	13,235			1,383,522			
Unit 2	20,159			2,042,124			
Louisa Station No. 1 (jointly owned) Louisa County, IA							
Unit 1	169,343	104,338	7,226				
M.L. Kapp Steam Clinton County, IA							
Unit 1	0						
Unit 2	1,053,750	726,461	12,540				
Marshalltown Gas Turbine Marshall County, IA							
Unit 1	27,090			2,692,788			
Unit 2	2,647			263,130			
Unit 3	24,885			2,473,632			

2007	Fuel Used						
	Net MWh	Coal	Natural Gas^^	Fuel Oil #2**	Fuel Oil #6	Nuclear	Other***
	Generation*	(Tons)	(MCF)	(Gallons)	(Gallons)	(Mbtu)	(Tons)
<b>Alliant Energy-Interstate Power Company, continued</b>							
Montgomery Gas Turbine LeSueur County, MN							
Unit 1	2,594			393,750			
Neal No. 3 Woodbury County, IA							
Unit 1	1,132,864	682,069	16,556				
Neal No. 4 (jointly owned) Woodbury County, IA							
Unit 4	1,288,381	783,890		116,844			
Ottumwa Generating Station Wappello County, IA							
Unit 1	1,879,467	1,216,746		540,834			
Prairie Creek Linn County, IA							
Unit 1A	63,802	64,101	9,083	1,050			
Unit 2	512	64,927	73	0			
Unit 3	91,463	93,892	13,021	1,512			
Unit 4	677,993	320,149	96,519	11,172			154,895
Red Cedar Linn County, IA							
Unit 1	5,501		76,359				

2007	Fuel Used						
	Net MWh	Coal	Natural Gas^^	Fuel Oil #2**	Fuel Oil #6	Nuclear	Other***
	Generation*	(Tons)	(MCF)	(Gallons)	(Gallons)	(Mbtu)	(Tons)
<b>Alliant Energy-Interstate Power Company, continued</b>							
Sixth Street Station Linn County, IA							
Unit 2	5,724	6,796	40,255				
Unit 4	18,416	21,865	129,512				
Unit 7	40,492	48,076	284,767				
Unit 8	28,132	33,401	197,843				
Sutherland Station Marshall County, IA							
Unit 1	210,724	157,210	37,140				
Unit 2	210,572	164,147	37,114				
Unit 3	582,702	305,306	102,702				
<b>Austin Utilities</b>							
Downtown Plant Mower County, MN							
Units 1 – 5	5,345		91,479				
Northeast Plant Mower County, MN							
Unit 1	73,300	39,476	73,405				
<b>Benson Municipal Utilities</b>							
Benson Municipal Utilities Swift County, MN							
Units 5 - 11	238			15,321			

2007	Fuel Used						
	Net MWh	Coal	Natural Gas^^	Fuel Oil #2**	Fuel Oil #6	Nuclear	Other***
	Generation*	(Tons)	(MCF)	(Gallons)	(Gallons)	(Mbtu)	(Tons)
<b>Blooming Prairie Public Utilities</b>							
Blooming Prairie Power Plant Steele County, MN							
Unit 2	45			3,452			
Unit 3	1			72			
Unit 4	3			234			
Unit 5	196			13,610			
<b>Blue Earth Lt &amp; Water Dept</b>							
Blue Earth City Plant Faribault County, MN							
Unit 1	16			1,234			
Unit 3	71			5,376			
Unit 4	70			4,727			
Unit 5	71			4,801			
Unit 6	48			3,310			

2007	Fuel Used						
	Net MWh	Coal	Natural Gas^^	Fuel Oil #2**	Fuel Oil #6	Nuclear	Other***
	Generation*	(Tons)	(MCF)	(Gallons)	(Gallons)	(Mbtu)	(Tons)
<b>Dairyland Power Cooperative</b>							
Alma Station Buffalo County, WI							
Unit 1	93,193	56,188		68,810			
Unit 2	95,520	57,590		12,500			
Unit 3	91,931	55,427		6,930			
Unit 4	308,603	152,814		59,620			
Unit 5	486,905	229,719		61,110			
Elk Mound Combustion Turbine Rusk County, WI							
Unit 1	13,121		169,093	10,930			
Unit 2	16,025		197,892	7,890			
Five Star Dairy Dunn County, WI							
Unit 1	4,913		not reported				
Flambeau Hydroelectric Rusk County, WI							
Unit 1	19,012						
Unit 2	1,926						
Unit 3	12,312						
Genoa 3 Vernon County, WI							
Unit 1	2,250,081	1,082,668		683,795			

2007	Fuel Used						
	Net MWh	Coal	Natural Gas^^	Fuel Oil #2**	Fuel Oil #6	Nuclear	Other***
	Generation*	(Tons)	(MCF)	(Gallons)	(Gallons)	(Mbtu)	(Tons)
<b>Dairyland Power Cooperative, cont.</b>							
JP Madgett Buffalo County, WI							
Unit 1	2,483,789	1,467,351		191,909			
Norswiss Dairy Barron County, WI							
Unit 1	3,841		not reported				
Onyx Seven Mile Landfill Eau Claire County, WI							
Unit 1	3,844		98,175				
Unit 2	5,302		131,322				
Unit 3	5,480		137,638				
Wild Rose Dairy Vernon County, WI							
Unit 1	1,989		not reported				
<b>Delano Municipal Utilities</b>							
Delano Municipal Plant Wright County, MN							
Units 1 - 9	115			10,945			

2007	Fuel Used						
	Net MWh	Coal	Natural Gas^^	Fuel Oil #2**	Fuel Oil #6	Nuclear	Other***
	Generation*	(Tons)	(MCF)	(Gallons)	(Gallons)	(Mbtu)	(Tons)
<b>East Grand Forks Water and Light Dept</b>							
Distribution Service Center Polk County, MN							
Unit 1	14			2,656			
Water Treatment Plant Polk County, MN							
Unit 1	15			1,056			
<b>Elk River Municipal Utilities</b>							
Elk River Mun. Diesel Plant Sherburne County, MN							
Unit 1	1			100			
Unit 2	1			115			
Unit 3	36		5	2,611			
Unit 4	76			5,474			
<b>Fairfax Municipal</b>							
Fairfax Municipal Power Plant Renville County, MN							
Unit 2A	2			160			
<b>Fairmont Public Utilities</b>							
Fairmont Power Plant Martin County, MN							
Units 3 & 4	1,103		19,192				
Units 6 & 7	2,706		24,729	23,427			

2007	Fuel Used						
	Net MWh	Coal	Natural Gas^^	Fuel Oil #2**	Fuel Oil #6	Nuclear	Other***
	Generation*	(Tons)	(MCF)	(Gallons)	(Gallons)	(Mbtu)	(Tons)
<b>Glencoe Light and Power Commission</b>							
Glencoe Municipal Electric Plant McLeod County, MN							
Units 5 - 14	457		55	30,192			
<b>Grand Marais Public Utilities</b>							
Grand Marais Power Plant Cook County, MN							
Unit 1	136			11,458			
Unit 2	85			9,000			
Unit 3	85			9,000			
<b>Granite Falls, City of</b>							
Granite Falls Municipal Hydroelectric Yellow Medicine County, MN							
Units 1 - 3	3,597						
Granite Falls Municipal Diesel Yellow Medicine County, MN							
Unit 1	14			1,080			
Unit 2	19			1,420			
Unit 3	19			1,420			
<b>Great River Energy</b>							
Cambridge Gas Turbine Plant Isanti County, MN							
Unit 1	1,049			18,860			
Unit 2	72,018		861,384				



2007	Fuel Used						
	Net MWh	Coal	Natural Gas^^	Fuel Oil #2**	Fuel Oil #6	Nuclear	Other***
	Generation*	(Tons)	(MCF)	(Gallons)	(Gallons)	(Mbtu)	(Tons)
<b>Great River Energy, cont.</b>							
Coal Creek Station McLean County, ND							
Units 1 and 2	8,575,702	7,720,721			360,734		
Elk River Station Sherburne County, MN							
Units 1 - 3	160,968		120,353	1102			273,814
Lakefield Junction Martin County, MN							
Unit 1	36,627		460,681	11,201			
Unit 2	59,063		736,607	11,967			
Unit 3	61,558		760,784	28,681			
Unit 4	79,147		984,497	20,848			
Unit 5	73,923		937,416	12,858			
Unit 6	86,487		1,094,973	20,303			
Maple Lake Wright County, MN							
Unit 1	190			26,000			
Pleasant Valley Station Mower County, MN							
Unit 11	154,360		1,521,981	2,369,061			
Unit 12	84,502		995,273	1,302,599			
Unit 13	31,534		399,460	780,318			

2007	Net MWh Generation*	Fuel Used					
		Coal	Natural Gas^^	Fuel Oil #2**	Fuel Oil #6	Nuclear	Other***
		(Tons)	(MCF)	(Gallons)	(Gallons)	(Mbtu)	(Tons)
<b>Great River Energy, continued</b>							
Rock Lake Pine County, MN Unit 1	308			35,000			
St. Bonifacious Power Plant Carver County, MN Unit 1	1,281			140,000			
Stanton Station Mercer County, ND Unit 1	1,455,226	820,388		95,000			
<b>Halstad Municipal Utilities</b>							
Halstad Diesel Plant Norman County, MN Unit 1	3			250			
Unit 2	3			250			
<b>Hastings Public Utilities Commission</b>							
Hastings Hydro Facility Dakota County, MN Unit 1	12,395						
Unit 2	12,612						
<b>Hawley Public Utilities</b>							
Hawley Plant Clay County, MN Units 1 - 5	3			540			

2007	Fuel Used						
	Net MWh	Coal	Natural Gas^^	Fuel Oil #2**	Fuel Oil #6	Nuclear	Other***
	Generation*	(Tons)	(MCF)	(Gallons)	(Gallons)	(Mbtu)	(Tons)
<b>Hibbing Public Utilities Commission</b>							
Hibbing Public Utilities Plant St. Louis County, MN							
Unit 3	60,733	60,486					
Unit 5	64,715	64,510					
Unit 6	825	755					
<b>Hutchinson Utilities Commission</b>							
Hutchinson Mun. Plant No. 1 McLeod County, MN							
Unit 2	14			1,179			
Unit 3	218		1,572	4,128			
Unit 4	202		1,092	8,078			
Unit 5	0			158			
Unit 6	0			39			
Unit 7	123		688	4,098			
Unit 8	30		689				
Hutchinson Mun. Plant No. 2 McLeod County, MN							
Unit 1G	15,160		171,199				
Unit 1S	1,635						
Unit 9	2,283		35,649				

2007	Fuel Used						
	Net MWh	Coal	Natural Gas^^	Fuel Oil #2**	Fuel Oil #6	Nuclear	Other***
	Generation*	(Tons)	(MCF)	(Gallons)	(Gallons)	(Mbtu)	(Tons)
<b>Janesville Municipal Utility</b>							
Janesville Municipal Plant Waseca County, MN							
Unit 1	1		1,103	390			
Unit 2	1		5,237	1,850			
Unit 3	1		1,079	380			
Unit 4	2			5,450			
<b>Kenyon Municipal Utilities</b>							
Kenyon Municipal Plant Goodhue County, MN							
Unit 5	11			870			
Unit 6	23			1,820			
Unit 7	27			2,150			
<b>Lake Crystal Municipal Utilities</b>							
Lake Crystal Plant Blue Earth County, MN							
Unit 1	2			130			
Unit 3	22		1	1,400			
Unit 4	13			871			
Unit 5	24			1,600			
<b>Lakefield, City of</b>							
Lakefield Power Plant Jackson County, MN							
Unit 5	6			509			
Unit 6	10			627			

2007	Fuel Used						
	Net MWh	Coal	Natural Gas^^	Fuel Oil #2**	Fuel Oil #6	Nuclear	Other***
	Generation*	(Tons)	(MCF)	(Gallons)	(Gallons)	(Mbtu)	(Tons)
<b>Lanesboro Public Utilities</b>							
Lanesboro Power Plant - Diesel Fillmore County, MN							
Unit 4	3			301			
Unit 5	94			7,389			
Lanesboro Power Plant - Hydro Fillmore County, MN							
Unit 1	23						
<b>Litchfield Public Utilities</b>							
Litchfield Power Plant Meeker County, MN							
Unit 1	280		1,891	6,861			
Unit 2	280		1,890	6,842			
<b>Madelia Municipal Light &amp; Power</b>							
Madelia Municipal Plant Watsonwan County, MN							
Unit 1	4			209			
Unit 2	2			146			
Unit 3	1			49			
Unit 4	5			292			

2007	Fuel Used						
	Net MWh	Coal	Natural Gas^^	Fuel Oil #2**	Fuel Oil #6	Nuclear	Other***
	Generation*	(Tons)	(MCF)	(Gallons)	(Gallons)	(Mbtu)	(Tons)
<b>Marshall Municipal Utilities</b>							
Marshal Power Plant Lyon County, MN							
Unit 6	212			22,965			
<b>Melrose Public Utilities</b>							
Melrose Power Plant Stearns County, MN							
Unit 1	8			600			
Unit 2	11			980			
Unit 3	34			2,647			
Unit 4	34			1,081			
<b>Minnesota Power</b>							
Blanchard Hydroelectric Station Morrison County, MN							
Unit 1	23,744						
Unit 2	23,732						
Unit 3	24,098						
Boswell EC (79% share Unit 4) Itasca County, MN							
Unit 1	493,385	298,265		35,726			
Unit 2	428,081	247,274		32,001			
Unit 3	2,271,522	1,335,111		211,304			
Unit 4	3,522,887	2,162,319		545,712			

2007	Fuel Used						
	Net MWh	Coal	Natural Gas^^	Fuel Oil #2**	Fuel Oil #6	Nuclear	Other***
	Generation*	(Tons)	(MCF)	(Gallons)	(Gallons)	(Mbtu)	(Tons)
<b>Minnesota Power, continued</b>							
Fond Du Lac Hydro Station St. Louis County, MN							
Unit 1	40,504						
Knife Falls Hydro Station Carlton County, MN							
Unit 1	4,287						
Unit 2	2,727						
Unit 3	2,978						
Laskin EC St. Louis County, MN							
Unit 1	280,770	188,281		5,912			
Unit 2	311,028	208,572		6,550			
Little Falls Hydro Station Morrison County, MN							
Unit 1	5,663						
Unit 2	5,574						
Unit 3	6,583						
Unit 4	7,182						
Unit 6	184						
M.L. Hibbard Steam Station St. Louis County, MN							
Unit 3	51,912	32,684	40,530				17,929
Unit 4	1,802	6,684					5,407

2007	Fuel Used						
	Net MWh	Coal	Natural Gas^^	Fuel Oil #2**	Fuel Oil #6	Nuclear	Other***
	Generation*	(Tons)	(MCF)	(Gallons)	(Gallons)	(Mbtu)	(Tons)
<b>Minnesota Power, continued</b>							
Pillager Hydro Station Cass County, MN							
Unit 1	3,315						
Unit 2	3,844						
Prairie River Hydro Station Itasca County, MN							
Unit 1	691						
Unit 2	1						
Rapids Energy Center Itasca County, MN							
Unit 4	2,455						
Unit 5	2,068						
Unit 6	39,410	11,979	19,523				60,058
Unit 7	94,205	7,714					42,840
Sappi Cloquet Turbine Generator 5 Carlton County, MN							
Unit 5	113,160		231,978				25,775
Scanlon Hydro Station Carlton County, MN							
Unit 1	1,654						
Unit 2	1,513						
Unit 3	1,529						
Unit 4	1,620						



2007	Net MWh Generation*	Fuel Used					
		Coal (Tons)	Natural Gas^^ (MCF)	Fuel Oil #2** (Gallons)	Fuel Oil #6 (Gallons)	Nuclear (Mbtu)	Other*** (Tons)
<b>Minnesota Power, continued</b>							
Sylvan Hydro Station Cass County, MN							
Unit 1	3,079						
Unit 2	3,442						
Unit 3	1,945						
Taconite Harbor Cook County, MN							
Unit 1	507,204	317,842		39,438			
Unit 2	460,133	283,122		50,437			
Unit 3	524,119	326,862		34,937			
Thomson Hydro Station Carlton County, MN							
Unit 1	42,598						
Unit 2	28,690						
Unit 3	36,138						
Unit 4	39,158						
Unit 5	38,326						
Unit 6	50,137						
Winton Hydro Station Lake County, MN							
Unit 2	8,814						
Unit 3	11,305						

2007	Fuel Used						
	Net MWh	Coal	Natural Gas^^	Fuel Oil #2**	Fuel Oil #6	Nuclear	Other***
	Generation*	(Tons)	(MCF)	(Gallons)	(Gallons)	(Mbtu)	(Tons)
<b>Minnkota Power Cooperative, Inc.</b>							
Coyote Station (30% share) Mercer County, ND							
Unit 1	3,008,041	2,469,912		787,247			
Grand Forks Diesel Plant Grand Forks County, ND							
Unit 1	6,596			501			
Unit 2	6,887			522			
Unit 3	5,529			447			
Unit 4	10,961			833			
Unit 5	3,589			286			
Unit 6	6,014			477			
Unit 7	20,758			1,375			
Unit 8	8,924			697			
Unit 9	5,335			513			
Unit 10	9,312			717			
Unit 11	9,409			741			
Harwood Diesel Plant Cass County, ND							
Unit 2	8,633			761			
Unit 3	10,185			872			
Infinity Wind Petersburg Grand Forks County, ND							
Unit 1	3,130						

2007	Fuel Used						
	Net MWh	Coal	Natural Gas^^	Fuel Oil #2**	Fuel Oil #6	Nuclear	Other***
	Generation*	(Tons)	(MCF)	(Gallons)	(Gallons)	(Mbtu)	(Tons)
<b>Minnkota Power Cooperative, Inc., continued</b>							
Infinity Wind Valley City Grand Forks County, ND							
Unit 1	2,913						
Milton R. Young (40% share Unit 2) Oliver County, ND							
Unit 1	1,962,400	1,661,561		414,517			
Unit 2	2,547,671	2,182,323		824,415			
<b>Moorhead Public Service</b>							
Moorhead Power Plant Clay County, MN							
Unit 6	34			4,733			
Unit 8 - wind	1,317						
Unit 9 - wind	1,355						
<b>Moose Lake Water &amp; Light Commission</b>							
Moose Lake Muni Plant Carlton County, MN							
Unit 1	4			375			
Unit 2	7			440			
Unit 3	17			1,100			
Unit 4	2			250			
Unit 1 South	11			823			
Unit 2 South	11			960			

2007	Fuel Used						
	Net MWh	Coal	Natural Gas^^	Fuel Oil #2**	Fuel Oil #6	Nuclear	Other***
	Generation*	(Tons)	(MCF)	(Gallons)	(Gallons)	(Mbtu)	(Tons)
<b>Mora Municipal Utilities</b>							
Mora Municipal Plant Kanabec County, MN							
Unit 2	135		3,367^^^	5,308			
Unit 5	446			14,220			
Unit 6	457			24,006			
<b>New Prague Utilities Commission</b>							
New Prague Power Plant Scott County, MN							
Unit 1	17			1,281			
Unit 2	722		4,149	18,197			
Unit 3	389		2,810	9,589			
Unit 4	509		3,494	13,274			
Unit 5	57		876				
Unit 6	959		5,787	21,830			
<b>New Ulm Public Utilities</b>							
New Ulm Gas Turbine Plant Brown County, MN							
Unit 5	678			71,893			
Unit 7	174			18,838			
New Ulm Steam Plant Brown County, MN							
Unit 4	2,657		37,203				
Unit 6	146		2,635				

2007	Fuel Used						
	Net MWh	Coal	Natural Gas^^	Fuel Oil #2**	Fuel Oil #6	Nuclear	Other***
	Generation*	(Tons)	(MCF)	(Gallons)	(Gallons)	(Mbtu)	(Tons)
<b>North Branch Water &amp; Light</b>							
North Branch Power Plant Chisago County, MN							
Unit 1	26		354	1,182			
Unit 2	49		318	2,647			
Unit 3	176			12,484			
Unit 4	153			9,363			
<b>Otter Tail Power Company</b>							
Bemidji Hydroelectric Beltrami County, MN							
Unit 1	694						
Unit 2	256						
Big Stone Plant (54% share ) Grant County, SD							
Unit 1	1,318,471	812,849		140,636			416
Coyote Station (35% share) Mercer County, ND							
Unit 1	1,032,449	845,379		268,682			
Dayton Hollow Hydroelectric Otter Tail County, MN							
Unit 1	4,052						
Unit 2	2,974						

2007	Fuel Used						
	Net MWh	Coal	Natural Gas^^	Fuel Oil #2**	Fuel Oil #6	Nuclear	Other***
	Generation*	(Tons)	(MCF)	(Gallons)	(Gallons)	(Mbtu)	(Tons)
<b>Otter Tail Power Company, continued</b>							
Fergus Control Center Otter Tail County, MN							
Unit 1	22			1,170			
Hoot Lake Hydroelectric Otter Tail County, MN							
Unit 1	1,821						
Hoot Lake Steam Plant Otter Tail County, MN							
Unit 1	-467						
Unit 2	396,290	244,678		5,522			
Unit 3	559,505	345,401		36,797			
Jamestown Turbine Plant Stutsman County, ND							
Unit 1	2,405			258,860			
Unit 2	1,816			201,919			
Lake Preston Turbine Kingsbury County, SK							
Unit 1	1,080			91,913			
Pisgah Hydroelectric Otter Tail County, MN							
Unit 1	3,894						
Potlatch Cogeneration Beltrami County, MN							
Unit 1	0						not reported

2007	Fuel Used						
	Net MWh	Coal	Natural Gas^^	Fuel Oil #2**	Fuel Oil #6	Nuclear	Other***
	Generation*	(Tons)	(MCF)	(Gallons)	(Gallons)	(Mbtu)	(Tons)
<b>Otter Tail Power Company, continued</b>							
Solway Beltrami County, MN							
Unit 1	53,816		641,808	11,297			
Taplin Gorge Hydroelectric Otter Tail County, MN							
Unit 1	3,671						
Wright Hydroelectric Otter Tail County, MN							
Unit 1	2,462						
<b>Preston Public Utilities</b>							
Preston Power Plant Fillmore County, MN							
Unit 4 & 5	2			11,548			
Unit 6	2		1,732	5,301			
<b>Princeton Public Utilities</b>							
Princeton Power Plant Mille Lacs County, MN							
Unit 3	288			20,880			
Unit 4	157			11,010			
Unit 5	123			7,890			
Unit 6	334			23,530			
Unit 7	575			39,610			

2007	Fuel Used						
	Net MWh	Coal	Natural Gas^^	Fuel Oil #2**	Fuel Oil #6	Nuclear	Other***
	Generation*	(Tons)	(MCF)	(Gallons)	(Gallons)	(Mbtu)	(Tons)
<b>Redwood Falls Public Utilities</b>							
Redwood Falls Hydro Plant Redwood County, MN							
Unit 1A	1,885						
Unit 7	266		1,436	5,660			
Southside Substation Redwood County, MN							
Units 2 - 5	466			33,750			
<b>Rochester Public Utilities</b>							
Cascade Creek Olmsted County, MN							
Unit 1	0		70,233				
Unit 2	64,660		672,129		11,227		
Lake Zumbro Hydroelectric Wabasha County, MN							
Unit 1	7,160						
Unit 2	8,422						
Silver Lake Steam Plant Olmsted County, MN							
Unit 1	7,290	3,803	21,827				
Unit 2	18,869	9,537	30,764				
Unit 3	80,931	56,570	115,814				
Unit 4	205,837	101,378	126,941				



2007	Fuel Used						
	Net MWh	Coal	Natural Gas^^	Fuel Oil #2**	Fuel Oil #6	Nuclear	Other***
	Generation*	(Tons)	(MCF)	(Gallons)	(Gallons)	(Mbtu)	(Tons)
<b>St. Charles Light and Water</b>							
St. Charles Power Plant Winona County, MN							
Unit 1	110			8,060			
Unit 2	108			7,890			
Unit 3	108			7,870			
Unit 4	110			7,980			
<b>St. James Municipal Light &amp; Power</b>							
Diesel Generation Plant Watsonwan County, MN							
Unit 1	23			1,520			
Unit 2	21			1,389			
Unit 3	22			1,497			
Unit 4	13			850			
Unit 5	13			874			
Unit 6	8			574			
<b>Sleepy Eye Public Utility</b>							
Sleepy Eye Power Plant Brown County, MN							
Units 1 - 5	75			5,526			

2007	Fuel Used						
	Net MWh	Coal	Natural Gas^^	Fuel Oil #2**	Fuel Oil #6	Nuclear	Other***
	Generation*	(Tons)	(MCF)	(Gallons)	(Gallons)	(Mbtu)	(Tons)
<b>Southern Minnesota Municipal Power Agency</b>							
Fairmont Wind Farm Martin County, MN							
Units 1 - 4	11,305						
Owatonna Downtown Steele County, MN							
Units 5, 6 & 7	14,780		147,260				
Redwood Falls Wind Farm Redwood County, MN							
Units 1 & 2	11,420						
St. Peter Nicollet County, MN							
Units 1 - 6	1,327			114,744			
Sherburne Steam Plant (41% share) Sherburne County, MN							
Unit 3	2,827,161	1,651,350					
Wells Faribault County, MN							
Units 1 - 5	715		5,920	8,904			

2007	Fuel Used						
	Net MWh	Coal	Natural Gas^^	Fuel Oil #2**	Fuel Oil #6	Nuclear	Other***
	Generation*	(Tons)	(MCF)	(Gallons)	(Gallons)	(Mbtu)	(Tons)
<b>Spring Valley Public Utilities Commission</b>							
Spring Valley Plant Fillmore County, MN							
Unit 2	131		2,902	4,836			
Unit 3	242		39,463	11,659			
<b>Steele Waseca Cooperative Electric</b>							
Windmills Steele County, MN							
Unit 3	32						
Unit 4	58						
Unit 5	61						
Unit 6	39						
Unit 7	20						
Unit 8	36						
Unit 9	34						
Unit 10	71						
Unit 11	70						

2007	Fuel Used						
	Net MWh	Coal	Natural Gas^^	Fuel Oil #2**	Fuel Oil #6	Nuclear	Other***
	Generation*	(Tons)	(MCF)	(Gallons)	(Gallons)	(Mbtu)	(Tons)
<b>Thief River Falls Mun Utilities</b>							
Thief River Falls Hydro Plant Pennington County, MN							
Unit 1	601						
Unit 2	1,015						
Municipal Power Plant Pennington County, MN							
Unit 1	4			334			
Unit 2	4			282			
Unit 3	3			180			
Unit 4	6			613			
<b>Two Harbors, City of</b>							
Two Harbors Plant Lake County, MN							
Unit 1	111		372	5,435			
<b>Virginia Dept of Pub Utilities</b>							
Virginia Power Plant St. Louis County, MN							
Units 5 & 6	22,838	106,076	118,564				55,748
<b>Westbrook Public Utilities</b>							
Westbrook Plant Cottonwood County, MN							
Unit 5	11			930			

2007	Fuel Used						
	Net MWh	Coal	Natural Gas^^	Fuel Oil #2**	Fuel Oil #6	Nuclear	Other***
	Generation*	(Tons)	(MCF)	(Gallons)	(Gallons)	(Mbtu)	(Tons)
<b>Willmar Municipal Utilities</b>							
Willmar Plant Kandiyohi County, MN							
Unit 2	35		744				
Unit 3	45,977	45,732	36,101				
Unit 4	222			15,986			
<b>Windom Municipal Utility</b>							
Windom Gas Turbine Cottonwood County, MN							
Unit 1	8			1,200			
Unit 2	61			4,139			
Unit 3	55			3,689			
Unit 4	58			4,013			
<b>Worthington Public Utilities</b>							
Worthington Diesel Generating Plant Nobles County, MN							
Unit 1	200			14,073			

2007	Fuel Used						
	Net MWh	Coal	Nat Gas^^	Fuel Oil #2**	Fuel Oil #6	Nuclear	Other***
	Generation*	(Tons)	(MCF)	(Gallons)	(Gallons)	(Mbtu)	(Tons)
<b>Xcel Energy</b>							
Allen S. King Washington County, MN							
Unit 1	729,913	459,445	31,545				
Alliant Tech Systems Hennepin County, MN							
Units 1 & 2	-72			152			
Angus Anson Minnehaha County, SD							
Units 2 - 4	278,087		2,963,169	4,588,260			
Apple River Hydroelectric St. Croix County, WI							
Units 1 - 4	10,669						
Bayfront Steam Ashland County, WI							
Units 4 - 6	366,618	143,454	440,628				216,175
Big Falls Hydroelectric Rusk County, WI							
Units 1 - 3	23,188						
Black Dog Steam Dakota County, MN							
Unit 2	200,553						
Unit 3	473,382	313,707	51,809				
Unit 4	1,007,912	620,309	53,397				
Unit 5	467,678		5,265,102				

2007	Fuel Used						
	Net MWh	Coal	Nat Gas^^	Fuel Oil #2**	Fuel Oil #6	Nuclear	Other***
	Generation*	(Tons)	(MCF)	(Gallons)	(Gallons)	(Mbtu)	(Tons)
<b>Xcel Energy, continued</b>							
Blue Lake Gas Turbine Scott County, MN							
Units 1 - 4, 7 & 8	139,399		1,263,647	2,619,785			
Cedar Falls Hydroelectric Dunn County, WI							
Units 1 - 3	26,035						
Chippewa Falls Hydro Chippewa County, WI							
Units 1 - 6	41,629						
Cornell Hydroelectric Chippewa County, WI							
Units 1 - 4	54,528						
Dells Hydroelectric Eau Claire County, WI							
Units 2 - 7	14,561						
Flambeau Price County, WI							
Unit 1	803		19,650	2,810			
French Island Gas Turbine La Crosse County, WI							
Units 3 & 4	14,279			1,850,953			
French Island Steam Plant La Crosse County, WI							
Units 1 & 2	69,944		2,697				108,417
Units 3 & 4	14,535			1,733,713			

2007	Fuel Used						
	Net MWh	Coal	Nat Gas^^	Fuel Oil #2**	Fuel Oil #6	Nuclear	Other***
	Generation*	(Tons)	(MCF)	(Gallons)	(Gallons)	(Mbtu)	(Tons)
<b>Xcel Energy, continued</b>							
Granite City Gas Turbine Sherburne County, MN							
Units 1 - 4	3,174		16,584	287,038			
Hayward Hydroelectric Sawyer County, WI							
Unit 1	1,333						
Hennepin Island Hydro Hennepin County, MN							
Units 1 - 5	53,085						
High Bridge Steam Ramsey County, MN							
Unit 5	225,786	153,454	19,203				
Unit 6	518,584	312,075	42,854				
Holcombe Hydroelectric Chippewa County, WI							
Units 1 - 3	58,998						
Inver Hills Gas Turbine Dakota County, MN							
Units 1 - 6	131,184		1,918,158	3,230,340			
Jim Falls Hydroelectric Chippewa County, WI							
Units 1 & 2	66,376						
Unit 3	2,294						



2007	Fuel Used						
	Net MWh	Coal	Natural Gas^^	Fuel Oil #2**	Fuel Oil #6	Nuclear	Other***
	Generation*	(Tons)	(MCF)	(Gallons)	(Gallons)	(Mbtu)	(Tons)
<b>Xcel Energy, continued</b>							
Key City Gas Turbine Blue Earth County, MN							
Units 1 - 4	3,211		70,040				
Ladysmith Hydroelectric Rusk County, WI							
Units 1 - 3	7,098						
Menomonie Hydro Dunn County, WI							
Units 1 & 2	17,724						
Monticello Nuclear Wright County, MN							
Unit 1	4,192,269					not reported	
Prairie Island Nuclear Goodhue County, MN							
Unit 1	4,425,524					not reported	
Unit 2	4,463,762					not reported	
Red Wing Steam Goodhue County, MN							
Units 1 & 2	103,965		33,135				180,374

2007	Fuel Used						
	Net MWh	Coal	Natural Gas^^	Fuel Oil #2**	Fuel Oil #6	Nuclear	Other***
	Generation*	(Tons)	(MCF)	(Gallons)	(Gallons)	(Mbtu)	(Tons)
<b>Xcel Energy, continued</b>							
Riverdale Hydroelectric St. Croix County, WI							
Units 1 & 2	1,829						
Riverside Steam Hennepin County, MN							
Unit 7	85,2285	557,838	13,760				
Unit 8	1,329,328	678,657		54,968			
Saxon Falls Hydroelectric Jackson County, WI							
Units 1 & 2	8,712						
Sherburne Cnty Steam Sherburne County, MN							
Unit 1	3,879,590	2,372,604		299,808			
Unit 2	5,091,550	3,059,597		112,395			
Unit 3	4,071,162	2,376,429		192,949			
St. Croix Falls Hydroelectric Polk County, WI							
Units 1 - 8	92,459						
Superior Falls Hydroelectric Gogebic County, MI							
Units 1 & 2	9,695						

2007	Fuel Used						
	Net MWh	Coal	Natural Gas^^	Fuel Oil #2**	Fuel Oil #6	Nuclear	Other***
	Generation*	(Tons)	(MCF)	(Gallons)	(Gallons)	(Mbtu)	(Tons)
<b>Xcel Energy, continued</b>							
Thornapple Hydroelectric Rusk County, WI							
Units 1 & 2	5,730						
Trego Hydroelectric Washburn County, WI							
Units 1 & 2	6,061						
United Health Care Hennepin County, MN							
Units 1 & 2	-62			23,58			
United Hospital Ramsey County, MN							
Units 1 - 3	-173			3,374			
West Faribault Jet Engine Rice County, MN							
Units 2 & 3	-98		0				
Wheaton Chippewa County, WI							
Units 1 - 6	107,959		1,457,860	3,760,296			
White River Hydroelectric Ashland County, WI							
Units 1 & 2	3,725						

2007	Fuel Used						
	Net MWh	Coal	Nat Gas^^	Fuel Oil #2**	Fuel Oil #6	Nuclear	Other***
	Generation*	(Tons)	(MCF)	(Gallons)	(Gallons)	(Mbtu)	(Tons)
<b>Xcel Energy, continued</b>							
Wilmarth Steam Blue Earth County, MN							
Unit 1	55,144		13,578				96,560
Unit 2	58,663		14,334				100,062
Wissota Hydroelectric Chippewa County, WI							
Units 1 - 6	88,912						
<b>PUBLIC UTILITY TOTALS</b>	87,411,533	45,734,692	39,722,298	41,771,828	3,381,555	not reported	1,183,574

Notes for Table 10

\* Net generation values of zero indicate less than one MWh of production; however, values are included in the Public Utility Total. Negative net generation values indicate that the station electric consumption exceeded the gross generation of the plant. However, these plants did produce positive amounts of energy during the year.

\*\* Fuel Oil #2 includes Diesel Fuel.

\*\*\* "Other" fuels include wood, wood by-products, tire- and refuse-derived fuel.

^^ Natural gas includes small amount of methane gas.

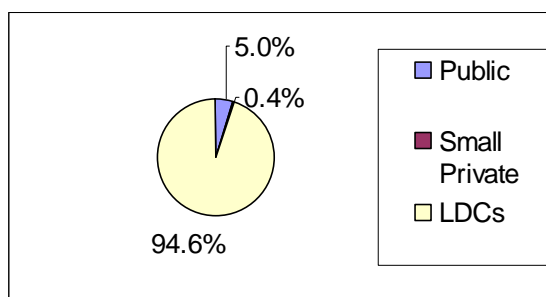
^^^ Total for all units.

## Section II: Natural Gas Utilities

### Overview

Natural gas companies in Minnesota are owned both privately and publicly. These distribution companies deliver gas to customers, regardless of whether the utility or a third party<sup>1</sup> purchases the gas for the customer. The Minnesota Public Utilities Commission regulates the rates of large privately-owned local distribution companies (LDCs). The Commission generally does not regulate rates of publicly-owned utilities. The Commission also does not regulate rates of privately-owned companies that are smaller than legislatively set limits. As Figure 3 below shows, LDCs distribute most of Minnesota's natural gas.

**Figure 3: Natural Gas Throughput Reported by Type of Utility<sup>2</sup>**



In 2007 there were seven investor-owned local distribution companies serving customers in Minnesota. There were five small privately-owned and 29 municipal gas utilities serving Minnesota customers.

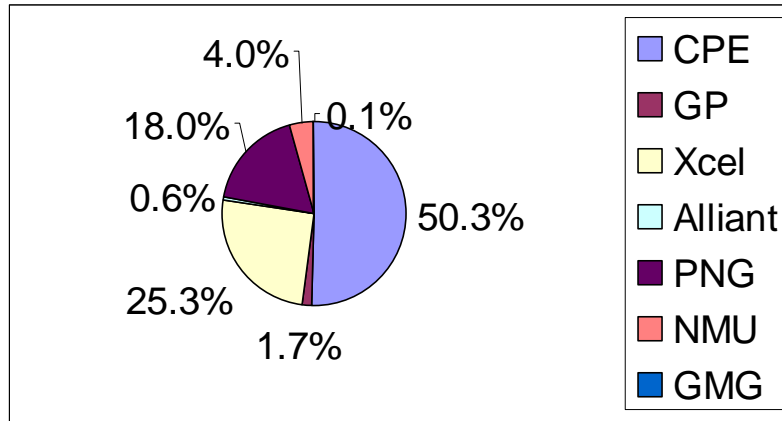
---

<sup>1</sup> Certain customers can purchase natural gas supplies from companies that are not regulated by state authorities. However, these customers must still transport the gas through their state-regulated local natural gas companies.

<sup>2</sup> See Table 13 for consumption by company.

As Figure 4 shows, CenterPoint Energy is the largest investor-owned utility, followed by Xcel Energy and Minnesota Energy Resources Corp-PNG. The investor-owned company with the smallest Minnesota consumption in 2007 was Greater Minnesota Gas Inc.

**Figure 4: Natural Gas Consumption Reported by Investor-Owned Utilities**



### Investor-Owned Natural Gas Companies<sup>3</sup>

- CPE:** CenterPoint Energy
- GP:** Great Plains Natural Gas Co.
- Xcel:** Xcel Energy
- Alliant:** Interstate Power & Light Company
- NMU:** Minnesota Energy Resources Corp.-Northern Minnesota Utilities
- PNG:** Minnesota Energy Resources Corp.-Peoples Natural Gas
- GMG:** Greater Minnesota Gas Inc.

<sup>3</sup> See Table 13 for consumption by company.

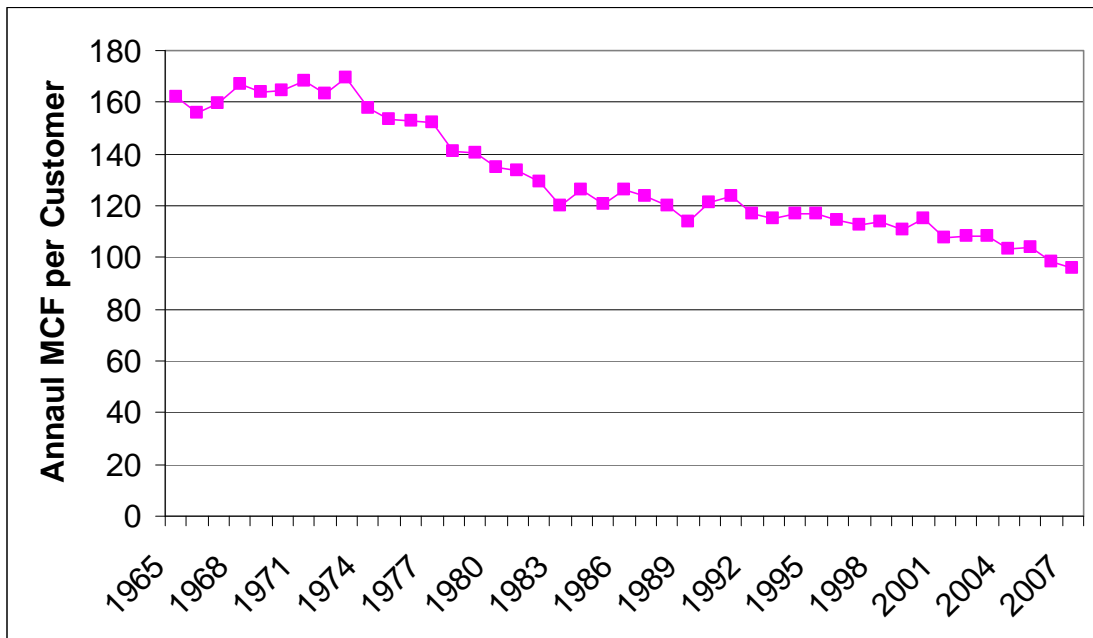
## Introduction to Natural Gas Tables

The tables in this section provide both aggregate and individual company information reported by natural gas companies serving Minnesota. Tables 11 and 12 provide overall natural gas consumption and numbers of natural gas customers in Minnesota.

Tables 13 and 14 provide natural gas consumption and numbers of natural gas customers reported by each natural gas company serving Minnesota in 2007. Table 15 provides revenues reported by the natural gas companies.

Table 11 indicates that 2007 consumption of natural gas in the residential sector was 7.2 percent higher than 2006 consumption. As Figure 5 below indicates, residential consumption of natural gas on a weather-normalized basis has declined since 1973.

**Figure 5: Weather-Normalized Natural Gas Use Per Residential Customer**



**Table 11: Total Minnesota Historical Natural Gas Consumption**

Minnesota Natural Gas Consumption (1,000 MCF)

Year	Residential	Commercial	Industrial*	Company Use	Unaccounted For	Deliveries to Transportation^	Total
1965	87,309	52,121	107,914	952	524	0	248,821
1966	87,586	51,739	124,548	1,027	898	0	265,798
1967	89,671	61,014	130,519	1,076	1,002	0	283,282
1968	91,597	63,783	149,646	1,228	845	0	307,098
1969	97,181	69,359	147,976	1,218	726	0	316,460
1970	102,625	74,096	149,782	1,099	1,040	0	328,642
1971	103,291	74,081	155,428	1,195	1,009	0	335,004
1972	112,303	79,578	140,631	1,247	1,007	0	334,765
1973	98,547	80,111	159,942	1,396	256	0	340,253
1974	102,861	79,637	143,553	1,333	625	0	328,009
1975	104,377	78,752	121,772	1,158	122	0	306,181
1976	106,415	74,651	103,545	2,657	765	0	288,033
1977	101,361	72,167	84,873	225	158	0	258,784
1978	106,238	77,378	86,263	335	1,488	0	271,701
1979	111,917	79,599	95,839	570	(1,227)	0	286,699
1980	103,208	80,845	90,551	342	1,650	0	276,596
1981	95,969	77,263	84,288	304	58	0	257,882
1982	107,478	83,208	64,473	463	(1,957)	0	253,664
1983	97,359	79,025	59,101	231	3,746	0	239,470
1984	101,868	82,770	64,584	258	(587)	0	248,893
1985	106,870	85,273	63,096	213	1,515	0	256,967
1986	103,139	80,382	52,364	238	(3,278)	0	232,846
1987	89,919	70,581	51,064	275	19	11,736	223,594
1988	108,423	85,462	41,344	284	1,060	32,916	269,489



Table 11, continued: Minnesota Natural Gas Consumption (1,000 MCF)

Year	Residential	Commercial	Industrial*	Company Use	Unaccounted For	Deliveries to Transportation^	Total
1989	112,496	84,155	41,804	275	965	40,567	280,262
1990	106,894	85,978	44,635	217	(2,790)	48,843	283,777
1991	117,229	86,312	39,586	223	2,098	59,221	304,668
1992	113,160	83,255	36,977	430	3,260	57,086	294,169
1993	124,114	85,505	43,331	225	2,288	51,129	306,592
1994	121,450	80,888	42,452	335	1,014	59,177	305,317
1995	128,458	86,473	37,945	257	1,860	76,072	331,065
1996	142,268	94,824	44,429	333	1,938	61,007	344,799
1997	129,182	96,089	42,294	305	1,054	64,380	333,304
1998	110,934	84,596	43,837	194	1,673	63,934	305,168
1999	118,941	90,294	42,454	344	2,001	64,457	318,490
2000	128,327	95,888	41,314	142	2,441	64,273	332,385
2001	125,984	95,662	37,915	159	2,691	51,024	313,435
2002	134,665	98,443	36,122	148	356	65,162	334,896
2003	137,622	97,539	39,080	201	1,062	58,626	334,130
2004	132,909	93,936	33,026	201	2,068	62,404	324,545
2005	128,883	92,825	41,751	168	2,752	62,576	328,956
2006**	119,125	85,914	35,518	181	5,268	70,756	316,850
2007**	129,208	80,311	48,168	195	4,421	77,259	339,562

Notes for Table 11

\* Industrial data includes natural gas sold to produce electricity.

^ Some natural gas customers can purchase gas supplies from unregulated natural gas suppliers and transport this gas through regulated utilities' systems.

\*\* Figures for some categories may not equal the corresponding figures in Table 13 due to reporting discrepancies.

**Table 12: Number of Minnesota Natural Gas Customers**

Year	Residential Firm	Commercial Firm*	Commercial Interruptible*	Industrial Firm*	Industrial Interruptible*	Total
1965	513,568	40,432	3,324	709	725	558,758
1966	529,405	42,649	3,540	728	797	577,119
1967	546,115	45,352	3,799	758	932	596,956
1968	563,641	47,825	4,047	795	1,022	617,330
1969	577,380	49,670	4,179	818	1,044	633,091
1970	591,584	51,649	4,300	825	1,085	649,443
1971	603,357	53,230	4,418	838	1,137	662,980
1972	615,681	55,198	4,487	849	1,167	677,382
1973	631,314	56,701	4,670	861	1,210	694,756
1974	653,376	59,660	4,796	882	1,262	719,976
1975	666,996	60,972	4,789	967	1,270	734,994
1976	678,811	61,993	4,895	953	1,231	747,883
1977	691,089	62,778	4,910	929	1,249	760,955
1978	710,498	64,665	4,874	867	1,160	782,064
1979	732,503	66,974	4,556	855	1,224	806,112
1980	767,457	70,997	4,283	881	1,209	844,827
1981	785,008	73,204	4,168	972	1,136	864,488
1982	792,088	75,016	3,529	1,012	1,011	872,656
1983	803,542	76,605	3,374	979	881	885,381
1984	822,509	79,032	3,371	1,098	950	906,960
1985	841,760	82,256	3,417	1,072	983	929,488
1986	860,695	85,063	3,581	1,023	800	951,162
1987	884,476	86,887	3,523	1,036	823	976,745
1988	904,515	88,675	3,452	1,067	783	998,492
1989	935,252	91,628	3,371	1,085	788	1,032,124
1990	962,006	94,214	3,264	1,088	797	1,061,369
1991	979,426	95,641	3,263	1,072	702	1,080,104
1992	1,008,912	97,810	3,272	1,118	749	1,111,861
1993	1,034,433	98,917	3,174	1,074	526	1,138,124
1994	1,060,692	100,952	3,359	987	667	1,166,657
1995	1,091,477	102,097	3,343	814	672	1,198,403
1996	1,124,739	105,158	3,471	842	773	1,234,983
1997	1,151,421	107,223	3,422	772	753	1,263,591
1998	1,176,228	109,220	3,718	610	832	1,290,612
1999	1,201,349	115,901	3,875	473	986	1,340,315
2000	1,238,679	114,271	3,917	659	898	1,358,424
2001	1,263,214	116,640	3,951	693	853	1,385,351
2002	1,293,734	119,032	3,974	697	785	1,418,222
2003	1,323,721	120,598	3,882	729	809	1,449,739
2004	1,354,242	122,898	3,823	741	815	1,482,519
2005	1,378,515	123,659	3,903	746	770	1,507,593
2006	1,402,701	126,056	3,808	703	783	1,534,051
2007	1,410,202	115,193	3,287	12,396	1,218	1,542,296

Note for Table 12

\*Sales and transportation customers are combined.

**Table 13: Minnesota Natural Gas Consumption by Company**

Minnesota Natural Gas Consumption (MCF) by Company in 2007

2007	Residential	Commercial	Industrial	Company Use	Unaccounted For	Deliveries to Transportation Customers	Electric Generation	Total
Alliant Energy	872,927	589,157	290,902	881	204,177	6,261,156	0	8,219,200
Argyle, City of	14,290	12,584	0	0	0	0	0	26,874
Austin Utilities	1,117,070	276,692	*	14,186	77,707	0	*	2,314,323
Bagley Public Utilities	19,855	44,694	0	0	0	0	0	64,549
CenterPoint Energy	68,393,322	51,864,558	10,538,587	95,580	1,964,013	25,186,065	3,577,438	161,619,563
Circle Pines Utility dba Centennial Utilities	229,188	159,255	0	0	1,371	0	0	389,814
Cohasset, City of	116,727	17,331	43,737	0	0	0	0	177,795
Community Utilities Co. Inc.	63,722	27,909	8,035	0	0	0	0	99,666
Duluth Dept of Public Works & Utilities	2,517,100	1,399,797	627,718	0	32,138	257,662	0	4,834,415
Eagle Bend/Clarissa	30,825	68,330	0	0	0	0	0	99,155
Fairfax Municipal Utility	42,197	12,179	5,567	0	0	287,584	0	347,527
Fosston Municipal Utilities	18,623	20,804	159,293	0	0	0	0	198,720
Goodhue PUC	33,008	23,479	0	0	0	0	0	56,487
Great Plains Nat Gas Co	1,415,612	1,601,846	1,031,778	0	0	1,284,356	0	5,333,592
Greater Minnesota Gas, Inc.	251,246	26,940	51,530	0	0	20,509	0	350,225
Hallock, City of	48,198	17,341	0	1,146	0	0	0	66,685
Hawley Public Utilities	36,857	33,700	0	0	298	0	0	70,855
Henning Municipal Gas	14,451	26,004	0	0	0	0	0	40,455
Hibbing PUC	360,502	*	0	0	31,408	0	*	675,158
Hutchinson Util Comm	442,775	388,222	769,433	11,569	(27,184)	0	329,592	1,914,407
Lake Park Public Utilities	20,900	13,048	0	0	0	0	0	33,948

Table 13, continued: Minnesota Natural Gas Consumption (MCF) by Company in 2007

<b>2007</b>	<b>Residential</b>	<b>Commercial</b>	<b>Industrial</b>	<b>Company Use</b>	<b>Unaccounted For</b>	<b>Deliveries to Transportation Customers</b>	<b>Electric Generation</b>	<b>Total</b>
MN Energy Resources-NMU	3,078,007	305,350	3,215,833	4,807	0	6,261,156	0	12,865,153
MN Energy Resources-PNG	12,969,090	580,392	8,865,630	8,843	0	35,459,963	0	57,883,918
Morgan Natural Gas Srvices	14,266	*	*	0	0	0	0	26,135
New Ulm Public Utilities	400,459	171,404	*	14,056	0	262,271	*	1,167,769
New York Mills Mun Gas	32,634	44,370	0	0	1,014	0	0	78,018
NW Gas of Cass County	12,887	18,720	36,674	0	0	0	0	68,281
NW Natural Gas LLC	108,862	39,079	31,629	0	0	0	0	179,570
NW Nat Gas of Murray County, Inc	40,061	33,885	23,505	0	0	0	0	97,4551
Owatonna Public Utilities	814,974	574,310	736,149	5,464	25,446	0	5,464	2,161,807
Perham, City of	180,767	158,780	725,877	0	0	0	0	1,065,424
Randall Municipal Gas	17,871	*	*	0	0	0	0	30,729
Round Lake, City of	11,967	6,875	7,280	0	472	0	0	26,594
Sheehan's Gas Co Inc	77,283	*	*	0	0	726,670	0	844,191
Stephen Municipal Gas	18,738	10,064	0	0	3,427	0	0	32,229
Two Harbors Mun Gas	146,991	97,477	163,635	13,125	0	0	0	421,228
Tyler, City of	35,160	8,351	0	0	0	0	0	43,511
Virginia Public Utilities	139,077	*	0	0	200	0	*	480,084
Warren, City of	44,381	50,047	0	0	0	0	0	94,428
Westbrook Public Utilities	33,161	0	0	0	0	0	0	33,161
Xcel Energy	34,971,677	21,021,812	13,385,324	25,417	2,088,532	7,447,267	2,266,428	81,206,456
<b>TOTAL</b>	<b>129,207,707</b>	<b>80,311,434</b>	<b>41,705,054</b>	<b>195,074</b>	<b>4,403,019</b>	<b>83,454,659</b>	<b>6,462,603</b>	<b>345,739,550</b>

Notes for Table 13

\* Withheld to avoid disclosure of individual company information. Data included in totals.

**Table 14: Minnesota Natural Gas Customers by Company**

<b>2007</b>	<b>Residential Firm</b>	<b>Commercial Firm*</b>	<b>Commercial Interruptible*</b>	<b>Industrial Firm*</b>	<b>Industrial Interruptible*</b>	<b>Electric Generation*</b>	<b>Total</b>
Alliant Energy	9,353	1,184	40	10	11	-	10,598
Argyle, City of	202	38	-	-	-	-	240
Austin Utilities	10,355	65	21	1	3	1	10,446
Bagley Public Utilities	367	105	-	-	-	-	472
CenterPoint Energy	726,018	63,102	2,541	225	320	20	792,226
Circle Pines Utility dba Centennial Utilities	2,826	181	3	-	-	-	3,010
Cohasset, City of	642	37	-	5	-	-	684
Community Utilities Co. Inc.	690	83	-	8	-	-	781
Duluth Dept of Public Works & Utilities	23,747	1,871	75	21	10	-	25,724
Eagle Bend/Clarissa	458	91	-	-	-	-	549
Fairfax Municipal Utility	493	61	-	4	-	-	558
Fosston Municipal Utilities	364	84	-	3	-	-	451
Goodhue PUC	437	17	-	-	-	-	454
Great Plains Nat Gas Co	18,024	2,590	138	-	11	-	20,763
Greater Minnesota Gas, Inc.	3,140	235	-	12	25	-	3,412
Hallock, City of	420	10	-	-	-	-	430
Hawley Public Utilities	510	88	-	-	-	-	598
Henning Municipal Gas	355	58	-	-	-	-	413
Hibbing PUC	3,378	382	14	-	-	1	3,775
Hutchinson Utilities Commission	4,719	513	-	3	-	2	5,237
Lake Park Pub Utilities	279	55	-	-	-	-	334

Table 14, continued: Minnesota Natural Gas Customers by Company in 2007

<b>2007</b>	<b>Residential Firm</b>	<b>Commercial Firm*</b>	<b>Commercial Interruptible*</b>	<b>Industrial Firm*</b>	<b>Industrial Interruptible*</b>	<b>Electric Generation*</b>	<b>Total</b>
MN Energy Resources-NMU	34,387	2,300	-	3,094	149	-	39,930
MN Energy Resources-PNG	151,232	6,809	-	8,788	446	-	167,275
Morgan Natural Gas Services	260	25	-	1	-	-	286
New Ulm Public Utilities	5,454	563	29	16	-	1	6,063
New York Mills Municipal Gas	454	70	-	-	-	-	524
Northwest Gas of Cass County	203	80	-	10	-	-	293
NW Natural Gas LLC	1,507	160	-	-	23	-	1,690
NW Natural Gas of Murray County, Inc.	682	87	-	-	13	-	782
Owatonna Pub Utilities	9,230	772	-	-	59	9	10,070
Perham, City of	2,448	355	-	1	23	-	2,827
Randall Municipal Gas	247	34	1	1	-	-	283
Round Lake, City of	157	27	1	4	1	-	190
Sheehan's Gas Co Inc	946	150	-	1	-	-	1,097
Stephen Municipal Gas	204	53	-	-	-	-	257
Two Harbors Municipal Gas	1,462	198	6	29	-	-	1,659
Tyler, City of	341	59	-	-	-	-	400
Virginia Public Utilities	1,440	331	1	-	-	1	1,773
Warren, City of	610	-	-	-	-	-	610
Westbrook Public Utilities	298	-	-	-	-	-	298
Xcel Energy	391,863	32,270	417	124	119	5	424,798
<b>TOTAL</b>	<b>1,402,701</b>	<b>126,056</b>	<b>3,808</b>	<b>703</b>	<b>741</b>	<b>42</b>	<b>1,534,051</b>

Notes for Table 14

\* Sales and transportation customers are combined.

**Table 15: Minnesota Natural Gas Revenue by Company**

<b>2007</b>	<b>Residential</b>	<b>Commercial Firm</b>	<b>Commercial Interruptible</b>	<b>Industrial Firm^^</b>	<b>Industrial Interruptible</b>	<b>Total</b>
Alliant Energy	\$9,547,502	\$4,204,854	\$1,394,838	\$162,525	\$2,080,255	\$17,389,974
Argyle, City of	\$236,471	\$183,145	\$0	\$0	\$0	\$419,617
Austin Utilities	\$13,364,030	\$1,022,454	\$2,169,837	\$1,014,275	\$3,349,842	\$20,920,438
Bagley Public Utilities	\$229,595	\$459,467	\$0	\$0	\$0	\$689,062
CenterPoint Energy	\$773,765,124	\$343,333,281	\$176,049,244	\$6,421,235	\$113,095,926	\$1,412,664,810
Circle Pines Utility dba Centennial Utilities	\$2,601,946	\$861,654	\$581,099	\$0	\$0	\$4,044,699
Cohasset, City of	\$405,543	\$85,586	\$0	\$162,549	\$0	\$653,678
Community Utilities Co. Inc.	\$859,579	\$369,189	\$0	\$95,226	\$0	\$1,323,994
Duluth Dept of Public Works & Utilities	\$26,898,298	\$10,921,378	\$2,675,645	\$1,143,932	\$4,172,147	\$45,811,400
Eagle Bend/Clarissa	\$354,295	\$624,154	\$0	\$0	\$0	\$978,449
Fairfax Municipal Utility	\$530,300	\$144,188	\$0	\$93,223	\$0	\$767,711
Fosston Municipal Util	\$220,073	\$221,165	\$0	\$1,396,500	\$0	\$1,837,738
Goodhue PUC	\$445,250	\$322,422	\$0	\$0	\$0	\$767,672
Great Plains Nat Gas Co	\$15,912,827	\$9,546,920	\$5,410,243	\$0	\$7,245,395	\$38,115,385
Greater Minnesota Gas, Inc.	\$3,037,699	\$326,503	\$0	\$268,478	\$227,541	\$3,860,221
Hallock, City of	\$624,219	\$182,265	\$0	\$0	\$0	\$806,484
Hawley Public Utilities	\$508,071	\$427,981	\$0	\$0	\$0	\$936,052
Henning Municipal Gas	\$196,011	\$288,171	\$0	\$0	\$0	\$484,182
Hibbing PUC	\$3,898,938	\$2,991,695	\$113,814	\$0	\$0	\$7,004,447
Hutchinson Utilities Comm.	\$4,272,280	\$3,584,280	\$0	\$5,984,283	\$0	\$13,840,843
Lake Park Pub Utilities	\$284,728	\$164,494	\$0	\$0	\$0	\$449,222

Table 15, continued: Minnesota Natural Gas Revenue by Company in 2007

<b>2007</b>	<b>Residential</b>	<b>Commercial Firm</b>	<b>Commercial Interruptible</b>	<b>Industrial Firm^^</b>	<b>Industrial Interruptible</b>	<b>TOTAL</b>
MN Energy Resources Corp-NMU	\$33,022,409	\$3,297,903	\$0	\$21,659,210	\$9,408,132	\$67,387,654
MN Energy Resources Corp-PNG	\$132,255,165	\$6,142,894	\$0	\$65,077,095	\$17,900,637	\$221,375,791
Morgan Natural Gas Srvc	\$197,666	*	\$0	*	\$0	\$344,706
New Ulm Public Utilities	\$4,993,337	\$1,988,214	*	\$2,942,954	*	\$10,111,072
New York Mills Mun Gas	\$537,579	\$573,713	\$0	\$0	\$0	\$1,011,292
NW Gas of Cass County	\$160,890	\$214,814	\$0	\$328,931	\$0	\$704,635
NW Natural Gas LLC	\$1,388,910	\$450,837	\$303,748	\$0	\$0	\$2,143,495
NW Nat Gas of Murray County, Inc.	\$528,025	\$392,260	\$242,745	\$0	\$0	\$1,163,030
Owatonna Public Utilities	\$8,255,597	\$6,517,225	\$0	\$0	\$12,999,913	\$27,772,735
Perham, City of	\$1,757,403	*	\$0	*	\$5,213,969	\$8,641,623
Randall Municipal Gas	\$202,596	\$86,347	*	*	\$0	\$326,064
Round Lake, City of	\$124,620	\$37,470	*	\$12,659	*	\$263,362
Sheehans Gas Co Inc**	\$779,787	*	\$203,158	*	\$0	\$1,430,292
Stephen Municipal Gas	\$253,264	\$128,299	\$0	\$0	\$0	\$381,563
Two Harbors Municipal Gas	\$1,606,098	\$580,738	\$429,700	\$1,455,741	\$0	\$4,072,277
Tyler, City of^^						\$465,101
Virginia Public Utilities	\$1,753,121	*	*	\$0	\$0	\$4,312,893
Warren, City of	\$598,055	\$617,955	\$0	\$0	\$0	\$1,216,010
Westbrook Public Utilities	\$453,979	\$0	\$0	\$0	\$0	\$453,979
Xcel Energy**	\$380,902,159	\$173,381,520	\$26,726,869	\$22,569,196	\$75,576,871	\$680,946,838
<b>TOTAL</b>	<b>\$1,427,963,439</b>	<b>\$578,584,292</b>	<b>\$216,694,161</b>	<b>\$131,286,308</b>	<b>\$251,486,966</b>	<b>\$2,608,290,490</b>

Notes for Table 15

^ Includes natural gas sales and transportation.

^^ May include electric generation.

\* Withheld to avoid disclosure of individual company information. Data included in totals.

\*\* Sales revenue from transportation customers by customer class not reported.

^^^2007 data not provided by customer class.





## Section III: Attachments

### ***General Notes on Data***

1) **Consumption.** In general, electric companies report retail electric consumption as follows:

Farm. Electricity supplied to farm households and for agricultural purposes.

Residential. Electricity supplied to non-farm private households.

Commercial. Electricity supplied to small commercial and industrial power accounts. May include use by some apartment dwellers.

Industrial. Electricity supplied to large commercial and industrial power accounts, including mining accounts.

2) **Missing Data.** Although all utilities are required to report data used in this report annually, some utilities have provided either partial information or no information. In some places, this report notes where these utilities have not reported information. In other places, for the general purpose of comparing 2006 data to previous years' data, this report shows the most recent comparable data for non-reporting companies.

3) **Accuracy of Data.** While the Department does not audit the records supporting the data companies provide, we do check the reasonableness of the data. We also correct errors in reported data where feasible. However, some data reported by smaller companies may contain a few errors or inconsistencies. These errors should not significantly affect the totals.

## ***Glossary of Terms and Abbreviations***

**Btu:** British thermal unit; the amount of heat required to raise the temperature of one pound of water one degree Fahrenheit under stated conditions of pressure and temperature (equal to 252 calories, 778 foot-pounds, 1,005 joules and 0.293 watt-hours). It is the U.S. customary unit of measuring the quality of heat, such as the heat content of fuel.

**cf:** cubic foot; the U.S. customary unit of measurement of gas volume. It is the amount of gas required to fill a volume of one cubic foot under stated conditions of temperature, pressure and water vapor. One cubic foot of natural gas equals 1,000 British thermal units under standard conditions of atmosphere (one) and temperature (60 degrees Fahrenheit).

**Ccf:** one hundred cubic feet.

**Cooperative utility:** a utility owned and operated by its members.

**Department of DOC:** the Minnesota Department of Commerce.

**Gas turbine:** a type of electric generation plant that relies on turbines driven by the combustion of natural gas or diesel fuel to produce electricity.

**GWh:** gigawat-hour; the unit of energy equal to that expended in one hour at a rate of one billion watts. One GWh equals 1,000 megawatt-hours.

**Hydro:** a type of electric generation plant that relies on a water wheel to convert falling water into electricity.

**Int. comb. (Internal Combustion):** a type of electric generation unit that relies on an internal combustion engine to convert burned diesel, fuel oil, gasoline, or natural gas into electricity.

**Investor-owned utility (IOU):** Common term for an electric privately-owned utility regulated by the Minnesota Public Utilities Commission.

**kW:** one kilowatt or one thousand watts.

**Local Distribution Company (LDC):** Common term for a gas privately-owned utility regulated by the MPUC.

**Mcf:** one thousand cubic feet; a unit of measure of gas volume.

**Minnesota Public Utilities Commission (Commission):** the state agency with regulatory jurisdiction over certain Minnesota utilities.

**MWh:** megawatt-hour; the unit of energy equal to that expended in one hour at a rate of one million watts. One MWh equals 3,414,000 Btus.

**Natural Gas (gas):** a mixture of hydrocarbon compounds and small quantities of various non-hydrocarbons existing in the gaseous phase or in solution with crude oil in natural underground reservoirs. It comes from the ground with or without crude oil and is generally much higher in heat content than manufactured gas.

**Net generation:** the total amount of electric energy produced by a generating unit less the electricity consumed by the generating station.

**Nuclear:** a type of electric generation plant that uses energy obtained by fission, fusion or by radioactive decay to drive the turbines.

**Number 2 fuel oil:** a distillate fuel oil used for domestic heating and in moderate capacity commercial or industrial burners as well as for generating electricity.

**Number 6 fuel oil:** a residual fuel oil that is heavier than distillate fuel oil and is used to generate electricity as well as in industrial burners.

**Plant capacity:** the amount of electric load, measured in megawatts or kilowatts, for which a generating unit is rated either by the user or the manufacturer.

**Privately-owned utilities:** utility corporations owned by shareholders. Large privately-owned utilities are regulated by the Minnesota Public Utilities Commission.

**Publicly-owned utilities:** utilities owned, operated and regulated by the city or legal entity in which it resides.

**REIS:** Regional Energy Information System; the Minnesota Department of Commerce's computerized state energy data collection and information system. It includes energy data the DOC collects directly from energy suppliers as well as data collected by other state departments such as the Minnesota Department of Revenue, Petroleum Tax Division.

**RDF:** refuse-derived fuel, composed of garbage, that is used in some electric generation plants.

**Steam:** a type of electric generation plant that relies on steam-driven turbines to generate electricity. Steam is produced in a boiler heated by several combinations of fossil, refuse-derived, or wood-waste fuels.

**Transportation (of natural gas):** the action taken by a retail customer who purchases natural gas supplies directly from a supplier or marketer and then moves or transports the gas through a utility's distribution system to the customer's destination.

**Watt:** the unit of measure for electric power or rate of doing work. The rate of energy transfer equivalent to one ampere flowing under pressure of one volt.

**Weather-normalized information:** information adjusted to remove fluctuation due to changes in weather.

**Wind:** a type of electric generation plant that uses turbines powered by wind to generate electricity.