

Agency Purpose

The mission of the Perpich Center for Arts Education’s (PCAE) is to provide all Minnesota students the opportunity to develop and integrate their artistic and academic abilities to their highest potential. This mission is accomplished through three primary programs: Professional Development and Research that serves Minnesota K-12 schools; a statewide public Arts High School for 11th and 12th grade students; and a statewide Library & Learning Resource Center with books and materials for use by teachers, artists, students and the general public.

At a Glance

For the academic school year 2009-2010:

Professional Development and Research (PDR)

- Provided professional development opportunities, standards education and curriculum development support for 13,000 teachers/administrators in 85 school districts, impacting 220,000 K-12 students.
- Collaborated and/or provided assistance to 75% of MINNESOTA colleges with programs for teacher preparation, providing material on K-12 graduation standards, arts education curriculum development and needs of teachers in school environments.
- Continued development for all schools of curricular materials that focus on arts and culture of Native American and other ethnic groups.
- Designed and currently implementing a major pilot project to integrate arts education throughout the curriculum in MINNESOTA schools to improve teaching, boost achievement, reduce student absenteeism and provide equity in education for all students.
- Developed and will spearhead the first Minnesota Arts Education Survey that will provide comprehensive data for decision-makers on the depth and status of arts education in schools.

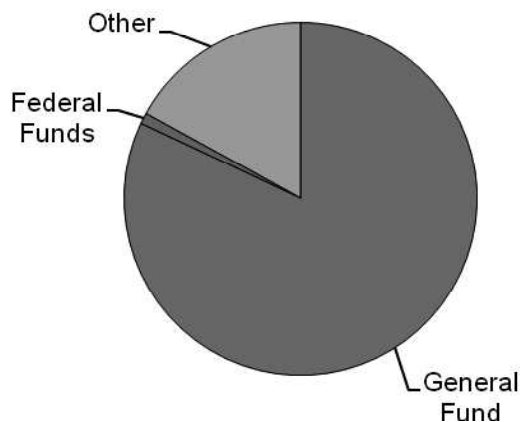
Arts High School

- Accepted 286 students, representing schools in every congressional district of Minnesota; 158 rural students were able to reside on campus; more than half of AHS students qualified for free/reduced financial aid.
- 99% of the AHS students graduated, amassing over \$4 million in college scholarships.
- Academic and arts teachers developed curricular materials on integrated arts education for online learning or distribution to other Minnesota teachers.

Library & Learning Resource Center

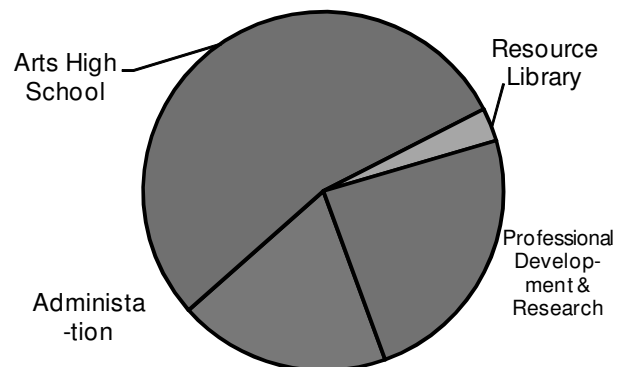
- Provided services for more than 260 teachers, teaching artists, college students and specialists working in arts education.
- Assisted 2400 students across Minnesota with research, education or special interest projects.
- Continue to expand service and holdings through relationships with state, university, Hennepin County and other library services

Est. FY 2010-11 Expenditures by Fund



Source: Consolidated Fund Statement.

Est. FY 2010-11 Expenditures by Program



Source: Agency Internal Spreadsheet

Strategies

The strategies utilized by the Perpich Center to accomplish the agency mission include:

1. Monitoring and responding to environmental factors that affect student learning, including changing demographics, state and school district economic conditions, student achievement, economic disparity, alternative licensure, teacher preparedness, equity and accessibility to arts education, changing family structures and local arts communities.
2. Strengthening relationships with partners, particularly community organizations and institutions of higher education, in order to expand resources and training opportunities for teachers.
3. Designing innovative, realistic and responsive programs to support teaching and learning in schools.
4. Producing, through integrated arts education, creative problem solvers, strategic thinkers, inventors, ethical leaders and exceptional humanitarians for the 21st Century workforce.

Operations

Directly or indirectly, the Perpich Center serves Minnesota's 823,000 students; 340 school districts; 233,920 licensed teachers and teaching artists; and the Arts High School students and their parents. The Perpich Center works collaboratively with arts organizations and community leaders as well as colleges/universities that have teacher-training programs. The hub of the Perpich Center is a 33-acre campus in Golden Valley that includes three buildings: one that houses the Library and the Arts High School; a dormitory for outstate students, and a facility for the Professional Development & Research staff. Perpich education specialists conduct outreach services and programs for professional development of K-12 teachers throughout the state.

The Leadership Team

Having strong central administration is key to the agency's ability to deliver quality, cost-effective programs throughout Minnesota. Emphasis has been placed on enhancing administrative divisions within the agency: Finance, Human Resources, Communications, Technology, School Administration, Policy, Professional Development, Facilities and Maintenance, and Security. In conjunction with the *State Code of Ethics*, managers foster an environment of collaboration, mutual trust and respect, good stewardship, accountability, and impeccable customer service.

Professional Development and Research

The professional employees of PDR are responsible for developing programs and services that support teaching and learning in and through the arts. Among the areas for which they are responsible are: conducting research, developing curriculum, identifying best practices, fostering quality teaching and accountability, developing and promoting state standards, mentoring teachers, and developing programs to serve diverse and/or at-risk populations. With inclusion by MDE of a new graduation standard around Native American arts and culture, the Perpich Center has taken a leadership role in disseminating information and assisting school districts in implementing this and other standards related to arts education.

Policy and Special Projects

The Perpich Center enjoys a national reputation for excellence. Professionals in this division represent the agency on appropriate regional and national boards to monitor trends, spearhead policies, recommend standards, introduce best practices, and identify new partnerships for the Perpich Center.

Arts High School

Administrative staff members include the school director, social worker, nurse, residence hall director, counselor, special education director, and other support services. The academic and arts teachers hold traditional or alternative teaching degrees and excel at reaching students who learn, communicate and achieve through an arts-focused, integrated curriculum. Art areas supported by the school are: literary, dance, music, visual, media, and theater. Students attend school from 8 a.m.- 4:15 p.m. The school administers a 24/7 residential program and a food program that includes breakfast-lunch-dinner.

Library & Learning Resource Center

The Library operates year-round and operates as a public access library.

Key Activity Goals & Measures

As an educational facility, goals of the Perpich Center promote teacher success and student achievement. These goals are established after review of state demographic and population trends, school district needs, agency budget and staffing levels, and national trends. Additional information is obtained from the Minnesota Department of Education, independent research, agency program evaluations, strategic planning goals established by the Perpich Center Board of Directors, and direction provided by government officials. Highlights are:

Key Activity: The Perpich Center for Arts Education will develop, implement, and disseminate arts education programs and services that reflect best practices and meet the diverse needs of the students and teachers it serves throughout the state of Minnesota.

Goal: To improve student learning.

Measure: Increased number of schools meeting state standards in arts education and increased use of technology and distance learning for teachers and students.

Goal: Increase percentage of applicants to the Arts High School from diverse populations.

Measure: Applications from students of color increased from 15% last year to 24% for the 2010-2011 academic year. Increases were highest among Black-African American students and American Indian-Alaskan Nationals.

Measure: As economic conditions worsen, lack of affordability for students from outstate Minnesota to attend the Arts High School continues to surface. This year, those qualifying and receiving free/ reduced financial assistance increased by 25%. This trend is expected to continue.

Goal: To improve teaching practices and accountability.

Measure: With funding from the Arts and Cultural Heritage Fund, the Perpich Center enrolled 10 schools from 10 school districts in West Central Minnesota in a pilot project to integrate arts education throughout the curriculum.

Measure: Established network of arts education teachers and specialists, covering 40-50 school districts. In a 2010 survey conducted by MDE, 85% of Minnesota school districts indicated need for services from the Perpich Center.

Key Activity: The Perpich Center will influence arts education policy through research, information sharing, and partnerships.

Goal: To provide research-based data on academic achievement associated with arts education and to improve standards related to teaching and learning in arts education.

Measure: Expanded partnerships on a state, national and international level to keep Minnesota in the forefront of trends and achievements related to the benefits of arts education. In June, the College Board invited the Perpich Center to participate as a delegate to China in an educational exchange program. Perpich is working to create a partnership with schools in China that focus on arts education. This fall, a group of educators and students from China will be guests of the Arts High School.

Measure: Established network of Minnesota schools focused on arts education. There are about 42 arts-focused schools in Minnesota; the Perpich Center is hosting a meeting for these schools in October at the Minnesota Department of Education to determine ways to strengthen collaboration and forge partnerships for teaching and learning.

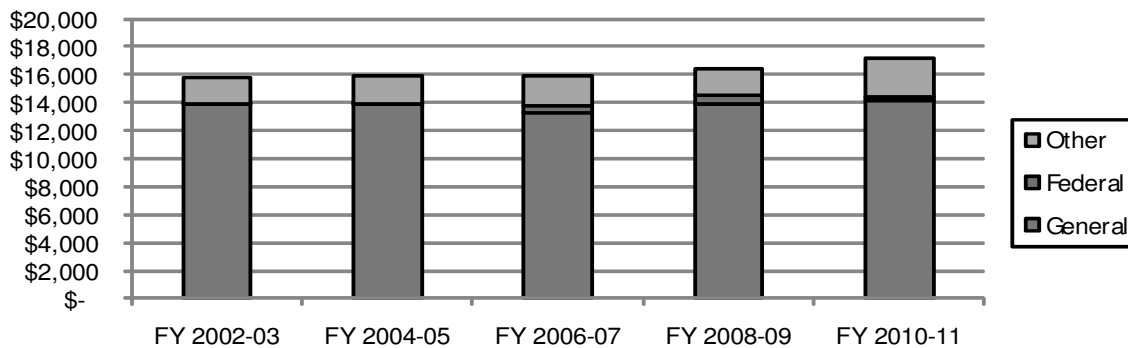
Key Activity: The Perpich Center will remain financially viable while furthering the agency mission and being good stewards of public funds.

Goal: To adopt cost accounting procedures that includes annual planning, programmatic review and analysis, and implementation of best practices.

Measure: All agency programs will be evaluated by August 2011 for reach, programmatic value, and cost-effectiveness. Opportunities for private/public partnerships will be researched and identified by August 2011.

Measure: The Perpich Center Board of Directors reviews thorough financial reporting monthly. The agency is on-schedule for SWIFT implementation.

Total Expenditures by Fund



Source data for the previous chart is the Minnesota Accounting and Procurement System (MAPS) as of 09/01/10.

Contact

Executive Offices of the Perpich Center for Arts Education: 763-591-4718
 Agency web site: <http://www.pcae.k12.mn.us>

Perpich Center for Arts Education
 6125 Olson Memorial Highway
 Golden Valley, Minnesota 55422

Dollars in Thousands

	Current		Forecast Base		Biennium 2012-13
	FY2010	FY2011	FY2012	FY2013	
<u>Direct Appropriations by Fund</u>					
General					
Current Appropriation	7,087	7,087	7,087	7,087	14,174
Forecast Base	7,087	7,087	7,087	7,087	14,174
Change		0	0	0	0
% Biennial Change from 2010-11					0%
Arts And Cultural Heritage					
Current Appropriation	300	700	700	700	1,400
Forecast Base	300	700	0	0	0
Change		0	(700)	(700)	(1,400)
% Biennial Change from 2010-11					-100%
<u>Expenditures by Fund</u>					
Direct Appropriations					
General	6,891	7,283	7,087	7,087	14,174
Arts And Cultural Heritage	185	815	0	0	0
Statutory Appropriations					
Miscellaneous Special Revenue	652	934	963	957	1,920
Federal	58	0	0	0	0
Gift	23	10	0	0	0
Total	7,809	9,042	8,050	8,044	16,094
<u>Expenditures by Category</u>					
Total Compensation	5,624	6,482	6,450	6,450	12,900
Other Operating Expenses	1,951	2,373	1,413	1,407	2,820
Capital Outlay & Real Property	1	0	0	0	0
Payments To Individuals	42	12	12	12	24
Local Assistance	191	175	175	175	350
Total	7,809	9,042	8,050	8,044	16,094
<u>Expenditures by Program</u>					
Center For Arts Educ	7,809	9,042	8,050	8,044	16,094
Total	7,809	9,042	8,050	8,044	16,094
Full-Time Equivalents (FTE)	80.4	80.1	75.6	75.3	

PERPICH CENTER FOR ARTS EDUC

Agency Revenue Summary

Dollars in Thousands

	Actual FY2010	Budgeted FY2011	Current Law		Biennium 2012-13
			FY2012	FY2013	
<i>Non Dedicated Revenue:</i>					
Total Non-Dedicated Receipts	0	0	0	0	0
<i>Dedicated Receipts:</i>					
Departmental Earnings:					
Miscellaneous Special Revenue	46	59	59	59	118
Grants:					
Federal	58	0	0	0	0
Other Revenues:					
Miscellaneous Special Revenue	618	573	871	871	1,742
Gift	2	0	0	0	0
Other Sources:					
Miscellaneous Special Revenue	9	14	14	14	28
Total Dedicated Receipts	733	646	944	944	1,888
Agency Total Revenue	733	646	944	944	1,888