

# **Annual Use Estimate of the Metropolitan Regional Parks System for 2009**

**Based on a four-year average of visitation  
data from 2006 through 2009**

**April 2010**

## Metropolitan Council Members

	Peter Bell	Chair	
Roger Scherer	District 1	Natalie Haas Steffen	District 9
Tony Pistilli	District 2	Kris Sanda	District 10
Robert McFarlin	District 3	Georgeanne Hilker	District 11
Craig Peterson	District 4	Sherry Broecker	District 12
Polly Bowles	District 5	Richard Aguilar	District 13
Peggy Leppik	District 6	Kirstin Sersland Beach	District 14
Annette Meeks	District 7	Daniel Wolter	District 15
Lynette Wittsack	District 8	Wendy Wulff	District 16

***T***he mission of the Metropolitan Council is to develop, in cooperation with local communities, a comprehensive regional planning framework, focusing on transportation, wastewater, parks and aviation systems that guide the efficient growth of the metropolitan area. The Council operates transit and wastewater services and administers housing and other grant programs.

General phone	651-602-1000
Regional Data Center	651-602-1140
TTY	651-291-0904
Metro Info Line	651-602-1888
E-mail	<a href="mailto:data.center@metc.state.mn.us">data.center@metc.state.mn.us</a>
Council Web site	<a href="http://www.metrocouncil.org">www.metrocouncil.org</a>

On request, this publication will be made available in alternative formats to people with disabilities. Please call the Metropolitan Council Data Center at 651-602-1140 or TTY 651-291-0904.

Printed on recycled paper with a minimum of 20% post-consumer waste.

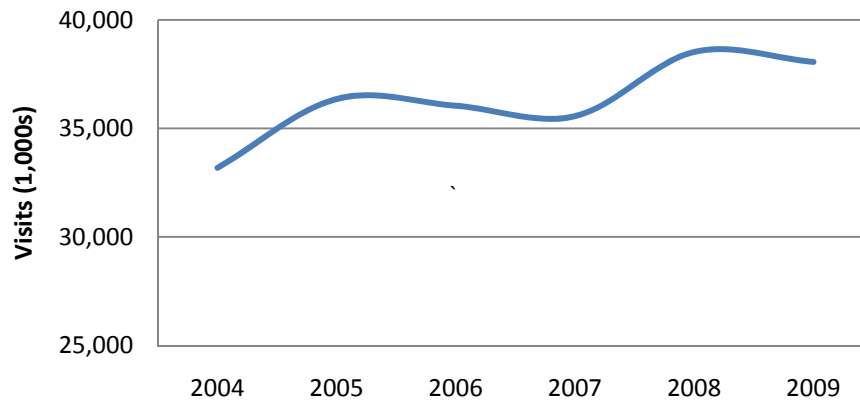
---

---

## Executive Summary

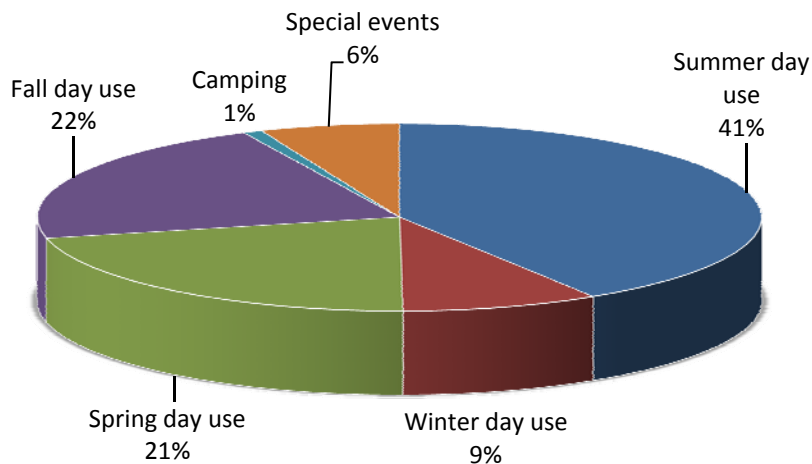
- An estimated **38,062,600 visits** were made to the Metropolitan Regional Parks System in 2009.
- Estimated annual visits have increased 15 percent since 2004. A total of 89 park and trail units were sampled in 2009 compared to 73 units sampled in 2004.

### Total Annual Visits: 2004 to 2009



- The following chart indicates the distribution of estimated visits by seasonal day use, camping and special events:

### 2009 Distribution of Regional Parks System Visits



- The five most-visited regional parks, trails and special recreation features in 2009 were:

<i>Park/Reserve/Trail</i>	<i>2009 Visits</i>
1. Minneapolis Chain of Lakes Regional Park	4,860,800
2. Como Regional Park, Zoo and Conservatory Special Recreation Feature	3,414,300
3. Mississippi Gorge Regional Park (Minneapolis & St. Paul)	2,035,800
4. Central Mississippi Riverfront Regional Park	1,516,000
5. Nokomis-Hiawatha Regional Park	1,509,500

- Fifty-six percent of all estimated visits occurred in regional parks and trails in Minneapolis and St. Paul. This reflects a decrease in the share of visits to those parks and trails in the regional system over time (65.7% share in 2000). This is due primarily to the addition of park and trail facilities and population growth occurring outside these two cities.
- Twenty-one percent of all visits in 2009 were to regional trails and 79 percent were visits to regional parks, park reserves and special recreation features. Although Anoka County Riverfront, Minneapolis Chain of Lakes, and Mississippi Gorge are regional parks, the majority of visits to these parks are for trail use. If the trail visits to Anoka County Riverfront, Minneapolis Chain of Lakes and Mississippi Gorge area were included in the trail totals, 38 percent of all 2009 visits were to trails.
- Fifty-five percent of all visits to regional parks and trails are considered “local” visits. A local visit is defined as a visit to a park or trail by a person who lives within the jurisdiction of the park agency that owns or operates that park or trail. Conversely, 45 percent of all visits to regional parks and trails are “non-local” visits, which clearly demonstrates that the system serves a regional audience.
- Walking and biking are the top activities in the regional parks system, followed by swimming, jogging, picnicking and relaxing. This information is based on data from the *Metropolitan Council Regional Parks and Trails Survey 2008*.

## Acknowledgements

The Metropolitan Regional Parks System is owned and managed by 10 county, city or special park district implementing agencies. Each agency is responsible for conducting the annual counts for their Regional Parks System units. Over 3,760 staff hours across agencies were put into the annual use sample counts for 2009, along with significant amounts of staff training and oversight. Without the help of the implementing agencies, the annual use estimate would not be possible.

The agencies and their count supervisors for 2009 are:

Anoka County – Cindy Higgins  
City of Bloomington – Mark Morrison  
Carver County – Lenny Schmitz  
Dakota County – Doug Gross  
Minneapolis Park and Recreation Board – Jennifer Ringold  
Ramsey County – Jody Yungers  
City of Saint Paul – Karen Clark  
Scott County – Patricia Freeman  
Three Rivers Park District – Jon Nauman and Sharon Brown  
Washington County – Lori Meyers

---

---

### Metropolitan Parks and Open Space Commission

The Metropolitan Parks and Open Space Commission advises the Metropolitan Council on system-wide policy planning issues regarding the Metropolitan Regional Parks System.

Charles Haas, Chair

Doug Baines	District A	Tom Gamec	District E
Robert Moeller	District B	Daniel Shlaferman	District F
Richard Jabs	District C	William Dinkel	District G
Jeffrey Lee	District D	Barbara Schmidt	District H

---

---

Report prepared by:  
Jan Youngquist  
Senior Planner-Parks  
Metropolitan Council

## Contents

Executive Summary .....	i
Introduction.....	1
How the annual use estimate is calculated.....	1

## Tables

Table 1: 2009 Visitation Estimate.....	3
Table 2: Special event counts for 2009.....	9
Table 3: Comparison of 2008 and 2009 visitation.....	24
Table 4: Comparison of 2008 and 2009 park vs. trail visitation.....	24
Table 5: Most-visited regional parks and trails.....	25
Table 6: Urban parks visitation.....	25
Table 7: Como visitation – park and zoo/conservatory special recreation feature .....	25
Table 8: Visitation estimates by agency for operations and maintenance formula purposes .....	26
Table 9: Regional Parks System units sample counted 2009 .....	27
Table 10: Comparison of estimated visits at the agency level from 2004 to 2009.....	28
Table 11: Top activities in the Regional Park System - 2009.....	29
Table 12: Visitor origin by agency .....	30
Table 13: Local and non-local visits by agency.....	31

## Introduction

The Metropolitan Regional Parks System that was sampled for this estimate in 2009 encompassed approximately 53,111 acres of parkland and included 38 regional parks, 12 park reserves, 6 special recreation features and 33 regional trails. These park/trail units are owned and operated by 10 implementing agencies – counties, special park districts and cities. The regional park implementing agencies include:

Anoka County	Ramsey County
City of Bloomington	City of St. Paul
Carver County	Scott County
Dakota County	Three Rivers Park District
Minneapolis Park & Recreation Board	Washington County

This report presents annual use estimates for 89 units sampled in the Regional Parks System from data collected in 2006 through 2009. The information is reported by park/trail units for each implementing agency. Some parks and trails have sub-units that are operated by different implementing agencies, so total use for that park or trail is comprised of the sum of individual agency units.

Use estimates are reported in “visits.” One person entering the park represents one visit. Therefore, if a person visits a particular park once each week for a year, that represents 52 visits to that park.

## How the annual use estimate is calculated

The annual use estimate is based on the average of four years (2006 – 2009) of summer counts of bikers, pedestrians, horse-riders, boats, vehicles and charter buses that enter the park through recognized park entrances. People in vehicles and buses are not counted individually. To determine the number of people entering in vehicles or buses, a person-per-vehicle average is multiplied by the number of vehicles or buses in each sample count. The person-per-vehicle averages come from the *Metropolitan Council Regional Parks and Trails Survey 2008*.

Counts are taken in two-hour samples between Memorial Day and Labor Day. Two-hour samples begin at 8 a.m., 10 a.m., 12 p.m., 2 p.m., 4 p.m. and 6 p.m. The entrances and times are randomly chosen, with the samples split evenly between weekdays and weekends. To accurately estimate summer use, at least 25 samples on weekends and 25 samples on weekdays in each park and trail are necessary, but it is cost-prohibitive to do 50 samples per park and trail every year. Therefore, the samples for the current year and the three previous years are combined to determine the annual use for each park and trail. For each year, at least 16 samples are drawn for each park and trail. The four-year approach results in a minimum of 32 samples on weekends and 32 samples on weekdays, which meets the statistical requirements for estimated visits.

**38,062,600**

Visits to the  
Regional Parks  
System in 2009

**53,111**  
Acres of  
Regional parkland

The four-year approach reduces the effect of extreme weather or other anomalies on each park’s estimated visitation. It reduces the effects of a temporary closure of a popular facility and from road construction to the facility. The four-year average also somewhat underestimates increased visitation associated with a major new facility such as a swim pond or play structure. By the fourth year of the facility’s existence, its visitation is fully represented in the data.

The annual estimate makes no attempt to correct for overestimates for temporary closures or underestimates for facility additions. All agencies in the regional system are adding desirable facilities and experiencing temporary closures of facilities that are being redeveloped. Therefore, it is believed that the four-year average has negligible effects when comparing visitation across agencies.

Summer visitation is calculated by taking the total number of people entering the park during each sample and multiplying it by the number of entrances and time slots that sample represents. Winter, spring and fall seasonal visitation estimates are then calculated from the summer visitation using seasonal multiplier data derived from the *Metropolitan Council Regional Parks and Trails Survey 2008*.

Camping visits are also added to the annual estimate. A camping visit is defined as a camper in the park for any part of a day, so a family of four who camped one night would be counted as 8 total visits. Special events are also added to the annual use estimate when the attendance was greater than 300 people and the event did not take place during the sample counts. If sample counts occurred during a special event, they were not included in the estimate. Camping and special event data are not averaged across four years since the implementing agencies have records reflecting those types of visits on an annual basis.

**38** Regional Parks  
**12** Park Reserves  
**6** Special Recreation Features  
**33** Regional Trails



**Table 1: 2009 Visitation Estimate**

Agency/Park	Summer		Winter		Spring/Fall		Other *		Total Visits (1,000's)	O & M Grant Adjustments
	visits (1,000's)	use multiplier	visits (1,000's)	use multiplier	visits (1,000's)	use multiplier	Camping (1,000's)	Special Events (1,000's)		
<b>ANOKA COUNTY:</b>										
Anoka Co. Riverfront RP <sup>1</sup>	128.9	0.245	31.6	1.054	135.8		0.0	0.0	296.3	Bunker Beach
Bunker Hills RP	325.1	0.178	57.9	0.957	311.1		39.5	175.1	908.6	-69.6
Central Anoka RT	24.9	0.306	7.6	1.317	32.8		0.0	0.0	65.3	
Coon Rapids Dam RP	223.2	0.178	39.7	0.957	213.6		0.0	17.2	493.6	
Lake George RP	153.9	0.178	27.4	0.957	147.3		0.0	6.9	335.5	
Martin-Island-Linwood Lakes RP	68.1	0.178	12.1	0.957	65.1		0.0	6.2	151.5	
Mississippi River RT	28.7	0.306	8.8	1.317	37.8		0.0	0.0	75.4	
Rice Creek Chain PR	160.7	0.178	28.6	0.957	153.8		28.8	50.5	422.5	
Rice Creek North RT	29.9	0.306	9.1	1.317	39.3		0.0	0.0	78.3	
Rice Creek West RT	139.0	0.306	42.5	1.317	183.0		0.0	0.0	364.5	
Rum River Central RP	41.7	0.178	7.4	0.957	39.9		0.0	0.0	89.1	
RP/PR/SRF subtotals	1,101.6		204.7		1,066.7		68.3	255.8	2,697.1	
RT subtotals	222.5		68.1		293.0		0.0	0.0	583.6	
<b>Subtotal:</b>	<b>1,324.1</b>		<b>272.8</b>		<b>1,359.7</b>		<b>68.3</b>	<b>255.8</b>	<b>3,280.7</b>	<b>3,211.1</b>

Agency/Park	Summer		Winter		Spring/Fall		Other *		Total Visits (1,000's)	O & M Grant Adjustments
	visits (1,000's)	use multiplier	visits (1,000's)	use multiplier	visits (1,000's)	use multiplier	Camping (1,000's)	Special Events (1,000's)		
<b>BLOOMINGTON:</b>										
Bush and Normandale Lakes RP	215.6	0.178	38.4	0.957	206.3		0.0	52.4	512.6	
<b>Subtotal:</b>	<b>215.6</b>		<b>38.4</b>		<b>206.3</b>		<b>0.0</b>	<b>52.4</b>	<b>512.6</b>	<b>512.6</b>

Agency/Park	Summer		Winter		Spring/Fall		Other *		Total Visits (1,000's)	O & M Grant Adjustments
	visits (1,000's)	use multiplier	visits (1,000's)	use multiplier	visits (1,000's)	use multiplier	Camping (1,000's)	Special Events (1,000's)		
<b>CARVER COUNTY:</b>										
Baylor RP	17.3	0.178	3.1	0.957	16.5		21.0	6.0	63.9	
Lake Minnewashta RP	56.0	0.178	10.0	0.957	53.6		0.0	4.7	124.3	
Lake Waconia RP	31.5	0.178	5.6	0.957	30.1		0.0	10.1	77.3	
RP/PR/SRF subtotals	104.7		18.6		100.2		21.0	20.8	265.5	
RT subtotals	0.0		0.0		0.0		0.0	0.0	0.0	
<b>Subtotal:</b>	<b>104.7</b>		<b>18.6</b>		<b>100.2</b>		<b>21.0</b>	<b>20.8</b>	<b>265.5</b>	<b>265.5</b>

**Notes:**  
**All visits are listed in units of 1,000 (i.e., "50.5" is equivalent to 50,500 visits).**  
 RP = Regional Park; PR = Park Reserve; RT = Regional Trail; SRF = Special Recreation Feature  
 \* OTHER: Camping is in "visitor-days," where each visit is one person in the park for one day. A family of four staying one night would have 8 visitor-days. Special events include events over 300 and any unusual park-specific situations. Special events and situations are detailed in Table 2.

<sup>1</sup> In this park the majority of users are trail users. The multipliers were adjusted to reflect the mix of trail and park use.

**Table 1: 2009 Visitation Estimate**

Agency/Park	Summer		Winter		Spring/Fall		Other *		Total Visits (1,000's)	O & M Grant Adjustments
	visits (1,000's)	use multiplier	visits (1,000's)	use multiplier	visits (1,000's)	use multiplier	Camping (1,000's)	Special Events (1,000's)		
<b>DAKOTA COUNTY:</b>										
Big Rivers RT	54.4	0.306	16.6		1.317	71.6	0.0	0.0	142.7	
Lake Byllesby RP	53.4	0.178	9.5		0.957	51.1	18.1	0.0	132.1	
Lebanon Hills RP	166.0	0.178	29.5		0.957	158.8	30.3	63.3	447.9	
Miesville Ravine PR	30.0	0.178	5.3		0.957	28.7	0.0	0.0	64.1	
Mississippi River RT	8.5	0.306	2.6		1.317	11.1	0.0	0.0	22.2	
North Urban RT <sup>B</sup>	14.7	0.306	4.5		1.317	19.4	0.0	0.0	38.6	
Spring Lake PR	33.5	0.178	6.0		0.957	32.0	0.0	10.8	82.2	
RP/PR/SRF subtotals	282.8		50.3		270.7		48.4	74.1	726.4	
RT subtotals	77.5		23.7		102.1		0.0	0.0	203.4	
Subtotal:	360.4		74.1		372.8		48.4	74.1	929.8	929.8

Agency/Park	Summer		Winter		Spring/Fall		Other *		Total Visits (1,000's)	O & M Grant Adjustments
	visits (1,000's)	use multiplier	visits (1,000's)	use multiplier	visits (1,000's)	use multiplier	Camping (1,000's)	Special Events (1,000's)		
<b>MPLS. PARK &amp; RECREATION BOARD:</b>										
Cedar Lake RT	135.0	0.306	41.3		1.317	177.8	0.0	0.0	354.1	
Central Mississippi Riverfront RP	640.0	0.178	113.9		0.957	612.5	0.0	149.6	1,516.0	
Columbia Parkway RT	26.5	0.306	8.1		1.317	35.0	0.0	0.0	69.6	
Kenilworth RT <sup>B</sup>	235.2	0.306	72.0		1.317	309.8	0.0	0.0	617.0	
Luce Line RT <sup>B</sup>	23.9	0.306	7.3		1.317	31.5	0.0	0.0	62.7	
Minneapolis Chain-of-Lakes RP <sup>1</sup>	2,048.9	0.245	502.0		1.054	2,159.6	0.0	150.3	4,860.8	
Minnehaha Parkway RT	480.8	0.306	147.1		1.317	633.2	0.0	46.4	1,307.6	
Minnehaha RP	611.3	0.178	108.8		0.957	585.0	0.0	21.4	1,326.4	
Mississippi Gorge RP	329.9	0.306	101.0		1.317	434.5	0.0	70.8	936.1	
Northeast Diagonal RT <sup>A</sup>	61.2	0.306	18.7		1.317	80.6	0.0	0.0	160.5	
Nokomis-Hiawatha RP	664.2	0.178	118.2		0.957	635.6	0.0	91.4	1,509.5	
North Mississippi RP	98.4	0.178	17.5		0.957	94.2	0.0	1.8	211.9	
Ridgeway Parkway RT	9.7	0.306	3.0		1.317	12.7	0.0	0.0	25.3	
St. Anthony Parkway RT	57.7	0.306	17.6		1.317	75.9	0.0	0.0	151.3	
Theodore Wirth RP	174.8	0.178	31.1		0.957	167.3	0.0	3.5	376.7	
Victory (Wirth) Memorial Parkway RT	238.4	0.306	73.0		1.317	314.0	0.0	2.0	627.4	
RP/PR/SRF subtotals	4,567.5		992.5		4,688.7		0.0	488.7	10,737.4	
RT subtotals	1,268.5		388.2		1,670.6		0.0	48.4	3,375.6	
Subtotal:	5,836.0		1,380.7		6,359.2		0.0	537.1	14,113.0	14,113.0

**Notes:**  
**All visits are listed in units of 1,000 (i.e., "50.5" is equivalent to 50,500 visits).**  
 RP = Regional Park; PR = Park Reserve; RT = Regional Trail; SRF = Special Recreation Feature  
 \* OTHER: Camping is in "visitor-days," where each visit is one person in the park for one day. A family of four staying one night would have 8 visitor-days. Special events include events over 300 and any unusual park-specific situations. Special events and situations are detailed in Table 2.

<sup>1</sup> In this park the vast majority of users are trail users. The multipliers were adjusted to reflect the mix of trail and park use.  
<sup>A</sup> 1st year sampled  
<sup>B</sup> 2nd year sampled

**Table 1: 2009 Visitation Estimate**

Agency/Park	Summer		Winter		Spring/Fall		Other *		Total Visits (1,000's)	O & M Grant Adjustments
	visits (1,000's)	use multiplier	visits (1,000's)	use multiplier	visits (1,000's)	use multiplier	Camping (1,000's)	Special Events (1,000's)		
<b>RAMSEY COUNTY</b>										
Bald Eagle-Otter Lake RP	117.3	0.178	20.9	0.957	112.3	0.0	21.7	272.3		
Battle Creek RP	290.3	0.178	51.7	0.957	277.9	0.0	15.2	635.0		
Birch Lake RT	15.3	0.306	4.7	1.317	20.2	0.0	0.0	40.2		
Bruce Vento RT	38.0	0.306	11.6	1.317	50.0	0.0	0.0	99.6		
Grass-Vadnais-Snail Lake RP	244.1	0.178	43.5	0.957	233.6	0.0	9.5	530.7		
Highway 96 RT	80.3	0.306	24.6	1.317	105.7	0.0	0.0	210.6		
Keller RP	133.1	0.178	23.7	0.957	127.4	0.0	0.0	284.2		
Long Lake RP	225.7	0.178	40.2	0.957	216.0	0.0	20.5	502.3		
Rice Creek North RT	44.6	0.306	13.7	1.317	58.8	0.0	0.0	117.0		
Rice Creek West RT	32.2	0.306	9.9	1.317	42.4	0.0	0.0	84.5		
Tony Schmidt RP	116.3	0.178	20.7	0.957	111.3	0.0	0.4	248.8		
Trout Brook RT	12.3	0.306	3.8	1.317	16.2	0.0	0.0	32.2		
RP/PR/SRF subtotals	1,126.9		200.6		1,078.5	0.0	67.2	2,473.2		
RT subtotals	222.7		68.1		293.3	0.0	0.0	584.1		
Subtotal:	1,349.6		268.7		1,371.8	0.0	67.2	3,057.3		3,057.3

Agency/Park	Summer		Winter		Spring/Fall		Other *		Total Visits (1,000's)	O & M Grant Adjustments
	visits (1,000's)	use multiplier	visits (1,000's)	use multiplier	visits (1,000's)	use multiplier	Camping (1,000's)	Special Events (1,000's)		
<b>CITY OF ST. PAUL</b>										
Bruce Vento RT	35.8	0.306	11.0	1.317	47.2	0.0	11.4	105.4		
Cherokee Heights RP	103.2	0.178	18.4	0.957	98.8	0.0	3.9	224.3		Downhill Ski
Como RP, Zoo & Conservatory SRF	1,413.7	0.178	251.6	0.957	1,352.9	0.0	396.0	3,414.3		-1.3
Hidden Falls-Crosby Farm RP	178.8	0.178	31.8	0.957	171.1	0.0	12.3	394.0		
Indian Mounds RP	53.2	0.178	9.5	0.957	50.9	0.0	8.9	122.5		
Lilydale-Harriet Island RP	252.8	0.178	45.0	0.957	241.9	0.0	346.9	886.6		
Mississippi Gorge RP	396.4	0.306	121.3	1.317	522.1	0.0	59.9	1,099.7		
Phalen RP	344.3	0.178	61.3	0.957	329.5	0.0	72.7	807.7		
Samuel Morgan RT	66.4	0.306	20.3	1.317	87.4	0.0	1.0	175.1		
RP/PR/SRF subtotals	2,742.4		538.9		2,767.2	0.0	900.6	6,949.0		
RT subtotals	102.2		31.3		134.6	0.0	12.4	280.6		
Subtotal:	2,844.6		570.2		2,901.8	0.0	913.0	7,229.5		7,228.2

**Notes:**  
**All visits are listed in units of 1,000 (i.e., "50.5" is equivalent to 50,500 visits).**  
 RP = Regional Park; PR = Park Reserve; RT = Regional Trail; SRF = Special Recreation Feature  
 \* OTHER: Camping is in "visitor-days," where each visit is one person in the park for one day. A family of four staying one night would have 8 visitor-days. Special events include events over 300 and any unusual park-specific situations. Special events and situations are detailed in Table 2.

**Table 1: 2009 Visitation Estimate**

Agency/Park	Summer		Winter		Spring/Fall		Other *		Total Visits (1,000's)	O & M Grant Adjustments
	visits (1,000's)	use multiplier	visits (1,000's)	use multiplier	visits (1,000's)	use multiplier	Camping (1,000's)	Special Events (1,000's)		
<b>SCOTT COUNTY</b>										
Cedar Lake Farm RP <sup>A 1</sup>	5.3	0.000	0.0		0.479	2.6	0.0	0.5	8.4	
Scott County RT	94.1	0.306	28.8		1.317	123.9	0.0	0.0	246.7	
RP/PR/SRF subtotals	5.3		0.0		2.6		0.0	0.5	8.4	
RT subtotals	94.1		28.8		123.9		0.0	0.0	246.7	
Subtotal:	99.4		28.8		126.4			0.5	255.1	255.1

Agency/Park	Summer		Winter		Spring/Fall		Other *		Total Visits (1,000's)	O & M Grant Adjustments
	visits (1,000's)	use multiplier	visits (1,000's)	use multiplier	visits (1,000's)	use multiplier	Camping (1,000's)	Special Events (1,000's)		
<b>THREE RIVERS - SCOTT COUNTY</b>										
Cleary Lake RP	106.5	0.178	19.0		0.957	101.9	20.1	1.8	249.3	
Murphy-Hanrehan PR	18.5	0.178	3.3		0.957	17.7	2.1	1.2	42.7	
RP/PR/SRF subtotals	125.0		22.2		119.6		22.2	3.0	292.0	
RT subtotals	0.0		0.0		0.0		0.0	0.0	0.0	
Three Rivers - Scott Subtotal:	125.0		22.2		119.6		22.2	3.0	292.0	292.0

**Notes:**  
**All visits are listed in units of 1,000 (i.e., "50.5" is equivalent to 50,500 visits).**  
 RP = Regional Park; PR = Park Reserve; RT = Regional Trail; SRF = Special Recreation Feature  
 \* OTHER: Camping is in "visitor-days," where each visit is one person in the park for one day. A family of four staying one night would have 8 visitor-days. Special events include events over 300 and any unusual park-specific situations. Special events and situations are detailed in Table 2.  
 ^ 1st year sampled  
<sup>1</sup> The regional park was not open in the winter and spring of 2009, so the seasonal multipliers have been adjusted to reflect summer and fall use.

**Table 1: 2009 Visitation Estimate**

Agency/Park	Summer		Winter		Spring/Fall		Other *		Total Visits (1,000's)	O & M Grant Adjustments
	visits (1,000's)	use multiplier	visits (1,000's)	use multiplier	visits (1,000's)	use multiplier	Camping (1,000's)	Special Events (1,000's)		
<b>THREE RIVERS PARK DISTRICT</b>										
Baker PR	142.7	0.178	25.4	0.957	136.6	0.957	83.7	18.3	406.7	
Bassett Creek RT	37.2	0.306	11.4	1.317	48.9	1.317	0.0	0.0	97.5	
Bryant Lake RP	178.4	0.178	31.8	0.957	170.8	0.957	0.0	0.6	381.5	
Carver PR	99.9	0.178	17.8	0.957	95.6	0.957	21.7	22.6	257.6	
Cedar Lake LRT RT	171.7	0.306	52.5	1.317	226.1	1.317	0.0	0.2	450.6	
Clifton French RP	183.6	0.178	32.7	0.957	175.7	0.957	0.0	5.8	397.8	
Coon Rapids Dam RP	100.5	0.178	17.9	0.957	96.2	0.957	0.0	6.0	220.6	
Crow-Hassan PR	24.5	0.178	4.4	0.957	23.4	0.957	5.6	0.4	58.3	
Dakota Rail RT <sup>A 2</sup>	153.8	0.000	0.0	0.659	101.3	0.659	0.0	0.0	255.1	
Eagle Lake RP	27.8	0.178	5.0	0.957	26.6	0.957	0.0	0.0	59.4	
Elm Creek PR	293.6	0.178	52.3	0.957	281.0	0.957	1.0	108.2	735.9	
Fish Lake RP	56.4	0.178	10.0	0.957	54.0	0.957	0.0	0.4	120.8	
Gale Woods SRF	26.6	0.178	4.7	0.957	25.4	0.957	0.0	25.8	82.5	Downhill ski
Hyland Lake PR	254.2	0.178	45.3	0.957	243.3	0.957	3.9	209.2	755.9	-171.6
Lake Independence RT	13.2	0.306	4.1	1.317	17.4	1.317	0.0	0.0	34.7	
Lake Minnetonka RP	128.5	0.178	22.9	0.957	122.9	0.957	0.0	1.8	276.1	
Lake Minnetonka Islands RP <sup>1</sup>	65.0	n/a	0.0	n/a	0.0	n/a	0.0	0.0	65.0	
Lake Minnetonka LRT RT	126.4	0.306	38.7	1.317	166.4	1.317	0.0	0.0	331.4	
Lake Rebecca PR	63.4	0.178	11.3	0.957	60.7	0.957	5.0	5.0	145.4	
Luce Line RT	49.3	0.306	15.1	1.317	64.9	1.317	0.0	0.0	129.4	
Medicine Lake RT	124.5	0.306	38.1	1.317	163.9	1.317	0.0	0.0	326.4	
Minnesota River Bluffs LRT RT	99.2	0.306	30.4	1.317	130.7	1.317	0.0	0.0	260.3	
Noerenberg Gardens SRF	29.6	0.000	0.0	0.957	28.4	0.957	0.0	0.3	58.3	
North Cedar Lake RT	164.1	0.306	50.2	1.317	216.1	1.317	0.0	0.0	430.4	
North Mississippi RP	22.3	0.178	4.0	0.957	21.3	0.957	0.0	7.8	55.4	
Northeast Diagonal RT <sup>A</sup>	19.6	0.306	6.0	1.317	25.8	1.317	0.0	0.0	51.5	
Rush Creek RT	105.3	0.306	32.2	1.317	138.7	1.317	0.0	0.0	276.3	
Shingle Creek RT	34.8	0.306	10.6	1.317	45.8	1.317	0.0	0.0	91.3	
Silverwood SRF	22.8	0.178	4.1	0.957	21.8	0.957	0.0	5.3	53.9	
RP/PR/SRF subtotals	1,719.8		289.3		1,583.6		120.9	417.6	4,131.0	
RT subtotals	1,099.1		289.3		1,346.3		0.0	0.0	2,734.8	
Three Rivers Subtotal:	2,818.9		578.5		2,929.9		120.9	417.6	6,865.8	6,694.2
Three Rivers-Scott & Three Rivers Park District Subtotal:	<b>2,943.9</b>		<b>600.8</b>		<b>3,049.5</b>		<b>143.1</b>	<b>420.6</b>	<b>7,157.9</b>	<b>6,986.3</b>

**Notes:**  
**All visits are listed in units of 1,000 (i.e., "50.5" is equivalent to 50,500 visits).**  
 RP = Regional Park; PR = Park Reserve; RT = Regional Trail; SRF = Special Recreation Feature  
 \* OTHER: Camping is in "visitor-days," where each visit is one person in the park for one day. A family of four staying one night would have 8 visitor-days. Special events include events over 300 and any unusual park-specific situations. Special events and situations are detailed in Table 2.  
<sup>1</sup> Lake Minnetonka Islands total annual visitation data is provided from Three Rivers and is not based on the Metropolitan Council sample.  
<sup>2</sup> The regional trail was not open in the winter and spring of 2009, so the seasonal multipliers have been adjusted to reflect summer and fall use.  
<sup>A</sup> 1st year sampled

**Table 1: 2009 Visitation Estimate**

Agency/Park	Summer	Winter		Spring/Fall		Other *		Total Visits (1,000's)	O & M Grant Adjustments
	visits (1,000's)	use multiplier	visits (1,000's)	use multiplier	visits (1,000's)	Camping (1,000's)	Special Events (1,000's)		
<b>WASHINGTON COUNTY</b>									
Big Marine PR	72.3	0.178	12.9	0.957	69.2	0.0	0.0	154.3	
Cottage Grove Ravine RP	28.2	0.178	5.0	0.957	27.0	0.0	3.0	63.3	
Hardwood Creek RT	87.5	0.306	26.8	1.317	115.3	0.0	0.0	229.5	
Lake Elmo PR	212.7	0.178	37.9	0.957	203.5	27.4	18.7	500.2	
Pine Point RP	48.1	0.178	8.6	0.957	46.0	0.0	1.8	104.5	
Square Lake SRF	34.8	0.000	0.0	0.957	33.3	0.0	2.8	70.8	
St. Croix Bluffs RP	56.0	0.178	10.0	0.957	53.6	15.6	3.4	138.5	
RP/PR/SRF subtotals	452.1		74.3		432.6	43.0	29.7	1,031.7	
RT subtotals	87.5		26.8		115.3	0.0	0.0	229.5	
Subtotal:	539.6		101.1		547.9	43.0	29.7	1,261.2	1,261.2

**REGIONAL TOTALS**

Agency/Park	Summer	Winter	Spring/Fall	Other *		Total Visits (1,000's)	O & M Grant Adjustments
	visits (1,000's)	visits (1,000's)	visits (1,000's)	Camping (1,000's)	Special Events (1,000's)		
RP/PR/SRF subtotals	12,443.8	2,429.9	12,316.6	323.8	2,310.4	29,824.2	
RT subtotals	3,174.1	924.2	4,079.0	0.0	60.8	8,238.3	
<b>REGIONAL TOTALS</b>	<b>15,617.9</b>	<b>3,354.1</b>	<b>16,395.6</b>	<b>323.8</b>	<b>2,371.2</b>	<b>38,062.6</b>	<b>37,820.1</b>

**Notes:**  
 All visits are listed in units of 1,000 (i.e., "50.5" is equivalent to 50,500 visits).  
 RP = Regional Park; PR = Park Reserve; RT = Regional Trail; SRF = Special Recreation Feature  
 \* OTHER: Camping is in "visitor-days," where each visit is one person in the park for one day. A family of four staying one night would have 8 visitor-days. Special events include events over 300 and any unusual park-specific situations. Special events and situations are detailed in Table 2.

## Table 2: Special event counts for 2009

(Note: these events occurred at times that were specifically not sampled to avoid double-counting)

Agency/Park	Date	Event	Visits (1,000s)
<b>ANOKA COUNTY:</b>			
<b>Anoka Co. Riverfront RP</b>		<b>None</b>	<b>-</b>
<b>Bunker Hills RP</b>		<b>TOTAL:</b>	<b>175.1</b>
	Apr 26	North Suburban Striders	0.4
	May 23	Veteran's Memorial Day Event	0.5
	May 16	Daniels Wedding	0.3
	May 23	Memorial Day Event	0.4
	May 23	Holtmeier Wedding	0.3
	May 28	LO Jacobs Event	0.3
	Jun 6	Krone Wedding	0.3
	Jun 24	Girl Scout Camp	0.3
	Jun 28	Dupont Family Reunion	0.3
	Jul 4	Emmanuel Christian Center	0.3
	Jul 12	Christensen Wedding	0.3
	Jul 15	AC-Foster Family Event	0.3
	Jul 18	Vang Family Reunion	0.3
	Jul 24	Keyzers Wedding	0.3
	Jul 31	Boston Scientific	0.4
	Aug 8	Carpenter's Local 851	0.3
	Aug 14	Boston Scientific	0.4
	Aug 15	IBEW Local 292	1.4
	Aug 23	Anoka County Employees Club	0.4
	Oct 10	Alexandra House Walk	0.6
	May-July	Natural Resources Workshop	3.0
	Summer Long	Bunker Beach Visitation	69.6
	Summer Long	Bunker Park Stables Usage (entrance not part of regular counts)	25.0
	Sep 24	MRPA Event	0.3
	Sep 12	Bunker Prairie Festival	1.3
	Year Long	Activity Center Usage (entrance not part of regular counts)	51.3
	Year Long	Archery Center Use (entrance not part of regular counts)	16.5
<b>Central Anoka RT</b>		<b>None</b>	<b>-</b>
<b>Coon Rapids Dam RP</b>		<b>TOTAL:</b>	<b>17.2</b>
	Apr 18	Bill Gallagher Memorial Event	1.0
	May 2	Randy Bauer Run	0.3
	May 3	Volunteer Planting Event	0.4
	May 16	Kruschke Wedding	0.3
	Feb 15	Trout Opener	0.5
	May 5	Kids Fishing Clinic	1.5
	Jun 1	Schiller Wedding	0.3
	Jun 12	Concert in the Park	2.2
	Jun 13	Du at the Dam	0.3
	Jun 14	Xiong Family Reunion	0.4
	Jun 18	Concert in the Park	2.0
	Jun 24	Adventures Plus	0.3
	Jun 25	Concert in the Park	1.5
	Jun 27	Lenton Wedding	0.3
	Jul 9	Concert in the Park	1.0
	Jul 16	Concert in the Park	1.3
	Jul 26	Kyne Engagement Party	0.3
	Jul 30	Concert in the Park	1.6
	Jul 31	Peak Adventures	0.3
	Sep 5	Twin Cities Hmong Alliance	0.3
	Sep 12	Missing Grace	0.9
	Sep 27	St. Stephen's School Marathon	0.3
<b>Lake George RP</b>		<b>TOTAL:</b>	<b>6.9</b>
	Jul 4	Minneman Triathlon	0.7
	May 19	St Francis High School	0.4
	May 29	St Francis High School	0.4
	Jun 26	YMCA Event	0.3
	Jul 10	YMCA Event	0.3
	Jul 24	YMCA Event	0.3
	Aug 9	LaNave Reception	0.3
	Summer Long	YMCA Camps	1.7
	Winter	Snowmobile Use through park	2.5
<b>Martin-Island-Linwood Lakes RP</b>		<b>TOTAL:</b>	<b>6.2</b>
	Winter	Snowmobile Use through park	2.5
	Year Long	Camp Salie Usage	3.7

## Table 2: Special event counts for 2009

(Note: these events occurred at times that were specifically not sampled to avoid double-counting)

Agency/Park	Date	Event	Visits (1,000s)
<b>ANOKA COUNTY: continued</b>			
Mississippi River RT		None	-
Rice Creek Chain PR		<b>TOTAL:</b>	<b>50.5</b>
	May 31	Treasured Chests	0.4
	April	Earth Day	0.5
	February	Snow Day	0.5
	September	Hay Days	0.6
	Winter	Snowmobile Use through park	2.5
	Jun 28	CMA Group	0.3
	Year Long	Wargo Nature Center Attendance	45.4
	Aug 8	Centerville Park and Rec Event	0.4
Rice Creek North RT		None	-
Rice Creek West RT		None	-
Rum River Central RP		None	-
<b>BLOOMINGTON:</b>			
Bush and Normandale Lakes		<b>TOTAL:</b>	<b>52.4</b>
	May 26	High School Band Concert	0.3
	May 27	High School Band Concert	0.3
	Jun 9	Minnesota Symphonic Winds	0.4
	Jun 13	Make a Wish Foundation Walk for Wishes	0.5
	Jun 18	A Celtic Solstice	0.3
	Jun 25	Hard Days Night Concert	0.5
	Jun 28	Sandcastles	0.3
	Jul 3	Summer Fete	40.0
	Jul 9	80's Music Explosion	1.1
	Jul 12	Bandshell non-profit Rental	0.7
	Jul 23	Latin Music Night	1.5
	Jul 24	Movie in the Park	0.9
	Jul 30	Rock Show	0.7
	Aug 4	Bloomington Symphony Orchestra	0.3
	Aug 6	Blues and Bar-B-Q	1.4
	Aug 9	Bloomington Jazz Festival	0.6
	Aug 15	American Cancer Society 5k Fun Run/Walk	0.8
	Sep 12	PKD Foundation Walk and Concert	0.5
	Sep 27	Iron Girl Duathlon	1.0
	Oct 11	2nd Annual walk to Live and Breath	0.3
<b>CARVER COUNTY:</b>			
Baylor RP		<b>TOTAL:</b>	<b>6.0</b>
	Aug 29	Running Meet	0.4
	Sep 8	Running Meet	1.5
	All year	Onan Observatory (late evening use)	3.8
	Mar 15	Maple Syruping	0.3
Lake Minnewashta RP		<b>TOTAL:</b>	<b>4.7</b>
	May 16-17	Tonka Waters Girl Scout Camp (350/day)	0.7
	Jul 4	Fireworks	0.8
	Jul 27-30	Rive Bluff Girl Scout Jamboree Week 1 (390/day)	1.6
	Aug 3-6	Rive Bluff Girl Scout Jamboree Week 2 (420/day)	1.7
Lake Waconia RP		<b>TOTAL:</b>	<b>10.1</b>
	Jan 31	Vintage Snowmobile	3.5
	Feb 1	Vintage Snowmobile	2.0
	Jun 28	Triathlon	1.6
	Jul 4	4th of July celebration	3.0



## Table 2: Special event counts for 2009

(Note: these events occurred at times that were specifically not sampled to avoid double-counting)

Agency/Park	Date	Event	Visits (1,000s)
<b>DAKOTA COUNTY:</b>			
Big Rivers RT		None	-
Lake Byllesby RP		None	-
Lebanon Hills RP		<b>TOTAL:</b>	<b>63.3</b>
Summer		Adventure Ropes Course	1.4
School year		VC school groups	1.9
All year		Outdoor Education Programs	4.8
Dec 31		NYE Event	0.7
Year round		Camp Sacajawea (day camp and permit only - not counted in regular counts)	54.5
Miesville Ravine PR		None	-
Mississippi River RT		None	-
Spring Lake PR		<b>TOTAL:</b>	<b>10.8</b>
All Year		Outdoor Education Programs	0.4
Year round		Spring Lake Youth Camp (day camp and permit only - not counted in regular coun	10.4
<b>MINNEAPOLIS PARK &amp; RECREATION BOARD:</b>			
Cedar Lake RT		None	-
Central Mississippi Riverfront RP		<b>TOTAL</b>	<b>149.6</b>
Apr 19		U of Minnesota Law Run / Main Street & Stone Arch	0.7
May 31		Downtowner 1/2 Marathon (split Central Miss RP, Miss Gorge )	2.0
Jun 19 - 21		Stone Arch Festival of the Arts	70.0
Jun 21		Solstice River Performance - Stone Arch Bridge	1.0
Jun 28		Pacemaker 5000 (Stone Arch Br, Boom Is, Main St., W River Pkway)	0.3
Jul 22		Torchlight Run	4.5
Jul 25		Aquatennial Fireworks	50.0
Jul 25		Mississippi River Challenge - Bassett's Creek - Rowing Club	1.5
Aug 8		Guyana Day - Boom Island	0.4
Aug 14 - 16		TC Polish Festival	5.0
Aug 15		Polish festival - 5K - Nicollet Island	0.3
Aug 22		Ragnar Relay/Boom Island	2.5
Aug 22		2009 Night Owl Classic Boom Is, Fr Hennepin, Main St., E River Pkwy/Flats	0.5
Aug 28		MAD DADS Sr Citizen Safety Pride Day - Boom Island	0.4
Aug 30		Downtown Dualthon - split Nicollet Island, Boom Island, W River Road	1.0
Sep 12		James Page 5K / Main Street & Stone Arch	1.5
Sep 11-12		MS Challenge (split Central Miss RP, Miss Gorge RP, Chain of Lakes RP, Minn Pk	0.1
Sep 20		Minneapolis Tour (split Central Miss, Chain of Lakes, Minnehaha RT, Minnehaha F	0.5
Sep 18 - 19		Oktoberfest - Main St Parkway	7.0
Oct 10		Historic Riverfron 5K Run Walk - Boom Is, Nicollet Is, Stone Arch	0.4
Columbia Parkway RT		None	-
Kenilworth RT		None	-
Luce Line RT		None	-
Minneapolis Chain-of-Lakes RP		<b>TOTAL</b>	<b>150.3</b>
Jan 30 to Feb 1		Loppet (split Chain of Lakes and Theodore Wirth RP)	0.5
Feb 14		Valentine's Run/Lake Harriet	1.2
Mar 7		Minneapoils Polar Bear Plunge	4.5
Mar 14		Irish 5K/Lake Harriet	2.2
Apr 19		Recycle Run	0.6
Apr 25-26		March of Dimes	4.0
May 2		Walk a Thon/Lake Calhoun	1.1
May 2		IT 5K for Autism	0.5
May 16		Autism awarenss walk	0.6
Jun 1		Concert	0.3
Jun 2		Concert	0.3
Jun 3		Concert	0.4
Jun 4		Concert	0.5
Jun 5		Concert	0.8
Jun 5		Barton School - 8th Grade graduation	0.7
Jun 6		Tour de Cure	0.8
Jun 6		Concert	0.8
Jun 7		Concert	0.4
Jun 7		Outdoor Church Service/LHB	0.5
Jun 8		Concert	0.3
Jun 9		Concert	0.3
Jun 10		Concert	0.4
Jun 11		Concert	0.5

## Table 2: Special event counts for 2009

(Note: these events occurred at times that were specifically not sampled to avoid double-counting)

Agency/Park	Date	Event	Visits (1,000s)
<b>MINNEAPOLIS PARK &amp; RECREATION BOARD: <i>continued</i></b>			
<b>Minneapolis Chain of Lakes RP, continued</b>			
	Jun 12	Concert	0.7
	Jun 13	Concert	0.8
	Jun 14	Concert	0.5
	Jun 14	Outdoor Church Service/ Lake Harriet Bandshell	0.5
	Jun 15	Concert	0.3
	Jun 16	Concert	0.3
	Jun 17	Concert	0.4
	Jun 18	Concert	0.5
	Jun 19	Concert	0.8
	Jun 20	Concert	0.8
	Jun 21	Outdoor Church Service/ Lake Harriet Bandshell	0.5
	Jun 21	Walk for Lupus - Lake Calhoun	0.4
	Jun 21	Concert	0.4
	Jun 22	Concert	0.3
	Jun 23	Concert	0.4
	Jun 24	Concert	0.5
	Jun 25	Concert	0.7
	Jun 26	Concert	0.8
	Jun 27	Concert	0.5
	Jun 27	Tri-Loppet (split Chain of Lakes RP, Theodore Wirth RP)	0.2
	Jun 28	Outdoor Church Service -	0.5
	Jun 28	Concert	0.3
	Jun 30	Concert	0.3
	Jul 1	Concert	0.4
	Jul 2	Concert	0.5
	Jul 3	Concert	0.4
	Jul 4	Concert	1.5
	Jul 5	Outdoor Church Service/LHB	0.3
	Jul 6	Concert	0.3
	Jul 7	Concert	0.4
	Jul 8	Concert	0.4
	Jul 9	Concert	0.5
	Jul 10	Concert	0.7
	Jul 11	Concert	1.5
	Jul 11	Triathlon (split Chain of Lakes RP, Minn Pkwy, Nokomis RP, Miss Gorge-Mpls; Miss Gorge-St Paul)	0.5
	Jul 12	Outdoor Church Service/LHB	0.5
	Jul 12	Concert	1.0
	Jul 13	Concert	0.4
	Jul 15	Concert	0.4
	Jul 16	Concert	0.5
	Jul 17	Concert	1.5
	Jul 18	Concert	1.5
	Jul 18 - 19	Aquatennial Beach Bash	5.3
	Jul 19	Outdoor Church Service/LHB	0.5
	Jul 19	Concert	0.6
	Jul 20	Concert	0.3
	Jul 21	Concert	0.4
	Jul 22	Concert	0.5
	Jul 23	Concert	0.8
	Jul 24	Concert	0.8
	Jul 25	Concert	1.0
	Jul 26	Outdoor Church Services	0.5
	Jul 26	Concert	1.5
	Jul 27	Concert	0.3
	Jul 28	Concert	0.4
	Jul 30	Concert	0.5
	Jul 31	Concert	0.7
	Aug 1	Concert	0.8
	Aug 2	Outdoor Church Service / LHB	0.5
	Aug 2	Concert	0.5
	Aug 2	Hennepin - Lake Classic	0.7
	Aug 3	Concert	0.3
	Aug 4	Concert	0.4
	Aug 5	Concert	0.5
	Aug 6	Concert	0.8
	Aug 7	Concert	0.8
	Aug 8	Concert	0.8
	Aug 8	Hagen Financial Advantage 5K Fun Run / Walk	0.3
	Aug 9	Concert	0.5
	Aug 9	Outdoor Church Service	0.5
	Aug 10	Concert	0.3
	Aug 11	Concert	0.3
	Aug 12	Concert	0.4

## Table 2: Special event counts for 2009

(Note: these events occurred at times that were specifically not sampled to avoid double-counting)

Agency/Park	Date	Event	Visits (1,000s)
<b>MINNEAPOLIS PARK &amp; RECREATION BOARD: <i>continued</i></b>			
<b>Minneapolis Chain of Lakes RP, continued</b>			
	Aug 13	Concert	0.5
	Aug 14	Concert	0.8
	Aug 15	Concert	0.8
	Aug 16	Concert	0.4
	Aug 16	Outdoor Church Service / LHB	0.5
	Aug 17	Concert	0.3
	Aug 18	Concert	0.3
	Aug 19	Concert	0.4
	Aug 20	Concert	0.5
	Aug 21	Concert	0.8
	Aug 21	TC Breast Cancer 3-day (split Chain of Lakes, Miss Gorge-Mpls; Miss Gorge-St Paul)	1.0
	Aug 22	Back in the Game 5 & 10K - Lake Harriet	2.5
	Aug 22	Concert	0.8
	Aug 23	Outdoor Church Service	0.5
	Aug 23	Concert	0.7
	Aug 24	Concert	0.3
	Aug 25	Concert	0.3
	Aug 26	Concert	0.4
	Aug 27	Picnic	0.5
	Aug 27	Concert	0.5
	Aug 28	Concert	0.7
	Aug 29	Concert	0.8
	Aug 29	100 Miles for 100 Mentors	0.3
	Aug 30	Outdoor Church Service - LHB	0.5
	Aug 30	Concert	0.5
	Aug 31	Concert	0.3
	Sep 1	Concert	0.3
	Sep 2	Concert	0.4
	Sep 3	Concert	0.5
	Sep 6	Outdoor Church Service - LHB	0.5
	Sep 11	Concert	0.8
	Sep 12	TC Fun and Run Walk - Lake Harriet	1.0
	Sep 11-12	MS Challenge (split Central Miss RP, Miss Gorge RP, Chain of Lakes RP, Minn Pkwy RT, Nokomis RP, Minnehaha RP)	0.1
	Sep 13	C of L 25 K & Harriet Bandshell 5K - Lakes Harriet and Calhoun	1.7
	Sep 19	Annunciation School Marathon	0.3
	Sep 26	Made in the Shade walk - Lake Calhoun	0.6
	Sep 26	Walk to defeat ALS/Harriet	2.0
	Sep 27	Vision Walk - Lake Harriet	0.5
	Sep 20	Minneapolis Tour (split Central Miss, Chain of Lakes, Minnehaha RT, Minnehaha RP, Miss Gorge, Nokomis- Hiawatha, Theodore Wirth, Wirth Memorial)	0.4
	Oct 3	Carondelet Marathon - Lake Harriet	0.5
	Oct 4	Twin Cities Marathon & TC 10 (1/5 each: Miss Gorge-Mpls; Miss Gorge-SP; Chain of Lakes; Minn Pkwy; Nokomis)	45.0
	Oct 31	Team Ortho Monster Dash & Half Marathon - Lake Harriet	5.5
	Nov 26	Drumstick Dash - Lake Harriet	0.9
	Dec 5	Reindeer Run	4.2
<b>Minnehaha Parkway RT</b>		<b>TOTAL</b>	<b>46.4</b>
	Jul 11	Triathlon (split Chain of Lakes RP, Minn Pkwy, Nokomis RP, Miss Gorge-Mpls; Miss Gorge-St Paul)	0.5
	Sep 11-12	MS Challenge (split Central Miss RP, Miss Gorge RP, Chain of Lakes RP, Minn Pkwy RT, Nokomis RP, Minnehaha RP)	0.1
	Sep 20	Minneapolis Tour (split Central Miss, Chain of Lakes, Minnehaha RT, Minnehaha RP, Miss Gorge, Nokomis- Hiawatha, Theodore Wirth, Wirth Memorial)	0.5
	Sep 26	Dusk2Dawn	0.3
	Oct 4	Twin Cities Marathon & TC 10 (1/5 each: Miss Gorge-Mpls; Miss Gorge-SP; Chain of Lakes; Minn Pkwy; Nokomis)	45.0
<b>Minnehaha RP</b>		<b>TOTAL</b>	<b>21.4</b>
	Apr 25	Get in Gear Race (split Minn RP/Miss Gorge RP/Gorge RP-SP)	3.1
	May 3	Walk MS	4.0
	May 17	AIDS Walk (split Minn RP, Miss Gorge RP-M, Miss Gorge RP-SP)	2.5
	Jun 7	Outdoor Church Service - Bethel Lutheran Church - Falls Bandstand	0.3
	Jun 14	Outdoor Church Service - Hope Lutheran Church - Falls Bandstand	0.3
	Jun 20	TC World Refugee Day - ALL	2.4
	Jun 21	Outdoor Church Service - Jacob's Well - Falls Bandstand	0.3
	Jun 28	Svenskarnas	1.5
	Jul 5	Lions Band Performance - Falls Bandstand	0.5
	Jul 5	Picnic	0.4
	Jul 5	Picnic	0.4

## Table 2: Special event counts for 2009

(Note: these events occurred at times that were specifically not sampled to avoid double-counting)

Agency/Park	Date	Event	Visits (1,000s)
<b>MINNEAPOLIS PARK &amp; RECREATION BOARD: continued</b>			
<b>Minnehaha RP, continued</b>			
	Jul 12	Norway Days	1.0
	Jul 19	Outdoor Church Service - 1st Evangelical Free - Falls Bandstand	0.3
	Jul 19	Picnic	0.3
	Jul 26	Outdoor Church Service - Jacob's Well - Falls Bandstand	0.3
	Aug 2	Outdoor Church Service - Falls Bandstand	0.3
	Aug 14	Picnic	0.3
	Sep 11-12	MS Challenge (split Central Miss RP, Miss Gorge RP, Chain of Lakes RP, Minn Pkwy RT, Nokomis RP, Minnehaha RP)	0.1
	Sep 12	Picnic	0.3
	Sep 13	Picnic	0.3
	Sep 20	Minneapolis Tour (split Central Miss, Chain of Lakes, Minnehaha RT, Minnehaha RP, Miss Gorge, Nokomis- Hiawatha, Theodore Wirth, Wirth Memorial)	0.5
	Sep 26	NAMI Walk	0.5
	Sep 27	Women Run the Cities	1.5
	Oct 3	Marathon for Non Public Ed (split Minnehaha Park; Miss Gorge-Mpls; Miss Gorge-St Paul)	0.2
<b>Mississippi Gorge RP</b>			<b>70.8</b>
	Jan 1	Polar Dash	0.7
	Apr 25	Get in Gear Race (split Minn RP/Miss Gorge RP/Gorge RP-SP)	3.1
	May 17	AIDS Walk (split Minnehaha RP, Miss Gorge RP-M, Miss Gorge RP-SP)	2.5
	May 31	Downtown 1/2 Marathon (split Central Miss RP, Miss Gorge )	2.0
	Jul 11	Triathlon (split Chain of Lakes RP, Minn Pkwy, Nokomis RP, Miss Gorge-Mpls;	0.5
	Jun 21	MMAF Run & Walk - W River Parkway	1.2
	Jun 22	5K Walk Run (split Central Miss RP, Miss Gorge RP)	0.2
	Jul 11	Triathlon (split Chain of Lakes RP, Minn Pkwy, Nokomis RP, Miss Gorge-Mpls; Miss Gorge-St Paul)	0.5
	Jul 25	Mississippi River Challenge	1.5
	Aug 21	TC Breast Cancer 3-day (split Chain of Lakes, Miss Gorge-Mpls; Miss Gorge-St Paul)	1.0
	Aug 23	Outdoor Church Svc - Nokomis Heights - Falls Bandstand	0.3
	Sep 11 -12	MS Challenge (split Central Miss RP, Miss Gorge RP, Chain of Lakes RP, Minn	0.1
	Sep 20	Minneapolis Tour (split Central Miss, Chain of Lakes, Minnehaha RT, Minnehaha RP, Miss Gorge, Nokomis- Hiawatha, Theodore Wirth, Wirth Memorial)	0.5
	Sep 19	Special Olympics 5K	1.5
	Oct 3	Marathon for Non Public Ed (split Minnehaha Park; Miss Gorge-Mpls; Miss Gorge-St Paul)	0.2
	Oct 4	Twin Cities Marathon & TC 10 (1/5 each: Miss Gorge-Mpls; Miss Gorge-SP; Chain of Lakes; Minn Pkwy; Nokomis)	45.0
	Nov 26	Turkey Day 5K	10.0
<b>Northeast Diagonal RT</b>			<b>None</b>
<b>Nokomis-Hiawatha RP</b>			<b>91.4</b>
	Jan 21-25	Pond Hockey	20.0
	May 16	Adopt Walk	0.3
	May 2	Brian Craft 5K / Nokomis	0.5
	Jun 6	24hour FANS Run	0.4
	Jun 6	Lymphoma Walk	0.5
	Jul 18	MiracleKids Triathlon	20.0
	Jul 11	Triathlon (split Chain of Lakes RP, Minn Pkwy, Nokomis RP, Miss Gorge-Mpls; Miss Gorge-St Paul)	0.5
	Jul 25	5K/10K - Boston Scientific Heart of Summer	1.3
	Sep 11-12	MS Challenge (split Central Miss RP, Miss Gorge RP, Chain of Lakes RP, Minn Pkwy RT, Nokomis RP, Minnehaha RP)	0.1
	Sep 20	Minneapolis Tour (split Central Miss, Chain of Lakes, Minnehaha RT, Minnehaha RP, Miss Gorge, Nokomis- Hiawatha, Theodore Wirth, Wirth Memorial)	0.5
	Sep 19	Bolder Options Bolder Dash	0.5
	Sep 26	Dusk2Dawn	0.3
	Oct 4	Twin Cities Marathon & TC 10 (1/5 each: Miss Gorge-Mpls; Miss Gorge-SP; Chain of Lakes; Minn Pkwy; Nokomis)	45.0
	Oct 10	Making Strides Against Breast Cancer Walk	1.5
<b>North Mississippi RP</b>			<b>1.8</b>
	Jun 5	Picnic	0.5
	Jun 13	Accessibility, Inc. - Rollin Along the River	0.5
	Sep 13	Picnic	0.8
<b>Ridgeway Parkway RT</b>			<b>None</b>
<b>St. Anthony Parkway RT</b>			<b>None</b>

## Table 2: Special event counts for 2009

(Note: these events occurred at times that were specifically not sampled to avoid double-counting)

Agency/Park	Date	Event	Visits (1,000s)
<b>MINNEAPOLIS PARK &amp; RECREATION BOARD: <i>continued</i></b>			
<b>Theodore Wirth RP</b>		<b>TOTAL</b>	<b>3.5</b>
	Jan 30 to Feb 1	Loppet (split Chain of Lakes and Theodore Wirth RP)	0.5
	May 2	Walk for Animals (Split between Wirth Park and Wirth Parkway)	1.5
	Jun 27	Tri-Loppet (split Chain of Lakes RP, Theodore Wirth RP)	0.2
	Aug 1	5K Your Way	0.5
	Sep 20	Minneapolis Tour (split Central Miss, Chain of Lakes, Minnehaha RT, Minnehaha	0.5
	Sep 19	Trail Loppet	0.3
<b>Victory Memorial (Wirth) Parkway RT</b>		<b>TOTAL</b>	<b>2.0</b>
	May 2	Walk for Animals (Split between Wirth Park and Wirth Parkway)	1.5
	Sep 20	Minneapolis Tour (split Central Miss, Chain of Lakes, Minnehaha RT, Minnehaha RP, Miss Gorge, Nokomis- Hiawatha, Theodore Wirth, Wirth Memorial)	0.5
<b>RAMSEY COUNTY:</b>			
<b>Bald Eagle-Otter Lake RP</b>		<b>TOTAL</b>	<b>21.7</b>
	Jun 6	Tri- Fitness - Grandpa's 1/2 marathon	0.5
	Jun 13	Tri Fitness	0.3
	Jul 15	Fishing for Life Shore line fishing contest	0.6
	Oct 3	Muskies LLC Chapter Picnic and Fishing	0.3
	All Year	Tamarack Nature - Formal program attendee (not including informal visits)	20.0
<b>Battle Creek RP</b>		<b>TOTAL</b>	<b>15.2</b>
	May 9	Vu Cheu Picnic	0.4
	May 10	MN Orienteering	0.4
	May 23	Eritrean Community Ctr	0.5
	May 30	Madaroka Day Celebration Kenya Culture Day	0.5
	Jun 6	Houa Lee	0.4
	Jun 7	MN Army National Guard	0.4
	Jun 12	Hmong Culture Center	0.6
	Jun 13	Donatelle Plastic's Company Picnic	0.4
	Jun 14	Hmong Culture Center (Seng Moua)	0.4
	Jun 19	Perez Party	0.3
	Jun 20	Stucci Family Picnic	0.3
	Jun 21	Vang Party	0.5
	Jul 4	Sinclair Party	0.5
	Jul 11	Living World Church	0.5
	Jul 12	Yang Party	0.4
	Jul 19	Mplwood Fire Dept	0.3
	Aug 2	Amalgamated Transit Union	0.6
	Aug 6	St Paul Fire Fighters	0.4
	Aug 8	Lee Hue	0.5
	Aug 15	Jeff Ion	0.3
	Aug 17	UAW Ford Retirees	0.4
	Aug 18	Health East Clinics	0.5
	Aug 22	Plumbers Union #34	0.6
	Aug 23	Pipefitters Local 455	0.4
	Aug 30	Dan Yang Lee	0.6
	Sep 2	Tri metro Conferenc	0.3
	Sep 3	Tri metro Conferenc	0.3
	Sep 5	Private party Coreas	0.3
	Sep 12	Northern Light Greghound	0.4
	Sep 13	United Church of Unitarian	0.4
	Sep 20	Oseba Party	0.3
	Sep 27	MN Street Rod Association	0.6
	Oct 20	DeLaSalle High School Cross - Country Track Meet (Tri Metro Conf)	0.5
	Oct 26	Math and Science Academy Track meet	0.4
	Oct 31	St. Paul Nordic Ski - Land Race	0.3
	Nov 22	MN Orienteering	0.3
<b>Birch Lake RT</b>		<b>None</b>	<b>-</b>
<b>Bruce Vento RT</b>		<b>None</b>	<b>-</b>
<b>Grass-Vadnais-Snail Lake RP</b>		<b>TOTAL</b>	<b>9.5</b>
	Apr 25	Paws for People Walk	0.7
	Jun 6	Lee Family Reunion	0.4
	Jun 23	North Heights Baptism (group)	0.3
	July 3rd	Hansen Wedding	0.3
	Jul 4	Twin Cities Bike Club	0.4
	Jul 11	Hmong Baptist Church	0.3
	Jul 18	Lahood Family Picnic	0.3
	Jul 19	River of Light Church	0.3
	Jul 22	Boston Scientific	0.3
	Jul 25	Vang family	0.4
	Jul 28	PTC Company picnic	0.3

## Table 2: Special event counts for 2009

(Note: these events occurred at times that were specifically not sampled to avoid double-counting)

Agency/Park	Date	Event	Visits (1,000s)
<b>RAMSEY COUNTY: continued</b>			
<b>Grass-Vadnais-Snail Lake RP, continued</b>			
	Jul 29	DS & B Ltd	0.3
	Aug 4	Boston Scientific	0.3
	Aug 15	Final Stretch Race	0.4
	Aug 18	Boston Scientific	0.3
	Aug 22	Breast Cancer 3-Day (split Mississippi Gorge-St Paul, Grass Vadnais Snail-- Ramsey Co)	1.5
	Aug 22	Silverta Walk (Sucker Park)	0.5
	Aug 23	TSAB Foundation Tou Cha	0.4
	Sep 5	Twin Cities Bike Club	0.3
	Sep 12	Meridian	0.3
	Sep 19	Fun Run/Picnic Golden Retrievers	0.4
	Sep 19	Tapestry	0.3
	Sep 23	Turtle Lake El	0.3
	Sep 24	DSI Company Picnic	0.3
<b>Highway 96 RT</b>		<b>None</b>	-
<b>Keller RP</b>		<b>None</b>	-
<b>Long Lake RP</b>		<b>TOTAL</b>	<b>20.5</b>
	Feb 7	Snow Shoe Race	0.6
	Feb 8	New Brighton Sportsmen Ice Fishing Contest	0.5
	April 1 & 2	Eastern Technology Emission Testing	0.3
	May 23	Xiong Ma	0.5
	May 24	Kabo Yang	0.4
	May 29	Irondale Sr Class Picnic	0.4
	May 30	Cheng Vang	0.3
	May 31	Fridley Amal Muhammad Khan	0.6
	Jun 2	Hmong College prep	0.5
	Jun 5	NB Triathlon	0.5
	Jun 6	Vacation Sports - NB Triathlon	0.5
	Jun 7	Vu family picnic	0.3
	Jun 8	Mpls postal workers union	0.5
	Jun 10	Bethlehem Baptist Church	0.3
	Jun 14	Yang family picnic	0.3
	Jun 16	Cub Scout Rodio	0.3
	Jun 27	Vaj Soob Picnic	0.5
	Jul 3	Anjum Afshan	0.3
	Jul 4	Lee Xay Xue picnic	0.6
	Jul 6	Tibetan Am Foundation	0.5
	Jul 11	Ranallo Picnic	0.4
	Jul 12	Yang picnic	0.4
	Jul 14	Boston Scientific	0.4
	Jul 16	TC North Chamber of C	0.5
	Jul 18	Lee Toua	0.5
	Jul 19	Khang Seng Family	0.4
	Jul 21	Mintahoe	0.5
	Jul 23	General Mills	0.5
	Jul 25	Xiong Choua	0.4
	Jul 26	Collova Family Reunion	0.4
	Jul 30	Boston Scientific	0.5
	Aug 3	Boston Scientific	0.5
	Aug 7	New Brighton Stockyard Days	0.4
	Aug 8	New Brighton Stockyard Days	1.0
	Aug 9	New Brighton Stockyard Days	0.5
	Aug 16	Gcc Union Picnic	0.3
	Aug 18	Mintahoe	0.3
	Aug 29	Yang Ue	0.5
	Aug 30	Mt Carmel Lutheran Church	0.3
	Sep 17	Wells Fargo Picnic	0.3
	Sep 18	MN Street Rod Assoc picnic	0.6
	Sep 19	Korean Vet Association	0.6
	Sep 20	Miike Miller	0.3
	Sep 24	Bell Lumber	0.3
	Sep 26	Dianne Haus	0.5
	October 17 & 18	Fall Stockyard Days New Brighton	0.5
<b>Rice Creek North RT</b>		<b>None</b>	-
<b>Rice Creek West RT</b>		<b>None</b>	-
<b>Tony Schmidt RP</b>		<b>TOTAL</b>	<b>0.4</b>
	Jun 15 - Aug 21	YMCA Camp	0.4
<b>Trout Brook RT</b>		<b>None</b>	-

## Table 2: Special event counts for 2009

(Note: these events occurred at times that were specifically not sampled to avoid double-counting)

Agency/Park	Date	Event	Visits (1,000s)
<b>CITY OF ST. PAUL:</b>			
<b>Bruce Vento RT</b>			<b>11.4</b>
	Jan 26-28	Winter Carnival Treasure Hunt (5,000 on 1/28 and 2,500 on 1/26 and 1/27	10.0
	Sep 13	St. Paul Classic Bike Tour (1/7 each: Hidden Falls, Indian Mounds, Como; Phalen; Miss Gorge -SP, Sam Morgan RT, Vento RT)	1.0
	Apr 14	Spring Parks Cleanup total of 400 divided by 1/9 = (listed only here for all sites)	0.4
<b>Cherokee Heights RP</b>			<b>3.9</b>
	May 30	KMOJ Radio	0.7
	Jul 4	Parks and Recreation 4th of July Event	0.7
	Jul 2-5	Taste of MN - Fireworks (500 on 2,3 and 5 and 1,000 on 4th)	2.5
<b>Como RP, Zoo &amp; Conservatory SRF</b>			<b>396.0</b>
	All Year	Como Education events/classes	20.4
	Winter	Como Downhill Ski (Enterprise facility) (cc ski meets and lessons)	1.3
	Jan 17-19	Rainforest Revel	5.1
	Jan 24	Winter Carnival Orchid Show	1.9
	Jan 25	Winter Carnival Orchid Show	2.5
	Jan 30-31	Winter Flower Show	1.0
	Feb 13-16	Woo at the Zoo	22.0
	Feb 28	MN Parent Camp Fair	4.8
	Mar 6-7	Daniel Cox Photo Exhibit Opening	7.3
	Mar 7	Medicine for Sick Children Foundation	3.0
	Mar 21-22	Spring Fling	4.0
	Mar 21-22	Spring Flower Show Opening	12.5
	Apr 22-26	Party for the Planet	20.7
	May 2-3	Summer Flower Show Opening	14.6
	May 9-10	Bonsai Show (over two days)	16.1
	May 12	St. Paul Police Patrol Picnic	1.7
	May 16	New Life Family Services Walk/Run	0.4
	May 16	Twin Cities Marathon Kid's Marathon	1.5
	May 16-17	Plant Conservation Day	13.2
	May 16	Vintage Foreign Marque Clubs	3.0
	May 17	Walmart - Kaspszak	0.5
	May 23	Gingerbread Craft Show	1.0
	May 24	Gingerbread Craft Show	1.0
	May 25	Gingerbread Craft Show	1.0
	May 25	Roseville Community Band	0.5
	Jun 1	Prairie Seeds Academy	0.5
	Jun 2	Applebee's - Myers	0.4
	Jun 2	Q.M.C. Pride Concert	0.7
	Jun 3	South High School	0.4
	Jun 7	American Lung Assoc of MN	0.5
	Jun 8	Noble Academy	0.4
	Jun 10	Community School of Excellence	0.3
	Jun 11	Dakota Communities Inc picnic	0.6
	Jun 8	Minneapolis Police Swing Band	0.3
	Jun 12	Corey Anderson Family Reunion	0.3
	Jun 18	MELSA Summer Reading	5.8
	Jun 13	Urban Partnership and Community Development Walk/Run	0.5
	Jun 14	Pops Ensemble Concert	0.3
	Jun 17	Medalist Concert Band	0.3
	Jun 16	Northstar Barbershop Chorus	0.5
	Jun 18	Classic Big Band	0.3
	Jun 20-21	Blooming Butterflies Opening	28.1
	Jun 21	Twin Cities Pride - Tretter	0.5
	Jun 21	Pops Ensemble Concert	0.3
	Jun 23	Como Community Night	6.0
	Jun 24	Northland Insurance Company Picnic	0.4
	Jun 28	Pops Ensemble Concert	0.3
	Jul 1	Whistlepigs String Band	0.3
	Jul 3	Hmong Freedom Celebration - Lao Family of MN setup	2.0
	Jul 5	Pops Ensemble Concert	0.3
	Jul 4	United We Stand Concert	0.5
	Jul 4	Hmong Freedom Celebration - Lao Family of MN event	40.0
	Jul 5	Hmong Freedom Celebration - Lao Family of MN event	40.0
	Jul 6	Minnesota Sinfonia Concert	0.7
	Jul 8	RESOURCE, Inc.	0.3
	Jul 9	Rosetown Playhouse	0.8
	Jul 10	Rosetown Playhouse	0.8
	Jul 11	Rosetown Playhouse	0.8
	Jul 12	Pops Ensemble Concert	0.3
	Jul 14	Northstar Barbershop Chorus	0.6
	Jul 16	South Metro Human Services	0.3
	Jul 17	Preferred One	0.3
	Jul 16	Rosetown Playhouse	0.8
	Jul 17	Rosetown Playhouse	0.8

## Table 2: Special event counts for 2009

(Note: these events occurred at times that were specifically not sampled to avoid double-counting)

Agency/Park	Date	Event	Visits (1,000s)
<b>CITY OF ST. PAUL: continued</b>			
<b>Como RP, Zoo &amp; Conservatory SRF continued</b>			
	Jul 18	Rosetown Playhouse	0.9
	Jul 19	Pops Ensemble Concert	0.3
	Jul 20	Rein in Sarcoma	0.6
	Jul 21	Greater Twin Cities Youth Symphonies	0.8
	Jul 22	South Washington County Community Band	0.3
	Jul 22	Thomson Reuters - Kenealy	0.3
	Jul 23	Hillcrest Community Theater	0.5
	Jul 23	Sunset Affair	0.5
	Jul 24	Hillcrest Community Theater	0.5
	Jul 25	Hillcrest Community Theater	0.4
	Jul 24	Crossroads Elementary Picnic	0.3
	Jul 26	Lex-Ham Community Band	0.4
	Jul 26	Como Pops Ensemble	0.3
	Jul 30	Hillcrest Community Theater	0.4
	Jul 31	Hillcrest Community Theater	0.4
	Aug 1	Hillcrest Community Theater	0.4
	Aug 2	Pops Ensemble Concert	0.3
	Aug 2	John Phillips Sousa Memorial Band	0.7
	Aug 3	South Side Big Band	0.3
	Aug 4	Twin Cities Show Chorus	0.5
	Aug 5	Minnesota State Band	0.5
	Aug 6	Swingbeat Big Band	0.4
	Aug 9	Pops Ensemble Concert	0.3
	Aug 11	City of Saint Paul Employee Picnic	0.8
	Aug 12	Minnesota State Band	0.5
	Aug 16	Japanese Lantern Lighting Festival	5.8
	Aug 18	Northstar Barbershop Chorus	0.5
	Aug 22	Kaposia	0.4
	Aug 23	Como Park Lutheran Church	0.3
	Aug 23	Moonlight Serenaders	0.5
	Aug 26	Cretin-Derham Hall Picnic	0.3
	Aug 28	Celebration Brass	0.3
	Aug 30	Pops Ensemble Concert Benefit Concert	0.4
	Sep 12-13	African Predator Conservation	9.5
	Sep 13	St. Paul Classic Bike Tour (1/7 each: Hidden Falls, Indian Mounds, Como; Phalen; Miss Gorge -SP, Sam Morgan RT, Vento RT)	1.0
	Sep 19	Free to be Green	11.5
	Sep 20	Down Syndrome Association	5.5
	Sep 26	Brain Injury Association Walk	1.0
	Sep 27	AFSP Walk/Run	0.4
	Oct 3	Camp Odayin	0.5
	Oct 4	American Foundation For Suicide Walk/Run	0.4
	Oct 4	Boy Scouts	0.3
	Oct 4	Loaves And Fishes	0.6
	Oct 10	MN Parent Education Resource Fair	2.1
	Oct 10-11	Wolf Awareness	4.4
	Oct 18	The Center For Grief, Loss and Transition Walk/Run	0.3
	Oct 17-18, 23-25	Zoo Boo (5 days)	16.0
	Oct 24	Concordia University Walk/Run	0.3
	Nov 8	Wedding Showcase Open House	0.3
	Nov 5-15	Ikebana Show	10.9
	Nov 14-15	Orangutan Awareness	2.9
	Nov 22	The Sporting Life Walk/Run	0.5
	Nov 26	Charities Challenge	0.7
	Dec 3	Bouquets Wine Tasting	0.4
	Dec 3-4	Winter Flower Show Opening	2.1
	Dec 4-5	Craft Show	0.5
	Dec 3-31	Last Polaroid Show Photo	4.8
	Dec 31	Family New Year's Day	1.5
<b>Hidden Falls-Crosby Farm RP</b>			
	May 30	Grodahl wedding	0.3
	Jun 12	Bio-blitz	0.5
	Aug 22	Anderson Race Management Walk/Run	3.0
	Sep 13	St. Paul Classic Bike Tour (1/7 each: Hidden Falls, Indian Mounds, Como; Phalen; Miss Gorge -SP, Sam Morgan RT, Vento RT)	1.0
	Oct 24-31	BareBones Performance	7.5



## Table 2: Special event counts for 2009

(Note: these events occurred at times that were specifically not sampled to avoid double-counting)

Agency/Park	Date	Event	Visits (1,000s)
<b>CITY OF ST. PAUL: continued</b>			
<b>Indian Mounds RP</b>			<b>TOTAL</b>
			<b>8.9</b>
	May 16	Tree climbing championship	0.5
	Jul 2-5	Taste of MN - Fireworks (2,500 on 7/4 and 750 on 7/2, 3 and 5	3.8
	Aug 22	Breast Cancer 3-Day (split Mississippi Gorge-St Paul, Grass Vadnais Snail-- Ramsey Co)	1.6
	Aug 23	NPT Breast Cancer 3-Day	1.6
	Sep 13	St. Paul Classic Bike Tour (7,000 = 1/7 each: Hidden Falls, Indian Mounds, Como; Phalen; Miss Gorge -SP, Sam Morgan RT, Vento RT)	1.0
	Sep 25	The Ain Dah Yung Center Picnic	0.4
<b>Lilydale-Harriet Island RP</b>			<b>TOTAL</b>
			<b>346.9</b>
	All year	Padelford Park Excursions	82.0
	Feb 7	Pay It Forward Event	0.4
	Apr 1 - Oct 31	Fossil Hunting Groups	8.1
	Apr 2	Award Ceremony	0.3
	Apr 4	Wedding	0.4
	Apr 20	Wishes for the Sky	0.5
	Apr 26	American Heart Association Walk	30.0
	May 2	Anderson Race Management Walk/Run	0.3
	May 2	High School Dance	0.3
	May 15	Boat Christening	1.0
	May 28	Wellstone Elementary Field Sports Day	0.5
	May 31	Wedding	0.3
	Jun 6	St. Paul Chamber Run/Walk	0.4
	Jun 6	ADA Bike Ride	0.4
	Jun 6	Raspberry Island Wedding	0.4
	Jun 10	Bike Trials	2.0
	Jun 11	Graduation Ceremony	0.3
	Jun 14	Wedding	0.3
	Jun 27	Time to Fly Charity Run	3.0
	Jul 2-5	Taste of Minnesota	75.0
	Jul 4	Charities Challenge Walk	0.5
	Jul 18	Wedding	0.3
	Jul 26	Friends of the Mississippi River	0.4
	Aug 2	Billy Graham Prayer Service	0.8
	Aug 4	Company Picnic	0.3
	Aug 7-9	Irish Fair	100.0
	Aug 12	Builders Club Event	3.0
	Aug 14	Vega Productions	1.0
	Aug 16	Billy Graham	30.0
	Sep 16	Merrick Community Services Fundraiser	0.3
	Sep 20	Wedding	0.4
	Sep 22	Award Ceremony	0.3
	Oct 3	Wedding	0.3
	Oct 10	Humboldt Senior HS Training	0.6
	Oct 15	Anniversary Party	0.3
	Oct 16	Wedding	0.3
	Oct 18	Women's Police Run	0.3
	Oct 24	Halloween Hustle Run	0.5
	Nov 28	Cantus	0.5
	Nov 28 - Dec 14	Actor's Theater - Christmas Carol	1.0
<b>Mississippi Gorge RP</b>			<b>TOTAL</b>
			<b>59.9</b>
	Apr 25	Get In Gear 10K & 2K Run/Walk (split with MPRB--Minnehaha RP & Miss Gorge Mpls & Miss Gorge SP)	3.1
	May 3	National MS Society Walk	3.5
	May 17	AIDS Walk (split Minnehaha RP, Miss Gorge RP-M, Miss Gorge RP-SP)	2.5
	Jul 11	Triathlon (split Chain of Lakes RP, Minn Pkwy, Nokomis RP, Miss Gorge-Mpls; Miss Gorge-St Paul)	0.5
	Aug 21	TC Breast Cancer 3-day (split Chain of Lakes, Miss Gorge-Mpls; Miss Gorge-St Paul)	1.0
	Aug 22	SRO Productions Inc Bike Event	1.1
	Sept. 13	St. Paul Classic Bike Tour (7,000 = 1/7 each: Hidden Falls, Indian Mounds, Como; Phalen; Miss Gorge -SP, Sam Morgan RT, Vento RT)	1.0
	Sep 27	MN Commercial Real Estate Women	2.0
	Oct 3	Marathon for Non Public Ed (split Minnehaha Park; Miss Gorge-Mpls; Miss Gorge-St Paul)	0.2
	Oct 6	Twin Cities Marathon & TC 10 (1/5 each: Miss Gorge-Mpls; Miss Gorge-St Paul; Chain of Lakes; Minn Pkwy; Nokomis)	45.0

## Table 2: Special event counts for 2009

(Note: these events occurred at times that were specifically not sampled to avoid double-counting)

Agency/Park	Date	Event	Visits (1,000s)
<b>CITY OF ST. PAUL: continued</b>			
<b>Phalen RP</b>			<b>72.7</b>
	Apr 18	Final Stretch, Inc.	0.5
	Apr 26	U of M Regatta Event - Lynn Waldorf	5.0
	Apr 26	March of Dimes Walk	0.6
	May 2	BDSRA Walk/Run	0.3
	May 16	Ramsey-Washington Metro Watershed	1.5
	May 17	Solar Regatta	0.3
	May 30	Tuberous Sclerosis Walk/Run	0.5
	Jun 13	Local #323 Picnic	0.5
	Jun 17	Merrill Corporation	0.4
	Jun 20	Anderson Race Walk/Run	0.3
	Jun 25	Music in the Park Concert - MN Sinfonia	0.7
	Jun 27	Ingram picnic	0.4
	Jul 9	Thursday Night Live - East Side Arts Council	0.6
	Jul 11	Dragon Festival	4.0
	Jul 12	Dragon Festival	4.0
	Aug 8	IBEW #110	0.3
	Aug 1	Carpenters Local 87 - Beedle	0.4
	Jul 25	Paul Stoehr - Union Picnic	0.7
	Aug 13	Epilepsy Foundation of MN Walk	0.8
	Aug 15	Millwright Local 548	0.3
	Aug 23	Vacation Sports Triathlon	1.0
	Aug 22	Wedding	0.3
	Sep 13	St. Paul Classic Bike Tour (7,000 = 1/7 each: Hidden Falls, Indian Mounds, Como; Phalen; Miss Gorge -SP, Sam Morgan RT, Vento RT)	1.0
	Sep 13	India Assoc of MN Festival	2.0
	Sep 19	Sharing Life/The Laura Newmann Foundation Walk	0.5
	Sep 12	Vibha Walk	0.3
	Sep 26	Hearing and Service Dogs of MN	0.3
	Sep 26	Ethiopian Festival	2.0
	Sep 27	MMRF	0.8
	Oct 3	Leukemia & Lymphoma Society	2.5
	Nov 25 - Dec 31	Holiday Lights in the Park	40.0
<b>Samuel Morgan RT</b>			<b>1.0</b>
	Sep 13	St. Paul Classic Bike Tour (7,000 = 1/7 each: Hidden Falls, Indian Mounds, Como; Phalen; Miss Gorge -SP, Sam Morgan RT, Vento RT)	1.0
<b>SCOTT COUNTY:</b>			
<b>Cedar Lake Farm RP</b>			<b>0.5</b>
	Jun 13	Grand Opening	0.5
<b>Scott County RT</b>			<b>None</b>
<b>THREE RIVERS - SCOTT COUNTY:</b>			
<b>Cleary Lake RP</b>			<b>1.8</b>
	Winter	Snowmobile trail use	1.5
	Aug 13	Gear Running Event	0.3
<b>Murphy-Hanrehan PR</b>			<b>1.2</b>
	Winter	Snowmobile trail use	0.8
	Year round	Formal program visits not counted in regular sample and not part of other special events	0.3
	Sch Yr	School groups @ park	0.1
<b>THREE RIVERS PARK DISTRICT:</b>			
<b>Baker PR</b>			<b>18.3</b>
	Winter	Snowmobile trail use	0.9
	Apr 11	Egg Hunt Event	1.7
	Year round	Formal program visits not counted in regular sample and not part of other special events	4.3
	Sch Yr	School groups @ Near-Wilderness Center	11.4
<b>Bassett Creek RT</b>			<b>None</b>
<b>Bryant Lake RP</b>			<b>0.6</b>
	Year round	Formal program visits not counted in regular sample and not part of other special events	0.4
	Sch Yr	School groups @ park	0.2

## Table 2: Special event counts for 2009

(Note: these events occurred at times that were specifically not sampled to avoid double-counting)

Agency/Park	Date	Event	Visits (1,000s)
<b>THREE RIVERS PARK DISTRICT: continued</b>			
<b>Carver PR</b>		<b>TOTAL</b>	<b>22.6</b>
	Winter	Snowmobile trail use	1.4
	Sep 5	Lake Auburn Event	0.5
	Year round	Formal program visits not counted in regular sample and not part of other special events	6.7
	Sch Yr	School groups @ nature center	14.0
<b>Cedar Lake RT</b>		<b>TOTAL</b>	<b>0.2</b>
	Year round	Formal program visits not counted in regular sample and not part of other special events	0.2
<b>Clifton French RP</b>		<b>TOTAL</b>	<b>5.8</b>
	Year round	Formal program visits not counted in regular sample and not part of other special events	1.5
	Sch Yr	School groups @ visitor center	4.3
<b>Coon Rapids Dam RP</b>		<b>TOTAL</b>	<b>6.0</b>
	Year round	Formal program visits not counted in regular sample and not part of other special events	0.1
	Sch Yr	School groups @ visitor center	5.9
<b>Crow-Hassan PR</b>		<b>TOTAL</b>	<b>0.4</b>
	Winter	Snowmobile trail use	0.4
<b>Dakota Rail RT</b>		<b>None</b>	-
<b>Eagle Lake RP</b>		<b>None</b>	-
<b>Elm Creek PR</b>		<b>TOTAL</b>	<b>108.2</b>
	Winter	Snowmobile trail use	1.1
	Winter	Winter Recreation area (manufactured snow area)	81.4
	May 17	Minneapolis Laestadian Church - Picnic	0.3
	Jun 9	ISD 11 Oxbow Creek - Picnic	0.3
	Jun 13	Canadian Pacific RR - Picnic	0.3
	Jun 20	The Gospel Ranch - Picnic	0.3
	Jun 28	IUOE Local 49 - Picnic	0.3
	Jul 11	Bethel World Outreach - Picnic	0.3
	Jul 12	Knights of Columbus - Picnic	0.3
	Jul 26	Maple Grove Evangelical Free Church - Picnic	0.3
	Aug 1	Loram - Picnic	0.5
	Sep 12	Pancreatic Cancer ACT - Picnic	0.4
	Sep 19	Zelle & Hoffman - Picnic	0.3
	Oct 10	Autumn Woods Classic	1.7
	Oct 24	Little Folks Halloween	0.3
	Year round	Formal program visits not counted in regular sample and not part of other special events	9.1
	Sch Yr	School groups @ nature center	11.0
<b>Fish Lake RP</b>		<b>None</b>	<b>0.4</b>
	Year round	Formal program visits not counted in regular sample and not part of other special events	0.2
	Sch Yr	School groups @ park	0.2
<b>Gale Woods</b>		<b>TOTAL</b>	<b>25.8</b>
	Mar 7	Hahn - Reception	0.3
	Apr 4	Spring Into Farming Event	0.7
	Apr 26	Jorgensen - Reception	0.3
	May 16	Farnell - Reception	0.3
	May 23	Gates - Reception	0.3
	Jun 19	Wachter - Reception	0.3
	Jul 18	Stuckmayer - Reception	0.3
	Aug 28	Bandt-Alt - Reception	0.3
	Sep 11	XC Running Meet - Hopkins HS	0.8
	Sep 12	XC Running Meet - Hopkins HS	0.8
	Sep 18	Smith - Reception	0.3
	Sep 22	XC Running Meet - ISD 277 West Tonka HS	0.4
	Sep 25	Jacobson - Reception	0.3
	Oct 2	Wells - Reception	0.3
	Oct 3	Tessman - Reception	0.3
	Oct 10	Jansen - Reception	0.3
	Oct 19	XC Running Meet - O'hara	0.5
	Nov 27	Kelly - Reception	0.3
	Year round	Formal program visits not counted in regular sample and not part of other special events	6.5
	Sch Yr	School groups @ farm	12.3

## Table 2: Special event counts for 2009

(Note: these events occurred at times that were specifically not sampled to avoid double-counting)

Agency/Park	Date	Event	Visits (1,000s)
<b>THREE RIVERS PARK DISTRICT: continued</b>			
<b>Hyland Lake PR</b>		<b>TOTAL</b>	<b>209.2</b>
	Winter	Downhill Ski Area Enterprise Facilities	171.6
	Apr 18	Osia Williams Event - Trail Mix Run	0.9
	May 2	Raptor Release Event	3.3
	Sep 12	Target Book Festival	10.5
	Sep 26	Alzheimers Association Walk	5.5
	Year round	Formal program visits not counted in regular sample and not part of other special events	5.5
	Sch Yr	School groups @ nature center	11.9
<b>Lake Independence RT</b>		<b>None</b>	-
<b>Lake Minnetonka RP</b>		<b>TOTAL</b>	<b>1.8</b>
	Year round	Formal program visits not counted in regular sample and not part of other special events	0.3
	Winter	Snowmobile trail use	1.2
	Sch Yr	School groups @ visitor center	0.3
<b>Lake Minnetonka Islands</b>		<b>None</b>	-
<b>Lake Minnetonka LRT RT</b>		<b>None</b>	-
<b>Lake Rebecca PR</b>		<b>TOTAL</b>	<b>5.0</b>
	Winter	Snowmobile trail use	0.7
	Jun 06	Feyder - Picnic	0.3
	Jun 14	Bellcomb Technology - Picnic	0.3
	Jul 11	Local 539 Pipefitters - Picnic	0.3
	Aug 02	Living Word - Picnic	2.0
	Aug 15	RMS Company - Picnic	0.5
	Aug 22	North Metal Recycling - Picnic	0.3
	Sep 12	US Food Service	0.3
	Year round	Formal program visits not counted in regular sample and not part of other special events	0.1
	Sch Yr	School groups @ park	0.2
<b>Luce Line RT</b>		<b>None</b>	-
<b>Medicine Lake RT</b>		<b>None</b>	-
<b>Minnesota River Bluffs LRT RT</b>		<b>None</b>	-
<b>Noerenberg Gardens SRF</b>		<b>TOTAL</b>	<b>0.3</b>
	Jul 31	David Lee Funeral Home	0.3
<b>North Cedar Lake LRT RT</b>		<b>None</b>	-
<b>North Mississippi RP</b>		<b>TOTAL</b>	<b>7.8</b>
	Year round	Formal program visits not counted in regular sample and not part of other special events	2.1
	Sch Yr	School groups @ nature center	5.7
<b>Northeast Diagonal RT</b>		<b>None</b>	-
<b>Rush Creek RT</b>		<b>None</b>	-
<b>Shingle Creek RT</b>		<b>None</b>	-
<b>Silverwood SRF</b>		<b>TOTAL</b>	<b>5.3</b>
	Sep 26	Grand Opening Celebration	4.1
	Year round	Formal program visits not counted in regular sample and not part of other special events	1.2

## Table 2: Special event counts for 2009

(Note: these events occurred at times that were specifically not sampled to avoid double-counting)

Agency/Park	Date	Event	Visits (1,000s)
<b>WASHINGTON COUNTY:</b>			
<b>Big Marine Park Reserve</b>		<b>None</b>	-
<b>Cottage Grove Ravine RP</b>		<b>TOTAL</b>	<b>3.0</b>
Winter		Snowmobile Use	3.0
<b>Hardwood Creek RT</b>		<b>None</b>	-
<b>Lake Elmo PR</b>		<b>TOTAL</b>	<b>18.7</b>
Winter		Snowmobile use	2.9
May 9		Oakdale Duathlon	0.5
May 12		Macalaster College Picnic	0.3
Jun 8		Museum Magnet Picnic	0.4
Jun 9		John Glen Middle School Picnic	0.3
Jun 25		US Army Corp of Eng Picnic	0.4
Summer		Adventure Day Camps	0.5
Jul 26		Bullock Picnic	0.3
Aug 4		Children's Hospital	0.3
Aug 7		Big Brothers/Sisters Picnic	0.3
Aug 7		Natural Resource Picnic	0.3
Aug 20		MN Rowing Regatta	4.0
Aug 30		Yang Picnic	0.3
Aug 30		Her Picnic	0.3
Sep 12		Bluegrass Festival	3.0
Sep 26		Woodbury GS Picnic	0.3
Sep 6		Bluegrass Festival	1.5
Oct 24		Great Pumkin Chase	0.5
5/23-9/5		Campfire Programs	1.8
School yr.		School groups orienteering	0.6
<b>Pine Point Park RP</b>		<b>TOTAL</b>	<b>1.8</b>
May 9		MS 60/30	1.2
Jun 20		River Valley Riders Ride-a-Thon	0.3
Aug 29		Woodbury Days Bike Ride	0.3
<b>Square Lake SRF</b>		<b>TOTAL</b>	<b>2.8</b>
May 2		Tri Fitness Duathlon	0.3
Jul 25		Lumber Jack Days Race	1.5
Sep 12		Triathlon	0.4
Sep 13		Triathlon	0.6
<b>St. Croix Bluffs RP</b>		<b>TOTAL</b>	<b>3.4</b>
May 17		Apple Blossom Run	0.6
May 23-Sep 5		Campfire Programs	1.5
Sep 10		Cross Country Meet	0.4
Sep 29		Cross Country Meet	0.4
Oct 21		Cross Country Meet	0.5

**Table 3: Comparison of 2008 and 2009 visitation**

<b>Agency</b>	<b>2008</b>	<b>2009</b>	<b># change</b>	<b>% change</b>
	<i>(1,000's)</i>	<i>(1,000's)</i>	<i>(1,000's)</i>	
Anoka	3,280.7	3,280.7	0.0	0.0%
Bloomington	526.8	512.6	(14.2)	-2.7%
Carver	265.0	265.5	0.5	0.2%
Dakota	879.6	929.8	50.2	5.7%
Minneapolis <sup>1</sup>	15,442.4	14,113.0	(1,329.4)	-8.6%
Ramsey	3,286.2	3,057.3	(228.8)	-7.0%
St Paul <sup>2</sup>	6,649.7	7,229.5	579.8	8.7%
Scott County	259.9	255.1	(4.8)	-1.8%
Three Rivers (Hennepin Co.)	6,472.6	6,865.8	393.2	6.1%
Three Rivers (Scott County)	302.0	292.0	(9.9)	-3.3%
Washington <sup>3</sup>	1,158.4	1,261.2	102.8	8.9%
<b>Total</b>	<b>38,523.4</b>	<b>38,062.6</b>	<b>(460.8)</b>	<b>-1.2%</b>

**Notes:**

<sup>1</sup> A significant portion of Mississippi Gorge Regional Park in Minneapolis was closed in 2009 due to construction, which has impacted the visitation estimates. Additionally, the 2008 estimate for regional parks, which is based on an average of 2005-2008 data, included very high numbers of visitors in certain regional facilities in the 2005 counts. The 2009 estimate is based on an average of 2006-2009 data. With the large numbers from 2005 dropping from the calculation, the 2009 estimate has decreased.

<sup>2</sup> The majority of the increase in visitation is from Como Park, Zoo and Conservatory. Since the estimates are based on an average of 4 years of data, the estimates now fully recognize the impact of major capital improvements made at the zoo and conservatory in 2005.

<sup>3</sup> The increase in visitation is primarily attributed to Big Marine Park Reserve, which served as boat launch prior to its grand opening with additional park facilities in 2008.

**Table 4: Comparison of 2008 and 2009 park vs. trail visitation**

	<b>2008</b>	<b>2009</b>	<b># change</b>	<b>% change</b>	<b>% of all visits in 2008</b>
	<i>(1,000's)</i>	<i>(1,000's)</i>	<i>(1,000's)</i>		
Trail Visits <sup>1</sup>	8,264.3	8,238.3	(25.9)	-0.3%	22%
Park/Reserve/SRF Visits	30,259.2	29,824.2	(435.0)	-1.4%	78%
<b>Total Visits</b>	<b>38,523.4</b>	<b>38,062.6</b>	<b>(460.8)</b>	<b>-1.2%</b>	<b>100%</b>

**Notes:**

<sup>1</sup> About 80% of all visits to the Minneapolis Chain of Lakes and Anoka County Riverfront RP are trail visits. Mississippi Gorge Regional Park is also more similar to a parkway than a regional park. However, the above trail totals do not include those trail visits.

If Mississippi Gorge, Minneapolis Chain of Lakes and Anoka County Riverfront RP trail visits are included in the trail total, **about 14.4 million, or 38% of all visits, are trail visits.**

**Table 5: Most-visited regional parks and trails - 2009**

Rank by visits	Park/trail	Agency	2009 Visitation (1,000's)	Cumulative percent of total visitation
1	Minneapolis Chain-of-Lakes RP	Minneapolis	4,860.8	12.8%
2	Como RP, Zoo & Conservatory SRF	St. Paul	3,414.3	21.7%
3	Mississippi Gorge RP	Minneapolis/St. Paul	2,035.8	27.1%
4	Central Mississippi Riverfront RP	Minneapolis	1,516.0	31.1%
5	Nokomis-Hiawatha RP	Minneapolis	1,509.5	35.0%
6	Minnehaha RP	Minneapolis	1,326.4	38.5%
7	Minnehaha Parkway RT	Minneapolis	1,307.6	42.0%
8	Hyland-Bush-Anderson Lakes PR	Three Rivers/Bloomington	1,268.5	45.3%
9	Lilydale-Harriet Island-Cherokee Hts RP	St. Paul	1,110.8	48.2%
10	Phalen-Keller RP	St. Paul/Ramsey County	1,091.9	51.1%
11	Bunker Hills RP	Anoka County	908.6	53.5%
12	Battle Creek/Indian Mounds RP	Ramsey County/St. Paul	757.5	55.5%
13	Elm Creek PR	Three Rivers	735.9	57.4%
14	Coon Rapids Dam RP	Anoka County/Three Rivers	714.2	59.3%
15	Victory Memorial Parkway RT	Minneapolis	627.4	60.9%
16	Kenilworth RT	Minneapolis	617.0	62.5%
17	Grass-Vadnais-Snail Lake RP	Ramsey County	530.7	63.9%
18	Long Lake RP	Ramsey County	502.3	65.2%
19	Lake Elmo PR	Washington County	500.2	66.6%
20	Rice Creek West RT	Anoka/Ramsey Counties	449.0	67.7%
<b>Total</b>			<b>25,784.5</b>	
<b>Percent of 2009 Visitation</b>				<b>67.7%</b>

**Table 6: Urban parks visitation - 2009**

Agency	2009 Visitation (1,000's)
Minneapolis Parks Total	14,113.0
St. Paul Parks Total	7,229.5
<b>Urban Total</b>	<b>21,342.6</b>
<b>Urban Percentage of 2009 visitation</b>	<b>56.1%</b>

**Table 7: Como visitation - park and zoo/conservatory**

Park Unit	2009 Visitation (1,000's)	2009 %
Como Zoo & Conservatory SRF <sup>1</sup>	2,704.1	79.2%
Como Park (non-zoo/conservatory visits)	710.2	20.8%
<b>Como Total</b>	<b>3,414.3</b>	<b>100%</b>

**Notes:**

<sup>1</sup> Como Zoo & Conservatory Special Recreation Feature estimates are based on visitor interviews conducted in 2008. That data indicated that 79.2% of all Como visitors were primarily visiting the Zoo & Conservatory. Zoo/Conservatory SRF visitors could possibly use Como RP for secondary activities during their visit, so the total use of Como RP is higher than the 20.8% listed for non-zoo/conservatory visits.

**Table 8: Visitation estimates by agency for operations and maintenance funding formula purposes**

<b>Agency</b>	<b>2009 Visitation (1,000's)</b>	<b>Percentage of total <sup>1</sup></b>
Anoka County <sup>2,3</sup>	3,211.1	8.49%
Bloomington	512.6	1.36%
Carver County	265.5	0.70%
Dakota County	929.8	2.46%
Minneapolis Park & Recreation Board	14,113.0	37.32%
Ramsey County	3,057.3	8.08%
St Paul <sup>2</sup>	7,228.2	19.11%
Scott County	255.1	0.67%
Three Rivers Park District - Hennepin <sup>2</sup>	6,694.2	17.70%
Three Rivers Park District - Scott	292.0	0.77%
Washington County	1,261.2	3.33%
<b>TOTAL</b>	<b>37,820.1</b>	<b>100.00%</b>

**Notes:**

<sup>1</sup> Percentages are given to the second decimal point for use in the O&M funding formula.

<sup>2</sup> O&M visitation estimates do not include enterprise facility visitation (Bunker Beach and downhill skiing at Hyland and Como).

<sup>3</sup> Previous counts at Bunker Hills Regional Park included Bunker Beach as a defined entrance at the park. Anoka County is now reporting visitation to Bunker Beach based on ticket sales for admission. This visitation is now being reported in Table 2 rather in the base summer visitation. Since Bunker Beach is an enterprise facility and its specific visitation is being reported, the O&M visitation estimates have now been adjusted.



**Table 9: Regional Parks System units sample counted 2009**

<b>Regional Parks</b>		<b>Park Agency</b>	<b>Regional Trails</b>		<b>Park Agency</b>
1	Anoka County Riverfront RP	Anoka County	1	Central Anoka RT	Anoka County
2	Bunker Hills RP	Anoka County	2	Mississippi River RT (Anoka Co)	Anoka County
3	Lake George RP	Anoka County	3	Rice Creek North RT	Anoka County/Ramsey County
4	Martin-Island-Linwood Lakes RP	Anoka County	4	Rice Creek West RT	Anoka County/Ramsey County
5	Rum River RP	Anoka County	5	Big Rivers RT	Dakota County
6	Coon Rapids Dam RP	Anoka County/Three Rivers	6	Mississippi River RT (Dakota Co)	Dakota County
7	Baylor RP	Carver County	7	North Urban RT	Dakota County
8	Lake Minnewashta RP	Carver County	8	Cedar Lake RT	Minneapolis Park & Rec Board
9	Lake Waconia RP	Carver County	9	Columbia Parkway RT	Minneapolis Park & Rec Board
10	Lake Byllesby RP	Dakota County	10	Kenilworth RT	Minneapolis Park & Rec Board
11	Lebanon Hills RP	Dakota County	11	Luce Line RT	Minneapolis/Three Rivers
12	Central Mississippi Riverfront RP	Minneapolis Park & Rec Board	12	Minnehaha Parkway RT	Minneapolis Park & Rec Board
13	Minneapolis Chain-of-Lakes RP	Minneapolis Park & Rec Board	13	Northeast Diagonal RT**	Minneapolis/Three Rivers
14	Minnehaha RP	Minneapolis Park & Rec Board	14	Ridgeway Parkway RT	Minneapolis Park & Rec Board
15	Nokomis-Hiawatha RP	Minneapolis Park & Rec Board	15	St. Anthony Parkway RT	Minneapolis Park & Rec Board
16	Theodore Wirth RP	Minneapolis Park & Rec Board	16	Victory Memorial Parkway RT	Minneapolis Park & Rec Board
17	Mississippi Gorge RP	Minneapolis/St. Paul	17	Birch Lake RT	Ramsey County
18	North Mississippi RP	Minneapolis/Three Rivers	18	Highway 96 RT	Ramsey County
19	Bald Eagle-Otter Lake RP	Ramsey County	19	Trout Brook RT	Ramsey County
20	Long Lake RP	Ramsey County	20	Bruce Vento RT	Ramsey County/St. Paul
21	Snail Lake (Grass-Vadnais-Snail) RP	Ramsey County	21	Samuel Morgan RT	St. Paul
22	Tony Schmidt RP	Ramsey County	22	Scott County RT	Scott County
23	Battle Creek & Indian Mounds RP	Ramsey County/St. Paul	23	Bassett Creek RT**	Three Rivers Park District
24	Como RP	St. Paul	24	Cedar Lake LRT RT	Three Rivers Park District
25	Hidden Falls-Crosby Farm RP	St. Paul	25	Dakota Rail RT**	Three Rivers Park District
26	Lilydale-Harriet Island & Cherokee Heights RP	St. Paul	26	Lake Independence RT	Three Rivers Park District
27	Phalen-Keller RP	St. Paul/Ramsey County	27	Lake Minnetonka LRT RT	Three Rivers Park District
28	Cedar Lake Farm RP**	Scott County	28	Medicine Lake RT	Three Rivers Park District
29	Bryant Lake RP	Three Rivers Park District	29	Minnesota River Bluffs LRT RT	Three Rivers Park District
30	Clifton E. French RP	Three Rivers Park District	30	North Cedar Lake RT	Three Rivers Park District
31	Eagle Lake RP	Three Rivers Park District	31	Rush Creek RT	Three Rivers Park District
32	Fish Lake RP	Three Rivers Park District	32	Shingle Creek RT	Three Rivers Park District
33	Lake Minnetonka Islands RP	Three Rivers Park District	33	Hardwood Creek RT	Washington County
34	Lake Minnetonka RP	Three Rivers Park District			
35	Cleary Lake RP	Three Rivers/Scott County			
36	Cottage Grove Ravine RP	Washington County			
37	Pine Point RP	Washington County			
38	St. Croix Bluffs RP	Washington County			
<b>Park Reserves</b>			<b>Special Recreation Features</b>		
1	Rice Creek Chain-of-Lakes PR	Anoka County	1	Como Conservatory	St. Paul
2	Miesville Ravine PR	Dakota County	2	Como Zoo	St. Paul
3	Spring Lake PR	Dakota County	3	Gale Woods	Three Rivers Park District
4	Baker PR	Three Rivers Park District	4	Noerenberg Gardens SRF	Three Rivers Park District
5	Carver PR	Three Rivers Park District	5	Silverwood SRF	Three Rivers Park District
6	Crow-Hassan PR	Three Rivers Park District	6	Square Lake SRF	Washington County
7	Elm Creek PR	Three Rivers Park District			
8	Lake Rebecca PR	Three Rivers Park District			
9	Hyland-Bush-Anderson L. PR	Three Rivers/Bloomington			
10	Murphy-Hanrehan PR	Three Rivers/Scott County			
11	Big Marine PR	Washington County			
12	Lake Elmo PR	Washington County			
			<b>89 TOTAL UNITS</b>		
			** First year counted		

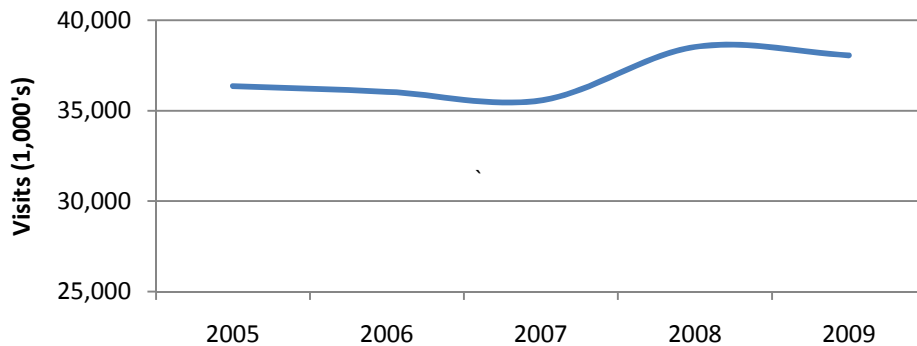
**Table 10: Comparison of estimated visits from 2005 to 2009**

	Visits in 1,000s per year				
	2005	2006	2007	2008	2009
Anoka County	3,170.6	2,820.5	2,943.8	3,280.7	3,280.7
Bloomington	759.9	708.0	450.8	526.8	512.6
Carver County	305.9	305.3	271.2	265.0	265.5
Dakota County	1,047.1	873.7	795.0	879.6	929.8
Mpls Park & Rec. Board	14,063.8	13,868.6	13,404.4	15,442.4	14,113.0
Ramsey County	3,720.8	3,400.3	3,265.9	3,286.2	3,057.3
St. Paul	6,536.2	6,876.4	7,196.1	6,649.7	7,229.5
Scott County	44.0	59.6	90.2	259.9	255.1
Three Rivers	5,330.4	5,697.0	5,883.9	6,472.6	6,865.8
Three Rivers (Scott County)	274.5	296.7	258.6	302.0	292.0
Washington County	1,105.2	1,136.8	1,003.8	1,158.4	1,261.2
<b>REGIONAL TOTALS <sup>1</sup></b>	<b>36,358.4</b>	<b>36,042.9</b>	<b>35,563.7</b>	<b>38,523.4</b>	<b>38,062.6</b>
% annual increase	-	-0.9%	-1.3%	8.3%	-1.2%

**Notes:**

<sup>1</sup> Visitation estimates for 2005-2007 were adjusted to reflect the seasonal multipliers from the *Metropolitan Council Regional Parks and Trails Survey 2008* so that estimates are comparable across all years. Therefore, the estimates shown in Table 10 will not correspond to the published annual use estimates for 2005-2007.

**Total Annual Visits: 2005 to 2009**



**Table 11: Top activities in the Regional Parks System - 2009**

Activity	% of park activity occasions <sup>1</sup>	# of park activity occasions	% of trail activity occasions	# of trail activity occasions	Total # of activity occasions	% of total visits
		1,000's		1,000's	1,000's	
Walking/hiking	21%	6,263	30%	2,472	8,735	23%
Biking	10%	2,982	45%	3,707	6,690	18%
Swimming <sup>3</sup>	16%	4,772	2%	165	4,937	13%
Picnicking	10%	2,982	0%	-	2,982	8%
Relaxing <sup>2</sup>	9%	2,684	2%	165	2,849	7%
Jogging/running	5%	1,491	10%	824	2,315	6%
Playground use <sup>3</sup>	7%	2,088	1%	82	2,170	6%
Dog-walking	5%	1,491	7%	577	2,068	5%
Sunbathing <sup>3</sup>	6%	1,789	1%	82	1,872	5%
Fishing <sup>3</sup>	6%	1,730	1%	82	1,812	5%
Boating	4%	1,193	0%	-	1,193	3%
Zoo visits (Como)	4%	1,193	0%	-	1,193	3%
In-line skating	2%	596	4%	330	926	2%
Camping	2%	596	0%	-	596	2%
		<b>Regional Parks</b>		<b>Regional Trails</b>		<b>System-wide</b>
<b>2009 system-wide visits</b>						
(in 1,000's of visits)		29,824.2		8,238.3		38,062.6
% of 2009 visits		78%		22%		100%

**Notes:**

<sup>1</sup> Activity pattern data of regional park and trail visitors was collected in 2008 and published in the *Metropolitan Council Regional Parks and Trails Survey 2008*. The activity patterns were applied to the 2008 visit estimate to generate this table. Visitors could do more than one activity during their visit to a regional park or trail. Each time they participated in an activity, it was considered an activity occasion. Therefore, the total number of activity occasions is greater than the actual number of visits.

<sup>2</sup> "Relaxing" was a general activity on a list of activities that park visitors used to indicate what they did during their park visit. This activity was not specifically defined.

<sup>3</sup> For trail visits, survey respondents indicated that the trails were providing access to these activities. For example, 2% of trail visits provided access to swimming and 1% of trail visits provided access to fishing.

**Table 12: Visitor origin by agency**

Agency	Total visits (1,000s)	Number and percent of visits from people who live in the following agency jurisdictions: (in 1,000s)												
		Anoka County	Bloomington	Carver County	Dakota County	Minneapolis	Ramsey County	St Paul	Scott County	Three Rivers (Hennepin)	Washington	Greater MN	Out of state	Outside of US
<b>ANOKA COUNTY</b>														
Total Visitation	<b>3,280.7</b>	<b>1,861.2</b>	8.2	4.1	32.7	135.0	646.3	77.7	4.1	233.2	57.3	143.2	77.7	-
Visitation by Percentage	<b>0.1</b>	<b>56.7%</b>	0.2%	0.1%	1.0%	4.1%	19.7%	2.4%	0.1%	7.1%	1.7%	4.4%	2.4%	0.0%
<b>BLOOMINGTON</b>														
Total Visitation	<b>512.6</b>	3.9	<b>279.2</b>	5.2	24.9	34.1	3.9	13.1	27.5	94.4	2.6	5.2	17.0	1.3
Visitation by Percentage	<b>0.0</b>	0.8%	<b>54.5%</b>	1.0%	4.9%	6.6%	0.8%	2.6%	5.4%	18.4%	0.5%	1.0%	3.3%	0.3%
<b>CARVER COUNTY</b>														
Total Visitation	<b>265.5</b>	2.1	4.1	<b>126.6</b>	13.7	7.5	0.7	1.4	13.7	54.1	0.7	36.3	4.8	-
Visitation by Percentage	<b>0.0</b>	0.8%	1.5%	<b>47.7%</b>	5.2%	2.8%	0.3%	0.5%	5.2%	20.4%	0.3%	13.7%	1.8%	0.0%
<b>DAKOTA COUNTY</b>														
Total Visitation	<b>929.8</b>	6.8	18.2	2.3	<b>598.6</b>	51.2	18.2	104.7	9.1	33.0	19.3	37.6	30.7	-
Visitation by Percentage	<b>0.0</b>	0.7%	2.0%	0.2%	<b>64.4%</b>	5.5%	2.0%	11.3%	1.0%	3.5%	2.1%	4.0%	3.3%	0.0%
<b>MINNEAPOLIS PARK &amp; REC BOARD</b>														
Total Visitation	<b>14,113.0</b>	294.7	311.1	32.7	360.2	<b>7,367.6</b>	327.4	704.0	65.5	3,896.6	65.5	114.6	540.3	32.7
Visitation by Percentage	<b>0.4</b>	2.1%	2.2%	0.2%	2.6%	<b>52.2%</b>	2.3%	5.0%	0.5%	27.6%	0.5%	0.8%	3.8%	0.2%
<b>RAMSEY COUNTY</b>														
Total Visitation	<b>3,057.3</b>	288.9	3.9	3.9	35.1	54.7	<b>1,640.0</b>	691.1	-	74.2	160.1	35.1	66.4	3.9
Visitation by Percentage	<b>0.1</b>	9.5%	0.1%	0.1%	1.1%	1.8%	<b>53.6%</b>	22.6%	0.0%	2.4%	5.2%	1.1%	2.2%	0.1%
<b>ST. PAUL</b>														
Total Visitation	<b>7,229.5</b>	216.1	36.0	18.0	648.2	522.2	558.2	<b>3,646.3</b>	36.0	342.1	531.2	243.1	396.1	36.0
Visitation by Percentage	<b>0.2</b>	3.0%	0.5%	0.2%	9.0%	7.2%	7.7%	<b>50.4%</b>	0.5%	4.7%	7.3%	3.4%	5.5%	0.5%
<b>SCOTT COUNTY / THREE RIVERS</b>														
Total Visitation	<b>547.2</b>	-	8.2	3.6	106.0	5.4	0.9	1.8	<b>378.7</b>	14.5	1.8	17.2	8.2	0.9
Visitation by Percentage	<b>0.0</b>	0.0%	1.5%	0.7%	19.4%	1.0%	0.2%	0.3%	<b>69.2%</b>	2.6%	0.3%	3.1%	1.5%	0.2%
<b>THREE RIVERS PARK DISTRICT</b>														
Total Visitation	<b>6,865.8</b>	422.0	157.3	336.1	85.8	736.6	64.4	57.2	114.4	<b>4,312.6</b>	28.6	386.2	143.0	21.5
Visitation by Percentage	<b>0.2</b>	6.1%	2.3%	4.9%	1.3%	10.7%	0.9%	0.8%	1.7%	<b>62.8%</b>	0.4%	5.6%	2.1%	0.3%
<b>WASHINGTON COUNTY</b>														
Total Visitation	<b>1,261.2</b>	73.3	4.8	-	52.6	22.3	111.6	106.8	3.2	27.1	<b>707.9</b>	74.9	74.9	1.6
Visitation by Percentage	<b>0.0</b>	5.8%	0.4%	0.0%	4.2%	1.8%	8.8%	8.5%	0.3%	2.1%	<b>56.1%</b>	5.9%	5.9%	0.1%
<b>TOTAL VISITATION</b>	<b>38,062.6</b>	<b>3,169.1</b>	<b>831.0</b>	<b>532.6</b>	<b>1,957.9</b>	<b>8,936.6</b>	<b>3,371.6</b>	<b>5,404.2</b>	<b>652.2</b>	<b>9,081.7</b>	<b>1,575.1</b>	<b>1,093.4</b>	<b>1,359.2</b>	<b>97.9</b>
<b>TOTAL VISITATION by PERCENTAGE</b>	<b>100.0%</b>	<b>8.3%</b>	<b>2.2%</b>	<b>1.4%</b>	<b>5.1%</b>	<b>23.5%</b>	<b>8.9%</b>	<b>14.2%</b>	<b>1.7%</b>	<b>23.9%</b>	<b>4.1%</b>	<b>2.9%</b>	<b>3.6%</b>	<b>0.3%</b>

**NOTES:**

All visits are listed in units of 1,000.

Local visits are defined as visits to a park by visitors who reside in that park agency's jurisdiction. Local visits for each agency are in bold and are highlighted.

Visitor origin data is from the *Metropolitan Council Regional Parks and Trails Survey 2008*. Percentages were adjusted to disregard "unknown" visitor origin and therefore may differ slightly from the survey report

Three Rivers Park District owns and operates two regional parks in Scott County. The amounts shown in this table reflect visits to park and trail units located in Scott County regardless of managing entity.

**Table 13: Local and non-local visits by agency**

Agency	Total visits (1,000s)	Number and percent of visits from people who live in the following agency jurisdictions: (in 1,000s)				
		Local Visits	Non-Local Visits			
			Regional	Greater MN	Out of state	Outside of US
<b>ANOKA COUNTY</b>						
Total Visitation	<b>3,280.69</b>	1,861.2	1,198.6	143.2	77.7	-
Visitation by Percentage	<b>0.09</b>	56.7%	36.5%	4.4%	2.4%	0.0%
<b>BLOOMINGTON</b>						
Total Visitation	<b>512.56</b>	279.2	209.7	5.2	17.0	1.3
Visitation by Percentage	<b>0.01</b>	54.5%	40.9%	1.0%	3.3%	0.3%
<b>CARVER COUNTY</b>						
Total Visitation	<b>265.47</b>	126.6	97.84	36.3	4.8	-
Visitation by Percentage	<b>0.01</b>	47.7%	36.9%	13.7%	1.8%	0.0%
<b>DAKOTA COUNTY</b>						
Total Visitation	<b>929.78</b>	598.6	262.9	37.6	30.7	-
Visitation by Percentage	<b>0.02</b>	64.4%	28.3%	4.0%	3.3%	0.0%
<b>MINNEAPOLIS PARK &amp; RECREATION BOARD</b>						
Total Visitation	<b>14,113.01</b>	7,367.6	6,057.8	114.6	540.3	32.7
Visitation by Percentage	<b>0.37</b>	52.2%	42.9%	0.8%	3.8%	0.2%
<b>RAMSEY COUNTY</b>						
Total Visitation	<b>3,057.35</b>	1,640.0	1,312.0	35.1	66.4	3.9
Visitation by Percentage	<b>0.08</b>	53.6%	42.9%	1.1%	2.2%	0.1%
<b>ST. PAUL</b>						
Total Visitation	<b>7,229.54</b>	3,646.3	2,908.0	243.1	396.1	36.0
Visitation by Percentage	<b>0.19</b>	50.4%	40.2%	3.4%	5.5%	0.5%
<b>SCOTT COUNTY / THREE RIVERS</b>						
Total Visitation	<b>547.15</b>	378.7	142.2	17.2	8.2	0.9
Visitation by Percentage	<b>0.01</b>	69.2%	26.0%	3.1%	1.5%	0.2%
<b>THREE RIVERS PARK DISTRICT</b>						
Total Visitation	<b>6,865.81</b>	4,312.6	2,002.5	386.2	143.0	21.5
Visitation by Percentage	<b>0.18</b>	62.8%	29.2%	5.6%	2.1%	0.3%
<b>WASHINGTON COUNTY</b>						
Total Visitation	<b>1,261.23</b>	707.9	401.8	74.9	74.9	1.6
Visitation by Percentage	<b>3.3%</b>	56.1%	31.9%	5.9%	5.9%	0.1%
<b>TOTAL VISITATION</b>	<b>38,062.6</b>	<b>20,918.7</b>	<b>14,593.4</b>	<b>1,093.4</b>	<b>1,359.2</b>	<b>97.9</b>
<b>TOTAL VISITATION by PERCENTAGE</b>	<b>100.0%</b>	<b>55.0%</b>	<b>38.3%</b>	<b>2.9%</b>	<b>3.6%</b>	<b>0.3%</b>

**NOTES:**

All visits are listed in units of 1,000.

Local visits are defined as visits to a park by visitors who reside in that park agency's jurisdiction. Local visits for each agency are in bold and are highlighted.

Visitor origin data is from the *Metropolitan Council Regional Parks and Trails Survey 2008*. Percentages were adjusted to disregard "unknown" visitor origin and therefore may differ slightly from the survey report