

*Minnesota relies on geographic information systems to address critical issues ranging from protecting the environment to responding to emergencies. The Minnesota Governor's Council on Geographic Information promotes the effective use of GIS through coordinated investments; adoption of standards, policies, and guidelines; stewardship of geographic data; and minimized duplication of effort and public expenditure.*

## ACCOMPLISHMENTS, FY 2008

In 2007-08, the council addressed its mission by

- Helping people get the data and services they need
- Communicating with Minnesota stakeholders
- Coordinating GIS across agencies and sectors
- Developing standards that support data sharing

### Helping People Get the Data and Services They Need

- Helped the state secure federal grants from EPA to maintain the state hydrography data framework (\$300,000) and from FGDC to develop an ongoing process for mapping critical infrastructure (\$50,000).
- Developed the nation's first state-endorsed program for training GIS personnel in emergency management practices and procedures.
- Supported a successful effort to fund high resolution digital elevation data in the Red River Basin.
- Began efforts to update National Wetland Inventory maps.
- Implemented a sustainable process to track changes to federal codes for cities and townships.

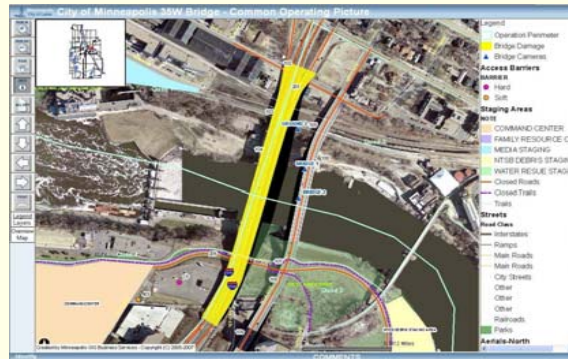
### Communicating with Minnesota Stakeholders

- Expanded the Council website to provide useful information about emergency preparedness.
- Created an extensive SharePoint information hub for the Emergency Preparedness Committee to promote both open discussion and secure sharing of official and sensitive information.

## Improving Emergency Preparedness



*Emergency responders viewing air photos and maps at the scene of the Minneapolis I-35W bridge collapse*



*Common Operating Picture website for bridge collapse response, created by the Minnesota Department of Transportation and the City of Minneapolis*

The Council's Emergency Preparedness Committee works to promote, coordinate, and standardize GIS use across all levels of the state's Emergency Management community. The committee has initiated development of a state-sponsored GIS "Go Team" for disaster response to increase the use of GIS in planning for and responding to situations such as the I-35W bridge collapse.

- Connected with key stakeholder groups:
  - **GIS/LIS community** by organizing seven sessions at their annual conference and publishing ten articles in their newsletter.
  - **Minnesota counties** by supporting the Minnesota County GIS Association and publishing an article in the *MN Counties* newsletter.

- **Information Technology community** by organizing a workshop and a full GIS track at the MN Government IT Symposium.
- **Emergency preparedness and public safety community** by organizing presentations and displays at the:
  - Governor's Homeland Security and Emergency Management Conference
  - Health Department's Ready to Respond Conference
  - Hennepin County Sheriff's Communication Response Team meeting
- Updated the Council's operating policies and Communication Plan to better connect with the following communities: local government, surveying, utilities, K-12 education, planning, and public health.

### Coordinating GIS across Agencies and Sectors

- Helped launch a new Governor's *Drive to Excellence* initiative focused on state enterprise GIS. Supported the effort by involving many state agencies. Made certain that non-state-agency stakeholders had a voice in the process.
- Grew the Emergency Preparedness Committee from 17 to 122 people with representatives from all sectors and levels of government.
- Worked with the private sector to learn about current technology and best practices for collecting digital elevation data.
- Participated in planning for the 2008 Republican National Convention in St. Paul.

### Developing Standards that Support Data Sharing

- Coordinated state response to the proposed federal Wetland Mapping Standard, leading to many changes and improvements.
- Worked with the state's Office of Enterprise Technology to develop an interim process for adopting state GIS standards.
- Promoted the U.S. National Grid for locating places and events.
- Identified the Land Management Information Center as the statewide steward for making changes to municipal names in the national *Geographic Names Information System (GNIS)*.

## PLANNED ACTIVITIES, FY 2009

In 2008-09, the council will continue to support more cost-effective, higher-performing GIS services within Minnesota with the following new initiatives:

### Monitor and Work to Fulfill Data and Services Needs

- Develop guidelines and resource material to support digital elevation proposals.
- Implement a plan to update and maintain the state's hydrography framework.
- Connect with realtors and others in the private sector interested in local parcel data.
- Help create state-endorsed data layers for schools, hospitals, fire stations and police stations.

### Enhance Communications with Stakeholders

- Move into initial operational capability for the Go Team to support emergency responses.
- Expand Communications Plan to better identify ways to connect to the homeland security and emergency response communities and the environmental community.
- Produce an updated Council brochure.

### Coordinate across Agencies and Sectors

- Help the state respond to the GIS *Drive to Excellence* recommendations.
- Provide a forum for defining and coordinating state agency efforts to work with local government parcel data.

### Standards Initiatives

- Develop a long-term solution to the state standards approval process.
- Maintain technical specifications for high resolution elevation data so individual projects across the state form a cohesive whole.
- Expand GNIS authority for municipal names to cover Greater Minnesota.
- Develop recommendations to update the Minnesota Geographic Metadata Guidelines.
- Complete and approve state standards for:
  - Municipal identifiers
  - Storm sewer data
  - U.S. National Grid

**Council members represent a broad cross-section of organizations that benefit from coordination of geospatial technology and data.**

### FY08 Appointed Members

**Jeff Bloomquist**, Farm Service Agency, USDA  
**Gordon Chinander**, Metropolitan Emergency Services Board  
**Will Craig** (Vice-chair), University of Minnesota  
**Mike Dolbow**, MN Dept. of Agriculture  
**Kris Eide**, MN Dept. of Public Safety  
**Shannon Flynn**, MN Dept. of Natural Resources  
**Rick Gelbmann** (Chair), Metropolitan Council  
**Jeff Grussing**, United Services Group  
**Jonette Kreideweis**, MN Dept. of Transportation  
**Stuart Lien**, Clearwater County  
**Tim Ogg**, MN Board of Water and Soil Resources  
**Victoria Reinhardt**, Ramsey County  
**Ken Saffert**, City of Mankato  
**Tad Schindler**, MN Pollution Control Agency  
**Gerry Sjerven**, Natural Resources Research Institute  
**Mark Sloan**, Clay County  
**Bill Swing**, Wright County  
**Sally Wakefield**, 1000 Friends of Minnesota

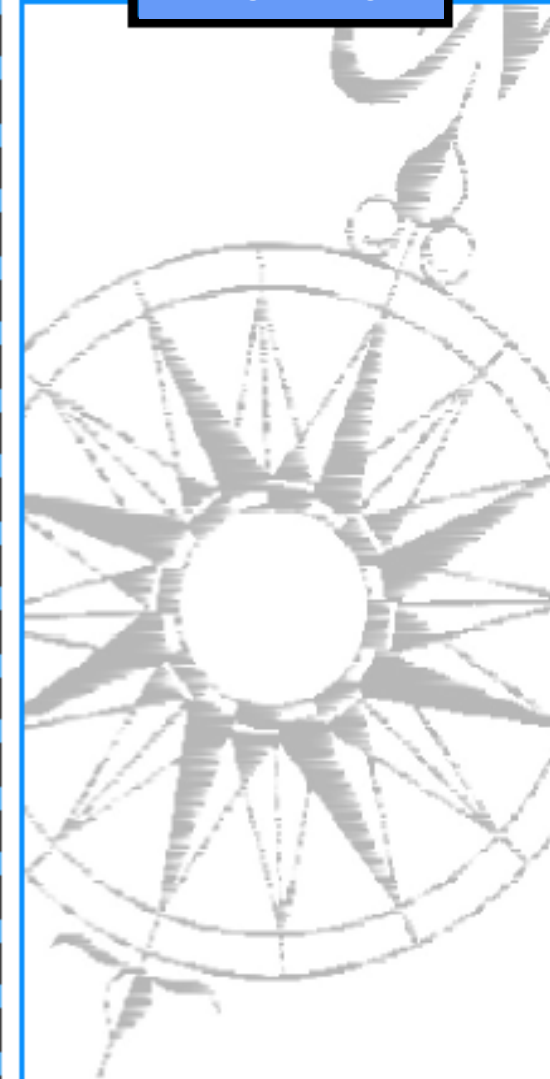
### FY08 Ex-Officio Members

**David Arbeit**, Land Management Information Center  
**Lee Meilleur**, Legislative Coordinating Commission  
**Eileen Quam**, MN Office of Enterprise Technology  
**Sally Wakefield**, MN GIS/LIS Consortium  
**Ron Wencl**, U.S. Geological Survey



MINNESOTA GOVERNOR'S COUNCIL  
ON GEOGRAPHIC INFORMATION  
658 Cedar Street, Room 300  
St. Paul, MN 55155  
e-mail: [gis.council@state.mn.us](mailto:gis.council@state.mn.us)  
[www.gis.state.mn.us](http://www.gis.state.mn.us)

FY 2008  
ANNUAL REPORT



**Minnesota  
Governor's Council  
on Geographic  
Information**