



Minnesota Department of **Human Services**

# **DWP Fifth and Twelfth Month Outcomes**

## **Data for DWP Cohorts from July 2004 through April 2010**

Published November 2010  
Minnesota Department of Human Services  
Program Assessment & Integrity Division, 651-431-3936  
444 Lafayette Road North  
St. Paul, MN 55155

[http://www.dhs.state.mn.us/main/groups/Economic\\_support/documents/pub/DHS\\_id\\_004113.hcsp](http://www.dhs.state.mn.us/main/groups/Economic_support/documents/pub/DHS_id_004113.hcsp)

## **DWP Fifth and Twelfth Month Outcomes**

### **Introduction**

The Diversionary Work Program (DWP) was designed to provide intensive employment services to family cash assistance applicants with the intention of redirecting them into jobs rather than onto the Minnesota Family Investment Program (MFIP). DWP cash assistance and employment services cease after four months. Participants who remain unemployed at that time may then be assessed for MFIP eligibility.

It is expected that, at the end of four months of DWP, fewer cash assistance applicants will become MFIP recipients than would have in the absence of DWP.

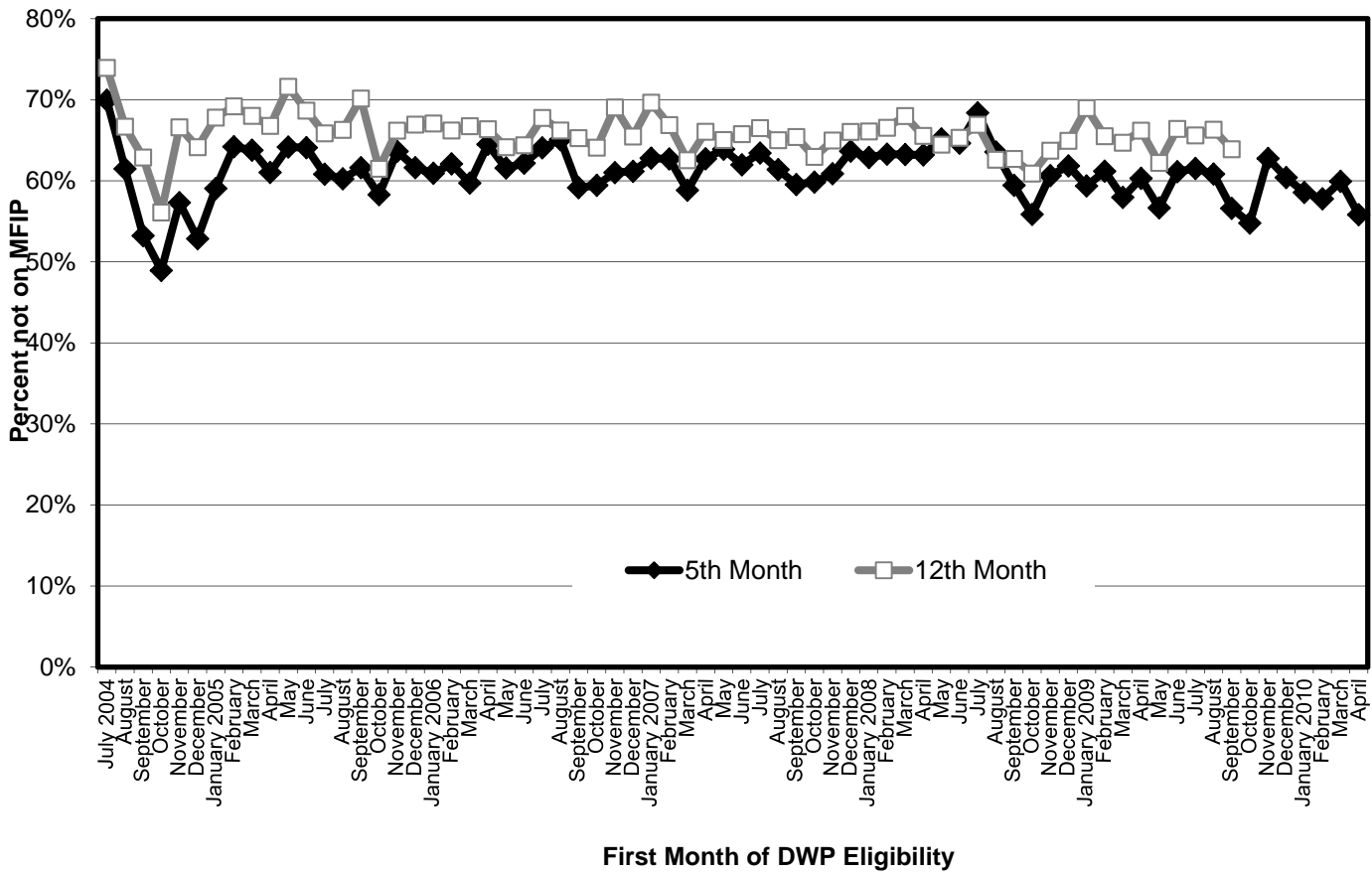
For each county, this report indicates the number of DWP cases eligible for DWP for the first time in a given month and the percent of that initial month cohort that were not converted to MFIP by the month following the four month DWP eligibility period (the fifth month) and the percent not on MFIP in the twelfth month.

The graph on the first page and the table on the second and third page following the introduction shows approximately sixty percent of all DWP applicants were not receiving MFIP benefits in the month immediately following their last month of DWP eligibility. Similarly, about sixty-five percent were not on MFIP in the twelfth month after becoming eligible for DWP. The tables on subsequent pages provide monthly data by county.

It is important to recognize that a cash assistance applicant that was not receiving MFIP in the fifth or twelfth month after the first month DWP eligibility was not necessarily diverted into employment by the DWP program.

A pseudo-comparison group study found that, while the fifth-month exit rate jumped from approximately 40 percent to 60 percent after the implementation of DWP, the effect was not lasting. By the twelfth month, DWP applicants were on MFIP in approximately the same proportions as before the implementation of DWP. ("The Diversionary Work Program: Caseload and Cost Impact" Minnesota Department of Human Services, January 2007, <http://edocs.dhs.state.mn.us/lfserver/Legacy/DHS-4064P-ENG>)

### Percent of DWP Cases Off MFIP Cash in the 5th Month or 12th Month after the First month of DWP eligibility



Percent of DWP cases not on MFIP in the 5th month or 12th month  
after first month of DWP eligibility

First month of DWP eligibility	Number of cases in first month of of DWP eligibility	Percent not on MFIP in the 5th month after first month of DWP eligibility	Percent not on MFIP in the 12th month after first month of DWP eligibility
July 2004	579	69.9%	73.9%
August	1098	61.5%	66.7%
September	1026	53.2%	62.9%
October	1175	48.9%	56.1%
November	1000	57.3%	66.6%
December	1054	52.8%	64.1%
January 2005	1062	59.0%	67.8%
February	743	64.2%	69.2%
March	875	63.8%	68.0%
April	993	61.0%	66.8%
May	915	64.2%	71.6%
June	1075	64.1%	68.7%
July	1174	60.8%	65.8%
August	1278	60.3%	66.3%
September	1266	61.6%	70.1%
October	1215	58.3%	61.5%
November	1023	63.6%	66.2%
December	1055	61.6%	66.9%
January 2006	1090	60.9%	67.1%
February	852	62.1%	66.2%
March	998	59.7%	66.7%
April	1070	64.5%	66.4%
May	1007	61.6%	64.2%
June	1036	62.2%	64.4%
July	1163	64.1%	67.8%
August	1148	65.1%	66.2%
September	1062	59.1%	65.3%
October	1080	59.4%	64.1%
November	895	61.0%	69.1%
December	909	61.2%	65.5%
January 2007	978	62.8%	69.6%
February	815	62.7%	66.9%
March	918	58.8%	62.5%
April	963	62.7%	66.0%
May	958	63.9%	65.0%
June	952	62.0%	65.8%
July	1110	63.4%	66.5%
August	1077	61.4%	65.0%
September	991	59.5%	65.4%
October	966	59.8%	62.9%
November	879	60.9%	65.0%
December	886	63.7%	66.0%
January 2008	1029	62.9%	66.1%
February	798	63.3%	66.5%
March	865	63.2%	68.0%
April	975	63.2%	65.5%

Percent of DWP cases not on MFIP in the 5th month or 12th month  
after first month of DWP eligibility

First month of DWP eligibility	Number of cases in first month of of DWP eligibility	Percent not on MFIP in the 5th month after first month of DWP eligibility	Percent not on MFIP in the 12th month after first month of DWP eligibility
May	841	65.2%	64.4%
June	902	64.6%	65.3%
July	1009	68.4%	66.9%
August	941	63.5%	62.6%
September	954	59.4%	62.7%
October	933	55.8%	60.9%
November	973	60.6%	63.7%
December	972	61.8%	64.9%
January 2009	989	59.4%	69.0%
February	858	61.2%	65.5%
March	932	57.9%	64.7%
April	970	60.3%	66.2%
May	902	56.7%	62.2%
June	1003	61.1%	66.4%
July	1081	61.5%	65.6%
August	1021	60.8%	66.3%
September	1030	56.6%	63.9%
October	1015	54.8%	
November	926	62.7%	
December	904	60.4%	
January 2010	847	58.6%	
February	682	57.8%	
March	771	59.9%	
April	792	55.8%	

Fifth and Twelfth Month Status of Monthly DWP Case Cohorts - July, August, and September 2004

County	July 2004 DWP Eligible			August 2004 DWP Eligible			September 2004 DWP Eligible		
	Total Cases in Cohort	Percent Off MFIP Cash in 5th Month	Percent Off MFIP Cash in 12th Month	Total Cases in Cohort	Percent Off MFIP Cash in 5th Month	Percent Off MFIP Cash in 12th Month	Total Cases in Cohort	Percent Off MFIP Cash in 5th Month	Percent Off MFIP Cash in 12th Month
<b>State</b>	579	69.9%	73.9%	1098	61.5%	66.7%	1026	53.2%	62.9%
Aitkin	4	50.0%	75.0%	6	66.7%	66.7%	4	75.0%	100.0%
Anoka	52	69.2%	78.8%	67	53.7%	67.2%	68	66.2%	66.2%
Becker	2	50.0%	50.0%	4	100.0%	100.0%	3	66.7%	66.7%
Beltrami	11	72.7%	72.7%	16	56.3%	62.5%	14	64.3%	71.4%
Benton	1	100.0%	0.0%	9	100.0%	88.9%	7	71.4%	42.9%
Big Stone	0			1	100.0%	100.0%	1	100.0%	100.0%
Blue Earth	5	80.0%	100.0%	11	63.6%	90.9%	9	66.7%	77.8%
Brown	2	100.0%	50.0%	4	50.0%	50.0%	0		
Carlton	2	100.0%	100.0%	11	72.7%	72.7%	3	33.3%	66.7%
Carver	5	100.0%	80.0%	12	100.0%	91.7%	5	80.0%	100.0%
Cass	5	40.0%	60.0%	11	54.5%	72.7%	5	60.0%	80.0%
Chippewa	1	100.0%	100.0%	3	100.0%	100.0%	1	0.0%	0.0%
Chisago	2	50.0%	100.0%	14	64.3%	85.7%	13	53.8%	69.2%
Clay	5	100.0%	80.0%	15	93.3%	86.7%	24	54.2%	70.8%
Clearwater	2	100.0%	100.0%	2	100.0%	100.0%	1	100.0%	0.0%
Cook	0			0			0		
Cottonwood	2	100.0%	100.0%	2	100.0%	50.0%	2	100.0%	100.0%
Crow Wing	2	100.0%	100.0%	9	88.9%	77.8%	8	50.0%	62.5%
Dakota	39	79.5%	84.6%	66	68.2%	77.3%	51	58.8%	64.7%
Dodge	0			2	100.0%	100.0%	4	100.0%	50.0%
Douglas	0			1	100.0%	100.0%	4	100.0%	75.0%
Faribault	7	85.7%	85.7%	5	80.0%	80.0%	2	50.0%	50.0%
Fillmore	2	50.0%	0.0%	4	100.0%	100.0%	2	100.0%	100.0%
Freeborn	4	100.0%	100.0%	11	63.6%	72.7%	9	55.6%	66.7%
Goodhue	4	50.0%	75.0%	3	66.7%	66.7%	2	50.0%	0.0%
Grant	0			0			0		
Hennepin	134	67.2%	67.2%	259	54.4%	55.6%	253	41.1%	51.8%
Houston	3	100.0%	100.0%	3	33.3%	66.7%	9	44.4%	44.4%
Hubbard	0			4	75.0%	100.0%	2	100.0%	100.0%
Isanti	1	0.0%	100.0%	5	100.0%	80.0%	5	80.0%	80.0%
Itasca	7	85.7%	85.7%	7	71.4%	85.7%	4	75.0%	75.0%
Jackson	0			4	100.0%	100.0%	1	0.0%	100.0%
Kanabec	3	66.7%	100.0%	5	60.0%	40.0%	5	20.0%	80.0%
Kandiyohi	8	87.5%	87.5%	19	57.9%	68.4%	18	72.2%	77.8%
Kittson	0			0			0		
Koochiching	4	50.0%	75.0%	2	50.0%	50.0%	2	50.0%	50.0%
Lac qui Parle	0			1	100.0%	100.0%	2	100.0%	50.0%
Lake	0			0			2	50.0%	100.0%
Lake of the Woods	0			0			0		
LeSueur	4	75.0%	75.0%	10	70.0%	80.0%	7	100.0%	85.7%
Lincoln	1	100.0%	100.0%	1	100.0%	100.0%	0		
Lyon	4	100.0%	100.0%	7	85.7%	85.7%	6	33.3%	83.3%
Mcleod	4	100.0%	75.0%	9	77.8%	100.0%	6	100.0%	100.0%
Mahnomen	2	50.0%	50.0%	3	100.0%	33.3%	4	25.0%	50.0%
Marshall	1	100.0%	100.0%	5	100.0%	80.0%	2	50.0%	100.0%
Martin	2	100.0%	50.0%	6	50.0%	50.0%	2	100.0%	50.0%
Meeker	1	100.0%	0.0%	4	75.0%	100.0%	8	75.0%	87.5%

Fifth and Twelfth Month Status of Monthly DWP Case Cohorts - July, August, and September 2004

County	July 2004 DWP Eligible			August 2004 DWP Eligible			September 2004 DWP Eligible		
	Total Cases in Cohort	Percent Off MFIP Cash in 5th Month	Percent Off MFIP Cash in 12th Month	Total Cases in Cohort	Percent Off MFIP Cash in 5th Month	Percent Off MFIP Cash in 12th Month	Total Cases in Cohort	Percent Off MFIP Cash in 5th Month	Percent Off MFIP Cash in 12th Month
Mille Lacs	1	100.0%	100.0%	2	100.0%	100.0%	6	50.0%	50.0%
Morrison	1	100.0%	100.0%	2	100.0%	100.0%	2	100.0%	50.0%
Mower	3	0.0%	66.7%	10	60.0%	50.0%	17	41.2%	76.5%
Murray	2	50.0%	100.0%	1	100.0%	100.0%	1	100.0%	100.0%
Nicollet	2	50.0%	0.0%	8	62.5%	50.0%	7	42.9%	71.4%
Nobles	1	100.0%	100.0%	0			5	60.0%	60.0%
Norman	0			1	100.0%	100.0%	1	100.0%	100.0%
Olmsted	12	75.0%	66.7%	29	79.3%	75.9%	34	55.9%	64.7%
Otter Tail	6	83.3%	100.0%	8	75.0%	75.0%	9	77.8%	55.6%
Pennington	3	100.0%	100.0%	6	100.0%	83.3%	3	33.3%	66.7%
Pine	7	85.7%	85.7%	9	66.7%	44.4%	5	80.0%	100.0%
Pipestone	0			2	100.0%	100.0%	2	0.0%	100.0%
Polk	6	33.3%	83.3%	11	18.2%	81.8%	6	83.3%	100.0%
Pope	0			0			2	0.0%	50.0%
Ramsey	94	55.3%	59.6%	190	43.7%	52.1%	190	42.6%	54.7%
Red Lake	0			0			1	100.0%	100.0%
Redwood	1	100.0%	100.0%	1	100.0%	0.0%	1	100.0%	100.0%
Renville	5	60.0%	80.0%	6	100.0%	83.3%	3	66.7%	100.0%
Rice	14	64.3%	78.6%	7	71.4%	85.7%	5	80.0%	100.0%
Rock	1	100.0%	0.0%	1	0.0%	100.0%	3	66.7%	66.7%
Roseau	1	100.0%	100.0%	1	100.0%	100.0%	0		
St. Louis	20	65.0%	70.0%	38	68.4%	76.3%	35	48.6%	54.3%
Scott	10	70.0%	90.0%	12	75.0%	75.0%	5	20.0%	40.0%
Sherburne	6	100.0%	100.0%	10	50.0%	90.0%	7	85.7%	85.7%
Sibley	5	100.0%	100.0%	6	83.3%	66.7%	3	66.7%	66.7%
Stearns	10	80.0%	80.0%	29	62.1%	72.4%	18	66.7%	61.1%
Steele	3	100.0%	100.0%	6	83.3%	50.0%	7	42.9%	57.1%
Stevens	0			0			0		
Swift	1	100.0%	100.0%	0			1	100.0%	100.0%
Todd	0			8	87.5%	87.5%	6	66.7%	66.7%
Traverse	0			2	50.0%	100.0%	0		
Wabasha	1	100.0%	0.0%	3	100.0%	66.7%	5	100.0%	100.0%
Wadena	4	50.0%	75.0%	2	50.0%	50.0%	4	75.0%	75.0%
Waseca	2	0.0%	100.0%	4	75.0%	75.0%	5	40.0%	60.0%
Washington	5	40.0%	60.0%	21	52.4%	76.2%	20	70.0%	90.0%
Watonwan	1	100.0%	0.0%	2	50.0%	100.0%	1	100.0%	100.0%
Wilkin	0			4	100.0%	50.0%	3	100.0%	100.0%
Winona	5	80.0%	80.0%	6	83.3%	83.3%	11	36.4%	72.7%
Wright	8	100.0%	100.0%	7	28.6%	57.1%	12	66.7%	83.3%
Yellow Medicine	0			0			0		

Fifth and Twelfth Month Status of Monthly DWP Case Cohorts - October, November, and December 2004

County	October 2004 DWP Eligible			November 2004 DWP Eligible			December 2004 DWP Eligible		
	Total Cases in Cohort	Percent Off MFIP Cash in 5th Month	Percent Off MFIP Cash in 12th Month	Total Cases in Cohort	Percent Off MFIP Cash in 5th Month	Percent Off MFIP Cash in 12th Month	Total Cases in Cohort	Percent Off MFIP Cash in 5th Month	Percent Off MFIP Cash in 12th Month
<b>State</b>	1175	48.9%	56.1%	1000	57.3%	66.6%	1054	52.8%	64.1%
Aitkin	1	0.0%	100.0%	2	100.0%	100.0%	2	100.0%	100.0%
Anoka	74	60.8%	71.6%	67	58.2%	71.6%	69	75.4%	65.2%
Becker	6	66.7%	66.7%	5	80.0%	60.0%	6	66.7%	83.3%
Beltrami	19	57.9%	63.2%	15	66.7%	80.0%	18	66.7%	72.2%
Benton	10	60.0%	80.0%	8	62.5%	75.0%	6	50.0%	50.0%
Big Stone	2	100.0%	100.0%	0			1	0.0%	0.0%
Blue Earth	8	37.5%	50.0%	11	54.5%	72.7%	7	28.6%	57.1%
Brown	5	80.0%	60.0%	4	100.0%	100.0%	1	100.0%	100.0%
Carlton	6	66.7%	50.0%	5	40.0%	80.0%	6	83.3%	100.0%
Carver	4	50.0%	100.0%	8	100.0%	87.5%	2	50.0%	100.0%
Cass	8	62.5%	75.0%	10	60.0%	90.0%	10	20.0%	70.0%
Chippewa	1	100.0%	0.0%	0			2	100.0%	100.0%
Chisago	5	60.0%	80.0%	6	100.0%	100.0%	6	50.0%	100.0%
Clay	11	54.5%	72.7%	10	60.0%	80.0%	13	53.8%	69.2%
Clearwater	2	50.0%	100.0%	0			1	100.0%	100.0%
Cook	0			0			2	100.0%	100.0%
Cottonwood	5	80.0%	80.0%	3	66.7%	33.3%	4	75.0%	75.0%
Crow Wing	11	90.9%	90.9%	14	71.4%	64.3%	8	87.5%	87.5%
Dakota	44	75.0%	72.7%	50	74.0%	78.0%	60	65.0%	65.0%
Dodge	2	50.0%	50.0%	1	100.0%	0.0%	1	100.0%	0.0%
Douglas	3	100.0%	100.0%	4	75.0%	100.0%	8	87.5%	100.0%
Faribault	3	66.7%	33.3%	3	66.7%	100.0%	3	100.0%	100.0%
Fillmore	0			3	66.7%	33.3%	7	57.1%	57.1%
Freeborn	7	71.4%	85.7%	10	60.0%	60.0%	8	62.5%	62.5%
Goodhue	5	60.0%	80.0%	9	55.6%	77.8%	4	100.0%	100.0%
Grant	0			1	100.0%	100.0%	2	100.0%	100.0%
Hennepin	282	39.0%	46.8%	239	48.1%	58.6%	230	43.5%	58.3%
Houston	7	28.6%	57.1%	4	75.0%	75.0%	6	66.7%	83.3%
Hubbard	2	100.0%	50.0%	5	80.0%	100.0%	5	40.0%	60.0%
Isanti	7	57.1%	85.7%	5	60.0%	100.0%	11	63.6%	90.9%
Itasca	14	50.0%	57.1%	5	60.0%	80.0%	19	63.2%	73.7%
Jackson	1	100.0%	0.0%	2	50.0%	50.0%	3	100.0%	66.7%
Kanabec	3	100.0%	66.7%	5	60.0%	60.0%	4	75.0%	100.0%
Kandiyohi	12	58.3%	58.3%	8	62.5%	87.5%	16	56.3%	75.0%
Kittson	0			0			0		
Koochiching	4	25.0%	75.0%	5	60.0%	60.0%	2	50.0%	50.0%
Lac qui Parle	1	0.0%	0.0%	3	66.7%	100.0%	1	100.0%	100.0%
Lake	2	100.0%	100.0%	3	66.7%	100.0%	3	100.0%	100.0%
Lake of the Woods	0			1	100.0%	0.0%	0		
LeSueur	5	100.0%	60.0%	5	80.0%	100.0%	3	66.7%	100.0%
Lincoln	1	100.0%	100.0%	0			2	50.0%	100.0%
Lyon	6	83.3%	83.3%	3	66.7%	66.7%	3	0.0%	100.0%
Mcleod	7	85.7%	85.7%	6	100.0%	66.7%	6	83.3%	100.0%
Mahnomen	4	25.0%	50.0%	1	0.0%	100.0%	2	0.0%	50.0%
Marshall	1	100.0%	100.0%	2	50.0%	50.0%	3	33.3%	100.0%
Martin	6	66.7%	100.0%	5	80.0%	100.0%	4	50.0%	100.0%
Meeker	4	75.0%	100.0%	4	75.0%	75.0%	7	42.9%	71.4%



Fifth and Twelfth Month Status of Monthly DWP Case Cohorts - October, November, and December 2004

County	October 2004 DWP Eligible			November 2004 DWP Eligible			December 2004 DWP Eligible		
	Total Cases in Cohort	Percent Off MFIP Cash in 5th Month	Percent Off MFIP Cash in 12th Month	Total Cases in Cohort	Percent Off MFIP Cash in 5th Month	Percent Off MFIP Cash in 12th Month	Total Cases in Cohort	Percent Off MFIP Cash in 5th Month	Percent Off MFIP Cash in 12th Month
Mille Lacs	3	66.7%	66.7%	5	100.0%	100.0%	5	100.0%	100.0%
Morrison	5	80.0%	100.0%	6	83.3%	66.7%	1	0.0%	100.0%
Mower	14	50.0%	78.6%	11	72.7%	81.8%	6	66.7%	83.3%
Murray	0			3	66.7%	66.7%	3	66.7%	100.0%
Nicollet	11	54.5%	63.6%	7	57.1%	100.0%	3	66.7%	66.7%
Nobles	5	60.0%	100.0%	3	66.7%	66.7%	4	75.0%	75.0%
Norman	4	50.0%	75.0%	1	0.0%	100.0%	3	66.7%	66.7%
Olmsted	33	60.6%	69.7%	42	66.7%	71.4%	25	36.0%	68.0%
Otter Tail	5	100.0%	80.0%	13	84.6%	92.3%	11	63.6%	63.6%
Pennington	0			3	33.3%	100.0%	3	66.7%	100.0%
Pine	10	40.0%	70.0%	10	70.0%	80.0%	8	75.0%	100.0%
Pipestone	2	100.0%	100.0%	2	50.0%	50.0%	0		
Polk	5	40.0%	60.0%	5	100.0%	100.0%	7	57.1%	57.1%
Pope	3	66.7%	66.7%	1	0.0%	100.0%	0		
Ramsey	300	26.7%	32.3%	174	33.9%	39.1%	239	31.0%	43.1%
Red Lake	1	100.0%	100.0%	0			1	0.0%	0.0%
Redwood	3	66.7%	66.7%	4	75.0%	75.0%	5	60.0%	60.0%
Renville	2	100.0%	50.0%	4	50.0%	100.0%	0		
Rice	5	60.0%	60.0%	5	40.0%	100.0%	9	66.7%	77.8%
Rock	0			2	100.0%	100.0%	1	100.0%	100.0%
Roseau	1	100.0%	100.0%	1	100.0%	100.0%	1	100.0%	100.0%
St. Louis	36	55.6%	69.4%	37	48.6%	73.0%	41	61.0%	70.7%
Scott	11	72.7%	72.7%	13	84.6%	61.5%	6	83.3%	100.0%
Sherburne	12	75.0%	75.0%	9	66.7%	88.9%	13	76.9%	84.6%
Sibley	4	75.0%	100.0%	3	66.7%	100.0%	2	100.0%	100.0%
Stearns	19	57.9%	73.7%	18	61.1%	77.8%	18	77.8%	61.1%
Steele	6	50.0%	66.7%	8	75.0%	100.0%	5	80.0%	100.0%
Stevens	0			0			0		
Swift	3	100.0%	66.7%	2	50.0%	100.0%	0		
Todd	4	75.0%	100.0%	7	71.4%	71.4%	6	83.3%	83.3%
Traverse	3	66.7%	100.0%	0			0		
Wabasha	3	100.0%	100.0%	3	100.0%	100.0%	0		
Wadena	2	50.0%	0.0%	1	100.0%	100.0%	2	50.0%	50.0%
Waseca	6	100.0%	100.0%	7	57.1%	71.4%	1	0.0%	100.0%
Washington	24	75.0%	75.0%	15	80.0%	80.0%	19	73.7%	94.7%
Watonwan	0			1	100.0%	100.0%	1	100.0%	100.0%
Wilkin	2	100.0%	200.0%	0			1	100.0%	100.0%
Winona	5	80.0%	100.0%	4	75.0%	100.0%	8	75.0%	62.5%
Wright	11	63.6%	9.1%	10	90.0%	60.0%	8	50.0%	62.5%
Yellow Medicine	1	100.0%	0.0%	0			1	100.0%	100.0%

Fifth and Twelfth Month Status of Monthly DWP Case Cohorts - January, February, and March 2005

County	January 2005 DWP Eligible			February 2005 DWP Eligible			March 2005 DWP Eligible		
	Total Cases in Cohort	Percent Off MFIP Cash in 5th Month	Percent Off MFIP Cash in 12th Month	Total Cases in Cohort	Percent Off MFIP Cash in 5th Month	Percent Off MFIP Cash in 12th Month	Total Cases in Cohort	Percent Off MFIP Cash in 5th Month	Percent Off MFIP Cash in 12th Month
<b>State</b>	1062	59.0%	67.8%	743	64.2%	69.2%	875	63.8%	68.0%
Aitkin	10	80.0%	90.0%	0			3	66.7%	100.0%
Anoka	71	56.3%	76.1%	65	66.2%	67.7%	61	31.1%	31.1%
Becker	6	100.0%	66.7%	7	100.0%	85.7%	7	57.1%	42.9%
Beltrami	22	77.3%	54.5%	15	33.3%	33.3%	24	37.5%	33.3%
Benton	4	75.0%	75.0%	9	66.7%	66.7%	8	25.0%	12.5%
Big Stone	1	100.0%	100.0%	0			0		100.0%
Blue Earth	12	83.3%	75.0%	5	40.0%	40.0%	10	60.0%	40.0%
Brown	8	62.5%	75.0%	2	50.0%	100.0%	4	50.0%	50.0%
Carlton	4	100.0%	100.0%	5	80.0%	80.0%	5	40.0%	40.0%
Carver	4	75.0%	75.0%	2	100.0%	100.0%	4	25.0%	25.0%
Cass	12	58.3%	58.3%	15	53.3%	60.0%	10	50.0%	20.0%
Chippewa	4	50.0%	100.0%	0			0		100.0%
Chisago	8	50.0%	50.0%	4	100.0%	100.0%	3	33.3%	33.3%
Clay	7	57.1%	71.4%	4	75.0%	50.0%	6	33.3%	16.7%
Clearwater	2	100.0%	100.0%	0			2	50.0%	0.0%
Cook	0			0			0		100.0%
Cottonwood	2	0.0%	0.0%	4	100.0%	100.0%	3	0.0%	
Crow Wing	16	87.5%	81.3%	14	85.7%	57.1%	16	12.5%	31.3%
Dakota	62	71.0%	83.9%	46	69.6%	73.9%	39	20.5%	30.8%
Dodge	4	100.0%	100.0%	1	100.0%	0.0%	2	0.0%	
Douglas	5	80.0%	80.0%	1	100.0%	100.0%	5	40.0%	0.0%
Faribault	3	100.0%	100.0%	2	50.0%	50.0%	9	22.2%	22.2%
Fillmore	8	62.5%	75.0%	5	80.0%	80.0%	2	0.0%	
Freeborn	11	45.5%	63.6%	6	83.3%	100.0%	4	50.0%	50.0%
Goodhue	7	71.4%	57.1%	7	100.0%	85.7%	7	28.6%	28.6%
Grant	0			0			2	50.0%	50.0%
Hennepin	205	49.3%	63.4%	136	61.0%	68.4%	199	47.7%	37.2%
Houston	6	66.7%	66.7%	3	100.0%	100.0%	2	50.0%	50.0%
Hubbard	3	33.3%	0.0%	1	100.0%	0.0%	3	66.7%	33.3%
Isanti	13	76.9%	76.9%	10	80.0%	80.0%	9	11.1%	22.2%
Itasca	3	66.7%	66.7%	4	50.0%	100.0%	12	33.3%	8.3%
Jackson	2	100.0%	100.0%	0			1	100.0%	100.0%
Kanabec	4	75.0%	100.0%	5	100.0%	100.0%	4	0.0%	
Kandiyohi	17	58.8%	41.2%	6	66.7%	83.3%	9	33.3%	11.1%
Kittson	0			0			0		100.0%
Koochiching	5	80.0%	60.0%	1	100.0%	100.0%	4	25.0%	25.0%
Lac qui Parle	0			0			0		100.0%
Lake	3	100.0%	100.0%	0			0		100.0%
Lake of the Woods	1	100.0%	100.0%	0			0		100.0%
LeSueur	4	100.0%	25.0%	3	100.0%	100.0%	5	0.0%	
Lincoln	1	100.0%	100.0%	0			0		100.0%
Lyon	7	85.7%	85.7%	4	25.0%	75.0%	5	40.0%	40.0%
Mcleod	11	81.8%	81.8%	4	75.0%	75.0%	2	0.0%	
Mahnomen	3	66.7%	100.0%	1	100.0%	100.0%	2	100.0%	50.0%
Marshall	3	100.0%	66.7%	0			2	0.0%	
Martin	6	83.3%	83.3%	6	50.0%	66.7%	3	0.0%	
Meeker	3	66.7%	66.7%	3	33.3%	66.7%	4	50.0%	25.0%

Fifth and Twelfth Month Status of Monthly DWP Case Cohorts - January, February, and March 2005

County	January 2005 DWP Eligible			February 2005 DWP Eligible			March 2005 DWP Eligible		
	Total Cases in Cohort	Percent Off MFIP Cash in 5th Month	Percent Off MFIP Cash in 12th Month	Total Cases in Cohort	Percent Off MFIP Cash in 5th Month	Percent Off MFIP Cash in 12th Month	Total Cases in Cohort	Percent Off MFIP Cash in 5th Month	Percent Off MFIP Cash in 12th Month
Mille Lacs	2	100.0%	50.0%	2	100.0%	100.0%	3	0.0%	
Morrison	4	100.0%	75.0%	2	100.0%	100.0%	3	33.3%	33.3%
Mower	9	77.8%	44.4%	7	85.7%	85.7%	6	0.0%	
Murray	1	100.0%	100.0%	0			0		100.0%
Nicollet	9	77.8%	100.0%	2	50.0%	50.0%	5	60.0%	20.0%
Nobles	9	44.4%	66.7%	5	80.0%	60.0%	1	0.0%	
Norman	3	0.0%	33.3%	3	100.0%	100.0%	1	0.0%	
Olmsted	34	61.8%	76.5%	21	57.1%	76.2%	29	27.6%	27.6%
Otter Tail	10	70.0%	70.0%	5	100.0%	80.0%	15	20.0%	20.0%
Pennington	1	0.0%	0.0%	2	100.0%	100.0%	2	50.0%	50.0%
Pine	9	44.4%	44.4%	6	83.3%	100.0%	7	0.0%	
Pipestone	4	100.0%	100.0%	5	60.0%	100.0%	4	50.0%	25.0%
Polk	9	66.7%	100.0%	3	66.7%	33.3%	10	10.0%	0.0%
Pope	0			2	50.0%	0.0%	3	0.0%	
Ramsey	178	38.8%	51.1%	110	40.0%	50.0%	108	51.9%	50.9%
Red Lake	2	50.0%	100.0%	1	100.0%	100.0%	3	0.0%	
Redwood	3	66.7%	66.7%	1	0.0%	0.0%	1	0.0%	
Renville	2	50.0%	50.0%	2	0.0%	50.0%	4	0.0%	
Rice	10	50.0%	90.0%	5	20.0%	40.0%	20	50.0%	25.0%
Rock	1	100.0%	0.0%	1	0.0%	0.0%	1	0.0%	
Roseau	1	0.0%	0.0%	1	100.0%	100.0%	2	50.0%	0.0%
St. Louis	38	57.9%	68.4%	31	74.2%	74.2%	34	23.5%	23.5%
Scott	15	46.7%	66.7%	8	50.0%	75.0%	11	27.3%	36.4%
Sherburne	9	66.7%	88.9%	8	75.0%	62.5%	9	0.0%	
Sibley	2	50.0%	50.0%	3	33.3%	66.7%	3	33.3%	0.0%
Stearns	18	55.6%	77.8%	29	89.7%	93.1%	22	31.8%	36.4%
Steele	9	88.9%	77.8%	6	66.7%	66.7%	4	0.0%	
Stevens	0			0			0		100.0%
Swift	1	0.0%	0.0%	1	100.0%	0.0%	0		100.0%
Todd	5	40.0%	60.0%	4	50.0%	75.0%	0		100.0%
Traverse	2	50.0%	100.0%	1	0.0%	100.0%	1	0.0%	
Wabasha	3	66.7%	100.0%	4	75.0%	75.0%	8	25.0%	25.0%
Wadena	7	100.0%	100.0%	6	83.3%	66.7%	3	100.0%	66.7%
Waseca	8	62.5%	75.0%	5	80.0%	100.0%	2	100.0%	0.0%
Washington	24	66.7%	62.5%	23	65.2%	69.6%	30	36.7%	30.0%
Watonwan	7	71.4%	85.7%	0			2	0.0%	
Wilkin	0			1	0.0%	0.0%	1	0.0%	
Winona	6	83.3%	100.0%	5	60.0%	80.0%	7	42.9%	57.1%
Wright	13	76.9%	76.9%	15	86.7%	93.3%	7	42.9%	28.6%
Yellow Medicine	1	100.0%	100.0%	1	100.0%	100.0%	1	0.0%	

Fifth and Twelfth Month Status of Monthly DWP Case Cohorts - April, May, and June 2005

County	April 2005 DWP Eligible			May 2005 DWP Eligible			June 2005 DWP Eligible		
	Total Cases in Cohort	Percent Off MFIP Cash in 5th Month	Percent Off MFIP Cash in 12th Month	Total Cases in Cohort	Percent Off MFIP Cash in 5th Month	Percent Off MFIP Cash in 12th Month	Total Cases in Cohort	Percent Off MFIP Cash in 5th Month	Percent Off MFIP Cash in 12th Month
<b>State</b>	993	61.0%	66.8%	915	64.2%	71.6%	1075	64.1%	68.7%
Aitkin	5	40.0%	80.0%	3	66.7%	66.7%	4	50.0%	100.0%
Anoka	74	67.6%	63.5%	70	70.0%	72.9%	70	65.7%	61.4%
Becker	10	100.0%	90.0%	9	55.6%	55.6%	6	83.3%	100.0%
Beltrami	20	45.0%	50.0%	29	48.3%	72.4%	21	57.1%	57.1%
Benton	4	50.0%	75.0%	7	71.4%	42.9%	13	76.9%	76.9%
Big Stone	1	100.0%	100.0%	1	0.0%	100.0%	1	0.0%	0.0%
Blue Earth	10	70.0%	80.0%	10	50.0%	60.0%	15	53.3%	66.7%
Brown	1	100.0%	100.0%	4	100.0%	100.0%	10	80.0%	90.0%
Carlton	7	42.9%	71.4%	2	50.0%	50.0%	7	42.9%	71.4%
Carver	4	75.0%	100.0%	7	85.7%	85.7%	4	50.0%	75.0%
Cass	11	45.5%	54.5%	9	55.6%	77.8%	5	60.0%	100.0%
Chippewa	2	100.0%	100.0%	4	75.0%	75.0%	0		
Chisago	12	66.7%	75.0%	3	66.7%	66.7%	6	66.7%	66.7%
Clay	6	83.3%	66.7%	17	82.4%	82.4%	12	66.7%	91.7%
Clearwater	3	66.7%	100.0%	1	100.0%	100.0%	2	50.0%	100.0%
Cook	0			1	100.0%	0.0%	0		
Cottonwood	3	66.7%	66.7%	3	100.0%	100.0%	1	100.0%	100.0%
Crow Wing	10	80.0%	80.0%	13	69.2%	61.5%	16	81.3%	81.3%
Dakota	59	54.2%	62.7%	50	74.0%	78.0%	55	74.5%	63.6%
Dodge	1	100.0%	100.0%	5	100.0%	100.0%	1	0.0%	100.0%
Douglas	5	80.0%	40.0%	2	100.0%	50.0%	0		
Faribault	3	66.7%	66.7%	0			4	100.0%	100.0%
Fillmore	2	0.0%	0.0%	5	100.0%	80.0%	0		
Freeborn	5	80.0%	60.0%	13	84.6%	76.9%	5	100.0%	100.0%
Goodhue	6	100.0%	100.0%	10	70.0%	70.0%	5	40.0%	60.0%
Grant	1	100.0%	100.0%	2	50.0%	50.0%	5	100.0%	100.0%
Hennepin	211	55.0%	61.6%	189	53.4%	64.6%	243	55.1%	58.4%
Houston	2	50.0%	50.0%	8	87.5%	100.0%	6	83.3%	83.3%
Hubbard	4	100.0%	75.0%	3	66.7%	100.0%	5	80.0%	80.0%
Isanti	13	69.2%	61.5%	3	100.0%	100.0%	12	91.7%	91.7%
Itasca	8	62.5%	62.5%	6	50.0%	66.7%	8	87.5%	87.5%
Jackson	2	50.0%	50.0%	1	0.0%	100.0%	1	100.0%	100.0%
Kanabec	6	50.0%	66.7%	3	66.7%	100.0%	6	83.3%	50.0%
Kandiyohi	10	50.0%	100.0%	10	70.0%	80.0%	20	85.0%	70.0%
Kittson	1	100.0%	100.0%	0			0		
Koochiching	2	100.0%	100.0%	0			2	50.0%	0.0%
Lac qui Parle	2	100.0%	100.0%	0			2	100.0%	100.0%
Lake	1	100.0%	100.0%	1	100.0%	100.0%	2	50.0%	100.0%
Lake of the Woods	0			0			1	100.0%	100.0%
LeSueur	5	60.0%	100.0%	3	100.0%	66.7%	7	100.0%	100.0%
Lincoln	0			0			0		
Lyon	1	0.0%	100.0%	3	100.0%	100.0%	7	71.4%	57.1%
Mcleod	12	75.0%	75.0%	10	90.0%	90.0%	7	85.7%	85.7%
Mahnomen	4	50.0%	75.0%	2	100.0%	100.0%	7	42.9%	71.4%
Marshall	1	100.0%	100.0%	0			3	66.7%	66.7%
Martin	2	100.0%	100.0%	5	40.0%	80.0%	4	100.0%	100.0%
Meeker	6	66.7%	66.7%	3	0.0%	66.7%	6	100.0%	83.3%

Fifth and Twelfth Month Status of Monthly DWP Case Cohorts - April, May, and June 2005

County	April 2005 DWP Eligible			May 2005 DWP Eligible			June 2005 DWP Eligible		
	Total Cases in Cohort	Percent Off MFIP Cash in 5th Month	Percent Off MFIP Cash in 12th Month	Total Cases in Cohort	Percent Off MFIP Cash in 5th Month	Percent Off MFIP Cash in 12th Month	Total Cases in Cohort	Percent Off MFIP Cash in 5th Month	Percent Off MFIP Cash in 12th Month
Mille Lacs	4	75.0%	75.0%	4	100.0%	100.0%	5	100.0%	80.0%
Morrison	5	100.0%	80.0%	2	100.0%	100.0%	5	80.0%	40.0%
Mower	15	53.3%	46.7%	16	62.5%	87.5%	18	77.8%	83.3%
Murray	0			0			0		
Nicollet	7	57.1%	71.4%	6	83.3%	83.3%	4	25.0%	75.0%
Nobles	4	75.0%	100.0%	2	0.0%	50.0%	5	80.0%	80.0%
Norman	2	50.0%	0.0%	3	66.7%	100.0%	2	50.0%	50.0%
Olmsted	30	56.7%	66.7%	33	72.7%	87.9%	46	58.7%	71.7%
Otter Tail	8	62.5%	87.5%	7	57.1%	71.4%	13	69.2%	100.0%
Pennington	3	66.7%	66.7%	1	0.0%	0.0%	1	0.0%	100.0%
Pine	12	41.7%	66.7%	6	66.7%	100.0%	4	50.0%	75.0%
Pipestone	2	100.0%	50.0%	5	60.0%	60.0%	5	40.0%	80.0%
Polk	7	85.7%	85.7%	6	33.3%	50.0%	17	82.4%	88.2%
Pope	1	100.0%	100.0%	3	100.0%	0.0%	3	66.7%	66.7%
Ramsey	149	47.0%	53.0%	123	54.5%	61.8%	154	47.4%	51.9%
Red Lake	0			0			0		
Redwood	3	66.7%	100.0%	1	100.0%	100.0%	2	50.0%	50.0%
Renville	3	100.0%	100.0%	3	66.7%	100.0%	12	83.3%	83.3%
Rice	5	40.0%	80.0%	9	66.7%	77.8%	10	30.0%	70.0%
Rock	0			0			1	100.0%	100.0%
Roseau	0			0			1	100.0%	100.0%
St. Louis	48	64.6%	72.9%	37	54.1%	62.2%	29	62.1%	82.8%
Scott	12	83.3%	83.3%	8	37.5%	87.5%	10	50.0%	60.0%
Sherburne	9	77.8%	77.8%	7	71.4%	57.1%	12	66.7%	91.7%
Sibley	2	50.0%	100.0%	1	100.0%	0.0%	5	100.0%	100.0%
Stearns	23	73.9%	73.9%	29	72.4%	79.3%	26	80.8%	84.6%
Steele	8	87.5%	87.5%	5	80.0%	60.0%	8	87.5%	100.0%
Stevens	0			0			1	100.0%	0.0%
Swift	3	100.0%	100.0%	2	50.0%	50.0%	0		
Todd	5	100.0%	100.0%	3	100.0%	66.7%	2	50.0%	50.0%
Traverse	2	100.0%	100.0%	4	100.0%	100.0%	2	50.0%	100.0%
Wabasha	4	100.0%	100.0%	7	85.7%	85.7%	2	100.0%	50.0%
Wadena	7	42.9%	71.4%	3	66.7%	66.7%	4	50.0%	75.0%
Waseca	4	100.0%	100.0%	4	100.0%	100.0%	8	75.0%	62.5%
Washington	32	71.9%	68.8%	20	85.0%	70.0%	15	86.7%	73.3%
Watsonwan	1	100.0%	100.0%	2	50.0%	100.0%	2	100.0%	100.0%
Wilkin	0			4	100.0%	100.0%	4	100.0%	100.0%
Winona	3	66.7%	66.7%	8	37.5%	62.5%	6	50.0%	66.7%
Wright	12	50.0%	75.0%	11	63.6%	81.8%	14	78.6%	92.9%
Yellow Medicine	0			0			0		

Fifth and Twelfth Month Status of Monthly DWP Case Cohorts - July, August, and September 2005

County	July 2005 DWP Eligible			August 2005 DWP Eligible			September 2005 DWP Eligible		
	Total Cases in Cohort	Percent Off MFIP Cash in 5th Month	Percent Off MFIP Cash in 12th Month	Total Cases in Cohort	Percent Off MFIP Cash in 5th Month	Percent Off MFIP Cash in 12th Month	Total Cases in Cohort	Percent Off MFIP Cash in 5th Month	Percent Off MFIP Cash in 12th Month
State	1174	60.8%	65.8%	1278	60.3%	66.3%	1266	61.6%	70.1%
Aitkin	5	80.0%	60.0%	3	100.0%	66.7%	1	100.0%	100.0%
Anoka	77	77.9%	79.2%	100	68.0%	70.0%	90	70.0%	80.0%
Becker	6	83.3%	83.3%	13	76.9%	92.3%	12	66.7%	75.0%
Beltrami	27	77.8%	70.4%	28	42.9%	67.9%	26	65.4%	69.2%
Benton	6	83.3%	100.0%	7	42.9%	85.7%	7	71.4%	85.7%
Big Stone	0			1	100.0%	100.0%	0		0.0%
Blue Earth	17	70.6%	70.6%	19	68.4%	52.6%	20	75.0%	70.0%
Brown	3	33.3%	66.7%	7	71.4%	85.7%	2	50.0%	100.0%
Carlton	7	57.1%	57.1%	8	87.5%	62.5%	3	100.0%	66.7%
Carver	5	60.0%	60.0%	7	85.7%	85.7%	6	66.7%	100.0%
Cass	10	60.0%	60.0%	16	68.8%	68.8%	18	50.0%	66.7%
Chippewa	1	0.0%	100.0%	5	100.0%	100.0%	2	50.0%	100.0%
Chisago	10	60.0%	80.0%	10	80.0%	70.0%	11	63.6%	63.6%
Clay	14	64.3%	64.3%	8	25.0%	62.5%	8	75.0%	50.0%
Clearwater	2	50.0%	100.0%	2	100.0%	100.0%	1	100.0%	100.0%
Cook	0			0	0.0%		0		0.0%
Cottonwood	3	100.0%	66.7%	6	66.7%	33.3%	3	66.7%	66.7%
Crow Wing	12	66.7%	83.3%	13	69.2%	69.2%	8	62.5%	75.0%
Dakota	43	76.7%	79.1%	64	75.0%	79.7%	82	78.0%	82.9%
Dodge	1	100.0%	100.0%	3	66.7%	100.0%	3	100.0%	100.0%
Douglas	8	87.5%	75.0%	3	100.0%	100.0%	7	100.0%	85.7%
Faribault	3	100.0%	100.0%	0		0.0%	2	50.0%	50.0%
Fillmore	1	100.0%	0.0%	7	57.1%	85.7%	3	66.7%	100.0%
Freeborn	10	50.0%	50.0%	12	66.7%	100.0%	8	62.5%	100.0%
Goodhue	4	25.0%	75.0%	8	75.0%	100.0%	9	66.7%	77.8%
Grant	0			3	100.0%	100.0%	1	100.0%	100.0%
Hennepin	275	55.6%	60.7%	295	50.2%	54.2%	309	56.0%	63.4%
Houston	1	100.0%	100.0%	5	60.0%	100.0%	6	33.3%	33.3%
Hubbard	7	57.1%	42.9%	5	80.0%	60.0%	3	66.7%	100.0%
Isanti	8	75.0%	87.5%	10	50.0%	80.0%	11	72.7%	81.8%
Itasca	9	88.9%	88.9%	8	75.0%	75.0%	3	100.0%	66.7%
Jackson	2	50.0%	50.0%	2	50.0%	100.0%	3	100.0%	100.0%
Kanabec	8	62.5%	75.0%	6	50.0%	66.7%	7	57.1%	57.1%
Kandiyohi	20	65.0%	85.0%	17	76.5%	76.5%	12	58.3%	66.7%
Kittson	0			0		0.0%	0		0.0%
Koochiching	1	0.0%	100.0%	5	60.0%	100.0%	2	100.0%	100.0%
Lac qui Parle	0			0		0.0%	0		0.0%
Lake	0			1	100.0%	100.0%	1	0.0%	
Lake of the Woods	1	100.0%	100.0%	0		0.0%	0		0.0%
LeSueur	7	85.7%	71.4%	5	80.0%	60.0%	6	50.0%	50.0%
Lincoln	1	100.0%	0.0%	0		0.0%	3	33.3%	100.0%
Lyon	2	100.0%	50.0%	6	66.7%	83.3%	6	66.7%	83.3%
Mcleod	11	72.7%	90.9%	6	100.0%	50.0%	11	72.7%	90.9%
Mahnomen	3	33.3%	33.3%	5	20.0%	40.0%	0		0.0%
Marshall	2	0.0%	100.0%	0		0.0%	0		0.0%
Martin	7	42.9%	85.7%	7	57.1%	85.7%	7	85.7%	100.0%
Meeker	4	75.0%	75.0%	7	57.1%	100.0%	2	50.0%	100.0%

Fifth and Twelfth Month Status of Monthly DWP Case Cohorts - July, August, and September 2005

County	July 2005 DWP Eligible			August 2005 DWP Eligible			September 2005 DWP Eligible		
	Total Cases in Cohort	Percent Off MFIP Cash in 5th Month	Percent Off MFIP Cash in 12th Month	Total Cases in Cohort	Percent Off MFIP Cash in 5th Month	Percent Off MFIP Cash in 12th Month	Total Cases in Cohort	Percent Off MFIP Cash in 5th Month	Percent Off MFIP Cash in 12th Month
Mille Lacs	3	66.7%	66.7%	4	50.0%	50.0%	4	50.0%	75.0%
Morrison	5	0.0%	80.0%	9	88.9%	88.9%	6	50.0%	83.3%
Mower	13	76.9%	84.6%	9	44.4%	44.4%	10	60.0%	80.0%
Murray	0			1	0.0%		2	50.0%	50.0%
Nicollet	10	40.0%	60.0%	8	87.5%	87.5%	8	75.0%	50.0%
Nobles	0			4	25.0%	75.0%	6	33.3%	50.0%
Norman	4	100.0%	75.0%	1	100.0%	100.0%	6	83.3%	83.3%
Olmsted	34	85.3%	85.3%	54	63.0%	83.3%	36	66.7%	77.8%
Otter Tail	9	100.0%	55.6%	10	70.0%	80.0%	17	58.8%	82.4%
Pennington	3	66.7%	66.7%	3	66.7%	66.7%	2	100.0%	100.0%
Pine	9	55.6%	55.6%	6	83.3%	100.0%	8	37.5%	50.0%
Pipestone	5	80.0%	80.0%	3	66.7%	66.7%	3	100.0%	100.0%
Polk	7	100.0%	100.0%	10	60.0%	70.0%	10	70.0%	70.0%
Pope	3	100.0%	66.7%	1	100.0%	100.0%	2	100.0%	0.0%
Ramsey	209	40.2%	45.0%	211	43.1%	47.4%	202	48.0%	60.4%
Red Lake	1	100.0%	0.0%	3	100.0%	100.0%	0		0.0%
Redwood	4	50.0%	75.0%	3	66.7%	66.7%	3	100.0%	100.0%
Renville	2	0.0%	50.0%	5	80.0%	80.0%	7	71.4%	42.9%
Rice	16	50.0%	75.0%	22	59.1%	77.3%	11	81.8%	72.7%
Rock	4	100.0%	100.0%	1	0.0%		3	33.3%	66.7%
Roseau	0			2	100.0%	100.0%	1	100.0%	100.0%
St. Louis	45	44.4%	53.3%	37	62.2%	75.7%	46	67.4%	65.2%
Scott	16	75.0%	93.8%	17	70.6%	52.9%	15	60.0%	80.0%
Sherburne	13	92.3%	84.6%	14	92.9%	85.7%	18	77.8%	72.2%
Sibley	2	50.0%	100.0%	3	100.0%	66.7%	4	75.0%	75.0%
Stearns	24	58.3%	66.7%	31	71.0%	74.2%	23	73.9%	82.6%
Steele	11	72.7%	81.8%	6	83.3%	83.3%	9	55.6%	77.8%
Stevens	0			0		0.0%	1	0.0%	
Swift	2	100.0%	100.0%	3	100.0%	100.0%	1	100.0%	100.0%
Todd	2	50.0%	100.0%	2	100.0%	50.0%	9	55.6%	88.9%
Traverse	3	100.0%	33.3%	1	100.0%	100.0%	0		0.0%
Wabasha	5	60.0%	60.0%	2	50.0%	100.0%	2	0.0%	
Wadena	4	50.0%	50.0%	1	0.0%		6	66.7%	66.7%
Waseca	8	75.0%	62.5%	4	50.0%	75.0%	3	33.3%	100.0%
Washington	24	79.2%	87.5%	13	76.9%	69.2%	23	60.9%	56.5%
Watsonwan	2	0.0%	0.0%	0		0.0%	2	50.0%	100.0%
Wilkin	5	80.0%	80.0%	5	80.0%	100.0%	0		0.0%
Winona	6	33.3%	83.3%	11	81.8%	81.8%	14	50.0%	64.3%
Wright	17	70.6%	70.6%	15	80.0%	73.3%	16	62.5%	81.3%
Yellow Medicine	0			0		0.0%	2	100.0%	100.0%

Fifth and Twelfth Month Status of Monthly DWP Case Cohorts - October, November, and December 2005

County	October 2005 DWP Eligible			November 2005 DWP Eligible			December 2005 DWP Eligible		
	Total Cases in Cohort	Percent Off MFIP Cash in 5th Month	Percent Off MFIP Cash in 12th Month	Total Cases in Cohort	Percent Off MFIP Cash in 5th Month	Percent Off MFIP Cash in 12th Month	Total Cases in Cohort	Percent Off MFIP Cash in 5th Month	Percent Off MFIP Cash in 12th Month
State	1215	58.3%	61.5%	1023	63.6%	66.2%	1055	61.6%	66.9%
Aitkin	3	66.7%	33.3%	3	66.7%	100.0%	5	40.0%	40.0%
Anoka	83	60.2%	66.3%	56	69.6%	67.9%	77	71.4%	72.7%
Becker	11	72.7%	90.9%	7	71.4%	57.1%	5	20.0%	60.0%
Beltrami	22	54.5%	54.5%	24	54.2%	62.5%	17	64.7%	64.7%
Benton	6	100.0%	100.0%	9	55.6%	77.8%	13	76.9%	84.6%
Big Stone	1	100.0%	100.0%	0			2	50.0%	100.0%
Blue Earth	16	81.3%	81.3%	5	60.0%	60.0%	12	58.3%	91.7%
Brown	3	33.3%	100.0%	1	100.0%	0.0%	4	75.0%	75.0%
Carlton	8	75.0%	75.0%	8	62.5%	75.0%	5	60.0%	60.0%
Carver	4	100.0%	50.0%	12	91.7%	83.3%	4	75.0%	50.0%
Cass	10	70.0%	70.0%	13	61.5%	69.2%	12	66.7%	75.0%
Chippewa	2	50.0%	50.0%	3	66.7%	66.7%	2	100.0%	50.0%
Chisago	10	60.0%	70.0%	14	78.6%	78.6%	12	50.0%	75.0%
Clay	17	52.9%	64.7%	12	66.7%	58.3%	16	87.5%	81.3%
Clearwater	6	83.3%	66.7%	2	50.0%	50.0%	0		
Cook	0			0			0		
Cottonwood	4	75.0%	75.0%	3	66.7%	66.7%	4	50.0%	100.0%
Crow Wing	20	70.0%	85.0%	17	70.6%	76.5%	22	81.8%	77.3%
Dakota	60	78.3%	71.7%	57	84.2%	75.4%	66	74.2%	71.2%
Dodge	2	100.0%	50.0%	4	100.0%	100.0%	4	75.0%	100.0%
Douglas	6	83.3%	100.0%	3	33.3%	66.7%	7	57.1%	71.4%
Faribault	1	100.0%	100.0%	1	100.0%	100.0%	1	100.0%	100.0%
Fillmore	2	100.0%	50.0%	5	80.0%	60.0%	4	50.0%	75.0%
Freeborn	8	50.0%	87.5%	8	100.0%	75.0%	11	45.5%	54.5%
Goodhue	10	70.0%	80.0%	5	80.0%	80.0%	11	54.5%	81.8%
Grant	0			0			0		
Hennepin	299	52.8%	54.5%	207	55.6%	53.6%	219	47.0%	52.5%
Houston	4	75.0%	100.0%	4	75.0%	75.0%	3	66.7%	66.7%
Hubbard	4	75.0%	50.0%	4	100.0%	75.0%	2	100.0%	100.0%
Isanti	15	86.7%	73.3%	8	62.5%	37.5%	10	80.0%	80.0%
Itasca	9	66.7%	66.7%	7	28.6%	71.4%	10	100.0%	80.0%
Jackson	2	100.0%	100.0%	1	100.0%	100.0%	7	100.0%	71.4%
Kanabec	5	60.0%	40.0%	3	0.0%	100.0%	6	50.0%	83.3%
Kandiyohi	19	57.9%	78.9%	20	55.0%	75.0%	8	50.0%	75.0%
Kittson	0			0			1	0.0%	0.0%
Koochiching	5	80.0%	80.0%	3	100.0%	100.0%	2	0.0%	50.0%
Lac qui Parle	0			2	50.0%	100.0%	1	0.0%	100.0%
Lake	1	100.0%	100.0%	2	50.0%	50.0%	3	33.3%	33.3%
Lake of the Woods	0			0			0		
LeSueur	9	77.8%	77.8%	4	50.0%	50.0%	4	75.0%	75.0%
Lincoln	1	0.0%	100.0%	2	100.0%	100.0%	0		
Lyon	3	33.3%	100.0%	4	100.0%	75.0%	4	100.0%	100.0%
Mcleod	4	100.0%	100.0%	6	100.0%	83.3%	4	75.0%	50.0%
Mahnomen	1	100.0%	100.0%	3	100.0%	100.0%	3	33.3%	66.7%
Marshall	3	33.3%	66.7%	1	100.0%	100.0%	1	100.0%	100.0%
Martin	7	85.7%	85.7%	9	77.8%	77.8%	1	100.0%	100.0%
Meeker	3	33.3%	33.3%	6	66.7%	66.7%	3	33.3%	100.0%



Fifth and Twelfth Month Status of Monthly DWP Case Cohorts - October, November, and December 2005

County	October 2005 DWP Eligible			November 2005 DWP Eligible			December 2005 DWP Eligible		
	Total Cases in Cohort	Percent Off MFIP Cash in 5th Month	Percent Off MFIP Cash in 12th Month	Total Cases in Cohort	Percent Off MFIP Cash in 5th Month	Percent Off MFIP Cash in 12th Month	Total Cases in Cohort	Percent Off MFIP Cash in 5th Month	Percent Off MFIP Cash in 12th Month
Mille Lacs	1	100.0%	100.0%	3	100.0%	100.0%	7	100.0%	100.0%
Morrison	2	100.0%	50.0%	2	50.0%	50.0%	6	100.0%	83.3%
Mower	5	80.0%	80.0%	22	81.8%	86.4%	14	42.9%	57.1%
Murray	1	0.0%	100.0%	1	100.0%	100.0%	3	100.0%	100.0%
Nicollet	3	66.7%	66.7%	4	50.0%	50.0%	7	71.4%	57.1%
Nobles	8	75.0%	87.5%	5	80.0%	80.0%	3	66.7%	33.3%
Norman	3	33.3%	100.0%	3	100.0%	66.7%	4	100.0%	75.0%
Olmsted	41	53.7%	53.7%	45	73.3%	84.4%	32	65.6%	75.0%
Otter Tail	11	72.7%	72.7%	5	80.0%	80.0%	10	60.0%	70.0%
Pennington	2	50.0%	100.0%	6	66.7%	83.3%	5	60.0%	60.0%
Pine	15	46.7%	53.3%	14	42.9%	64.3%	15	53.3%	73.3%
Pipestone	2	100.0%	50.0%	1	100.0%	100.0%	3	100.0%	100.0%
Polk	4	100.0%	100.0%	6	33.3%	50.0%	9	44.4%	66.7%
Pope	2	100.0%	50.0%	0			2	100.0%	100.0%
Ramsey	197	33.5%	40.1%	140	43.6%	51.4%	134	49.3%	58.2%
Red Lake	2	50.0%	50.0%	2	50.0%	50.0%	0		
Redwood	4	50.0%	50.0%	4	50.0%	75.0%	3	66.7%	100.0%
Renville	2	100.0%	100.0%	2	100.0%	100.0%	2	100.0%	100.0%
Rice	13	69.2%	53.8%	14	57.1%	71.4%	17	58.8%	70.6%
Rock	3	33.3%	100.0%	1	0.0%	100.0%	1	0.0%	0.0%
Roseau	2	50.0%	0.0%	0			0		
St. Louis	50	54.0%	54.0%	53	69.8%	69.8%	39	66.7%	74.4%
Scott	11	36.4%	81.8%	13	76.9%	100.0%	5	40.0%	60.0%
Sherburne	10	70.0%	80.0%	11	72.7%	72.7%	13	76.9%	76.9%
Sibley	1	100.0%	100.0%	4	75.0%	100.0%	1	100.0%	0.0%
Stearns	32	78.1%	71.9%	26	61.5%	61.5%	27	77.8%	74.1%
Steele	6	83.3%	83.3%	4	75.0%	75.0%	5	80.0%	60.0%
Stevens	0			0			0		
Swift	3	100.0%	66.7%	2	50.0%	50.0%	1	100.0%	100.0%
Todd	5	80.0%	80.0%	6	83.3%	50.0%	6	66.7%	83.3%
Traverse	2	100.0%	50.0%	1	100.0%	100.0%	1	100.0%	100.0%
Wabasha	5	100.0%	100.0%	5	60.0%	60.0%	3	100.0%	100.0%
Wadena	3	100.0%	66.7%	4	25.0%	75.0%	6	33.3%	33.3%
Waseca	7	71.4%	85.7%	5	60.0%	80.0%	5	80.0%	100.0%
Washington	24	75.0%	66.7%	18	77.8%	83.3%	31	58.1%	61.3%
Watsonwan	2	100.0%	100.0%	2	100.0%	50.0%	0		
Wilkin	0			1	100.0%	0.0%	0		
Winona	7	57.1%	57.1%	1	0.0%	0.0%	9	77.8%	66.7%
Wright	15	53.3%	80.0%	18	72.2%	66.7%	17	94.1%	82.4%
Yellow Medicine	0			1	100.0%	100.0%	1	0.0%	100.0%

Fifth and Twelfth Month Status of Monthly DWP Case Cohorts - January, February, and March 2006

County	January 2006 DWP Eligible			February 2006 DWP Eligible			March 2006 DWP Eligible		
	Total Cases in Cohort	Percent Off MFIP Cash in 5th Month	Percent Off MFIP Cash in 12th Month	Total Cases in Cohort	Percent Off MFIP Cash in 5th Month	Percent Off MFIP Cash in 12th Month	Total Cases in Cohort	Percent Off MFIP Cash in 5th Month	Percent Off MFIP Cash in 12th Month
State	1090	60.9%	67.1%	852	62.1%	66.2%	998	59.7%	66.7%
Aitkin	6	50.0%	66.7%	5	100.0%	100.0%	3	66.7%	33.3%
Anoka	79	75.9%	67.1%	65	70.8%	64.6%	73	64.4%	71.2%
Becker	5	40.0%	40.0%	10	70.0%	60.0%	5	100.0%	100.0%
Beltrami	26	53.8%	57.7%	18	55.6%	61.1%	25	60.0%	56.0%
Benton	10	80.0%	80.0%	4	50.0%	50.0%	5	40.0%	60.0%
Big Stone	0		0.0%	1	100.0%	0.0%	0		0.0%
Blue Earth	7	57.1%	57.1%	9	44.4%	55.6%	13	76.9%	92.3%
Brown	5	60.0%	100.0%	3	66.7%	33.3%	10	70.0%	60.0%
Carlton	8	62.5%	50.0%	2	100.0%	100.0%	4	0.0%	
Carver	8	62.5%	75.0%	2	50.0%	50.0%	4	75.0%	100.0%
Cass	13	53.8%	46.2%	11	45.5%	54.5%	16	37.5%	43.8%
Chippewa	2	100.0%	50.0%	1	100.0%	100.0%	3	100.0%	100.0%
Chisago	8	37.5%	62.5%	11	72.7%	81.8%	4	100.0%	75.0%
Clay	13	69.2%	76.9%	11	72.7%	90.9%	9	55.6%	55.6%
Clearwater	2	50.0%	50.0%	2	100.0%	50.0%	2	100.0%	100.0%
Cook	0		0.0%	0		0.0%	0		0.0%
Cottonwood	4	100.0%	100.0%	1	100.0%	100.0%	1	0.0%	
Crow Wing	15	60.0%	60.0%	15	66.7%	73.3%	13	76.9%	53.8%
Dakota	57	86.0%	82.5%	47	57.4%	72.3%	53	71.7%	73.6%
Dodge	1	100.0%	100.0%	1	100.0%	100.0%	2	100.0%	50.0%
Douglas	9	55.6%	100.0%	3	100.0%	66.7%	6	66.7%	66.7%
Faribault	5	80.0%	60.0%	3	100.0%	100.0%	2	100.0%	100.0%
Fillmore	4	75.0%	100.0%	7	85.7%	71.4%	6	83.3%	100.0%
Freeborn	11	72.7%	63.6%	9	77.8%	77.8%	6	50.0%	50.0%
Goodhue	7	42.9%	71.4%	8	62.5%	37.5%	8	100.0%	75.0%
Grant	1	100.0%	100.0%	1	0.0%		0		0.0%
Hennepin	238	49.2%	52.1%	190	52.6%	56.3%	223	52.0%	61.9%
Houston	4	50.0%	75.0%	4	50.0%	50.0%	9	44.4%	44.4%
Hubbard	4	100.0%	100.0%	2	100.0%	50.0%	3	100.0%	100.0%
Isanti	7	57.1%	57.1%	9	88.9%	66.7%	9	44.4%	66.7%
Itasca	6	83.3%	66.7%	2	100.0%	50.0%	7	28.6%	85.7%
Jackson	3	100.0%	100.0%	2	50.0%	100.0%	0		0.0%
Kanabec	7	57.1%	57.1%	2	100.0%	100.0%	7	57.1%	100.0%
Kandiyohi	12	75.0%	50.0%	13	76.9%	76.9%	8	75.0%	87.5%
Kittson	1	100.0%	100.0%	0		0.0%	0		0.0%
Koochiching	4	50.0%	75.0%	2	100.0%	50.0%	4	50.0%	25.0%
Lac qui Parle	3	100.0%	66.7%	0		0.0%	0		0.0%
Lake	2	100.0%	100.0%	3	100.0%	100.0%	0		0.0%
Lake of the Woods	0		0.0%	0		0.0%	1	100.0%	100.0%
LeSueur	7	71.4%	100.0%	3	100.0%	100.0%	6	66.7%	66.7%
Lincoln	3	66.7%	66.7%	1	100.0%	100.0%	1	100.0%	100.0%
Lyon	5	80.0%	80.0%	3	66.7%	100.0%	4	75.0%	100.0%
Mcleod	5	60.0%	100.0%	6	83.3%	83.3%	5	100.0%	100.0%
Mahnomen	1	0.0%		6	66.7%	66.7%	3	33.3%	66.7%
Marshall	0		0.0%	2	100.0%	100.0%	3	66.7%	33.3%
Martin	1	100.0%	100.0%	4	75.0%	75.0%	4	75.0%	100.0%
Meeker	3	33.3%	66.7%	4	100.0%	100.0%	3	0.0%	

Fifth and Twelfth Month Status of Monthly DWP Case Cohorts - January, February, and March 2006

County	January 2006 DWP Eligible			February 2006 DWP Eligible			March 2006 DWP Eligible		
	Total Cases in Cohort	Percent Off MFIP Cash in 5th Month	Percent Off MFIP Cash in 12th Month	Total Cases in Cohort	Percent Off MFIP Cash in 5th Month	Percent Off MFIP Cash in 12th Month	Total Cases in Cohort	Percent Off MFIP Cash in 5th Month	Percent Off MFIP Cash in 12th Month
Mille Lacs	4	100.0%	75.0%	4	100.0%	75.0%	2	100.0%	100.0%
Morrison	7	57.1%	85.7%	3	66.7%	100.0%	3	33.3%	33.3%
Mower	14	57.1%	50.0%	9	88.9%	77.8%	7	85.7%	71.4%
Murray	0		0.0%	0		0.0%	0		0.0%
Nicollet	5	20.0%	60.0%	3	33.3%	66.7%	8	37.5%	37.5%
Nobles	8	75.0%	75.0%	6	50.0%	100.0%	3	33.3%	66.7%
Norman	2	100.0%	100.0%	0		0.0%	1	100.0%	100.0%
Olmsted	35	54.3%	85.7%	26	73.1%	76.9%	43	58.1%	74.4%
Otter Tail	10	70.0%	70.0%	3	66.7%	66.7%	9	77.8%	44.4%
Pennington	5	100.0%	100.0%	2	100.0%	100.0%	1	100.0%	100.0%
Pine	15	60.0%	66.7%	11	54.5%	81.8%	14	71.4%	71.4%
Pipestone	4	100.0%	100.0%	2	100.0%	100.0%	3	66.7%	66.7%
Polk	8	87.5%	87.5%	4	75.0%	100.0%	1	100.0%	100.0%
Pope	1	100.0%	100.0%	2	50.0%	100.0%	1	100.0%	100.0%
Ramsey	156	45.5%	60.3%	110	49.1%	52.7%	150	46.0%	54.7%
Red Lake	0		0.0%	0		0.0%	2	50.0%	100.0%
Redwood	5	80.0%	60.0%	4	100.0%	100.0%	4	50.0%	100.0%
Renville	5	100.0%	60.0%	5	80.0%	100.0%	7	100.0%	100.0%
Rice	10	60.0%	100.0%	14	28.6%	64.3%	7	85.7%	85.7%
Rock	3	33.3%	100.0%	0		0.0%	2	100.0%	100.0%
Roseau	1	100.0%	100.0%	1	100.0%	100.0%	2	0.0%	
St. Louis	39	61.5%	71.8%	34	52.9%	70.6%	31	61.3%	67.7%
Scott	13	53.8%	69.2%	18	55.6%	66.7%	18	83.3%	72.2%
Sherburne	14	64.3%	78.6%	5	80.0%	100.0%	12	50.0%	83.3%
Sibley	1	100.0%	100.0%	2	50.0%	50.0%	2	100.0%	100.0%
Stearns	19	68.4%	78.9%	25	64.0%	68.0%	25	52.0%	60.0%
Steele	9	55.6%	55.6%	7	85.7%	71.4%	7	85.7%	71.4%
Stevens	0		0.0%	0		0.0%	0		0.0%
Swift	1	0.0%		2	50.0%	100.0%	3	100.0%	100.0%
Todd	10	80.0%	80.0%	9	55.6%	55.6%	3	33.3%	33.3%
Traverse	1	100.0%	100.0%	1	100.0%	0.0%	2	100.0%	100.0%
Wabasha	4	75.0%	100.0%	6	50.0%	50.0%	0		0.0%
Wadena	7	57.1%	85.7%	0		0.0%	3	66.7%	66.7%
Waseca	2	100.0%	100.0%	3	100.0%	100.0%	3	33.3%	400.0%
Washington	17	70.6%	76.5%	13	76.9%	69.2%	18	72.2%	5.6%
Watsonwan	0		0.0%	1	100.0%	100.0%	1	100.0%	0.0%
Wilkin	0		0.0%	0		0.0%	0		0.0%
Winona	10	60.0%	70.0%	3	66.7%	66.7%	10	80.0%	140.0%
Wright	19	84.2%	84.2%	5	80.0%	100.0%	16	68.8%	6.3%
Yellow Medicine	4	75.0%	100.0%	1	100.0%	100.0%	1	100.0%	0.0%

Fifth and Twelfth Month Status of Monthly DWP Case Cohorts - April, May, and June 2006

County	April 2006 DWP Eligible			May 2006 DWP Eligible			June 2006 DWP Eligible		
	Total Cases in Cohort	Percent Off MFIP Cash in 5th Month	Percent Off MFIP Cash in 12th Month	Total Cases in Cohort	Percent Off MFIP Cash in 5th Month	Percent Off MFIP Cash in 12th Month	Total Cases in Cohort	Percent Off MFIP Cash in 5th Month	Percent Off MFIP Cash in 12th Month
State	1070	64.5%	66.4%	1007	61.6%	64.2%	1036	62.2%	64.4%
Aitkin	4	50.0%	75.0%	3	100.0%	66.7%	1	100.0%	100.0%
Anoka	79	68.4%	70.9%	71	64.8%	64.8%	76	65.8%	68.4%
Becker	9	100.0%	77.8%	9	55.6%	66.7%	7	71.4%	57.1%
Beltrami	25	40.0%	48.0%	19	42.1%	63.2%	21	66.7%	61.9%
Benton	3	100.0%	100.0%	11	63.6%	54.5%	9	100.0%	88.9%
Big Stone	1	0.0%		0		0.0%	2	100.0%	50.0%
Blue Earth	8	75.0%	87.5%	5	60.0%	40.0%	11	63.6%	54.5%
Brown	5	100.0%	80.0%	7	85.7%	85.7%	8	75.0%	62.5%
Carlton	4	75.0%	100.0%	5	80.0%	80.0%	7	57.1%	100.0%
Carver	9	100.0%	88.9%	8	87.5%	87.5%	2	50.0%	100.0%
Cass	14	57.1%	71.4%	4	75.0%	75.0%	3	100.0%	100.0%
Chippewa	2	50.0%	50.0%	2	100.0%	100.0%	1	100.0%	100.0%
Chisago	17	82.4%	64.7%	7	71.4%	100.0%	5	60.0%	80.0%
Clay	11	63.6%	72.7%	15	86.7%	80.0%	16	81.3%	93.8%
Clearwater	2	50.0%	100.0%	3	66.7%	33.3%	4	75.0%	75.0%
Cook	0	0.0%	0.0%	1	100.0%	100.0%	0		0.0%
Cottonwood	2	100.0%	100.0%	0		0.0%	4	100.0%	75.0%
Crow Wing	14	64.3%	78.6%	15	66.7%	73.3%	17	58.8%	64.7%
Dakota	58	70.7%	79.3%	56	76.8%	67.9%	50	64.0%	66.0%
Dodge	2	100.0%	100.0%	4	50.0%	100.0%	1	100.0%	100.0%
Douglas	7	85.7%	100.0%	3	100.0%	100.0%	10	100.0%	90.0%
Faribault	4	100.0%	100.0%	0		0.0%	5	60.0%	80.0%
Fillmore	2	100.0%	0.0%	4	75.0%	75.0%	2	100.0%	100.0%
Freeborn	6	100.0%	100.0%	8	75.0%	75.0%	8	12.5%	75.0%
Goodhue	9	66.7%	66.7%	2	100.0%	100.0%	10	70.0%	70.0%
Grant	0		0.0%	0		0.0%	0		0.0%
Hennepin	271	54.6%	56.8%	251	49.4%	55.0%	273	49.1%	51.3%
Houston	1	100.0%	100.0%	6	16.7%	50.0%	1	0.0%	
Hubbard	3	100.0%	100.0%	3	66.7%	66.7%	1	0.0%	
Isanti	7	85.7%	57.1%	4	100.0%	100.0%	9	77.8%	88.9%
Itasca	10	40.0%	70.0%	6	83.3%	83.3%	8	62.5%	50.0%
Jackson	3	66.7%	66.7%	3	66.7%	100.0%	3	66.7%	100.0%
Kanabec	5	80.0%	60.0%	3	0.0%		2	100.0%	100.0%
Kandiyohi	8	37.5%	87.5%	11	63.6%	81.8%	14	50.0%	78.6%
Kittson	1	0.0%		1	100.0%	100.0%	2	100.0%	50.0%
Koochiching	5	60.0%	60.0%	0		0.0%	3	66.7%	66.7%
Lac qui Parle	0		0.0%	0		0.0%	0		0.0%
Lake	1	100.0%	100.0%	3	66.7%	100.0%	2	100.0%	100.0%
Lake of the Woods	0		0.0%	2	100.0%	100.0%	0		0.0%
LeSueur	7	57.1%	71.4%	3	100.0%	33.3%	4	100.0%	100.0%
Lincoln	0		0.0%	0		0.0%	0		0.0%
Lyon	1	100.0%	100.0%	6	50.0%	50.0%	5	80.0%	80.0%
Mcleod	6	50.0%	33.3%	4	50.0%	50.0%	5	80.0%	80.0%
Mahnomen	5	80.0%	80.0%	5	80.0%	60.0%	3	33.3%	66.7%
Marshall	2	100.0%	100.0%	0		0.0%	1	100.0%	100.0%
Martin	5	100.0%	80.0%	3	100.0%	100.0%	5	80.0%	80.0%
Meeker	3	100.0%	100.0%	4	25.0%	50.0%	5	100.0%	80.0%

Fifth and Twelfth Month Status of Monthly DWP Case Cohorts - April, May, and June 2006

County	April 2006 DWP Eligible			May 2006 DWP Eligible			June 2006 DWP Eligible		
	Total Cases in Cohort	Percent Off MFIP Cash in 5th Month	Percent Off MFIP Cash in 12th Month	Total Cases in Cohort	Percent Off MFIP Cash in 5th Month	Percent Off MFIP Cash in 12th Month	Total Cases in Cohort	Percent Off MFIP Cash in 5th Month	Percent Off MFIP Cash in 12th Month
Mille Lacs	6	83.3%	66.7%	6	50.0%	83.3%	4	100.0%	75.0%
Morrison	3	66.7%	33.3%	1	100.0%	0.0%	3	33.3%	33.3%
Mower	7	85.7%	85.7%	12	66.7%	58.3%	15	86.7%	80.0%
Murray	1	100.0%	100.0%	1	100.0%	0.0%	0		0.0%
Nicollet	5	100.0%	100.0%	7	42.9%	71.4%	6	66.7%	66.7%
Nobles	2	100.0%	100.0%	4	75.0%	75.0%	4	75.0%	75.0%
Norman	1	100.0%	0.0%	2	100.0%	100.0%	2	50.0%	50.0%
Olmsted	38	65.8%	65.8%	29	55.2%	72.4%	36	63.9%	61.1%
Otter Tail	8	87.5%	50.0%	9	77.8%	55.6%	10	70.0%	80.0%
Pennington	3	66.7%	66.7%	8	87.5%	87.5%	1	100.0%	0.0%
Pine	11	90.9%	90.9%	8	50.0%	75.0%	5	60.0%	60.0%
Pipestone	6	66.7%	66.7%	3	100.0%	100.0%	5	80.0%	60.0%
Polk	8	87.5%	87.5%	5	60.0%	100.0%	8	87.5%	75.0%
Pope	0		0.0%	1	0.0%		1	100.0%	100.0%
Ramsey	140	48.6%	54.3%	152	50.7%	56.6%	155	51.6%	56.8%
Red Lake	0		0.0%	0		0.0%	1	0.0%	
Redwood	4	50.0%	100.0%	1	100.0%	100.0%	1	100.0%	100.0%
Renville	2	100.0%	50.0%	7	100.0%	100.0%	5	100.0%	100.0%
Rice	17	70.6%	76.5%	18	61.1%	61.1%	10	40.0%	50.0%
Rock	0		0.0%	2	50.0%	50.0%	1	100.0%	0.0%
Roseau	2	50.0%	50.0%	2	50.0%	50.0%	0		0.0%
St. Louis	41	80.5%	68.3%	33	69.7%	78.8%	31	80.6%	80.6%
Scott	11	72.7%	63.6%	12	75.0%	58.3%	14	78.6%	64.3%
Sherburne	11	81.8%	63.6%	5	80.0%	60.0%	7	85.7%	71.4%
Sibley	2	0.0%		2	100.0%	100.0%	6	66.7%	100.0%
Stearns	25	68.0%	64.0%	27	77.8%	70.4%	20	50.0%	60.0%
Steele	10	70.0%	90.0%	7	71.4%	28.6%	2	50.0%	100.0%
Stevens	0		0.0%	2	50.0%	50.0%	0		0.0%
Swift	1	0.0%		2	50.0%	0.0%	2	50.0%	100.0%
Todd	4	100.0%	100.0%	3	100.0%	66.7%	4	25.0%	50.0%
Traverse	1	100.0%	100.0%	1	100.0%	100.0%	3	100.0%	100.0%
Wabasha	7	71.4%	85.7%	1	0.0%		1	100.0%	100.0%
Wadena	4	50.0%	50.0%	5	100.0%	60.0%	4	50.0%	50.0%
Waseca	10	80.0%	80.0%	7	71.4%	71.4%	5	100.0%	80.0%
Washington	23	82.6%	65.2%	23	82.6%	65.2%	12	75.0%	75.0%
Watsonwan	0		0.0%	0		0.0%	2	100.0%	50.0%
Wilkin	1	100.0%	100.0%	5	40.0%	80.0%	5	80.0%	60.0%
Winona	4	50.0%	50.0%	5	60.0%	40.0%	5	100.0%	80.0%
Wright	10	50.0%	80.0%	9	77.8%	77.8%	14	92.9%	92.9%
Yellow Medicine	0		0.0%	0		0.0%	0		0.0%

Fifth and Twelfth Month Status of Monthly DWP Case Cohorts - July, August, and September 2006

County	July 2006 DWP Eligible			August 2006 DWP Eligible			September 2006 DWP Eligible		
	Total Cases in Cohort	Percent Off MFIP Cash in 5th Month	Percent Off MFIP Cash in 12th Month	Total Cases in Cohort	Percent Off MFIP Cash in 5th Month	Percent Off MFIP Cash in 12th Month	Total Cases in Cohort	Percent Off MFIP Cash in 5th Month	Percent Off MFIP Cash in 12th Month
State	1163	64.1%	67.8%	1148	65.1%	66.2%	1062	59.1%	65.3%
Aitkin	3	100.0%	33.3%	5	0.0%	40.0%	6	50.0%	83.3%
Anoka	83	69.9%	69.9%	91	80.2%	74.7%	65	63.1%	64.6%
Becker	6	66.7%	83.3%	4	50.0%	50.0%	7	85.7%	71.4%
Beltrami	19	57.9%	42.1%	16	56.3%	50.0%	23	56.5%	52.2%
Benton	8	75.0%	75.0%	8	75.0%	50.0%	4	75.0%	75.0%
Big Stone	0			0			0		
Blue Earth	8	100.0%	87.5%	17	64.7%	58.8%	15	53.3%	46.7%
Brown	4	25.0%	25.0%	5	60.0%	40.0%	1	100.0%	100.0%
Carlton	6	50.0%	66.7%	4	100.0%	75.0%	6	33.3%	50.0%
Carver	7	85.7%	85.7%	10	90.0%	70.0%	9	66.7%	88.9%
Cass	7	42.9%	71.4%	7	100.0%	85.7%	8	87.5%	87.5%
Chippewa	3	66.7%	66.7%	6	100.0%	100.0%	2	100.0%	100.0%
Chisago	8	87.5%	62.5%	15	66.7%	73.3%	6	50.0%	83.3%
Clay	10	50.0%	70.0%	11	72.7%	90.9%	16	37.5%	81.3%
Clearwater	1	100.0%	100.0%	1	100.0%	100.0%	1	100.0%	0.0%
Cook	0			2	100.0%	50.0%	0		
Cottonwood	2	100.0%	100.0%	2	0.0%	50.0%	1	100.0%	0.0%
Crow Wing	12	83.3%	75.0%	17	52.9%	47.1%	21	76.2%	66.7%
Dakota	71	77.5%	74.6%	74	82.4%	77.0%	74	70.3%	74.3%
Dodge	4	50.0%	75.0%	10	90.0%	100.0%	0		
Douglas	5	80.0%	100.0%	7	85.7%	85.7%	5	100.0%	60.0%
Faribault	5	100.0%	100.0%	2	100.0%	50.0%	4	75.0%	100.0%
Fillmore	3	33.3%	33.3%	7	57.1%	71.4%	3	66.7%	66.7%
Freeborn	10	80.0%	80.0%	3	66.7%	66.7%	6	33.3%	66.7%
Goodhue	6	66.7%	66.7%	6	83.3%	100.0%	5	100.0%	80.0%
Grant	2	100.0%	100.0%	1	0.0%	0.0%	0		
Hennepin	276	55.1%	58.3%	278	54.3%	57.6%	278	51.4%	52.5%
Houston	6	66.7%	66.7%	8	25.0%	62.5%	8	50.0%	62.5%
Hubbard	2	100.0%	100.0%	6	83.3%	100.0%	3	66.7%	100.0%
Isanti	4	25.0%	75.0%	13	53.8%	46.2%	6	66.7%	83.3%
Itasca	9	77.8%	55.6%	9	55.6%	66.7%	10	50.0%	50.0%
Jackson	1	100.0%	100.0%	5	80.0%	60.0%	2	50.0%	50.0%
Kanabec	6	66.7%	100.0%	4	75.0%	50.0%	5	80.0%	80.0%
Kandiyohi	18	83.3%	72.2%	7	71.4%	85.7%	13	53.8%	69.2%
Kittson	0			0			0		
Koochiching	5	60.0%	100.0%	1	0.0%	100.0%	5	20.0%	40.0%
Lac qui Parle	2	100.0%	100.0%	2	100.0%	100.0%	0		
Lake	2	100.0%	100.0%	4	75.0%	100.0%	0		
Lake of the Woods	0			2	0.0%	50.0%	0		
LeSueur	5	80.0%	80.0%	5	60.0%	80.0%	6	66.7%	66.7%
Lincoln	0			1	100.0%	100.0%	2	100.0%	100.0%
Lyon	3	33.3%	33.3%	5	80.0%	40.0%	6	33.3%	83.3%
Mcleod	5	80.0%	60.0%	8	100.0%	87.5%	8	87.5%	100.0%
Mahnomen	2	0.0%	100.0%	4	100.0%	100.0%	6	66.7%	100.0%
Marshall	0			3	100.0%	100.0%	3	66.7%	100.0%
Martin	8	75.0%	62.5%	6	83.3%	83.3%	6	100.0%	66.7%
Meeker	1	100.0%	100.0%	5	80.0%	100.0%	4	75.0%	100.0%

Fifth and Twelfth Month Status of Monthly DWP Case Cohorts - July, August, and September 2006

County	July 2006 DWP Eligible			August 2006 DWP Eligible			September 2006 DWP Eligible		
	Total Cases in Cohort	Percent Off MFIP Cash in 5th Month	Percent Off MFIP Cash in 12th Month	Total Cases in Cohort	Percent Off MFIP Cash in 5th Month	Percent Off MFIP Cash in 12th Month	Total Cases in Cohort	Percent Off MFIP Cash in 5th Month	Percent Off MFIP Cash in 12th Month
Mille Lacs	2	100.0%	100.0%	6	83.3%	66.7%	2	50.0%	0.0%
Morrison	6	66.7%	66.7%	4	50.0%	75.0%	5	40.0%	80.0%
Mower	17	58.8%	58.8%	13	46.2%	61.5%	7	57.1%	71.4%
Murray	0			0			0		
Nicollet	6	50.0%	33.3%	10	30.0%	50.0%	7	71.4%	71.4%
Nobles	3	100.0%	100.0%	4	25.0%	50.0%	7	42.9%	57.1%
Norman	8	62.5%	87.5%	2	50.0%	50.0%	2	100.0%	100.0%
Olmsted	38	68.4%	81.6%	21	66.7%	71.4%	28	71.4%	89.3%
Otter Tail	16	62.5%	62.5%	8	75.0%	75.0%	6	66.7%	66.7%
Pennington	2	100.0%	100.0%	2	50.0%	100.0%	1	0.0%	100.0%
Pine	4	100.0%	75.0%	8	75.0%	87.5%	6	50.0%	66.7%
Pipestone	2	100.0%	100.0%	2	100.0%	100.0%	2	100.0%	0.0%
Polk	18	72.2%	83.3%	11	90.9%	72.7%	13	92.3%	76.9%
Pope	2	50.0%	100.0%	2	100.0%	50.0%	1	0.0%	100.0%
Ramsey	165	55.2%	63.0%	138	55.1%	54.3%	111	45.0%	58.6%
Red Lake	1	0.0%	100.0%	2	0.0%	50.0%	0		
Redwood	3	33.3%	66.7%	4	75.0%	50.0%	1	0.0%	0.0%
Renville	11	45.5%	72.7%	5	80.0%	80.0%	3	66.7%	100.0%
Rice	14	35.7%	50.0%	16	68.8%	75.0%	12	66.7%	66.7%
Rock	4	100.0%	75.0%	4	75.0%	100.0%	1	0.0%	100.0%
Roseau	0			0			3	66.7%	100.0%
St. Louis	51	66.7%	78.4%	40	57.5%	75.0%	46	47.8%	63.0%
Scott	9	55.6%	44.4%	17	64.7%	70.6%	17	76.5%	82.4%
Sherburne	11	72.7%	90.9%	7	100.0%	71.4%	15	60.0%	86.7%
Sibley	3	100.0%	100.0%	5	100.0%	80.0%	1	100.0%	100.0%
Stearns	25	68.0%	52.0%	33	54.5%	60.6%	28	60.7%	67.9%
Steele	7	100.0%	100.0%	8	87.5%	62.5%	8	37.5%	62.5%
Stevens	1	100.0%	100.0%	1	100.0%	100.0%	1	100.0%	0.0%
Swift	2	0.0%	50.0%	1	0.0%	100.0%	0		
Todd	5	80.0%	100.0%	9	66.7%	44.4%	3	66.7%	66.7%
Traverse	2	50.0%	100.0%	1	100.0%	100.0%	1	0.0%	100.0%
Wabasha	3	66.7%	100.0%	3	100.0%	100.0%	2	0.0%	50.0%
Wadena	7	71.4%	85.7%	5	60.0%	80.0%	6	50.0%	83.3%
Waseca	12	83.3%	83.3%	5	60.0%	80.0%	5	100.0%	100.0%
Washington	22	68.2%	63.6%	21	81.0%	76.2%	26	88.5%	69.2%
Watsonwan	2	100.0%	50.0%	2	100.0%	50.0%	1	100.0%	100.0%
Wilkin	6	66.7%	66.7%	0			4	50.0%	75.0%
Winona	5	80.0%	80.0%	3	66.7%	66.7%	5	80.0%	60.0%
Wright	20	60.0%	70.0%	15	73.3%	80.0%	15	80.0%	80.0%
Yellow Medicine	0			3	100.0%	100.0%	1	100.0%	100.0%

Fifth and Twelfth Month Status of Monthly DWP Case Cohorts - October, November, and December 2006

County	October 2006 DWP Eligible			November 2006 DWP Eligible			December 2006 DWP Eligible		
	Total Cases in Cohort	Percent Off MFIP Cash in 5th Month	Percent Off MFIP Cash in 12th Month	Total Cases in Cohort	Percent Off MFIP Cash in 5th Month	Percent Off MFIP Cash in 12th Month	Total Cases in Cohort	Percent Off MFIP Cash in 5th Month	Percent Off MFIP Cash in 12th Month
State	1080	59.4%	64.1%	895	61.0%	69.1%	909	61.2%	65.5%
Aitkin	2	0.0%	0.0%	2	0.0%	50.0%	3	33.3%	100.0%
Anoka	79	72.2%	79.7%	73	74.0%	80.8%	60	65.0%	75.0%
Becker	6	66.7%	50.0%	10	70.0%	70.0%	6	83.3%	83.3%
Beltrami	19	63.2%	57.9%	16	68.8%	56.3%	14	57.1%	78.6%
Benton	8	75.0%	87.5%	5	60.0%	80.0%	4	50.0%	50.0%
Big Stone	2	100.0%	50.0%	0			1	100.0%	100.0%
Blue Earth	12	66.7%	50.0%	10	70.0%	70.0%	10	60.0%	80.0%
Brown	4	75.0%	100.0%	4	75.0%	75.0%	6	83.3%	66.7%
Carlton	6	66.7%	66.7%	4	50.0%	75.0%	1	100.0%	100.0%
Carver	5	60.0%	40.0%	6	50.0%	66.7%	7	57.1%	85.7%
Cass	13	23.1%	76.9%	13	46.2%	46.2%	6	33.3%	100.0%
Chippewa	1	0.0%	100.0%	0			2	100.0%	100.0%
Chisago	14	64.3%	85.7%	6	50.0%	83.3%	14	35.7%	42.9%
Clay	13	46.2%	61.5%	11	45.5%	90.9%	9	33.3%	66.7%
Clearwater	4	100.0%	100.0%	4	25.0%	75.0%	6	66.7%	83.3%
Cook	0			1	100.0%	100.0%	1	100.0%	100.0%
Cottonwood	3	66.7%	66.7%	1	0.0%	100.0%	4	75.0%	25.0%
Crow Wing	13	69.2%	69.2%	15	86.7%	73.3%	13	84.6%	69.2%
Dakota	75	74.7%	68.0%	49	77.6%	71.4%	45	88.9%	77.8%
Dodge	5	100.0%	80.0%	4	50.0%	75.0%	1	100.0%	100.0%
Douglas	5	100.0%	60.0%	1	0.0%	100.0%	5	60.0%	60.0%
Faribault	2	50.0%	100.0%	2	100.0%	100.0%	1	100.0%	100.0%
Fillmore	3	100.0%	66.7%	5	40.0%	80.0%	3	66.7%	100.0%
Freeborn	3	66.7%	100.0%	5	60.0%	40.0%	5	60.0%	40.0%
Goodhue	4	100.0%	100.0%	5	80.0%	60.0%	7	71.4%	85.7%
Grant	1	100.0%	100.0%	1	0.0%	100.0%	0		
Hennepin	256	48.4%	51.2%	206	47.6%	55.3%	221	48.9%	53.4%
Houston	4	75.0%	75.0%	5	100.0%	100.0%	6	33.3%	50.0%
Hubbard	5	60.0%	60.0%	4	100.0%	100.0%	2	100.0%	50.0%
Isanti	12	66.7%	91.7%	6	33.3%	66.7%	8	87.5%	50.0%
Itasca	9	66.7%	88.9%	9	44.4%	77.8%	9	55.6%	44.4%
Jackson	3	66.7%	66.7%	1	100.0%	100.0%	3	100.0%	100.0%
Kanabec	3	66.7%	100.0%	6	83.3%	66.7%	5	60.0%	60.0%
Kandiyohi	9	66.7%	77.8%	5	40.0%	40.0%	12	66.7%	66.7%
Kittson	1	0.0%	0.0%	1	100.0%	100.0%	1	100.0%	100.0%
Koochiching	1	100.0%	100.0%	4	50.0%	25.0%	3	33.3%	66.7%
Lac qui Parle	0			0			4	75.0%	75.0%
Lake	2	100.0%	100.0%	0			1	0.0%	100.0%
Lake of the Woods	1	100.0%	100.0%	0			1	100.0%	0.0%
LeSueur	3	100.0%	66.7%	3	66.7%	66.7%	5	80.0%	80.0%
Lincoln	0			0			0		
Lyon	6	100.0%	66.7%	7	85.7%	85.7%	7	71.4%	71.4%
Mcleod	3	66.7%	100.0%	8	75.0%	62.5%	5	80.0%	100.0%
Mahnomen	1	100.0%	100.0%	0			3	33.3%	66.7%
Marshall	5	80.0%	80.0%	1	0.0%	100.0%	3	100.0%	100.0%
Martin	5	60.0%	80.0%	5	80.0%	60.0%	5	100.0%	80.0%
Meeker	3	100.0%	100.0%	6	66.7%	66.7%	4	100.0%	75.0%



Fifth and Twelfth Month Status of Monthly DWP Case Cohorts - October, November, and December 2006

County	October 2006 DWP Eligible			November 2006 DWP Eligible			December 2006 DWP Eligible		
	Total Cases in Cohort	Percent Off MFIP Cash in 5th Month	Percent Off MFIP Cash in 12th Month	Total Cases in Cohort	Percent Off MFIP Cash in 5th Month	Percent Off MFIP Cash in 12th Month	Total Cases in Cohort	Percent Off MFIP Cash in 5th Month	Percent Off MFIP Cash in 12th Month
Mille Lacs	5	60.0%	60.0%	5	20.0%	40.0%	6	66.7%	83.3%
Morrison	3	66.7%	66.7%	3	66.7%	100.0%	6	66.7%	66.7%
Mower	9	66.7%	66.7%	6	100.0%	100.0%	10	80.0%	70.0%
Murray	2	100.0%	100.0%	0			0		
Nicollet	9	77.8%	66.7%	6	50.0%	50.0%	10	70.0%	60.0%
Nobles	8	75.0%	62.5%	5	40.0%	60.0%	8	50.0%	62.5%
Norman	1	0.0%	100.0%	1	0.0%	0.0%	3	66.7%	66.7%
Olmsted	27	70.4%	70.4%	28	67.9%	64.3%	25	56.0%	64.0%
Otter Tail	9	77.8%	88.9%	8	75.0%	100.0%	9	88.9%	55.6%
Pennington	2	0.0%	100.0%	4	75.0%	75.0%	2	100.0%	100.0%
Pine	5	0.0%	20.0%	7	71.4%	85.7%	7	71.4%	57.1%
Pipestone	1	100.0%	100.0%	1	0.0%	100.0%	1	0.0%	100.0%
Polk	9	88.9%	100.0%	6	83.3%	100.0%	6	100.0%	100.0%
Pope	3	66.7%	66.7%	0			1	100.0%	100.0%
Ramsey	164	40.2%	49.4%	117	43.6%	59.0%	112	51.8%	60.7%
Red Lake	1	0.0%	100.0%	4	75.0%	100.0%	1	100.0%	100.0%
Redwood	4	100.0%	100.0%	3	33.3%	66.7%	5	100.0%	100.0%
Renville	4	75.0%	75.0%	2	100.0%	50.0%	1	100.0%	0.0%
Rice	13	61.5%	69.2%	14	78.6%	100.0%	13	46.2%	61.5%
Rock	0			2	100.0%	100.0%	2	0.0%	0.0%
Roseau	3	33.3%	66.7%	1	0.0%	100.0%	1	100.0%	100.0%
St. Louis	40	55.0%	57.5%	30	60.0%	76.7%	35	60.0%	62.9%
Scott	8	87.5%	100.0%	8	50.0%	100.0%	10	100.0%	90.0%
Sherburne	2	50.0%	50.0%	10	90.0%	90.0%	14	78.6%	78.6%
Sibley	2	50.0%	100.0%	4	100.0%	100.0%	1	100.0%	100.0%
Stearns	25	60.0%	76.0%	23	65.2%	65.2%	24	62.5%	62.5%
Steele	14	57.1%	50.0%	7	85.7%	85.7%	4	50.0%	75.0%
Stevens	0			0			0		
Swift	3	100.0%	100.0%	0			0		
Todd	4	75.0%	100.0%	5	100.0%	80.0%	1	0.0%	100.0%
Traverse	1	100.0%	100.0%	0			2	100.0%	100.0%
Wabasha	3	33.3%	66.7%	5	100.0%	100.0%	3	33.3%	66.7%
Wadena	5	80.0%	80.0%	4	75.0%	75.0%	9	55.6%	66.7%
Waseca	4	25.0%	75.0%	7	85.7%	100.0%	4	50.0%	75.0%
Washington	24	75.0%	66.7%	17	100.0%	88.2%	9	77.8%	77.8%
Watsonwan	4	75.0%	75.0%	2	100.0%	50.0%	4	50.0%	75.0%
Wilkin	0			0			2	50.0%	50.0%
Winona	4	75.0%	75.0%	3	33.3%	100.0%	6	50.0%	66.7%
Wright	21	81.0%	76.2%	17	76.5%	82.4%	9	77.8%	77.8%
Yellow Medicine	0			0			1	100.0%	100.0%

Fifth and Twelfth Month Status of Monthly DWP Case Cohorts - January, February, March 2007

County	January 2007 DWP Eligible			February 2007 DWP Eligible			March 2007 DWP Eligible		
	Total Cases in Cohort	Percent Off MFIP Cash in 5th Month	Percent Off MFIP Cash in 12th Month	Total Cases in Cohort	Percent Off MFIP Cash in 5th Month	Percent Off MFIP Cash in 12th Month	Total Cases in Cohort	Percent Off MFIP Cash in 5th Month	Percent Off MFIP Cash in 12th Month
State	978	62.8%	69.6%	815	62.7%	66.9%	918	58.8%	62.5%
Aitkin	4	25.0%	75.0%	6	100.0%	66.7%	2	50.0%	50.0%
Anoka	65	69.2%	72.3%	63	65.1%	76.2%	66	57.6%	66.7%
Becker	10	90.0%	100.0%	4	75.0%	75.0%	8	100.0%	87.5%
Beltrami	20	65.0%	65.0%	9	77.8%	88.9%	18	55.6%	61.1%
Benton	5	100.0%	100.0%	6	100.0%	83.3%	10	80.0%	80.0%
Big Stone	0			0			0		
Blue Earth	14	85.7%	71.4%	13	46.2%	53.8%	9	66.7%	55.6%
Brown	3	100.0%	100.0%	4	75.0%	75.0%	4	75.0%	75.0%
Carlton	5	60.0%	40.0%	2	50.0%	100.0%	4	75.0%	100.0%
Carver	5	100.0%	100.0%	5	60.0%	40.0%	3	66.7%	33.3%
Cass	11	72.7%	81.8%	13	69.2%	69.2%	9	77.8%	33.3%
Chippewa	1	0.0%	0.0%	0			1	100.0%	100.0%
Chisago	7	85.7%	100.0%	7	85.7%	42.9%	10	30.0%	50.0%
Clay	12	100.0%	100.0%	10	90.0%	80.0%	10	80.0%	50.0%
Clearwater	2	100.0%	100.0%	5	20.0%	60.0%	6	66.7%	66.7%
Cook	0			1	0.0%	100.0%	1	100.0%	0.0%
Cottonwood	1	100.0%	100.0%	0			2	50.0%	100.0%
Crow Wing	18	88.9%	88.9%	12	66.7%	75.0%	11	90.9%	81.8%
Dakota	63	74.6%	71.4%	42	71.4%	69.0%	46	76.1%	69.6%
Dodge	2	0.0%	0.0%	4	50.0%	75.0%	2	100.0%	50.0%
Douglas	4	50.0%	75.0%	6	83.3%	100.0%	5	80.0%	100.0%
Faribault	2	50.0%	100.0%	2	100.0%	100.0%	7	85.7%	85.7%
Fillmore	8	62.5%	75.0%	3	66.7%	66.7%	3	66.7%	66.7%
Freeborn	11	72.7%	100.0%	5	40.0%	100.0%	6	16.7%	83.3%
Goodhue	13	53.8%	76.9%	8	62.5%	87.5%	15	53.3%	80.0%
Grant	1	0.0%	100.0%	0			1	100.0%	100.0%
Hennepin	220	52.7%	60.0%	170	49.4%	53.5%	231	51.9%	55.8%
Houston	3	66.7%	100.0%	7	100.0%	100.0%	0		
Hubbard	3	100.0%	66.7%	4	50.0%	75.0%	1	0.0%	100.0%
Isanti	15	60.0%	80.0%	7	71.4%	71.4%	12	50.0%	41.7%
Itasca	6	83.3%	100.0%	9	66.7%	66.7%	13	69.2%	69.2%
Jackson	2	100.0%	100.0%	4	50.0%	50.0%	1	100.0%	100.0%
Kanabec	10	100.0%	70.0%	3	66.7%	66.7%	2	0.0%	100.0%
Kandiyohi	6	50.0%	66.7%	9	66.7%	88.9%	11	54.5%	63.6%
Kittson	0			0			0		
Koochiching	5	80.0%	80.0%	2	100.0%	100.0%	4	75.0%	75.0%
Lac qui Parle	1	100.0%	100.0%	0			2	0.0%	50.0%
Lake	1	0.0%	100.0%	1	100.0%	100.0%	0		
Lake of the Woods	1	100.0%	100.0%	1	100.0%	0.0%	1	100.0%	100.0%
LeSueur	6	66.7%	83.3%	7	71.4%	71.4%	2	50.0%	100.0%
Lincoln	0			0			1	0.0%	0.0%
Lyon	3	66.7%	100.0%	1	100.0%	100.0%	2	50.0%	50.0%
Mcleod	6	66.7%	66.7%	5	60.0%	100.0%	6	100.0%	66.7%
Mahnomen	3	100.0%	33.3%	2	100.0%	50.0%	2	100.0%	50.0%
Marshall	2	100.0%	100.0%	1	100.0%	100.0%	0		
Martin	1	100.0%	100.0%	2	100.0%	50.0%	2	100.0%	100.0%
Meeker	5	100.0%	80.0%	1	100.0%	100.0%	5	100.0%	60.0%

Fifth and Twelfth Month Status of Monthly DWP Case Cohorts - January, February, March 2007

County	January 2007 DWP Eligible			February 2007 DWP Eligible			March 2007 DWP Eligible		
	Total Cases in Cohort	Percent Off MFIP Cash in 5th Month	Percent Off MFIP Cash in 12th Month	Total Cases in Cohort	Percent Off MFIP Cash in 5th Month	Percent Off MFIP Cash in 12th Month	Total Cases in Cohort	Percent Off MFIP Cash in 5th Month	Percent Off MFIP Cash in 12th Month
Mille Lacs	5	20.0%	100.0%	4	50.0%	50.0%	6	50.0%	83.3%
Morrison	7	85.7%	71.4%	6	66.7%	33.3%	3	66.7%	33.3%
Mower	11	63.6%	90.9%	6	50.0%	66.7%	3	66.7%	66.7%
Murray	0			1	100.0%	100.0%	0		
Nicollet	6	33.3%	66.7%	7	42.9%	71.4%	2	0.0%	50.0%
Nobles	4	50.0%	75.0%	3	66.7%	100.0%	1	0.0%	0.0%
Norman	4	75.0%	100.0%	1	100.0%	100.0%	1	0.0%	0.0%
Olmsted	21	38.1%	47.6%	28	78.6%	85.7%	27	48.1%	63.0%
Otter Tail	8	50.0%	75.0%	7	71.4%	28.6%	10	80.0%	70.0%
Pennington	2	50.0%	100.0%	4	50.0%	75.0%	0		
Pine	14	71.4%	71.4%	7	71.4%	57.1%	9	44.4%	66.7%
Pipestone	2	100.0%	100.0%	0			2	50.0%	100.0%
Polk	5	100.0%	80.0%	0			4	100.0%	100.0%
Pope	1	100.0%	0.0%	0			2	50.0%	50.0%
Ramsey	141	44.7%	58.2%	119	49.6%	53.8%	123	39.8%	48.0%
Red Lake	1	0.0%	0.0%	0			3	66.7%	100.0%
Redwood	2	100.0%	50.0%	2	0.0%	50.0%	1	100.0%	0.0%
Renville	3	66.7%	66.7%	5	100.0%	80.0%	4	75.0%	100.0%
Rice	11	72.7%	81.8%	12	66.7%	66.7%	11	63.6%	54.5%
Rock	0			0			0		
Roseau	0			0			1	0.0%	100.0%
St. Louis	39	59.0%	56.4%	34	76.5%	64.7%	38	65.8%	60.5%
Scott	6	66.7%	66.7%	8	87.5%	62.5%	14	71.4%	57.1%
Sherburne	9	88.9%	88.9%	12	83.3%	66.7%	10	80.0%	80.0%
Sibley	3	100.0%	100.0%	5	80.0%	80.0%	1	100.0%	100.0%
Stearns	24	75.0%	70.8%	23	65.2%	91.3%	23	78.3%	78.3%
Steele	4	50.0%	50.0%	8	75.0%	87.5%	8	62.5%	62.5%
Stevens	0			0			1	100.0%	100.0%
Swift	2	100.0%	100.0%	0			1	100.0%	0.0%
Todd	4	75.0%	75.0%	5	60.0%	80.0%	8	75.0%	87.5%
Traverse	0			0			0		
Wabasha	4	75.0%	100.0%	2	50.0%	100.0%	2	100.0%	100.0%
Wadena	3	100.0%	100.0%	1	0.0%	0.0%	6	66.7%	83.3%
Waseca	7	71.4%	85.7%	4	100.0%	100.0%	1	100.0%	100.0%
Washington	14	64.3%	71.4%	13	69.2%	76.9%	11	72.7%	100.0%
Watsonwan	4	50.0%	100.0%	5	80.0%	100.0%	0		
Wilkin	0			0			1	0.0%	0.0%
Winona	7	71.4%	71.4%	4	50.0%	100.0%	6	66.7%	83.3%
Wright	14	64.3%	78.6%	13	61.5%	76.9%	16	62.5%	68.8%
Yellow Medicine	0			0			1	0.0%	0.0%

Fifth and Twelfth Month Status of Monthly DWP Case Cohorts - April, May, June 2007

County	April 2007 DWP Eligible			May 2007 DWP Eligible			June 2007 DWP Eligible		
	Total Cases in Cohort	Percent Off MFIP Cash in 5th Month	Percent Off MFIP Cash in 12th Month	Total Cases in Cohort	Percent Off MFIP Cash in 5th Month	Percent Off MFIP Cash in 12th Month	Total Cases in Cohort	Percent Off MFIP Cash in 5th Month	Percent Off MFIP Cash in 12th Month
State	963	62.7%	66.0%	958	63.9%	65.0%	952	62.0%	65.8%
Aitkin	2	100.0%	0.0%	5	40.0%	60.0%	1	100.0%	100.0%
Anoka	55	69.1%	74.5%	50	64.0%	74.0%	63	68.3%	76.2%
Becker	7	71.4%	71.4%	2	50.0%	50.0%	8	62.5%	37.5%
Beltrami	15	53.3%	53.3%	19	68.4%	84.2%	25	60.0%	72.0%
Benton	10	60.0%	90.0%	14	71.4%	78.6%	9	100.0%	77.8%
Big Stone	1	100.0%	100.0%	0			2	100.0%	100.0%
Blue Earth	13	61.5%	76.9%	9	44.4%	66.7%	9	77.8%	66.7%
Brown	2	50.0%	50.0%	4	75.0%	75.0%	5	60.0%	100.0%
Carlton	5	100.0%	80.0%	4	25.0%	50.0%	5	80.0%	40.0%
Carver	5	100.0%	80.0%	13	61.5%	92.3%	7	85.7%	100.0%
Cass	12	58.3%	58.3%	12	58.3%	66.7%	4	50.0%	50.0%
Chippewa	1	0.0%	0.0%	2	100.0%	50.0%	3	100.0%	100.0%
Chisago	9	77.8%	55.6%	8	75.0%	75.0%	9	66.7%	66.7%
Clay	19	84.2%	84.2%	14	85.7%	71.4%	18	66.7%	72.2%
Clearwater	4	100.0%	75.0%	4	75.0%	100.0%	1	100.0%	100.0%
Cook	1	0.0%	100.0%	0			0		
Cottonwood	3	66.7%	100.0%	4	75.0%	100.0%	3	33.3%	33.3%
Crow Wing	17	82.4%	64.7%	12	83.3%	75.0%	10	70.0%	80.0%
Dakota	47	70.2%	72.3%	56	83.9%	75.0%	49	75.5%	81.6%
Dodge	5	40.0%	40.0%	2	100.0%	100.0%	3	100.0%	100.0%
Douglas	6	83.3%	83.3%	7	71.4%	71.4%	7	57.1%	100.0%
Faribault	2	50.0%	100.0%	3	66.7%	100.0%	1	100.0%	0.0%
Fillmore	2	50.0%	100.0%	4	75.0%	100.0%	1	0.0%	0.0%
Freeborn	8	62.5%	62.5%	8	87.5%	62.5%	10	80.0%	70.0%
Goodhue	11	72.7%	81.8%	9	66.7%	100.0%	12	41.7%	33.3%
Grant	0			0			1	100.0%	100.0%
Hennepin	227	55.5%	55.9%	239	56.9%	49.8%	224	52.7%	56.7%
Houston	3	33.3%	100.0%	4	50.0%	75.0%	5	40.0%	60.0%
Hubbard	1	0.0%	0.0%	2	100.0%	100.0%	2	100.0%	100.0%
Isanti	8	62.5%	62.5%	7	57.1%	71.4%	5	60.0%	100.0%
Itasca	11	63.6%	63.6%	5	100.0%	100.0%	8	50.0%	62.5%
Jackson	2	100.0%	100.0%	2	50.0%	100.0%	2	100.0%	100.0%
Kanabec	2	50.0%	100.0%	5	60.0%	100.0%	4	50.0%	50.0%
Kandiyohi	12	91.7%	75.0%	16	81.3%	75.0%	17	82.4%	82.4%
Kittson	2	100.0%	100.0%	0			1	0.0%	100.0%
Koochiching	2	100.0%	50.0%	2	50.0%	50.0%	3	66.7%	100.0%
Lac qui Parle	0			0			0		
Lake	2	100.0%	50.0%	2	100.0%	50.0%	0		
Lake of the Woods	1	100.0%	100.0%	0			0		
LeSueur	7	85.7%	85.7%	4	100.0%	100.0%	5	80.0%	40.0%
Lincoln	0			0			0		
Lyon	3	66.7%	33.3%	5	80.0%	60.0%	4	100.0%	100.0%
Mcleod	8	75.0%	75.0%	2	100.0%	0.0%	6	66.7%	83.3%
Mahnomen	3	66.7%	100.0%	5	80.0%	40.0%	7	42.9%	28.6%
Marshall	2	50.0%	50.0%	0			0		
Martin	3	66.7%	100.0%	2	50.0%	50.0%	2	100.0%	100.0%
Meeker	6	83.3%	83.3%	7	42.9%	85.7%	1	100.0%	0.0%

Fifth and Twelfth Month Status of Monthly DWP Case Cohorts - April, May, June 2007

County	April 2007 DWP Eligible			May 2007 DWP Eligible			June 2007 DWP Eligible		
	Total Cases in Cohort	Percent Off MFIP Cash in 5th Month	Percent Off MFIP Cash in 12th Month	Total Cases in Cohort	Percent Off MFIP Cash in 5th Month	Percent Off MFIP Cash in 12th Month	Total Cases in Cohort	Percent Off MFIP Cash in 5th Month	Percent Off MFIP Cash in 12th Month
Mille Lacs	4	75.0%	75.0%	3	100.0%	66.7%	4	100.0%	75.0%
Morrison	2	100.0%	100.0%	4	75.0%	75.0%	7	71.4%	71.4%
Mower	4	75.0%	100.0%	10	60.0%	60.0%	12	66.7%	83.3%
Murray	2	50.0%	100.0%	0			0		
Nicollet	5	100.0%	100.0%	3	100.0%	100.0%	5	60.0%	80.0%
Nobles	5	60.0%	100.0%	7	57.1%	57.1%	6	33.3%	83.3%
Norman	0			1	100.0%	100.0%	1	100.0%	100.0%
Olmsted	30	80.0%	80.0%	28	53.6%	67.9%	36	75.0%	75.0%
Otter Tail	13	61.5%	69.2%	11	54.5%	63.6%	7	71.4%	85.7%
Pennington	2	50.0%	100.0%	6	50.0%	83.3%	4	50.0%	50.0%
Pine	9	55.6%	66.7%	7	57.1%	71.4%	11	63.6%	54.5%
Pipestone	4	100.0%	25.0%	4	75.0%	75.0%	1	100.0%	100.0%
Polk	4	75.0%	100.0%	10	80.0%	60.0%	10	60.0%	80.0%
Pope	1	100.0%	0.0%	1	0.0%	0.0%	1	100.0%	100.0%
Ramsey	149	42.3%	53.7%	124	45.2%	48.4%	124	44.4%	48.4%
Red Lake	2	100.0%	100.0%	1	100.0%	100.0%	1	100.0%	100.0%
Redwood	4	100.0%	100.0%	2	50.0%	50.0%	5	60.0%	60.0%
Renville	1	100.0%	100.0%	8	87.5%	100.0%	10	80.0%	90.0%
Rice	13	76.9%	61.5%	4	75.0%	50.0%	7	71.4%	71.4%
Rock	3	33.3%	33.3%	1	0.0%	100.0%	1	0.0%	100.0%
Roseau	2	50.0%	100.0%	0			0		
St. Louis	36	52.8%	55.6%	33	69.7%	78.8%	35	65.7%	62.9%
Scott	11	72.7%	72.7%	9	77.8%	77.8%	8	37.5%	62.5%
Sherburne	7	57.1%	57.1%	9	66.7%	66.7%	11	63.6%	54.5%
Sibley	3	100.0%	100.0%	1	0.0%	100.0%	1	100.0%	100.0%
Stearns	19	63.2%	68.4%	28	60.7%	67.9%	26	73.1%	73.1%
Steele	5	80.0%	100.0%	8	75.0%	50.0%	4	50.0%	50.0%
Stevens	0			0			0		
Swift	0			2	100.0%	100.0%	2	100.0%	100.0%
Todd	3	100.0%	100.0%	4	50.0%	25.0%	1	0.0%	100.0%
Traverse	0			1	100.0%	100.0%	0		
Wabasha	3	100.0%	100.0%	4	50.0%	100.0%	1	100.0%	100.0%
Wadena	1	100.0%	100.0%	2	50.0%	0.0%	3	100.0%	66.7%
Waseca	9	55.6%	66.7%	5	100.0%	100.0%	5	100.0%	100.0%
Washington	20	70.0%	75.0%	26	84.6%	80.8%	18	66.7%	72.2%
Watonwan	0			3	100.0%	100.0%	2	50.0%	50.0%
Wilkin	1	100.0%	100.0%	0			2	100.0%	100.0%
Winona	5	60.0%	100.0%	4	50.0%	50.0%	8	62.5%	62.5%
Wright	13	76.9%	76.9%	10	100.0%	100.0%	9	66.7%	66.7%
Yellow Medicine	1	100.0%	100.0%	0			1	100.0%	100.0%

Fifth and Twelfth Month Status of Monthly DWP Case Cohorts - July, August, September 2007

County	July 2007 DWP Eligible			August 2007 DWP Eligible			September 2007 DWP Eligible		
	Total Cases in Cohort	Percent Off MFIP Cash in 5th Month	Percent Off MFIP Cash in 12th Month	Total Cases in Cohort	Percent Off MFIP Cash in 5th Month	Percent Off MFIP Cash in 12th Month	Total Cases in Cohort	Percent Off MFIP Cash in 5th Month	Percent Off MFIP Cash in 12th Month
State	1110	63.4%	66.5%	1077	61.4%	65.0%	991	59.5%	65.4%
Aitkin	3	66.7%	66.7%	7	85.7%	85.7%	8	37.5%	37.5%
Anoka	81	64.2%	67.9%	91	64.8%	67.0%	74	68.9%	66.2%
Becker	10	70.0%	70.0%	5	100.0%	40.0%	11	54.5%	63.6%
Beltrami	23	65.2%	47.8%	25	48.0%	52.0%	14	50.0%	42.9%
Benton	5	40.0%	60.0%	5	80.0%	80.0%	2	100.0%	100.0%
Big Stone	0			2	100.0%	50.0%	0		
Blue Earth	12	58.3%	50.0%	10	80.0%	70.0%	9	66.7%	66.7%
Brown	6	66.7%	83.3%	5	20.0%	80.0%	1	100.0%	100.0%
Carlton	6	83.3%	100.0%	11	81.8%	54.5%	5	60.0%	100.0%
Carver	10	80.0%	90.0%	7	42.9%	85.7%	6	83.3%	83.3%
Cass	13	53.8%	38.5%	9	55.6%	66.7%	6	16.7%	50.0%
Chippewa	1	0.0%	0.0%	0			1	0.0%	100.0%
Chisago	12	58.3%	75.0%	10	70.0%	70.0%	7	85.7%	57.1%
Clay	14	85.7%	85.7%	18	55.6%	50.0%	8	62.5%	100.0%
Clearwater	5	60.0%	80.0%	3	66.7%	66.7%	0		
Cook	1	100.0%	100.0%	0			0		
Cottonwood	3	100.0%	66.7%	3	33.3%	66.7%	5	100.0%	100.0%
Crow Wing	21	76.2%	61.9%	12	58.3%	50.0%	10	60.0%	90.0%
Dakota	53	84.9%	75.5%	53	73.6%	75.5%	57	70.2%	73.7%
Dodge	5	60.0%	80.0%	4	100.0%	100.0%	3	100.0%	66.7%
Douglas	5	80.0%	100.0%	4	50.0%	75.0%	3	66.7%	100.0%
Faribault	1	100.0%	100.0%	8	75.0%	62.5%	4	75.0%	75.0%
Fillmore	5	80.0%	80.0%	3	100.0%	100.0%	3	66.7%	33.3%
Freeborn	8	87.5%	100.0%	8	37.5%	50.0%	10	40.0%	50.0%
Goodhue	7	57.1%	57.1%	7	85.7%	85.7%	10	80.0%	70.0%
Grant	2	50.0%	100.0%	0			1	0.0%	100.0%
Hennepin	261	52.5%	58.6%	221	60.6%	59.3%	231	53.2%	59.3%
Houston	3	66.7%	66.7%	5	80.0%	40.0%	6	66.7%	66.7%
Hubbard	6	83.3%	66.7%	4	75.0%	75.0%	4	50.0%	100.0%
Isanti	9	66.7%	77.8%	11	90.9%	90.9%	9	66.7%	66.7%
Itasca	8	50.0%	75.0%	14	71.4%	71.4%	8	50.0%	62.5%
Jackson	1	100.0%	100.0%	2	100.0%	50.0%	2	100.0%	100.0%
Kanabec	5	40.0%	80.0%	4	75.0%	75.0%	3	33.3%	100.0%
Kandiyohi	12	91.7%	83.3%	10	60.0%	60.0%	18	66.7%	77.8%
Kittson	0			0			0		
Koochiching	1	100.0%	100.0%	3	66.7%	66.7%	1	0.0%	100.0%
Lac qui Parle	0			1	0.0%	100.0%	0		
Lake	1	100.0%	100.0%	1	0.0%	100.0%	2	50.0%	50.0%
Lake of the Woods	0			0			1	100.0%	100.0%
LeSueur	5	80.0%	80.0%	3	66.7%	100.0%	6	83.3%	83.3%
Lincoln	0			1	0.0%	100.0%	1	100.0%	0.0%
Lyon	5	60.0%	80.0%	10	90.0%	70.0%	9	55.6%	77.8%
Mcleod	12	75.0%	83.3%	4	50.0%	100.0%	7	71.4%	28.6%
Mahnomen	2	100.0%	100.0%	5	80.0%	60.0%	7	57.1%	71.4%
Marshall	0			1	100.0%	100.0%	1	100.0%	0.0%
Martin	3	33.3%	0.0%	3	100.0%	100.0%	1	100.0%	100.0%
Meeker	4	75.0%	75.0%	9	88.9%	66.7%	3	66.7%	33.3%

Fifth and Twelfth Month Status of Monthly DWP Case Cohorts - July, August, September 2007

County	July 2007 DWP Eligible			August 2007 DWP Eligible			September 2007 DWP Eligible		
	Total Cases in Cohort	Percent Off MFIP Cash in 5th Month	Percent Off MFIP Cash in 12th Month	Total Cases in Cohort	Percent Off MFIP Cash in 5th Month	Percent Off MFIP Cash in 12th Month	Total Cases in Cohort	Percent Off MFIP Cash in 5th Month	Percent Off MFIP Cash in 12th Month
Mille Lacs	1	0.0%	0.0%	7	85.7%	100.0%	2	50.0%	50.0%
Morrison	8	50.0%	75.0%	5	60.0%	100.0%	4	100.0%	100.0%
Mower	5	40.0%	60.0%	7	71.4%	85.7%	8	50.0%	25.0%
Murray	1	100.0%	0.0%	2	0.0%	50.0%	1	100.0%	100.0%
Nicollet	9	66.7%	88.9%	6	33.3%	16.7%	3	66.7%	100.0%
Nobles	8	37.5%	75.0%	5	100.0%	60.0%	5	80.0%	80.0%
Norman	5	100.0%	80.0%	4	75.0%	25.0%	2	100.0%	50.0%
Olmsted	33	78.8%	75.8%	34	64.7%	67.6%	37	78.4%	70.3%
Otter Tail	8	87.5%	75.0%	11	100.0%	63.6%	6	50.0%	83.3%
Pennington	4	75.0%	75.0%	3	0.0%	33.3%	3	33.3%	66.7%
Pine	6	66.7%	83.3%	7	71.4%	85.7%	10	70.0%	80.0%
Pipestone	5	80.0%	100.0%	1	100.0%	100.0%	1	0.0%	0.0%
Polk	13	76.9%	76.9%	5	40.0%	40.0%	8	75.0%	62.5%
Pope	1	0.0%	100.0%	0			2	100.0%	100.0%
Ramsey	160	51.3%	55.0%	150	41.3%	50.7%	150	38.7%	56.0%
Red Lake	0			0			2	100.0%	100.0%
Redwood	2	100.0%	100.0%	5	40.0%	40.0%	5	60.0%	80.0%
Renville	4	50.0%	75.0%	4	100.0%	100.0%	3	66.7%	100.0%
Rice	18	55.6%	72.2%	14	64.3%	57.1%	12	50.0%	58.3%
Rock	3	100.0%	100.0%	3	66.7%	66.7%	2	100.0%	100.0%
Roseau	2	100.0%	100.0%	4	75.0%	75.0%	6	66.7%	83.3%
St. Louis	35	54.3%	68.6%	32	46.9%	62.5%	41	68.3%	80.5%
Scott	15	100.0%	93.3%	18	61.1%	77.8%	11	63.6%	81.8%
Sherburne	15	80.0%	80.0%	10	70.0%	70.0%	7	100.0%	71.4%
Sibley	8	100.0%	100.0%	5	80.0%	60.0%	3	0.0%	33.3%
Stearns	21	47.6%	57.1%	32	40.6%	75.0%	27	51.9%	77.8%
Steele	4	75.0%	50.0%	2	50.0%	100.0%	4	100.0%	75.0%
Stevens	0			0			0		
Swift	1	100.0%	100.0%	0			0		
Todd	8	37.5%	50.0%	9	33.3%	77.8%	5	60.0%	60.0%
Traverse	1	100.0%	0.0%	0			0		
Wabasha	1	100.0%	100.0%	2	50.0%	100.0%	1	0.0%	0.0%
Wadena	1	0.0%	100.0%	7	85.7%	100.0%	3	66.7%	33.3%
Waseca	5	60.0%	80.0%	6	83.3%	83.3%	3	66.7%	33.3%
Washington	18	77.8%	50.0%	26	76.9%	76.9%	15	66.7%	53.3%
Watsonwan	5	80.0%	60.0%	1	100.0%	100.0%	1	100.0%	100.0%
Wilkin	3	100.0%	100.0%	4	100.0%	100.0%	1	100.0%	0.0%
Winona	6	83.3%	66.7%	6	33.3%	83.3%	7	100.0%	42.9%
Wright	17	82.4%	76.5%	16	81.3%	87.5%	12	100.0%	91.7%
Yellow Medicine	0			2	50.0%	50.0%	0		

Fifth and Twelfth Month Status of Monthly DWP Case Cohorts - October, November, December 2007

County	October 2007 DWP Eligible			November 2007 DWP Eligible			December 2007 DWP Eligible		
	Total Cases in Cohort	Percent Off MFIP Cash in 5th Month	Percent Off MFIP Cash in 12th Month	Total Cases in Cohort	Percent Off MFIP Cash in 5th Month	Percent Off MFIP Cash in 12th Month	Total Cases in Cohort	Percent Off MFIP Cash in 5th Month	Percent Off MFIP Cash in 12th Month
State	966	59.8%	62.9%	879	60.9%	65.0%	886	63.7%	66.0%
Aitkin	4	25.0%	75.0%	4	75.0%	100.0%	1	100.0%	100.0%
Anoka	44	70.5%	63.6%	61	68.9%	68.9%	72	68.1%	73.6%
Becker	9	88.9%	55.6%	6	66.7%	66.7%	4	25.0%	100.0%
Beltrami	14	50.0%	71.4%	18	55.6%	50.0%	17	29.4%	47.1%
Benton	5	80.0%	40.0%	5	20.0%	80.0%	3	100.0%	33.3%
Big Stone	0			1	100.0%	100.0%	3	33.3%	66.7%
Blue Earth	14	57.1%	78.6%	7	42.9%	71.4%	10	60.0%	70.0%
Brown	1	100.0%	100.0%	5	60.0%	60.0%	3	66.7%	100.0%
Carlton	6	50.0%	100.0%	6	83.3%	83.3%	4	75.0%	100.0%
Carver	5	80.0%	80.0%	5	100.0%	100.0%	9	88.9%	88.9%
Cass	12	75.0%	100.0%	14	57.1%	64.3%	5	100.0%	40.0%
Chippewa	2	100.0%	50.0%	2	100.0%	100.0%	1	100.0%	100.0%
Chisago	5	100.0%	80.0%	9	77.8%	55.6%	11	63.6%	81.8%
Clay	14	78.6%	78.6%	9	88.9%	88.9%	12	50.0%	66.7%
Clearwater	6	66.7%	83.3%	1	100.0%	100.0%	3	100.0%	66.7%
Cook	0			1	100.0%	0.0%	0		
Cottonwood	3	66.7%	66.7%	2	50.0%	50.0%	3	66.7%	100.0%
Crow Wing	10	70.0%	70.0%	15	73.3%	86.7%	15	53.3%	80.0%
Dakota	46	93.5%	91.3%	52	78.8%	65.4%	51	84.3%	78.4%
Dodge	1	100.0%	100.0%	1	100.0%	100.0%	2	50.0%	100.0%
Douglas	4	50.0%	75.0%	3	100.0%	66.7%	6	83.3%	100.0%
Faribault	1	100.0%	100.0%	0			1	0.0%	100.0%
Fillmore	3	100.0%	66.7%	5	60.0%	60.0%	1	0.0%	100.0%
Freeborn	7	42.9%	42.9%	6	66.7%	50.0%	5	60.0%	100.0%
Goodhue	8	62.5%	87.5%	5	100.0%	100.0%	8	37.5%	50.0%
Grant	0			2	50.0%	100.0%	4	75.0%	75.0%
Hennepin	203	52.7%	53.2%	200	51.5%	53.5%	185	56.2%	50.8%
Houston	4	100.0%	100.0%	2	50.0%	100.0%	2	50.0%	100.0%
Hubbard	4	75.0%	50.0%	5	80.0%	100.0%	5	60.0%	80.0%
Isanti	10	90.0%	80.0%	7	57.1%	85.7%	10	70.0%	90.0%
Itasca	6	83.3%	83.3%	14	71.4%	64.3%	16	56.3%	43.8%
Jackson	2	100.0%	100.0%	2	50.0%	100.0%	2	100.0%	50.0%
Kanabec	4	25.0%	50.0%	1	100.0%	100.0%	6	100.0%	66.7%
Kandiyohi	23	82.6%	78.3%	11	54.5%	72.7%	13	61.5%	69.2%
Kittson	0			1	0.0%	0.0%	1	0.0%	100.0%
Koochiching	2	100.0%	100.0%	5	60.0%	100.0%	2	100.0%	100.0%
Lac qui Parle	0			0			0		
Lake	0			2	50.0%	50.0%	3	100.0%	100.0%
Lake of the Woods	0			0			0		
LeSueur	5	40.0%	40.0%	6	83.3%	83.3%	6	83.3%	100.0%
Lincoln	0			0			1	100.0%	0.0%
Lyon	3	66.7%	66.7%	2	50.0%	50.0%	2	100.0%	100.0%
Mcleod	9	66.7%	77.8%	5	80.0%	100.0%	4	100.0%	100.0%
Mahnomen	3	66.7%	66.7%	4	25.0%	75.0%	2	100.0%	100.0%
Marshall	0			1	0.0%	100.0%	2	0.0%	0.0%
Martin	6	66.7%	83.3%	3	33.3%	100.0%	5	100.0%	80.0%
Meeker	5	80.0%	60.0%	1	100.0%	0.0%	2	0.0%	100.0%



Fifth and Twelfth Month Status of Monthly DWP Case Cohorts - October, November, December 2007

County	October 2007 DWP Eligible			November 2007 DWP Eligible			December 2007 DWP Eligible		
	Total Cases in Cohort	Percent Off MFIP Cash in 5th Month	Percent Off MFIP Cash in 12th Month	Total Cases in Cohort	Percent Off MFIP Cash in 5th Month	Percent Off MFIP Cash in 12th Month	Total Cases in Cohort	Percent Off MFIP Cash in 5th Month	Percent Off MFIP Cash in 12th Month
Mille Lacs	7	57.1%	85.7%	5	60.0%	60.0%	11	63.6%	81.8%
Morrison	7	71.4%	57.1%	1	0.0%	100.0%	4	75.0%	50.0%
Mower	13	46.2%	53.8%	11	54.5%	90.9%	7	71.4%	71.4%
Murray	0			0			0		
Nicollet	10	40.0%	50.0%	7	42.9%	57.1%	5	40.0%	60.0%
Nobles	8	50.0%	62.5%	3	66.7%	66.7%	5	60.0%	60.0%
Norman	0			2	50.0%	0.0%	2	0.0%	50.0%
Olmsted	26	61.5%	57.7%	26	65.4%	65.4%	38	81.6%	73.7%
Otter Tail	6	66.7%	83.3%	7	85.7%	71.4%	9	66.7%	66.7%
Pennington	1	0.0%	100.0%	5	100.0%	60.0%	1	0.0%	100.0%
Pine	11	63.6%	72.7%	11	63.6%	63.6%	7	71.4%	71.4%
Pipestone	3	66.7%	100.0%	1	100.0%	100.0%	2	100.0%	100.0%
Polk	9	55.6%	33.3%	3	66.7%	100.0%	4	75.0%	100.0%
Pope	2	100.0%	100.0%	0			2	100.0%	50.0%
Ramsey	165	43.6%	45.5%	120	42.5%	48.3%	110	44.5%	51.8%
Red Lake	1	0.0%	0.0%	3	66.7%	100.0%	0		
Redwood	6	16.7%	50.0%	4	75.0%	75.0%	4	75.0%	100.0%
Renville	2	100.0%	100.0%	2	100.0%	100.0%	5	100.0%	100.0%
Rice	9	66.7%	77.8%	7	85.7%	85.7%	5	80.0%	100.0%
Rock	0			1	0.0%	100.0%	2	0.0%	50.0%
Roseau	0			0			0		
St. Louis	49	59.2%	73.5%	33	63.6%	69.7%	34	73.5%	58.8%
Scott	11	63.6%	72.7%	12	41.7%	66.7%	19	73.7%	78.9%
Sherburne	11	63.6%	63.6%	9	100.0%	88.9%	13	92.3%	92.3%
Sibley	2	50.0%	100.0%	6	83.3%	66.7%	1	100.0%	100.0%
Stearns	17	47.1%	58.8%	18	50.0%	61.1%	22	68.2%	59.1%
Steele	6	100.0%	83.3%	4	75.0%	100.0%	5	40.0%	60.0%
Stevens	0			1	100.0%	100.0%	0		
Swift	1	100.0%	100.0%	3	66.7%	33.3%	1	0.0%	0.0%
Todd	7	57.1%	85.7%	5	80.0%	100.0%	3	66.7%	66.7%
Traverse	2	50.0%	50.0%	0			1	100.0%	100.0%
Wabasha	4	50.0%	75.0%	5	20.0%	80.0%	2	50.0%	0.0%
Wadena	4	50.0%	25.0%	5	60.0%	40.0%	2	100.0%	100.0%
Waseca	2	50.0%	50.0%	3	66.7%	66.7%	4	25.0%	50.0%
Washington	23	69.6%	65.2%	17	76.5%	82.4%	13	69.2%	61.5%
Watsonwan	4	75.0%	50.0%	2	50.0%	100.0%	0		
Wilkin	4	75.0%	100.0%	1	100.0%	100.0%	0		
Winona	5	40.0%	40.0%	6	100.0%	83.3%	7	85.7%	100.0%
Wright	14	50.0%	64.3%	13	84.6%	92.3%	11	81.8%	90.9%
Yellow Medicine	1	100.0%	100.0%	0			2	50.0%	50.0%

Fifth and Twelfth Month Status of Monthly DWP Case Cohorts - January, February, March 2008

County	January 2008 DWP Eligible			February 2008 DWP Eligible			March 2008 DWP Eligible		
	Total Cases in Cohort	Percent Off MFIP Cash in 5th Month	Percent Off MFIP Cash in 12th Month	Total Cases in Cohort	Percent Off MFIP Cash in 5th Month	Percent Off MFIP Cash in 12th Month	Total Cases in Cohort	Percent Off MFIP Cash in 5th Month	Percent Off MFIP Cash in 12th Month
State	1029	62.9%	66.1%	798	63.3%	66.5%	865	63.2%	68.0%
Aitkin	6	83.3%	16.7%	3	33.3%	66.7%	3	100.0%	100.0%
Anoka	69	73.9%	81.2%	66	63.6%	63.6%	61	63.9%	73.8%
Becker	11	72.7%	72.7%	5	80.0%	80.0%	5	60.0%	80.0%
Beltrami	17	70.6%	70.6%	18	66.7%	83.3%	12	58.3%	66.7%
Benton	5	60.0%	80.0%	7	71.4%	71.4%	6	100.0%	83.3%
Big Stone	3	66.7%	100.0%	1	100.0%	100.0%	0		
Blue Earth	13	53.8%	69.2%	12	75.0%	75.0%	5	80.0%	40.0%
Brown	2	0.0%	0.0%	1	100.0%	100.0%	5	100.0%	100.0%
Carlton	12	58.3%	66.7%	7	71.4%	85.7%	8	62.5%	50.0%
Carver	7	85.7%	71.4%	2	50.0%	50.0%	10	70.0%	90.0%
Cass	13	61.5%	69.2%	10	70.0%	70.0%	10	80.0%	100.0%
Chippewa	6	66.7%	50.0%	1	0.0%	100.0%	1	100.0%	100.0%
Chisago	10	70.0%	80.0%	10	70.0%	90.0%	9	88.9%	77.8%
Clay	8	62.5%	62.5%	11	72.7%	81.8%	5	60.0%	80.0%
Clearwater	1	0.0%	100.0%	2	100.0%	0.0%	2	50.0%	100.0%
Cook	0			1	100.0%	100.0%	1	100.0%	100.0%
Cottonwood	7	71.4%	85.7%	6	50.0%	66.7%	2	50.0%	50.0%
Crow Wing	15	93.3%	66.7%	3	33.3%	66.7%	9	66.7%	77.8%
Dakota	48	75.0%	72.9%	52	84.6%	71.2%	43	86.0%	86.0%
Dodge	3	33.3%	66.7%	3	33.3%	66.7%	2	100.0%	100.0%
Douglas	5	60.0%	60.0%	2	100.0%	100.0%	2	50.0%	50.0%
Faribault	5	60.0%	40.0%	2	100.0%	50.0%	0		
Fillmore	5	40.0%	60.0%	4	100.0%	50.0%	2	100.0%	100.0%
Freeborn	6	50.0%	66.7%	7	42.9%	57.1%	11	72.7%	90.9%
Goodhue	9	88.9%	77.8%	9	66.7%	100.0%	3	33.3%	66.7%
Grant	2	50.0%	50.0%	0			1	100.0%	100.0%
Hennepin	210	55.2%	57.6%	165	54.5%	56.4%	206	47.1%	53.9%
Houston	6	83.3%	66.7%	4	50.0%	50.0%	4	50.0%	50.0%
Hubbard	6	66.7%	66.7%	2	100.0%	100.0%	1	100.0%	100.0%
Isanti	10	80.0%	90.0%	7	85.7%	71.4%	12	66.7%	66.7%
Itasca	6	33.3%	66.7%	11	63.6%	54.5%	1	100.0%	0.0%
Jackson	0			0			1	100.0%	100.0%
Kanabec	8	75.0%	62.5%	3	66.7%	33.3%	3	66.7%	66.7%
Kandiyohi	13	61.5%	84.6%	8	87.5%	100.0%	12	83.3%	91.7%
Kittson	0			1	100.0%	100.0%	0		
Koochiching	2	0.0%	0.0%	0			2	100.0%	100.0%
Lac qui Parle	0			1	100.0%	0.0%	1	100.0%	100.0%
Lake	1	100.0%	100.0%	0			4	75.0%	50.0%
Lake of the Woods	1	0.0%	0.0%	0			0		
LeSueur	7	71.4%	71.4%	9	66.7%	88.9%	4	100.0%	100.0%
Lincoln	1	100.0%	100.0%	0			1	100.0%	100.0%
Lyon	7	71.4%	42.9%	3	100.0%	100.0%	3	100.0%	100.0%
Mcleod	7	57.1%	71.4%	5	100.0%	60.0%	7	100.0%	85.7%
Mahnomen	2	50.0%	100.0%	2	0.0%	50.0%	6	50.0%	50.0%
Marshall	1	100.0%	100.0%	0			4	100.0%	100.0%
Martin	2	50.0%	0.0%	4	100.0%	100.0%	2	100.0%	100.0%
Meeker	6	66.7%	83.3%	6	66.7%	83.3%	3	66.7%	100.0%

Fifth and Twelfth Month Status of Monthly DWP Case Cohorts - January, February, March 2008

County	January 2008 DWP Eligible			February 2008 DWP Eligible			March 2008 DWP Eligible		
	Total Cases in Cohort	Percent Off MFIP Cash in 5th Month	Percent Off MFIP Cash in 12th Month	Total Cases in Cohort	Percent Off MFIP Cash in 5th Month	Percent Off MFIP Cash in 12th Month	Total Cases in Cohort	Percent Off MFIP Cash in 5th Month	Percent Off MFIP Cash in 12th Month
Mille Lacs	13	76.9%	76.9%	10	70.0%	80.0%	5	100.0%	100.0%
Morrison	9	33.3%	33.3%	6	50.0%	50.0%	0		
Mower	8	62.5%	62.5%	6	50.0%	66.7%	11	63.6%	81.8%
Murray	0			0			2	100.0%	100.0%
Nicollet	5	80.0%	80.0%	3	66.7%	66.7%	1	0.0%	0.0%
Nobles	5	80.0%	80.0%	7	57.1%	85.7%	3	33.3%	66.7%
Norman	0			2	100.0%	50.0%	1	100.0%	0.0%
Olmsted	31	64.5%	74.2%	23	60.9%	82.6%	21	66.7%	66.7%
Otter Tail	12	66.7%	50.0%	4	50.0%	75.0%	5	60.0%	60.0%
Pennington	3	66.7%	66.7%	2	100.0%	100.0%	1	100.0%	100.0%
Pine	11	54.5%	81.8%	10	50.0%	70.0%	10	70.0%	60.0%
Pipestone	1	100.0%	0.0%	2	100.0%	50.0%	2	100.0%	50.0%
Polk	8	75.0%	87.5%	3	100.0%	100.0%	9	66.7%	77.8%
Pope	2	100.0%	50.0%	0			1	100.0%	100.0%
Ramsey	141	46.8%	53.2%	102	50.0%	58.8%	121	47.1%	55.4%
Red Lake	1	100.0%	100.0%	1	0.0%	100.0%	2	50.0%	100.0%
Redwood	2	50.0%	100.0%	4	100.0%	100.0%	1	100.0%	100.0%
Renville	5	80.0%	100.0%	0			4	100.0%	100.0%
Rice	13	61.5%	84.6%	7	85.7%	85.7%	13	69.2%	69.2%
Rock	1	0.0%	0.0%	3	33.3%	33.3%	1	100.0%	100.0%
Roseau	1	0.0%	0.0%	1	0.0%	0.0%	2	100.0%	100.0%
St. Louis	38	71.1%	60.5%	35	51.4%	60.0%	43	62.8%	79.1%
Scott	14	64.3%	85.7%	10	70.0%	80.0%	18	72.2%	61.1%
Sherburne	10	100.0%	80.0%	14	92.9%	64.3%	17	82.4%	88.2%
Sibley	2	50.0%	100.0%	1	0.0%	0.0%	3	66.7%	100.0%
Stearns	25	56.0%	72.0%	19	57.9%	57.9%	20	60.0%	45.0%
Steele	7	71.4%	85.7%	3	100.0%	100.0%	6	66.7%	83.3%
Stevens	0			0			0		
Swift	5	80.0%	40.0%	0			2	50.0%	50.0%
Todd	6	66.7%	83.3%	1	0.0%	0.0%	2	50.0%	100.0%
Traverse	0			2	100.0%	100.0%	2	50.0%	0.0%
Wabasha	3	33.3%	66.7%	2	50.0%	50.0%	1	100.0%	100.0%
Wadena	6	33.3%	50.0%	3	33.3%	66.7%	4	75.0%	75.0%
Waseca	2	50.0%	50.0%	2	50.0%	100.0%	4	50.0%	50.0%
Washington	23	87.0%	87.0%	13	76.9%	53.8%	9	77.8%	77.8%
Watonwan	1	100.0%	100.0%	1	100.0%	0.0%	1	100.0%	100.0%
Wilkin	1	0.0%	0.0%	0			0		
Winona	7	71.4%	85.7%	3	33.3%	33.3%	6	83.3%	83.3%
Wright	22	81.8%	72.7%	17	76.5%	88.2%	15	93.3%	80.0%
Yellow Medicine	1	100.0%	100.0%	0			1	0.0%	0.0%

Fifth and Twelfth Month Status of Monthly DWP Case Cohorts - April, May, June 2008

County	April 2008 DWP Eligible			May 2008 DWP Eligible			June 2008 DWP Eligible		
	Total Cases in Cohort	Percent Off MFIP Cash in 5th Month	Percent Off MFIP Cash in 12th Month	Total Cases in Cohort	Percent Off MFIP Cash in 5th Month	Percent Off MFIP Cash in 12th Month	Total Cases in Cohort	Percent Off MFIP Cash in 5th Month	Percent Off MFIP Cash in 12th Month
State	975	63.2%	65.5%	841	65.2%	64.4%	902	64.6%	65.3%
Aitkin	2	50.0%	50.0%	1	0.0%	0.0%	4	50.0%	75.0%
Anoka	48	75.0%	72.9%	53	64.2%	58.5%	60	76.7%	70.0%
Becker	8	37.5%	25.0%	3	100.0%	33.3%	9	55.6%	33.3%
Beltrami	25	52.0%	68.0%	12	83.3%	75.0%	16	81.3%	75.0%
Benton	9	88.9%	100.0%	4	75.0%	75.0%	6	100.0%	66.7%
Big Stone	1	0.0%	0.0%	1	100.0%	0.0%	0		
Blue Earth	10	50.0%	50.0%	6	50.0%	100.0%	13	53.8%	61.5%
Brown	1	0.0%	100.0%	6	100.0%	100.0%	13	84.6%	92.3%
Carlton	8	62.5%	62.5%	10	100.0%	80.0%	5	100.0%	80.0%
Carver	7	100.0%	100.0%	6	100.0%	100.0%	10	90.0%	70.0%
Cass	12	75.0%	66.7%	6	83.3%	66.7%	4	75.0%	75.0%
Chippewa	3	100.0%	100.0%	3	66.7%	33.3%	0		
Chisago	6	83.3%	66.7%	8	25.0%	75.0%	9	100.0%	88.9%
Clay	11	90.9%	100.0%	11	54.5%	54.5%	8	87.5%	87.5%
Clearwater	4	100.0%	100.0%	2	50.0%	50.0%	2	100.0%	100.0%
Cook	0			0			0		
Cottonwood	1	100.0%	100.0%	4	75.0%	75.0%	5	80.0%	100.0%
Crow Wing	15	73.3%	66.7%	9	88.9%	66.7%	8	50.0%	75.0%
Dakota	48	68.8%	70.8%	42	76.2%	59.5%	54	81.5%	72.2%
Dodge	3	100.0%	100.0%	4	75.0%	100.0%	3	100.0%	100.0%
Douglas	8	87.5%	62.5%	4	75.0%	75.0%	3	100.0%	100.0%
Faribault	2	100.0%	100.0%	3	100.0%	100.0%	7	57.1%	71.4%
Fillmore	6	83.3%	50.0%	1	0.0%	0.0%	3	66.7%	66.7%
Freeborn	9	44.4%	77.8%	10	40.0%	50.0%	5	60.0%	80.0%
Goodhue	5	100.0%	60.0%	5	80.0%	80.0%	6	100.0%	83.3%
Grant	1	100.0%	100.0%	0			1	100.0%	0.0%
Hennepin	241	51.5%	58.9%	207	54.6%	54.6%	202	55.4%	52.5%
Houston	2	100.0%	50.0%	7	42.9%	71.4%	4	25.0%	50.0%
Hubbard	3	66.7%	66.7%	2	50.0%	100.0%	1	100.0%	0.0%
Isanti	7	100.0%	71.4%	11	63.6%	63.6%	6	50.0%	83.3%
Itasca	11	90.9%	100.0%	9	55.6%	55.6%	11	63.6%	72.7%
Jackson	4	100.0%	100.0%	1	100.0%	0.0%	0		
Kanabec	6	83.3%	83.3%	3	66.7%	66.7%	3	100.0%	100.0%
Kandiyohi	8	100.0%	75.0%	8	100.0%	87.5%	15	86.7%	86.7%
Kittson	1	0.0%	0.0%	0			0		
Koochiching	5	60.0%	60.0%	3	100.0%	100.0%	3	66.7%	100.0%
Lac qui Parle	1	100.0%	100.0%	1	100.0%	0.0%	1	0.0%	100.0%
Lake	0			1	100.0%	100.0%	0		
Lake of the Woods	0			0			3	66.7%	66.7%
LeSueur	8	75.0%	75.0%	7	57.1%	71.4%	4	75.0%	75.0%
Lincoln	0			0			0		
Lyon	6	66.7%	66.7%	3	100.0%	66.7%	5	100.0%	100.0%
Mcleod	13	69.2%	46.2%	3	66.7%	100.0%	4	50.0%	75.0%
Mahnomen	3	66.7%	33.3%	1	100.0%	100.0%	0		
Marshall	2	100.0%	100.0%	1	100.0%	100.0%	3	66.7%	100.0%
Martin	3	100.0%	100.0%	2	100.0%	100.0%	5	60.0%	80.0%
Meeker	1	100.0%	100.0%	2	50.0%	50.0%	4	100.0%	100.0%

Fifth and Twelfth Month Status of Monthly DWP Case Cohorts - April, May, June 2008

County	April 2008 DWP Eligible			May 2008 DWP Eligible			June 2008 DWP Eligible		
	Total Cases in Cohort	Percent Off MFIP Cash in 5th Month	Percent Off MFIP Cash in 12th Month	Total Cases in Cohort	Percent Off MFIP Cash in 5th Month	Percent Off MFIP Cash in 12th Month	Total Cases in Cohort	Percent Off MFIP Cash in 5th Month	Percent Off MFIP Cash in 12th Month
Mille Lacs	5	20.0%	100.0%	0			4	50.0%	50.0%
Morrison	2	100.0%	100.0%	10	70.0%	70.0%	4	75.0%	50.0%
Mower	7	42.9%	71.4%	8	75.0%	87.5%	6	16.7%	33.3%
Murray	3	100.0%	100.0%	0			0		
Nicollet	11	63.6%	63.6%	4	100.0%	75.0%	3	0.0%	33.3%
Nobles	4	100.0%	100.0%	5	40.0%	20.0%	2	50.0%	50.0%
Norman	2	100.0%	50.0%	2	50.0%	0.0%	2	100.0%	100.0%
Olmsted	42	61.9%	61.9%	31	54.8%	51.6%	28	71.4%	75.0%
Otter Tail	6	83.3%	66.7%	5	60.0%	100.0%	7	57.1%	71.4%
Pennington	3	100.0%	66.7%	3	100.0%	100.0%	2	100.0%	100.0%
Pine	6	83.3%	83.3%	11	63.6%	72.7%	6	66.7%	100.0%
Pipestone	5	80.0%	80.0%	1	100.0%	100.0%	2	100.0%	100.0%
Polk	2	100.0%	100.0%	4	75.0%	75.0%	13	61.5%	76.9%
Pope	0			1	100.0%	100.0%	0		
Ramsey	139	50.4%	50.4%	105	50.5%	56.2%	126	50.0%	54.8%
Red Lake	1	100.0%	100.0%	3	100.0%	100.0%	1	0.0%	0.0%
Redwood	1	0.0%	100.0%	1	100.0%	100.0%	5	40.0%	80.0%
Renville	1	100.0%	100.0%	1	100.0%	100.0%	5	80.0%	100.0%
Rice	6	66.7%	83.3%	11	90.9%	100.0%	6	50.0%	66.7%
Rock	2	50.0%	50.0%	0			0		
Roseau	2	0.0%	50.0%	0			2	100.0%	50.0%
St. Louis	42	64.3%	76.2%	36	61.1%	69.4%	40	45.0%	57.5%
Scott	10	40.0%	90.0%	16	87.5%	68.8%	12	58.3%	58.3%
Sherburne	12	91.7%	91.7%	11	90.9%	72.7%	8	50.0%	62.5%
Sibley	2	100.0%	100.0%	2	100.0%	100.0%	1	100.0%	100.0%
Stearns	18	50.0%	33.3%	23	82.6%	78.3%	22	59.1%	72.7%
Steele	4	50.0%	50.0%	5	100.0%	100.0%	8	75.0%	62.5%
Stevens	2	50.0%	100.0%	0			1	100.0%	100.0%
Swift	0			1	100.0%	100.0%	0		
Todd	1	0.0%	100.0%	2	100.0%	50.0%	5	80.0%	80.0%
Traverse	0			0			0		
Wabasha	0			3	66.7%	66.7%	1	0.0%	100.0%
Wadena	3	33.3%	100.0%	3	66.7%	66.7%	5	80.0%	80.0%
Waseca	5	40.0%	60.0%	3	66.7%	33.3%	1	100.0%	0.0%
Washington	19	94.7%	68.4%	25	76.0%	88.0%	23	87.0%	65.2%
Watsonwan	1	0.0%	0.0%	0			1	100.0%	100.0%
Wilkin	1	100.0%	0.0%	1	0.0%	100.0%	6	100.0%	100.0%
Winona	7	57.1%	42.9%	6	66.7%	33.3%	5	80.0%	20.0%
Wright	20	80.0%	90.0%	12	83.3%	83.3%	11	72.7%	72.7%
Yellow Medicine	0			0			0		

Fifth and Twelfth Month Status of Monthly DWP Case Cohorts - July, August, September 2008

County	July 2008 DWP Eligible			August 2008 DWP Eligible			September 2008 DWP Eligible		
	Total Cases in Cohort	Percent Off MFIP Cash in 5th Month	Percent Off MFIP Cash in 12th Month	Total Cases in Cohort	Percent Off MFIP Cash in 5th Month	Percent Off MFIP Cash in 12th Month	Total Cases in Cohort	Percent Off MFIP Cash in 5th Month	Percent Off MFIP Cash in 12th Month
State	1009	68.4%	66.9%	941	63.5%	62.6%	954	59.4%	62.7%
Aitkin	2	100.0%	100.0%	3	100.0%	100.0%	6	66.7%	83.3%
Anoka	64	85.9%	78.1%	80	63.8%	60.0%	62	62.9%	66.1%
Becker	2	50.0%	100.0%	10	70.0%	30.0%	9	55.6%	88.9%
Beltrami	23	60.9%	69.6%	15	53.3%	60.0%	25	44.0%	52.0%
Benton	10	80.0%	50.0%	7	71.4%	57.1%	2	100.0%	50.0%
Big Stone	3	100.0%	66.7%	1	100.0%	100.0%	0		
Blue Earth	6	66.7%	50.0%	11	72.7%	63.6%	14	64.3%	64.3%
Brown	9	100.0%	88.9%	7	57.1%	100.0%	7	85.7%	71.4%
Carlton	5	60.0%	40.0%	3	100.0%	66.7%	7	57.1%	71.4%
Carver	4	50.0%	75.0%	8	100.0%	37.5%	10	90.0%	90.0%
Cass	5	80.0%	80.0%	10	80.0%	40.0%	6	16.7%	50.0%
Chippewa	4	100.0%	25.0%	3	66.7%	33.3%	1	0.0%	0.0%
Chisago	3	66.7%	100.0%	10	90.0%	80.0%	4	75.0%	75.0%
Clay	10	70.0%	90.0%	13	69.2%	69.2%	10	40.0%	50.0%
Clearwater	0			4	50.0%	50.0%	6	100.0%	83.3%
Cook	0			1	0.0%		1	100.0%	100.0%
Cottonwood	1	100.0%	100.0%	5	80.0%	60.0%	1	0.0%	0.0%
Crow Wing	16	62.5%	68.8%	9	77.8%	77.8%	12	83.3%	83.3%
Dakota	52	80.8%	82.7%	43	83.7%	69.8%	51	82.4%	74.5%
Dodge	2	100.0%	100.0%	3	33.3%	66.7%	3	100.0%	100.0%
Douglas	9	88.9%	55.6%	5	80.0%	100.0%	6	66.7%	83.3%
Faribault	4	100.0%	75.0%	4	100.0%	100.0%	9	44.4%	55.6%
Fillmore	3	33.3%	33.3%	0			1	100.0%	100.0%
Freeborn	6	66.7%	50.0%	7	57.1%	71.4%	9	88.9%	88.9%
Goodhue	9	55.6%	88.9%	4	25.0%	50.0%	5	60.0%	100.0%
Grant	0			0			0		
Hennepin	249	59.8%	57.8%	218	57.8%	60.1%	215	53.5%	53.0%
Houston	2	100.0%	100.0%	5	80.0%	80.0%	8	37.5%	50.0%
Hubbard	2	50.0%	100.0%	5	80.0%	60.0%	4	50.0%	50.0%
Isanti	7	71.4%	71.4%	8	50.0%	75.0%	4	75.0%	75.0%
Itasca	10	60.0%	60.0%	11	54.5%	54.5%	11	54.5%	45.5%
Jackson	1	100.0%	0.0%	0			2	50.0%	100.0%
Kanabec	2	50.0%	50.0%	4	50.0%	25.0%	6	50.0%	66.7%
Kandiyohi	19	78.9%	89.5%	7	85.7%	85.7%	15	93.3%	86.7%
Kittson	0			0			1	0.0%	100.0%
Koochiching	0			2	50.0%	100.0%	4	50.0%	75.0%
Lac qui Parle	1	100.0%	100.0%	1	100.0%	100.0%	0		
Lake	2	100.0%	0.0%	1	100.0%	100.0%	1	0.0%	100.0%
Lake of the Woods	1	100.0%	100.0%	1	0.0%	100.0%	0		
LeSueur	6	83.3%	100.0%	5	60.0%	80.0%	8	75.0%	75.0%
Lincoln	0			0			2	100.0%	100.0%
Lyon	10	90.0%	80.0%	8	75.0%	62.5%	4	50.0%	75.0%
Mcleod	9	66.7%	77.8%	8	37.5%	50.0%	4	100.0%	50.0%
Mahnomen	4	75.0%	75.0%	5	80.0%	100.0%	0		
Marshall	1	100.0%	100.0%	1	100.0%	100.0%	0		
Martin	4	100.0%	75.0%	3	100.0%	66.7%	6	83.3%	83.3%
Meeker	4	75.0%	50.0%	1	100.0%	100.0%	5	20.0%	40.0%

Fifth and Twelfth Month Status of Monthly DWP Case Cohorts - July, August, September 2008

County	July 2008 DWP Eligible			August 2008 DWP Eligible			September 2008 DWP Eligible		
	Total Cases in Cohort	Percent Off MFIP Cash in 5th Month	Percent Off MFIP Cash in 12th Month	Total Cases in Cohort	Percent Off MFIP Cash in 5th Month	Percent Off MFIP Cash in 12th Month	Total Cases in Cohort	Percent Off MFIP Cash in 5th Month	Percent Off MFIP Cash in 12th Month
Mille Lacs	6	83.3%	66.7%	4	50.0%	75.0%	5	100.0%	100.0%
Morrison	5	100.0%	80.0%	4	75.0%	75.0%	5	40.0%	60.0%
Mower	6	100.0%	100.0%	5	60.0%	60.0%	12	58.3%	75.0%
Murray	0			1	100.0%	0.0%	2	100.0%	100.0%
Nicollet	7	42.9%	57.1%	5	40.0%	40.0%	6	66.7%	50.0%
Nobles	6	0.0%	66.7%	4	100.0%	75.0%	9	44.4%	55.6%
Norman	4	100.0%	100.0%	2	100.0%	100.0%	1	100.0%	100.0%
Olmsted	42	69.0%	71.4%	35	65.7%	60.0%	31	61.3%	61.3%
Otter Tail	6	66.7%	33.3%	8	75.0%	87.5%	7	42.9%	42.9%
Pennington	1	100.0%	100.0%	1	0.0%	0.0%	1	100.0%	100.0%
Pine	10	70.0%	70.0%	11	45.5%	45.5%	4	75.0%	50.0%
Pipestone	2	100.0%	50.0%	2	50.0%	100.0%	1	100.0%	100.0%
Polk	7	71.4%	85.7%	12	75.0%	83.3%	5	40.0%	20.0%
Pope	1	100.0%	0.0%	0			1	100.0%	100.0%
Ramsey	132	59.1%	56.1%	114	46.5%	52.6%	120	50.8%	53.3%
Red Lake	0			0			2	0.0%	50.0%
Redwood	2	100.0%	100.0%	4	75.0%	50.0%	3	33.3%	66.7%
Renville	6	66.7%	83.3%	1	0.0%	100.0%	6	50.0%	50.0%
Rice	13	69.2%	76.9%	14	64.3%	78.6%	14	64.3%	64.3%
Rock	0			2	0.0%	100.0%	2	100.0%	100.0%
Roseau	2	0.0%	50.0%	0			0		
St. Louis	45	53.3%	48.9%	39	59.0%	61.5%	42	54.8%	66.7%
Scott	16	56.3%	87.5%	9	77.8%	44.4%	13	53.8%	76.9%
Sherburne	10	90.0%	90.0%	11	81.8%	90.9%	11	72.7%	90.9%
Sibley	3	100.0%	33.3%	2	100.0%	100.0%	2	0.0%	50.0%
Stearns	19	63.2%	63.2%	26	53.8%	61.5%	23	47.8%	56.5%
Steele	5	100.0%	80.0%	10	90.0%	80.0%	6	83.3%	83.3%
Stevens	0			0			0		
Swift	0			1	100.0%	100.0%	2	50.0%	100.0%
Todd	4	100.0%	100.0%	4	75.0%	50.0%	2	50.0%	50.0%
Traverse	0			0			0		
Wabasha	0			2	50.0%	50.0%	7	28.6%	28.6%
Wadena	2	50.0%	100.0%	2	100.0%	100.0%	2	50.0%	50.0%
Waseca	4	75.0%	75.0%	3	33.3%	0.0%	2	100.0%	100.0%
Washington	29	72.4%	69.0%	17	82.4%	64.7%	19	68.4%	63.2%
Watsonwan	4	100.0%	75.0%	1	100.0%	0.0%	2	100.0%	50.0%
Wilkin	3	100.0%	100.0%	3	100.0%	100.0%	0		
Winona	5	60.0%	60.0%	7	85.7%	85.7%	0		
Wright	14	92.9%	92.9%	12	75.0%	66.7%	17	70.6%	76.5%
Yellow Medicine	2	50.0%	50.0%	3	66.7%	33.3%	0		

Fifth and Twelfth Month Status of Monthly DWP Case Cohorts - October, November, December 2008

County	October 2008 DWP Eligible			November 2008 DWP Eligible			December 2008 DWP Eligible		
	Total Cases in Cohort	Percent Off MFIP Cash in 5th Month	Percent Off MFIP Cash in 12th Month	Total Cases in Cohort	Percent Off MFIP Cash in 5th Month	Percent Off MFIP Cash in 12th Month	Total Cases in Cohort	Percent Off MFIP Cash in 5th Month	Percent Off MFIP Cash in 12th Month
State	933	55.8%	60.9%	973	60.6%	63.7%	972	61.8%	64.9%
Aitkin	3	33.3%	33.3%	3	100.0%	0.0%	4	75.0%	25.0%
Anoka	77	62.3%	68.8%	85	69.4%	60.0%	70	58.6%	67.1%
Becker	4	50.0%	50.0%	10	80.0%	80.0%	4	100.0%	100.0%
Beltrami	17	52.9%	52.9%	16	50.0%	68.8%	15	46.7%	60.0%
Benton	2	50.0%	50.0%	8	87.5%	62.5%	6	66.7%	66.7%
Big Stone	1	100.0%	100.0%	1	100.0%	100.0%	0		
Blue Earth	6	50.0%	50.0%	11	54.5%	45.5%	6	66.7%	100.0%
Brown	2	100.0%	50.0%	6	66.7%	83.3%	5	80.0%	80.0%
Carlton	5	60.0%	60.0%	4	50.0%	50.0%	7	85.7%	85.7%
Carver	5	40.0%	20.0%	12	66.7%	83.3%	5	80.0%	100.0%
Cass	12	66.7%	58.3%	8	50.0%	100.0%	6	33.3%	83.3%
Chippewa	4	100.0%	100.0%	2	100.0%	100.0%	4	100.0%	75.0%
Chisago	15	66.7%	73.3%	13	53.8%	92.3%	6	50.0%	83.3%
Clay	5	40.0%	20.0%	7	57.1%	71.4%	10	70.0%	50.0%
Clearwater	1	0.0%	100.0%	5	60.0%	0.0%	4	100.0%	100.0%
Cook	1	100.0%	0.0%	0			0		
Cottonwood	2	0.0%	50.0%	1	100.0%	100.0%	4	100.0%	100.0%
Crow Wing	12	50.0%	58.3%	13	61.5%	46.2%	12	66.7%	66.7%
Dakota	45	66.7%	77.8%	52	75.0%	76.9%	74	82.4%	79.7%
Dodge	0			1	100.0%	100.0%	1	100.0%	100.0%
Douglas	4	50.0%	100.0%	3	33.3%	33.3%	5	80.0%	100.0%
Faribault	3	66.7%	33.3%	2	50.0%	50.0%	2	0.0%	50.0%
Fillmore	3	100.0%	100.0%	4	25.0%	50.0%	7	85.7%	85.7%
Freeborn	8	62.5%	75.0%	6	66.7%	50.0%	5	100.0%	60.0%
Goodhue	7	71.4%	71.4%	7	85.7%	85.7%	8	37.5%	75.0%
Grant	4	75.0%	100.0%	3	33.3%	100.0%	1	100.0%	100.0%
Hennepin	226	51.8%	52.2%	216	52.3%	56.5%	182	51.6%	52.7%
Houston	4	50.0%	25.0%	3	66.7%	33.3%	4	75.0%	75.0%
Hubbard	2	0.0%	0.0%	2	50.0%	0.0%	1	100.0%	100.0%
Isanti	9	55.6%	88.9%	10	80.0%	80.0%	7	85.7%	85.7%
Itasca	9	33.3%	77.8%	13	69.2%	84.6%	7	100.0%	85.7%
Jackson	2	50.0%	50.0%	1	0.0%	100.0%	1	0.0%	0.0%
Kanabec	2	50.0%	50.0%	4	25.0%	75.0%	7	57.1%	57.1%
Kandiyohi	9	77.8%	77.8%	11	90.9%	90.9%	16	68.8%	93.8%
Kittson	0			0			0		
Koochiching	0			1	100.0%	100.0%	3	66.7%	33.3%
Lac qui Parle	1	100.0%	100.0%	1	0.0%	100.0%	0		
Lake	3	33.3%	33.3%	1	100.0%	100.0%	2	50.0%	50.0%
Lake of the Woods	0			1	100.0%	100.0%	0		
LeSueur	5	60.0%	60.0%	6	50.0%	66.7%	3	33.3%	100.0%
Lincoln	0			0			0		
Lyon	4	75.0%	75.0%	5	80.0%	80.0%	5	80.0%	80.0%
Mcleod	7	57.1%	71.4%	8	75.0%	87.5%	6	66.7%	66.7%
Mahnomen	3	66.7%	33.3%	3	33.3%	66.7%	1	100.0%	100.0%
Marshall	0			0			2	100.0%	100.0%
Martin	3	66.7%	66.7%	5	80.0%	100.0%	5	80.0%	60.0%
Meeker	10	100.0%	80.0%	3	0.0%	33.3%	7	57.1%	28.6%



Fifth and Twelfth Month Status of Monthly DWP Case Cohorts - October, November, December 2008

County	October 2008 DWP Eligible			November 2008 DWP Eligible			December 2008 DWP Eligible		
	Total Cases in Cohort	Percent Off MFIP Cash in 5th Month	Percent Off MFIP Cash in 12th Month	Total Cases in Cohort	Percent Off MFIP Cash in 5th Month	Percent Off MFIP Cash in 12th Month	Total Cases in Cohort	Percent Off MFIP Cash in 5th Month	Percent Off MFIP Cash in 12th Month
Mille Lacs	7	71.4%	85.7%	6	83.3%	100.0%	4	50.0%	100.0%
Morrison	4	0.0%	50.0%	6	83.3%	66.7%	8	87.5%	87.5%
Mower	4	25.0%	50.0%	9	55.6%	33.3%	9	55.6%	55.6%
Murray	0			0			1	100.0%	100.0%
Nicollet	4	50.0%	75.0%	6	50.0%	66.7%	6	50.0%	100.0%
Nobles	10	60.0%	80.0%	5	20.0%	40.0%	6	50.0%	66.7%
Norman	2	50.0%	50.0%	1	100.0%	100.0%	0		
Olmsted	27	59.3%	77.8%	32	75.0%	75.0%	28	60.7%	57.1%
Otter Tail	5	80.0%	80.0%	10	60.0%	90.0%	10	70.0%	80.0%
Pennington	0			2	50.0%	50.0%	4	50.0%	75.0%
Pine	11	27.3%	36.4%	9	66.7%	55.6%	10	60.0%	40.0%
Pipestone	1	100.0%	100.0%	2	50.0%	100.0%	1	100.0%	0.0%
Polk	15	53.3%	80.0%	3	100.0%	100.0%	6	83.3%	83.3%
Pope	0			1	100.0%	0.0%	1	100.0%	100.0%
Ramsey	119	37.0%	50.4%	132	40.9%	56.8%	128	43.8%	48.4%
Red Lake	1	100.0%	100.0%	1	0.0%	0.0%	2	100.0%	100.0%
Redwood	4	75.0%	75.0%	2	50.0%	50.0%	1	100.0%	100.0%
Renville	4	100.0%	50.0%	3	100.0%	33.3%	5	80.0%	100.0%
Rice	14	50.0%	57.1%	17	88.2%	76.5%	15	60.0%	53.3%
Rock	2	0.0%	50.0%	1	0.0%	100.0%	1	100.0%	0.0%
Roseau	0			0			1	100.0%	100.0%
St. Louis	34	64.7%	55.9%	42	61.9%	57.1%	43	55.8%	60.5%
Scott	15	66.7%	66.7%	16	75.0%	75.0%	21	81.0%	71.4%
Sherburne	15	80.0%	60.0%	9	77.8%	66.7%	21	71.4%	90.5%
Sibley	1	0.0%	100.0%	3	66.7%	100.0%	4	75.0%	50.0%
Stearns	30	60.0%	60.0%	16	62.5%	50.0%	27	59.3%	66.7%
Steele	2	50.0%	50.0%	6	100.0%	66.7%	4	25.0%	25.0%
Stevens	2	100.0%	50.0%	0			1	100.0%	0.0%
Swift	0			0			1	100.0%	100.0%
Todd	4	25.0%	50.0%	6	66.7%	66.7%	7	85.7%	100.0%
Traverse	3	66.7%	66.7%	0			0		
Wabasha	1	0.0%	0.0%	2	100.0%	100.0%	4	0.0%	25.0%
Wadena	1	0.0%	0.0%	3	100.0%	100.0%	6	66.7%	83.3%
Waseca	4	50.0%	75.0%	4	50.0%	50.0%	5	80.0%	100.0%
Washington	21	66.7%	71.4%	23	73.9%	60.9%	24	54.2%	37.5%
Watsonwan	1	100.0%	0.0%	2	0.0%	50.0%	0		
Wilkin	2	100.0%	100.0%	1	0.0%	100.0%	2	50.0%	100.0%
Winona	4	75.0%	100.0%	5	40.0%	40.0%	5	80.0%	80.0%
Wright	12	83.3%	83.3%	9	77.8%	66.7%	18	88.9%	94.4%
Yellow Medicine	0			1	100.0%	100.0%	2	100.0%	100.0%

Fifth and Twelfth Month Status of Monthly DWP Case Cohorts - January, February, March 2009

County	January 2009 DWP Eligible			February 2009 DWP Eligible			March 2009 DWP Eligible		
	Total Cases in Cohort	Percent Off MFIP Cash in 5th Month	Percent Off MFIP Cash in 12th Month	Total Cases in Cohort	Percent Off MFIP Cash in 5th Month	Percent Off MFIP Cash in 12th Month	Total Cases in Cohort	Percent Off MFIP Cash in 5th Month	Percent Off MFIP Cash in 12th Month
State	989	59.4%	69.0%	858	61.2%	65.5%	932	57.9%	64.7%
Aitkin	4	75.0%	100.0%	3	33.3%	33.3%	4	50.0%	50.0%
Anoka	76	68.4%	68.4%	70	67.1%	72.9%	83	74.7%	71.1%
Becker	4	50.0%	100.0%	4	75.0%	75.0%	9	55.6%	77.8%
Beltrami	15	66.7%	86.7%	14	50.0%	50.0%	22	54.5%	63.6%
Benton	5	60.0%	80.0%	7	71.4%	42.9%	4	50.0%	50.0%
Big Stone	0			0			1	100.0%	100.0%
Blue Earth	12	75.0%	66.7%	9	55.6%	66.7%	8	50.0%	100.0%
Brown	4	75.0%	75.0%	1	0.0%	0.0%	3	100.0%	66.7%
Carlton	4	50.0%	75.0%	8	87.5%	62.5%	5	40.0%	60.0%
Carver	9	77.8%	88.9%	9	55.6%	77.8%	8	75.0%	62.5%
Cass	15	60.0%	60.0%	8	50.0%	62.5%	7	71.4%	71.4%
Chippewa	1	100.0%	100.0%	2	50.0%	50.0%	3	66.7%	66.7%
Chisago	10	40.0%	70.0%	6	83.3%	100.0%	12	75.0%	75.0%
Clay	10	80.0%	80.0%	10	70.0%	50.0%	6	66.7%	66.7%
Clearwater	3	33.3%	66.7%	6	66.7%	83.3%	1	0.0%	100.0%
Cook	1	100.0%	100.0%	1	100.0%	100.0%	0		
Cottonwood	0			3	66.7%	33.3%	3	100.0%	66.7%
Crow Wing	14	85.7%	78.6%	17	82.4%	76.5%	15	66.7%	66.7%
Dakota	49	79.6%	85.7%	40	90.0%	80.0%	54	70.4%	72.2%
Dodge	4	75.0%	100.0%	4	50.0%	75.0%	2	50.0%	50.0%
Douglas	8	50.0%	87.5%	1	0.0%	100.0%	0		
Faribault	2	50.0%	50.0%	2	50.0%	100.0%	3	100.0%	100.0%
Fillmore	7	71.4%	85.7%	4	75.0%	50.0%	4	100.0%	100.0%
Freeborn	6	66.7%	50.0%	7	42.9%	71.4%	4	25.0%	50.0%
Goodhue	3	66.7%	100.0%	10	40.0%	40.0%	15	60.0%	80.0%
Grant	2	50.0%	50.0%	0			1	100.0%	100.0%
Hennepin	234	52.1%	54.7%	177	54.2%	62.1%	188	51.6%	60.6%
Houston	2	50.0%	50.0%	7	71.4%	85.7%	4	100.0%	75.0%
Hubbard	3	33.3%	66.7%	4	25.0%	25.0%	6	66.7%	83.3%
Isanti	16	37.5%	81.3%	10	70.0%	60.0%	5	40.0%	80.0%
Itasca	10	40.0%	80.0%	5	100.0%	100.0%	12	66.7%	75.0%
Jackson	0			1	100.0%	100.0%	1	100.0%	0.0%
Kanabec	6	100.0%	83.3%	4	100.0%	100.0%	7	71.4%	71.4%
Kandiyohi	15	66.7%	86.7%	9	66.7%	66.7%	9	66.7%	44.4%
Kittson	0			1	100.0%	100.0%	1	0.0%	100.0%
Koochiching	2	50.0%	100.0%	3	66.7%	100.0%	0		
Lac qui Parle	0			0			2	0.0%	50.0%
Lake	3	66.7%	66.7%	4	75.0%	75.0%	2	0.0%	0.0%
Lake of the Woods	0			0			1	0.0%	0.0%
LeSueur	4	100.0%	100.0%	5	80.0%	80.0%	1	100.0%	100.0%
Lincoln	1	100.0%	100.0%	0			0		
Lyon	5	80.0%	100.0%	2	100.0%	50.0%	3	33.3%	66.7%
Mcleod	10	60.0%	60.0%	7	42.9%	57.1%	6	50.0%	50.0%
Mahnomen	1	100.0%	0.0%	1	0.0%	0.0%	3	33.3%	66.7%
Marshall	1	0.0%	0.0%	0			1	100.0%	100.0%
Martin	3	33.3%	100.0%	3	66.7%	66.7%	2	50.0%	0.0%
Meeker	2	50.0%	50.0%	1	0.0%	0.0%	2	100.0%	50.0%

Fifth and Twelfth Month Status of Monthly DWP Case Cohorts - January, February, March 2009

County	January 2009 DWP Eligible			February 2009 DWP Eligible			March 2009 DWP Eligible		
	Total Cases in Cohort	Percent Off MFIP Cash in 5th Month	Percent Off MFIP Cash in 12th Month	Total Cases in Cohort	Percent Off MFIP Cash in 5th Month	Percent Off MFIP Cash in 12th Month	Total Cases in Cohort	Percent Off MFIP Cash in 5th Month	Percent Off MFIP Cash in 12th Month
Mille Lacs	10	50.0%	60.0%	4	75.0%	100.0%	3	100.0%	100.0%
Morrison	6	66.7%	66.7%	6	66.7%	83.3%	6	83.3%	100.0%
Mower	4	75.0%	75.0%	6	50.0%	83.3%	8	50.0%	62.5%
Murray	2	50.0%	100.0%	0			2	50.0%	50.0%
Nicollet	5	40.0%	100.0%	4	25.0%	100.0%	6	50.0%	66.7%
Nobles	7	57.1%	71.4%	4	50.0%	75.0%	7	71.4%	71.4%
Norman	3	33.3%	66.7%	0			0		
Olmsted	23	69.6%	78.3%	32	78.1%	78.1%	31	54.8%	67.7%
Otter Tail	11	72.7%	81.8%	5	60.0%	100.0%	14	42.9%	50.0%
Pennington	2	0.0%	50.0%	2	50.0%	100.0%	1	0.0%	0.0%
Pine	5	60.0%	80.0%	2	100.0%	100.0%	9	55.6%	55.6%
Pipestone	4	0.0%	75.0%	2	100.0%	100.0%	1	100.0%	100.0%
Polk	4	50.0%	25.0%	6	66.7%	50.0%	8	75.0%	75.0%
Pope	3	100.0%	66.7%	0			2	100.0%	50.0%
Ramsey	128	40.6%	57.8%	141	45.4%	50.4%	124	37.9%	50.8%
Red Lake	0			1	0.0%	0.0%	3	100.0%	100.0%
Redwood	3	100.0%	100.0%	0			2	50.0%	50.0%
Renville	6	66.7%	66.7%	1	100.0%	100.0%	1	0.0%	100.0%
Rice	5	60.0%	80.0%	6	100.0%	66.7%	7	71.4%	57.1%
Rock	3	33.3%	100.0%	1	0.0%	100.0%	0		
Roseau	3	66.7%	100.0%	2	50.0%	100.0%	1	100.0%	0.0%
St. Louis	43	72.1%	79.1%	28	57.1%	67.9%	42	45.2%	59.5%
Scott	22	68.2%	90.9%	12	91.7%	91.7%	25	72.0%	80.0%
Sherburne	19	68.4%	78.9%	18	77.8%	66.7%	12	75.0%	75.0%
Sibley	2	100.0%	50.0%	2	100.0%	100.0%	4	50.0%	75.0%
Stearns	22	59.1%	68.2%	22	54.5%	72.7%	21	57.1%	76.2%
Steele	7	28.6%	57.1%	4	75.0%	50.0%	5	40.0%	20.0%
Stevens	0			0			0		
Swift	1	0.0%	0.0%	0			0		
Todd	2	0.0%	50.0%	3	33.3%	33.3%	6	66.7%	66.7%
Traverse	1	100.0%	100.0%	0			0		
Wabasha	2	0.0%	50.0%	3	100.0%	100.0%	4	100.0%	100.0%
Wadena	1	100.0%	100.0%	2	0.0%	50.0%	4	75.0%	75.0%
Waseca	3	100.0%	66.7%	1	100.0%	100.0%	3	100.0%	66.7%
Washington	17	88.2%	82.4%	23	65.2%	73.9%	16	68.8%	68.8%
Watsonwan	3	100.0%	66.7%	3	33.3%	66.7%	4	50.0%	75.0%
Wilkin	0			0			2	100.0%	50.0%
Winona	6	50.0%	66.7%	4	100.0%	100.0%	3	66.7%	33.3%
Wright	14	71.4%	78.6%	17	58.8%	29.4%	12	50.0%	75.0%
Yellow Medicine	1	100.0%	100.0%	1	100.0%	100.0%	0		

Fifth and Twelfth Month Status of Monthly DWP Case Cohorts - April, May, and June 2009

County	April 2009 DWP Eligible			May 2009 DWP Eligible			June 2009 DWP Eligible		
	Total Cases in Cohort	Percent Off MFIP Cash in 5th Month	Percent Off MFIP Cash in 12th Month	Total Cases in Cohort	Percent Off MFIP Cash in 5th Month	Percent Off MFIP Cash in 12th Month	Total Cases in Cohort	Percent Off MFIP Cash in 5th Month	Percent Off MFIP Cash in 12th Month
State	970	60.3%	66.2%	902	56.7%	62.2%	1003	61.1%	66.6%
Aitkin	3	100.0%	100.0%	0			2	50.0%	50.0%
Anoka	82	62.2%	74.4%	64	68.8%	65.6%	82	69.5%	73.2%
Becker	1	100.0%	100.0%	4	75.0%	75.0%	6	66.7%	66.7%
Beltrami	8	75.0%	62.5%	19	42.1%	47.4%	19	78.9%	68.4%
Benton	6	83.3%	50.0%	4	50.0%	50.0%	11	36.4%	72.7%
Big Stone	0			0			0		
Blue Earth	10	50.0%	50.0%	7	71.4%	85.7%	7	71.4%	57.1%
Brown	3	66.7%	66.7%	3	100.0%	33.3%	4	75.0%	75.0%
Carlton	2	50.0%	100.0%	5	60.0%	80.0%	7	85.7%	85.7%
Carver	11	72.7%	81.8%	3	66.7%	33.3%	7	57.1%	42.9%
Cass	7	42.9%	57.1%	9	33.3%	33.3%	8	37.5%	37.5%
Chippewa	3	100.0%	100.0%	1	0.0%	100.0%	0		
Chisago	6	50.0%	50.0%	4	75.0%	100.0%	11	90.9%	81.8%
Clay	10	80.0%	70.0%	17	52.9%	58.8%	8	75.0%	87.5%
Clearwater	3	100.0%	100.0%	5	100.0%	80.0%	1	100.0%	0.0%
Cook	0			1	0.0%	100.0%	0		
Cottonwood	3	66.7%	100.0%	3	0.0%	100.0%	2	100.0%	100.0%
Crow Wing	14	100.0%	85.7%	12	66.7%	83.3%	15	86.7%	73.3%
Dakota	62	83.9%	79.0%	50	66.0%	70.0%	54	74.1%	70.4%
Dodge	0			2	100.0%	50.0%	5	40.0%	80.0%
Douglas	3	33.3%	100.0%	3	66.7%	66.7%	10	60.0%	60.0%
Faribault	3	33.3%	66.7%	1	100.0%	0.0%	1	100.0%	100.0%
Fillmore	1	0.0%	0.0%	4	50.0%	50.0%	4	100.0%	75.0%
Freeborn	6	16.7%	33.3%	7	42.9%	57.1%	10	70.0%	50.0%
Goodhue	5	80.0%	100.0%	9	55.6%	77.8%	10	40.0%	80.0%
Grant	5	80.0%	80.0%	1	100.0%	100.0%	2	100.0%	100.0%
Hennepin	215	47.9%	57.2%	219	46.6%	53.4%	216	53.7%	58.8%
Houston	7	71.4%	71.4%	1	100.0%	100.0%	2	50.0%	100.0%
Hubbard	4	75.0%	100.0%	6	83.3%	83.3%	1	100.0%	100.0%
Isanti	12	91.7%	75.0%	11	45.5%	54.5%	9	66.7%	88.9%
Itasca	11	81.8%	81.8%	8	100.0%	100.0%	10	60.0%	50.0%
Jackson	0			2	100.0%	100.0%	0		
Kanabec	2	100.0%	100.0%	4	50.0%	50.0%	3	66.7%	66.7%
Kandiyohi	8	87.5%	87.5%	15	53.3%	86.7%	14	71.4%	92.9%
Kittson	0			0			1	0.0%	0.0%
Koochiching	2	0.0%	0.0%	3	66.7%	33.3%	0		
Lac qui Parle	1	100.0%	100.0%	0			1	100.0%	100.0%
Lake	0			1	100.0%	100.0%	0		
Lake of the Woods	2	100.0%	100.0%	0			1	100.0%	100.0%
LeSueur	2	50.0%	100.0%	5	100.0%	80.0%	4	75.0%	100.0%
Lincoln	0			0			0		
Lyon	3	66.7%	66.7%	6	33.3%	66.7%	3	100.0%	100.0%
Mcleod	8	62.5%	75.0%	4	75.0%	75.0%	9	77.8%	100.0%
Mahnomen	4	50.0%	75.0%	4	100.0%	50.0%	3	33.3%	100.0%
Marshall	1	100.0%	100.0%	1	100.0%	100.0%	0		
Martin	7	71.4%	85.7%	4	75.0%	100.0%	6	83.3%	100.0%
Meeker	5	40.0%	80.0%	6	50.0%	83.3%	9	55.6%	77.8%

Fifth and Twelfth Month Status of Monthly DWP Case Cohorts - April, May, and June 2009

County	April 2009 DWP Eligible			May 2009 DWP Eligible			June 2009 DWP Eligible		
	Total Cases in Cohort	Percent Off MFIP Cash in 5th Month	Percent Off MFIP Cash in 12th Month	Total Cases in Cohort	Percent Off MFIP Cash in 5th Month	Percent Off MFIP Cash in 12th Month	Total Cases in Cohort	Percent Off MFIP Cash in 5th Month	Percent Off MFIP Cash in 12th Month
Mille Lacs	5	80.0%	80.0%	1	100.0%	100.0%	6	66.7%	66.7%
Morrison	2	50.0%	50.0%	5	80.0%	40.0%	8	100.0%	87.5%
Mower	9	77.8%	77.8%	9	66.7%	55.6%	10	70.0%	80.0%
Murray	2	100.0%	50.0%	0			0		
Nicollet	15	53.3%	60.0%	5	40.0%	80.0%	7	57.1%	71.4%
Nobles	9	44.4%	77.8%	6	83.3%	83.3%	7	71.4%	100.0%
Norman	0			1	100.0%	100.0%	2	100.0%	50.0%
Olmsted	30	46.7%	66.7%	32	56.3%	56.3%	45	64.4%	80.0%
Otter Tail	7	57.1%	42.9%	13	69.2%	76.9%	10	60.0%	50.0%
Pennington	2	50.0%	50.0%	3	66.7%	100.0%	1	100.0%	100.0%
Pine	11	72.7%	63.6%	14	50.0%	71.4%	7	42.9%	85.7%
Pipestone	5	60.0%	40.0%	2	100.0%	100.0%	4	50.0%	50.0%
Polk	9	88.9%	77.8%	5	80.0%	100.0%	10	80.0%	70.0%
Pope	0			0			0		
Ramsey	126	42.9%	53.2%	113	42.5%	52.2%	126	38.1%	52.4%
Red Lake	1	100.0%	100.0%	1	100.0%	100.0%	2	100.0%	100.0%
Redwood	1	0.0%	0.0%	3	66.7%	33.3%	1	100.0%	100.0%
Renville	3	100.0%	100.0%	7	85.7%	85.7%	9	77.8%	77.8%
Rice	16	50.0%	68.8%	8	62.5%	62.5%	11	72.7%	54.5%
Rock	0			1	0.0%	100.0%	2	50.0%	50.0%
Roseau	1	100.0%	0.0%	1	0.0%	0.0%	3	66.7%	33.3%
St. Louis	54	63.0%	66.7%	19	52.6%	47.4%	36	47.2%	58.3%
Scott	17	70.6%	76.5%	16	81.3%	87.5%	18	72.2%	61.1%
Sherburne	6	50.0%	50.0%	13	61.5%	61.5%	11	72.7%	81.8%
Sibley	1	100.0%	100.0%	2	100.0%	100.0%	5	60.0%	100.0%
Stearns	24	58.3%	58.3%	28	67.9%	67.9%	15	73.3%	73.3%
Steele	2	100.0%	50.0%	1	0.0%	100.0%	4	100.0%	100.0%
Stevens	0			0			0		
Swift	2	0.0%	50.0%	2	0.0%	0.0%	2	0.0%	100.0%
Todd	2	50.0%	100.0%	4	25.0%	50.0%	5	40.0%	40.0%
Traverse	2	100.0%	100.0%	1	100.0%	100.0%	2	100.0%	50.0%
Wabasha	0			2	0.0%	50.0%	0		
Wadena	3	66.7%	33.3%	2	0.0%	0.0%	5	40.0%	60.0%
Waseca	1	0.0%	100.0%	3	33.3%	33.3%	4	50.0%	100.0%
Washington	27	74.1%	66.7%	24	70.8%	62.5%	18	66.7%	55.6%
Watsonwan	1	0.0%	100.0%	1	100.0%	100.0%	2	100.0%	100.0%
Wilkin	1	100.0%	100.0%	1	0.0%	100.0%	5	100.0%	80.0%
Winona	8	87.5%	75.0%	4	25.0%	25.0%	3	66.7%	0.0%
Wright	14	92.9%	85.7%	11	90.9%	100.0%	16	75.0%	68.8%
Yellow Medicine	0			0			3	0.0%	66.7%

Fifth and Twelfth Month Status of Monthly DWP Case Cohorts - July, August, and September 2009

County	July 2009 DWP Eligible			August 2009 DWP Eligible			September 2009 DWP Eligible		
	Total Cases in Cohort	Percent Off MFIP Cash in 5th Month	Percent Off MFIP Cash in 2th Month	Total Cases in Cohort	Percent Off MFIP Cash in 5th Month	Percent Off MFIP Cash in 2th Month	Total Cases in Cohort	Percent Off MFIP Cash in 5th Month	Percent Off MFIP Cash in 2th Month
State	1081	61.5%	65.6%	1021	60.8%	66.3%	1030	56.6%	63.9%
Aitkin	3	100.0%	66.7%	7	28.6%	14.3%	3	66.7%	66.7%
Anoka	81	72.8%	70.4%	80	70.0%	67.5%	92	68.5%	70.7%
Becker	9	66.7%	77.8%	7	85.7%	57.1%	6	50.0%	33.3%
Beltrami	15	66.7%	66.7%	14	50.0%	85.7%	12	75.0%	66.7%
Benton	8	75.0%	62.5%	7	85.7%	42.9%	14	78.6%	85.7%
Big Stone	1	100.0%	100.0%	0			0		
Blue Earth	17	47.1%	52.9%	3	66.7%	66.7%	11	45.5%	45.5%
Brown	3	100.0%	66.7%	3	33.3%	66.7%	3	33.3%	33.3%
Carlton	6	50.0%	83.3%	6	83.3%	66.7%	3	66.7%	66.7%
Carver	5	60.0%	60.0%	11	90.9%	81.8%	8	87.5%	75.0%
Cass	8	12.5%	62.5%	6	66.7%	66.7%	7	42.9%	57.1%
Chippewa	5	40.0%	40.0%	0			1	100.0%	100.0%
Chisago	13	69.2%	84.6%	7	57.1%	71.4%	6	50.0%	100.0%
Clay	12	75.0%	75.0%	9	88.9%	77.8%	13	92.3%	84.6%
Clearwater	0			2	100.0%	50.0%	1	0.0%	100.0%
Cook	1	100.0%	100.0%	2	100.0%	100.0%	1	0.0%	0.0%
Cottonwood	5	80.0%	100.0%	5	100.0%	60.0%	6	66.7%	33.3%
Crow Wing	10	80.0%	80.0%	13	53.8%	46.2%	6	66.7%	50.0%
Dakota	55	78.2%	72.7%	67	74.6%	82.1%	55	70.9%	78.2%
Dodge	6	66.7%	100.0%	3	0.0%	0.0%	2	50.0%	50.0%
Douglas	4	75.0%	50.0%	2	50.0%	50.0%	5	60.0%	60.0%
Faribault	2	100.0%	100.0%	2	50.0%	50.0%	0		
Fillmore	2	100.0%	100.0%	2	100.0%	50.0%	4	75.0%	75.0%
Freeborn	11	81.8%	81.8%	9	77.8%	66.7%	7	28.6%	42.9%
Goodhue	8	75.0%	87.5%	4	25.0%	50.0%	7	14.3%	85.7%
Grant	4	100.0%	100.0%	2	100.0%	50.0%	1	0.0%	0.0%
Hennepin	239	50.6%	55.2%	214	54.2%	62.6%	215	46.5%	53.0%
Houston	7	71.4%	71.4%	5	100.0%	100.0%	2	50.0%	100.0%
Hubbard	1	100.0%	100.0%	1	100.0%	0.0%	2	50.0%	50.0%
Isanti	8	62.5%	75.0%	11	72.7%	81.8%	8	37.5%	62.5%
Itasca	9	33.3%	55.6%	10	70.0%	80.0%	9	55.6%	88.9%
Jackson	0			3	33.3%	66.7%	2	0.0%	50.0%
Kanabec	5	80.0%	60.0%	1	0.0%	0.0%	4	25.0%	75.0%
Kandiyohi	8	75.0%	87.5%	5	40.0%	100.0%	8	50.0%	75.0%
Kittson	1	100.0%	100.0%	0			0		
Koochiching	3	66.7%	66.7%	0			4	50.0%	75.0%
Lac qui Parle	1	100.0%	100.0%	1	100.0%	100.0%	0		
Lake	1	100.0%	100.0%	4	50.0%	50.0%	1	100.0%	100.0%
Lake of the Woods	0			0			1	100.0%	100.0%
LeSueur	8	75.0%	87.5%	4	50.0%	50.0%	5	40.0%	80.0%
Lincoln	0			0			0		
Lyon	0			4	50.0%	50.0%	6	83.3%	100.0%
Mcleod	4	50.0%	50.0%	8	75.0%	100.0%	11	63.6%	81.8%
Mahnomen	3	66.7%	33.3%	4	50.0%	50.0%	4	50.0%	25.0%
Marshall	1	100.0%	0.0%	0			0		
Martin	6	66.7%	66.7%	5	100.0%	80.0%	4	75.0%	75.0%
Meeker	3	66.7%	100.0%	1	0.0%	0.0%	4	75.0%	75.0%

Fifth and Twelfth Month Status of Monthly DWP Case Cohorts - July, August, and September 2009

County	July 2009 DWP Eligible			August 2009 DWP Eligible			September 2009 DWP Eligible		
	Total Cases in Cohort	Percent Off MFIP Cash in 5th Month	Percent Off MFIP Cash in 2th Month	Total Cases in Cohort	Percent Off MFIP Cash in 5th Month	Percent Off MFIP Cash in 2th Month	Total Cases in Cohort	Percent Off MFIP Cash in 5th Month	Percent Off MFIP Cash in 2th Month
Mille Lacs	3	100.0%	66.7%	9	66.7%	66.7%	4	50.0%	75.0%
Morrison	14	50.0%	64.3%	8	75.0%	62.5%	1	100.0%	100.0%
Mower	12	50.0%	91.7%	12	50.0%	75.0%	13	61.5%	61.5%
Murray	0			0			1	0.0%	0.0%
Nicollet	5	60.0%	40.0%	4	0.0%	50.0%	8	50.0%	50.0%
Nobles	9	66.7%	66.7%	6	33.3%	83.3%	6	83.3%	83.3%
Norman	5	100.0%	100.0%	5	60.0%	60.0%	2	50.0%	0.0%
Olmsted	40	65.0%	60.0%	34	44.1%	67.6%	37	64.9%	83.8%
Otter Tail	16	75.0%	75.0%	12	75.0%	66.7%	8	62.5%	50.0%
Pennington	3	66.7%	66.7%	4	75.0%	75.0%	3	33.3%	0.0%
Pine	12	83.3%	91.7%	4	50.0%	75.0%	6	50.0%	83.3%
Pipestone	5	60.0%	80.0%	0			3	100.0%	33.3%
Polk	7	42.9%	57.1%	14	71.4%	78.6%	10	60.0%	70.0%
Pope	1	0.0%	0.0%	1	0.0%	0.0%	0		
Ramsey	146	43.2%	52.1%	147	46.3%	55.8%	155	42.6%	51.0%
Red Lake	1	100.0%	100.0%	1	0.0%	0.0%	2	50.0%	50.0%
Redwood	5	80.0%	40.0%	6	83.3%	83.3%	3	33.3%	100.0%
Renville	4	75.0%	75.0%	3	100.0%	100.0%	8	62.5%	75.0%
Rice	12	66.7%	50.0%	18	55.6%	66.7%	15	66.7%	86.7%
Rock	3	66.7%	66.7%	1	100.0%	100.0%	0		
Roseau	0			3	100.0%	100.0%	1	0.0%	0.0%
St. Louis	39	69.2%	74.4%	31	58.1%	67.7%	49	53.1%	61.2%
Scott	12	58.3%	83.3%	4	100.0%	100.0%	17	82.4%	82.4%
Sherburne	19	78.9%	73.7%	20	85.0%	75.0%	12	91.7%	75.0%
Sibley	5	100.0%	100.0%	1	100.0%	0.0%	1	100.0%	100.0%
Stearns	24	62.5%	70.8%	34	70.6%	67.6%	18	50.0%	55.6%
Steele	8	75.0%	100.0%	6	83.3%	100.0%	5	80.0%	60.0%
Stevens	2	50.0%	100.0%	1	100.0%	100.0%	1	100.0%	100.0%
Swift	3	100.0%	100.0%	1	100.0%	100.0%	4	100.0%	100.0%
Todd	3	33.3%	33.3%	7	71.4%	71.4%	6	83.3%	66.7%
Traverse	0			1	0.0%	0.0%	1	0.0%	100.0%
Wabasha	2	50.0%	50.0%	3	66.7%	100.0%	2	100.0%	50.0%
Wadena	1	0.0%	0.0%	4	50.0%	50.0%	7	42.9%	85.7%
Waseca	4	100.0%	100.0%	10	70.0%	60.0%	2	100.0%	100.0%
Washington	28	78.6%	71.4%	29	62.1%	69.0%	26	61.5%	73.1%
Watsonwan	3	66.7%	100.0%	3	66.7%	66.7%	2	100.0%	50.0%
Wilkin	1	0.0%	0.0%	3	66.7%	66.7%	1	0.0%	100.0%
Winona	6	50.0%	66.7%	9	22.2%	66.7%	7	57.1%	42.9%
Wright	16	62.5%	68.8%	6	100.0%	83.3%	16	68.8%	81.3%
Yellow Medicine	0			2	50.0%	50.0%	3	66.7%	100.0%

Fifth and Twelfth Month Status of Monthly DWP Case Cohorts - October, November, and December 2009

County	October 2009 DWP Eligible			November 2009 DWP Eligible			December 2009 DWP Eligible		
	Total Cases in Cohort	Percent Off MFIP Cash in 5th Month	Percent Off MFIP Cash in 2th Month	Total Cases in Cohort	Percent Off MFIP Cash in 5th Month	Percent Off MFIP Cash in 2th Month	Total Cases in Cohort	Percent Off MFIP Cash in 5th Month	Percent Off MFIP Cash in 2th Month
State	1015	54.8%	0.0%	926	62.7%	0.0%	904	60.4%	0.0%
Aitkin	2	0.0%	0.0%	2	50.0%	0.0%	0		
Anoka	73	64.4%	0.0%	62	66.1%	0.0%	70	60.0%	0.0%
Becker	4	75.0%	0.0%	14	92.9%	0.0%	9	77.8%	0.0%
Beltrami	9	33.3%	0.0%	8	75.0%	0.0%	12	58.3%	0.0%
Benton	3	100.0%	0.0%	9	100.0%	0.0%	9	77.8%	0.0%
Big Stone	1	0.0%	0.0%	1	100.0%	0.0%	3	66.7%	0.0%
Blue Earth	8	50.0%	0.0%	6	33.3%	0.0%	10	60.0%	0.0%
Brown	3	0.0%	0.0%	6	50.0%	0.0%	9	66.7%	0.0%
Carlton	5	60.0%	0.0%	13	69.2%	0.0%	6	83.3%	0.0%
Carver	10	40.0%	0.0%	6	50.0%	0.0%	6	50.0%	0.0%
Cass	10	40.0%	0.0%	8	75.0%	0.0%	6	83.3%	0.0%
Chippewa	3	66.7%	0.0%	0			0		
Chisago	7	57.1%	0.0%	6	66.7%	0.0%	4	75.0%	0.0%
Clay	19	63.2%	0.0%	10	90.0%	0.0%	9	55.6%	0.0%
Clearwater	2	100.0%	0.0%	4	50.0%	0.0%	0		
Cook	0			2	0.0%	0.0%	0		
Cottonwood	7	57.1%	0.0%	2	100.0%	0.0%	4	100.0%	0.0%
Crow Wing	10	70.0%	0.0%	15	73.3%	0.0%	14	85.7%	0.0%
Dakota	43	62.8%	0.0%	58	84.5%	0.0%	45	82.2%	0.0%
Dodge	7	71.4%	0.0%	2	100.0%	0.0%	4	0.0%	0.0%
Douglas	5	40.0%	0.0%	6	100.0%	0.0%	8	50.0%	0.0%
Faribault	1	0.0%	0.0%	4	75.0%	0.0%	5	60.0%	0.0%
Fillmore	5	60.0%	0.0%	2	100.0%	0.0%	3	66.7%	0.0%
Freeborn	9	66.7%	0.0%	3	66.7%	0.0%	5	60.0%	0.0%
Goodhue	8	62.5%	0.0%	9	77.8%	0.0%	6	83.3%	0.0%
Grant	1	0.0%	0.0%	1	100.0%	0.0%	0		
Hennepin	211	46.4%	0.0%	225	54.2%	0.0%	164	58.5%	0.0%
Houston	3	100.0%	0.0%	1	100.0%	0.0%	0		
Hubbard	5	80.0%	0.0%	3	100.0%	0.0%	3	33.3%	0.0%
Isanti	14	57.1%	0.0%	9	55.6%	0.0%	5	80.0%	0.0%
Itasca	8	62.5%	0.0%	12	66.7%	0.0%	13	46.2%	0.0%
Jackson	1	0.0%	0.0%	2	100.0%	0.0%	2	100.0%	0.0%
Kanabec	8	50.0%	0.0%	0			7	71.4%	0.0%
Kandiyohi	12	83.3%	0.0%	4	75.0%	0.0%	6	100.0%	0.0%
Kittson	1	100.0%	0.0%	0			0		
Koochiching	6	66.7%	0.0%	1	100.0%	0.0%	2	50.0%	0.0%
Lac qui Parle	0			0			1	100.0%	0.0%
Lake	2	50.0%	0.0%	2	100.0%	0.0%	1	100.0%	0.0%
Lake of the Woods	0			0			1	100.0%	0.0%
LeSueur	9	55.6%	0.0%	0			4	75.0%	0.0%
Lincoln	0			0			0		
Lyon	7	42.9%	0.0%	5	80.0%	0.0%	2	50.0%	0.0%
Mcleod	7	57.1%	0.0%	3	66.7%	0.0%	8	75.0%	0.0%
Mahnomen	3	100.0%	0.0%	2	100.0%	0.0%	3	66.7%	0.0%
Marshall	1	100.0%	0.0%	0			1	100.0%	0.0%
Martin	5	80.0%	0.0%	3	100.0%	0.0%	2	100.0%	0.0%
Meeker	5	40.0%	0.0%	6	66.7%	0.0%	3	100.0%	0.0%



Fifth and Twelfth Month Status of Monthly DWP Case Cohorts - October, November, and December 2009

County	October 2009 DWP Eligible			November 2009 DWP Eligible			December 2009 DWP Eligible		
	Total Cases in Cohort	Percent Off MFIP Cash in 5th Month	Percent Off MFIP Cash in 2th Month	Total Cases in Cohort	Percent Off MFIP Cash in 5th Month	Percent Off MFIP Cash in 2th Month	Total Cases in Cohort	Percent Off MFIP Cash in 5th Month	Percent Off MFIP Cash in 2th Month
Mille Lacs	8	37.5%	0.0%	5	80.0%	0.0%	5	40.0%	0.0%
Morrison	4	100.0%	0.0%	3	66.7%	0.0%	1	0.0%	0.0%
Mower	10	50.0%	0.0%	16	43.8%	0.0%	6	50.0%	0.0%
Murray	2	50.0%	0.0%	0			0		
Nicollet	5	80.0%	0.0%	5	80.0%	0.0%	7	42.9%	0.0%
Nobles	7	85.7%	0.0%	4	100.0%	0.0%	7	57.1%	0.0%
Norman	4	25.0%	0.0%	4	50.0%	0.0%	2	50.0%	0.0%
Olmsted	40	67.5%	0.0%	28	78.6%	0.0%	26	57.7%	0.0%
Otter Tail	16	68.8%	0.0%	10	70.0%	0.0%	12	58.3%	0.0%
Pennington	4	75.0%	0.0%	2	100.0%	0.0%	2	100.0%	0.0%
Pine	12	50.0%	0.0%	17	70.6%	0.0%	13	69.2%	0.0%
Pipestone	1	0.0%	0.0%	5	80.0%	0.0%	3	66.7%	0.0%
Polk	9	44.4%	0.0%	4	25.0%	0.0%	13	53.8%	0.0%
Pope	2	100.0%	0.0%	2	50.0%	0.0%	0		
Ramsey	147	38.8%	0.0%	109	35.8%	0.0%	147	42.2%	0.0%
Red Lake	3	100.0%	0.0%	2	100.0%	0.0%	1	0.0%	0.0%
Redwood	1	100.0%	0.0%	2	50.0%	0.0%	2	50.0%	0.0%
Renville	0			5	100.0%	0.0%	8	75.0%	0.0%
Rice	15	33.3%	0.0%	11	36.4%	0.0%	14	42.9%	0.0%
Rock	1	100.0%	0.0%	1	0.0%	0.0%	0		
Roseau	2	50.0%	0.0%	1	100.0%	0.0%	0		
St. Louis	41	56.1%	0.0%	29	65.5%	0.0%	25	48.0%	0.0%
Scott	15	80.0%	0.0%	19	68.4%	0.0%	14	85.7%	0.0%
Sherburne	15	66.7%	0.0%	9	77.8%	0.0%	15	60.0%	0.0%
Sibley	3	33.3%	0.0%	2	100.0%	0.0%	3	66.7%	0.0%
Stearns	26	46.2%	0.0%	17	58.8%	0.0%	35	57.1%	0.0%
Steele	3	33.3%	0.0%	4	75.0%	0.0%	9	77.8%	0.0%
Stevens	0			2	100.0%	0.0%	0		
Swift	0			1	100.0%	0.0%	0		
Todd	4	0.0%	0.0%	4	100.0%	0.0%	4	75.0%	0.0%
Traverse	0			1	100.0%	0.0%	0		
Wabasha	2	0.0%	0.0%	3	0.0%	0.0%	3	33.3%	0.0%
Wadena	6	100.0%	0.0%	3	33.3%	0.0%	5	60.0%	0.0%
Waseca	0			1	0.0%	0.0%	1	0.0%	0.0%
Washington	29	86.2%	0.0%	31	54.8%	0.0%	28	92.9%	0.0%
Watsonwan	2	50.0%	0.0%	6	66.7%	0.0%	2	100.0%	0.0%
Wilkin	0			1	0.0%	0.0%	1	100.0%	0.0%
Winona	3	100.0%	0.0%	4	75.0%	0.0%	4	50.0%	0.0%
Wright	10	70.0%	0.0%	15	86.7%	0.0%	10	60.0%	0.0%
Yellow Medicine	0			1	100.0%	0.0%	1	0.0%	0.0%

Fifth and Twelfth Month Status of Monthly DWP Case Cohorts - January, February, and March 2010

County	January 2010 DWP Eligible			February 2010 DWP Eligible			March 2010 DWP Eligible		
	Total Cases in Cohort	Percent Off MFIP Cash in 5th Month	Percent Off MFIP Cash in 2th Month	Total Cases in Cohort	Percent Off MFIP Cash in 5th Month	Percent Off MFIP Cash in 2th Month	Total Cases in Cohort	Percent Off MFIP Cash in 5th Month	Percent Off MFIP Cash in 2th Month
State	847	58.6%	0.0%	682	57.8%	0.0%	771	59.9%	0.0%
Aitkin	2	0.0%	0.0%	2	50.0%	0.0%	1	100.0%	0.0%
Anoka	68	69.1%	0.0%	57	73.7%	0.0%	45	73.3%	0.0%
Becker	13	53.8%	0.0%	3	66.7%	0.0%	2	100.0%	0.0%
Beltrami	11	72.7%	0.0%	11	72.7%	0.0%	17	82.4%	0.0%
Benton	8	50.0%	0.0%	7	42.9%	0.0%	7	71.4%	0.0%
Big Stone	1	100.0%	0.0%	0			1	100.0%	0.0%
Blue Earth	10	50.0%	0.0%	7	57.1%	0.0%	9	55.6%	0.0%
Brown	4	75.0%	0.0%	1	0.0%	0.0%	0		
Carlton	5	60.0%	0.0%	10	60.0%	0.0%	4	50.0%	0.0%
Carver	2	50.0%	0.0%	4	75.0%	0.0%	8	75.0%	0.0%
Cass	4	75.0%	0.0%	9	55.6%	0.0%	9	55.6%	0.0%
Chippewa	4	25.0%	0.0%	1	100.0%	0.0%	1	0.0%	0.0%
Chisago	5	80.0%	0.0%	9	88.9%	0.0%	7	100.0%	0.0%
Clay	10	70.0%	0.0%	14	71.4%	0.0%	9	77.8%	0.0%
Clearwater	0			2	100.0%	0.0%	1	0.0%	0.0%
Cook	0			0			1	100.0%	0.0%
Cottonwood	2	0.0%	0.0%	0			3	66.7%	0.0%
Crow Wing	18	61.1%	0.0%	7	71.4%	0.0%	10	90.0%	0.0%
Dakota	43	74.4%	0.0%	29	75.9%	0.0%	44	70.5%	0.0%
Dodge	7	42.9%	0.0%	1	100.0%	0.0%	2	100.0%	0.0%
Douglas	4	25.0%	0.0%	6	83.3%	0.0%	3	66.7%	0.0%
Faribault	2	100.0%	0.0%	2	50.0%	0.0%	4	75.0%	0.0%
Fillmore	4	50.0%	0.0%	1	0.0%	0.0%	2	0.0%	0.0%
Freeborn	9	44.4%	0.0%	2	50.0%	0.0%	8	100.0%	0.0%
Goodhue	8	50.0%	0.0%	9	55.6%	0.0%	4	50.0%	0.0%
Grant	4	50.0%	0.0%	2	100.0%	0.0%	0		
Hennepin	190	57.9%	0.0%	139	48.2%	0.0%	173	53.8%	0.0%
Houston	3	100.0%	0.0%	3	66.7%	0.0%	5	40.0%	0.0%
Hubbard	3	33.3%	0.0%	1	100.0%	0.0%	3	33.3%	0.0%
Isanti	6	50.0%	0.0%	13	76.9%	0.0%	7	42.9%	0.0%
Itasca	13	76.9%	0.0%	3	0.0%	0.0%	5	60.0%	0.0%
Jackson	1	0.0%	0.0%	0			1	0.0%	0.0%
Kanabec	5	80.0%	0.0%	3	33.3%	0.0%	2	100.0%	0.0%
Kandiyohi	7	71.4%	0.0%	4	100.0%	0.0%	8	50.0%	0.0%
Kittson	0			0			0		
Koochiching	5	40.0%	0.0%	1	100.0%	0.0%	2	100.0%	0.0%
Lac qui Parle	0			0			0		
Lake	0			1	100.0%	0.0%	1	0.0%	0.0%
Lake of the Woods	0			0			0		
LeSueur	2	100.0%	0.0%	2	0.0%	0.0%	5	40.0%	0.0%
Lincoln	0			0			0		
Lyon	4	25.0%	0.0%	3	66.7%	0.0%	4	75.0%	0.0%
Mcleod	7	85.7%	0.0%	2	50.0%	0.0%	8	87.5%	0.0%
Mahnomen	3	100.0%	0.0%	4	25.0%	0.0%	1	0.0%	0.0%
Marshall	1	100.0%	0.0%	1	100.0%	0.0%	1	100.0%	0.0%
Martin	2	100.0%	0.0%	1	100.0%	0.0%	5	80.0%	0.0%
Meeker	2	100.0%	0.0%	2	50.0%	0.0%	1	0.0%	0.0%

Fifth and Twelfth Month Status of Monthly DWP Case Cohorts - January, February, and March 2010

County	January 2010 DWP Eligible			February 2010 DWP Eligible			March 2010 DWP Eligible		
	Total Cases in Cohort	Percent Off MFIP Cash in 5th Month	Percent Off MFIP Cash in 2th Month	Total Cases in Cohort	Percent Off MFIP Cash in 5th Month	Percent Off MFIP Cash in 2th Month	Total Cases in Cohort	Percent Off MFIP Cash in 5th Month	Percent Off MFIP Cash in 2th Month
Mille Lacs	5	80.0%	0.0%	4	50.0%	0.0%	7	57.1%	0.0%
Morrison	1	100.0%	0.0%	0			2	100.0%	0.0%
Mower	8	50.0%	0.0%	5	80.0%	0.0%	4	75.0%	0.0%
Murray	1	0.0%	0.0%	0			1	100.0%	0.0%
Nicollet	8	62.5%	0.0%	6	100.0%	0.0%	4	75.0%	0.0%
Nobles	6	66.7%	0.0%	5	80.0%	0.0%	4	100.0%	0.0%
Norman	3	66.7%	0.0%	1	100.0%	0.0%	1	100.0%	0.0%
Olmsted	25	36.0%	0.0%	22	45.5%	0.0%	31	67.7%	0.0%
Otter Tail	11	81.8%	0.0%	6	33.3%	0.0%	7	57.1%	0.0%
Pennington	4	50.0%	0.0%	2	100.0%	0.0%	4	50.0%	0.0%
Pine	8	50.0%	0.0%	7	42.9%	0.0%	4	75.0%	0.0%
Pipestone	1	100.0%	0.0%	2	50.0%	0.0%	0		
Polk	8	75.0%	0.0%	5	60.0%	0.0%	6	50.0%	0.0%
Pope	0			0			1	0.0%	0.0%
Ramsey	97	29.9%	0.0%	111	40.5%	0.0%	144	37.5%	0.0%
Red Lake	3	66.7%	0.0%	1	100.0%	0.0%	0		
Redwood	6	66.7%	0.0%	3	66.7%	0.0%	3	100.0%	0.0%
Renville	2	50.0%	0.0%	2	100.0%	0.0%	3	100.0%	0.0%
Rice	9	44.4%	0.0%	5	40.0%	0.0%	7	28.6%	0.0%
Rock	4	50.0%	0.0%	0			0		
Roseau	0			2	100.0%	0.0%	0		
St. Louis	21	52.4%	0.0%	24	54.2%	0.0%	23	69.6%	0.0%
Scott	16	75.0%	0.0%	12	83.3%	0.0%	10	90.0%	0.0%
Sherburne	7	85.7%	0.0%	12	75.0%	0.0%	12	66.7%	0.0%
Sibley	1	100.0%	0.0%	4	75.0%	0.0%	3	100.0%	0.0%
Stearns	21	57.1%	0.0%	19	36.8%	0.0%	16	62.5%	0.0%
Steele	7	85.7%	0.0%	2	50.0%	0.0%	1	100.0%	0.0%
Stevens	0			0			0		
Swift	4	100.0%	0.0%	1	100.0%	0.0%	2	50.0%	0.0%
Todd	1	100.0%	0.0%	0			1	100.0%	0.0%
Traverse	2	100.0%	0.0%	1	100.0%	0.0%	0		
Wabasha	2	50.0%	0.0%	1	100.0%	0.0%	1	100.0%	0.0%
Wadena	3	100.0%	0.0%	2	50.0%	0.0%	3	66.7%	0.0%
Waseca	3	100.0%	0.0%	1	100.0%	0.0%	2	50.0%	0.0%
Washington	26	57.7%	0.0%	15	46.7%	0.0%	19	73.7%	0.0%
Watsonwan	3	100.0%	0.0%	4	50.0%	0.0%	0		
Wilkin	1	100.0%	0.0%	1	100.0%	0.0%	0		
Winona	8	50.0%	0.0%	2	50.0%	0.0%	4	75.0%	0.0%
Wright	8	87.5%	0.0%	13	92.3%	0.0%	6	50.0%	0.0%
Yellow Medicine	1	100.0%	0.0%	0			1	100.0%	0.0%

Fifth and Twelfth Month Status of Monthly DWP Case Cohorts - April, May, and June 2010

County	April 2010 DWP Eligible			May 2010 DWP Eligible			June 2010 DWP Eligible		
	Total Cases in Cohort	Percent Off MFIP Cash in 5th Month	Percent Off MFIP Cash in 2th Month	Total Cases in Cohort	Percent Off MFIP Cash in 5th Month	Percent Off MFIP Cash in 2th Month	Total Cases in Cohort	Percent Off MFIP Cash in 5th Month	Percent Off MFIP Cash in 2th Month
State	792	55.8%	0.0%	0			0		
Aitkin	5	40.0%	0.0%	0			0		
Anoka	44	59.1%	0.0%	0			0		
Becker	2	100.0%	0.0%	0			0		
Beltrami	3	66.7%	0.0%	0			0		
Benton	0			0			0		
Big Stone	0			0			0		
Blue Earth	13	61.5%	0.0%	0			0		
Brown	3	33.3%	0.0%	0			0		
Carlton	8	75.0%	0.0%	0			0		
Carver	10	80.0%	0.0%	0			0		
Cass	4	50.0%	0.0%	0			0		
Chippewa	2	100.0%	0.0%	0			0		
Chisago	5	80.0%	0.0%	0			0		
Clay	13	46.2%	0.0%	0			0		
Clearwater	5	60.0%	0.0%	0			0		
Cook	1	0.0%	0.0%	0			0		
Cottonwood	3	100.0%	0.0%	0			0		
Crow Wing	13	69.2%	0.0%	0			0		
Dakota	46	69.6%	0.0%	0			0		
Dodge	2	100.0%	0.0%	0			0		
Douglas	9	55.6%	0.0%	0			0		
Faribault	1	0.0%	0.0%	0			0		
Fillmore	2	50.0%	0.0%	0			0		
Freeborn	3	66.7%	0.0%	0			0		
Goodhue	7	28.6%	0.0%	0			0		
Grant	2	50.0%	0.0%	0			0		
Hennepin	182	47.3%	0.0%	0			0		
Houston	0			0			0		
Hubbard	4	75.0%	0.0%	0			0		
Isanti	8	75.0%	0.0%	0			0		
Itasca	5	40.0%	0.0%	0			0		
Jackson	0			0			0		
Kanabec	2	50.0%	0.0%	0			0		
Kandiyohi	15	80.0%	0.0%	0			0		
Kittson	0			0			0		
Koochiching	1	0.0%	0.0%	0			0		
Lac qui Parle	0			0			0		
Lake	0			0			0		
Lake of the Woods	0			0			0		
LeSueur	9	88.9%	0.0%	0			0		
Lincoln	0			0			0		
Lyon	2	0.0%	0.0%	0			0		
Mcleod	7	71.4%	0.0%	0			0		
Mahnomen	0			0			0		
Marshall	1	100.0%	0.0%	0			0		
Martin	1	100.0%	0.0%	0			0		
Meeker	2	50.0%	0.0%	0			0		

Fifth and Twelfth Month Status of Monthly DWP Case Cohorts - April, May, and June 2010

County	April 2010 DWP Eligible			May 2010 DWP Eligible			June 2010 DWP Eligible		
	Total Cases in Cohort	Percent Off MFIP Cash in 5th Month	Percent Off MFIP Cash in 2th Month	Total Cases in Cohort	Percent Off MFIP Cash in 5th Month	Percent Off MFIP Cash in 2th Month	Total Cases in Cohort	Percent Off MFIP Cash in 5th Month	Percent Off MFIP Cash in 2th Month
Mille Lacs	2	100.0%	0.0%	0			0		
Morrison	3	66.7%	0.0%	0			0		
Mower	9	77.8%	0.0%	0			0		
Murray	1	100.0%	0.0%	0			0		
Nicollet	8	62.5%	0.0%	0			0		
Nobles	4	100.0%	0.0%	0			0		
Norman	1	100.0%	0.0%	0			0		
Olmsted	21	66.7%	0.0%	0			0		
Otter Tail	7	71.4%	0.0%	0			0		
Pennington	2	100.0%	0.0%	0			0		
Pine	11	81.8%	0.0%	0			0		
Pipestone	2	0.0%	0.0%	0			0		
Polk	11	36.4%	0.0%	0			0		
Pope	1	100.0%	0.0%	0			0		
Ramsey	142	41.5%	0.0%	0			0		
Red Lake	0			0			0		
Redwood	1	100.0%	0.0%	0			0		
Renville	6	33.3%	0.0%	0			0		
Rice	6	50.0%	0.0%	0			0		
Rock	4	75.0%	0.0%	0			0		
Roseau	1	0.0%	0.0%	0			0		
St. Louis	17	58.8%	0.0%	0			0		
Scott	8	62.5%	0.0%	0			0		
Sherburne	19	73.7%	0.0%	0			0		
Sibley	4	75.0%	0.0%	0			0		
Stearns	13	61.5%	0.0%	0			0		
Steele	4	50.0%	0.0%	0			0		
Stevens	3	33.3%	0.0%	0			0		
Swift	1	0.0%	0.0%	0			0		
Todd	3	33.3%	0.0%	0			0		
Traverse	0			0			0		
Wabasha	1	0.0%	0.0%	0			0		
Wadena	2	50.0%	0.0%	0			0		
Waseca	2	0.0%	0.0%	0			0		
Washington	16	62.5%	0.0%	0			0		
Watsonwan	2	100.0%	0.0%	0			0		
Wilkin	1	100.0%	0.0%	0			0		
Winona	3	0.0%	0.0%	0			0		
Wright	5	80.0%	0.0%	0			0		
Yellow Medicine	0			0			0		