

# ANNUAL REPORT

2011-2012



# 2011–2012 MSHSL Board of Directors



**Mindy Sparby**  
Belle Plaine  
President



**Mark Fredericksen**  
Waconia  
Vice President



**Luanne Wagner**  
St. Francis  
Treasurer



**Perry Aadland**  
Chicago Lakes Area



**Kim Algoo**  
Shakopee



**Rick Bleichner**  
Breckenridge



**Steve Eklund**  
Braham



**Laurie Esau**  
Orono



**John Hamann**  
Underwood



**Walter Hautala**  
Mesabi East



**Mike Kolness**  
Ada-Borup



**Chris Laird**  
Heritage Christian Academy



**Jill Lofald**  
Duluth Denfeld



**Mike Manning**  
Rosemount



**Scott McCready**  
St. Charles



**Roz Peterson**  
Lakeville



**Lane Powell**  
Fillmore Central



**Mike Rusinko**  
Eden Prairie



**Mark Solberg**  
Cambridge-Isanti



**John Soma**  
Edina

## 2011–2012 Representative Assembly Delegates

*The rulesmaking body of the Minnesota State High School League*

### CLASS A REGIONS

#### Region 1A

1. Dan Hurley, Activities Director, Chatfield
2. Jeff Sampson, Principal/Activities Director, Medford
3. Corey Wagner, Athletic Director, Hayfield

#### Region 2A

4. Jim Amsden, Principal, Sibley East, Arlington
5. Jeff Boran, Athletic Director, Waterville-Elysian-Morristown
6. Rob Norman, Activities/Athletic Director, Blue Earth Area

#### Region 3A

7. Mike Knutson, Athletic Director, Benson
8. Bill Tauer, Athletic Director, Tracy-Milroy-Balaton
9. Todd Oye, Athletic Director, Luverne

#### Region 4A

10. TBD
11. Jeff Wall, Athletic Director, Maranatha Christian Academy, Brooklyn Park
12. Mike Brown, Asst. Administrator, St. Paul Academy and Summit School

#### Region 5A

13. John Vraa, Athletic Director, New London-Spicer
14. Jerry Westphal, Athletic Director, Milaca
15. Michael Johnson, Athletic Director, Foley

#### Region 6A

16. Paul Weinzierl, Principal, Long Prairie-Grey Eagle
17. Scott Monson, Superintendent, Morris Area
18. Tony Thiel, Athletic Director, Wheaton

#### Region 7A

19. Kathy Fredricksen, Athletic Director, Moose Lake
20. James Lah, Fine Arts, Ely
21. Chad Stoskopf, Athletic Director, Esko

#### Region 8A

22. Teresa Rabe, Athletic Director, Blackduck
23. Dave Pace, Superintendent, East Grand Forks
24. Joe McArthur, School Board Member, Waubun School District, Ogema

### CLASS AA REGIONS

#### Region 1AA

25. Jeff Whitney, Athletic Director, Rochester Mayo
26. Tom Graupmann, Athletic Director, Northfield
27. Paul Cox, Athletic Director, Rochester John Marshall

#### Region 2AA

28. Bruce Remme, Activities Director, Marshall
29. Keith Randklev, Principal, Mound-Westonka
30. Dick Ungar, Activities Director, Chanhassen

#### Region 3AA

31. Brian Fell, Activities Director, Bloomington Jefferson
32. Matt Percival, Athletics Director, Eastview, Apple Valley
33. Pete Buesgens, Athletic Director, Apple Valley

#### Region 4AA

34. Trent Hanson, Athletic Director, East Ridge, Woodbury
35. John Brodrick, School Board Member, St. Paul Schools
36. Rich Keller, Teacher/Coach, Stillwater

#### Region 5AA

37. Paul Gustafson, Activities Director, Rogers
38. Ron Broberg, Athletic Director, Irondale, New Brighton
39. Neil Fletcher, Athletic Director, Blaine

#### Region 6AA

40. Darren Ginther, Athletic Director, Minneapolis Edison
41. Andy Ewald, Athletic Director, St. Louis Park
42. Dave Wicker, Asst. Director of Athletics, Minneapolis Public Schools

#### Region 7AA

43. Beth Clark, Activities Director, Hermantown
44. Tom Lenarz, Activities Director/Coach, Cloquet
45. Joe Silko, Superintendent, Grand Rapids

#### Region 8AA

46. Lisa Johnson, Athletic Director, Monticello
47. Chris McElroy, Activities Director, St. Cloud Apollo
48. Tom Heck, Athletic Director, Becker

## MSHSL Administrative Staff

Executive Director ..... David Stead  
 Executive Assistant ..... Lynne Johnson  
 Associate Director ..... Lisa Lissimore  
 Administrative Assistant ..... Sheila Robinson  
 Associate Director ..... Kevin Merkle  
 Administrative Assistant ..... Amanda Johnson  
 Officials' Coordinator ..... Katie Vanderpoel  
 Associate Director ..... Jody Redman  
 Administrative Assistant ..... Amie Symens

Associate Director ..... Craig Perry  
 Administrative Assistant ..... Susi Hollenbeck  
 Assistant Director ..... Richard Matter  
 Accounting Assistant ..... Sharon Bahma  
 Ticket Assistant ..... Nancy Myers  
 Assistant Director ..... Chris Franson  
 Web Site Coordinator ..... Nancy Etter  
 Technology Assistant ..... Tracie Bressler

Director of Information ..... Howard Voigt  
 Assistant Information Director ..... Ellen Rajkowski  
 Media Credentialing Assistant ..... Yvonne Walsh  
 Media Specialist ..... John Millea  
 Program Specialist ..... Amy Doherty  
 Office Manager ..... Kristi Vesall  
 Administrative Assistant ..... Yvonne Walsh  
 Receptionist ..... Ann Bailey

# PRESIDENT'S REPORT

I have had the pleasure to serve as the president of the MSHSL Board of Directors during the 2011-2012 school year. As the economic conditions throughout Minnesota have presented challenges for school boards and school communities, the MSHSL Board of Directors focused on policy decisions that would provide financial relief for member schools in as many ways as possible.

Tournament related proposals and bylaw changes were addressed by the Board of Directors and the Continuing Education Requirements for head coaches were reviewed and modified. New modules were developed, and the state-mandated concussion education was monitored. Other actions approved by the Board included:

- o A new seeding process for tennis singles and tennis teams.
- o Eight sections for both boys' and girls' lacrosse beginning with the 2012-2013 school year.
- o The use of visual aids in speech.
- o Public Forum as an event offered at the section and state level debate competitions beginning with the 2012-2013 school year.
- o An eight team double elimination section tournament in softball and baseball.
- o Expansion of Class A Boys' Swimming and Diving from four sections to six sections beginning with the 2012-2013 school year.
- o A game ending policy for state baseball and softball championship round games.
- o The centennial basketball celebration during the 2012 girls' and boys' basketball tournaments.
- o Additional events for the Wheelchair Division in track and field.
- o The use of golf distance measuring devices.
- o Continued financial support for member schools through the MSHSL Foundation.
- o Seven tournament days exclusively for MSHSL activities in the Viking Stadium bill approved by the legislature and signed by the governor.



The MSHSL staff continues to conduct area meetings throughout the state to share information and to solicit input from administrative groups, coaches associations, fine arts directors, and others involved in the administration of education-based activity programs.

As I complete my four year term on the MSHSL Board of Directors, I want to thank the Minnesota State High School Coaches Association for the confidence they placed in me and to assure them and schools throughout the state that your Board listened to the input you provided well in advance of any decision-making. Board members have always made decisions without regard to personal agendas, and a thoughtful discussion always preceded any action item on the agenda.

As with all successful organizations, the strength of the MSHSL lies in the information and perspective you share with your representative(s) and MSHSL staff. The integrity of each coach, advisor, and administrator provides the foundation upon which the building blocks of education-based activities are reflected.

Thank you for allowing me to serve our member schools as the Board of Directors president.

A handwritten signature in black ink that reads "Mindy Sparby". The signature is written in a cursive, flowing style.

Mindy Sparby  
Belle Plaine High School  
MSHSL Board of Directors, President  
2011-2012

# Mission

The Minnesota State High School League is a non-profit, voluntary association of public and private schools with a history of service to Minnesota youth since 1916. Its mission is to provide educational opportunities through interscholastic athletics and fine arts programs for students and leadership and support for member schools.

We believe:

- o Participation in school activity programs is a privilege and not a right.
- o Sportsmanship needs to have a constant presence in all school-based activity programs.
- o Students should have an equal opportunity to participate in all activities offered by their school.
- o Ethical behavior, dignity and respect are non-negotiable.
- o Student participants who choose to be chemically free must be supported.
- o Collaborative relationships with parents enhance a school's opportunity to positively impact student success.
- o Academic priorities must come before participation in athletics or fine arts activities.
- o Positive role models and an active involvement in a student's life by parents and others are critical to student success.
- o High school activity programs are designed for student participants and adults must serve in a supportive role.
- o The success of the team is more important than individual honors.
- o Compliance with school, community and League rules is essential for all activity participants.
- o Participation in school-sponsored activities must be inclusive, not exclusive.
- o Ethical behavior, fairness, and embracing diversity best serve students and school communities.

# History

The Minnesota State High School League was first organized in 1916 by a group of local superintendents. Then called the State High School Athletic Association, its mission was to promote amateur sports for boys and establish uniform rules for interscholastic contests.

In 1929, the Association broadened its scope to include speech and debate, and the Association's name changed to the Minnesota State High School League.

In 1960, the League incorporated under Minnesota Law as a non-profit, voluntary association of high schools. The League added music to its list of sponsored activities in 1965 and girls' athletics in 1969.

In 1973, Minnesota statutes provided that membership in the League is available to any high school in Minnesota that satisfied the compulsory attendance requirement under Minnesota Law. Thirty-seven non-public schools joined the League the next year.

A review of the League eligibility rules in 1980 resulted in the creation of the TARGET Minnesota, an award-winning program that supports chemically free student leaders.

During the 1990's the League became the first activity association in the nation to sponsor girls' ice hockey. In 1993, the organization took on a new challenge and now offers adapted athletic programs for students with disabilities.

In 2005, the League embarked on a new, innovative initiative called TeamUp. Through this program the League annually provides educational materials to school administrators to help them create a positive, safe athletic environment.

The Minnesota State High School League Foundation was created in 2007 to promote high school students' participation in interscholastic athletic and fine arts activities. The Foundation has awarded more than a million dollars in grants to fulfill its mission.

# Services to Member Schools

The Minnesota State High School League is a service organization providing its membership with publications, training opportunities, recognition programs, post-season tournaments, rules interpretation meetings, and many other services that assist in the administration of interscholastic activities.

The League serves students first and foremost, providing educational experiences through participation in athletics and fine arts activities. Interscholastic competition leads to state tournament competitions which are conducted by the League. Students also are acknowledged through several recognition programs for academic achievements, community service, and leadership.

The League serves its 535 member schools by providing competitive environments with rules that support fair play and equitable competition. School personnel, from elected local school board members to superintendents, from principals to athletic/activity directors, are invited twice annually to area meetings throughout the state to share concerns and discuss issues.

The League serves coaches and officials by providing educational and training opportunities. Through the Continuing Education Requirements, coaches can learn about the science of sport, concussion management, emergency response planning, and the rules that govern both student eligibility and the activities they oversee. Officials are provided with online meetings to review contest rules and are provided opportunities for further training in the mechanics of officiating.

The League serves the public in general as a complimentary extension of the classroom by providing activities for high school youth that teach lifelong lessons and develop responsible citizens. Communication with the general public takes many forms, not the least of which is a comprehensive Web site – [www.mshsl.org](http://www.mshsl.org).

# Grassroots Governance

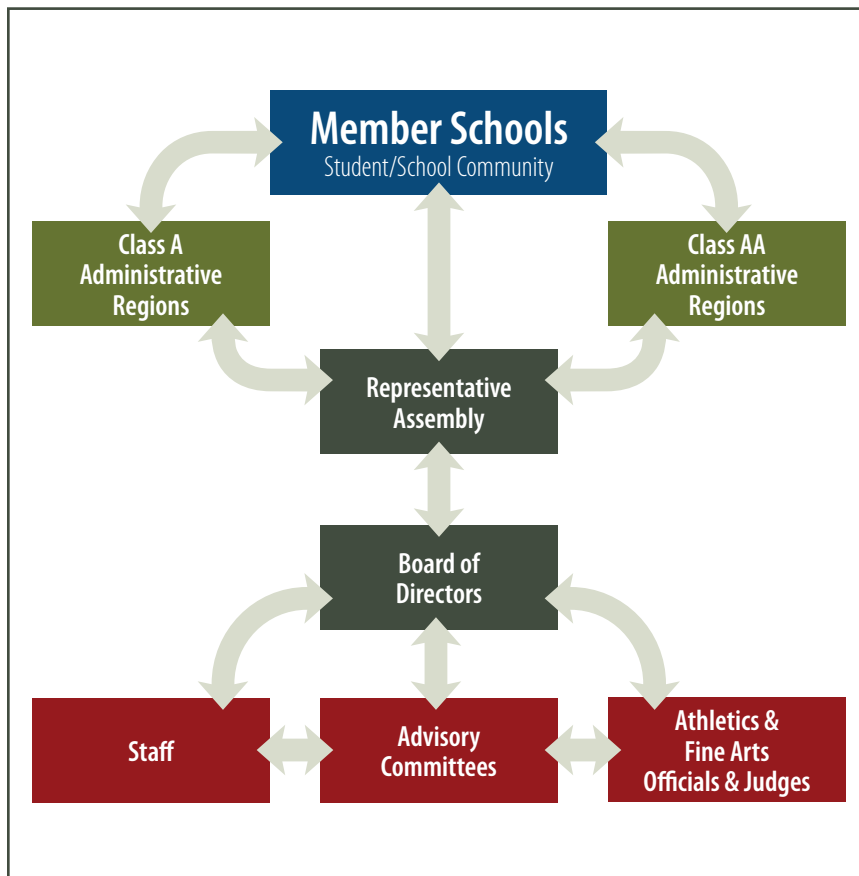
As a non-profit, voluntary association of public and private schools, the League is structured to listen to and respond to its members. Individual school boards decide every year to join the League. Each member school and its composite constituencies—students, parents, coaches, administrators, and school board members—have a voice at the grassroots level known as an administrative region.

A region committee comprised of representatives from League member schools manages the activities and events associated with each administrative region. Each of these 16 committees make decisions about how subsection and section competition is conducted; elect or appoint three people to serve on the Representative Assembly which acts on bylaws that govern eligibility and the administration of League activities; and they review proposed changes to League bylaws before consideration by the Representative Assembly. The committees also report to the 20-member Board of Directors, which oversees the administration of all League activities and events.

Forty-eight people, representing the League's membership, comprise the Representative Assembly, the League's legislative body. The Assembly meets annually to consider all bylaw proposals that come from League member schools, region committees, the Board of Directors, and state athletics and fine arts associations.

Activity Advisory committees provide direct information to the Board of Directors about activity programs. These committees—there's one for each activity the League sponsors—meet once a year to review and recommend changes to athletics and fine arts programs. Activity associations appoint people to serve on the advisory committees. Committee members generally serve two-year terms.

The intent is to involve everyone from students and their parents and coaches to school administrators and their elected school board members, in the League's decision-making process.



# League Activities

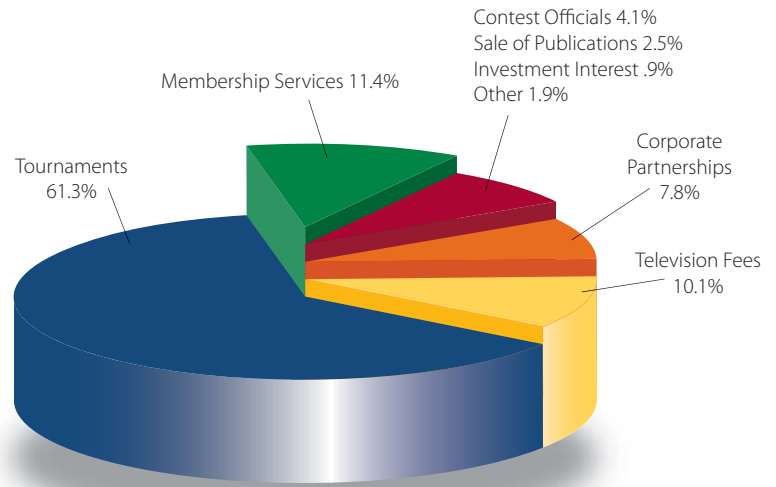
- Adapted Bowling
- Adapted Hockey
- Adapted Soccer
- Adapted Softball
- Girls' & Boys' Alpine Skiing
- Girls' Badminton
- Baseball
- Girls' & Boys' Basketball
- Cheerleading
- Girls' & Boys' Cross Country Running
- Girls' Dance Team
- Debate
- Football
- Girls' & Boys' Golf
- Girls' Gymnastics
- Girls' & Boys' Hockey
- Girls' & Boys' Lacrosse
- Music
- Girls' & Boys' Nordic Ski Racing
- One Act Play
- Robotics
- Girls' & Boys' Soccer
- Girls' Softball
- Speech
- Girls' & Boys' Swimming & Diving
- Girls' Synchronized Swimming
- Girls' & Boys' Tennis
- Girls' & Boys' Track & Field
- Visual Arts
- Girls' Volleyball
- Wrestling

The Minnesota State High School League is a non-profit organization. The League operates on an annual budget of about \$8.3 million and receives no funding from the state legislature.

Revenues generated from tournament ticket sales, broadcast rights fees, and other tournament related-income make up the majority of the League’s operating budget. The remaining portion of the budget comes from corporate sponsorships, publication sales, registration fees and investment income.

At the end of each fiscal year, revenue remaining after all expenses are paid, is distributed to member schools fortunate enough to have competed at the state level. Those shares of revenue during the past 10 years have averaged \$699,000 each year, an average of \$1,942 per school.

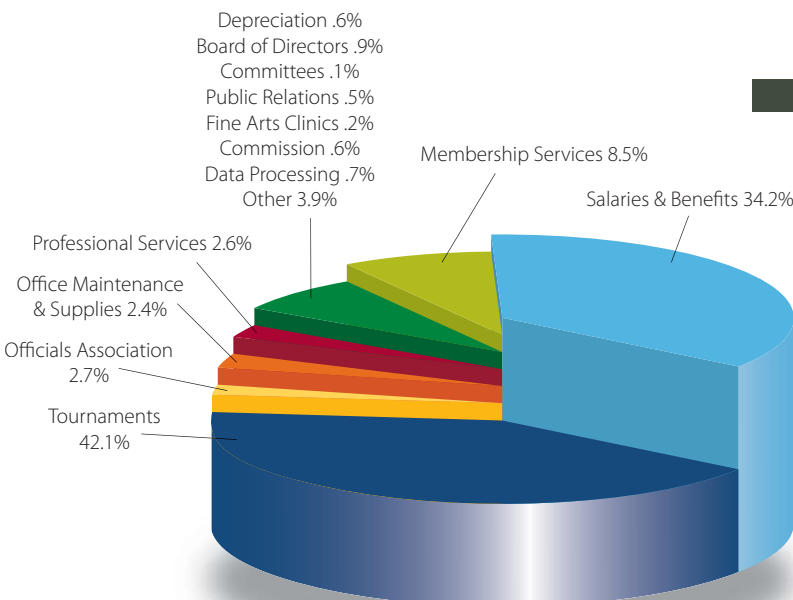
The Office of the State Auditor for Minnesota audits all financial records of the League. The audit report is mailed to League member schools.



## REVENUES \$8,386,943

- Tournaments \$5,137,434
- Television Fees \$849,945
- Membership Services \$952,750
- Sale of Publications \$207,437
- Contest Officials Registration \$344,003
- Investment Interest \$75,170
- Corporate Partnerships \$656,250
- Other \$163,954

## EXPENSES \$8,250,508



- Tournaments & School Reimbursement \$3,476,315
- Salaries & Benefits \$2,818,097
- Professional Services \$213,383
- Membership Services \$697,746
- Office Maintenance & Supplies \$197,176
- Other \$320,288
- Board of Directors \$75,683
- Committees \$11,495
- Officials Associations \$224,074
- Depreciation \$51,525
- Fine Arts Programs \$12,697
- Public Relations \$38,387
- Corporate Partnership Commission \$52,500
- Data Processing \$61,142

# Comparative Schedule of Tournament Revenues and Direct Expenses for the Years Ended July 31, 2012 and 2011

Tournament	2012**			2011*		
	Revenues	Direct Expenses	Excess (Deficiency) of Revenues Over Direct Expenses	Revenues	Direct Expenses	Excess (Deficiency) of Revenues Over Direct Expenses
Baseball	73,314	78,410	(5,096)	85,824	75,862	9,962
Boys' Basketball	512,585	247,009	265,576	529,671	224,865	304,806
Girls' Basketball	316,980	224,103	92,877	289,165	199,954	89,211
Cross Country Running	14,157	31,645	(17,488)	13,490	31,903	(18,413)
Football	880,793	332,691	548,102	822,015	325,431	496,584
Golf	12,283	48,062	(35,779)	11,482	46,819	(35,337)
Girls' Gymnastics	55,172	67,419	(12,247)	47,548	66,362	(18,814)
Boys' Hockey	1,567,477	353,648	1,213,829	1,483,738	343,290	1,140,448
Nordic Ski Racing	4,218	23,799	(19,581)	4,149	24,256	(20,107)
Alpine Skiing	3,979	24,939	(20,960)	4,031	25,201	(21,170)
Soccer	160,916	113,071	47,845	165,114	109,878	55,236
Girls' Softball	64,243	48,393	15,850	57,424	45,844	11,580
Boys' Swimming & Diving	49,332	49,557	(225)	46,450	51,600	(5,150)
Girls' Swimming & Diving	49,444	52,328	(2,884)	49,683	53,619	(3,936)
Boys' Tennis	5,540	34,468	(28,928)	5,117	33,816	(28,699)
Girls' Tennis	6,212	37,569	(31,357)	6,113	38,085	(31,972)
Track and field	131,465	130,652	813	109,085	127,501	(18,416)
Girls' Volleyball	185,627	150,013	35,614	195,446	145,661	49,785
Wrestling	497,242	222,917	274,325	488,478	223,918	264,560
Synchronized Swimming	0	482	(482)	0	1,212	(1,212)
Adapted Soccer	6,073	18,059	(11,986)	5,422	18,469	(13,047)
Adapted Floor Hockey	9,343	20,019	(10,676)	13,266	22,716	(9,450)
Adapted Softball	5,914	18,724	(12,810)	4,774	17,937	(13,163)
Adapted Bowling	1,868	14,265	(12,397)	581	12,472	(11,891)
Debate	7	18,116	(18,109)	0	17,732	(17,732)
Speech	7,771	48,780	(41,009)	7,487	46,471	(38,984)
One Act Play	16,468	21,454	(4,986)	14,515	19,005	(4,490)
Girls' Hockey	268,969	212,050	56,919	282,627	204,263	78,364
Cheerleading	0	1,241	(1,241)	0	826	(826)
Girls' Dance Team	195,146	94,749	100,397	199,473	94,560	104,913
Lacrosse	26,809	24,566	2,243	29,079	23,587	5,492
Badminton	0	0	0	0	646	(646)
Visual Arts	0	4	(4)	(33)	646	(679)
Robotics	8,087	34,433	(26,346)	0	0	0
<b>Total</b>	<b>5,137,434</b>	<b>2,797,635</b>	<b>2,339,799</b>	<b>4,971,214</b>	<b>2,674,407</b>	<b>2,296,807</b>

The tournament direct expenses shown above include only those expenses that are directly associated with conducting the tournaments (i.e. personnel, site, and program costs). School expense reimbursement and indirect costs such as membership services, salaries and benefits, postage, and other general administrative costs of the MSHSL have not been allocated to any specific tournaments and therefore, are not included in the schedule shown above.

\* From State Auditor's Report    \*\* End of year balance on League financial statements

## A 10-Year Comparison of School Reimbursements for Tournament Participation & Activity Registration Refunds

	Number of Schools Participating	Total Amount Returned	Average Per School
2002-03	360	256,233	712
2003-04	357	669,084	1,874
2004-05	364	671,022	1,843
2005-06	365	600,689	1,645
2006-07	360	692,930	1,925
2007-08	365	870,259	2,384
2008-09	487	1,084,736	2,227
2009-10	489	822,524	1,682
2010-11	359	625,388	1,742
2011-12	369	693,679	1,880

# MSHSL CALENDAR OF EVENTS

2012–2013

ACTIVITY	TOURNAMENT DATES	TOURNAMENT SITE
<b>FALL</b>		
Girls' Tennis	October 23–26	AA – University Baseline Tennis Center, Minneapolis A – Reed-Sweatt Family Tennis Center, Minneapolis
Boys' & Girls' Soccer	October 24–26 October 29, 30, November 1	Quarterfinals – Various Sites Semifinals & Finals – Metrodome, Minneapolis
Boys' & Girls' Cross Country Running	November 3	St. Olaf College, Northfield
Girls' Volleyball	November 8–10	Xcel Arena, St. Paul
Adapted Soccer	November 16–17	Stillwater Area High School
Football	November 8–10, 15–17, 23–24	Quarterfinals – Various Sites Semifinals & Prep Bowl – Metrodome, Minneapolis
Girls' Swimming & Diving	November 15–17	University Aquatic Center, Minneapolis
<b>WINTER</b>		
Debate	January 18–19	University of Minnesota, Minneapolis
Music Contests/Festivals	January–May	TBD by each region
One Act Play	February 7–8	The O'Shaughnessy, St. Catherine University, St. Paul
Boys' & Girls' Alpine Skiing	February 13	Giants Ridge, Biwabik
Boys' & Girls' Nordic Ski Racing	February 14	Giants Ridge, Biwabik
Girls' Dance Team	February 15–16	Target Center, Minneapolis
Girls' Hockey	February 20–23	Xcel Arena, St. Paul
Girls' Gymnastics	February 22–23	University Sports Pavilion, Minneapolis
Wrestling	February 28–March 2	Xcel Arena, St. Paul
Boys' Swimming & Diving	February 28–March 2	University Aquatic Center, Minneapolis
Boys' Hockey	March 6–9	Xcel Arena, St. Paul
Girls' Basketball	March 13–16	Target Center, Minneapolis & Williams Arena, Minneapolis
Adapted Floor Hockey	March 15–16	Bloomington Jefferson High School
Boys' Basketball	March 20–23	Target Center, Minneapolis & Williams Arena, Minneapolis
<b>SPRING</b>		
Speech	April 19–20	Blaine High School
Adapted Bowling	May 17	Brunswick Zone, Eden Prairie
Robotics	May 18	Williams Arena, Minneapolis
Adapted Softball	May 31, June 1	Coon Rapids High School
Boys' Tennis	June 4–7	AA – University Baseline Tennis Center, Minneapolis A – Reed-Sweatt Family Tennis Center, Minneapolis
Girls' Fastpitch Softball	June 6–7	Caswell Park, North Mankato
Boys' & Girls' Track & Field	June 7–8	Hamline University, St. Paul
Girls' Synchronized Swimming	June 8	University Aquatic Center, Minneapolis
Boys & Girls' Lacrosse	June 11–15	Chanhassen & Chaska High Schools
Boys' & Girls' Golf	June 11–12	AAA – Bunker Hills, Coon Rapids AA – Ridges at Sand Creek, Jordan A – Pebble Creek, Becker
Baseball	June 13–14	AAA – Midway Stadium, St. Paul & Dick Siebert Field, University of MN, Minneapolis AA – Dick Putz Stadium & Joe Faber Fields, St. Cloud A – Chaska Athletic Park & Mini Met, Jordan
	June 19	Championship Games – Target Field, Minneapolis

Photography Credits: Minnesota Prep Photo / [www.MnPrepPhoto.com](http://www.MnPrepPhoto.com)

This report is a publication of the Minnesota State High School League. No reproduction of this document is permissible without the written consent of the Minnesota State High School League.