



# ANNUAL



# REPORT



2012 - 2013



# 2012–2013 MSHSL Board of Directors



**Mark Fredericksen**  
Waconia  
President



**John Hamann**  
Underwood  
Vice President



**Rick Bleichner**  
Breckenridge  
Treasurer



**Tom Conzemius**  
Sauk Rapids-Rice



**Steve Eklund**  
Braham



**Laurie Esau**  
Orono



**Bob Grey**  
Montevideo



**Walter Hautala**  
Mesabi East



**Shelly Hotzler**  
Jackson County Central



**Dan Johnson**  
Hopkins



**Mike Kolness**  
Ada-Borup



**Mike Manning**  
Rosemount



**Erich Martens**  
Sauk Rapids-Rice



**Scott McCready**  
St. Charles



**Chris McDonald**  
Eagan



**Lea B. Olsen**  
Minneapolis



**Roz Peterson**  
Lakeville



**Lane Powell**  
Fillmore Central



**Mike Rusinko**  
Eden Prairie



**Mark Solberg**  
Cambridge-Isanti

## 2012–2013 Representative Assembly Delegates

*The rulesmaking body of the Minnesota State High School League*

### CLASS A REGIONS

#### Region 1A

1. Shane McBroom, Principal, Rushford-Peterson
2. Al Nelson, School Board Member, Wabasha-Kellogg
3. Corey Wagner, Athletic Director, Hayfield

#### Region 2A

4. Jim Amsden, Principal, Sibley East, Arlington
5. Jeff Boran, Athletic Director, Waterville-Elysian-Morristown
6. Rob Norman, Activities/Athletic Director, Blue Earth Area

#### Region 3A

7. Mike Knutson, Athletic Director, Benson
8. Bryce Pack, Athletic Director, Red Rock Central, Lamberton
9. Todd Oye, Athletic Director, Luverne

#### Region 4A

10. Curt Wetsel, Athletic Director, New Life Academy of Woodbury
11. Chris Laird, Athletic Director, Heritage Christian Academy, Maple Grove
12. Mike Brown, Asst. Administrator, St. Paul Academy and Summit School

#### Region 5A

13. John Vraa, Athletic Director, New London-Spicer
14. Jerry Westphal, Athletic Director, Milaca
15. Michael Johnson, Athletic Director, Foley

#### Region 6A

16. Jenda Johnson, Teacher, Ashby
17. Scott Monson, Superintendent, Morris Area
18. Tony Thiel, Athletic Director, Wheaton

#### Region 7A

19. Kathy Fredricksen, Athletic Director, Moose Lake
20. James Lah, Fine Arts, Ely
21. Chad Stoskopf, Athletic Director, Esko

#### Region 8A

22. Tim Lutz, Superintendent, Kelliher
23. Dave Pace, Superintendent, East Grand Forks
24. Travis Smith, Girls' Sports Representative, Grygla

### CLASS AA REGIONS

#### Region 1AA

25. Brad Skogerboe, Athletic Director, New Prague
26. Tom Graupmann, Athletic Director, Northfield
27. Paul Cox, Athletic Director, Rochester John Marshall

#### Region 2AA

28. Bruce Remme, Activities Director, Marshall
29. Tom Bauman, Activity Director, Buffalo
30. Dick Ungar, Activities Director, Chanhassen

#### Region 3AA

31. Brian Fell, Activities Director, Bloomington Jefferson
32. Greg Juba, Coach, Park, Cottage Grove
33. Pete Buesgens, Athletic Director, Apple Valley

#### Region 4AA

34. Jed Helwig, Athletic Director, North, North St. Paul
35. John Brodrick, School Board Member, St. Paul Schools
36. Rich Keller, Teacher/Coach, Stillwater Area

#### Region 5AA

37. Kelley Scott, Activities Director, Coon Rapids
38. Ron Broberg, Athletic Director, Irondale, New Brighton
39. Larry Lawler, Athletic Director, Park Center, Brooklyn Park

#### Region 6AA

40. Darren Ginther, Athletic Director, Minneapolis Edison
41. Andy Ewald, Athletic Director, St. Louis Park
42. Dave Wicker, Asst. Director of Athletics, Minneapolis Public Schools

#### Region 7AA

43. Beth Clark, Activities Director, Hermantown
44. Tom Lenarz, Activities Director/Coach, Cloquet
45. Joe Silko, Superintendent, Grand Rapids

#### Region 8AA

46. Lisa Johnson, Athletic Principal, Bemidji
47. Chris McElroy, Activities Director, St. Cloud Apollo
48. Gary Revenig, Activities Director, Monticello

## MSHSL Administrative Staff

Executive Director ..... David Stead  
Executive Assistant ..... Lynne Johnson  
Associate Director ..... Lisa Lissimore  
Administrative Assistant ..... Sheila Robinson  
Associate Director ..... Kevin Merkle  
Administrative Assistant ..... Amanda Johnson  
Officials' Coordinator ..... Katie Schulte  
Associate Director ..... Jody Redman  
Administrative Assistant ..... Amie Ince

Associate Director ..... Craig Perry  
Administrative Assistant ..... Susi Hollenbeck  
Assistant Director ..... Richard Matter  
Accounting Assistant ..... Sharon Bahma  
Ticket Assistant ..... Nancy Myers  
Assistant Director ..... Chris Franson  
Web Site Coordinator ..... Nancy Etter  
Graphic Designer ..... Tracie Bressler

Director of Information ..... Howard Voigt  
Assistant Information Director ..... Ellen Rajkowski  
Media Credentialing Assistant ..... Yvonne Walsh  
Media Specialist ..... John Millea  
Program Specialist ..... Amy Doherty  
Office Manager ..... Kristi Vesall  
Administrative Assistant ..... Yvonne Walsh  
Receptionist ..... Ann Bailey

# PRESIDENT'S REPORT

It was my great pleasure to have served as the president of the Minnesota State High School League Board of Directors during the 2012-2013 school year. School boards and school communities, like the League, have faced programmatic and economic challenges, but the League's Board of Directors continue to focus on policy decisions that provide education-based athletic and fine arts activities for students in our member schools in as many ways as possible.



Tournament related proposals, as well as expanded activities, were addressed by the Board of Directors. Continuing Education Requirements for head coaches and assistant coaches were reviewed and modified; new training modules were developed; the state-mandated concussion education was monitored; educational initiatives through on-line rules meetings were developed; and the Why We Play Conference trained more than 675 coaches and activity directors. This first-time workshop drew rave reviews from coaches and presenters alike, and plans are already underway for a second such workshop in 2014. Some of the other actions approved by the Board include:

- o A request from the Minnesota State High School Clay Target League for the League to become a Presenting Partner of the Clay Target Shooting State Tournament beginning with the 2013-2014 school year.
- o Competitive Section Placement for 2013 -2015.
- o Format changes to the state girls' and boys' basketball tournaments for the next five years due to the inability to contract facilities.
- o Celebration plans during the 2015-2016 school year to commemorate the MSHSL 100 year anniversary.
- o A review of the League's Mission Statement and adoption of the tagline "Education and Leadership for a Lifetime".
- o New timelines for cooperative sponsorship submission.
- o Continued financial support for member schools through the MSHSL Foundation.

The MSHSL staff has continued to conduct the fall and spring area meetings throughout the state, and information was gathered from administrative groups, coaches associations, and others involved in the administration of education-based activity programs. This input formed the Board of Director goals for the 2013-2014 school year.

My four years as a member of the MSHSL Board of Directors have flown by. I was blessed to have had an opportunity to represent Administrative Region 1AA & 2AA and I want to thank them for the confidence they placed in me. Moreover, I want to assure our entire membership that we have a board and staff that listens to the input provided by all stakeholders well in advance of any decision-making. Board members have always made decisions without regard to personal agendas, and a thoughtful discussion always preceded any action item on the agenda.

As with all successful organizations, the strength of our League lies in the collective willingness to receive information shared with your Board of Directors representative(s) and the support provided by the League staff who carry out each new initiative with consistency and enthusiasm. And, the integrity and trust placed on each coach, advisor, and administrator provides a solid foundation upon which success can be achieved.

Thank you for allowing me to serve our students, our member schools, and our school communities as your Board of Directors president.

A handwritten signature in black ink, appearing to read "Mark Fredericksen".

Mark Fredericksen  
Waconia High School  
MSHSL Board of Directors, President  
2012-2013

# Mission

The Minnesota State High School League is a non-profit, voluntary association of public and private schools with a history of service to Minnesota youth since 1916. Its mission is to provide educational opportunities through interscholastic athletics and fine arts programs for students and leadership and support for member schools.

We believe:

- o Participation in school activity programs is a privilege and not a right.
- o Sportsmanship needs to have a constant presence in all school-based activity programs.
- o Students should have an equal opportunity to participate in all activities offered by their school.
- o Ethical behavior, dignity and respect are non-negotiable.
- o Student participants who choose to be chemically free must be supported.
- o Collaborative relationships with parents enhance a school's opportunity to positively impact student success.
- o Academic priorities must come before participation in athletics or fine arts activities.
- o Positive role models and an active involvement in a student's life by parents and others are critical to student success.
- o High school activity programs are designed for student participants and adults must serve in a supportive role.
- o The success of the team is more important than individual honors.
- o Compliance with school, community and League rules is essential for all activity participants.
- o Participation in school-sponsored activities must be inclusive, not exclusive.
- o Ethical behavior, fairness, and embracing diversity best serve students and school communities.

# History

The Minnesota State High School League was first organized in 1916 by a group of local superintendents. Then called the State High School Athletic Association, its mission was to promote amateur sports for boys and establish uniform rules for interscholastic contests.

In 1929, the Association broadened its scope to include speech and debate, and the Association's name changed to the Minnesota State High School League.

In 1960, the League incorporated under Minnesota Law as a non-profit, voluntary association of high schools. The League added music to its list of sponsored activities in 1965 and girls' athletics in 1969.

In 1973, Minnesota statutes provided that membership in the League is available to any high school in Minnesota that satisfied the compulsory attendance requirement under Minnesota Law. Thirty-seven non-public schools joined the League the next year.

A review of the League eligibility rules in 1980 resulted in the creation of the TARGET Minnesota, an award-winning program that supports chemically free student leaders.

During the 1990's the League became the first activity association in the nation to sponsor girls' ice hockey. In 1993, the organization took on a new challenge and now offers adapted athletic programs for students with disabilities.

In 2007, the Minnesota State High School League Foundation was created to promote student participation in interscholastic athletics and fine arts activities. The Foundation has awarded more than a million dollars in grants to fulfill its mission.

Today, more than 500 high schools are League members. Those schools provide athletics and fine arts activities for more than 200,000 students statewide.

# Services to Member Schools

The Minnesota State High School League is a service organization providing its membership with publications, training opportunities, recognition programs, post-season tournaments, rules interpretation meetings, and many other services that assist in the administration of interscholastic activities.

The League serves students first and foremost, providing educational experiences through participation in athletics and fine arts activities. Interscholastic competition leads to state tournament competitions which are conducted by the League. Students also are acknowledged through several recognition programs for academic achievements, community service, and leadership.

The League serves its 525 member schools by providing competitive environments with rules that support fair play and equitable competition. School personnel, from elected local school board members to superintendents, from principals to athletic/activity directors, are invited twice annually to area meetings throughout the state to share concerns and discuss issues.

The League serves coaches and contest officials by providing educational and training opportunities. Through the Coaches Education Program, coaches can learn about the fundamentals of coaching, concussion management, emergency response planning, and the rules that govern both student eligibility and the activities they oversee. Officials are provided with online meetings to review contest rules and are provided opportunities for further training in the mechanics of officiating.

The League serves the public in general as a complimentary extension of the classroom by providing activities for high school youth that teach lifelong lessons and develop responsible citizens. Communication with the general public takes many forms, not the least of which is a comprehensive Web site – [www.mshsl.org](http://www.mshsl.org).

# Grassroots Governance

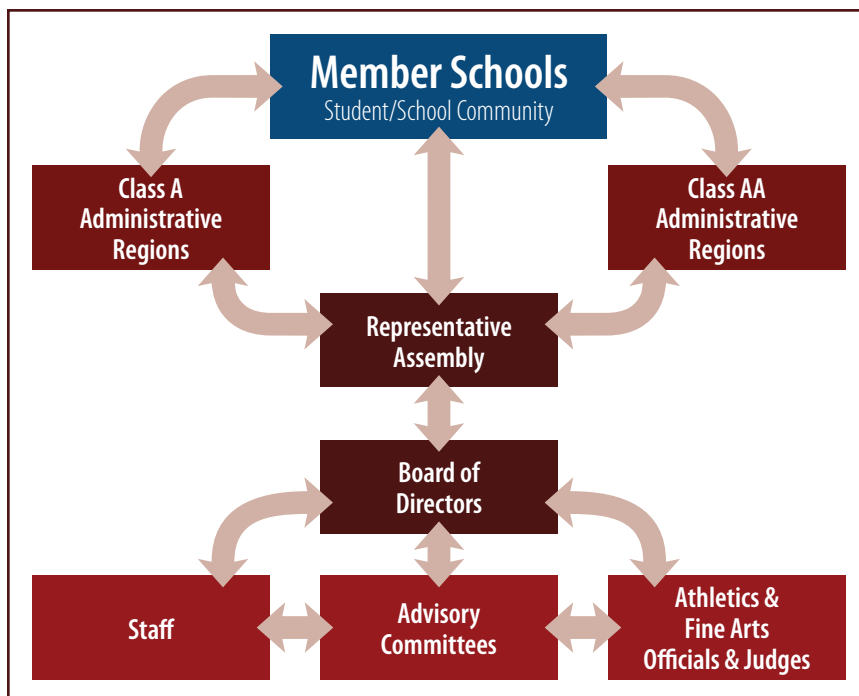
As a non-profit, voluntary association of public and private schools, the League is structured to listen to and respond to its members. Individual school boards decide every year to join the League. Each member school and its composite constituencies—students, parents, coaches, administrators, and school board members—have a voice at the grassroots level known as an administrative region.

A region committee comprised of representatives from League member schools manages the activities and events associated with each administrative region. Each of these 16 committees—8 Class A and 8 Class AA—make decisions about how subsection and section competition is conducted; elect or appoint three people to serve on the Representative Assembly which acts on bylaws that govern eligibility and the administration of League activities; and they review proposed changes to League bylaws before consideration by the Representative Assembly. The committees also report to the 20-member Board of Directors, which oversees the administration of all League activities and events.

Forty-eight people, representing the League's membership, comprise the Representative Assembly, the League's legislative body. The Assembly meets annually to consider all bylaw proposals that come from League member schools, region committees, the Board of Directors, and state athletics and fine arts associations. League bylaws govern the addition of new activities, season lengths, number of contests, eligibility standards, and amateurism requirements of student athletes and fine art participants. Bylaws also set requirements for conduct, enrollment, and they give direction to scholarship, student transfers, and many other areas important to the sound administration of high school athletic and fine arts programs.

Activity Advisory committees provide direct information to the Board of Directors about activity programs. These committees—there's one for each activity the League sponsors—meet once a year to review and recommend changes to athletics and fine arts programs. Activity associations appoint people to serve on the advisory committees. Committee members generally serve two-year terms.

The intent is to involve everyone from students and their parents and coaches to school administrators and their elected school board members, in the League's decision-making process.



# League Activities

- Adapted Bowling
- Adapted Hockey
- Adapted Soccer
- Adapted Softball
- Girls' & Boys' Alpine Skiing
- Girls' Badminton
- Baseball
- Girls' & Boys' Basketball
- Cheerleading
- Girls' & Boys' Cross Country Running
- Girls' Dance Team
- Debate
- Football
- Girls' & Boys' Golf
- Girls' Gymnastics
- Girls' & Boys' Hockey
- Girls' & Boys' Lacrosse
- Music
- Girls' & Boys' Nordic Ski Racing
- One Act Play
- Robotics
- Girls' & Boys' Soccer
- Girls' Softball
- Speech
- Girls' & Boys' Swimming & Diving
- Girls' Synchronized Swimming
- Girls' & Boys' Tennis
- Girls' & Boys' Track & Field
- Visual Arts
- Girls' Volleyball
- Wrestling

# LEAGUE FINANCES

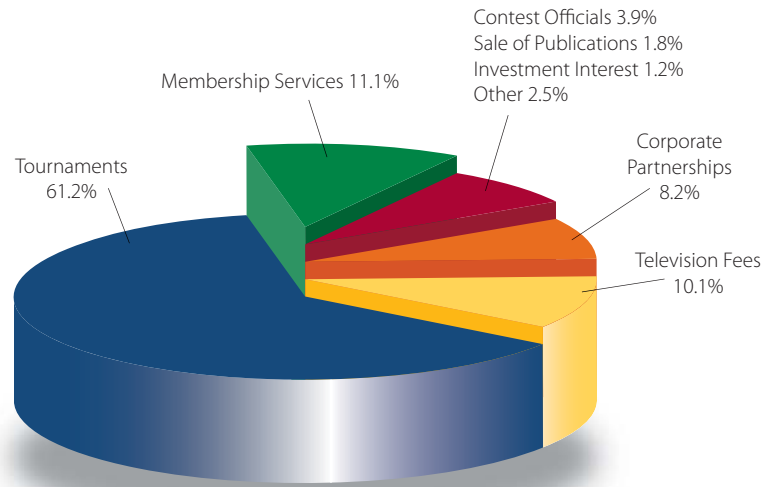
2012–2013

The Minnesota State High School League is a non-profit organization. The League operates on an annual budget of about \$8.3 million and receives no funding from the state legislature.

Revenues generated from tournament ticket sales, broadcast rights fees, and other tournament related-income make up the majority of the League’s operating budget. The remaining portion of the budget comes from corporate sponsorships, publication sales, registration fees and investment income.

At the end of each fiscal year, revenue remaining after all expenses are paid, is distributed to member schools fortunate enough to have competed at the state level. Those shares of revenue during the past 10 years have averaged \$744,000 each year, an average of \$2,011 per school.

The Office of the State Auditor for Minnesota audits all financial records of the League. The audit report is mailed to League member schools.

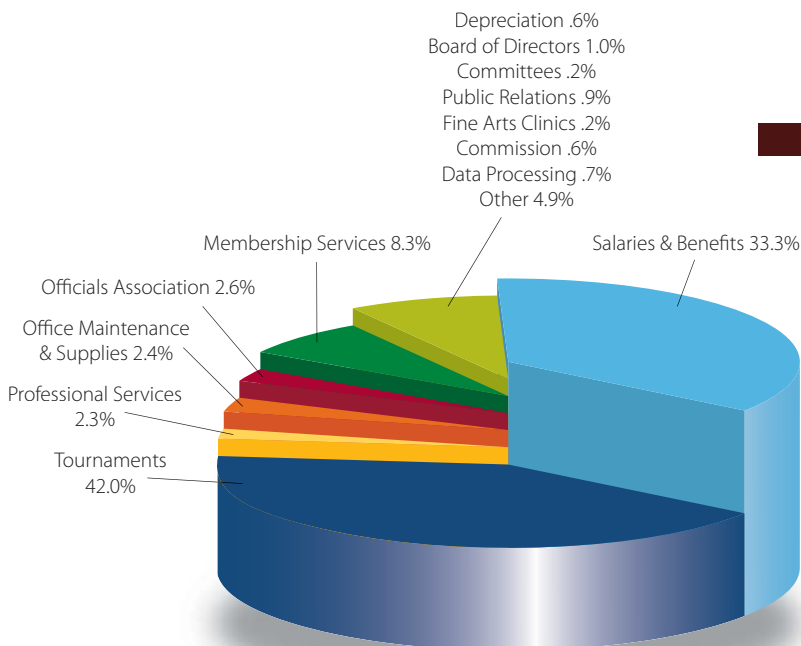


## REVENUES \$8,620,286

- Tournaments \$5,277,310
- Television Fees \$870,318
- Membership Services \$960,580
- Sale of Publications \$153,535
- Contest Officials Registration \$334,611
- Investment Interest \$109,256
- Corporate Partnerships \$695,167
- Other \$219,509

## EXPENSES \$8,626,121

- Tournaments & School Reimbursements \$3,601,367
- Salaries & Benefits \$2,903,439
- Professional Services \$200,602
- Membership Services \$710,819
- Office Maintenance & Supplies \$208,214
- Other \$421,353
- Board of Directors \$85,328
- Committees \$18,176
- Officials Associations \$223,567
- Depreciation \$53,285
- Fine Arts Programs \$16,114
- Public Relations \$72,288
- Corporate Partnership Commission \$52,500
- Data Processing \$59,069





# Comparative Schedule of Tournament Revenues and Direct Expenses for the Years Ended July 31, 2013 and 2012

Tournament	2013**			2012*		
	Revenues	Direct Expenses	Excess (Deficiency) of Revenues Over Direct Expenses	Revenues	Direct Expenses	Excess (Deficiency) of Revenues Over Direct Expenses
Baseball	91,705	75,705	16,000	73,314	78,450	(5,136)
Boys' Basketball	562,253	224,245	338,008	512,585	247,049	265,536
Girls' Basketball	328,559	204,384	124,175	316,980	224,143	92,837
Cross Country Running	15,474	27,850	(12,376)	14,157	31,685	(17,528)
Football	990,452	396,168	594,284	880,793	332,731	548,062
Golf	12,674	57,322	(44,648)	12,257	49,154	(36,897)
Girls' Gymnastics	49,856	67,746	(17,890)	55,171	67,459	(12,288)
Boys' Hockey	1,487,593	372,456	1,115,137	1,567,477	353,688	1,213,789
Nordic Ski Racing	3,820	23,621	(19,801)	4,218	23,839	(19,621)
Alpine Skiing	4,362	26,744	(22,382)	3,979	24,979	(21,000)
Soccer	148,361	118,010	30,351	160,916	113,111	47,805
Girls' Softball	60,076	48,763	11,313	64,243	48,546	15,697
Boys' Swimming & Diving	50,288	49,322	966	49,332	49,597	(265)
Girls' Swimming & Diving	52,200	49,488	2,712	49,444	52,368	(2,924)
Boys' Tennis	5,277	36,189	(30,912)	5,516	34,508	(28,992)
Girls' Tennis	6,355	39,771	(33,416)	6,212	37,609	(31,397)
Track and field	141,178	138,871	2,307	131,464	130,692	772
Girls' Volleyball	186,439	151,187	35,252	185,627	150,053	35,574
Wrestling	528,905	232,748	296,157	497,241	222,957	274,284
Synchronized Swimming	0	505	(505)	0	482	(482)
Adapted Soccer	7,374	18,917	(11,543)	6,073	18,099	(12,026)
Adapted Floor Hockey	10,057	19,606	(9,549)	9,343	20,059	(10,716)
Adapted Softball	6,850	19,319	(12,469)	5,914	18,763	(12,849)
Adapted Bowling	1,478	13,187	(11,709)	1,868	14,304	(12,436)
Debate	0	22,525	(22,525)	6	18,156	(18,150)
Speech	8,641	48,544	(39,903)	7,771	48,820	(41,049)
One Act Play	17,774	23,393	(5,619)	16,457	21,494	(5,037)
Girls' Hockey	259,229	220,316	38,913	268,969	212,090	56,879
Cheerleading	0	1,254	(1,254)	0	1,241	(1,241)
Girls' Dance Team	190,374	97,042	93,332	195,146	94,789	100,357
Lacrosse	44,247	43,693	554	26,809	24,605	2,204
Badminton	0	0	0	0	0	0
Visual Arts	0	959	(959)	0	4	(4)
Robotics	5,549	37,337	(31,878)	8,091	34,475	26,384
<b>Total</b>	<b>5,277,310</b>	<b>2,907,187</b>	<b>2,370,123</b>	<b>5,137,373</b>	<b>2,799,999</b>	<b>2,337,374</b>

The tournament direct expenses shown above include only those expenses that are directly associated with conducting the tournaments (i.e. personnel, site, and program costs). School expense reimbursement and indirect costs such as membership services, salaries and benefits, postage, and other general administrative costs of the MSHSL have not been allocated to any specific tournaments and therefore, are not included in the schedule shown above.

\* From State Auditor's Report    \*\* End of year balance on League financial statements

## A 10-Year Comparison of School Expense Reimbursements for Tournament Participation & Activity Registration Refunds

	Number of Schools Participating	Total Amount Returned	Average Per School
2003-04	357	669,084	1,874
2004-05	364	671,022	1,843
2005-06	365	600,689	1,645
2006-07	360	692,930	1,925
2007-08	365	870,259	2,384
2008-09	487	1,084,736	2,227
2009-10	489	822,524	1,682
2010-11	359	625,388	1,742
2011-12	369	693,679	1,880
2012-13	373	712,450	1,910

# MSHSL CALENDAR OF EVENTS

2013–2014

ACTIVITY	TOURNAMENT DATES	TOURNAMENT SITE
<b>FALL</b>		
Girls' Tennis	October 22–25	AA – University Baseline Tennis Center, Minneapolis A – Reed-Sweatt Family Tennis Center, Minneapolis
Boys' & Girls' Soccer	October 23–25 October 28–29, October 31	Quarterfinals – Various Sites Semifinals & Finals – Metrodome, Minneapolis
Boys' & Girls' Cross Country Running	November 2	St. Olaf College, Northfield
Girls' Volleyball	November 7–9	Xcel Arena, St. Paul
Adapted Soccer	November 15–16	Stillwater Area High School
Football	November 7–9, 14–16, 29–30	Quarterfinals – Various Sites Semifinals & Prep Bowl – Metrodome, Minneapolis
Girls' Swimming & Diving	November 18–20	University Aquatic Center, Minneapolis
<b>WINTER</b>		
Debate	January 17–18	University of Minnesota, Minneapolis
Music Contests/Festivals	January–May	TBD by each region
Boys' & Girls' Alpine Skiing	February 12	Giants Ridge, Biwabik
Boys' & Girls' Nordic Ski Racing	February 13	Giants Ridge, Biwabik
One Act Play	February 13–14	The O'Shaughnessy, St. Catherine University, St. Paul
Girls' Dance Team	February 14–15	Target Center, Minneapolis
Girls' Hockey	February 19–22	Xcel Arena, St. Paul
Girls' Gymnastics	February 21–22	University Sports Pavilion, Minneapolis
Wrestling	February 27–March 1	Xcel Arena, St. Paul
Boys' Swimming & Diving	February 27–March 1	University Aquatic Center, Minneapolis
Boys' Hockey	March 5–8	Xcel Arena, St. Paul
Boys' Basketball	March 12–15	Target Center, Minneapolis & Williams Arena, Minneapolis
Adapted Floor Hockey	March 14–15	Bloomington Jefferson High School
Girls' Basketball	March 18–22	Target Center, Minneapolis & Williams Arena, Minneapolis
<b>SPRING</b>		
Speech	April 11–12	Blaine High School
Adapted Bowling	May 16	Brunswick Zone, Brooklyn Park
Robotics	May 17	University of Minnesota, Minneapolis
Adapted Softball	May 30–31	Coon Rapids High School
Boys' Tennis	June 3–6	AA – University Baseline Tennis Center, Minneapolis A – Reed-Sweatt Family Tennis Center, Minneapolis
Girls' Fast-Pitch Softball	June 5–6	Caswell Park, North Mankato
Boys' & Girls' Track & Field	June 6–7	Hamline University, St. Paul
Boys' & Girls' Golf	June 10–11	AAA – Bunker Hills, Coon Rapids AA – Ridges at Sand Creek, Jordan A – Pebble Creek, Becker
Boys & Girls' Lacrosse	June 10–14	Chanhassen & Chaska High Schools
Baseball	June 12–13	AAA – Midway Stadium, St. Paul & Dick Siebert Field, University of MN, Minneapolis AA – Dick Putz Stadium & Joe Faber Fields, St. Cloud A – Chaska Athletic Park & Mini Met, Jordan
	June 14	Championship Games – Target Field, Minneapolis

Photography Credits: Minnesota Prep Photo / [www.MnPrepPhoto.com](http://www.MnPrepPhoto.com)

This report is a publication of the Minnesota State High School League. No reproduction of this document is permissible without the written consent of the Minnesota State High School League.