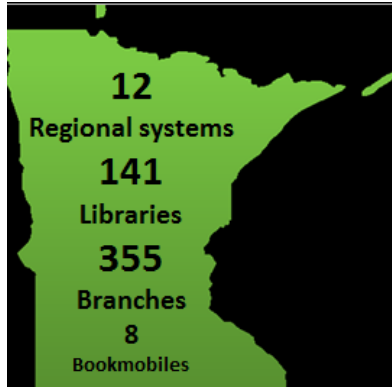




Minnesota Public Library Statistics, 2005 to 2015



Minnesota's public libraries serve as centers for learning, innovation and inspiration in communities across the state.

The following statistics represent the change in Minnesota public library resources and usage from 2005 to 2015.

The Scorecard shows the ten-year trend.

The Ten-year averages represent the numerical averages for Minnesota public library resources and usage for each year.

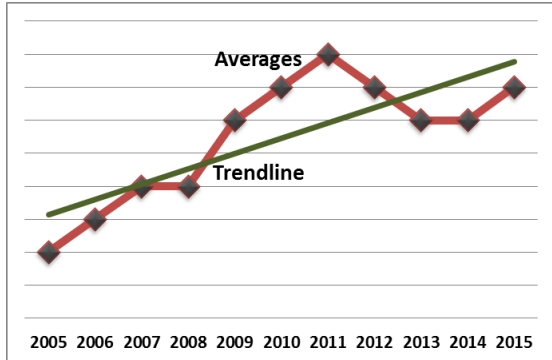
Scorecard

LIBRARY SERVICE	2005 TOTAL	2015 TOTAL	PERCENT CHANGE	TREND
Registered users	3,405,993	3,860,346	13.34%	↑
Public service hours	718,899	736,035	2.38%	↑
Visits	26,101,576	24,340,258	-6.75%	↓
Physical materials	17,978,803	16,292,602	-9.38%	↓
E-books	2,195,915	4,156,748	89.29%	↑
Loans	51,141,795	52,512,434	2.68%	↑
Reference transactions	3,985,204	3,707,300	-6.97%	↓
Public computers/devices	3,696	6,559	77.46%	↑
Public Internet sessions	10,867,336	5,089,532	-53.17%	↓
Library programs	37,214	64,251	72.65%	↑
Program attendance	997,868	1,475,550	47.87%	↑
Public meetings	36,021	59,597	65.45%	↑
Librarian FTE	783.88	790.00	0.78%	↑
Other staff FTE	1,617.30	1,413.77	-12.58	↓
Total staff FTE	2,401.18	2,203.77	-8.22%	↓

Ten-year averages

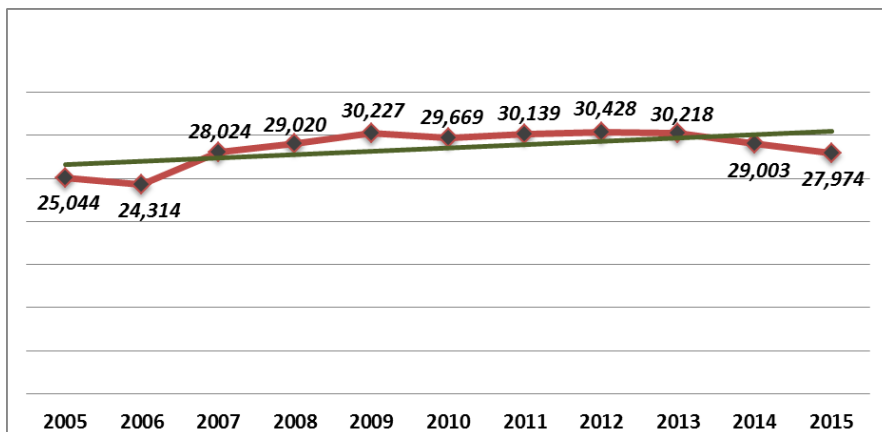
Key

Averages are the totals of resources or uses for all public libraries in Minnesota divided by the number of libraries. The *trendline* represents the overall increase or decrease over the ten-year period.



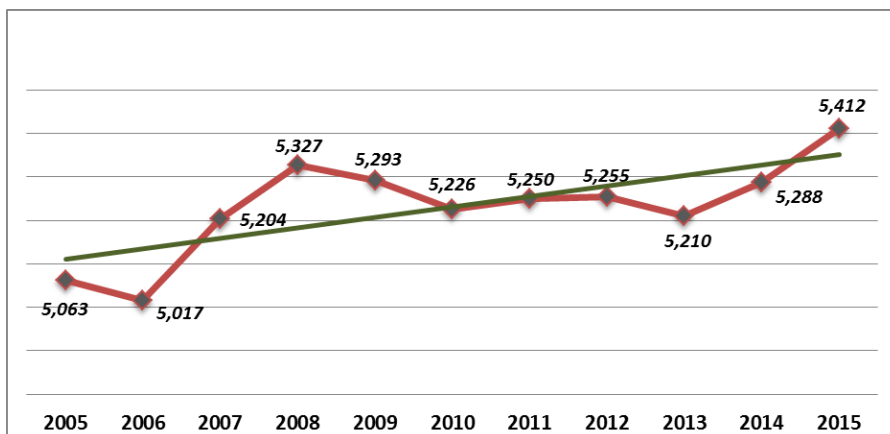
Registered library users

The average number of people who are registered to borrow library materials



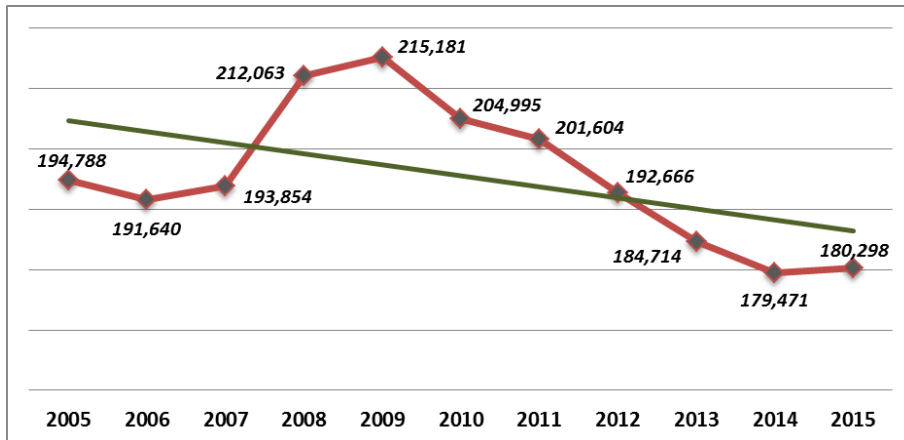
Public service hours

The average number of hours libraries are open to the public adjusting for holidays and seasonal schedules



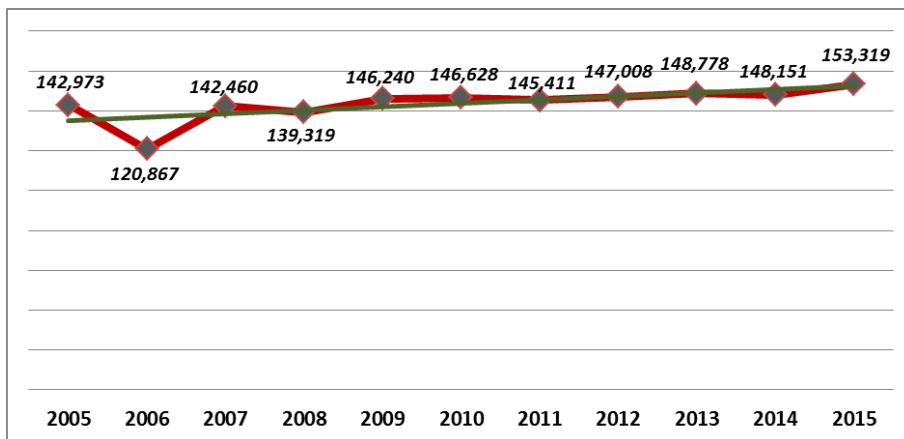
Visits

The average number of people who entered libraries for any reason



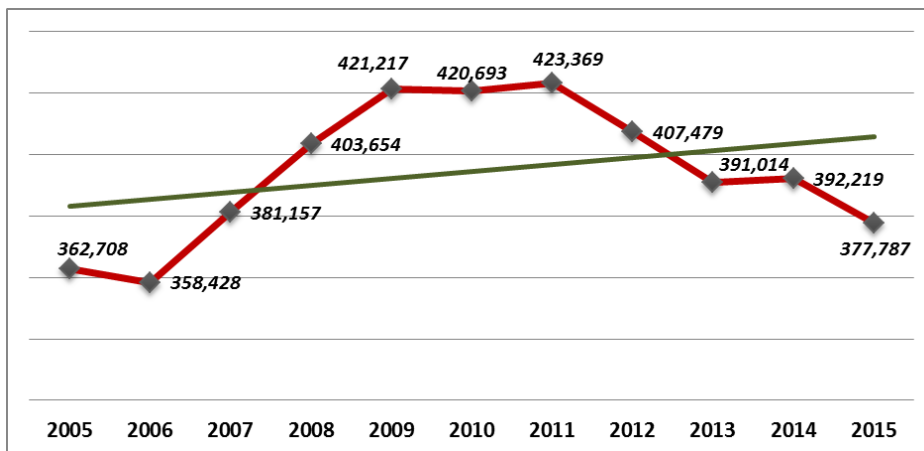
Collection size

The average number of books, CDs, DVDs and other physical materials plus the number of e-books, downloadable audio books, music, videos and other electronic titles available for loan in libraries



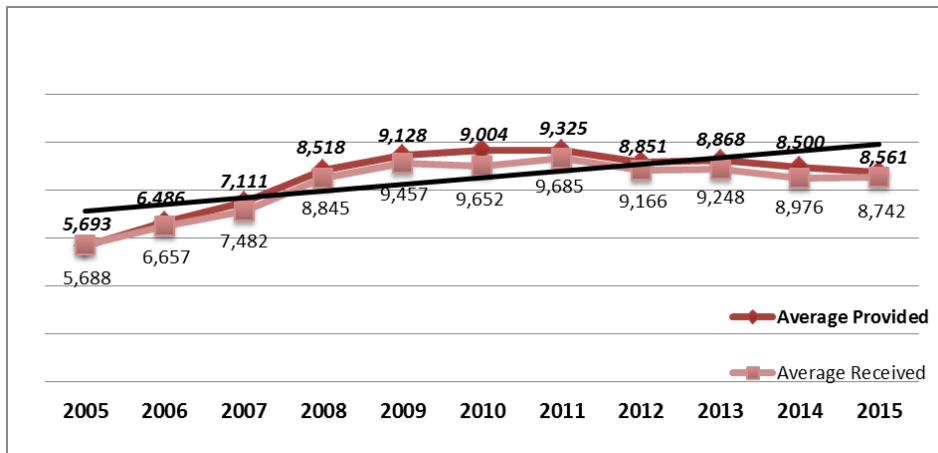
Loans

The average number of times library materials were borrowed including renewals in all formats



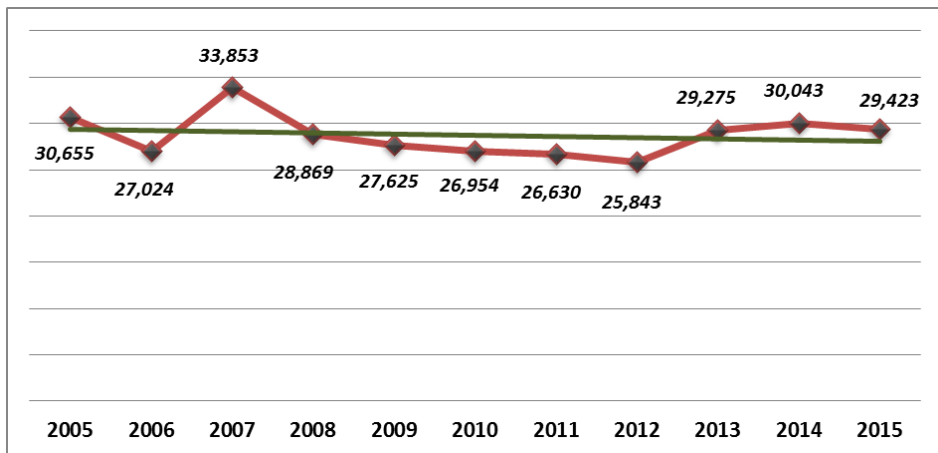
Interlibrary loans

The average number of items provided on request by one library to another independent library to satisfy a patron request



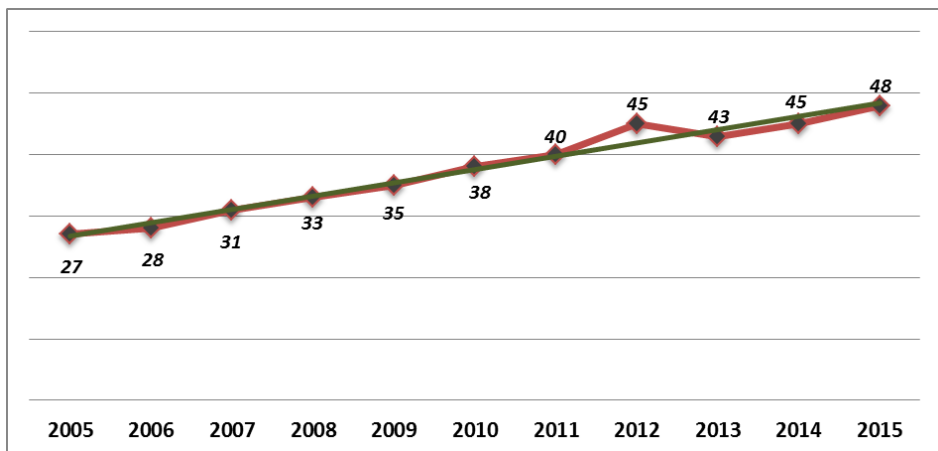
Reference transactions

The average number of patron contacts with library staff that involves the knowledge, use, recommendation, interpretation and/or instruction in the use of one or more information sources



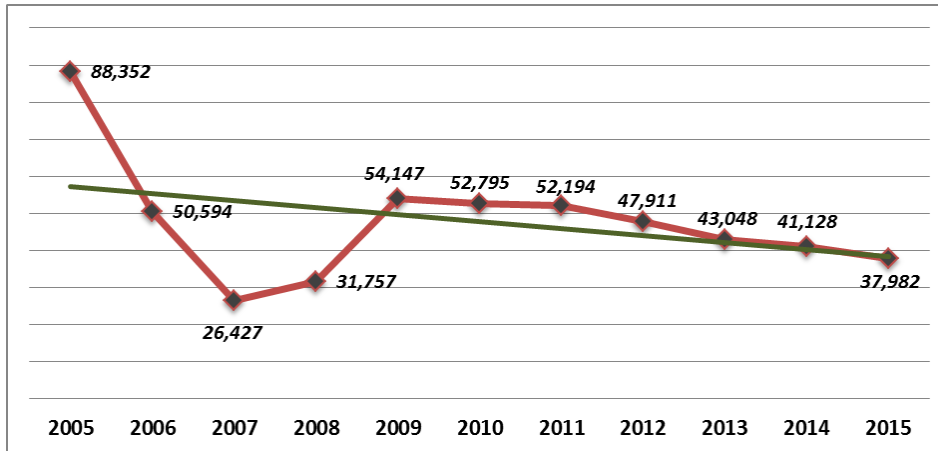
Public computers

The average number of desktop computers and mobile devices such as laptops, tablets, and e-readers available for public use in libraries



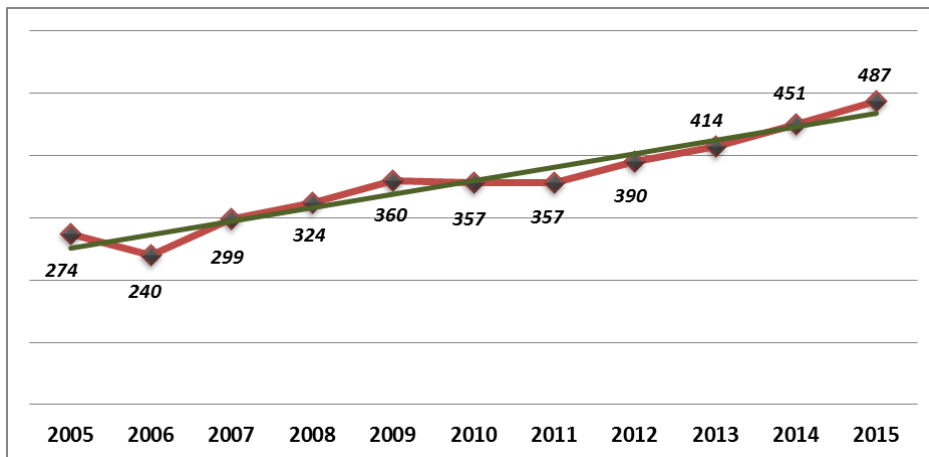
Public computer sessions

The average number of uninterrupted uses of libraries' public computers and mobile devices connected to the Internet



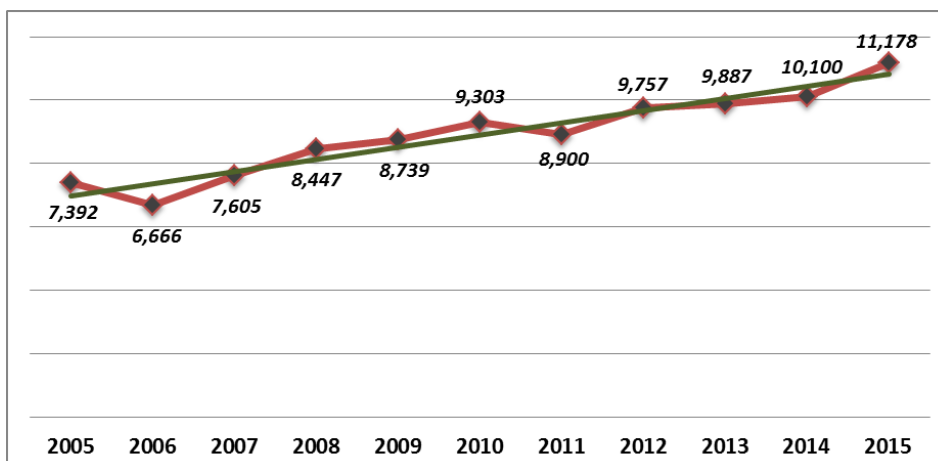
Programs

The average number of on- or off-site programs for any age group sponsored or co-sponsored by libraries during the year



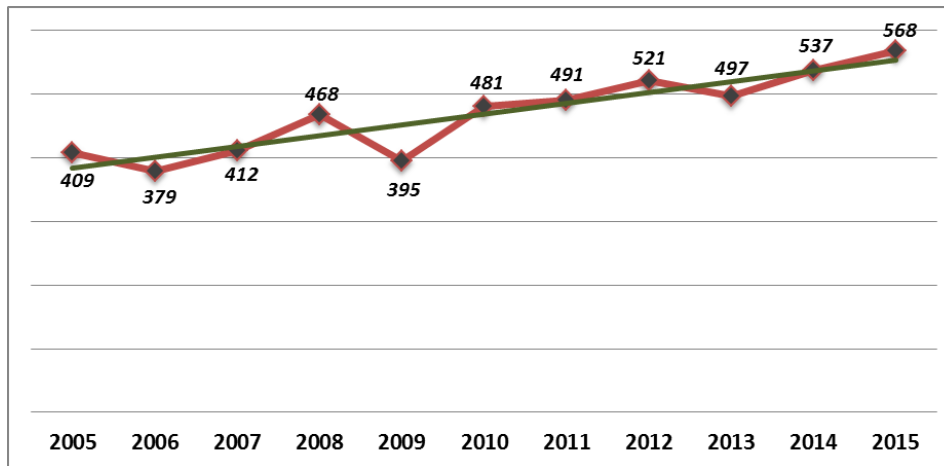
Program attendance

The average number of people of any age that attended library programs during the year



Public meetings

The average number of organized activities held at libraries that were not sponsored or co-sponsored by libraries

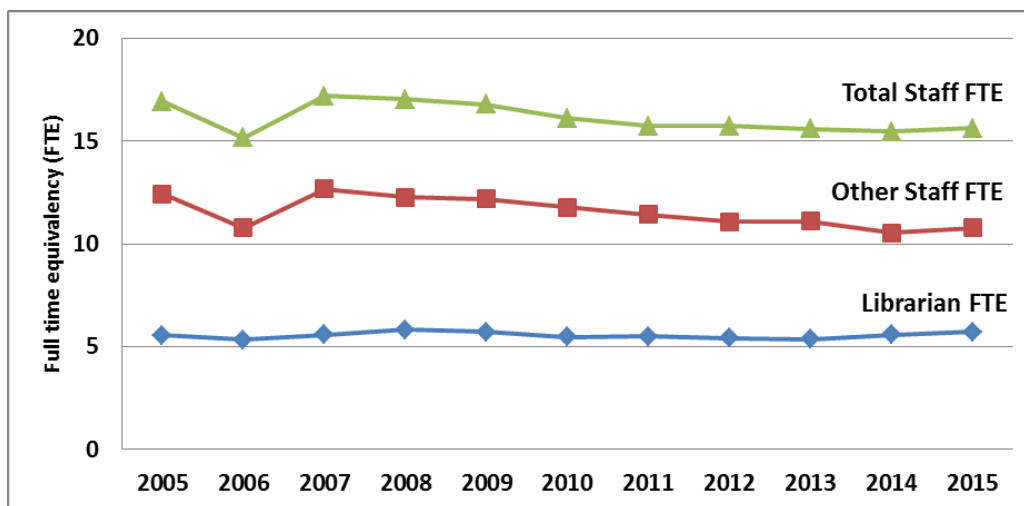


Staffing

Total staff FTE are the average full time equivalency of all positions funded in library budgets whether those positions are filled or not.

Other staff FTE are the average full time equivalency of employees paid from library budgets that include clerical, information technology, administrative support, security, and maintenance positions.

Librarian FTE are the average full time equivalency of employees with master's degrees or with the title *librarian* that do not hold a master's degree and are paid for work that requires professional training and skill in the theoretical or scientific aspects of library work.



Source: Minnesota Public Library Report, 2005-2015